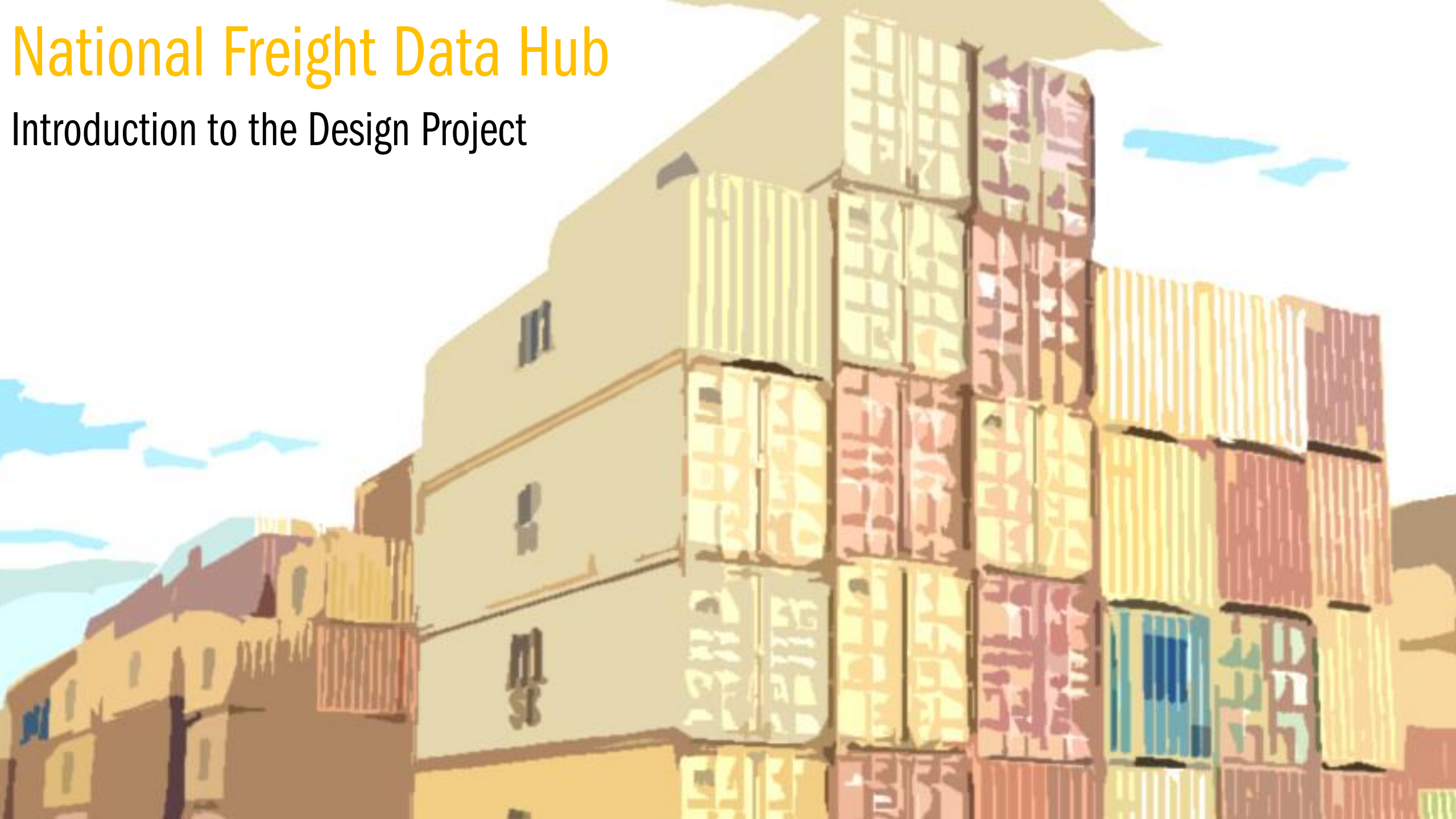


# National Freight Data Hub

Introduction to the Design Project



# National Freight Data Hub

## Purpose

To enhance collection of and access to freight data, across all modes, to:

- Support day-to-day operations
- Improve infrastructure and transport network investment decisions
- Enable end-to-end performance evaluation for Australia's freight system

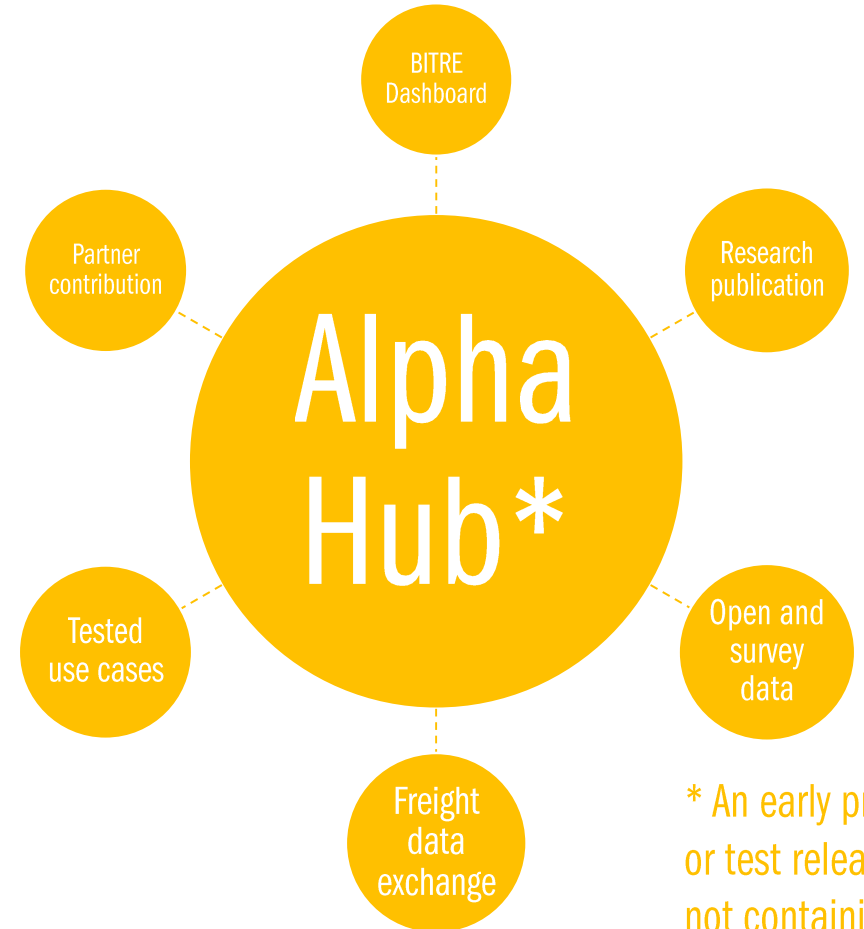
Two year commitment to settle hub design, including arrangements for collection, protection, dissemination, and hosting

# National Freight Data Hub

What does success look like? In two years...

## Settled Design for Government consideration:

- Business Model
- System specifications
- Roadmap for implementation,
- Proposed hosting arrangements



\* An early preview or test release, not containing all features of the target product

Stakeholder input and participation are critical to both success conditions

# National Freight Data Hub

## Scope for settling design

- Collaborative design - input from all stakeholders on key outputs:

**Agreed Approach**  
on critical elements

**Business Case**  
Refined options for  
Government

**Roadmap**  
for Implementation

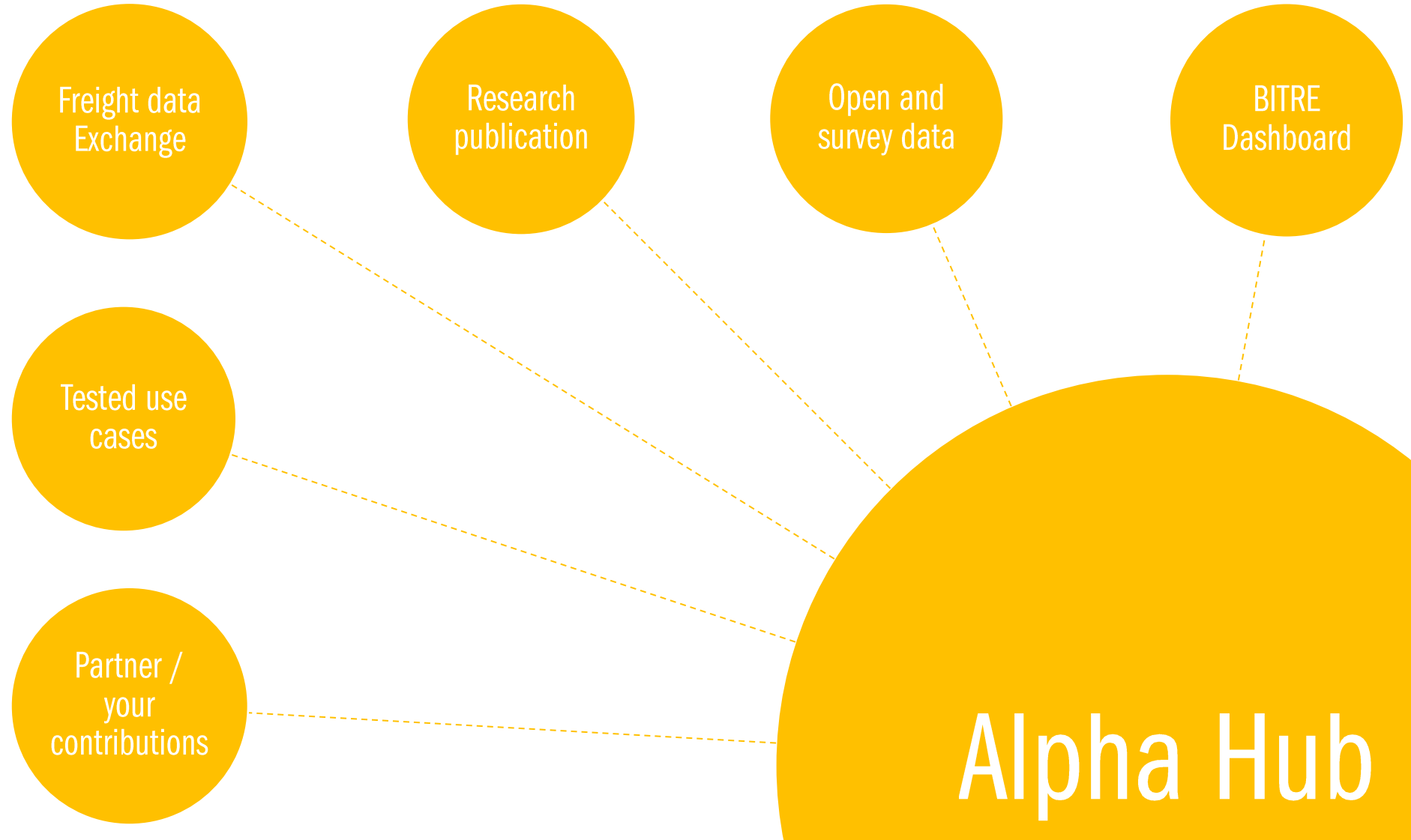
**System  
Specification**  
Hosting and Interface

- Design developed concurrently with pilot projects and alpha build

# National Freight Data Hub

## Scope for Alpha Build

- Pilot projects integrated into proof of concept
- Opportunity to embed design work into working prototype
- Testing value and informing longer term design and bus. case
- Start small and scale fast

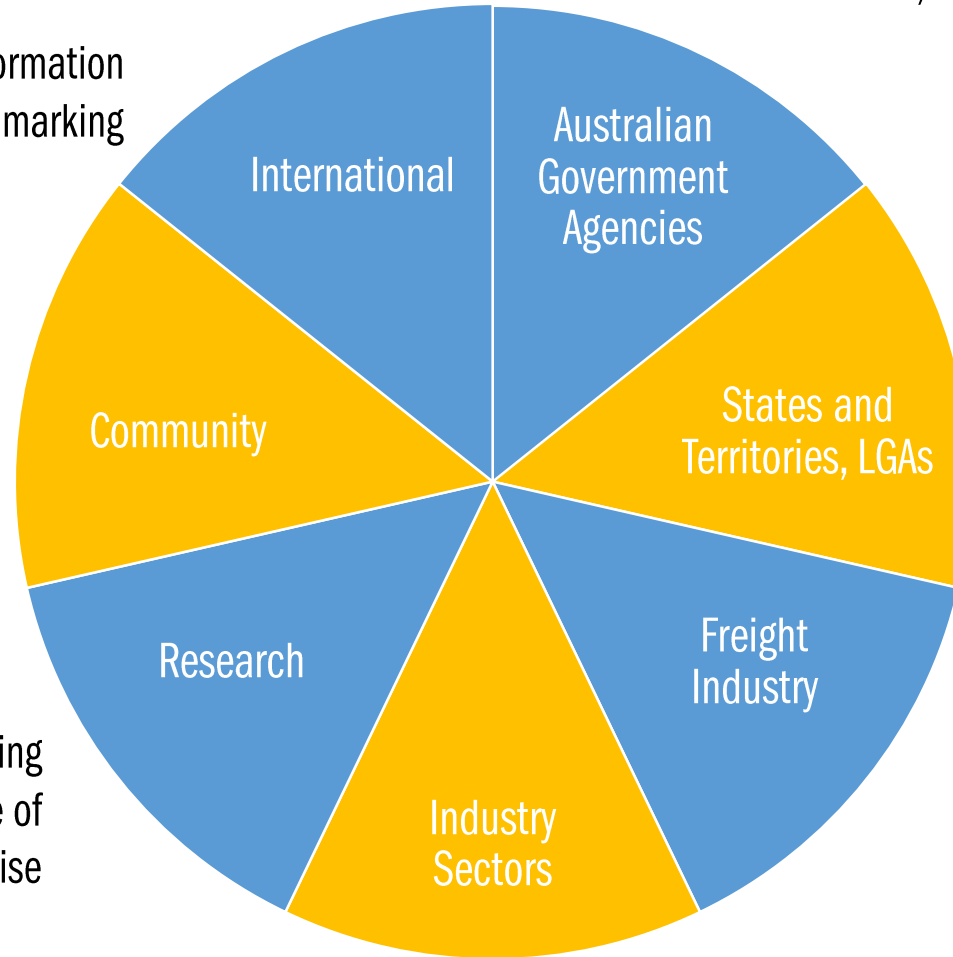


# National Freight Data Hub

## Participants and Stakeholders

Sponsor role: settling design, coordinating roles and contributions, and deriving strategic investment benefit

Key links to standards, protocols, information sharing and benchmarking



Government partners:

- Supporting progress to settle design and ensuring value proposition
- deriving benefits across investment, operations, and performance

Critical design and contributor role:

- investing design input and data
- derive benefit to investment, operations and performance

Getting greater clarity on how end-to-end freight system works, and how all stakeholders are working to improve outcomes for Australians

Ensuring potential for innovation and building upon evidence base and taking advantage of research and expertise

Many sectors to benefit from performance and investment enhancements – supporting productivity and competitiveness

# National Freight Data Hub

## Critical elements

### Data Collection

Working toward agreed principles for data collection, including standards and priority gaps

Guidance from Industry and Jurisdictional advisory

### Protection and Confidentiality

Developing agreed needs for cyber security, data protection, and future proofing

Looking to international best practice

Stakeholder Workshops and consultations throughout 2019-21

### Dissemination

Designing modes of aggregation, access needs, supporting sharing protocols and agreements

Iterative design process

Concepts to show user desirability, system feasibility, and business viability

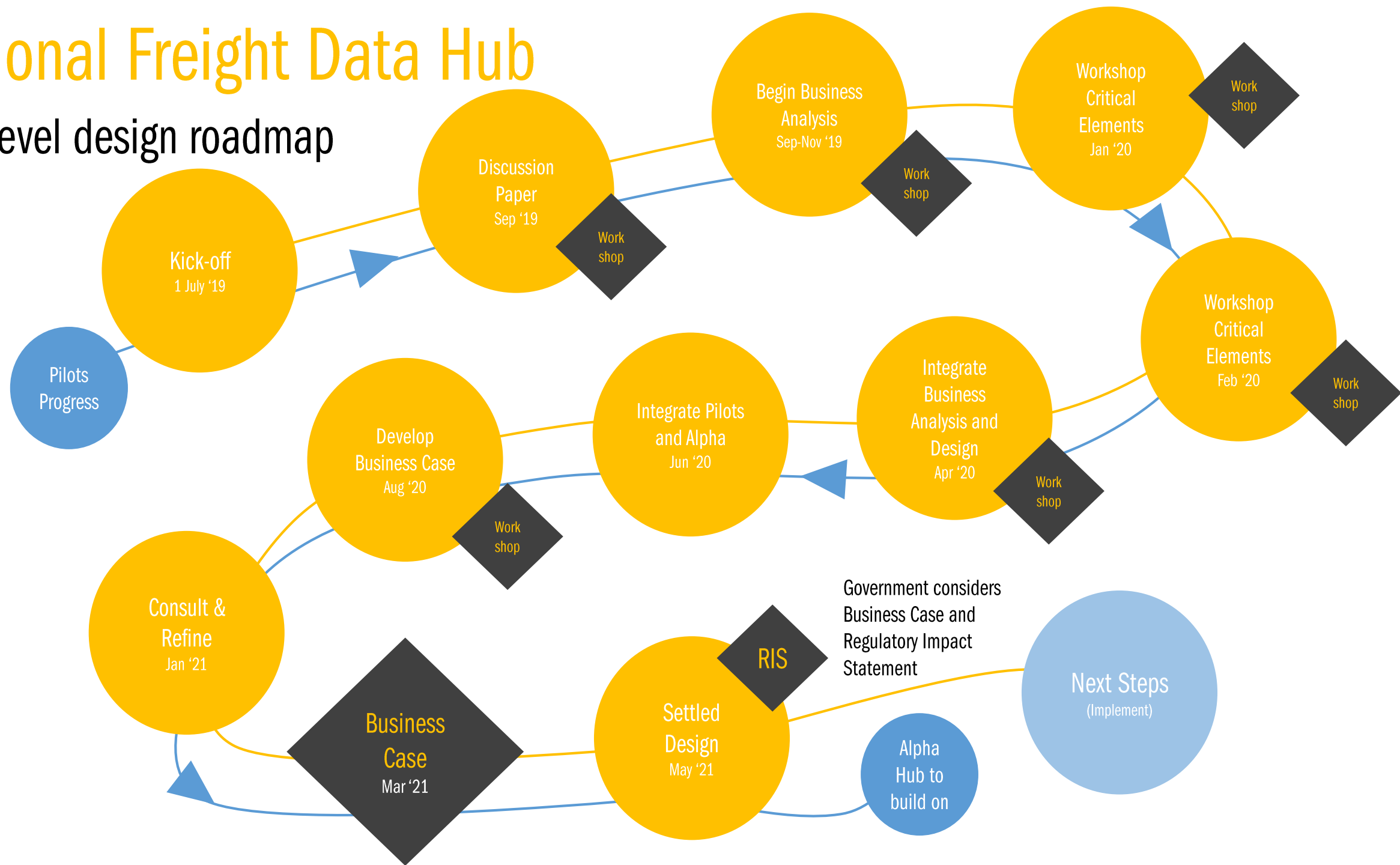
### Hosting

Business model, structure and technical specifications, roadmap for iterative implementation

Tests and pilots to inform proof of concept

# National Freight Data Hub

## High level design roadmap





# National Freight Data Hub

First six months

- Onboarding Project Team, Project Manager and Business Analyst (Jul-Aug)
- Website and Discussion Paper (Sep)
- Establishing Industry Advisory
- Settling approach with stakeholders
- Initial critical elements workshops (Sep-Nov)
- Continued progress on pilot projects and dashboard (from now...)

# National Freight Data Hub

Get in Touch!

[freightdatahub@infrastructure.gov.au](mailto:freightdatahub@infrastructure.gov.au)

