



COMMONWEALTH OF AUSTRALIA

**AUSTRALIAN DESIGN RULE 23
FOR
NEW PNEUMATIC PASSENGER CAR TYRES**

As Endorsed by the
Australian Transport Advisory Council

The intention of this Australian Design Rule is to specify standards of strength, construction and standard pressure/load relationships for tyres of particular size designations to facilitate the choice of tyres for passenger cars and derivatives thereof.

The Australian Transport Advisory Council has recommended to Commonwealth, State and Territory Governments that all motor vehicles specified below, except those types on passenger car derivatives, forward control passenger vehicles and multi-purpose passenger cars which are labelled as suitable for light trucks by the designation L.T. or similar, shall comply with Australian Design Rule 23 - New Pneumatic Passenger Car Tyres.

VEHICLE CATEGORY	RULE		AMENDMENT
	MANUFACTURED ON OR AFTER		
	23		
Passenger Cars			
Forward Control Passenger Vehicles up to 8 seats	N/A		
9 seats	N/A		
Other Passenger Cars	1 Jan 1974		
Passenger Car Derivatives	1 Jan 1974		
Multi-Purpose Passenger Cars	1 Jan 1974		
Omnibuses up to 3.5 tonnes GVM			
up to 12 seats	N/A		
over 12 seats	N/A		
up to 4.5 tonnes GVM	N/A		
over 4.5 tonnes GVM	N/A		
Motorcycles	N/A		
Mopeds	N/A		
Specially Constructed Vehicles	N/A		
Other Vehicles not listed above			
up to 4.5 tonnes GVM	N/A		
over 4.5 tonnes GVM	N/A		

N/A - Not Applicable

GROSS VEHICLE MASS - Abbreviated to 'GVM'

The Australian Transport Advisory Council has also recommended to Commonwealth, State and Territory Governments that motor vehicles which comply with the requirements of ADR 23A - New Pneumatic Passenger Car Tyres need not comply with the requirements of ADR 23.

Issued By: Department of Transport
PO Box 594
CIVIC SQUARE ACT 2608
AUSTRALIA

Issued: February 1984



AUSTRALIAN DESIGN RULE NO. 23 - NEW PNEUMATIC PASSENGER CAR TYRES

23.1 Definitions

23.1.1 'Bead' means that part of the tyre usually made of steel wires, wrapped or reinforced by ply cords, that is shaped to fit the rim. | *

23.1.2 'Bead separation' means a breakdown of bond between components in the bead area.

23.1.3 'Bias-Belted or Belted-Bias Tyre' means a pneumatic tyre in which the cords in the tyre carcass are laid at alternate angles which are substantially less than 90 deg. to the centreline of the tread. In addition cord reinforcing strips are incorporated into the tyre under the tread such that these cords make an included angle with the tyre centreline not greater than the same angle made by the carcass cords. | *

23.1.4 'Carcass' means the tyre structure, except tread and sidewall rubber.

23.1.5 'Chunking' means the breaking away of pieces of the tread.

23.1.6 'Cord' means the strands forming the plies in the tyre.

23.1.7 'Cord Separation' means cord parting away from adjacent rubber compounds.

23.1.8 'Cross Ply Tyre or Bias Ply Tyre' means a pneumatic tyre in which the cords in the tyre carcass are laid at alternate angles which are substantially less than 90 deg. to the centreline of the tread.

23.1.9 'Groove' means the space between two adjacent tread ribs.

23.1.10 'Load Range' means an identification of a given size tyre with its load and inflation limits, and shall be designated as load range NL, ML and HL for tyres in Table 1.0 and as Standard Load (SL) and Extra Load (EL) for tyres in Table 1.1 and is used for reference purposes only in this Rule. | *

23.1.11 'Maximum Load Rating' means the maximum load which the tyre is rated to carry, as specified in Table 1.

23.1.12 'Overall Width' means the linear distance between the exteriors of the sidewalls of an inflated tyre, including elevations due to labelling, decorations, or protective bands or ribs.

23.1.13 'Performance Rating of the Tyre' relates the tyre construction, wheel rim diameter and maximum vehicle speed for which use of the tyre is rated.

23.1.14 'Ply' means a layer of rubber-coated substantially parallel cords forming the tyre body.

23.1.15 'Ply Separation' means a parting of rubber compound between adjacent plies.

* Amended February 1981

23.1.16 'Pneumatic Tyre' means a mechanical device made of rubber, chemicals, fabric and steel or other materials, which, when mounted on an automotive wheel, provides the traction and contains the gas or fluid that sustains the load.

23.1.17 'Radial Ply Tyre' means a pneumatic tyre in which the ply cords which extend to the beads are laid at substantially 90 degrees to the centreline of the tread.

23.1.18 'Rim' means a support for a tyre or a tyre and tube assembly upon which the tyre beads are seated.

23.1.19 'Section Width' means the linear distance between the exteriors of the sidewalls of an inflated tyre, excluding elevations due to labelling, decoration, or protective bands.

23.1.20 'Sidewall' means that portion of a tyre between the tread and the bead.

23.1.21 'Size Factor' means the sum of the section width and the outer diameter of a tyre determined on the test rim.

23.1.22 'Test Rim' means any rim of the applicable rim width specified in Table 1 for a particular tyre size designation with the rim bead seat and flange dimensions shown in one or more of the following:

- (i) the Tyre and Rim Standards Manual of the Tyre and Rim Association of Australia, 1980 edition,
- (ii) the 1980 Tire and Rim Association Inc. Year Book,
- (iii) the British Standard, BS AU 50, Part 1 : Section 1d : 1977 and Part 2a : 1973
- (iv) the Japan Automobile Tyre Manufacturers Association Standard 1974 edition,
- (v) the Japanese Industrial Standards (JIS-D4202) dated 1977 and (JIS-D4218) dated 1975,
- (vi) the European Tyre and Rim Technical Organisation Practices (E.T.R.T.O.) dated 1980,
- (vii) the Deutsche Industrie Norm (DIN) 7818, dated December 1979, and
- (viii) Deutsche Industrie Norm (DIN) 7817, dated March 1979.

23.1.23 'Test Wheel Speed' means the peripheral speed of the steel test wheel.

23.1.24 'Tread' means the portion of a tyre that comes into contact with the road.

23.1.25 'Tread Separation' means pulling away of the tread from the tyre carcass.

* Amended February 1981

23.1.26 'Treadwear Indicator' - means an indicator incorporated into the tread of a tyre which gives a visual indication when the tread has worn down to leave a pre-determined minimum groove depth.

23.1.27 'Winter tread' - means a tread design intended for occasional operation in snow or mud and consisting essentially of a lug or block configuration incorporating numerous reinforcement tie bars between the tread elements.

23.2 Requirements

Tyres shall meet the requirements of Clauses 23.2.1 to 23.3.5.4 inclusive except that tyres meeting the requirements of Clauses 23A.2.2 to 23A.3.5.2.5 shall be deemed to meet these requirements also. *

23.2.1 Size and Construction

Tyre manufacturers shall nominate the rim alternatives for which the tyre is designed and these alternatives shall include at least all the approved rims specified for its size designation in the appropriate Part A of Table 2.

23.2.2 Performance Requirements

23.2.2.1 General

Each tyre shall conform to each of the following:-

- (a) It shall meet the requirements specified in 23.2.2.2 for its tyre size designation, type, and load range;
- (b) The permissible loading recommended by the tyre manufacturer for the various inflation pressures shall not depart from those indicated in Table 1 or approved supplement for that particular tyre;
- (c) Except where the tyre has a winter tread, it shall incorporate at least four treadwear indicators approximately equally spaced, each of which provides for a visual indication when the tread in the vicinity of the indicator has a depth of 0.063 ± 0.010 inch.

23.2.2.2 Test Requirements

23.2.2.2.1 Test Sample

Three tyres having identical characteristics when described according to requirements of Clause 23.2.3 shall comprise a test sample:-

- (a) one tyre shall be used for physical dimensions, resistance to bead unseating, and strength, in sequence;
- (b) a second tyre shall be used for tyre endurance; and
- (c) a third tyre for high speed performance.

23.2.2.2.2 In the appropriate tests, pressures shall be established within 1PSI or 10kPa (as appropriate) of the values specified for each appropriate test.

*Amended August 1982

23.2.2.2.3 Physical Dimensions

Each tyre shall conform to each of the following when measured in accordance with 23.3.1.

- (a) Its actual section width and overall width shall not exceed by more than 7% the section width specified in Table 1 or approved supplement for its size designation and type; and
- (b) Its size factor shall be at least as large as that specified in Table 1 or approved supplement for its size, designation and type.

23.2.2.2.4 Resistance to bead unseating

(For Tubeless Tyres Only)

When tested in accordance with 23.3.2 the applied force required to unseat the tyre bead at the point of contact shall not be less than:

- (a) 1,500 pounds for tyres with a section width of less than 6.3 inches for tyres in Table 1.0 and 160 mm for tyres in Table 1.1;
- (b) 2,000 pounds for tyres with a section width of 6.3 inches or more but less than 8 inches for tyres in Table 1.0 and 160 mm or more but less than 204 mm for tyres in Table 1.1;
- (c) 2,500 pounds for tyres with a section width of 8 inches or more for tyres in Table 1.0 or 204 mm or more for tyres in Table 1.1

For the purpose of this clause the section width is that specified in Table I or approved supplement for the applicable tyre size designation and type.

23.2.2.2.5 Tyre Strength

Each tyre shall meet the requirements for minimum breaking energy specified in Table 3 when tested in accordance with 23.3.3.

23.2.2.2.6 Tyre Endurance

After completion of the laboratory test wheel endurance test specified in 23.3.4 no tyre shall have tread, ply, cord, or bead separation, chunking, or broken cords.

23.2.2.2.7 High Speed test

After completion of the laboratory speed test specified in 23.3.5 no tyre shall have tread, ply, cord or bead separation, chunking, or broken cords.

23.2.3 Labelling requirements

Each tyre shall be conspicuously labelled on both sidewalls with each of the following permanently moulded into or onto the tyre in letters and figures at least 0.150 inches high and depth at least 0.010 inches if below the background surface or 0.015 inches if above the background surface.

- 23.2.3(a) Tyre size designation (which includes the performance rating symbol are as determined from table 4) and in the case of

belted bias or bias belted construction, the letter B as specified in Table 1.

- (h) For tyres in Table 1.0 the maximum load rating for the tyre expressed in pounds, followed by the word 'pounds' or the abbreviation 'lbs' and for tyres in Table 1.1 the maximum load rating for the tyre expressed in kilograms followed by the word 'kilograms' or the abbreviation 'kg'.
- (c) Identification of manufacturer by
 - (1) Name; or
 - (2) Brand name and an approved code mark.
- (d) The word 'tubeless' if applicable.
- (e) The word 'radial' if applicable.
- (f) The words 'belted bias' or 'bias belted' if applicable.

23.3 Test Procedures

23.3.1 Physical Dimensions

Determine tyre physical dimensions under uniform ambient conditions as follows:

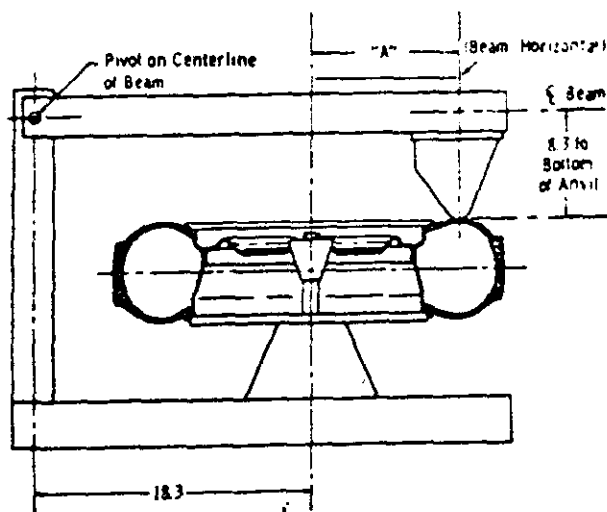
- (a) Mount the tyre on a test rim and inflate it to the applicable pressure specified in Table 5.
- (b) Condition it at ambient room temperature for at least 24 hours.
- (c) Readjust pressure to that specified in (a).
- (d) Caliper the section width and overall width at 6 points approximately equally spaced around the tyre circumference.
- (e) Record the average of these measurements as the section width and overall width, respectively.
- (f) Determine tyre outer diameter by measuring the maximum circumference of the tyre and dividing this dimension by π .

23.3.2 Tubeless tyre bead unseating resistance

23.3.2.1 Preparations of Tyre - Test Rim Assembly

- 23.3.2.1.1 Wash the tyre, dry it at the beads, and mount it without lubrication or adhesives on a clean, painted test rim.
- 23.3.2.1.2 Adjust the inflation to the applicable pressure specified in Table 5 at ambient room temperature.

23.3.2.1.3 Mount the tyre and test rim in the fixture shown in Figure 1, and force the standard block shown in Figure 2 against the tyre sidewall as required by the geometry of the fixture, or by any other approved test procedure.



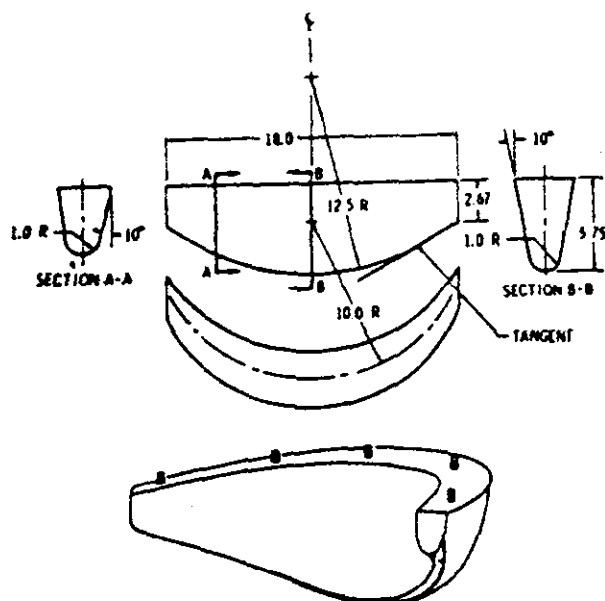
Test Rim	
NOM: DIA	DIM 'A'
inches	inches
17	12.0
16	11.5
15	11.0
14	10.5
13	10.0
12	9.5
11	9.0
10	8.5
BEA	inches
390	11.0
415	11.5

Note - Dimensions in inches

Figure 1 - Bead Unseating Fixture

23.3.2.2 Test Procedure

23.3.2.2.1 Apply a load through the block to the tyre outer sidewall at a distance not less than that specified in Figure 1 for the applicable test rim at a rate of $2 \pm \frac{1}{4}$ inches per minute, with the load arm substantially parallel to the tyre and rim assembly at the time of engagement.



MATERIAL:
 Cast Aluminium 355
 T-6 Condition
 Finish - 50 Micro Inch
 or
 other approved material

Figure 2 - Diagram of Bead Unseating Block
 Dimensions in inches

* Amended February 1981

23.3.2.2.2 Increase the load until the bead unseats or the applicable value specified in 23.2.2.2.4 is reached.

23.3.2.2.3 This test shall be repeated at least four times at locations approximately equally spaced around the tyre circumference.

23.3.3 Tyre strength

23.3.3.1 Preparation of tyre

23.3.3.1.1 Mount the tyre on a test rim and inflate it to the applicable pressure specified in Table 5.

23.3.3.1.2 Condition it at test room temperature for at least 3 hours.

23.3.3.1.3 Readjust its pressure to that specified in 23.3.3.1.1.

23.3.3.2 Test procedure

23.3.3.2.1 Force a cylindrical steel plunger with a hemispherical end and a diameter of $3/4 \pm 1/16$ inch perpendicularly into the tread as near to the centreline as possible, avoiding penetration into the tread groove, at the rate of $2 \pm 1/2$ inches per minute.

23.3.3.2.2 Record the force and penetration at five test points approximately equally spaced around the circumference of the tyre. If the tyre fails to break before the plunger is stopped by reaching the rim, record the force and penetration as the rim is reached and use these values in 23.3.3.2.3.

23.3.3.2.3 Compute the breaking energy for each test point by means of the following formula:

$$W = \frac{F \times P}{2}$$

where

W = Energy, inch pounds;

F = Force, pounds; and

P = Penetration, inches.

23.3.3.2.4 Determine the breaking energy value for the tyre by computing the average of the five values obtained in accordance with 23.3.3.2.3.

23.3.4 Tyre endurance

23.3.4.1 Preparation of tyre

23.3.4.1.1 Mount a new tyre on a test rim and inflate it to the applicable pressure specified in Table 5.

* Amended February 1981

23.3.4.1.2 Condition the tyre assembly at a temperature not less than 95°F for at least three hours.

23.3.4.1.3 Readjust tyre pressure to that specified in 23.3.4.1.1 immediately before testing.

23.3.4.2 Test Procedure

23.3.4.2.1 Mount the tyre and test rim assembly on a test axle and press it against a flat-faced steel test wheel of an outside diameter not greater than 67.23 inches, and at least as wide as the section width of the tyre to be tested, or an approved equivalent test wheel, with the load not less than that specified in Table 1 or approved supplement for the tyre's size designation and type, and the applicable pressure specified in Column (i) of the Table shown under 23.3.4.2.3.

23.3.4.2.2 During the test the ambient temperature at a distance of not less than 6 inches and not more than 3 feet from the tyre shall be at least 95°F. No provision shall be made for cooling the tyre during the test, with air at a lower temperature than 95°F.

23.3.4.2.3 Conduct the test at not less than 50 miles per hour test wheel speed with a load on the tyre not less than that shown in Table 1 or approved supplement as appropriate to the pressure shown in the following schedule:

Load Range	Load from Table 1 (or approved supplement)		
	Column (i)	Column (ii)	Column (iii)
	for 4 hours	for 6 hours	for 24 hours
NL (<u>Table 1.0</u>)	24 p.s.i. column*	28 p.s.i. column	32 p.s.i. column
ML (<u>Table 1.0</u>)	28 p.s.i. column	32 p.s.i. column	36 p.s.i. column
HL (<u>Table 1.0</u>)	32 p.s.i. column	36 p.s.i. column	40 p.s.i. column
<u>Standard load</u> (<u>Table 1.1</u>)	<u>180 kPa</u> column	<u>220 kPa</u> column	<u>240 kPa</u> column
<u>Extra load</u> (<u>Table 1.1</u>)	<u>220 kPa</u> column	<u>260 kPa</u> column	<u>280 kPa</u> column

* 'Column' refers to relevant column of Table 1 or approved supplement.

*Amended February 1981

23.3.5 High Speed Test

23.3.5.1 After preparing the tyre in accordance with 23.3.4.1 mount the tyre and test rim assembly in accordance with 23.3.4.2.1 and press it against the test wheel with the load not less than that specified in Table 1 or approved supplement for the tyre's size designation and the applicable pressure specified in Column (ii) of the following table:

(i) Load Range	(ii) Load from Table 1 or Approved Supplement
HL <u>(Table 1.0)</u>	24 p.s.i. column
ML <u>(Table 1.0)</u>	28 p.s.i. column
HL <u>(Table 1.0)</u>	32 p.s.i. column
<u>Standard Load</u> <u>(Table 1.1)</u>	<u>180 kPa column</u>
<u>Extra Load</u> <u>(Table 1.1)</u>	<u>220 kPa column</u>

23.3.5.2 Break in the tyre by running it for 2 + ¼ hours at not less than 50 mph test wheel speed.

23.3.5.3 Allow it to cool for not less than 2 hours in ambient conditions of not less than 95°F, then readjust the inflation pressure to the applicable pressure specified in Table 5.

23.3.5.4 With the wheel and tyre now conditioned for the high speed test, and mounted and loaded in accordance with clause 23.3.4.2.1. operate the equipment at a test wheel speed of not less than 75 mph for at least 30 minutes, then adjust the speed to not less than 80 mph and run for at least 30 minutes and further adjust the speed to not less than 85 mph for a final period of at least 30 minutes.

*Amended February 1981

TABLE 3
MINIMUM BREAKING ENERGY VALUES (INCH POUNDS)

TABLE 3.1 FOR BIAS OR BELTED BIAS PLY TYRES WITH
A SECTION WIDTH OF 6.30 INCHES AND ABOVE
(REFER TABLE 1 OR APPROVED SUPPLEMENT)

Cord Material	Load Range				
	NL	ML	HL	Standard Load	Extra Load
Rayon	1650 in-lbs	2475 in-lbs	3300 in-lbs	1650 in lbs	3300 in-lbs
Other Material	2600 in-lbs	3900 in-lbs	5200 in-lbs	2600 in-lbs	5200 in-lbs

TABLE 3.2 FOR BIAS OR BELTED BIAS PLY TYRES WITH
A SECTION WIDTH BELOW 6.30 INCHES
(REFER TABLE 1 OR APPROVED SUPPLEMENT)

Cord Material	Load Range				
	NL	ML	HL	Standard Load	Extra Load
Rayon	1000 in-lbs	1875 in-lbs	2500 in-lbs	1000 in-lbs	2500 in-lbs
Other Material	1950 in-lbs	2925 in-lbs	3900 in-lbs	1950 in-lbs	3900 in-lbs

TABLE 3.3 FOR RADIAL PLY TYRES

Section Width (Refer Table 1) #	Load Range				
	NL	ML	HL	Standard Load	Extra Load
Below 6.30 inches for tyres in Table 1.0 or 160 mm for tyres in Table 1.1	1950 in-lbs	2925 in-lbs	3900 in-lbs	1950 in-lbs	3900 in-lbs
6.30 inches and above for tyres in Table 1.0 or 160 mm for tyres in Table 1.1	2600 in-lbs	3900 in-lbs	5200 in-lbs	2600 in-lbs	5200 in-lbs

or approved supplement
*Amended February 1981

TABLE 4
PERFORMANCE RATING FOR TYRES

Tyre Construction	Performance Rating Symbol	Maximum speed of vehicles for which tyre is rated (mph)		
		Rim diameters (inches)		
		10	12	13 and over
Cross Ply and Bias Belted	'-'	75	85	95**
	L	85	95	100
	S	95	100	110
	H	110	115	125
	V	Over 110	Over 115	Over 125
Radial Ply	'-'	105	105	105
	S	113	113	113
	H	130	130	130
	V	Over 130	Over 130	Over 130

** 85 where the tyre has a winter tread and has a performance rating symbol W."

NOTE: The absence of a '-' W, L, S, H or V in a tyre size designation shall imply that the performance rating symbol of the tyre is the same as one with a '-' designation.

TABLE 5
TEST INFLATION PRESSURES

TABLE 5.1

Tyres in Table 1.0	Load Range		
	NL	ML	HL
Pressure (in psi) to be used in tests for physical dimensions, bead unseating tyre strength and tyre endurance	24	28	32
Pressure (in psi) to be used in tests for high speed performance	30	34	38

TABLE 5.2

Tyres in Table 1.1	Load Range	
	Standard Load	Extra Load
Pressure (in kPa) to be used in tests for physical dimensions bead unseating, tyre strength and tyre endurance	180	220
Pressure (in kPa) to be used in test for high speed performance	220	260

TABLE 1 - TYRE LOAD RATINGS, TEST RIMS, MINIMUM SIZE FACTORS AND SECTION WIDTHS

TABLE 1.0(A)
TYRE LOAD RATINGS, TEST RIMS MINIMUM SIZE FACTORS, AND SECTION WIDTHS FOR CONVENTIONAL AND LOW SECTION HEIGHT BIAS PLY TYRES

Tyre size designation	Load range	Maximum tyre loads (pounds) at various cold inflation pressures (p.s.i.)												Test rim width (inches)	Minimum size factor (inches)	Section width (inches)	
		16	18	20	22	24	26	28	30	32	34	36	38				40
6.00-13	NL			770	320	860	900	930	970	1010					4	29.57	6.00
	ML			770	320	860	900	930	970	1010	1040	1080					
	HL			770	320	860	900	930	970	1010	1040	1080	1110	1140			
6.50-13	NL			890	930	980	1030	1070	1110	1150					4½	30.75	6.60
	ML			890	930	980	1030	1070	1110	1150	1190	1230					
	HL			890	930	980	1030	1070	1110	1150	1190	1230	1270	1300			
7.00-13	NL			980	1030	1080	1130	1180	1230	1270					5	31.88	7.10
	ML			980	1030	1080	1130	1180	1230	1270	1310	1360					
	HL			980	1030	1080	1130	1180	1230	1270	1310	1360	1400	1440			
6.00-14	NL			840	900	930	980	1020	1060	1100					4	30.64	6.10
	ML			840	900	930	980	1020	1060	1100	1130	1170					
	HL			840	900	930	980	1020	1060	1100	1130	1170	1210	1240			
6.45-14	NL			860	910	960	1000	1040	1080	1120					4½	30.92	6.60
	ML			860	910	960	1000	1040	1080	1120	1160	1200					
	HL			860	910	960	1000	1040	1080	1120	1160	1200	1240	1270			
6.50-14	NL			930	990	1030	1080	1130	1170	1210					4½	31.75	6.60
	ML			930	990	1030	1080	1130	1170	1210	1250	1300					
	HL			930	990	1030	1080	1130	1170	1210	1250	1300	1330	1370			
6.95-14	NL			950	1000	1050	1100	1140	1190	1230					5	31.96	7.00
	ML			950	1000	1050	1100	1140	1190	1230	1270	1310					
	HL			950	1000	1050	1100	1140	1190	1230	1270	1310	1350	1390			
7.00-14	NL			1030	1100	1140	1190	1240	1290	1340					5	32.88	7.10
	ML			1030	1100	1140	1190	1240	1290	1340	1380	1430					
	HL			1030	1100	1140	1190	1240	1290	1340	1380	1430	1470	1520			
7.35-14	NL			1040	1100	1160	1210	1260	1310	1360					5	32.92	7.30
	ML			1040	1100	1160	1210	1260	1310	1360	1400	1450					
	HL			1040	1100	1160	1210	1260	1310	1360	1400	1450	1490	1540			
7.50-14	NL			1150	1230	1280	1340	1390	1450	1500					5½	34.19	7.65
	ML			1150	1230	1280	1340	1390	1450	1500	1550	1600					
	HL			1150	1230	1280	1340	1390	1450	1500	1550	1600	1650	1700			
7.75-14	NL			1150	1210	1270	1330	1390	1440	1500					5½	34.09	7.75
	ML			1150	1210	1270	1330	1390	1440	1500	1550	1600					
	HL			1150	1210	1270	1330	1390	1440	1500	1550	1600	1650	1690			
8.00-14	NL			1240	1320	1380	1440	1500	1560	1620					6	35.17	8.10
	ML			1240	1320	1380	1440	1500	1560	1620	1670	1730					
	HL			1240	1320	1380	1440	1500	1560	1620	1670	1730	1780	1830			
8.25-14	NL			1250	1310	1380	1440	1500	1560	1620					6	35.11	8.20
	ML			1250	1310	1380	1440	1500	1560	1620	1670	1730					
	HL			1250	1310	1380	1440	1500	1560	1620	1670	1730	1780	1830			
8.50-14	NL			1330	1420	1480	1550	1610	1670	1740					6	35.91	8.35
	ML			1330	1420	1480	1550	1610	1670	1740	1790	1850					
	HL			1330	1420	1480	1550	1610	1670	1740	1790	1850	1910	1960			
8.55-14	NL			1360	1430	1510	1580	1640	1710	1770					6	36.06	8.50
	ML			1360	1430	1510	1580	1640	1710	1770	1830	1890					
	HL			1360	1430	1510	1580	1640	1710	1770	1830	1890	1950	2000			
8.85-14	NL			1430	1510	1580	1660	1730	1790	1860					6½	36.82	8.95
	ML			1430	1510	1580	1660	1730	1790	1860	1920	1990					
	HL			1430	1510	1580	1660	1730	1790	1860	1920	1990	2050	2100			
9.00-14	NL			1430	1510	1580	1660	1730	1790	1860					6½	36.91	8.80
	ML			1430	1510	1580	1660	1730	1790	1860	1920	1990					
	HL			1430	1510	1580	1660	1730	1790	1860	1920	1990	2050	2100			

NOTES

- The '-' in the tyre size designation represents a performance rating. Tyre size designation shall include the letters L, S, H or V in place of the '-' if appropriate.
- If the tyre is of belted bias or bias belted construction, the tyre size designation shall include the letter B adjacent to and following the performance rating symbol.

* Amended February 1981

TABLE 1.3(A) (CONTINUED)

Tyre size designation	Load range	Maximum tyre loads (pounds) at various cold inflation pressures (p.s.i.)												Test rim width (inches)	Minimum size factor (inches)	Section width (inches)			
		16	18	20	22	24	26	28	30	32	34	36	38				40		
9.50-14	NL			1540	1640	1700	1780	1850	1930	2000							6½	37.74	9.05
	ML			1540	1640	1700	1780	1850	1930	2000	2060	2130							
	HL			1540	1640	1700	1780	1850	1930	2000	2060	2130	2200	2260					
6.00-15	NL			890	940	980	1030	1070	1110	1150						4	31.64	6.10	
	ML			890	940	980	1030	1070	1110	1150	1190	1230							
	HL			890	940	980	1030	1070	1110	1150	1190	1230	1270	1300					
6.50-15	NL			980	1040	1080	1130	1180	1230	1270						4½	32.75	6.60	
	ML			980	1040	1080	1130	1180	1230	1270	1320	1360							
	HL			980	1040	1080	1130	1180	1230	1270	1320	1360	1400	1440					
6.70-15	NL			1110	1190	1230	1290	1340	1400	1450						4½	33.95	7.00	
	ML			1110	1190	1230	1290	1340	1400	1450	1500	1550							
	HL			1110	1190	1230	1290	1340	1400	1450	1500	1550	1590	1640					
6.85-15	NL			950	1000	1050	1100	1140	1190	1230						5	32.48	6.90	
	ML			950	1000	1050	1100	1140	1190	1230	1270	1320							
	HL			950	1000	1050	1100	1140	1190	1230	1270	1320	1360	1390					
7.00-15	NL	1170	1240	1310	1380	1450	1515	1580	1640	1700						5	36.02	7.35	
	ML	1170	1240	1310	1380	1450	1515	1580	1640	1700	1760	1820							
	HL	1170	1240	1310	1380	1450	1515	1580	1640	1700	1760	1820	1870	1930					
7.10-15	NL			1190	1270	1320	1380	1440	1500	1550						5	34.89	7.40	
	ML			1190	1270	1320	1380	1440	1500	1550	1600	1660							
	HL			1190	1270	1320	1380	1440	1500	1550	1600	1660	1710	1760					
7.35-15	NL			1070	1130	1180	1240	1290	1340	1390						5½	33.86	7.50	
	ML			1070	1130	1180	1240	1290	1340	1390	1440	1480							
	HL			1070	1130	1180	1240	1290	1340	1390	1440	1480	1530	1570					
7.60-15	NL			1310	1400	1450	1520	1580	1640	1710						5½	36.05	7.90	
	ML			1310	1400	1450	1520	1580	1640	1710	1760	1820							
	HL			1310	1400	1450	1520	1580	1640	1710	1760	1820	1880	1930					
7.75-15	NL			1150	1210	1270	1330	1380	1440	1490						5½	34.53	7.65	
	ML			1150	1210	1270	1330	1380	1440	1490	1540	1590							
	HL			1150	1210	1270	1330	1380	1440	1490	1540	1590	1640	1690					
8.00-15	NL			1380	1470	1530	1600	1670	1730	1800						6	36.84	8.30	
	ML			1380	1470	1530	1600	1670	1730	1800	1860	1920							
	HL			1380	1470	1530	1600	1670	1730	1800	1860	1920	1980	2040					
8.15-15	NL			1240	1300	1370	1430	1490	1550	1610						6	35.50	8.15	
	ML			1240	1300	1370	1430	1490	1550	1610	1660	1720							
	HL			1240	1300	1370	1430	1490	1550	1610	1660	1720	1770	1820					
8.20-15	NL			1470	1570	1630	1710	1780	1850	1920						6	37.50	8.50	
	ML			1470	1570	1630	1710	1780	1850	1920	1980	2050							
	HL			1470	1570	1630	1710	1780	1850	1920	1980	2050	2110	2170					
8.25-15	NL	1030	1190	1250	1310	1380	1440	1500	1560	1620						6	35.57	8.20	
	ML	1030	1190	1250	1310	1380	1440	1500	1560	1620	1670	1730							
	HL	1030	1190	1250	1310	1380	1440	1500	1560	1620	1670	1730	1780	1830					
8.45-15	NL			1340	1410	1480	1550	1620	1680	1740						6	36.37	8.35	
	ML			1340	1410	1480	1550	1620	1680	1740	1800	1860							
	HL			1340	1410	1480	1550	1620	1680	1740	1800	1860	1920	1970					
8.55-15	NL	1220	1290	1360	1430	1510	1580	1640	1710	1770						6	36.57	8.45	
	ML	1220	1290	1360	1430	1510	1580	1640	1710	1770	1830	1890							
	HL	1220	1290	1360	1430	1510	1580	1640	1710	1770	1830	1890	1950	2000					
8.85-15	NL			1430	1510	1580	1650	1720	1790	1860						6½	37.29	8.80	
	ML			1430	1510	1580	1650	1720	1790	1860	1920	1980							
	HL			1430	1510	1580	1650	1720	1790	1860	1920	1980	2040	2100					

NOTES

1. The '-' in the tyre size designation represents a performance rating. Tyre size designation shall include the letters L, S, H or V in place of the '-' if appropriate.
2. If the tyre is of belted bias or bias belted construction, the tyre size designation shall include the letter B adjacent to and following the performance rating symbol.

TABLE 1.0(A) (CONTINUED)

Tyre size designation	Load range	Maximum tyre loads (pounds) at various cold inflation pressures (p.s.i.)												Test rim width (inches)	Minimum size factor (inches)	Section width (inches)			
		16	18	20	22	24	26	28	30	32	34	36	38				40		
8.90-15	NL			1700	1810	1880	1970	2050	2130	2210					6½	39.54	9.30		
	ML			1700	1810	1880	1970	2050	2130	2210	2290	2360							
	HL			1700	1810	1880	1970	2050	2130	2210	2290	2360	2430	2500					
9.00-15	NL			1460	1540	1620	1690	1760	1830	1900					6	37.45	8.50		
	ML			1460	1540	1620	1690	1760	1830	1900	1970	2030							
	HL			1460	1540	1620	1690	1760	1830	1900	1970	2030	2090	2150					
9.15-15	NL			1510	1600	1680	1750	1830	1900	1970					6½	37.92	9.05		
	ML			1510	1600	1680	1750	1830	1900	1970	2030	2100							
	HL			1510	1600	1680	1750	1830	1900	1970	2030	2100	2160	2230					
6.00-16	NL			1075	1135	1195	1250	1300	1350	1400					4	34.17	6.25		
	ML			1075	1135	1195	1250	1300	1350	1400	1450	1500							
6.50-16	NL	1090	1150	1215	1280	1345	1405	1465	1525	1580					4½	35.59	6.80		
	ML	1090	1150	1215	1280	1345	1405	1465	1525	1580	1635	1690							
	HL	1090	1150	1215	1280	1345	1405	1465	1525	1580	1635	1690	1740	1790					
6.70-16	NL		1185	1240	1300	1355	1410	1465	1525	1580					4½	35.60	7.40		
	ML		1185	1240	1300	1355	1410	1465	1525	1580	1635	1690							
	HL		1185	1240	1300	1355	1410	1465	1525	1580	1635	1690	1740	1795					
7.00-16	NL			1365	1440	1515	1585	1650	1715	1780					5	37.02	7.35		
	ML			1365	1440	1515	1585	1650	1715	1780	1840	1900							
7.50-16	NL			1565	1650	1735	1810	1890	1960	2035					5½	38.78	8.00		
	ML			1565	1650	1735	1810	1890	1960	2035	2105	2175							
6.50-17	NL		1215	1275	1330	1390	1450	1500	1560	1620					5	37.00	7.60		
	ML		1215	1275	1330	1390	1450	1500	1560	1620	1680	1740							
	HL		1215	1275	1330	1390	1450	1500	1560	1620	1680	1740	1795	1850					
L84-15	NL			1510	1600	1680	1750	1830	1900	1970					6	37.88	8.65		
	ML			1510	1600	1680	1750	1830	1900	1970	2030	2100							
	HL			1510	1600	1680	1750	1830	1900	1970	2030	2100	2160	2230					

NOTES

1. The '-' in the size designation represents a performance rating. Tyre size designation shall include the letters L, S, H or V in place of the '-' if appropriate.
2. If the tyre is of belted bias or bias belted construction, the tyre size designation shall include the letter B adjacent to and following the performance rating symbol.

Amended February 1981

	NL	890	950	1010	1070	1120	1170	1220	1270	1320	1360	1410	1450	1490			
	HL	890	950	1010	1070	1120	1170	1220	1270	1320	1360	1410	1450	1490			
E70-14	NL	950	1010	1070	1130	1190	1240	1300	1350	1400					5½	33.45	8.05
	ML	950	1010	1070	1130	1190	1240	1300	1350	1400	1440	1490					
	HL	950	1010	1070	1130	1190	1240	1300	1350	1400	1440	1490	1540	1580			
F70-14	NL	1020	1090	1160	1220	1280	1340	1400	1450	1500					5½	34.16	8.30
	ML	1020	1090	1160	1220	1280	1340	1400	1450	1500	1550	1610					
	HL	1020	1090	1160	1220	1280	1340	1400	1450	1500	1550	1610	1650	1700			
G70-14	NL	1100	1180	1250	1310	1380	1440	1500	1560	1620					6	35.18	8.75
	ML	1100	1180	1250	1310	1380	1440	1500	1560	1620	1680	1730					
	HL	1100	1180	1250	1310	1380	1440	1500	1560	1620	1680	1730	1780	1830			
H70-14	NL	1200	1290	1360	1440	1510	1580	1650	1710	1770					6	36.19	9.10
	ML	1200	1290	1360	1440	1510	1580	1650	1710	1770	1830	1890					
	HL	1200	1290	1360	1440	1510	1580	1650	1710	1770	1830	1890	1950	2010			
J70-14	NL	1260	1350	1430	1500	1580	1650	1720	1790	1860					6½	36.87	9.50
	ML	1260	1350	1430	1500	1580	1650	1720	1790	1860	1920	1980					
	HL	1260	1350	1430	1500	1580	1650	1720	1790	1860	1920	1980	2040	2100			
L70-14	NL	1340	1430	1520	1600	1680	1750	1830	1900	1970					6½	37.62	9.75
	ML	1340	1430	1520	1600	1680	1750	1830	1900	1970	2040	2100					
	HL	1340	1430	1520	1600	1680	1750	1830	1900	1970	2040	2100	2170	2230			
A70-15	NL	720	770	810	860	900	940	980	1020	1060					4½	30.00	6.60
	ML	720	770	810	860	900	940	980	1020	1060	1090	1130					
	HL	720	770	810	860	900	940	980	1020	1060	1090	1130	1160	1200			
C70-15	NL	840	890	950	1000	1050	1100	1140	1190	1230					5½	32.75	7.50
	ML	840	890	950	1000	1050	1100	1140	1190	1230	1270	1320					
	HL	840	890	950	1000	1050	1100	1140	1190	1230	1270	1320	1360	1390			
D70-15	NL	890	950	1010	1070	1120	1170	1220	1270	1320					5½	33.37	7.70
	ML	890	950	1010	1070	1120	1170	1220	1270	1320	1360	1410					
	HL	890	950	1010	1070	1120	1170	1220	1270	1320	1360	1410	1450	1490			

NOTES

1. The '-' in the tyre size designation represents a performance rating. Tyre size designation shall include the letters L, S, B or V in place of the '-' if appropriate.
2. If the tyre is of belted bias or bias belted construction, the tyre size designation shall include the letter B as the second character of the designation.

*Amended February 1981

TABLE 1.0(G)

TYRE LOAD RATINGS, TEST RIMS, MINIMUM SIZE FACTORS, AND SECTION WIDTHS FOR '70 SERIES' TYPE 'K' RADIAL PLY TYRES

Tyre size designation	Load range	Maximum tyre loads (pounds) at various cold inflation pressures (p.s.i.)												Test rim width (inches)	Minimum size factor (inches)	Section width (inches)	
		16	18	20	22	24	26	28	30	32	34	36	38				40
AR70-12	NL	720	770	810	860	900	940	980	1020	1060					5 1/2	29.74	7.50
	ML	720	770	810	860	900	940	980	1020	1060	1090	1130					
	HL	720	770	810	860	900	940	980	1020	1060	1090	1130	1160	1200			
ZR70-12	NL	640	700	750	790	830	860	900	940	970					5	28.81	7.05
	ML	640	700	750	790	830	860	900	940	970	1010	1040					
	HL	640	700	750	790	830	860	900	940	970	1010	1040	1080	1110			
AR70-13	NL	720	770	810	860	900	940	980	1020	1060					5	30.04	7.15
	ML	720	770	810	860	900	940	980	1020	1060	1090	1130					
	HL	720	770	810	860	900	940	980	1020	1060	1090	1130	1160	1200			
BR70-13	NL	780	840	890	930	980	1030	1070	1110	1150					5 1/2	31.04	7.60
	ML	780	840	890	930	980	1030	1070	1110	1150	1190	1230					
	HL	780	840	890	930	980	1030	1070	1110	1150	1190	1230	1270	1300			
CR70-13	NL	840	890	950	1000	1050	1100	1140	1190	1230					5 1/2	31.65	7.85
	ML	840	890	950	1000	1050	1100	1140	1190	1230	1270	1320					
	HL	840	890	950	1000	1050	1100	1140	1190	1230	1270	1320	1360	1400			
DR70-13	NL	890	950	1010	1070	1120	1170	1220	1270	1320					5 1/2	32.29	8.95
	ML	890	950	1010	1070	1120	1170	1220	1270	1320	1360	1410					
	HL	890	950	1010	1070	1120	1170	1220	1270	1320	1360	1410	1450	1490			
WR70-13	NL	565	605	640	680	710	740	770	800	830					4 1/2	27.97	6.25
	ML	565	605	640	680	710	740	770	800	830	860	890					
	HL	565	605	640	680	710	740	770	800	830	860	890	920	945			
YR70-13	NL	600	650	690	730	770	810	840	870	900					4.50	28.56	6.50
	ML	600	650	690	730	770	810	840	870	900	930	960					
	HL	600	650	690	730	770	810	840	870	900	930	960	990	1020			
ZR70-13	NL	640	700	750	790	830	860	900	940	970					5	29.33	6.90
	ML	640	700	750	790	830	860	900	940	970	1010	1040					
	HL	640	700	750	790	830	860	900	940	970	1010	1040	1080	1110			
AR70-14	NL	720	770	810	860	900	940	980	1020	1060					5	30.60	7.00
	ML	720	770	810	860	900	940	980	1020	1060	1090	1130					
	HL	720	770	810	860	900	940	980	1020	1060	1090	1130	1160	1200			
BR70-14	NL	780	840	890	930	980	1030	1070	1110	1150					5 1/2	31.52	7.45
	ML	780	840	890	930	980	1030	1070	1110	1150	1190	1230					
	HL	780	840	890	930	980	1030	1070	1110	1150	1190	1230	1270	1300			
CR70-14	NL	840	890	950	1000	1050	1100	1140	1190	1230					5 1/2	32.23	7.65
	ML	840	890	950	1000	1050	1100	1140	1190	1230	1270	1320					
	HL	840	890	950	1000	1050	1100	1140	1190	1230	1270	1320	1360	1400			
DR70-14	NL	890	950	1010	1070	1120	1170	1220	1270	1320					5 1/2	32.78	7.90
	ML	890	950	1010	1070	1120	1170	1220	1270	1320	1360	1410					
	HL	890	950	1010	1070	1120	1170	1220	1270	1320	1360	1410	1450	1490			
ER70-14	NL	950	1010	1070	1130	1190	1240	1300	1350	1400					5 1/2	33.34	8.10
	ML	950	1010	1070	1130	1190	1240	1300	1350	1400	1440	1490					
	HL	950	1010	1070	1130	1190	1240	1300	1350	1400	1440	1490	1540	1580			
FR70-14	NL	1020	1090	1160	1220	1280	1340	1400	1450	1500					6	34.34	8.55
	ML	1020	1090	1160	1220	1280	1340	1400	1450	1500	1550	1610					
	HL	1020	1090	1160	1220	1280	1340	1400	1450	1500	1550	1610	1650	1700			
GR70-14	NL	1100	1180	1250	1310	1380	1440	1500	1560	1620					6	35.12	8.85
	ML	1100	1180	1250	1310	1380	1440	1500	1560	1620	1680	1730					
	HL	1100	1180	1250	1310	1380	1440	1500	1560	1620	1680	1730	1780	1830			
HR70-14	NL	1200	1290	1360	1440	1510	1580	1650	1710	1770					6 1/2	36.31	9.40
	ML	1200	1290	1360	1440	1510	1580	1650	1710	1770	1830	1890					
	HL	1200	1290	1360	1440	1510	1580	1650	1710	1770	1830	1890	1950	2010			
JR70-14	NL	1260	1350	1430	1500	1580	1650	1720	1790	1860					6 1/2	36.86	9.55
	ML	1260	1350	1430	1500	1580	1650	1720	1790	1860	1920	1980					
	HL	1260	1350	1430	1500	1580	1650	1720	1790	1860	1920	1980	2040	2100			

NOTES

1. The '-' in the tyre size designation represents a performance rating. Tyre size designation shall include the letters S, H or V in place of the '-' if appropriate.

2. The letter 'K' may be added after the letters 'S', 'H' or 'V'.

TABLE 1.0(G) (CONTINUED)

Tyre size designation	Load range	Maximum tyre loads (pounds) at various cold inflation pressures (p.s.i.)												Test rim width (inches)	Minimum size factor (inches)	Section width (inches)	
		16	18	20	22	24	26	28	30	32	34	36	38				40
LR70-14	ML	1340	1430	1520	1600	1680	1750	1830	1900	1970					6 1/2	37.59	9.80
	MI	1340	1430	1520	1600	1680	1750	1830	1900	1970	2040	2100					
	HL	1340	1430	1520	1600	1680	1750	1830	1900	1970	2040	2100	2170	2230			
ER70-15	ML	780	840	890	930	980	1030	1070	1110	1150					5	31.92	7.10
	MI	780	840	890	930	980	1030	1070	1110	1150	1190	1230					
	HL	780	840	890	930	980	1030	1070	1110	1150	1190	1230	1270	1300			
CR70-15	ML	840	890	950	1000	1050	1100	1140	1190	1230					5 1/2	32.74	7.50
	MI	840	890	950	1000	1050	1100	1140	1190	1230	1270	1320					
	HL	840	890	950	1000	1050	1100	1140	1190	1230	1270	1320	1360	1400			
DR70-15	ML	890	950	1010	1070	1120	1170	1220	1270	1320					5 1/2	33.34	7.75
	MI	890	950	1010	1070	1120	1170	1220	1270	1320	1360	1410					
	HL	890	950	1010	1070	1120	1170	1220	1270	1320	1360	1410	1450	1490			
ER70-15	ML	950	1010	1070	1130	1190	1240	1300	1350	1400					5 1/2	33.91	7.90
	MI	950	1010	1070	1130	1190	1240	1300	1350	1400	1440	1490					
	HL	950	1010	1070	1130	1190	1240	1300	1350	1400	1440	1490	1540	1580			
FR70-15	ML	1020	1090	1160	1220	1280	1340	1400	1450	1500					6	34.87	8.40
	MI	1020	1090	1160	1220	1280	1340	1400	1450	1500	1550	1610					
	HL	1020	1090	1160	1220	1280	1340	1400	1450	1500	1550	1610	1650	1700			
GR70-15	ML	1100	1180	1250	1310	1380	1440	1500	1560	1620					6	35.65	8.65
	MI	1100	1180	1250	1310	1380	1440	1500	1560	1620	1680	1730					
	HL	1100	1180	1250	1310	1380	1440	1500	1560	1620	1680	1730	1780	1830			
HR70-15	ML	1200	1290	1360	1440	1510	1580	1650	1710	1770					6 1/2	36.83	9.20
	MI	1200	1290	1360	1440	1510	1580	1650	1710	1770	1830	1890					
	HL	1200	1290	1360	1440	1510	1580	1650	1710	1770	1830	1890	1950	2010			
JR 70-15	ML	1260	1350	1430	1500	1580	1650	1720	1790	1860					6 1/2	37.31	9.40
	MI	1260	1350	1430	1500	1580	1650	1720	1790	1860	1920	1980					
	HL	1260	1350	1430	1500	1580	1650	1720	1790	1860	1920	1980	2040	2100			
KR70-15	ML	1290	1380	1460	1540	1620	1690	1770	1830	1900					6 1/2	37.62	9.50
	MI	1290	1380	1460	1540	1620	1690	1770	1830	1900	1970	2030					
	HL	1290	1380	1460	1540	1620	1690	1770	1830	1900	1970	2030	2090	2150			
LR70-15	ML	1340	1430	1520	1600	1680	1750	1830	1900	1970					6 1/2	38.06	9.65
	MI	1340	1430	1520	1600	1680	1750	1830	1900	1970	2040	2100					
	HL	1340	1430	1520	1600	1680	1750	1830	1900	1970	2040	2100	2170	2230			
MR70-15	ML	1420	1520	1610	1700	1780	1860	1940	2020	2090					7	38.93	10.1
	MI	1420	1520	1610	1700	1780	1860	1940	2020	2090	2160	2230					
	HL	1420	1520	1610	1700	1780	1860	1940	2020	2090	2160	2230	2300	2370			

NOTE

The '-' in the tyre size designation represents a performance rating. Tyre size designation shall include the letters S, H or V in place of the '-' if appropriate.

The letter 'R' may be added after the letters 'S', 'H' or 'V'.

TABLE 1 - TYRE LOAD RATINGS, TEST RIMS-MINIMUM SIZE FACTORS AND SECTION WIDTHS

TABLE 1.0(H)

* ADR 23

THE LOAD RATINGS, TEST RIMS, MINIMUM SIZE FACTORS, AND SECTION WIDTHS FOR TYPE "R" RADIAL PLY TYRES

Tyre size designation	Load range	Maximum tyre loads (pounds) at various cold inflation pressures (p.s.i.)												Test rim width (inches)	Minimum size factor (inches)	Section width (inches)	
		16	18	20	22	24	26	28	30	32	34	36	38				40
145R10	NL	465	495	525	550	580	605	630	655	680					4	24.56	5.79
	ML	465	495	525	550	580	605	630	655	680	700	725					
	HL	465	495	525	550	580	605	630	655	680	700	725	750	770			
125R12	NL	370	400	430	450	475	495	515	535	555					3½	24.68	5.00
	ML	370	400	430	450	475	495	515	535	555	575	595					
	HL	370	400	430	450	475	495	515	535	555	575	595	610	630			
135R12	NL	440	475	505	535	560	585	610	635	655					4	25.53	5.39
	ML	440	475	505	535	560	585	610	635	655	680	700					
	HL	440	475	505	535	560	585	610	635	655	680	700	725	745			
145R12	NL	530	565	600	635	665	695	725	755	780					4	26.49	5.79
	ML	530	565	600	635	665	695	725	755	780	810	835					
	HL	530	565	600	635	665	695	725	755	780	810	835	860	885			
155R12	NL	590	630	665	700	735	770	800	835	865					4½	27.36	6.18
	ML	590	630	665	700	735	770	800	835	865	895	925					
	HL	590	630	665	700	735	770	800	835	865	895	925	950	980			
135R13	NL	480	515	545	575	600	630	655	680	705					4	26.53	5.39
	ML	480	515	545	575	600	630	655	680	705	730	755					
	HL	480	515	545	575	600	630	655	680	705	730	755	780	800			
145R13	NL	590	630	665	700	735	770	800	835	860					4	27.41	5.79
	ML	590	630	665	700	735	770	800	835	860	890	920					
	HL	590	630	665	700	735	770	800	835	860	890	920	950	980			
155R13	NL	645	690	730	770	810	845	885	915	950					4½	28.44	6.18
	ML	645	690	730	770	810	845	885	915	950	985	1015					
	HL	645	690	730	770	810	845	885	915	950	985	1015	1045	1075			
165R13	NL	680	730	770	820	860	900	930	970	1010					4½	29.18	6.40
	ML	680	730	770	820	860	900	930	970	1010	1040	1080					
	HL	680	730	770	820	860	900	930	970	1010	1040	1080	1110	1140			
175R13	NL	790	840	890	930	980	1030	1070	1110	1150					4½	30.16	6.75
	ML	790	840	890	930	980	1030	1070	1110	1150	1190	1230					
	HL	790	840	890	930	980	1030	1070	1110	1150	1190	1230	1270	1300			
185R13	NL	870	930	980	1030	1080	1130	1180	1230	1270					5	31.42	7.25
	ML	870	930	980	1030	1080	1130	1180	1230	1270	1310	1360					
	HL	870	930	980	1030	1080	1130	1180	1230	1270	1310	1360	1400	1440			
195R13	NL	955	1010	1060	1110	1170	1220	1280	1320	1370					5½	32.38	7.70
	ML	955	1010	1060	1110	1170	1220	1280	1320	1370	1420	1470					
	HL	955	1010	1060	1110	1170	1220	1280	1320	1370	1420	1470	1510	1550			
135R14	NL	515	550	585	615	645	675	705	730	760					4	27.54	5.39
	ML	515	550	585	615	645	675	705	730	760	785	810					
	HL	515	550	585	615	645	675	705	730	760	785	810	835	860			
145R14	NL	595	635	675	715	750	785	815	850	880					4	28.34	5.79
	ML	595	635	675	715	750	785	815	850	880	910	940					
	HL	595	635	675	715	750	785	815	850	880	910	940	965	995			
155R14	NL	690	740	780	820	860	900	940	970	1010					4	29.51	6.05
	ML	690	740	780	820	860	900	940	970	1010	1040	1080					
	HL	690	740	780	820	860	900	940	970	1010	1040	1080	1110	1140			
165R14	NL	760	810	860	910	960	1000	1040	1080	1120					4½	30.65	6.55
	ML	760	810	860	910	960	1000	1040	1080	1120	1160	1200					
	HL	760	810	860	910	960	1000	1040	1080	1120	1160	1200	1240	1270			
175R14	NL	840	900	950	1000	1050	1100	1140	1190	1230					5	31.49	7.00
	ML	840	900	950	1000	1050	1100	1140	1190	1230	1270	1310					
	HL	840	900	950	1000	1050	1100	1140	1190	1230	1270	1310	1350	1390			

NOTE : Tyre size designation shall include immediately before the letter R, the letters S, E or V if appropriate.

*Amended February 1981

TABLE 1.0 (H) (Continued)

Tyre size designation	Load range	Maximum tyre loads (pounds) at various cold inflation pressures (p.s.i.)													Test rim width inch. (ins)	Min. size factor inch. (ins)	Section width (inches)
		16	18	20	22	24	26	28	30	32	34	36	38	40			
185R14	NL	920	980	1040	1100	1160	1210	1260	1310	1360					5	32.59	7.30
	ML	920	980	1040	1100	1160	1210	1260	1310	1360	1400	1450					
	HL	920	980	1040	1100	1160	1210	1260	1310	1360	1400	1450	1490	1540			
195R14	NL	1020	1090	1150	1210	1270	1330	1390	1440	1500					5½	33.69	7.80
	ML	1020	1090	1150	1210	1270	1330	1390	1440	1500	1550	1600					
	HL	1020	1090	1150	1210	1270	1330	1390	1440	1500	1550	1600	1650	1690			
205R14	NL	1110	1190	1250	1310	1380	1440	1500	1560	1620					6	34.82	8.30
	ML	1110	1190	1250	1310	1380	1440	1500	1560	1620	1670	1730					
	HL	1110	1190	1250	1310	1380	1440	1500	1560	1620	1670	1730	1780	1830			
215R14	NL	1210	1290	1360	1430	1510	1580	1640	1710	1770					6	35.79	8.60
	ML	1210	1290	1360	1430	1510	1580	1640	1710	1770	1830	1890					
	HL	1210	1290	1360	1430	1510	1580	1640	1710	1770	1830	1890	1950	2000			
225R14	NL	1270	1350	1430	1510	1580	1660	1730	1790	1860					6½	36.44	9.95
	ML	1270	1350	1430	1510	1580	1660	1730	1790	1850	1920	1990					
	HL	1270	1350	1430	1510	1580	1600	1730	1790	1860	1920	1990	2050	2100			
125R15	NL	460	490	520	550	575	605	630	655	680					3½	27.69	5.00
	ML	460	490	520	550	575	605	630	655	680	705	725					
	HL	460	490	520	550	575	605	630	655	680	705	725	745	770			
135R15	NL	545	580	615	650	680	715	745	775	800					4	28.53	5.39
	ML	545	580	615	650	680	715	745	775	800	830	855					
	HL	545	580	615	650	680	715	745	775	800	830	855	880	910			
145R15	NL	640	680	720	760	795	830	865	900	935					4	29.34	5.79
	ML	640	680	720	760	795	830	865	900	935	965	995					
	HL	640	680	720	760	795	830	865	900	935	965	995	1025	1055			
155R15	NL	690	735	780	825	865	905	940	980	1015					4½	30.45	6.18
	ML	690	735	780	825	865	905	940	980	1015	1050	1085					
	HL	690	735	780	825	865	905	940	980	1015	1050	1085	1115	1150			
165R15	NL	770	820	870	910	960	1000	1050	1090	1130					4½	31.18	6.40
	ML	770	820	870	910	960	1000	1050	1090	1130	1170	1200					
	HL	770	820	870	910	960	1000	1050	1090	1130	1170	1200	1240	1270			
175R15	NL	840	900	950	1000	1050	1100	1140	1190	1230					5	32.27	6.90
	ML	840	900	950	1000	1050	1100	1140	1190	1230	1270	1320					
	HL	840	900	950	1000	1050	1100	1140	1190	1230	1270	1320	1360	1390			
185R15	NL	950	1010	1070	1130	1180	1240	1290	1340	1390					5½	33.58	7.45
	ML	950	1010	1070	1130	1180	1240	1290	1340	1390	1440	1480					
	HL	950	1010	1070	1130	1180	1240	1290	1340	1390	1440	1480	1530	1570			
195R15	NL	1020	1090	1150	1210	1270	1330	1380	1440	1490					5½	34.22	7.65
	ML	1020	1090	1150	1210	1270	1330	1380	1440	1490	1540	1590					
	HL	1020	1090	1150	1210	1270	1330	1380	1440	1490	1540	1590	1640	1690			
205R15	NL	1100	1170	1240	1300	1370	1430	1490	1550	1610					6	35.20	8.21
	ML	1100	1170	1240	1300	1370	1430	1490	1550	1610	1660	1720					
	HL	1100	1170	1240	1300	1370	1430	1490	1550	1610	1660	1720	1770	1820			
215R15	NL	1190	1270	1340	1410	1480	1550	1620	1680	1740					6	36.00	8.49
	ML	1190	1270	1340	1410	1480	1550	1620	1680	1740	1800	1860					
	HL	1190	1270	1340	1410	1480	1550	1620	1680	1740	1800	1860	1920	1970			
225R15	NL	1270	1350	1430	1510	1580	1650	1720	1790	1860					6½	36.94	8.98
	ML	1270	1350	1430	1510	1580	1650	1720	1790	1860	1920	1980					
	HL	1270	1350	1430	1510	1580	1650	1720	1790	1860	1920	1980	2040	2100			
235R15	NL	1340	1430	1510	1600	1680	1750	1830	1900	1970					6½	37.75	9.26
	ML	1340	1430	1510	1600	1680	1750	1830	1900	1970	2030	2100					
	HL	1340	1430	1510	1600	1680	1750	1830	1900	1970	2030	2100	2160	2230			
175R16	NL	920	980	1040	1100	1160	1210	1260	1310	1360					5	33.49	7
	ML	920	980	1040	1100	1160	1210	1260	1310	1360	1400	1450					
	HL	920	980	1040	1100	1160	1210	1260	1310	1360	1400	1450	1490	1540			
205R16	NL	1100	1170	1240	1300	1370	1430	1490	1550	1610					6	36.52	8.19
	ML	1100	1170	1240	1300	1370	1430	1490	1550	1610	1660	1720					
	HL	1100	1170	1240	1300	1370	1430	1490	1550	1610	1660	1720	1770	1820			

NOTE: The tyre size designation shall include immediately before the letter 'R', the letters 'S, E' or 'V' as appropriate

*Amended August 1982

TABLE 1 - TYRE LOAD RATINGS, TEST RIMS MINIMUM SIZE FACTORS AND SECTION WIDTHS

TABLE 1.0(J)

TYRE LOAD RATINGS, TEST RIMS, MINIMUM SIZE FACTORS, AND SECTION WIDTHS FOR '78 SERIES' BIAS PLY TYRES

Tyre size designation	Load range	Maximum tyre loads (pounds) at various cold inflation pressures (p.s.i.)												Test rim width (inches)	Minimum size factor (inches)	Section width (inches)	
		16	18	20	22	24	26	28	30	32	34	36	38				40
A78-13	NL	720	770	810	860	900	940	980	1020	1060					4½	29.74	6.60
	ML	720	770	810	860	900	940	980	1020	1060	1090	1130					
	HL	720	770	810	860	900	940	980	1020	1060	1090	1130	1160	1200			
B78-13	NL	780	840	890	930	980	1030	1070	1110	1150				5	30.72	7.05	
	ML	780	840	890	930	980	1030	1070	1110	1150	1190	1230					
	HL	780	840	890	930	980	1030	1070	1110	1150	1190	1230	1270				1300
C78-13	NL	840	890	950	1000	1050	1100	1140	1190	1230				5½	31.56	7.45	
	ML	840	890	950	1000	1050	1100	1140	1190	1230	1270	1320					
	HL	840	890	950	1000	1050	1100	1140	1190	1230	1270	1320	1360				1400
E78-14	NL	780	840	890	930	980	1030	1070	1110	1150				4½	31.04	6.65	
	ML	780	840	890	930	980	1030	1070	1110	1150	1190	1230					
	HL	780	840	890	930	980	1030	1070	1110	1150	1190	1230	1270				1300
C78-14	NL	840	890	950	1000	1050	1100	1140	1190	1230				5	31.95	7.05	
	ML	840	890	950	1000	1050	1100	1140	1190	1230	1270	1320					
	HL	840	890	950	1000	1050	1100	1140	1190	1230	1270	1320	1360				1400
D78-13	NL	890	950	1010	1070	1120	1170	1220	1270	1320				5½	32.18	7.70	
	ML	890	950	1010	1070	1120	1170	1220	1270	1320	1360	1410					
	HL	890	950	1010	1070	1120	1170	1220	1270	1320	1360	1410	1450				1490
D78-14	NL	890	950	1010	1070	1120	1170	1220	1270	1320				5	32.52	7.35	
	ML	890	950	1010	1070	1120	1170	1220	1270	1320	1360	1410					
	HL	890	950	1010	1070	1120	1170	1220	1270	1320	1360	1410	1450				1490
E78-14	NL	950	1010	1070	1130	1190	1240	1300	1350	1400				5½	33.29	7.65	
	ML	950	1010	1070	1130	1190	1240	1300	1350	1400	1440	1490					
	HL	950	1010	1070	1130	1190	1240	1300	1350	1400	1440	1490	1540				1580
F78-14	NL	1020	1090	1160	1220	1280	1340	1400	1450	1500				5½	34.04	7.90	
	ML	1020	1090	1160	1220	1280	1340	1400	1450	1500	1550	1610					
	HL	1020	1090	1160	1220	1280	1340	1400	1450	1500	1550	1610	1650				1700
G78-14	NL	1100	1180	1250	1310	1380	1440	1500	1560	1620				6	35.02	8.35	
	ML	1100	1180	1250	1310	1380	1440	1500	1560	1620	1680	1730					
	HL	1100	1180	1250	1310	1380	1440	1500	1560	1620	1680	1730	1780				1830
E78-14	NL	1200	1290	1360	1440	1510	1580	1650	1710	1770				6	36.06	8.70	
	ML	1200	1290	1360	1440	1510	1580	1650	1710	1770	1830	1890					
	HL	1200	1290	1360	1440	1510	1580	1650	1710	1770	1830	1890	1950				2010
J78-14	NL	1260	1350	1430	1500	1580	1650	1720	1790	1860				6	36.58	8.80	
	ML	1260	1350	1430	1500	1580	1650	1720	1790	1860	1920	1980					
	HL	1260	1350	1430	1500	1580	1650	1720	1790	1860	1920	1980	2040				2100
A78-15	NL	720	770	810	860	900	940	980	1020	1060				4½	30.85	6.35	
	ML	720	770	810	860	900	940	980	1020	1060	1090	1130					
	HL	720	770	810	860	900	940	980	1020	1060	1090	1130	1160				1200
C78-15	NL	840	890	950	1000	1050	1100	1140	1190	1230				5	32.45	6.95	
	ML	840	890	950	1000	1050	1100	1140	1190	1230	1270	1320					
	HL	840	890	950	1000	1050	1100	1140	1190	1230	1270	1320	1360				1400
D78-15	NL	890	950	1010	1070	1120	1170	1220	1270	1320				5	33.05	7.15	
	ML	890	950	1010	1070	1120	1170	1220	1270	1320	1360	1410					
	HL	890	950	1010	1070	1120	1170	1220	1270	1320	1360	1410	1450				1490
E78-15	NL	950	1010	1070	1130	1190	1240	1300	1350	1400				5	33.65	7.35	
	ML	950	1010	1070	1130	1190	1240	1300	1350	1400	1440	1490					
	HL	950	1010	1070	1130	1190	1240	1300	1350	1400	1440	1490	1540				1580
F78-15	NL	1020	1090	1160	1220	1280	1340	1400	1450	1500				5½	34.56	7.70	
	ML	1020	1090	1160	1220	1280	1340	1400	1450	1500	1550	1610					
	HL	1020	1090	1160	1220	1280	1340	1400	1450	1500	1550	1610	1650				1700

NOTES:

The '-' in the tyre size designation represents a performance rating. Tyre size designation shall include the letters L,S,H or V in place of the '-' if appropriate.

If the tyre is of belted bias or bias belted construction, the tyre size designation shall include the letter B as the second character of the designation.

*Amended February 1988

TABLE 1.0(J) (CONTINUED)

*

Tyre size designation	Load range	Maximum tyre loads (pounds) at various cold inflation pressures (p.s.i.)												Test rim width (inches)	Minimum size factor (inches)	Section width (inches)				
		16	18	20	22	24	26	28	30	32	34	36	38				40			
G78-15	NL	1100	1180	1250	1310	1380	1440	1500	1560	1620					5½	35.36	8.05			
	ML	1100	1180	1250	1310	1380	1440	1500	1560	1620	1680	1730								
	HL	1100	1180	1250	1310	1380	1440	1500	1560	1620	1680	1730	1780	1830						
H78-15	NL	1200	1290	1360	1440	1510	1580	1650	1710	1770					6	36.50	8.55			
	ML	1200	1290	1360	1440	1510	1580	1650	1710	1770	1830	1890								
	HL	1200	1290	1360	1440	1510	1580	1650	1710	1770	1830	1890	1950	2010						
J78-15	NL	1260	1350	1430	1500	1580	1650	1720	1790	1860					6	37.02	8.70			
	ML	1260	1350	1430	1500	1580	1650	1720	1790	1860	1920	1980								
	HL	1260	1350	1430	1500	1580	1650	1720	1790	1860	1920	1980	2040	2100						
L78-15	NL	1340	1430	1520	1600	1680	1750	1830	1900	1970					6	37.73	8.85			
	ML	1340	1430	1520	1600	1680	1750	1830	1900	1970	2040	2100								
	HL	1340	1430	1520	1600	1680	1750	1830	1900	1970	2040	2100	2170	2230						
N78-15	NL	1500	1600	1700	1790	1880	1970	2050	2130	2210					7	39.50	9.80			
	ML	1500	1600	1700	1790	1880	1970	2050	2130	2210	2280	2360								
	HL	1500	1600	1700	1790	1880	1970	2050	2130	2210	2280	2360	2430	2500						
Y78-12	NL	600	650	690	730	770	810	840	870	900					4½	27.90	6.35			
	ML	600	650	690	730	770	810	840	870	900	930	960								
Y78-13	NL	600	650	690	730	770	810	840	870	900				4½	28.44	6.20				
	ML	600	650	690	730	770	810	840	870	900	930	960								
Z78-12	NL	640	700	750	790	830	860	900	940	970				4½	28.52	6.55				
	ML	640	700	750	790	830	860	900	940	970	1010	1040								
Z78-13	NL	640	700	750	790	830	860	900	940	970				4½	29.04	6.40				
	ML	640	700	750	790	830	860	900	940	970	1010	1040								
B78-15	NL	780	840	850	930	980	1030	1070	1110	1150				4½	31.62	6.55				
	ML	780	840	850	930	980	1030	1070	1110	1150	1190	1230								
	HL	780	840	850	930	980	1030	1070	1110	1150	1190	1230	1270				1300			

NOTES:

The '-' in the tyre size designation represents a performance rating. Tyre size designation shall include the letters L, S, H or V in place of the '-' if appropriate.

If the tyre is of belted bias or bias belted construction, the tyre size designation shall include the letter B as the second character of the designation.

TYRE LOAD RATINGS, TEST RIMS, MINIMUM SIZE FACTORS AND SECTION WIDTHS FOR "60 SERIES" BIAS PLY TYRES

Tyre size designation	Load range	Maximum tyre loads (pounds) at various cold inflation pressures (p.s.i.)												Test rim width (inches)	Minimum size factor (inches)	Section width (inches)	
		16	18	20	22	24	26	28	30	32	34	36	38				40
A60-13	NL	720	770	810	860	900	940	980	1020	1060					5½	30.00	7.85
	ML	720	770	810	860	900	940	980	1020	1060	1090	1130					
	HL	720	770	810	860	900	940	980	1020	1060	1090	1130	1160	1200			
B60-13	NL	780	840	890	930	980	1030	1070	1110	1150				6	30.95	8.35	
	ML	780	840	890	930	980	1030	1070	1110	1150	1190	1230					
	HL	780	840	890	930	980	1030	1070	1110	1150	1190	1230	1270				1300
C60-13	NL	840	890	950	1000	1050	1100	1140	1190	1230				6	31.50	8.60	
	ML	840	890	950	1000	1050	1100	1140	1190	1230	1270	1320					
	HL	840	890	950	1000	1050	1100	1140	1190	1230	1270	1320	1360				1400
D60-13	NL	890	950	1010	1070	1120	1170	1220	1270	1320				6	32.20	8.85	
	ML	890	950	1010	1070	1120	1170	1220	1270	1320	1360	1410					
	HL	890	950	1010	1070	1120	1170	1220	1270	1320	1360	1410	1450				1490
D60-14	NL	890	950	1010	1070	1120	1170	1220	1270	1320				6	32.72	8.85	
	ML	890	950	1010	1070	1120	1170	1220	1270	1320	1360	1410					
	HL	890	950	1010	1070	1120	1170	1220	1270	1320	1360	1410	1450				1490
E60-14	NL	950	1010	1070	1130	1190	1240	1300	1350	1400				7	33.69	9.30	
	ML	950	1010	1070	1130	1190	1240	1300	1350	1400	1440	1490					
	HL	950	1010	1070	1130	1190	1240	1300	1350	1400	1440	1490	1540				1580
F60-14	NL	1020	1090	1160	1220	1280	1340	1400	1450	1500				7	34.44	9.55	
	ML	1020	1090	1160	1220	1280	1340	1400	1450	1500	1550	1610					
	HL	1020	1090	1160	1220	1280	1340	1400	1450	1500	1550	1610	1650				1700
G60-14	NL	1100	1180	1250	1310	1380	1440	1500	1560	1620				7	35.23	9.85	
	ML	1100	1180	1250	1310	1380	1440	1500	1560	1620	1680	1730					
	HL	1100	1180	1250	1310	1380	1440	1500	1560	1620	1680	1730	1780				1830
H60-14	NL	1200	1290	1360	1440	1510	1580	1650	1710	1770				7	36.20	10.25	
	ML	1200	1290	1360	1440	1510	1580	1650	1710	1770	1830	1890					
	HL	1200	1290	1360	1440	1510	1580	1650	1710	1770	1830	1890	1950				2010
J60-14	NL	1260	1350	1430	1500	1580	1650	1720	1790	1860				7	36.70	10.45	
	ML	1260	1350	1430	1500	1580	1650	1720	1790	1860	1920	1980					
	HL	1260	1350	1430	1500	1580	1650	1720	1790	1860	1920	1980	2040				2100
L60-14	NL	1340	1430	1520	1600	1680	1750	1830	1900	1970				8	37.83	11.10	
	ML	1340	1430	1520	1600	1680	1750	1830	1900	1970	2040	2100					
	HL	1340	1430	1520	1600	1680	1750	1830	1900	1970	2040	2100	2170				2230
B60-15	NL	780	840	890	930	980	1030	1070	1110	1150				5½	31.65	7.80	
	ML	780	840	890	930	980	1030	1070	1110	1150	1190	1230					
	HL	780	840	890	930	980	1030	1070	1110	1150	1190	1230	1270				1300
C60-15	NL	840	890	950	1000	1050	1100	1140	1190	1230				6	32.66	8.25	
	ML	840	890	950	1000	1050	1100	1140	1190	1230	1270	1320					
	HL	840	890	950	1000	1050	1100	1140	1190	1230	1270	1320	1360				1400
E60-15	NL	950	1010	1070	1130	1190	1240	1300	1350	1400				6	33.83	8.70	
	ML	950	1010	1070	1130	1190	1240	1300	1350	1400	1440	1490					
	HL	950	1010	1070	1130	1190	1240	1300	1350	1400	1440	1490	1540				1580
F60-15	NL	1020	1090	1160	1220	1280	1340	1400	1450	1500				7	34.75	9.40	
	ML	1020	1090	1160	1220	1280	1340	1400	1450	1500	1550	1610					
	HL	1020	1090	1160	1220	1280	1340	1400	1450	1500	1550	1610	1650				1700
G60-15	NL	1100	1180	1250	1310	1380	1440	1500	1560	1620				7	35.73	9.70	
	ML	1100	1180	1250	1310	1380	1440	1500	1560	1620	1680	1730					
	HL	1100	1180	1250	1310	1380	1440	1500	1560	1620	1680	1730	1780				1830
H60-15	NL	1200	1290	1360	1440	1510	1580	1650	1710	1770				7	36.70	10.05	
	ML	1200	1290	1360	1440	1510	1580	1650	1710	1770	1830	1890					
	HL	1200	1290	1360	1440	1510	1580	1650	1710	1770	1830	1890	1950				2010

NOTES:

1. The '-' in the tyre size designation represents a performance rating. Tyre size designation shall include the letters L,S,H or V in place of the '-' if appropriate.
2. If the tyre is of belted bias or bias belted construction, the tyre size designation shall include the letter B as the second character of the designation.

TABLE 1.0 (K) (CONTINUED)

*

Tyre size designation	Load range	Maximum tyre loads (pounds) at various cold inflation pressures (p.s.i.)												Test rim width (inches)	Minimum size factor (inches)	Section width (inches)	
		16	18	20	22	24	26	28	30	32	34	36	38				40
J60-15	NL	1260	1350	1430	1500	1580	1650	1720	1790	1860					7	37.20	10.25
	ML	1260	1350	1430	1500	1580	1650	1720	1790	1860	1920	1980					
	HL	1260	1350	1430	1500	1580	1650	1720	1790	1860	1920	1980	2040	2100			
L60-15	NL	1340	1430	1520	1600	1680	1750	1830	1900	1970					7	37.91	10.50
	ML	1340	1430	1520	1600	1680	1750	1830	1900	1970	2040	2100					
	HL	1340	1430	1520	1600	1680	1750	1830	1900	1970	2040	2100	2170	2230			

NOTES:

1. The '-' in the tyre size designation represents a performance rating. Tyre size designation shall include the letters L, S, H or V in place of the '-' if appropriate.
2. If the tyre is of belted bias or bias belted construction, the tyre size designation shall include the letter B as the second character of the designation.

TABLE 1 - TYRE LOAD RATINGS, TEST RIMS MINIMUM SIZE FACTORS AND SECTION WIDTHS

TABLE 1.0 (L)

*

TYRE LOAD RATINGS, TEST RIMS, MINIMUM SIZE FACTORS AND SECTION WIDTHS FOR SERIES 50 CANTILEVERED SIDEWALL TYRES

Tyre size designation	Load range	Maximum tyre loads (pounds) at various cold inflation pressures (p.s.i.)												Test rim width (inches)	Minimum size factor (inches)	Section width (inches)	
		16	18	20	22	24	26	28	30	32	34	36	38				40
E50C-16	NL			1070	1130	1190	1240	1300	1350	1400					3½	33.31	7.95
	ML			1070	1130	1190	1240	1300	1350	1400	1440	1490					
	HL			1070	1130	1190	1240	1300	1350	1400	1440	1490	1540	1580			
F50C-16	NL			1160	1220	1280	1340	1400	1450	1500					3½	34.04	8.20
	ML			1160	1220	1280	1340	1400	1450	1500	1550	1610					
	HL			1160	1220	1280	1340	1400	1450	1500	1550	1610	1650	1700			
G50C-17	NL			1250	1310	1380	1440	1500	1560	1620					3½	35.34	8.45
	ML			1250	1310	1380	1440	1500	1560	1620	1680	1730					
	HL			1250	1310	1380	1440	1500	1560	1620	1680	1730	1780	1830			
H50C-17	NL			1360	1440	1510	1580	1650	1710	1770					3½	36.30	8.80
	ML			1360	1440	1510	1580	1650	1710	1770	1830	1890					
	HL			1360	1440	1510	1580	1650	1710	1770	1830	1890	1950	2010			
L50C-18	NL			1520	1600	1680	1750	1830	1900	1970					3½	38.00	9.10
	ML			1520	1600	1680	1750	1830	1900	1970	2040	2100					
	HL			1520	1600	1680	1750	1830	1900	1970	2040	2100	2170	2230			

NOTE: The '-' in the tyre size designation represents a performance rating. Tyre size designation shall include the letters S, H or V in place of the '-' if appropriate.

TABLE 1 - TYRE LOAD RATINGS, TEST RIMS, MINIMUM SIZE FACTORS AND SECTION WIDTHS

TABLE 1.9 (M)

APR 23

TYRE LOAD RATINGS, TEST RIMS, MINIMUM SIZE FACTORS AND SECTION WIDTHS FOR "78 SERIES" RADIAL PLY TYRES

Tyre size designation	Load range	Maximum tyre loads (pounds) at various cold inflation pressures (p.s.i.)												Test rim width (inches)	Minimum size factor (inches)	Section width (inches)	
		16	18	20	22	24	26	28	30	32	34	36	38				40
ZR78-12	NL	540	700	750	790	830	860	900	940	970					4½	28.34	6.45
	ML	640	700	750	790	830	860	900	940	970	1010	1040					
	HL	640	700	750	790	830	860	900	940	970	1010	1040	1080	1110			
YR78-12	NL	500	650	690	730	770	810	840	870	900				4	27.51	6.05	
	ML	600	650	690	730	770	810	840	870	900	930	960					
	HL	600	650	690	730	770	810	840	870	900	930	960	990				1020
AR78-13	NL	720	770	810	860	900	940	980	1020	1060				4½	29.55	6.50	
	ML	720	770	810	860	900	940	980	1020	1060	1090	1130					
	HL	720	770	810	860	900	940	980	1020	1060	1090	1130	1160				1200
BR78-13	NL	780	840	890	930	990	1030	1070	1110	1150				4½	30.31	6.75	
	ML	780	840	890	930	990	1030	1070	1110	1150	1190	1230					
	HL	780	840	890	930	990	1030	1070	1110	1150	1190	1230	1270				1300
CR78-13	NL	840	890	950	1000	1050	1100	1140	1190	1230				5	31.13	7.15	
	ML	840	890	950	1000	1050	1100	1140	1190	1230	1270	1320					
	HL	840	890	950	1000	1050	1100	1140	1190	1230	1270	1320	1360				1400
YR78-13	NL	600	650	690	730	770	810	840	870	900				4	28.02	5.90	
	ML	600	650	690	730	770	810	840	870	900	930	960					
	HL	600	650	690	730	770	810	840	870	900	930	960	990				1020
ZR78-13	NL	640	700	750	790	830	860	900	940	970				4	28.85	6.30	
	ML	640	700	750	790	830	860	900	940	970	1010	1040					
	HL	640	700	750	790	830	860	900	940	970	1010	1040	1080				1110
BR78-14	NL	780	840	890	930	980	1030	1070	1110	1150				4½	30.84	6.60	
	ML	780	840	890	930	980	1030	1070	1110	1150	1190	1230					
	HL	780	840	890	930	980	1030	1070	1110	1150	1190	1230	1270				1300
CR78-14	NL	840	890	950	1000	1050	1100	1140	1190	1230				5	31.67	7.00	
	ML	840	890	950	1000	1050	1100	1140	1190	1230	1270	1320					
	HL	840	890	950	1000	1050	1100	1140	1190	1230	1270	1320	1360				1400
DR78-14	NL	890	950	1010	1070	1120	1170	1220	1270	1320				5	32.26	7.20	
	ML	890	950	1010	1070	1120	1170	1220	1270	1320	1360	1410					
	HL	890	950	1010	1070	1120	1170	1220	1270	1320	1360	1410	1450				1490
ER78-14	NL	950	1010	1070	1130	1190	1240	1300	1350	1400				5	32.86	7.40	
	ML	950	1010	1070	1130	1190	1240	1300	1350	1400	1440	1490					
	HL	950	1010	1070	1130	1190	1240	1300	1350	1400	1440	1490	1540				1580
FR78-14	NL	1020	1090	1160	1220	1280	1340	1400	1450	1500				5½	33.78	7.85	
	ML	1020	1090	1160	1220	1280	1340	1400	1450	1500	1550	1610					
	HL	1020	1090	1160	1220	1280	1340	1400	1450	1500	1550	1610	1650				1700
GR78-14	NL	1100	1180	1250	1310	1380	1440	1500	1560	1620				6	34.70	8.30	
	ML	1100	1180	1250	1310	1380	1440	1500	1560	1620	1680	1730					
	HL	1100	1180	1250	1310	1380	1440	1500	1560	1620	1680	1730	1780				1830
HR78-14	NL	1200	1290	1360	1440	1510	1580	1650	1710	1770				6	35.77	8.60	
	ML	1200	1290	1360	1440	1510	1580	1650	1710	1770	1830	1890					
	HL	1200	1290	1360	1440	1510	1580	1650	1710	1770	1830	1890	1950				2010
JR78-14	NL	1260	1350	1430	1500	1580	1650	1720	1790	1860				6½	36.47	8.95	
	ML	1260	1350	1430	1500	1580	1650	1720	1790	1860	1920	1980					
	HL	1260	1350	1430	1500	1580	1650	1720	1790	1860	1920	1980	2040				2100
YR78-14	NL	600	650	690	730	770	810	840	870	900				4	28.58	5.75	
	ML	600	650	690	730	770	810	840	870	900	930	960					
	HL	600	650	690	730	770	810	840	870	900	930	960	990				1020
AR78-15	NL	720	770	810	860	900	940	980	1020	1060				4½	30.66	6.25	
	ML	720	770	810	860	900	940	980	1020	1060	1090	1130					
	HL	720	770	810	860	900	940	980	1020	1060	1090	1130	1160				1200

NOTE:

The '-' in the tyre size designation represents a performance rating. Tyre size designation shall include the letters S, R or V in place of the '-' if appropriate.

TABLE 1.0(M) (CONTINUED)

Tyre size designation	Load range	Maximum tyre loads (pounds) at various cold inflation pressures (p.s.i.)												Test rim width (inches)	Minimum size factor (inches)	Section width (inches)	
		16	18	20	22	24	26	28	30	32	34	36	38				40
BR78-15	NL	780	840	890	930	980	1030	1070	1110	1150					4½	31.38	6.45
	ML	780	840	890	930	980	1030	1070	1110	1150	1190	1230					
	HL	780	840	890	930	980	1030	1070	1110	1150	1190	1230	1270	1300			
CR78-15	NL	840	890	950	1000	1050	1100	1140	1190	1230					5	32.24	6.85
	ML	840	890	950	1000	1050	1100	1140	1190	1230	1270	1320					
	HL	840	890	950	1000	1050	1100	1140	1190	1230	1270	1320	1360	1400			
DR78-15	NL			640	680	710	740	770	800	830					4	28.59	5.45
	ML			640	680	710	740	770	800	830	860	890					
	HL			640	680	710	740	770	800	830	860	890	920	940			
ER78-15	NL	950	1010	1070	1130	1190	1240	1300	1350	1400					5½	33.58	7.45
	ML	950	1010	1070	1130	1190	1240	1300	1350	1400	1440	1490					
	HL	950	1010	1070	1130	1190	1240	1300	1350	1400	1440	1490	1540	1580			
FR78-15	NL	1020	1090	1160	1220	1280	1340	1400	1450	1500					5½	34.28	7.70
	ML	1020	1090	1160	1220	1280	1340	1400	1450	1500	1550	1610					
	HL	1020	1090	1160	1220	1280	1340	1400	1450	1500	1550	1610	1650	1700			
GR78-15	NL	1100	1180	1250	1310	1380	1440	1500	1560	1620					6	35.30	8.15
	ML	1100	1180	1250	1310	1380	1440	1500	1560	1620	1680	1730					
	HL	1100	1180	1250	1310	1380	1440	1500	1560	1620	1680	1730	1780	1830			
HR78-15	NL	1200	1290	1360	1440	1510	1580	1650	1710	1770					6	36.23	8.45
	ML	1200	1290	1360	1440	1510	1580	1650	1710	1770	1830	1890					
	HL	1200	1290	1360	1440	1510	1580	1650	1710	1770	1830	1890	1950	2010			
JR78-15	NL	1260	1350	1430	1500	1580	1650	1720	1790	1860					6½	36.98	8.80
	ML	1260	1350	1430	1500	1580	1650	1720	1790	1860	1920	1980					
	HL	1260	1350	1430	1500	1580	1650	1720	1790	1860	1920	1980	2040	2100			
LR78-15	NL	1340	1430	1520	1600	1680	1750	1830	1900	1970					6½	37.66	9.00
	ML	1340	1430	1520	1600	1680	1750	1830	1900	1970	2040	2100					
	HL	1340	1430	1520	1600	1680	1750	1830	1900	1970	2040	2100	2170	2230			
MR78-15	NL	1420	1520	1610	1700	1780	1860	1940	2020	2090					6½	38.35	9.20
	ML	1420	1520	1610	1700	1780	1860	1940	2020	2090	2160	2230					
	HL	1420	1520	1610	1700	1780	1860	1940	2020	2090	2160	2230	2300	2370			
NR78-15	NL	1500	1600	1700	1790	1880	1970	2050	2130	2210					7	39.17	9.7
	ML	1500	1600	1700	1790	1880	1970	2050	2130	2210	2280	2360					
	HL	1500	1600	1700	1790	1880	1970	2050	2130	2210	2280	2360	2430	2500			
ZR78-15	NL	640	700	750	790	830	860	900	940	970					4	29.76	5.80
	ML	640	700	750	790	830	860	900	940	970	1010	1040					
	HL	640	700	750	790	830	860	900	940	970	1010	1040	1080	1110			

NOTE:

The '-' in the tyre size designation represents a performance rating. Tyre size designation shall include the letters S,H or V in place of the '-' if appropriate.

TYRE LOAD RATING TEST RIMS, MINIMUM SIZE FACTORS AND SECTION WIDTHS
FOR '70 SERIES' RADIAL PLY TYRES

Tyre size designation	Load range	Maximum tyre loads (pounds) at various cold inflation pressures (p.s.i.)													Test rim width (ins)	Min. size factor (ins)	Section width (inches)
		16	18	20	22	24	26	28	30	32	34	36	38	40			
165/70R10	NL	585	600	615	630	650	665	680	700	715					4½	25.50	6.50
	ML	585	600	615	630	650	665	680	700	715	730	745					
	HL	585	600	615	630	650	665	680	700	715	730	745	760	780			
155/70R12	NL	580	595	615	630	650	665	685	700	720				4	26.13	5.93	
	ML	580	595	615	630	650	665	685	700	720	735	750					
	HL	580	595	615	630	650	665	685	700	720	735	750	765				780
165/70R12	NL	665	680	700	720	740	760	780	795	815				4½	27.43	6.50	
	ML	665	680	700	720	740	760	780	795	815	835	850					
	HL	665	680	700	720	740	760	780	795	815	835	850	870				890
175/70R12	NL			780	805	830	855	880	900	925				5	28.21	6.92	
	ML			780	805	830	855	880	900	925	950	970					
	HL			780	805	830	855	880	900	925	950	970	995				1020
145/70R13	NL	545	560	580	600	615	630	650	665	685				4	26.44	5.67	
	ML	545	560	580	600	615	630	650	665	685	700	720					
	HL	545	560	580	600	615	630	650	665	685	700	720	735				750
155/70R13	NL	630	650	665	685	705	725	740	760	780				4	27.17	5.93	
	ML	630	650	665	685	705	725	740	760	780	800	820					
	HL	630	650	665	685	705	725	740	760	780	800	820	835				855
165/70R13	NL			750	770	795	815	835	860	880				4½	28.45	6.50	
	ML			750	770	795	815	835	860	880	900	920					
	HL			750	770	795	815	835	860	880	900	920	940				960
175/70R13	NL			845	865	890	910	935	955	980				5	29.31	6.92	
	ML			845	865	890	910	935	955	980	1000	1025					
	HL			845	865	890	910	935	955	980	1000	1025	1045				1070
185/70R13	NL			940	965	990	1015	1040	1065	1090				5	30.39	7.31	
	ML			940	965	990	1015	1040	1065	1090	1115	1140					
	HL			940	965	990	1015	1040	1065	1090	1115	1140	1165				1190
195/70R13	NL			1045	1070	1100	1125	1155	1180	1210				5½	31.20	7.74	
	ML			1045	1070	1100	1125	1155	1180	1210	1240	1265					
	HL			1045	1070	1100	1125	1155	1180	1210	1240	1265	1290				1320
205/70R13	NL	890	950	1010	1070	1120	1170	1220	1270	1320				5½	32.29	8.05	
	ML	890	950	1010	1070	1120	1170	1220	1270	1320	1360	1410					
	HL	890	950	1010	1070	1120	1170	1220	1270	1320	1360	1410	1450				1490
155/70R14	NL			700	720	740	760	780	795	815				4	28.15	5.93	
	ML			700	720	740	760	780	795	815	835	850					
	HL			700	720	740	760	780	795	815	835	850	870				890
165/70R14	NL			725	765	800	835	875	905	940				4½	29.31	6.50	
	ML			725	765	800	835	875	905	940	970	1005					
	HL			725	765	800	835	875	905	940	970	1005	1035				1065
175/70R14	NL			880	905	925	950	975	1000	1025				5	30.33	6.92	
	ML			880	905	925	950	975	1000	1025	1050	1075					
	HL			880	905	925	950	975	1000	1025	1050	1075	1100				1125
185/70R14	NL			990	1015	1045	1070	1100	1130	1155				5	31.39	7.31	
	ML			990	1015	1045	1070	1100	1130	1155	1180	1210					
	HL			990	1015	1045	1070	1100	1130	1155	1180	1210	1235				1265
195/70R14	NL			1090	1120	1155	1185	1220	1250	1280				5½	32.30	7.74	
	ML			1090	1120	1155	1185	1220	1250	1280	1310	1340					
	HL			1090	1120	1155	1185	1220	1250	1280	1310	1340	1375				1405

NOTE: The tyre size designation shall include immediately before the letter 'R', the letters 'S', 'E' or 'V' if appropriate

* Amended August 1982

TABLE 1.0(N) cont.
TYRE LOAD RATING TEST RIMS, MINIMUM SIZE FACTORS AND SECTION WIDTHS
FOR '70 SERIES' RADIAL PLY TYRES

Tyre size designation	Load range	Maximum tyre loads (pounds) at various cold inflation pressures (p.s.i.)													Test rim width (ins)	Min. size factor (ins)	Section width (inches)
		16	18	20	22	24	26	28	30	32	34	36	38	40			
205/70R14	NL	950	1010	1070	1130	1190	1240	1300	1350	1400					5½	33.42	8.10
	ML	950	1010	1070	1130	1190	1240	1300	1350	1400	1440	1490					
	HL	950	1010	1070	1130	1190	1240	1300	1350	1400	1440	1490	1540	1580			
215/70R14	NL	1020	1090	1160	1220	1280	1340	1400	1450	1500					6	34.34	8.55
	ML	1020	1090	1160	1220	1280	1340	1400	1450	1500	1550	1610					
	HL	1020	1090	1160	1220	1280	1340	1400	1450	1500	1550	1610	1650	1700			
225/70R14	NL	1100	1180	1250	1310	1380	1440	1500	1560	1620					6	35.12	8.85
	ML	1100	1180	1250	1310	1380	1440	1500	1560	1620	1680	1730					
	HL	1100	1180	1250	1310	1380	1440	1500	1560	1620	1680	1730	1780	1830			
155/70R15	NL	690	710	730	750	770	790	810	830	850					4	29.2	5.93
	ML	690	710	730	750	770	790	810	830	850	870	890					
	HL	690	710	730	750	770	790	810	830	850	870	890	910	930			
175/70R15	NL			940	965	990	1015	1040	1065	1090					5	31.36	6.92
	ML			940	965	990	1015	1040	1065	1090	1115	1140					
	HL			940	965	990	1015	1040	1065	1090	1115	1140	1165	1190			
185/70R15	NL			1040	1070	1100	1130	1155	1180	1210					5	32.34	7.31
	ML			1040	1070	1100	1130	1155	1180	1210	1235	1265					
	HL			1040	1070	1100	1130	1155	1180	1210	1235	1265	1290	1320			
195/70R15	NL	890	950	1010	1070	1120	1170	1220	1270	1320					5½	33.34	7.75
	ML	890	950	1010	1070	1120	1170	1220	1270	1320	1360	1410					
	HL	890	950	1010	1070	1120	1170	1220	1270	1320	1360	1410	1450	1490			
205/70R15	NL	950	1010	1070	1130	1190	1240	1300	1350	1400					5½	33.91	7.95
	ML	950	1010	1070	1130	1190	1240	1300	1350	1400	1440	1490					
	HL	950	1010	1070	1130	1190	1240	1300	1350	1400	1440	1490	1540	1580			
215/70R15	NL	1020	1090	1160	1220	1280	1340	1400	1450	1500					6	34.87	8.40
	ML	1020	1090	1160	1220	1280	1340	1400	1450	1500	1550	1610					
	HL	1020	1090	1160	1220	1280	1340	1400	1450	1500	1550	1610	1650	1700			
225/70R15	NL	1100	1180	1250	1310	1380	1440	1500	1560	1620					6	35.65	8.65
	ML	1100	1180	1250	1310	1380	1440	1500	1560	1620	1680	1730					
	HL	1100	1180	1250	1310	1380	1440	1500	1560	1620	1680	1730	1780	1830			
235/70R15	NL	1200	1290	1360	1440	1510	1580	1650	1710	1770					6½	36.87	9.20
	ML	1200	1290	1360	1440	1510	1580	1650	1710	1770	1830	1890					
	HL	1200	1290	1360	1440	1510	1580	1650	1710	1770	1830	1890	1950	2010			

NCTE: The tyre size designation shall include immediately before the letter 'R', the letters 'S,E' or 'V' if appropriate

* Amended August 1982

TABLE 1 - TYRE LOAD RATINGS, TEST RIMS MINIMUM SIZE FACTORS AND SECTION WIDTHS

TABLE 1.0(O)

TYRE LOAD RATINGS, TEST RIMS, MINIMUM SIZE FACTORS AND SECTION WIDTHS FOR 'LOW SECTION' TYPE 'R' RADIAL PLY TYRES

Tyre size designation	Load range	Maximum tyre loads (pounds) at various cold inflation pressures (p.s.i.)												Test rim width (inches)	Minimum size factor (inches)	Section width (inches)	
		16	18	20	22	24	26	28	30	32	34	36	38				40
14OR12	NL			490	520	550	580	610	640	660					4	26.2	5.40
	ML			490	520	550	580	610	640	660	690	710					
	HL			490	520	550	580	610	640	660	690	710	740	770			
15OR12	NL			570	610	640	670	700	730	760					4	27.19	5.75
	ML			570	610	640	670	700	730	760	790	820					
	HL			570	610	640	670	700	730	760	790	820	850	880			
15OR13	NL			600	640	680	720	750	780	810					4	28.17	5.75
	ML			600	640	680	720	750	780	810	840	870					
	HL			600	640	680	720	750	780	810	840	870	900	940			
16OR13	NL			670	700	740	780	820	860	900					4½	29.23	6.25
	ML			670	700	740	780	820	860	900	940	980					
	HL			670	700	740	780	820	860	900	940	980	1010	1040			
7OR13	NL			720	760	800	840	880	920	960					5	30.08	6.60
	ML			720	760	800	840	880	920	960	1000	1040					
	HL			720	760	800	840	880	920	960	1000	1040	1080	1110			
15OR14	NL			640	670	710	750	780	820	860					4	29.16	5.75
	ML			640	670	710	750	780	820	860	900	940					
	HL			640	670	710	750	780	820	860	900	940	970	1000			
18OR15	NL			920	970	1020	1070	1120	1170	1230					5	32.97	6.85
	ML			920	970	1020	1070	1120	1170	1230	1280	1330					
	HL			920	970	1020	1070	1120	1170	1230	1280	1330	1380	1430			

NOTE:

Tyre size designation shall include immediately before the letter R, the letters S,H or V if appropriate.

TABLE 1 - TYRE LOAD RATINGS, TEST RIMS MINIMUM SIZE FACTORS AND SECTION WIDTHS

TABLE 1.0(P)

TYRE LOAD RATING, TEST RIMS, MINIMUM SIZE FACTORS AND SECTION WIDTHS FOR SERIES 45 CANTILEVERED SIDEWALL TYRES

Tyre size designation	Load range	Maximum tyre loads (pounds) at various cold inflation pressures (p.s.i.)												Test rim width (inches)	Minimum size factor (inches)	Section width (inches)	
		16	18	20	22	24	26	28	30	32	34	36	38				40
G45C-16	NL			1250	1310	1380	1440	1500	1560	1620					5	35.53	9.70
	ML			1250	1310	1380	1440	1500	1560	1620	1680						
	HL			1250	1310	1380	1440	1500	1560	1620	1680	1730	1780	1830			

NOTE: The '-' in the tyre size designation represents a performance rating. Tyre size designation shall include the letters S, H or V in place of the '-' if appropriate.

*Amended February 1981

TABLE 1 - TYRE LOAD RATINGS, TEST RIMS MINIMUM SIZE FACTORS AND SECTION WIDTHS

TABLE 1.0(R)

TYRE LOAD RATINGS, TEST RIMS, MINIMUM SIZE FACTORS, AND SECTION WIDTHS FOR '60 SERIES' RADIAL PLY TYRES

Tyre size designation	Load range	Maximum tyre loads (pounds) at various cold inflation pressures (p.s.i.)												Test rim width (inches)	Minimum size factor (inches)	Section width (inches)			
		16	18	20	22	24	26	28	30	32	34	36	38				40		
AR60-13	NL	720	770	810	860	900	940	980	1020	1060							5½	30.00	7.35
	ML	720	770	810	860	900	940	980	1020	1060	1090	1130							
	HL	720	770	810	860	900	940	980	1020	1060	1090	1130	1160	1200					
BR60-13	NL	780	840	890	930	980	1030	1070	1110	1150							6	30.95	8.35
	ML	780	840	890	930	980	1030	1070	1110	1150	1190	1230							
	HL	780	840	890	930	980	1030	1070	1110	1150	1190	1230	1270	1300					
CR60-13	NL	840	890	950	1000	1050	1100	1140	1190	1230							6	31.58	8.60
	ML	840	890	950	1000	1050	1100	1140	1190	1230	1270	1320							
	HL	840	890	950	1000	1050	1100	1140	1190	1230	1270	1320	1360	1400					
DR60-13	NL	890	950	1010	1070	1120	1170	1220	1270	1320							6½	32.40	9.05
	ML	890	950	1010	1070	1120	1170	1220	1270	1320	1360	1410							
	HL	890	950	1010	1070	1120	1170	1220	1270	1320	1360	1410	1450	1490					
ER60-13	NL	950	1010	1070	1130	1190	1240	1300	1350	1400							6	32.81	9.05
	ML	950	1010	1070	1130	1190	1240	1300	1350	1400	1440	1490							
	HL	950	1010	1070	1130	1190	1240	1300	1350	1400	1440	1490	1540	1580					
FR60-13	NL	950	1010	1070	1130	1190	1290	1300	1350	1400							6½	33.01	9.25
	ML	950	1010	1070	1130	1190	1290	1300	1350	1400	1440	1490							
	HL	950	1010	1070	1130	1190	1290	1300	1350	1400	1440	1490	1540	1580					
AR60-14	NL	720	770	810	860	900	940	980	1020	1060							5½	30.54	7.70
	ML	720	770	810	860	900	940	980	1020	1060	1090	1130							
	HL	720	770	810	860	900	940	980	1020	1060	1090	1130	1160	1200					
BR60-14	NL	780	840	890	930	980	1030	1070	1110	1150							5½	31.27	8.00
	ML	780	840	890	930	980	1030	1070	1110	1150	1190	1230							
	HL	780	840	890	930	980	1030	1070	1110	1150	1190	1230	1270	1300					
CR60-14	NL	840	890	950	1000	1050	1100	1140	1190	1230							6	32.10	8.45
	ML	840	890	950	1000	1050	1100	1140	1190	1230	1270	1320							
	HL	840	890	950	1000	1050	1100	1140	1190	1230	1270	1320	1360	1400					
DR60-14	NL	890	950	1010	1070	1120	1170	1220	1270	1320							6	32.72	8.65
	ML	890	950	1010	1070	1120	1170	1220	1270	1320	1360	1410							
	HL	890	950	1010	1070	1120	1170	1220	1270	1320	1360	1410	1450	1490					
ER60-14	NL	950	1010	1070	1130	1190	1240	1300	1350	1400							6½	33.50	9.10
	ML	950	1010	1070	1130	1190	1240	1300	1350	1400	1440	1490							
	HL	950	1010	1070	1130	1190	1240	1300	1350	1400	1440	1490	1540	1580					
FR60-14	NL	1020	1090	1160	1220	1280	1340	1400	1450	1500							6½	34.25	9.35
	ML	1020	1090	1160	1220	1280	1340	1400	1450	1500	1550	1610							
	HL	1020	1090	1160	1220	1280	1340	1400	1450	1500	1550	1610	1650	1700					
GR60-14	NL	1100	1180	1250	1310	1380	1440	1500	1560	1620							7	35.24	9.85
	ML	1100	1180	1250	1310	1380	1440	1500	1560	1620	1680	1730							
	HL	1100	1180	1250	1310	1380	1440	1500	1560	1620	1680	1730	1780	1830					
HR60-14	NL	1200	1290	1360	1440	1510	1580	1650	1710	1770							7	36.20	10.25
	ML	1200	1290	1360	1440	1510	1580	1650	1710	1770	1830	1890							
	HL	1200	1290	1360	1440	1510	1580	1650	1710	1770	1830	1890	1950	2010					
JR60-14	NL	1260	1350	1430	1500	1580	1650	1720	1790	1860							7	36.71	10.45
	ML	1260	1350	1430	1500	1580	1650	1720	1790	1860	1920	1980							
	HL	1260	1350	1430	1500	1580	1650	1720	1790	1860	1920	1980	2040	2100					
LR60-14	NL	1340	1430	1520	1600	1680	1750	1830	1900	1970							8	37.84	11.10
	ML	1340	1430	1520	1600	1680	1750	1830	1900	1970	2040	2100							
	HL	1340	1430	1520	1600	1680	1750	1830	1900	1970	2040	2100	2170	2230					
AR60-15	NL	720	770	810	860	900	940	980	1020	1060							5	30.90	7.35
	ML	720	770	810	860	900	940	980	1020	1060	1090	1130							
	HL	720	770	810	860	900	940	980	1020	1060	1090	1130	1160	1200					

NOTE: The '-' in the tyre size designation represents a performance rating. Tyre size designation shall include the letters S, H or V in place of the '-' if appropriate.

TABLE 1.0(B) (CONTINUED)

TYRE LOAD RATINGS, TEST RIMS, MINIMUM SIZE FACTORS, AND SECTION WIDTHS FOR '60 SERIES' RADIAL PLY TYRES

Tyre size designation	Load range	Maximum tyre loads (pounds) at various cold inflation pressures (p.s.i.)												Test rim width (inches)	Minimum size factor (inches)	Section width (inches)	
		16	18	20	22	24	26	28	30	32	34	36	38				40
BR60-15	NL	780	840	890	930	980	1030	1070	1110	1150					5½	31.85	7.80
	ML	780	840	890	930	980	1030	1070	1110	1150	1190	1230					
	HL	780	840	890	930	980	1030	1070	1110	1150	1190	1230	1270	1300			
CR60-15	NL	840	890	950	1000	1050	1100	1140	1190	1230					5½	32.46	8.05
	ML	840	890	950	1000	1050	1100	1140	1190	1230	1270	1320					
	HL	840	890	950	1000	1050	1100	1140	1190	1230	1270	1320	1360	1400			
DR60-15	NL	890	950	1010	1070	1120	1170	1220	1270	1320					6	33.25	8.50
	ML	890	950	1010	1070	1120	1170	1220	1270	1320	1360	1410					
	HL	890	950	1010	1070	1120	1170	1220	1270	1320	1360	1410	1450	1490			
ER60-15	NL	950	1010	1070	1130	1190	1240	1300	1350	1400					6	33.84	8.70
	ML	950	1010	1070	1130	1190	1240	1300	1350	1400	1440	1490					
	HL	950	1010	1070	1130	1190	1240	1300	1350	1400	1440	1490	1540	1580			
FR60-15	NL	1020	1090	1160	1220	1280	1340	1400	1450	1500					6½	34.75	9.20
	ML	1020	1090	1160	1220	1280	1340	1400	1450	1500	1550	1610					
	HL	1020	1090	1160	1220	1280	1340	1400	1450	1500	1550	1610	1650	1700			
GR60-15	NL	1100	1180	1250	1310	1380	1440	1500	1560	1620					6½	35.52	9.50
	ML	1100	1180	1250	1310	1380	1440	1500	1560	1620	1680	1730					
	HL	1100	1180	1250	1310	1380	1440	1500	1560	1620	1680	1730	1780	1830			
HR60-16	NL	1200	1290	1360	1440	1510	1580	1650	1710	1770					7	36.70	10.05
	ML	1200	1290	1360	1440	1510	1580	1650	1710	1770	1830	1890					
	HL	1200	1290	1360	1440	1510	1580	1650	1710	1770	1830	1890	1950	2010			
JR60-15	NL	1260	1350	1430	1500	1580	1650	1720	1790	1860					7	37.20	10.29
	ML	1260	1350	1430	1500	1580	1650	1720	1790	1860	1920	1980					
	HL	1260	1350	1430	1500	1580	1650	1720	1790	1860	1920	1980	2040	2100			
LR60-15	NL	1340	1430	1520	1600	1680	1750	1830	1900	1970					7	37.91	10.50
	ML	1340	1430	1520	1600	1680	1750	1830	1900	1970	2040	2100					
	HL	1340	1430	1520	1600	1680	1750	1830	1900	1970	2040	2100	2170	2230			

NOTE: The '-' in the tyre size designation represents a performance rating. Tyre size designation shall include the letters S, H or V in place of the '-' if appropriate.

TABLE 1 - TYRE LOAD RATINGS, TEST RIMS MINIMUM SIZE FACTORS AND SECTION WIDTHS

ADR 23

TABLE 1.0(S)

TYRE LOAD RATINGS, TEST RIMS, MINIMUM SIZE FACTORS, AND SECTION WIDTHS FOR '60 SERIES' RADIAL PLY TYRES

Tyre size Designation	Load Range	Maximum tyre loads (pounds) at various cold inflation pressures (p.s.i.)												Test rim width (inches)	Minimum size factor (inches)	Section width (inches)	
		16	18	20	22	24	26	28	30	32	34	36	38				40
185/60 R 13	NL			780	815	845	880	915	945	980					5	28.61	7.28
	ML			780	815	845	880	915	945	980	1010	1045					
	HL			780	815	845	880	915	945	980	1010	1045	1075	1110			
205/60 R 14	NL	780	840	890	930	980	1030	1070	1110	1150				6	31.62	8.19	
	ML	780	840	890	930	980	1030	1070	1110	1150	1190	1230					
	HL	780	840	890	930	980	1030	1070	1110	1150	1190	1230	1270	1300			
245/60 R 14	NL	1020	1090	1160	1220	1280	1340	1400	1450	1500				6½	34.25	9.35	
	ML	1020	1090	1160	1220	1280	1340	1400	1450	1500	1550	1610					
	HL	1020	1090	1160	1220	1280	1340	1400	1450	1500	1550	1610	1650	1700			
265/60 R 14	NL	1200	1290	1360	1440	1510	1580	1650	1710	1770				7	36.20	10.25	
	ML	1200	1290	1360	1440	1510	1580	1650	1710	1770	1830	1890					
	HL	1200	1290	1360	1440	1510	1580	1650	1710	1770	1830	1890	1950	2010			
215/60 R 15	NL	890	950	1010	1070	1120	1170	1220	1270	1320				6	33.25	8.50	
	ML	890	950	1010	1070	1120	1170	1220	1270	1320	1360	1410					
	HL	890	950	1010	1070	1120	1170	1220	1270	1320	1360	1410	1450	1490			
235/60 R 15	N1	1020	1090	1160	1220	1280	1340	1400	1450	1500				6½	34.75	9.20	
	ML	1020	1090	1160	1220	1280	1340	1400	1450	1500	1550	1610					
	HL	1020	1090	1160	1220	1280	1340	1400	1450	1500	1550	1610	1650	1700			
255/60 R 15	NL	1200	1290	1360	1440	1580	1650	1710	1770					7	36.70	10.05	
	ML	1200	1290	1360	1440	1580	1650	1710	1770	1830	1890						
	HL	1200	1290	1360	1440	1580	1650	1710	1770	1830	1890	1950	2010				

NOTE: The tyre size designation shall include immediately before the letter 'R', the letters 'S', 'E' or 'V' if appropriate

TABLE 1.0(T)

DELETED

TABLE 1 - TYRE LOAD RATINGS, TEST RIMS MINIMUM SIZE FACTORS AND SECTION WIDTHS

TABLE 1.0(U)

TYRE LOAD RATINGS, TEST RIMS, MINIMUM SIZE FACTORS, AND SECTION WIDTH FOR "60 SERIES" CANTILEVERED TYRES

Tyre size designation	Load range	Maximum tyre loads (pounds) at various cold inflation pressures (p.s.i.)													Test rim width (ins)	Min. size factor (ina)	Section width (inch)
		16	18	20	22	24	26	28	30	32	34	36	38	40			
.6600-15	NL	840	890	950	1000	1050	1100	1140	1190	1230					4	31.92	7.3
	ML	840	890	950	1000	1050	1100	1140	1190	1230	1270	1320					
	HL	840	890	950	1000	1050	1100	1140	1190	1230	1270	1320	1360	1400			

NOTE:
The '-' in the tyre size designation represents a performance rating. Tyre size designation shall include the letters S, H or V in place of the '-' if appropriate.

* Amended July 1983

TABLE 1 - TYRE LOAD RATINGS, TEST RIMS MINIMUM SIZE FACTORS AND SECTION WIDTHS

TABLE 1.0 (V)

TYRE LOAD RATINGS, TEST RIMS, MINIMUM SIZE FACTORS, AND SECTION WIDTHS FOR SERIES "50" BIAS PLY TYRES

Tyre size designation	Load range	Maximum tyre loads (pounds) at various cold inflation pressures (p.s.i.)												Test rim width (inches)	Minimum size factor (inches)	Section width (inches)	
		16	18	20	22	24	26	28	30	32	34	36	38				40
B50-13	NL	780	840	890	930	980	1030	1070	1110	1150					6½	30.84	9.15
	ML	780	840	890	930	980	1030	1070	1110	1150	1190	1230					
	HL	780	840	890	930	980	1030	1070	1110	1150	1190	1230	1270	1300			
F50-14	NL	1020	1090	1160	1220	1280	1310	1400	1450	1500					7	34.10	10.20
	ML	1020	1090	1160	1220	1280	1310	1400	1450	1500	1550	1610					
	HL	1020	1090	1160	1220	1280	1310	1400	1450	1500	1550	1610	1650	1700			
G50-14	NL	1100	1180	1250	1310	1380	1440	1500	1560	1620					8	35.29	10.95
	ML	1100	1180	1250	1310	1380	1440	1500	1560	1620	1680	1730					
	HL	1100	1180	1250	1310	1380	1440	1500	1560	1620	1680	1730	1780	1830			
H50-14	NL	1200	1290	1360	1440	1510	1580	1650	1710	1770					8	36.24	11.35
	ML	1200	1290	1360	1440	1510	1580	1650	1710	1770	1830	1890					
	HL	1200	1290	1360	1440	1510	1580	1650	1710	1770	1830	1890	1950	2010			
M50-14	NL	1420	1520	1610	1700	1780	1860	1940	2020	2090					9	38.51	55
	ML	1420	1520	1610	1700	1780	1860	1940	2020	2090	2160	2230					
	HL	1420	1520	1610	1700	1780	1860	1940	2020	2090	2160	2230	2300	2370			
N50-14	NL	1500	1600	1700	1790	1880	1970	2050	2130	2210					9	39.17	12.85
	ML	1500	1600	1700	1790	1880	1970	2050	2130	2210	2280	2360					
	HL	1500	1600	1700	1790	1880	1970	2050	2130	2210	2280	2360	2430	2500			
E50-15	NL	950	1010	1070	1130	1190	1240	1300	1350	1400					6½	33.74	9.50
	ML	950	1010	1070	1130	1190	1240	1300	1350	1400	1440	1490					
	HL	950	1010	1070	1130	1190	1240	1300	1350	1400	1440	1490	1540	1580			
G50-15	NL	1100	1180	1250	1310	1380	1440	1500	1560	1620					7	35.38	10.35
	ML	1100	1180	1250	1310	1380	1440	1500	1560	1620	1680	1730					
	HL	1100	1180	1250	1310	1380	1440	1500	1560	1620	1680	1730	1780	1830			
H50-15	NL	1200	1290	1360	1440	1510	1580	1650	1710	1770					8	36.76	11.15
	ML	1200	1290	1360	1440	1510	1580	1650	1710	1770	1830	1890					
	HL	1200	1290	1360	1440	1510	1580	1650	1710	1770	1830	1890	1950	2010			
L50-15	NL	1340	1430	1520	1600	1680	1750	1830	1900	1970					8	37.94	11.65
	ML	1340	1430	1520	1600	1680	1750	1830	1900	1970	2040	2100					
	HL	1340	1430	1520	1600	1680	1750	1830	1900	1970	2040	2100	2170	2230			
N50-15	NL	1500	1600	1700	1790	1880	1970	2050	2130	2210					9	39.65	12.65
	ML	1500	1600	1700	1790	1880	1970	2050	2130	2210	2280	2360					
	HL	1500	1600	1700	1790	1880	1970	2050	2130	2210	2280	2360	2430	2500			

NOTE:

The '-' in the tyre size designation represents a performance rating. Tyre size designation shall include the letters L,S,H or V in place of the '-' if appropriate.

TABLE 1.0 (W)

TYRE LOAD RATINGS, TEST RIMS, MINIMUM SIZE FACTORS AND SECTION WIDTHS FOR '50 SERIES' RADIAL PLY TYRES

Tyre size designation	Load range	Maximum tyre loads (pounds) at various cold inflation pressures (p.s.i.)												Test rim width (inches)	Minimum size factor (inches)	Section width (inches)	
		16	18	20	22	24	26	28	30	32	34	36	38				40
BR50-13	NL	780	840	890	930	980	1030	1070	1110	1150					6½	30.34	9.15
	ML	780	840	890	930	980	1030	1070	1110	1150	1190	1230					
	HL	780	840	890	930	980	1030	1070	1110	1150	1190	1230	1270	1300			
GR50-14	NL	1100	1180	1250	1310	1380	1440	1500	1560	1620					8	35.29	10.95
	ML	1100	1180	1250	1310	1380	1440	1500	1560	1620	1680	1730					
	HL	1100	1180	1250	1310	1380	1440	1500	1560	1620	1680	1730	1780	1830			
CR50-15	NL	1100	1180	1250	1310	1380	1440	1500	1560	1620					7	35.38	10.35
	ML	1100	1180	1250	1310	1380	1440	1500	1560	1620	1680	1730					
	HL	1100	1180	1250	1310	1380	1440	1500	1560	1620	1680	1730	1780	1830			
FR50-15	NL	1200	1290	1360	1440	1510	1580	1650	1710	1770					8	36.76	11.15
	ML	1200	1290	1360	1440	1510	1580	1650	1710	1770	1830	1890					
	HL	1200	1290	1360	1440	1510	1580	1650	1710	1770	1830	1890	1950	2010			
LR50-15	NL	1340	1430	1520	1600	1680	1750	1830	1900	1970					8	37.94	11.65
	ML	1340	1430	1520	1600	1680	1750	1830	1900	1970	2040	2100					
	HL	1340	1430	1520	1600	1680	1750	1830	1900	1970	2040	2100	2170	2230			

NOTE:

- The '-' in the tyre size designation represents a performance rating. Tyre size designation shall include the letters L,S,R or V in the place of the '-' if appropriate.

TABLE 1.0(X)

TYRE LOAD RATING TEST RIMS, MINIMUM SIZE FACTORS AND SECTION WIDTHS FOR '50 SERIES' RADIAL PLY TYRES

Tyre size designation	Load range	Maximum tyre loads (pounds) at various cold inflation pressures (p.s.i.)												Test rim width (inches)	Minimum size factor (inches)	Section width (inches)	
		16	18	20	22	24	26	28	30	32	34	36	38				40
175/50R13	NL	500	535	565	595	625	655	680	710	735					5½	26.67	7.13
	ML	500	535	565	595	625	655	680	710	735	760	785					
	HL	500	535	565	595	625	655	680	710	735	760	785	810	835			
195/50R15	NL	650	690	730	770	810	850	890	920	955					6	30.16	7.91
	ML	650	690	730	770	810	850	890	920	955	990	1020					
	HL	650	690	730	770	810	850	890	920	955	990	1020	1050	1080			
205/50R15	NL	720	770	810	860	900	940	980	1020	1060					6	30.82	8.19
	ML	720	770	810	860	900	940	980	1020	1060	1090	1130					
	HL	720	770	810	860	900	940	980	1020	1060	1090	1130	1160	1200			
225/50R15	NL	840	890	950	1000	1050	1100	1140	1190	1230					6½	32.37	8.98
	ML	840	890	950	1000	1050	1100	1140	1190	1230	1270	1320					
	HL	840	890	950	1000	1050	1100	1140	1190	1230	1270	1320	1360	1400			
285/50R15	NL	1260	1350	1430	1500	1580	1650	1720	1790	1860					8	36.84	11.26
	ML	1260	1350	1430	1500	1580	1650	1720	1790	1860	1920	1980					
	HL	1260	1350	1430	1500	1580	1650	1720	1790	1860	1920	1980	2040	2100			
225/50R16	NL	880	940	1000	1060	1110	1160	1210	1255	1300					6½	33.34	8.98
	ML	880	940	1000	1060	1110	1160	1210	1255	1300	1345	1390					
	HL	880	940	1000	1060	1110	1160	1210	1255	1300	1345	1390	1435	1475			
265/50R16	NL	1160	1235	1310	1385	1450	1520	1580	1645	1709					8	36.55	10.71
	ML	1160	1235	1310	1385	1450	1520	1580	1645	1709	1765	1820					
	HL	1160	1235	1310	1385	1450	1520	1580	1645	1709	1765	1820	1875	1930			

NOTE: The '-' in the tyre size designation represents a performance rating. Tyre size designation shall include the letters L,S,R or V in place of the '-' if appropriate.

*Amended February 1981

TABLE 1.0(Y)

TYRE LOAD RATINGS, TEST RIMS, MINIMUM SIZE FACTORS, AND SECTION WIDTHS FOR BIAS PLY TYRES-ADDITIONAL SIZES

Tyre size designation	Load range	Maximum tyre loads (pounds) at various cold inflation pressures (p.s.i.)												Test rim width (ins)	Min. size factor (ins)	Section width (inches)	
		16	18	20	22	24	26	28	30	32	34	36	38				40
165-380/6.5-15	NL	750	800	850	900	950	990	1030	1070	1110					4½	31.40	6.27
	ML	750	800	850	900	950	990	1030	1070	1110	1150	1190					

NOTES++

1. The '-' in the tyre size designation represents a performance rating. Tyre size designation shall include the letters L, S, H or V in place of the '-' if appropriate.
2. If the tyre is of belted bias or bias belted construction, the tyre size designation shall include the letter B situated: (i) in the case of tyre size designations commencing with a number, adjacent to and following the performance rating symbol; (ii) in the case of tyre size designations commencing with a letter of the alphabet adjacent to and following that letter.

TABLE 1.0(Z)

TYRE LOAD RATING, TEST RIMS MINIMUM SIZE FACTORS AND SECTION WIDTHS FOR '55 SERIES' RADIAL PLY TYRES

Tyre size designation	Load range	Maximum tyre loads (pounds) at various cold inflation pressures (p.s.i.)												Test rim width (ins)	Min. size factor (ins)	Section width (inches)	
		16	18	20	22	24	26	28	30	32	34	36	38				40
195/55R13	NL	635	675	715	755	795	830	865	900	930					6	28.85	7.91
	ML	635	675	715	755	795	830	865	900	930	965	995					
	HL	635	675	715	755	795	830	865	900	930	965	995	1025 1055				
225/55R13	NL	830	890	940	980	1030	1080	1120	1160	1200					6	30.98	3.78
	ML	830	890	940	980	1030	1080	1120	1160	1200	1240	1280					
	HL	830	890	940	980	1030	1080	1120	1160	1200	1240	1280	1320 1350				
205/55R14	NL	720	770	810	860	900	940	980	1020	1060					6	30.59	8.19
	ML	720	770	810	860	900	940	980	1020	1060	1090	1130					
	HL	720	770	810	860	900	940	980	1020	1060	1090	1130	1160 1200				
225/55R14	NL	845	905	960	1015	1070	1120	1170	1220	1265					6½	32.19	8.98
	ML	845	905	960	1015	1070	1120	1170	1220	1265	1310	1355					
	HL	845	905	960	1015	1070	1120	1170	1220	1265	1310	1355	1400 1440				
195/55R15	NL	685	730	775	815	855	895	935	970	1005					6	30.85	7.91
	ML	685	730	775	815	855	895	935	970	1005	1040	1075					
	HL	685	730	775	815	855	895	935	970	1005	1040	1075	1110 1140				
235/55R15	NL	970	1035	1100	1160	1215	1270	1325	1375	1430					7	34.02	9.45
	ML	970	1035	1100	1160	1215	1270	1325	1375	1430	1475	1525					
	HL	970	1035	1100	1160	1215	1270	1325	1375	1430	1475	1525	1570 1615				
275/55R15	NL	1260	1350	1430	1500	1580	1650	1720	1790	1860					8	37.19	10.98
	ML	1260	1350	1430	1500	1580	1650	1720	1790	1860	1920	1980					
	HL	1260	1350	1430	1500	1580	1650	1720	1790	1860	1920	1980	2040 2100				
205/55R16	NL	780	840	890	930	980	1030	1070	1110	1150					6	32.57	8.19
	ML	780	840	890	930	980	1030	1070	1110	1150	1190	1230					
	HL	780	840	890	930	980	1030	1070	1110	1150	1190	1230	1270 1300				

NOTE: The tyre size designation shall include immediately before the letter 'R', the letters 'S', 'E' or 'V' if appropriate

TABLE 1 - TYRE LOAD RATINGS, TEST RIMS MINIMUM SIZE FACTORS AND SECTION WIDTHS

TABLE 1.0(AA)

ADR 23

TYRE LOAD RATING TEST RIMS MINIMUM SIZE FACTORS AND SECTION WIDTHS
FOR '35 SERIES' RADIAL PLY TYRES

Tyre size designation	Load range	Maximum tyre loads (pounds) at various cold inflation pressures (p.s.i.)												Test rim width (inches)	Minimum size factor (inches)	Section width (inches)	
		16	18	20	22	24	26	28	30	32	34	36	38				40
345/35R15	NL	960	1030	1090	1150	1210	1270	1320	1370	1420					114	37.42	13.58
	ML	960	1030	1090	1150	1210	1270	1320	1370	1420	1470	1520					
	HL	960	1030	1090	1150	1210	1270	1320	1370	1420	1470	1520	1560	1610			

NOTE: The tyre size designation shall include before the letter R, the letters S, H or V if appropriate.

TABLE 1 - TYRE LOAD RATINGS, TEST RIMS MINIMUM SIZE FACTORS AND SECTION WIDTHS

TABLE 1.0(BB)

TYRE LOAD RATING TEST RIMS MINIMUM SIZE FACTORS AND SECTION WIDTHS
FOR '40 SERIES' RADIAL PLY TYRES

Tyre size designation	Load range	Maximum tyre loads (pounds) at various cold inflation pressures (p.s.i.)												Test rim width (inches)	Minimum size factor (inches)	Section width (inches)	
		16	18	20	22	24	26	28	30	32	34	36	38				40
205/40R13	NL	460	490	520	545	575	600	625	650	675					7	27.13	8.11
	ML	460	490	520	545	575	600	625	650	675	695	720					
	HL	460	490	520	545	575	600	625	650	675	695	720	740	765			
285/40R15	NL	890	950	1010	1070	1120	1170	1220	1270	1320					94	34.59	11.22
	ML	890	950	1010	1070	1120	1170	1220	1270	1320	1360	1410					
	HL	890	950	1010	1070	1120	1170	1220	1270	1320	1360	1410	1450	1490			

NOTE: The tyre size designation shall include before the letter R, the letters S, H or V if appropriate.

TABLE 1 - TYRE LOAD RATINGS, TEST RIMS MINIMUM SIZE FACTORS AND SECTION WIDTHS

TABLE 1.0(CC)

TYRE LOAD RATING TEST RIMS MINIMUM SIZE FACTORS
AND SECTION WIDTHS FOR '45 SERIES' RADIAL
PLY TYRES

Tyre size designation	Load range	Maximum tyre loads (pounds) at various cold inflation pressures (p.s.i.)												Test rim width (inches)	Minimum size factor (inches)	Section width (inches)	
		16	18	20	22	24	26	28	30	32	34	36	38				40
235/45R15	NL	780	840	890	930	980	1030	1070	1110	1150					8	32.11	9.29
	ML	780	840	890	930	980	1030	1070	1110	1150	1190	1230					
	HL		840	890	930	980	1030	1070	1110	1150	1190	1230	1270	1300			

NOTE: The tyre size designation shall include before the letter R, the letters S, H or V if appropriate

*Amended August 1982

TABLE 1 - TYRE LOAD RATINGS, TEST RIMS MINIMUM SIZE FACTORS AND SECTION WIDTHS

TABLE 1.0 (DD)

TYRE LOAD RATINGS TEST RIMS MINIMUM SIZE FACTORS AND SECTION WIDTHS FOR
MILIMETRIC '55 SERIES' RADIAL PLY TYRES (TR OR JM RIMS)

TYRE SIZE DESIGNATION	LOAD RANGE	MAXIMUM TYRE LOADS (POUNDS) AT VARIOUS COLD INFLATION PRESSURES (p.s.i.)												TEST RIM WIDTH (mm)	MINIMUM SIZE FACTOR (inches)	SECTION WIDTH (inches)	
		16	18	20	22	24	26	28	30	32	34	36	38				40
190/55R340	NL	650	695	735	775	810	850	885	920	950					150	28.89	7.75
	ML	650	695	735	775	810	850	885	920	950	985	1015					
	HL	650	695	735	775	810	850	885	920	950	985	1015	1045	1075			
190/55R365	NL	670	720	760	800	840	880	915	950	985					150	29.87	7.75
	ML	670	720	760	800	840	880	915	950	985	1020	1050					
	HL	670	720	760	800	840	880	915	950	985	1020	1050	1080	1110			
220/55R390	NL	915	975	1035	1090	1145	1200	1250	1295	1345					165	33.15	8.82
	ML	915	975	1035	1090	1145	1200	1250	1295	1345	1390	1435					
	HL	915	975	1035	1090	1145	1200	1250	1295	1345	1390	1435	1480	1520			
240/55R 390	NL	1055	1125	1195	1260	1320	1380	1440	1495	1550					180	34.80	9.64
	ML	1055	1125	1195	1260	1320	1380	1440	1495	1550	1600	1655					
	HL	1055	1125	1195	1260	1320	1380	1440	1495	1550	1600	1655	1705	1755			
240/55 R 415	NL	1095	1170	1240	1300	1370	1430	1490	1545	1600					180	35.78	9.64
	ML	1095	1170	1240	1300	1370	1430	1490	1545	1600	1655	1710					
	HL	1095	1170	1240	1300	1370	1430	1490	1545	1600	1655	1710	1760	1810			

NOTE: The tyre size designation shall include before the letter R, the letters S, H or V if appropriate.

TABLE 1 - TYRE LOAD RATINGS, TEST RIMS MINIMUM SIZE FACTORS AND SECTION WIDTHS

TABLE 1.0 (EE)

TYRE LOAD RATINGS TEST RIMS MINIMUM SIZE FACTORS AND SECTION WIDTHS FOR
MILLIMETRIC '60 SERIES' RADIAL PLY TYRES (TR OR JM RIMS)

TYRE SIZE DESIGNATION	LOAD RANGE	MAXIMUM TYRE LOADS (POUNDS) AT VARIOUS COLD INFLATION PRESSURES (p.s.i.)												TEST RIM WIDTH (mm)	MINIMUM SIZE FACTOR (inches)	SECTION WIDTH (inches)	
		16	18	20	22	24	26	28	30	32	34	36	38				40
200/60R390	NL	850	905	960	1010	1060	1105	1155	1200	1240					150	32.32	8.0
	ML	850	905	960	1010	1060	1105	1155	1200	1240	1285	1325					
	HL	850	905	960	1010	1060	1105	1155	1200	1240	1285	1325	1365	1405			

NOTE: The tyre size designation shall include before the letter R, the letters S, H or V if appropriate.

TABLE I - TYRE LOAD RATINGS, TEST RIMS, MINIMUM SIZE FACTORS AND SECTION WIDTHS

TABLE I.0 (CC)

TYRE LOAD RATINGS TEST RIMS MINIMUM SIZE FACTORS AND SECTION WIDTHS

MILLIMETRIC '65 SERIES' RADIAL PLY TYRES (TD or TP RIMS)

Tyre Size Designation	Load Range	Maximum tyre loads (pounds) at various cold inflation pressures (p.s.i.)													Test rim width (mm)	Minimum size factor (inches)	Section width (inches)
		16	18	20	22	24	26	28	30	32	34	36	38	40			
160/65R340	NL	565	600	685	670	705	735	765	795	825					120	27.60	6.45
	ML	565	600	635	670	705	735	765	795	825	855	880					
	HL	565	600	635	670	705	735	765	795	825	855	880	905 935				
170/65R340	NL	635	675	715	755	790	830	865	895	930				120	28.34	6.73	
	ML	635	675	715	755	790	830	865	895	930	960	990					
	HL	635	675	715	755	790	830	865	895	930	960	990	1020 1050				
180/65R340	NL	670	720	760	800	840	880	915	950	985				135	29.34	7.24	
	ML	670	720	760	800	840	880	915	950	985	1020	1050					
	HL	670	720	760	800	840	880	915	950	985	1020	1050	1080 1110				
200/65R340	NL	790	845	895	940	990	1035	1075	1120	1160				150	31.10	8.03	
	ML	790	845	895	940	990	1035	1075	1120	1160	1200	1235					
	HL	790	845	895	940	990	1035	1075	1120	1160	1200	1235	1270 1310				
170/65R365	NL	600	640	675	715	750	780	815	845	875				120	28.58	6.45	
	ML	600	640	675	715	750	780	815	845	875	905	935					
	HL	600	640	675	715	750	780	815	845	875	905	935	965 990				
170/65R365	NL	670	720	760	800	840	880	915	950	985				120	29.33	6.73	
	ML	670	720	760	800	840	880	915	950	985	1020	1050					
	HL	670	720	760	800	840	880	915	950	985	1020	1050	1080 1110				
210/65R365	NL	890	950	1005	1060	1110	1160	1210	1260	1300				165	33.08	8.54	
	ML	890	950	1005	1060	1110	1160	1210	1260	1300	1345	1390					
	HL	890	950	1005	1060	1110	1160	1210	1260	1300	1345	1390	1430 1470				
180/65R390	NL	725	775	820	865	905	945	985	1025	1065				135	31.33	7.24	
	ML	725	775	820	865	905	945	985	1025	1065	1100	1135					
	HL	725	775	820	865	905	945	985	1025	1065	1100	1135	1170 1205				
190/65R390	NL	815	870	925	975	1020	1070	1115	1155	1200				150	32.36	7.75	
	ML	815	870	925	975	1020	1070	1115	1155	1200	1240	1280					
	HL	815	870	925	975	1020	1070	1115	1155	1200	1240	1280	1320 1355				
220/65R390	NL	1030	1100	1165	1230	1290	1345	1400	1455	1510				150	34.69	8.58	
	ML	1030	1100	1165	1230	1290	1345	1400	1455	1510	1560	1610					
	HL	1030	1100	1165	1230	1290	1345	1400	1455	1510	1560	1610	1660 1705				

NOTE: The tyre size designation shall include before the letter R, the letters, S, E or V if appropriate.

TABLE J - TYRE LOAD RATINGS, TEST RIMS MINIMUM SIZE FACTORS AND SECTION WIDTHS

TABLE J.0 (CC)

TYRE LOAD RATING TEST RIMS MINIMUM SIZE FACTORS AND SECTION WIDTHS FOR

'80 SERIES' RADIAL PLY TYRES

Tyre Size Load Designation	Load Range	Maximum tyre loads (pounds) at various cold inflation pressures (p.s.i.)													Test rim width (inches)	Minimum Size factor (inches)	Section width (inches)
		16	18	20	22	24	26	28	30	32	34	36	38	40			
215/80R16	NL	1290	1380	1460	1540	1620	1690	1770	1830	1900				6	37.36	8.50	
	ML	1290	1380	1460	1540	1620	1690	1770	1830	1900	1970	2030					
	HL	1290	1380	1460	1540	1620	1690	1770	1830	1900	1970	2030	2090 2150				

NOTE: The tyre size designation shall include before the letter R, the letters, S, E or V if appropriate.

TABLE 1.1 - TYRE LOAD RATING, TEST RIMS MINIMUM SIZE FACTORS AND SECTION WIDTHS

ADR 23

TABLE 1.1(A)
TYRE LOAD RATING, TEST RIMS, MINIMUM SIZE FACTORS, AND SECTION WIDTHS
FOR 'P' TYPE '50 SERIES' RADIAL PLY TYRES

Tyre Size Designation	Load Range	Maximum tyre loads (kilogrammes) at various cold inflation pressures (kPa)									Test rim Width (Inches)	Minimum Size Factor (mm)	Section Width (mm)
		120	140	160	180	200	220	240	260	280			
F215/50R15	SL EL	350 350	380 380	405 405	430 430	450 450	475 475	495 495	515	535	6	749	216
F235/50R15	SL EL	405 405	440 440	470 470	500 500	525 525	550 550	575 575	600	620	6½	787	235
F245/50R14	SL EL	460 460	495 495	530 530	565 565	595 595	625 625	650 650	675	705	7	835	246
F265/50R14	SL EL	525 525	570 570	610 610	645 645	680 680	715 715	745 745	775	805	7	868	262
P245/50R15	SL EL	480 480	520 520	555 555	590 590	620 620	655 655	680 680	710	735	7	860	248
F265/50R15	SL EL	550 550	595 595	635 635	675 675	710 710	745 745	780 780	810	840	7	893	262
F275/50R15	SL EL	585 585	635 635	680 680	720 720	760 760	795 795	830 830	865	895	8	921	279
F285/50R15	SL EL	625 625	675 675	720 720	765 765	805 805	845 845	885 885	920	955	8	936	286
P295/50R15	SL EL	660 660	715 715	765 765	810 810	855 855	895 895	935 935	975	1010	8	953	294
F305/50R15	SL EL	700 700	760 760	810 810	860 860	905 905	950 950	995 995	1035	1070	8	970	301

* AMENDED FEBRUARY 1984

TABLE 1.1 - TYRE LOAD RATING, TEST RIMS MINIMUM SIZE FACTORS AND SECTION WIDTHS

ADR23

TABLE 1.1(B)

Tyre Load Rating, Test Rims, Minimum Size Factors, and Section Widths
For 'P' Tyre '60 Series' Radial Ply Tyres

Tyre Size Designation	Load Range	Maximum tyre loads (kilogrammes) at various cold inflation pressures (kPa)									Test Rim Width (inches)	Minimum Size Factor (mm)	Section Width (mm)
		120	140	160	180	200	220	240	260	280			
P175/60R13	SL	290	310	335	355	375	390	410			5	705	177
	EL	290	310	335	355	375	390	410	425	440			
P185/60R13	SL	315	340	365	390	410	430	450			5	724	184
	EL	315	340	365	390	410	430	450	465	485			
P195/60R13	SL	345	375	400	425	445	470	490			5½	747	196
	EL	345	375	400	425	445	470	490	510	530			
P205/60R13	SL	375	405	435	460	485	510	535			5½	766	203
	EL	375	405	435	460	485	510	535	555	575			
P215/60R13	SL	410	440	470	500	530	555	580			6	790	216
	EL	410	440	470	500	530	555	580	600	625			
P225/60R13	SL	440	480	510	540	570	600	625			6	808	223
	EL	440	480	510	540	570	600	625	680	675			
P185/60R14	SL	335	360	385	410	430	455	475			5	750	184
	EL	335	360	385	410	430	455	475	490	510			
P195/60R14	SL	365	395	420	445	470	495	515			5½	773	196
	EL	365	395	420	445	470	495	515	540	560			
P205/60R14	SL	395	430	460	485	515	540	560			5½	792	203
	EL	395	430	460	485	515	540	560	585	605			
P215/60R14	SL	430	465	495	530	555	585	610			6	816	216
	EL	430	465	495	530	555	585	610	635	660			
P225/60R14	SL	465	505	535	570	600	630	660			6	834	223
	EL	465	505	535	570	600	630	660	685	710			
P235/60R14	SL	500	540	580	615	645	680	710			6½	857	235
	EL	500	540	580	615	645	680	710	740	765			
P245/60R14	SL	540	580	620	660	695	730	760			7	882	248
	EL	540	580	620	660	695	730	760	795	825			
P185/60R15	SL	350	380	405	430	455	475	495			5	775	184
	EL	350	380	405	430	455	475	495	515	535			
P195/60R15	SL	385	415	445	470	495	520	540			5½	798	196
	EL	385	415	445	470	495	520	540	565	585			
P205/60R15	SL	415	450	480	510	540	565	590			5½	817	203
	EL	415	450	480	510	540	565	590	615	635			
P215/60R15	SL	450	490	520	555	585	610	640			6	841	216
	EL	450	490	520	555	585	610	640	665	690			
P225/60R15	SL	490	525	565	595	630	660	690			6	859	223
	EL	490	525	565	595	630	660	690	720	745			
P235/60R15	SL	525	565	605	645	680	710	745			6½	882	235
	EL	525	565	605	645	680	710	745	775	800			
P245/60R15	SL	565	610	650	690	730	765	795			7	907	248
	EL	565	610	650	690	730	765	795	830	860			
P255/60R15	SL	605	650	695	740	780	820	855			7	925	255
	EL	605	650	695	740	780	820	855	890	925			
P265/60R15	SL	645	695	745	790	835	875	915			7	943	262
	EL	645	695	745	790	835	875	915	950	985			

NOTE: The tyre size designation shall include immediately before the letters 'R', the letters 'S, E' or 'V' if appropriate
 * Amended August 1982

TABLE 1.1(C)

TYRE LOAD RATING, TEST RIMS, MINIMUM SIZE FACTORS, AND SECTION WIDTHS
FOR 'P' TYPE '65 SERIES' RADIAL PLY TYRES

Tyre Size Designation	Load Range	Maximum Tyre Loads (Kilogrammes) at Various Cold Inflation pressure (kPa)									Test rim Width (inches)	Minimum Size Factor (mm)	Section Width (mm)
		120	140	160	180	200	220	240	260	280			
P175/65R13	SL	310	335	360	380	400	420	440			5	723	177
	EL	310	335	360	380	400	420	440	455	475			
P185/65R13	SL	340	370	395	415	440	460	480			5	741	184
	EL	340	370	395	415	440	460	480	500	520			
P195/65R13	SL	375	400	430	455	480	505	525			5½	767	196
	EL	375	400	430	455	480	505	525	550	570			
P205/65R13	SL	405	435	465	495	520	545	570			5½	785	203
	EL	405	435	465	495	520	545	570	595	615			
P175/65R14	SL	330	355	380	400	425	445	465			5	749	77
	EL	330	355	380	400	425	445	465	480	500			
P185/65R14	SL	360	390	415	440	465	485	510			5	767	184
	EL	360	390	415	440	465	485	510	530	550			
P195/65R14	SL	395	425	455	480	505	530	555			5½	792	196
	EL	395	425	455	480	505	530	555	580	600			
P205/65R14	SL	425	460	495	525	550	580	605			5½	811	203
	EL	425	460	495	525	550	580	605	630	655			
P215/65R14	SL	465	500	535	570	600	630	655			6	837	216
	EL	465	500	535	570	600	630	655	680	710			
P225/65R14	SL	500	540	580	615	645	680	710			6	855	223
	EL	500	540	580	615	645	680	710	740	765			
P175/65R15	SL	345	370	400	420	445	465	485			5	774	177
	EL	345	370	400	420	445	465	485	505	525			
P185/65R15	SL	380	410	435	460	485	510	535			5	792	184
	EL	380	410	435	460	485	510	535	555	575			
P195/65R15	SL	410	445	475	505	530	560	585			5½	818	196
	EL	410	445	475	505	530	560	585	605	630			
P205/65R15	SL	450	485	520	550	580	605	635			5½	836	203
	EL	450	485	520	550	580	605	635	660	685			
P215/65R15	SL	485	525	560	595	625	660	685			6	862	216
	EL	485	525	560	595	625	660	685	715	740			
P225/65R15	SL	525	565	605	645	675	710	740			6	881	223
	EL	525	565	605	645	675	710	740	770	800			

NOTE: The tyre size designation shall include immediately before the letter 'R', the letters 'S, H' or 'V' if appropriate

* Amended August 1982

TABLE 1.1 - TYRE LOAD RATING, TEST RIMS MINIMUM SIZE FACTORS AND SECTION WIDTHS

TABLE 1.1(0)

Tyre Load Rating, Test Rims, Minimum Size Factors, and Section Widths
For "P" Type "70 Series" Radial Ply Tyres

ADR 23

Tyre Size Designation	Load Range	Maximum tyre loads (kilogrammes) at various cold inflation pressures (kPa)									Test rim Width (inches)	Minimum Size Factor (mm)	Section Width (mm)
		120	140	160	180	200	220	240	260	280			
P175/70R12	SL	315	340	365	385	405	425	445			5	714	177
	EL	315	340	365	385	405	425	445	465	480			
P185/70R12	SL	345	375	400	425	445	470	490			5	735	184
	EL	345	375	400	425	445	470	490	510	530			
P195/70R12	SL	375	405	435	460	485	510	530			5½	761	196
	EL	375	405	435	460	485	510	530	550	570			
P165/70R13	SL	300	325	350	370	390	410	425			4½	715	165
	EL	300	325	350	370	390	410	425	445	460			
P175/70R13	SL	335	360	385	405	430	450	470			5	740	177
	EL	335	360	385	405	430	450	470	490	510			
P185/70R13	SL	365	395	420	450	470	495	515			5	761	184
	EL	365	395	420	450	470	495	515	540	560			
P195/70R13	SL	400	430	460	490	515	540	565			5½	786	196
	EL	400	430	460	490	515	540	565	590	610			
P205/70R13	SL	435	470	505	535	560	590	615			5½	806	203
	EL	435	470	505	535	560	590	615	640	665			
P175/70R14	SL	350	380	405	430	455	475	495			5	766	177
	EL	350	380	405	430	455	475	495	515	535			
P185/70R14	SL	385	415	445	470	495	520	545			5	787	184
	EL	385	415	445	470	495	520	545	565	590			
P195/70R14	SL	420	455	485	515	545	570	595			5½	812	196
	EL	420	455	485	515	545	570	595	620	645			
P205/70R14	SL	460	495	530	560	590	620	650			5½	832	203
	EL	460	495	530	560	590	620	650	675	700			
P215/70R14	SL	500	535	575	610	640	675	705			6	858	216
	EL	500	535	575	610	640	675	705	730	760			
P225/70R14	SL	540	580	620	660	695	730	760			6	879	223
	EL	540	580	620	660	695	730	760	790	820			
P235/70R14	SL	580	625	670	710	750	785	820			6½	904	235
	EL	580	625	670	710	750	785	820	855	885			
P245/70R14	SL	625	675	720	765	805	845	880			7	930	248
	EL	625	675	720	765	805	845	880	920	955			
P175/70R15	SL	370	400	425	450	475	500	520			5	791	177
	EL	370	400	425	450	475	500	520	545	565			
P105/70R15	SL	405	435	465	495	520	550	570			5	812	184
	EL	405	435	465	495	520	550	570	595	620			
P195/70R15	SL	440	475	510	540	570	600	625			5½	837	196
	EL	440	475	510	540	570	600	625	650	675			
P205/70R15	SL	480	520	555	590	620	650	680			5½	857	203
	EL	480	520	555	590	620	650	680	705	735			

NOTE - Tyre size designation shall include immediately before the letter R, the letters S, H or V if appropriate.

Amended July 1981

TABLE 1.1(E)

Tyre Load Rating, Test Rims, Minimum Size Factors, and Section Widths
For "P" Type '75 Series' Radial Ply Tyres

Tyre Size Designation	Load Range	Maximum tyre loads (kilogrammes) at various cold inflation pressures (kPa)										Test rim Width (inches)	Minimum Size Factor (mm)	Section Width (mm)
		120	140	160	180	200	220	240	260	280				
P155/75 R12	SL	275	295	315	335	355	370	390				4½	682	157
	EL	275	295	315	335	355	370	390	405	420				
P165/75 R12	SL	305	330	350	375	395	415	430				4½	706	165
	EL	305	330	350	375	395	415	430	450	465				
P145/75 R13	SL	260	280	300	320	335	350	365				4.00	682	145
	EL	260	280	300	320	335	350	365	380	395				
P155/75 R13	SL	290	315	335	355	375	395	410				4.5	707	157
	EL	290	315	335	355	375	395	410	425	445				
P165/75 R13	SL	320	350	370	395	415	435	455				4½	731	165
	EL	320	350	370	395	415	435	455	475	490				
P175/75 R13	SL	355	385	410	435	460	480	505				5	756	177
	EL	355	385	410	435	460	480	505	525	545				
P185/75 R13	SL	390	420	450	480	505	550	555				5	778	184
	EL	390	420	450	480	505	550	555	575	595				
P175/75 R14	SL	375	405	435	460	485	510	530				5	782	177
	EL	375	405	435	460	485	510	530	550	573				
P185/75 R14	SL	410	445	475	505	530	560	585				5	804	184
	EL	410	445	475	505	530	560	585	605	630				
P195/75 R14	SL	450	485	520	550	580	610	635				5½	829	196
	EL	450	485	520	550	580	610	635	665	690				
P205/75 R14	SL	490	530	565	600	635	665	695				5½	852	203
	EL	490	530	565	600	635	665	695	720	750				
P215/75 R14	SL	535	575	615	650	690	720	755				6	878	216
	EL	535	575	615	650	690	720	755	785	815				
P175/75 R15	SL	395	425	455	480	510	535	555				5	807	177
	EL	395	425	455	480	510	535	555	580	600				
P185/75 R15	SL	430	465	500	530	560	585	610				5	829	184
	EL	430	465	500	530	560	585	610	635	660				
P195/75 R15	SL	470	510	545	580	610	640	670				5½	854	196
	EL	470	510	545	580	610	640	670	695	720				
P205/75 R15	SL	515	555	595	630	665	695	725				5½	877	203
	EL	515	555	595	630	665	695	725	755	785				
P215/75 R15	SL	555	600	645	685	720	755	790				6	903	216
	EL	555	600	645	685	720	755	790	820	850				
P225/75 R15	SL	605	650	695	740	780	815	850				6	925	223
	EL	605	650	695	740	780	815	850	885	920				
P235/75 R15	SL	650	700	750	795	840	880	920				6½	950	235
	EL	650	700	750	795	840	880	920	955	990				
P245/75 R15	SL	700	755	810	860	905	950	990				7	979	248
	EL	700	755	810	860	905	950	990	1030	1070				

NOTE: The tyre size designation shall include immediately before the letter 'R', the letters 'S, E' or 'V' if appropriate

* Amended August 1982

TABLE 1.1 - TYRE LOAD RATING, TEST RIMS MINIMUM SIZE FACTORS AND SECTION WIDTHS
TABLE 1.1(F)

Tyre Load Rating, Test Rims, Minimum Size Factors, and Section Widths
For "P" Type "80 Series" Radial Ply Tyres

ADR 23

Tyre Size Designation	Load Range	Maximum tyre loads (kilogrammes) at various cold inflation pressures (kPa)									Test rim Width (inches)	Minimum Size Factor (mm)	Section Width (mm)
		120	140	160	180	200	220	240	260	280			
P155/80R12	SL	290	315	340	360	380	395	415			4½	698	157
	EL	290	315	340	360	380	395	415	430	445			
P165/80R12	SL	325	350	375	400	420	440	460			4½	721	165
	EL	325	350	375	400	420	440	460	480	495			
P155/80R13	SL	310	335	355	380	400	420	435			4½	723	157
	EL	310	335	355	380	400	420	435	455	470			
P165/80R13	SL	345	370	395	420	445	465	485			4½	746	165
	EL	345	370	395	420	445	465	485	505	525			
P175/80R13	SL	380	410	440	465	490	515	535			5	773	177
	EL	380	410	440	465	490	515	535	560	580			
P185/80R13	SL	415	450	480	510	540	565	595			5	796	184
	EL	415	450	480	510	540	565	595	615	640			
P135/80R14	SL	260	280	300	320	335	350	365			3½	695	133
	EL	260	280	300	320	335	350	365	380	395			
P145/80R14	SL	290	315	335	360	375	395	415			4	722	145
	EL	290	315	335	360	375	395	415	430	445			
P155/80R14	SL	325	355	375	400	420	440	460			4½	749	157
	EL	325	355	375	400	420	440	460	480	500			
P165/80R14	SL	360	390	420	445	470	490	510			4½	772	165
	EL	360	390	420	445	470	490	510	535	555			
P175/80R14	SL	400	430	460	490	515	540	565			5	799	177
	EL	400	430	460	490	515	540	565	590	610			
P185/80R14	SL	440	475	510	540	565	595	620			5	822	184
	EL	440	475	510	540	565	595	620	645	670			
P195/80R14	SL	480	520	555	590	620	650	680			5½	849	196
	EL	480	520	555	590	620	650	680	710	735			
P205/80R14	SL	525	565	605	640	675	710	740			5½	871	203
	EL	525	565	605	640	675	710	740	770	800			
P215/80R14	SL	570	615	655	695	735	770	805			6	899	216
	EL	570	615	655	695	735	770	805	835	870			
P135/80R15	SL	275	295	315	335	355	370	385			3½	720	133
	EL	275	295	315	335	355	370	385	405	420			
P145/80R15	SL	305	330	355	375	395	415	435			4	747	145
	EL	305	330	355	375	395	415	435	450	470			
P155/80R15	SL	345	370	395	420	445	465	485			4½	774	157
	EL	345	370	395	420	445	465	485	505	525			
P165/80R15	SL	380	410	440	465	490	515	540			4½	797	165
	EL	380	410	440	465	490	515	540	560	580			
P175/80R15	SL	420	455	485	515	540	570	595			5	824	177
	EL	420	455	485	515	540	570	595	620	640			
P185/80R15	SL	460	500	530	565	595	625	650			5	847	184
	EL	460	500	530	565	595	625	650	680	705			

NOTE:- Tyre size designation shall include immediately before the letter R, the letters S, H, or V if appropriate.

*Amended February 1981 / Corrected December 1983

TABLE 1.1 - TYRE LOAD RATING, TEST RIMS, MINIMUM SIZE FACTORS AND SECTION WIDTHS

TABLE 1.1(G)

TYRE LOAD RATING TEST RIMS MINIMUM SIZE FACTORS AND SECTION WIDTHS
FOR MILLIMETRIC '60 SERIES' RADIAL PLY TYRES

Tyre size designation	Load range	Maximum tyre loads (kg) at various cold inflation pressures (kPa)									Test Rim Width (ins)	Minimum Size Factor (mm)	Section Width (mm)
		120	140	160	180	200	220	240	260	280			
175/60R13	SL	245	270	295	325	350	375	400			5	705	177
195/60R13	SL	300	330	360	395	425	455	487			5.5	747	196 *
205/60R13	SL	315	350	380	415	450	480	515			5.5	766	203
215/60R13	SL	345	380	415	450	490	525	560			6	790	216
225/60R13	SL	355	395	430	470	505	545	580			6	808	223
235/60R13	SL	385	425	465	510	550	590	630			6.5	831	235
185/60R14	SL	290	320	350	385	415	445	475			5	750	184
195/60R14	SL	315	350	380	415	450	480	515			5.5	773	196
215/60R14	SL	355	395	430	470	505	545	580			6	816	216
225/60R14	SL	375	415	455	495	535	575	615			6	834	223
195/60R15	SL	325	360	395	425	460	495	530			5.5	798	196
205/60R15	SL	355	395	430	470	505	545	580			5.5	817	203

NOTE: The tyre size designation shall include before the letter R, the letters S, H or V if appropriate.

TABLE 1.1 - LOAD RATING, TEST RIMS, MINIMUM SIZE FACTORS AND SECTION WIDTHS

TABLE 1.1(H)

TYRE LOAD RATING, TEST RIMS, MINIMUM SIZE FACTORS AND SECTION WIDTHS
FOR MILLIMETRIC '65 SERIES' RADIAL PLY TYRES

Tyre Size Designation	Load Range	Maximum tyre loads (kg) at various cold inflation pressures (kPa)									Test Rim Width (ins)	Minimum Size Factor (mm)	Section Width (mm)
		120	140	160	180	200	220	240	260	280			
155/65R13	SL	225	245	270	295	320	340	365			4.5	678	157
165/65R13	SL	245	270	295	320	350	375	400			4.5	698	165
175/65R13	SL	275	305	335	360	390	420	450			5	723	177
185/65R13	SL	305	340	370	405	435	470	500			5	741	184
155/65R14	SL	230	255	280	300	325	350	375			4.5	703	157
165/65R14	SL	260	290	315	340	370	395	425			4.5	723	165
175/65R14	SL	290	320	350	385	415	445	475			5	749	177
185/65R14	SL	315	350	380	415	450	480	515			5	767	184
195/65R14	SL	345	380	415	450	490	525	560			5.5	793	196
205/65R14	SL	370	405	445	485	525	560	600			5.5	811	203
185/65R15	SL	335	370	405	440	475	510	545			5	792	184
195/65R15	SL	355	395	430	470	505	545	580			5.5	818	196
205/65R15	SL	390	430	470	510	550	590	630			5.5	836	203

NOTE: The tyre size designation shall include immediately before the letter 'R', the letters 'S, H' or 'V' if appropriate.

* Amended July 1983 Ø Corrected December 1983

TABLE 2 - APPROVED RIMS

TABLE 2.0 Part A
APPROVED RIMS FOR TYRES

Tyre Size Designation	Approved Rims
4.40-10	3.00B; 3.00D; 3.50B; 3.50D; 3.5JJ
4.80-10	3.00B; 3.00D; 3.50B; 4JJ
5.20-10	3.5JJ; 3.50B; 3.50D; 4JJ; 4.5JJ
5.90-10	4JJ; 4.5JJ; 5JJ
4.80-12	3.5JJ; 3.00B; 3.00D; 3.50B; 4JJ
5.20-12	3.5JJ; 3.50D; 4JJ; 4.5JJ
5.60-12	4.00C; 4JJ; 4.00B; 4.5JJ; 4.00; 4.50C; 5JJ
5.90-12	4JJ; 4.5JJ; 5JJ
5.20-13	3.5JJ; 3.50D; 4JJ; 4.5JJ
5.60-13	4JJ; 4.5JJ; 5JJ
5.90-13	4JJ; 4.5JJ; 5JJ
6.20-13	4JJ; 4.5JJ; 5JJ
6.40-14	4.5JJ; 5JJ; 5.5JJ
6.90-13	5JJ; 5.5JJ; 6JJ
4.60-14	4.5JJ; 5JJ; 4.5K; 4.50E; 5K; 5.5JJ; 5.00E
5.20-15	3.50D; 3.5JJ; 4JJ; 4.00E; 4.5JJ; 4.5K
5.60-15	5K
6.70-15	4.5JJ; 4.5K; 5JJ; 5K; 4.50E; 5.5JJ; 6JJ;
	5.00P; 5.5K; 6L
7.60-15	4.5JJ; 5K; 5.5K; 6JJ; 4.5K; 6L; 5.00P; 5.50P;
8.20-15	5JJ; 5.5K; 5.5JJ; 6L; 6.5JJ; 5K; 5.50P; 6K
8.45-15	6JJ; 6L;
8.90-15	6JJ; 6K; 6L
8.90-15	6JJ; 6.5JJ; 6.5L; 7L
6.70-16	4.5K; 5K; 5.5JJ; 6JJ
5.00-12	3.50B; 3.5JJ; 3.50; 4JJ; 4.00; 4.00B; 4.00C
5.50-12	3.5JJ; 4JJ; 4.5JJ
6.00-12	4JJ; 4.5JJ; 5JJ
5.00-13	3.50D; 3.5JJ; 4.5JJ; 4.5K
5.50-13	4JJ
5.00-13	4JJ; 4.5JJ; 5JJ; 4.00C; 4.50C; 4.5K
6.50-13	4.5JJ; 5JJ; 5.5JJ; 4.5K; 5K; 5.5K
7.00-13	5K; 6K; 4.5K; 5.5K; 4.5JJ; 5JJ; 5.5JJ; 6JJ
7.25-13	5JJ; 5.5JJ; 6JJ
7.50-13	5.5JJ; 5.5K; 5JJ; 5K; 6JJ; 6K
5.50-15L	4JJ; 3.5JJ; 4.5JJ; 4.5K
6.00-15L	4.5JJ; 4.5K; 4JJ; 5JJ
6.50-15L	4.5JJ; 4.5K; 5JJ; 5.5JJ
6.50-15L	4.5JJ; 4.5K;
7.00-15L	5JJ; 5K; 4.5JJ; 4.5K; 5.5JJ; 5.5K; 5.50P; 6JJ
5.0-15	3.5JJ; 3.50B; 3.50D; 4JJ; 4.00C
5.5-15	4JJ; 4.5JJ; 5JJ
6.00-14	4JJ; 4.5JJ; 5JJ; 4.00C; 4.50C
6.50-14	5.5K; 4.5JJ; 4.5K; 5JJ; 5K; 5.5JJ
7.00-14	4.5JJ; 5JJ; 5K; 5.5JJ; 5.5K; 6JJ
-14	5JJ; 5K; 5.5JJ; 5.5K; 6JJ; 6K; 6.5JJ
6-14	5JJ; 5K; 5.5JJ; 5.5K; 6JJ; 6K; 6.5JJ; 6.5K

Tyre Size Designation	Approved Rims
8.50-14	6JJ; 5.5JJ; 5.5K; 6K; 6L; 6.5JJ; 6.5K; 7JJ;
9.00-14	6.5K; 5.5JJ; 6JJ; 6K; 6.5JJ; 7JJ; 7L;
9.50-14	6.5K; 6JJ; 6K; 6.5JJ; 7JJ; 7L; 7.5L
6.00-15	4JJ; 4.5JJ; 4.5K; 5JJ;
6.50-15	4.5K; 4.5JJ; 5JJ; 5.5JJ; 5K
7.00-15	5.00P; 5K; 5.5K; 5.00E; 5.50P
8.00-15	6L; 5.5JJ; 5.5K; 6JJ; 6.5JJ; 6.5K; 6.5L; 7JJ
9.00-15	6JJ; 5.5JJ; 6.5JJ; 7JJ; 6.5K
8.15-15	5.5JJ; 6JJ; 6.5JJ; 7JJ; 5.5K; 6K; 6L
8.20-15	5.5JJ; 5.5K; 6.5JJ; 6.5K; 6.5L; 7JJ
8.45-15	5.5JJ; 5.5K; 6.5JJ; 6.5K; 7JJ;
8.55-15	6.5JJ;
8.90-15	7JJ; 8JJ
7.50-16	5.50P
7.60-16	5.5JJ; 6JJ
6.50-17	5.00P
6.00-16	4.00E; 4.50E
6.50-16	4.50E; 5.00E
7.00-16	5.50P; 5.00P; 5.00E
165-380 (6.5-15)	4JJ; 4.5JJ; 5JJ
5.95-10	3.5JJ; 4JJ; 4.5JJ; 5JJ; 3.50B
6.20-12	4JJ; 4.5JJ; 5JJ
6.15-13	4JJ; 4.5JJ; 5JJ
6.45-13	4.5JJ; 5JJ; 5.5JJ
6.95-13	4.5JJ; 5JJ; 5.5JJ; 6JJ
6.15-14	4JJ; 4.5JJ; 5JJ
6.45-14	4.5JJ; 4.5K; 5JJ; 5K; 5.5JJ
6.95-14	4.5JJ; 5JJ; 5K; 5.5JJ; 6JJ
7.35-14	5JJ; 5K; 5.5JJ; 5.5K; 6JJ; 6.5JJ
7.75-14	5JJ; 5K; 5.5JJ; 5.5K; 6JJ; 6K; 6.5JJ
8.25-14	5.5JJ; 5.5K; 6JJ; 6K; 6.5JJ; 7JJ; 6.5K
8.55-14	5.5JJ; 6JJ; 6K; 6.5JJ; 6.5K; 7JJ
8.85-14	6JJ; 6K; 6.5JJ; 7JJ
6.35-15	4JJ; 4.5JJ; 5JJ
6.85-15	4.5JJ; 4.5K; 5JJ; 5K; 5.5JJ; 6JJ; 5.5K
7.35-15	5JJ; 5K; 5.5JJ; 5.5K; 6JJ; 6.5JJ
7.75-15	5JJ; 5K; 5.5JJ; 5.5K; 6JJ; 6.5JJ
8.25-15	5.5JJ; 5.5K; 6JJ; 6K; 6L; 6.5JJ; 7JJ
8.55-15	5.5JJ; 5.5K; 6JJ; 6K; 6L; 6.5K; 7JJ
8.85-15	6JJ; 6K; 6L; 6.5JJ; 7JJ
9.15-15	6JJ; 6K; 6L; 6.5JJ; 7JJ
145 R 10	3.5JJ; 4JJ; 4.5JJ; 5JJ; 3.50; 3.50B; 4.00;
	4.00B; 4.00C; 4.50C; 3.50D; 5.00C
125 R 12	3.5JJ; 3.50B; 3.50D; 3.50; 4JJ; 4.00;
	4.00B; 4.00C
135 R 12	4JJ; 3.5JJ; 3.50; 3.50B; 3.50D; 4.00;
	4.00B; 4.00C; 4.5JJ; 4.50; 4.50B; 4.50C

NOTE: It is permissible to use existing J or JK rims where 'JJ' rims are specified in the above table.

** From Table 1.

*Amended February 1981

TABLE 2.0 PART A (CONTINUED)

APPROVED RIMS FOR TYRES

Tyre Size Designation	Approved Rims	Tyre Size Designation	Approved Rims
145 R 12	4JJ; 4JJJ; 5JJ; 4.00; 4.00B; 4.00C; 4.50; 4.50B; 4.50C	ER60-14	5JJ; 6JJ; 6JJJ; 7JJ;
155 R 12	4JJ; 4JJJ; 5JJ; 4.50; 4.00B; 4.00C; 4.50; 4.50B; 4.50C; 5.00C	CR60-14	6JJ; 6JJJ; 7JJ;
135 R 13	4JJ; 3JJJ; 3.50; 3.50B; 3.50C; 4.00; 4.00B; 4.00C; 4JJ; 4.50; 4.50B; 4.50C;	DR60-14	8JJ; 6JJJ; 7JJ; 8JJ;
145 R 13	4JJ; 4JJJ; 4.50B; 5JJ; 4.00; 4.00B; 4.00C; 4.50; 4.50C; 5.00; 5.00B	ER60-14	6JJ; 6JJJ; 7JJ; 8JJ;
155 R 13	4.50B; 4JJ; 4JJJ; 5JJ; 4.00C; 4.50; 4.50C; 5.00; 5.00B	FR60-14	6JJ; 7JJ; 8JJ; 9JJ;
165 R 13	4.50B; 4JJJ; 5JJ; 5JJJ; 4.50; 4.50B; 5.00; 5.00B; 5K; 5.50; 5.50B; 5K	GR60-14	6JJJ; 7JJ; 8JJ; 9JJ;
175 R 13	4JJJ; 5JJ; 5JJJ; 6JJ; 5K; 5K; 6K; 5.50B	HR60-14	7JJ; 8JJ; 9JJ;
185 R 13	5JJ; 5JJJ; 6JJ; 6JJJ; 5K; 5K; 6K; 6K	LR60-14	8JJ; 9JJ; 10JJ;
195 R 13	5JJ; 5JJJ; 6JJ; 6JJJ;	MR60-15	5JJ; 5JJJ; 6JJ;
135 R 14	4JJ; 4.00C; 3JJJ; 3.50; 3.50B; 3.50C; 4.00; 4.00B; 4JJJ	RH60-15	5JJ; 6JJ; 6JJJ; 7JJ;
145 R 14	4JJ; 4.00; 4.00B; 4.00C; 4JJ; 5JJ	CR60-15	5JJJ; 6JJ; 6JJJ; 7JJ;
155 R 14	4JJ; 4JJJ; 5JJ; 4.00C; 4.50C;	DR60-15	6JJ; 6JJJ; 7JJ;
165 R 14	4JJ; 5JJ; 5K; 5JJJ; 5K; 4K; 4JJ	ER60-15	6JJ; 6JJJ; 7JJ; 8JJ;
175 R 14	4JJ; 5JJ; 5K; 5JJJ; 6JJ; 5K; 6K; 4K	FR60-15	6JJJ; 7JJ; 8JJ;
185 R 14	5JJ; 5K; 5JJJ; 5K; 6JJ; 6K; 6JJJ; 6L; 6K	GR60-15	6JJJ; 7JJ; 8JJ;
195 R 14	5JJ; 5JJJ; 5K; 6JJ; 6K; 6JJJ; 5K; 6K	HR60-15	7JJ; 8JJ; 9JJ;
205 R 14	5JJJ; 5K; 6JJ; 6K; 6K; 6JJJ; 7JJ; 6L; 7K; 7L	JR60-15	7JJ; 8JJ; 9JJ;
215 R 14	5JJJ; 5K; 6JJ; 6K; 6K; 6JJJ; 7JJ; 6L; 6L; 7K; 7L; 7K; 7L	LR60-15	7JJ; 8JJ; 9JJ;
225 R 14	6JJ; 6K; 6JJJ; 6K; 7L; 7JJ; 6L; 7K; 7K	A70-13	5JJ; 5JJJ; 6JJ; 4JJJ
125 R 15	3JJJ; 3.50B; 3.50C; 3.50; 4.00; 4.00B; 4.00C; 4JJ	B70-13	5JJ; 5JJJ; 6JJ; 6JJJ;
135 R 15	3JJJ; 4JJ; 4JJJ; 3.50; 3.50B; 3.50C; 4.00C	C70-13	5JJJ; 6JJ; 6JJJ; 5JJ
145 R 15	4JJ; 4JJJ; 5JJ;	D70-13	5K; 5JJJ; 6JJ; 6JJJ; 7JJ; 5JJ
155 R 15	4JJ; 4JJJ; 5JJ; 5.00C; 4.50C	A70-14	4JJJ; 5JJ; 5JJJ; 6JJ;
165 R 15	4JJ; 5JJ; 5K; 5JJJ; 4K; 5K	B70-14	5JJ; 5JJJ; 6JJ; 4JJJ
175 R 15	4JJ; 5JJ; 5K; 5JJJ; 5K; 6JJ; 4K; 6K	C70-14	5JJ; 5JJJ; 6JJ; 6JJJ;
185 R 15	5JJ; 5JJJ; 5K; 6JJ; 6L; 6JJJ; 5K; 6K; 6K	D70-14	5JJJ; 6JJ; 6JJJ;
195 R 15	5JJ; 5JJJ; 5K; 6JJ; 6L; 6JJJ; 5K; 6K; 6K	E70-14	5JJJ; 6JJ; 6JJJ; 7JJ
205 R 15	5JJJ; 5K; 6JJ; 6JJJ; 6L; 7JJ; 7L; 6K; 6K; 7K	F70-14	6JJ; 6JJJ; 7JJ; 5JJJ
215 R 15	5JJJ; 5K; 6JJ; 6L; 6JJJ; 6L; 7JJ; 7L; 6K; 6K; 7K	C70-14	6JJ; 6JJJ; 7JJ;
225 R 15	6JJ; 6L; 6JJJ; 6L; 7JJ; 7L; 6K; 7K; 7K; 7L	H70-14	6JJJ; 7JJ; 8JJ; 6JJ
235 R 15	6JJ; 6L; 6JJJ; 6L; 7JJ; 7L;	J70-14	6JJJ; 7JJ; 8JJ;
205 R 16	5JJJ; 5K; 6JJ; 6JJJ; 6L; 7JJ; 7L; 6K; 6L; 6K; 7K	L70-14	6JJJ; 7JJ; 8JJ;
6.70-13	4JJJ; 5JJ; 5JJJ; 6JJ;	C70-15	5JJ; 5JJJ; 6JJ; 6JJJ
5.20-14	3JJJ; 3.50B; 4JJ; 4JJJ	D70-15	5JJ; 5JJJ; 6JJ; 6JJJ;
5.60-14	4JJ; 4JJJ; 5JJ	E70-15	5JJJ; 6JJ; 6JJJ; 7JJ
5.90-14	4JJ; 4JJJ; 5JJ	F70-15	5JJJ; 6JJ; 6JJJ; 7JJ
5.60-15	4JJ; 4JJJ; 5JJ	G70-15	6JJ; 6JJJ; 7JJ; 7K
5.90-15	4JJ; 4JJJ; 5JJ	H70-15	6JJ; 6JJJ; 7JJ; 8JJ; 7K; 7JJ
6.40-15	4JJJ; 4K; 5JJ; 5K; 5JJJ	J70-15	6JJJ; 7JJ; 8JJ;
BR50-13	6JJJ	K70-15	6JJJ; 7JJ; 8JJ;
CR50-14	8JJ	L70-15	6JJJ; 7JJ; 8JJ;
GR50-15	7JJ	ZR70-12	5JJ; 5JJJ; 6JJ;
HR50-15	8JJ	AR70-12	5JJ; 5JJJ; 6JJ;
LR50-15	8JJ	ZR70-13	4.50B; 4JJ; 5JJ; 5JJJ; 6JJ;
AR60-13	5JJJ; 6JJ; 6JJJ; 7JJ	AR70-13	5JJ; 5JJJ; 6JJ; 4JJJ;
ER60-13	5JJJ; 6JJ; 6JJJ; 7JJ;	BR70-13	5JJ; 5JJJ; 6JJ; 6JJJ;
CF60-13	6JJ; 6JJJ; 7JJ; 8JJ;	CR70-13	5JJJ; 6JJ; 6JJJ;
DR60-13	6JJ; 6JJJ; 7JJ; 8JJ;	DR70-13	5JJJ; 6JJ; 6JJJ; 7JJ; 5JJ
ER60-13	6JJJ; 7JJ; 8JJ;	WR70-13	4JJ; 4JJJ; 5JJ; 5JJJ
AR60-14	5JJJ; 6JJ; 6JJJ; 7JJ	AR70-14	5JJ; 5JJJ; 6JJ;
		BR70-14	5JJ; 5JJJ; 6JJ;
		CR70-14	5JJ; 5JJJ; 6JJ; 6JJJ;
		DR70-14	5JJJ; 6JJ; 6JJJ; 6K;
		ER70-14	5JJJ; 6JJ; 6JJJ; 7JJ;
		FR70-14	6JJ; 6JJJ; 7JJ; 7JJJ

NOTE: It is permissible to use existing J or JK rims where 'JJ' rims are specified in the above table.

** Table 1 *Amended October 1981

TABLE 2.0 - PART A (CONTINUED)

APPROVED RIMS FOR TYRES

Tyre ** Size Designation	Approved Rims
GR70-14	6JJ; 6½JJ; 7JJ; 6L; 7L
HR70-14	6½JJ; 7JJ; 8JJ; 6L; 7L
JR70-14	6½JJ; 7JJ; 7L; 8JJ
LR70-14	6½JJ; 7JJ; 7L; 8JJ
CR70-15	5JJ; 5½JJ; 6JJ; 6½JJ
DR70-15	5½JJ; 6JJ; 6½JJ
ER70-15	5½JJ; 6JJ; 6½JJ; 7JJ; 6L
FR70-15	6K; 5½JJ; 6JJ; 6½JJ; 7JJ; 6L
GR70-15	6K; 6JJ; 6½JJ; 7JJ; 6L; 7L; 7½K
HR70-15	6L; 6K; 6JJ; 6½JJ; 7JJ; 8JJ; 7L
JR70-15	6JJ; 6½JJ; 7JJ; 8JJ; 7L
KR70-15	6½JJ; 7JJ; 8JJ; 7L
LR70-15	6JJ; 6½JJ; 7JJ; 8JJ
MR70-15	7JJ; 8JJ; 9JJ
YR 15	4½JJ; 5JJ; 5½JJ
Y 2	4½JJ; 5JJ; 5½JJ; 4JJ
Z78-12	4½JJ; 5JJ; 5½JJ; 4JJ
Y78-13	4JJ; 4½JJ; 5JJ
Z78-13	4½JJ; 5JJ; 5½JJ; 4JJ
A78-13	4½JJ; 5JJ; 5½JJ
B78-13	4½JJ; 5JJ; 5½JJ; 6JJ
C78-13	5JJ; 5½JJ; 6JJ
D78-13	5½JJ; 5JJ; 6JJ; 6½JJ
B78-14	4½JJ; 5JJ; 5½JJ; 5K; 4½K
C78-14	5JJ; 5½JJ; 6JJ; 5K; 4½K
D78-14	5JJ; 5½JJ; 6JJ; 6½JJ; 5K
E78-14	5JJ; 5½JJ; 6JJ; 6½JJ; 5K; 5½K
F78-14	5JJ; 5½JJ; 6JJ; 6½JJ; 5K; 5½K; 6K; 7JJ
G78-14	5½JJ; 6JJ; 6½JJ; 7JJ; 5½K; 6K
H78-14	6JJ; 6½JJ; 7JJ; 6K; 6½K
J78-14	6JJ; 6K; 6½JJ; 7JJ
A78-15	4½JJ; 5JJ; 5½JJ
C78-15	4½JJ; 5JJ; 5½JJ; 6JJ; 4½K; 5K; 5½K
D78-15	5JJ; 5½JJ; 6JJ; 5K
E78-15	5JJ; 5½JJ; 6JJ; 6½JJ; 5K; 5½K
F78-15	5JJ; 5½JJ; 6JJ; 6½JJ; 5K; 5½K
G78-15	5½JJ; 6JJ; 6½JJ; 7JJ; 5½K; 6K; 6L
H78-15	6JJ; 6½JJ; 7JJ; 6K; 6L; 6½K
L84-15	5½JJ; 6JJ; 6½JJ; 7JJ
J78-15	6JJ; 6K; 6L; 6½JJ; 7JJ
L78-15	6JJ; 6K; 6L; 6½JJ; 7JJ
H 15	7JJ; 8JJ; 6½JJ
H 4	9JJ
Q50-15	7JJ
A60-13	5½JJ; 6JJ; 6½JJ; 7JJ
B60-13	6JJ; 7JJ; 5½JJ; 6½JJ
C60-13	6JJ; 6½JJ; 7JJ; 8JJ
D60-13	6JJ; 6½JJ; 7JJ; 8JJ
D60-14	6JJ; 6½JJ; 7JJ; 8JJ
B60-14	7JJ; 6JJ; 6½JJ; 8JJ
P60-14	7JJ; 6½JJ; 8JJ
C60-14	7JJ; 8JJ; 9JJ; 6½JJ
H60-14	6½JJ; 7JJ; 8JJ; 9JJ
J60-14	7JJ; 8JJ; 9JJ
L60-14	8JJ; 9JJ; 10JJ
360-15	5½JJ
C60-15	5½JJ; 6JJ; 6½JJ; 7JJ; 7K
B60-15	6JJ; 7JJ; 8JJ; 6½JJ

Tyre ** Size Designation	Approved Rims
F60-15	6½JJ; 7JJ; 8JJ
G60-15	7JJ; 8JJ; 9JJ; 6½JJ
H60-15	7JJ; 8JJ; 8K; 9JJ
J60-15	7JJ; 8JJ; 9JJ
L60-15	7JJ; 8JJ; 9JJ
E50C-16	16C - 3½
F50C-16	16C - 3½
G50C-17	17C - 3½
H50C-17	17C - 3½
L50C-18	18C - 3½; 18C - 4
AR78-13	4½JJ; 5JJ; 5½JJ
BR78-13	4½JJ; 5JJ; 6JJ; 5½JJ
CR78-13	5JJ; 5½JJ; 6JJ
BR78-14	4½JJ; 5JJ; 5½JJ
CR78-14	4½JJ; 5JJ; 5½JJ; 6JJ
DR78-14	5JJ; 6JJ; 5½JJ
ER78-14	5JJ; 5½JJ; 6JJ; 6½JJ
FR78-14	5½JJ; 6JJ; 6½JJ; 7JJ
GR78-14	6JJ; 5½JJ; 6½JJ; 7JJ
HR78-14	6JJ; 6½JJ; 7JJ
JR78-14	6JJ; 6½JJ; 7JJ
AR78-15	4½JJ; 4JJ; 5JJ
BR78-15	4½JJ; 5JJ; 5½JJ
CR78-15	5JJ
ER78-15	5½JJ; 5JJ; 6JJ
FR78-15	5½JJ; 5JJ; 6JJ; 6½JJ
GR78-15	5½JJ; 6JJ; 6½JJ; 7JJ
HR78-15	5½JJ; 6JJ; 6½JJ; 7JJ
JR78-15	7JJ; 6JJ; 6½JJ
LR78-15	6JJ; 6½JJ; 7JJ
MR78-15	6½JJ
NR78-15	7JJ
YR78-12	4JJ; 4½JJ; 5JJ
ZR78-12	4½JJ; 5JJ; 5½JJ
YR78-13	4JJ; 4½JJ; 5JJ
ZR78-13	4½JJ; 5JJ; 5½JJ
YR78-14	4JJ; 4½JJ; 5JJ
WR78-15	5½JJ; 4JJ; 4½JJ
ZR78-15	4JJ; 4½JJ; 5JJ
205/50R15	5½JJ; 5½K; 6JJ; 6L; 6½JJ; 6½K; 6½L; 7K; 7½K
225/50R15	6JJ; 6L; 6½JJ; 6½K; 6½L; 7K; 7½K; 8K; 8JJ
165/70R10	4½JJ
165/70R13	4½JJ; 5JJ; 5½JJ; 4JJ
175/70R13	5JJ; 5½JJ; 4½JJ; 5.50; 5.50B; 6JJ
185/70R13	5JJ; 5½JJ; 6JJ; 6½JJ; 4½JJ
195/70R13	5½JJ; 6JJ; 6½JJ; 5JJ
155/70R14	4JJ; 4½JJ; 5JJ; 4.00C; 4.50C; 5K
175/70R14	5JJ; 5½JJ; 4½JJ; 6JJ
185/70R14	5JJ; 5½JJ; 6JJ; 6½JJ; 5K; 6L; 4½JJ
195/70R14	5½JJ; 6JJ; 6½JJ; 5JJ
175/70R15	5JJ; 4½JJ; 5½JJ; 6JJ; 5K
185/70R15	5JJ; 5½JJ; 6JJ; 6½JJ; 5K; 6L
205/70R13	5½JJ; 6JJ; 6½JJ; 7JJ
205/70R14	5½JJ; 6JJ; 6½JJ; 7JJ
215/70R14	6JJ; 6L; 6½JJ; 7JJ
225/70R14	6JJ; 6L; 6½JJ; 7JJ; 7L; 7½K; 8JJ
195/70R15	5½JJ; 6JJ; 6½JJ; 6L
205/70R15	5½JJ; 6JJ; 6½JJ; 7JJ; 6½L; 6L
215/70R15	6JJ; 6L; 6½JJ; 7L; 5½JJ; 7JJ; 6½L
225/70R15	6JJ; 6½JJ; 7JJ; 6L; 7L; 7½K; 6½K; 7K
235/70R15	6K; 6JJ; 6½JJ; 7JJ; 8JJ

NOTE: It is permissible to use existing J or JK Rims where 'JJ' Rims are specified in the above Table.

** From Table 1.

* Amended February 1981

TABLE 2.0 PART A
APPROVED RIMS FOR TYRES

Tyre ** Size Designation	Approved Rims	Tyre ** Size Designation	Approved Rims
14S-10/ 5.9S-10 12S-12/ 5.3S-12 13S-12/ 5.6S-12 14S-12/ 5.9S-12 15S-12/ 6.1S-12 13S-13/ 5.6S-13 14S-13/ 5.9S-13 15S-13/ 6.1S-13 16S-13/ 6.4S-13 17S-13/ 6.9S-13 18S-13/ 7.3S-13 13S-14/ 15S-14 14S-14/ 5.9S-14 15S-14/ 6.1S-14 12S-15/ 5.3S-15 13S-15/ 5.6S-15 14S-15/ 5.9S-15 15S-15 6.3S-15 17S-15/ 7.1S-15 16S-14/ 6.4S-14 17S-14/ 6.9S-14	4.00C; 4JJ; 3½JJ; 3.50B; 3.50; 4.00; 4.00B; 4.50; 4.50B; 4.50C; 4½JJ; 5 JJ 3.50B; 3½JJ; 3.50; 4JJ; 4.00; 4.00B; 4.00C 4.00C; 4JJ; 3½JJ; 3.50; 3.50B; 4.00B; 4.00 4.50; 4.50B; 4.50C; 4½JJ 4.00C; 4JJ; 4.00; 4.00B; 4½JJ; 4.50; 4.50B; 4.50C; 5JJ; 3½JJ 4½JJ; 4.50C; 4JJ; 4.00; 4.00B; 4.00C; 4.50 4.50B; 5JJ 4JJ; 4.00C; 3½JJ; 3.50; 3.50B; 4.00; 4.00B; 4.50; 4.50B; 4.50C; 4½JJ; 4JJ; 4.00C; 4.00; 4.00B; 4½JJ; 4.50; 4.50B; 4.50C; 5JJ; 3½JJ 4½JJ; 4.50C; 4JJ; 4.00C; 4½K; 5JJ; 5K 4½JJ; 4.50C; 4½K; 5JJ; 5K; 5½JJ; 5JJ; 5½JJ; 4½JJ; 4½K; 5K; 5½K; 6JJ; 5½JJ; 5JJ; 5K; 5½K; 6JJ; 6K 4JJ; 4.00C; 3½JJ; 4½JJ; 4/50C; 4JJ; 4.00C; 4½JJ; 4.50C; 5JJ; 4½JJ; 4.50C; 4JJ; 4½K; 5JJ; 5K; 4.00C 3½JJ; 4JJ; 4.00C; 4JJ; 4.00C; 3½JJ; 4½JJ; 4.50C 4JJ; 4.00C; 4½JJ; 4.50C; 5JJ; 4½JJ; 4JJ; 4½K; 5JJ; 5K 5JJ; 4½JJ; 4½K; 5K; 5½JJ; 5½K; 6JJ; 4.50C; 4½JJ; 4½K; 5JJ; 5K; 5½JJ 5JJ; 4½JJ; 4½K; 5K; 5½JJ; 5½K; 6JJ	18S-14/ 7.3S-14 19S-14/ 7.7S-14 20S-14/ 8.2S-14 21S-14/ 8.5S-14 22S-14/ 8.8S-14 16S-15/ 6.8S-15 18S-15/ 7.3S-15 19S-15/ 7.7S-15 20S-15/ 8.1S-15 21S-15/ 8.8S-15 23S-15/ 140 R 12 150 R 12 150 R 13 160 R 13 170 R 13 150 R 13 180 R 15 17S R 16	5½JJ; 5JJ; 5K; 5½K; 6JJ; 6K; 5½JJ; 5JJ; 5K; 5½K; 6JJ; 6K 6½JJ; 6½K 6JJ; 6L; 5½JJ; 5½K; 6K; 6½JJ; 6½K; 6½L; 7K; 7L 6JJ; 6L; 5½JJ; 5½K; 6½JJ; 6½K; 6½L; 7JJ; 7K; 7L; 7½K; 7½L 6½JJ; 6½L; 6JJ; 6L; 7JJ; 7K; 7L; 7½K; 7½L 4½JJ; 4½K; 5JJ; 5K; 5½JJ; 5½K; 5JJ; 5½JJ; 5K; 5½K; 6JJ; 6K 5½JJ; 5JJ; 5K; 5½K; 6JJ; 6K; 6L 6½JJ; 6½L; 6½K; 6JJ; 6L; 5½JJ; 5½K; 6K; 6½JJ; 6½K; 6½L; 7JJ; 7K; 7L 6JJ; 6L; 5½JJ; 6½JJ; 6½L; 6½K; 7JJ; 7K; 7L; 7½K; 7½L 6½JJ; 6JJ; 7JJ; 8JJ; 4.00; 4.00B; 4JJ; 4.50; 4.50B; 4½JJ; 3½JJ; 3.50; 3.50B; 3.50D; 4.00C; 4.50C; 4½K; 3½JJ; 4.00B; 4JJ; 4½JJ; 5.00; 5.00B; 5.00C; 5K; 5JJ; 3.50; 3.50B; 3.50D 4.00; 4.00C; 4.50; 4.50B; 4.50C; 4½K 3½JJ; 4.00B; 4JJ; 4½JJ; 5JJ; 6.00; 5.00B; 5.00C; 5K; 3.50; 3.50B; 3.50D 4.00; 4.00C; 4.50; 4.50B; 4.50C; 4½K 4.00B; 4½JJ; 5JJ; 5½JJ; 5K; 5½K; 4JJ; 4.00; 4.00C; 4.50; 4.50B; 4.50C; 4½K; 5.00; 5.00B; 5.00C; 4½JJ; 5JJ; 5½JJ; 6JJ; 4.50; 4.50B; 4.50C; 4½K; 5.00; 5.00B; 5.00C; 5K; 5½K; 6K; 6L; 4JJ; 4½JJ; 5.00B; 5.00C; 5K; 5JJ; 4.00B; 4.00; 4.00C; 4.50; 4.50B; 4.50C; 4½K; 5.00; 5JJ; 5½JJ; 6JJ; 6K; 6L; 4½JJ; 4.50; 4.50B; 4.50C; 4½K; 5.00; 5.00B; 5.00C; 5K; 5½K; 4½J, 4½K, 5J, 5K, 5½J, 5½K, 4.50E;

NOTE : It is permissible to use existing J or JK rims where 'JJ' rims are specified in the above table.

** Table 1

*Amended August 1962

TABLE 2.0 PART A (CONTINUED)

APPROVED RIMS FOR TYRES

Tyre Size Designation	Approved Rims
145-10	4JJ, 4½JJ, 5JJ, 3½JJ, 3.50B
125-12	3½JJ, 4JJ
135-12	3½JJ, 4JJ, 4½JJ
145-12	4JJ, 4½JJ, 5JJ
155-12	4JJ, 4½JJ, 5JJ
135-13	3½JJ, 4JJ, 4½JJ
145-13	4JJ, 4½JJ, 5JJ, 4.50B
155-13	4JJ, 4½JJ, 5JJ, 4.50B
165-13	4½JJ, 5JJ, 5½JJ, 4.50B, 5.50B
175-13	4½JJ, 5JJ, 5½JJ, 6JJ, 5.50B
185-13	5JJ, 5½JJ, 6JJ, 6½JJ
195-13	5JJ, 5½JJ, 6JJ, 6½JJ
135-14	3½JJ, 4JJ, 4½JJ
145-14	4JJ, 4½JJ, 5JJ
155-14	4JJ, 4½JJ, 5JJ
165-14	4½JJ, 5JJ, 5½JJ
175-14	4½JJ, 5JJ, 5½JJ, 6JJ
185-14	5JJ, 5½JJ, 6JJ, 6½JJ
195-14	5JJ, 5½JJ, 6JJ, 6½JJ
205-14	6JJ, 5½JJ, 6½JJ, 7JJ
215-14	5½JJ, 6JJ, 6½JJ, 7JJ
225-14	6JJ, 6½JJ, 7JJ
125-15	3½JJ, 4JJ
135-15	3½JJ, 4JJ, 4½JJ
145-15	4JJ, 4½JJ, 5JJ
155-15	4JJ, 4½JJ, 5JJ
165-15	4½JJ, 5JJ, 5½JJ
175-15	4½JJ, 5JJ, 5½JJ, 6JJ
180-15	4½JJ, 5JJ, 5½JJ
185-15	5JJ, 5½JJ, 6JJ, 6½JJ
195-15	5JJ, 5½JJ, 6JJ, 6½JJ
205-15	5½JJ, 6JJ, 6½JJ, 7JJ
215-15	5½JJ, 6JJ, 6½JJ, 7JJ
220-15	5½JJ, 6JJ, 6½JJ, 7JJ
225-15	6JJ, 6½JJ, 7JJ
230-15	6JJ, 6½JJ, 7JJ
235-15	6JJ, 6½JJ, 7JJ, 8JJ
240-15	6JJ, 6½JJ, 7JJ
185-16	5JJ, 5K, 5½JJ, 5½K, 6L
165-400	4.65
G77-14	5½JJ, 6JJ, 6½JJ, 7JJ

Tyre Size Designation	Approved Rims
5.9-10	4JJ, 5JJ, 4½JJ
5.9-12	4JJ, 4½JJ, 5JJ
6.2-12	4JJ, 4½JJ, 5JJ
6.2-13	4JJ, 4½JJ, 5JJ
6.5-13	4½JJ, 5JJ, 5½JJ
6.9-13	4½JJ, 5JJ, 5½JJ, 6JJ
6.2-15	4JJ, 4½JJ, 5JJ
6.9-15	4½JJ, 5JJ, 5½JJ, 6JJ
5.20 R 10	3½JJ, 4JJ, 4½JJ
5.00 R 12	3½JJ, 4JJ
5.20 R 12	3½JJ, 4JJ, 4½JJ
5.50 R 12	4JJ, 4½JJ
5.60 R 12	4JJ, 4½JJ, 5JJ
5.00 R 13	3½JJ, 4JJ
5.20 R 13	3½JJ, 4JJ, 4½JJ
5.50 R 13	4JJ, 4½JJ
5.60 R 13	4JJ, 4½JJ, 5JJ
6.00 R 13	4JJ, 4½JJ, 5JJ
5.90 R 13	4JJ, 4½JJ, 5JJ
6.40 R 13	4½JJ, 5JJ, 5½JJ
6.50 R 13	4½JJ, 5JJ, 5½JJ
6.70 R 13	4½JJ, 5JJ, 5½JJ
7.00 R 13	4½JJ, 5JJ, 5½JJ, 6JJ
7.25 R 13	5JJ, 5½JJ, 6JJ
5.20 R 14	3½JJ, 4JJ, 4½JJ
5.90 R 14	4JJ, 4½JJ, 5JJ
7.00 R 14	4½JJ, 5JJ, 5½JJ, 6JJ
7.50 R 14	5JJ, 5½JJ, 6JJ, 6½JJ
5.60 R 15	4JJ, 4½JJ, 5JJ
6.40 R 15	4½JJ, 5JJ, 5½JJ
6.70 R 15	4½JJ, 5JJ, 5½JJ, 6JJ
7.60 R 15	5JJ, 5½JJ, 6JJ, 6½JJ
G35C-16	16C - 4½, 16C - 5
AR60-15	6½JJ
FR60-15	7½JJ
HR60-15	9L
185/60 R13	5JJ, 5½JJ, 6JJ, 6½JJ
205/60R14	6JJ, 7JJ
245/60R14	6½JJ, 7JJ, 8JJ
235/60R15	6½JJ, 7JJ, 8JJ
255/60R15	7JJ, 8JJ, 9JJ, 9L
265/60R14	7JJ, 8JJ, 9JJ
215/60R15	6JJ, 7JJ
C60C-15	4JJ, 4½JJ
H50-14	8JJ

NOTE: It is permissible to use existing J or JK rims where 'JJ' rims are specified in the above table.

Table 1

* Amended February 1981

TABLE 2.0 - PART A (CONTINUED)

Tyre size Designation	Approved Rims
145/70R12	4.00B; 4JJ; 4.50B; 4½JJ; 5.00B; 5JJ
155/70R12	4.00B; 4.50B; 5.00B; 5.50B; 3.50C; 4.00C; 4.50C; 3.50D; 4JJ; 4½JJ; 5JJ; 4K; 4½k; 5K
165/70R12	4.50B; 5.00B; 5.50B; 6.00B; 4.50C; 5.00C; 6.00C; 4JJ; 4½JJ; 5JJ; 5½JJ; 4½K; 5K; 5½K
205/40D13	7JJ; 7½JJ; 8JJ
175/50D13	5.00B; 5.50B; 5JJ; 5½JJ; 6JJ
195/55R13	5½JJ; 6JJ; 6½JJ; 7JJ
225/55R13	6JJ; 6½JJ; 7JJ; 7½JJ; 8JJ
205/60R13	5½JJ; 6JJ; 6½JJ; 7JJ
215/60R13	6JJ; 6½JJ; 7JJ; 7½JJ
225/60R13	6JJ; 6½JJ; 7JJ; 7½JJ; 8JJ
235/60R13	6JJ; 6½JJ; 7JJ; 7½JJ; 8JJ
155/65R13	4½JJ; 5JJ; 5½JJ; 4.50B; 5.00B; 5.50B
165/65R13	4½JJ; 5JJ; 5½JJ; 6JJ; 4.50B; 5.00B; 5.50B
175/65R13	5JJ; 5½JJ; 6JJ; 6½JJ; 5.00B; 5.50B
185/65R13	5JJ; 5½JJ; 6JJ; 6½JJ; 5.00B; 5.50B
145/70R13	3.50B; 4.00B; 4.50B; 4.00C; 4.50C; 3½JJ; 4JJ; 4½JJ; 5JJ; 4½K; 5K
155/70R13	4.00B; 4.50B; 5.00B; 5.50B; 3.50C; 4.00C; 4.50C; 3.50D; 4JJ; 4½JJ; 5JJ; 5½JJ; 4K; 4½k; 5K
205/55R14	5½JJ; 6JJ; 6½JJ; 7JJ; 7½JJ
225/55R14	6JJ; 6½JJ; 7JJ; 7½JJ; 8JJ
185/60R14	5JJ; 5½JJ; 6JJ; 6½JJ
195/60R14	5½JJ; 6JJ; 6½JJ; 7JJ
225/60R14	6JJ; 6½JJ; 7JJ; 7½JJ; 8JJ
155/65R14	4½JJ; 5JJ; 5½JJ; 4.50B; 5.00B; 5.50B
165/65R14	4½JJ; 5JJ; 5½JJ; 6JJ; 4.50B; 5.00B; 5.50B
175/65R14	5JJ; 5½JJ; 6JJ; 6½JJ; 5.00B; 5.50B
185/65R14	5JJ; 5½JJ; 6JJ; 6½JJ; 5.00B; 5.50B
195/65R14	5½JJ; 6JJ; 6½JJ; 7JJ
205/65R14	5½JJ; 6JJ; 6½JJ; 7JJ; 7½JJ
165/70R14	4JJ; 4½JJ; 5JJ; 5½JJ; 6JJ; 4½K; 5K; 5½K; 4½L; 5L; 5½L
345/35R15	11JJ; 11½JJ; 12JJ; 12½JJ; 13JJ; 13½JJ
285/40R15	9½JJ; 10JJ; 10½JJ; 11JJ
235/45R15	8JJ; 8½JJ; 9JJ; 9½JJ
195/50R15	5½JJ; 6JJ; 6½JJ; 7JJ
285/50R15	8JJ; 8½JJ; 9JJ; 9½JJ; 10JJ
195/55R15	5½JJ; 6JJ; 6½JJ; 7JJ

* Amended August 1982

TABLE 2.0 - PART A (CONTINUED)

Tyre size Designation	Approved Rims
235/55R15	6½JJ; 7JJ; 7½JJ; 8JJ; 8½JJ
275/55R15	7½JJ; 8JJ; 8½JJ; 9JJ; 9½JJ
185/65R15	5JJ; 5½JJ; 6JJ; 6½JJ
195/65R15	5½JJ; 6JJ; 6½JJ; 7JJ
205/65R15	5½JJ; 6JJ; 6½JJ; 7JJ; 7½JJ
255/70R15	4.00B; 4.50B; 3.50C; 4.00C; 3.50D; 4JJ; 4½JJ; 5JJ; 5½JJ; 4K; 4½K; 5K
225/50R16	6JJ; 6½JJ; 7JJ; 7½JJ, 8JJ
265/50R16	7½JJ; 8JJ; 8½JJ, 9JJ; 9½JJ
205/55R16	5½JJ; 6JJ; 6½JJ; 7JJ; 7½JJ
250/80R16	6JJ; 6½JJ; 7JJ; 7½JJ
190/55 R 340	120 TR; 135 TR; 150 TR; 120 JM; 135 JM; 150 JM
160/65 R 340	105 TR; 120 TR; 135 TR; 105 JM; 120 JM; 135 JM
170/65 R 340	105 TR; 120 TR; 135 TR; 105 JM; 120 JM; 135 JM
180/65 R 340	120 TR; 135 TR; 150 TR; 120 JM; 135 JM; 150 JM
200/65 R 340	135 TR; 150 TR; 165 TR; 135 JM; 150 JM; 165 JM
190/55 R 365	120 TR; 135 TR; 150 TR; 120 JM; 135 JM; 150 JM
160/65 R 365	105 TR; 120 TR; 135 JM; 105 JM; 120 JM; 135 JM
170/65 R 365	105 TR; 120 TR; 135 TR; 105 JM; 120 JM; 135 JM
210/65 R 365	135 TR; 150 TR; 165 TR; 135 JM; 150 JM; 165 JM
200/60 R 390	135 TR; 150 TR; 165 TR; 135 JM; 150 JM; 165 JM
180/65R390	135TR; 150TR; 135JM; 150JM
190/65R390	135TR; 150TR; 165TR; 135JM; 150JM; 165JM
220/55R390	150TR; 165TR; 180TR; 150JM; 165JM; 180JM

* Amended August 1982

NOTE: It is permissible to use existing J or JK Rims where 'JJ' Rims are specified in the above table.

TABLE 2 - APPROVED RIMS

TABLE 2.0 PART B
APPROVED RIMS FOR TYRES

Tyre ** Size Designation	Approved Rims	Tyre ** Size Designation	Approved Rims
5.60-13	3½JJ	FR70-14	5½JJ; 8JJ
5.20-14	3.00D	DR70-15	5JJ
8.25-15	5JJ; 5K	A78-13	4JJ; 6JJ
9.15-15	5½JJ; 5½K	C78-14	4½JJ
145R12	3.50D; 3½JJ	D78-14	4½JJ
145R13	3.50D; 3½JJ	E78-14	4½JJ; 5L; 7JJ
155R13	5½JJ	G78-14	5JJ
165R13	4JJ	E78-15	4½K
175R13	4JJ	F78-15	4½K
205R14	7½K	G78-15	5JJ; 5K
205R15	7½K	M78-15	5½JJ; 5½K
D70-14	5JJ	195R14	7JJ
G70-14	8JJ	AR78-13	6JJ
C70-15	7JJ	ER78-14	7JJ
F70-15	7½JJ; 8JJ	FR78-14	5JJ
G70-15	8JJ	185/70VR15	7JJ
AR70-14	4½JJ	195/70R14	5JJ
155/65R13	4JJ; 4.00B	215/60VR15	8JJ

Note: It is permissible to use existing J or JK Rims where 'JJ' Rims are specified in the above table

** From Table 1

* Amended August 1982

TABLE 2.1 - APPROVED RIMS

TABLE 2.1 - PART A

APPROVED RIMS FOR 'P' TYPE RADIAL PLY TYRES

Nominal Tyre ** Section Width Designation	Approval Rim Width (Inches)
P125	3½, 4, 4½
P135	3½, 4, 4½
P145	4, 4½, 5
P155	4, 4½, 5, 5½
P165	4½, 5, 5½, 6
P175	4½, 5, 5½, 6
P185	5, 5½, 6, 6½
P195	5, 5½, 6, 6½, 7
P205	5½, 6, 6½, 7
P215	5½, 6, 6½, 7
P225	6, 6½, 7, 7½, 8
P235	6, 6½, 7, 8
P245	6½, 7, 8, 9
P255	6½, 7, 8, 9
P265	7, 8, 9
P275	7, 8, 9, 10

** Table 1

Note: All rim widths are Standard 'JJ' contours for 14" and 15" diameters, 'JB' for 13" diameter and 'B' for 12" diameter. *

It is permissible to use existing 'J' or 'JK' rims where 'JJ' is specified and 'J' or 'JJ' where 'JB' is specified in the above table. *

* Amended October 1981

