



Australian Government

Department of Infrastructure,  
Transport, Regional Development  
and Local Government

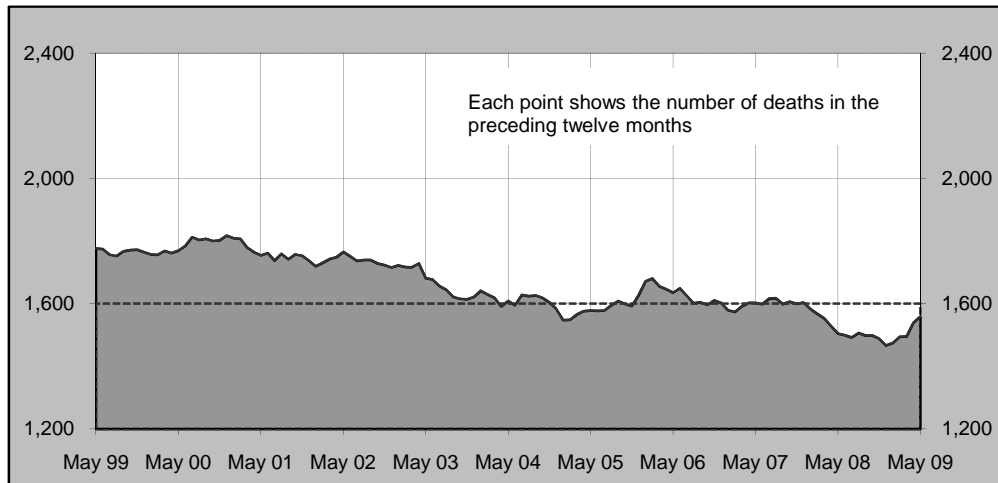
# Road Deaths Australia

## Monthly Bulletin

ISSN 1449-1168

May 2009

Australian road deaths for 12 months to date — last 10 years



### Inquiries

For further information about data in this bulletin, contact:

Strategy and Analysis Section  
Road Safety Branch  
GPO Box 594,  
Canberra, ACT 2601  
Email: [roadsafety@infrastructure.gov.au](mailto:roadsafety@infrastructure.gov.au)  
Internet: [www.infrastructure.gov.au](http://www.infrastructure.gov.au)

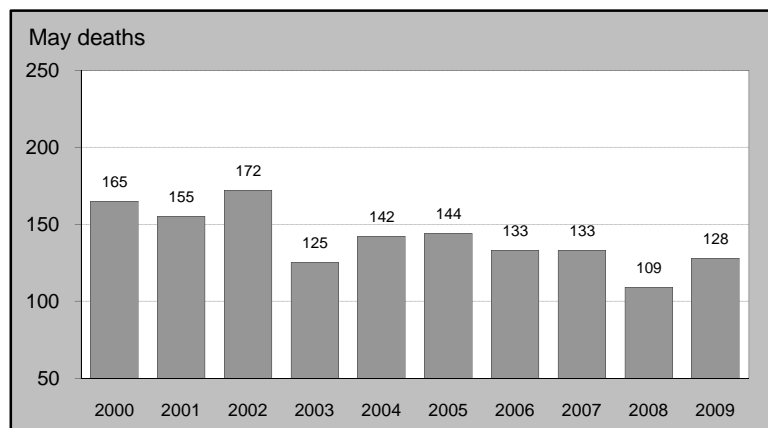
### Data Sources

The data presented here are obtained from the following sources:

- Roads and Traffic Authority, NSW
- Vicroads
- Queensland Transport
- Department for Transport, Energy and Infrastructure, South Australia
- Western Australia Police
- Department of Infrastructure, Energy and Resources, Tasmania
- Department of Planning and Infrastructure, Northern Territory
- Territory and Municipal Services, ACT

- Road deaths from recent months are preliminary and subject to revision.

Australian road deaths for May — last 10 years



### This month's key figures

There was a total of 128 road deaths in May 2009.  
- this is a 17.4 per cent increase over the May 2008 figure.

There have been 664 road deaths in 2009 to the end of May.  
- this is a 16.1 per cent increase over the same 5 month period in 2008.

# NUMBER OF ROAD CRASH DEATHS IN EACH STATE / TERRITORY

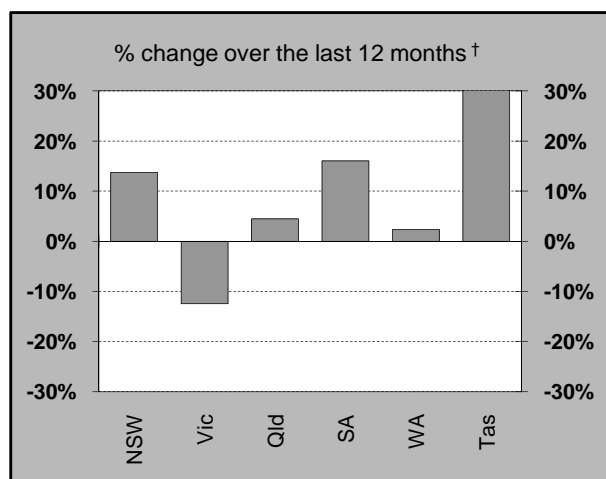
## Road deaths by State/Territory

for current month, year to date, 12 months ended May, and five year trend

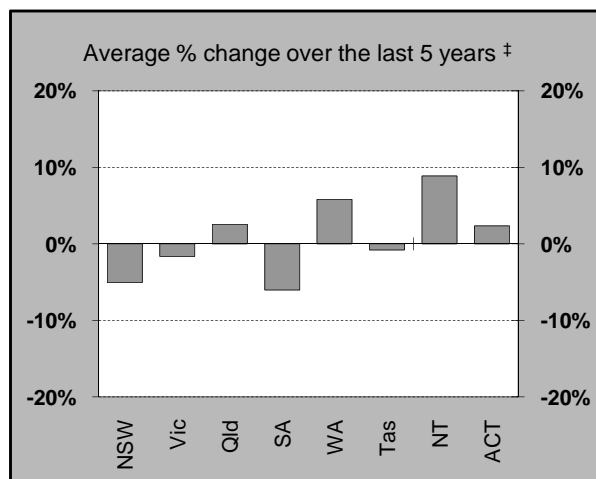
|   | NSW  | Vic   | Qld  | SA    | WA  | Tas   | NT    | ACT   | Australia |
|---|------|-------|------|-------|-----|-------|-------|-------|-----------|
| <b>Current month</b>                                    |      |       |      |       |     |       |       |       |           |
| May 2009  | 34   | 19    | 26   | 19    | 18  | 8     | 3     | 1     | 128       |
| May 2008  | 25   | 25    | 21   | 5     | 17  | 4     | 10    | 2     | 109       |
| % change  | 36.0 | -24.0 | 23.8 | 280.0 | 5.9 | 100.0 | -70.0 | -50.0 | 17.4      |
| <b>Year to date</b>                                     |      |       |      |       |     |       |       |       |           |
| Jan 2009 - May 2009                                     | 193  | 128   | 148  | 59    | 86  | 35    | 9     | 6     | 664       |
| Jan 2008 - May 2008                                     | 143  | 135   | 127  | 35    | 80  | 22    | 25    | 5     | 572       |
| % change  | 35.0 | -5.2  | 16.5 | 68.6  | 7.5 | 59.1  | -64.0 | 20.0  | 16.1      |
| <b>12-months to date</b>                                |      |       |      |       |     |       |       |       |           |
| Jun 2008 - May 2009                                     | 448  | 296   | 349  | 123   | 215 | 53    | 59    | 15    | 1,558     |
| Jun 2007 - May 2008                                     | 394  | 338   | 334  | 106   | 210 | 40    | 69    | 13    | 1,504     |
| Difference  | 54   | -42   | 15   | 17    | 5   | 13    | -10   | 2     | 54        |
| % change  | 13.7 | -12.4 | 4.5  | 16.0  | 2.4 | 32.5  | -14.5 | 15.4  | 3.6       |
| <b>Average annual % change over 5 years<sup>a</sup></b> |      |       |      |       |     |       |       |       |           |
| YE May 2004<br>to YE May 2009                           | -5.1 | -1.6  | 2.5  | -6.0  | 5.8 | -0.8  | 8.9   | 2.3   | -0.9      |

<sup>a</sup> Average annual percentage change based on the exponential trend for the last five 12-month periods

## Percentage change in deaths in each State



† Percentage change between the two 12-month periods ending May 2009 and May 2008. NT and ACT not shown.



‡ Average annual percentage change based on the exponential trend from the year ending May 2004 to year ending May 2009.

# NUMBER OF DEATHS IN EACH ROAD USER GROUP

## Road deaths by road user group and gender

for 12 months ended May 2009, May 2008 and five year trend

|   | Drivers | Passengers | Pedestrians | Motor-cyclists <sup>a</sup> | Cyclists | All road users <sup>b</sup> |
|---|---------|------------|-------------|-----------------------------|----------|-----------------------------|
| <b>Males</b>  |         |            |             |                             |          |                             |
| Jun 2008 - May 2009                                     | 523     | 188        | 142         | 240                         | 29       | 1,125                       |
| Jun 2007 - May 2008                                     | 571     | 169        | 121         | 210                         | 26       | 1,097                       |
| % change  | -8.4    | 11.2       | 17.4        | 14.3                        | 11.5     | 2.6                         |
| <b>Females</b>  |         |            |             |                             |          |                             |
| Jun 2008 - May 2009                                     | 197     | 147        | 63          | 15                          | 6        | 428                         |
| Jun 2007 - May 2008                                     | 156     | 152        | 74          | 21                          | 3        | 406                         |
| % change  | 26.3    | -3.3       | -14.9       | -28.6                       | 100.0    | 5.4                         |
| <b>Persons<sup>c</sup></b>                              |         |            |             |                             |          |                             |
| Jun 2008 - May 2009                                     | 721     | 339        | 205         | 255                         | 35       | 1,558                       |
| Jun 2007 - May 2008                                     | 728     | 321        | 195         | 231                         | 29       | 1,504                       |
| % change  | -1.0    | 5.6        | 5.1         | 10.4                        | 20.7     | 3.6                         |
| <b>Average annual % change over 5 years<sup>d</sup></b> |         |            |             |                             |          |                             |
| YE May 2004<br>to YE May 2009                           | -0.9    | -2.8       | -3.1        | 5.3                         | -2.5     | -0.9                        |

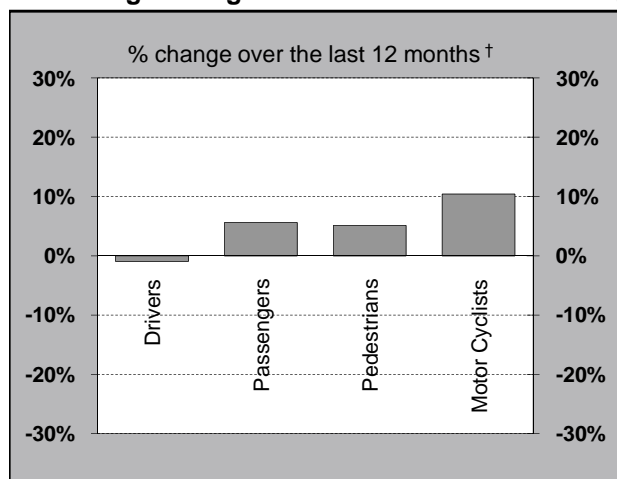
<sup>a</sup> Includes pillion passengers

<sup>b</sup> Includes road users not separately specified

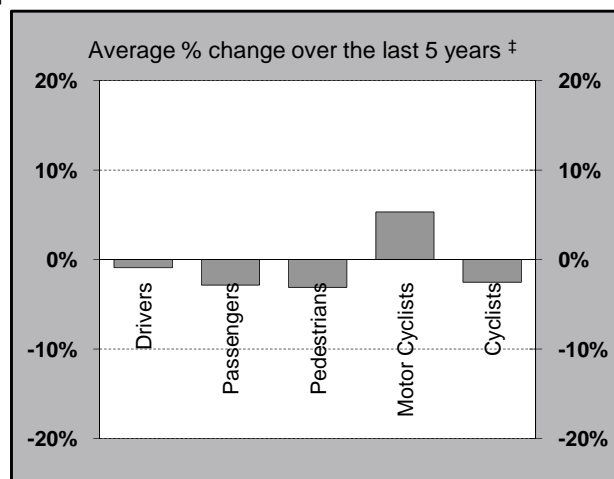
<sup>c</sup> Includes road users with unstated gender

<sup>d</sup> Average annual percentage change based on the exponential trend for the last five 12-month periods

## Percentage change in deaths in each road user group



† Percentage change between the two 12-month periods ending May 2009 and May 2008.  
Cyclists not shown.

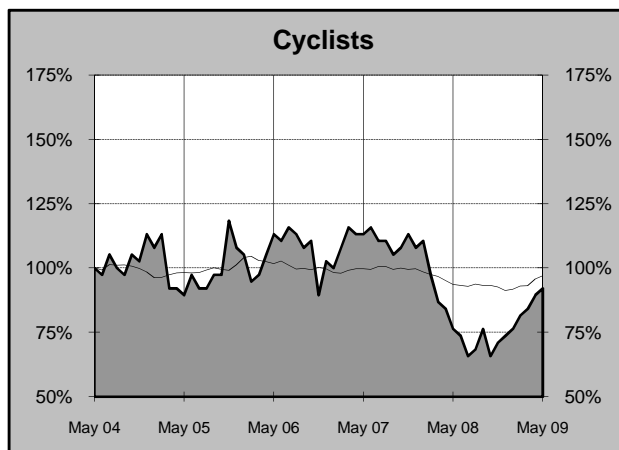
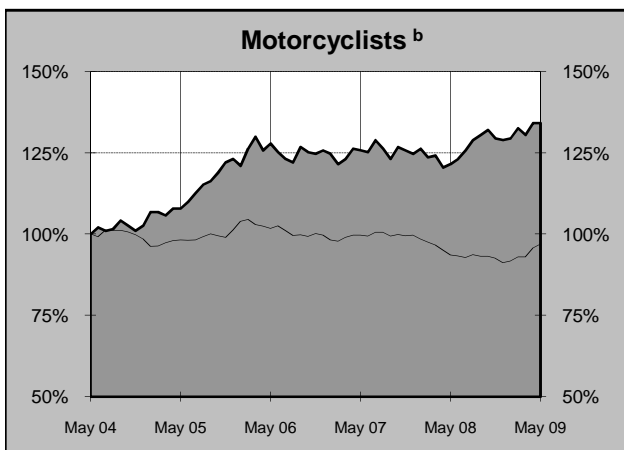
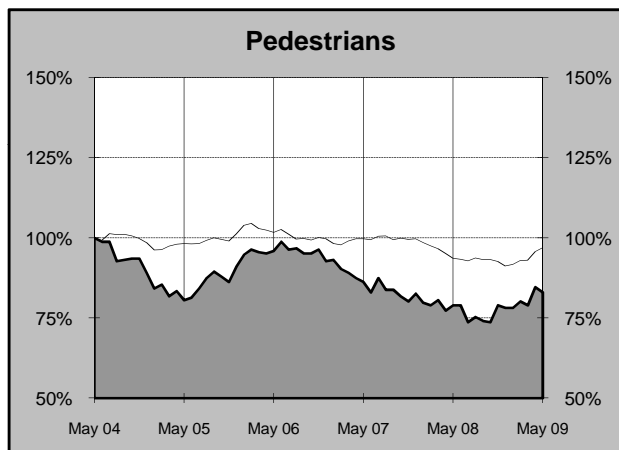
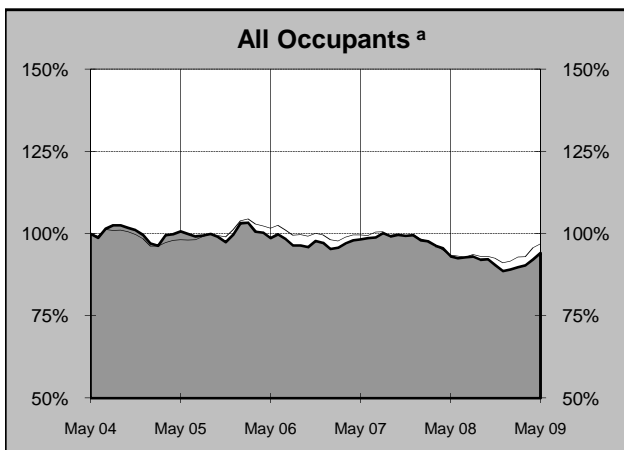
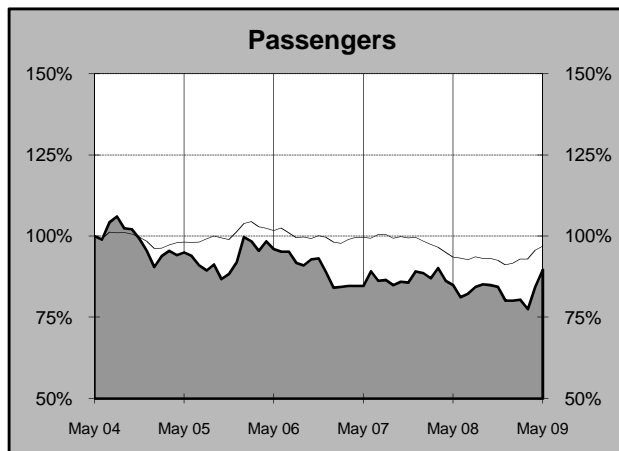
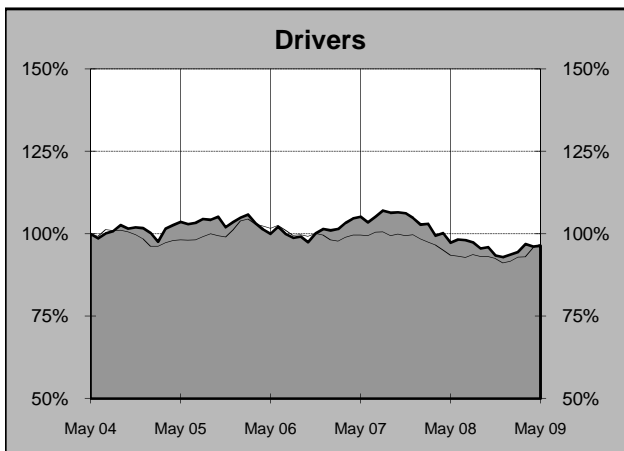
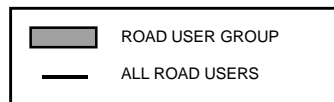


‡ Average annual percentage change based on the exponential trend from the year ending May 2004 to year ending May 2009.

# DEATHS IN EACH ROAD USER GROUP - TRENDS

## Annual deaths in each road user group - last 5 years

The number shown at each month represents the number of deaths in the preceding 12 months expressed as a percentage of the number of deaths in the 12 months to May 2004.



a Comprises drivers and passengers

b Includes pillion passengers

# NUMBER OF FATAL ROAD CRASHES IN EACH STATE / TERRITORY

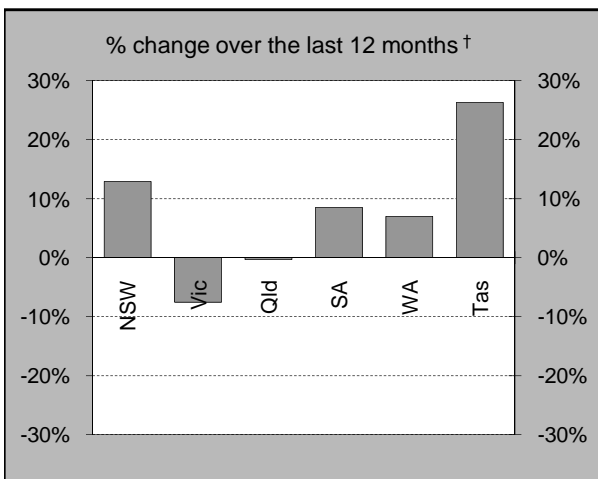
## Fatal crashes by State/Territory

for current month, year to date, 12 months ended May, and five year trend.

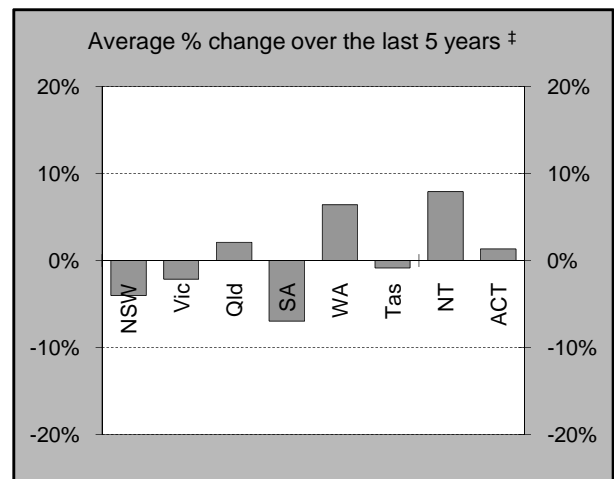
|   | NSW  | Vic   | Qld  | SA    | WA   | Tas  | NT    | ACT   | Australia |
|---|------|-------|------|-------|------|------|-------|-------|-----------|
| <b>Current month</b>                                    |      |       |      |       |      |      |       |       |           |
| May 2009  | 32   | 17    | 21   | 14    | 17   | 6    | 3     | 1     | 111       |
| May 2008  | 25   | 22    | 21   | 5     | 16   | 4    | 10    | 2     | 105       |
| % change  | 28.0 | -22.7 | 0.0  | 180.0 | 6.3  | 50.0 | -70.0 | -50.0 | 5.7       |
| <b>Year to date</b>                                     |      |       |      |       |      |      |       |       |           |
| Jan 2009 - May 2009                                     | 179  | 114   | 127  | 47    | 81   | 31   | 9     | 5     | 593       |
| Jan 2008 - May 2008                                     | 137  | 122   | 113  | 32    | 71   | 21   | 25    | 5     | 526       |
| % change  | 30.7 | -6.6  | 12.4 | 46.9  | 14.1 | 47.6 | -64.0 | 0.0   | 12.7      |
| <b>12 months to date</b>                                |      |       |      |       |      |      |       |       |           |
| Jun 2008 - May 2009                                     | 419  | 270   | 308  | 102   | 199  | 48   | 51    | 14    | 1,411     |
| Jun 2007 - May 2008                                     | 371  | 292   | 309  | 94    | 186  | 38   | 59    | 13    | 1,362     |
| % change  | 12.9 | -7.5  | -0.3 | 8.5   | 7.0  | 26.3 | -13.6 | 7.7   | 3.6       |
| <b>Average annual % change over 5 years<sup>a</sup></b> |      |       |      |       |      |      |       |       |           |
| YE May 2004<br>to YE May 2009                           | -4.0 | -2.1  | 2.1  | -6.9  | 6.4  | -0.8 | 7.9   | 1.3   | -0.8      |

<sup>a</sup> Average annual percentage change based on the exponential trend for the last five 12-month periods

## Percentage change in fatal crashes in each State



† Percentage change between the two 12-month periods ending May 2009 and May 2008. NT and ACT not shown.



‡ Average annual percentage change based on the exponential trend from the year ending May 2004 to year ending May 2009.

## FATAL CRASHES INVOLVING TRUCKS OR BUSES

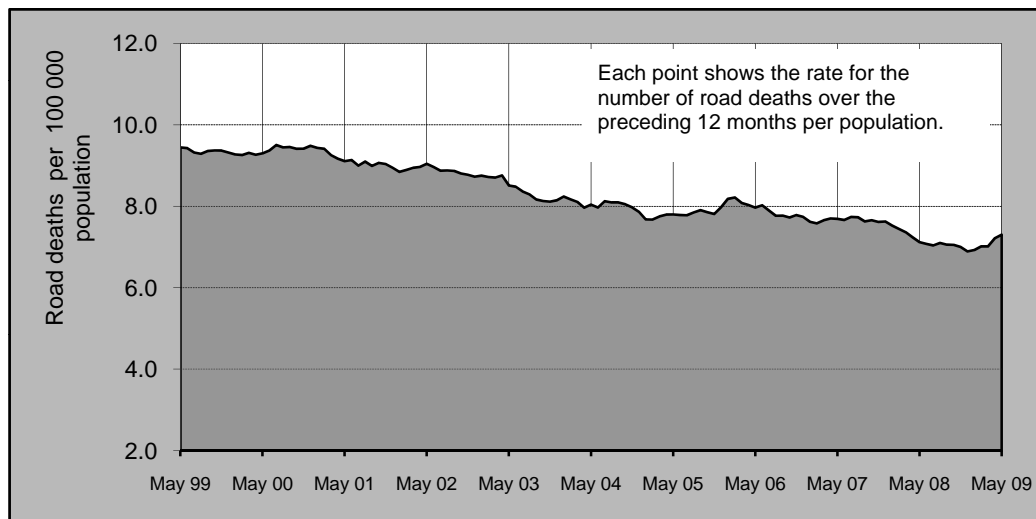
Analysis of fatal crashes involving heavy vehicles is now published in a separate quarterly bulletin.

## ROAD DEATH RATES

### Road deaths per 100,000 population

|                          | NSW | Vic | Qld | SA   | WA  | Tas  | NT   | ACT | Australia |
|--------------------------|-----|-----|-----|------|-----|------|------|-----|-----------|
| <b>12-months to date</b> |     |     |     |      |     |      |      |     |           |
| Jun 2008 - May 2009      | 6.4 | 5.6 | 8.1 | 7.7  | 9.9 | 10.6 | 26.8 | 4.4 | 7.3       |
| Jun 2007 - May 2008      | 5.7 | 6.5 | 7.9 | 6.7  | 9.9 | 8.1  | 31.8 | 3.8 | 7.1       |
| <b>Calendar year</b>     |     |     |     |      |     |      |      |     |           |
| 2008                     | 5.7 | 5.7 | 7.7 | 6.2  | 9.7 | 8.0  | 34.1 | 4.1 | 6.9       |
| 2003                     | 8.1 | 6.7 | 8.1 | 10.3 | 9.2 | 8.6  | 26.5 | 3.4 | 8.1       |

### Australian road deaths per year per 100 000 population - moving 12-monthly data



## CHARACTERISTICS OF FATAL CRASHES

Proportion (per cent) of fatal crashes by speed limit, crash type, time of day, and time of week. Two years ended May 2009 and two years ended May 2004

|                     | Speed limit (km/h) <sup>a</sup> |                         |                           | Time of Day  |                       |
|---------------------|---------------------------------|-------------------------|---------------------------|--------------|-----------------------|
|                     | Up to 60                        | 65-95                   | 100+                      | Day          | Night <sup>b</sup>    |
| Jun 2007 - May 2009 | 32.0%                           | 23.8%                   | 44.3%                     | 56.8%        | 43.2%                 |
| Jun 2002 - May 2004 | 31.2%                           | 22.3%                   | 46.5%                     | 56.2%        | 43.8%                 |
|                     | Crash Type                      |                         |                           | Time of week |                       |
|                     | Pedestrian crash                | Other single veh. Crash | Other multiple veh. crash | Week day     | Week-end <sup>c</sup> |
| Jun 2007 - May 2009 | 14.3%                           | 48.0%                   | 37.7%                     | 60.2%        | 39.8%                 |
| Jun 2002 - May 2004 | 16.1%                           | 44.4%                   | 39.5%                     | 59.6%        | 40.4%                 |

<sup>a</sup> Excludes ACT

<sup>b</sup> 6:00 pm to 5:59 am

<sup>c</sup> 6:00 pm Friday to 5:59 am Monday

# ROAD DEATHS BY AGE, GENDER AND ROAD USER GROUP

## Road deaths by age and gender for 12 months ended May 2009 and May 2008

|                            | 0-16<br>years | 17-20<br>years | 21-25<br>years | 26-39<br>years | 40-59<br>years | 60+<br>years | <b>All<br/>deaths<sup>a</sup></b> |
|----------------------------|---------------|----------------|----------------|----------------|----------------|--------------|-----------------------------------|
| <b>Males</b>               |               |                |                |                |                |              |                                   |
| Jun 2008 - May 2009        | 58            | 143            | 171            | 297            | 279            | 171          | 1,125                             |
| Jun 2007 - May 2008        | 53            | 148            | 152            | 292            | 275            | 175          | 1,097                             |
| % change                   | 9.4           | -3.4           | 12.5           | 1.7            | 1.5            | -2.3         | 2.6                               |
| <b>Females</b>             |               |                |                |                |                |              |                                   |
| Jun 2008 - May 2009        | 30            | 69             | 31             | 75             | 110            | 113          | 428                               |
| Jun 2007 - May 2008        | 47            | 38             | 38             | 74             | 101            | 105          | 406                               |
| % change                   | -36.2         | 81.6           | -18.4          | 1.4            | 8.9            | 7.6          | 5.4                               |
| <b>Persons<sup>b</sup></b> |               |                |                |                |                |              |                                   |
| Jun 2008 - May 2009        | 93            | 212            | 202            | 372            | 389            | 284          | 1,558                             |
| Jun 2007 - May 2008        | 100           | 186            | 190            | 366            | 376            | 280          | 1,504                             |
| % change                   | -7.0          | 14.0           | 6.3            | 1.6            | 3.5            | 1.4          | 3.6                               |

a Includes road users with unstated age

b Includes road users with unstated gender

## Road deaths by age for each main road user group

|                                  | 0-16<br>years | 17-20<br>years | 21-25<br>years | 26-39<br>years | 40-59<br>years | 60+<br>years | <b>All<br/>deaths<sup>a</sup></b> |
|----------------------------------|---------------|----------------|----------------|----------------|----------------|--------------|-----------------------------------|
| <b>Occupants<sup>b</sup></b>     |               |                |                |                |                |              |                                   |
| Jun 2008 - May 2009              | 72            | 166            | 149            | 228            | 248            | 194          | 1,060                             |
| Jun 2007 - May 2008              | 71            | 153            | 133            | 238            | 246            | 204          | 1,049                             |
| % change                         | 1.4           | 8.5            | 12.0           | -4.2           | 0.8            | -4.9         | 1.0                               |
| <b>Motorcyclists<sup>c</sup></b> |               |                |                |                |                |              |                                   |
| Jun 2008 - May 2009              | 3             | 22             | 35             | 92             | 82             | 20           | 255                               |
| Jun 2007 - May 2008              | 6             | 22             | 36             | 83             | 70             | 14           | 231                               |
| % change                         | -50.0         | 0.0            | -2.8           | 10.8           | 17.1           | 42.9         | 10.4                              |
| <b>Pedestrians</b>               |               |                |                |                |                |              |                                   |
| Jun 2008 - May 2009              | 15            | 21             | 15             | 41             | 47             | 64           | 205                               |
| Jun 2007 - May 2008              | 18            | 10             | 19             | 40             | 48             | 58           | 195                               |
| % change                         | -16.7         | 110.0          | -21.1          | 2.5            | -2.1           | 10.3         | 5.1                               |

a Includes road users with unstated age

b Comprises drivers and passengers

c Includes pillion passengers

## 1. Definition

The road safety agencies in each jurisdiction use detailed criteria to define road crashes and road deaths. Briefly, a death is classified as resulting from a road crash if the crash occurred on a public road, is unintentional and the death occurred within 30 days from injuries sustained in the crash.

Road deaths from recent months are preliminary and subject to revision.

## 2. Other sources for the tables in this bulletin

The underlying database used to produce this bulletin is available for online querying and data extraction at

[http://www.infrastructure.gov.au/roads/safety/road\\_fatality\\_statistics/fatal\\_road\\_crash\\_database.aspx](http://www.infrastructure.gov.au/roads/safety/road_fatality_statistics/fatal_road_crash_database.aspx)

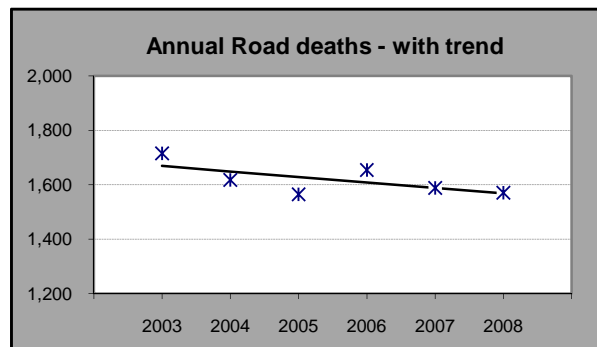
## 3. Estimation of five year trends

In this bulletin, the figures for the 'Average annual per cent change over 5 years' are calculated by fitting an exponential trend line to the last six data points (years 0 to 5).

The Excel function `=logest` performs the fit. The resulting trend line represents a constant annual percent change over the period. An example is given below :

Example : Average Annual Change in Road Deaths

| Road deaths<br>- year ended March |      |       | %<br>Change |
|-----------------------------------|------|-------|-------------|
|                                   | A    | B     |             |
| 0                                 | 2003 | 1,716 |             |
| 1                                 | 2004 | 1,618 | -5.7%       |
| 2                                 | 2005 | 1,565 | -3.3%       |
| 3                                 | 2006 | 1,655 | 5.8%        |
| 4                                 | 2007 | 1,589 | -4.0%       |
| 5                                 | 2008 | 1,571 | -1.1%       |
| Average                           |      | =     | -1.2%       |



$$\text{Average annual growth} = \text{Index}(\text{Logest}(B1:B6, A1:A6), 1) - 1 = -1.2\%$$