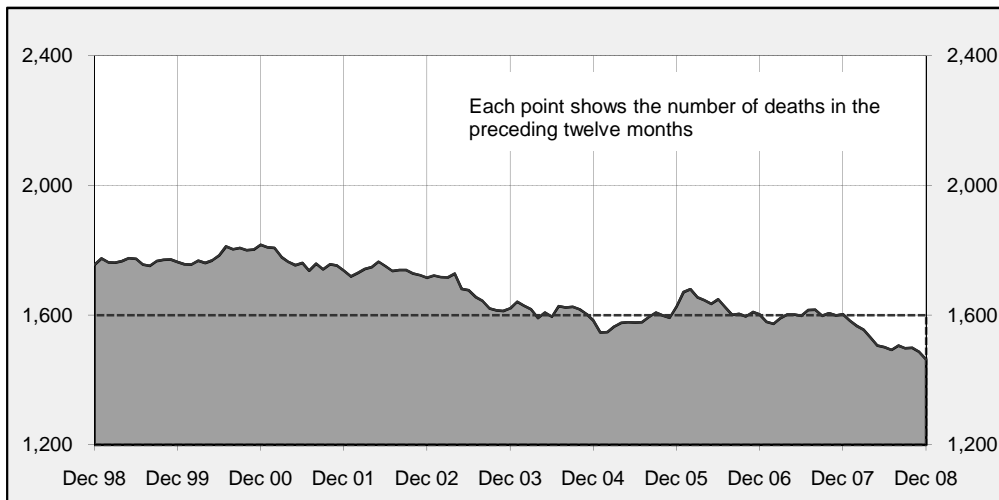




Australian road deaths for 12 months to date — last 10 years



Inquiries

For further information about data in this bulletin, contact:

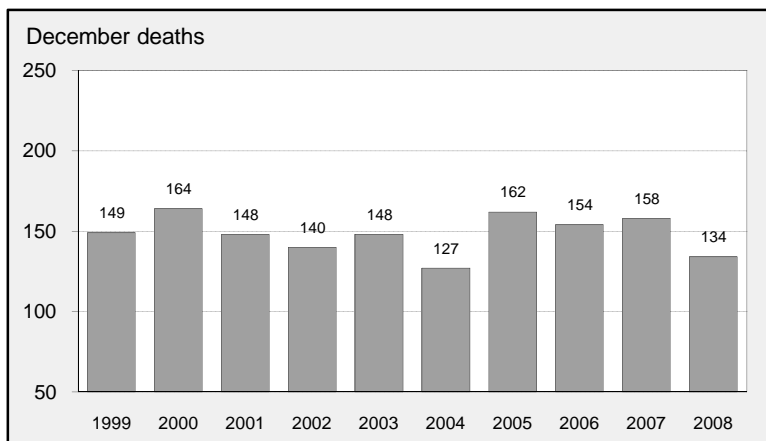
Strategy and Analysis Section
 Road Safety Branch
 GPO Box 594,
 Canberra, ACT 2601
 Email: roadsafety@infrastructure.gov.au
 Internet: www.infrastructure.gov.au

Data Sources

The data presented here are obtained from the following sources:

- Roads and Traffic Authority, NSW
 - Vicroads
 - Queensland Transport
 - Department for Transport, Energy and Infrastructure, South Australia
 - Western Australia Police
 - Department of Infrastructure, Energy and Resources, Tasmania
 - Department of Planning and Infrastructure, Northern Territory
 - Territory and Municipal Services, ACT
- Road deaths from recent months are preliminary and subject to revision.

Australian road deaths for December — last 10 years



This month's key figures

There was a total of 134 road deaths in December 2008.
 - this is a 15.2 per cent decrease from the December 2007 figure.

There have been 1,463 road deaths in 2008 to the end of December.
 - this is an 8.7 per cent decrease from the same 12 month period in 2007.

NUMBER OF ROAD CRASH DEATHS IN EACH STATE / TERRITORY

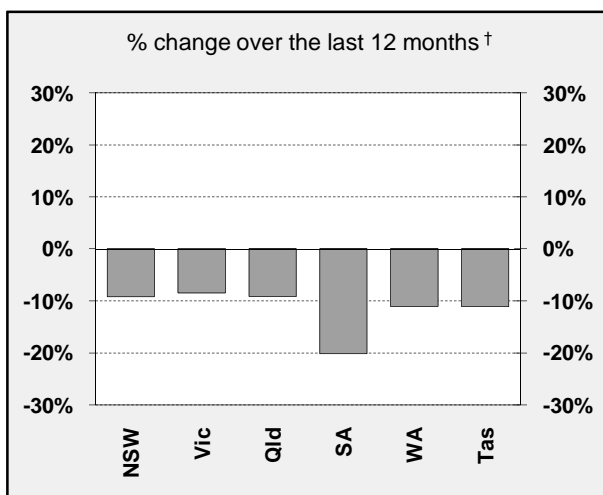
Road deaths by State/Territory

for current month, year to date, 12 months ended December, and five year trend

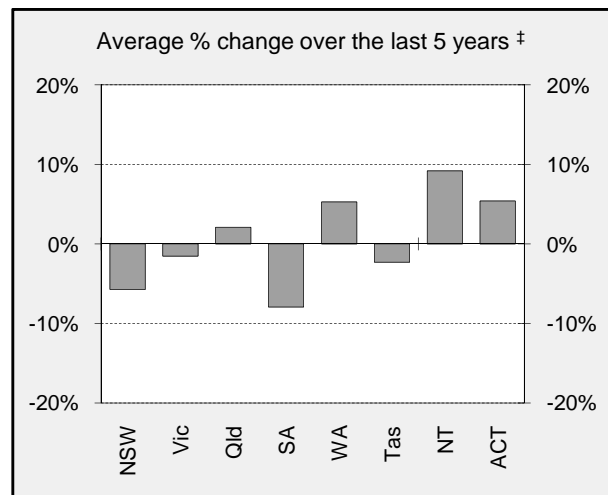
	NSW	Vic	Qld	SA	WA	Tas	NT	ACT	Australia
Current month									
Dec 2008	36	25	29	10	22	7	4	1	134
Dec 2007	37	41	25	14	26	4	10	1	158
% change	-2.7	-39.0	16.0	-28.6	-15.4	75.0	-60.0	0.0	-15.2
Year to date									
Jan 2008 - Dec 2008	395	304	327	99	209	40	75	14	1,463
Jan 2007 - Dec 2007	435	332	360	124	235	45	58	14	1,603
% change	-9.2	-8.4	-9.2	-20.2	-11.1	-11.1	29.3	0.0	-8.7
12-months to date									
Jan 2008 - Dec 2008	395	304	327	99	209	40	75	14	1,463
Jan 2007 - Dec 2007	435	332	360	124	235	45	58	14	1,603
Difference	-40	-28	-33	-25	-26	-5	17	0	-140
% change	-9.2	-8.4	-9.2	-20.2	-11.1	-11.1	29.3	0.0	-8.7
Average annual % change over 5 years^a									
YE December 2004 to YE December 2008	-5.7	-1.5	2.1	-7.9	5.3	-2.3	9.2	5.4	-1.4

^a Average annual percentage change based on the exponential trend for the last five 12-month periods

Percentage change in deaths in each State



[†] Percentage change between the two 12-month periods ending December 2008 and December 2007.
NT and ACT not shown.



[‡] Average annual percentage change based on the exponential trend from the year ending December 2003 to year ending December 2008.

NUMBER OF DEATHS IN EACH ROAD USER GROUP

Road deaths by road user group and gender

for 12 months ended December 2008, December 2007 and five year trend

	Drivers	Passengers	Pedestrians	Motor-cyclists ^a	Cyclists	All road users ^b
Males						
Jan 2008 - Dec 2008	516	172	132	229	25	1,076
Jan 2007 - Dec 2007	615	178	120	220	37	1,170
% change	-16.1	-3.4	10.0	4.1	-32.4	-8.0
Females						
Jan 2008 - Dec 2008	177	131	58	18	2	386
Jan 2007 - Dec 2007	168	159	84	17	4	432
% change	5.4	-17.6	-31.0	5.9	-50.0	-10.6
Persons^c						
Jan 2008 - Dec 2008	693	304	190	247	27	1,463
Jan 2007 - Dec 2007	784	337	204	237	41	1,603
% change	-11.6	-9.8	-6.9	4.2	-34.1	-8.7

Average annual % change over 5 years^d

YE December 2004

to YE December 2008

	-0.9	-5.2	-3.4	5.8	0.0	-1.4
--	------	------	------	-----	-----	------

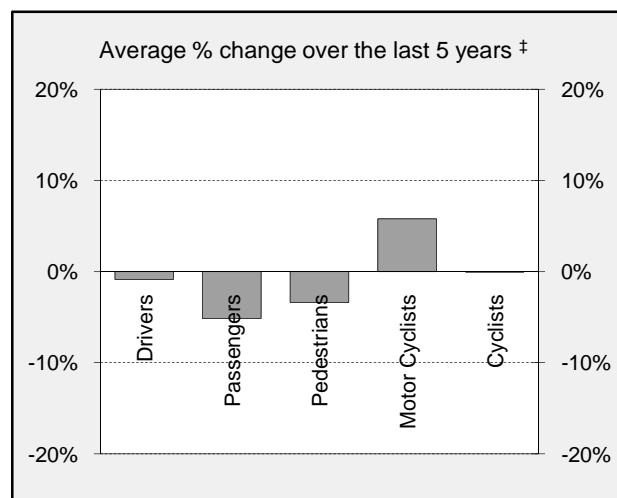
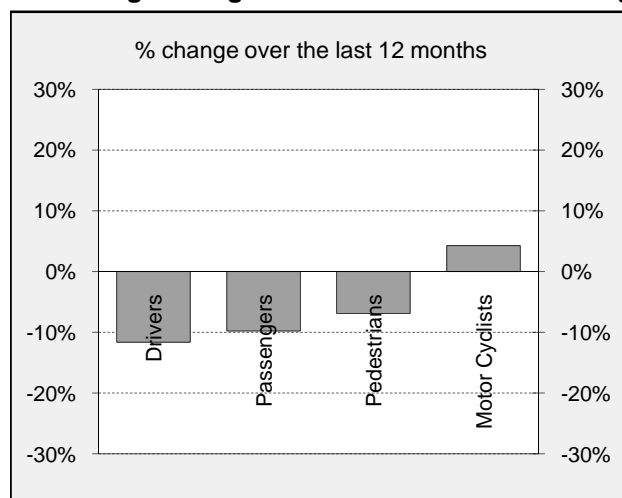
a Includes pillion passengers

b Includes road users not separately specified

c Includes road users with unstated gender

d Average annual percentage change based on the exponential trend for the last five 12-month periods

Percentage change in deaths in each road user group



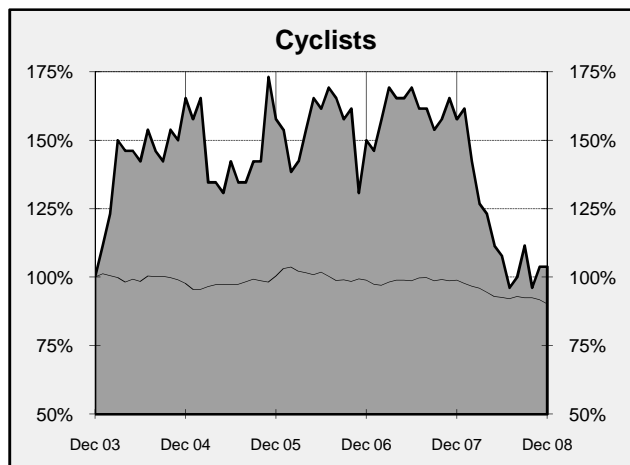
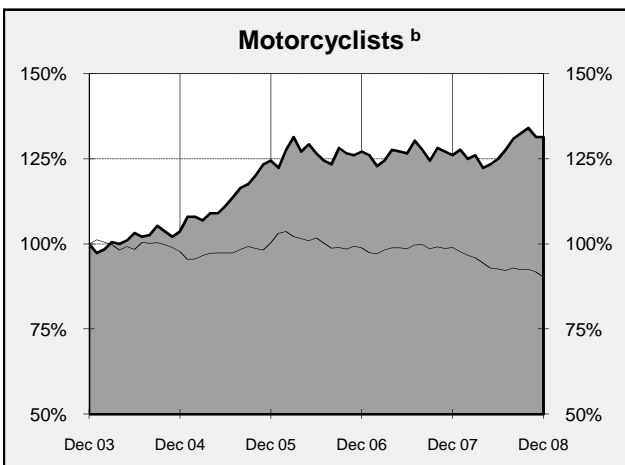
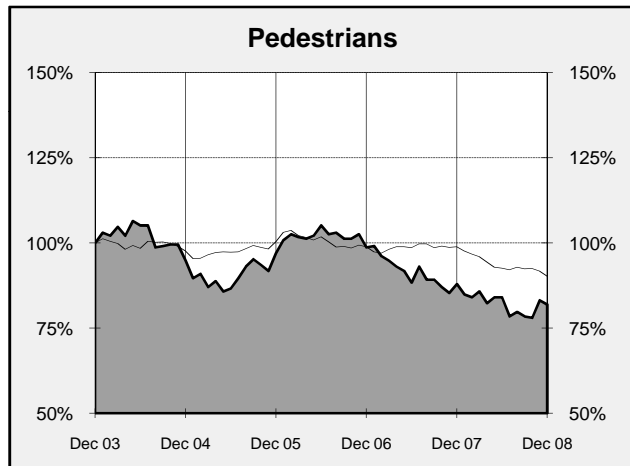
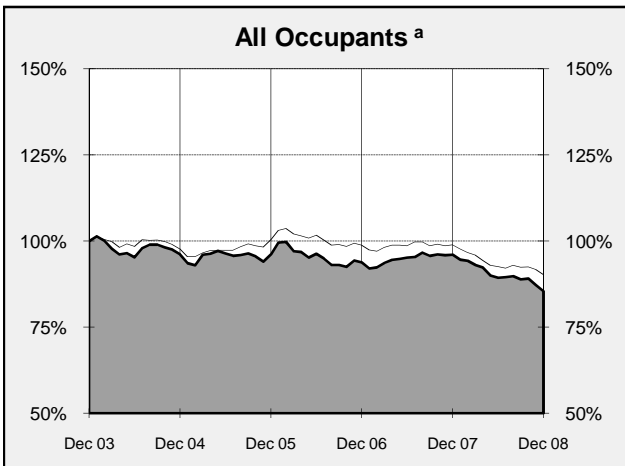
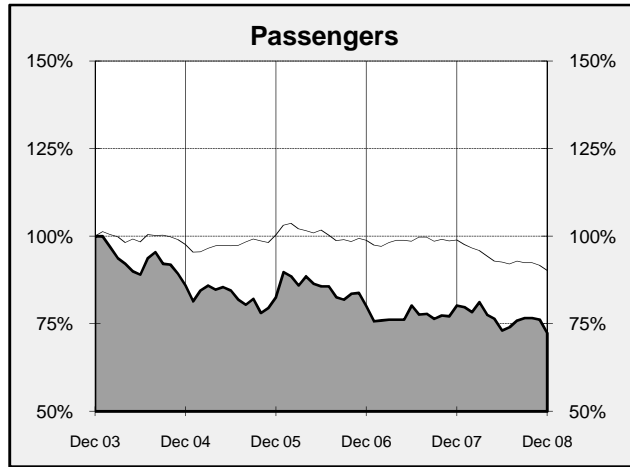
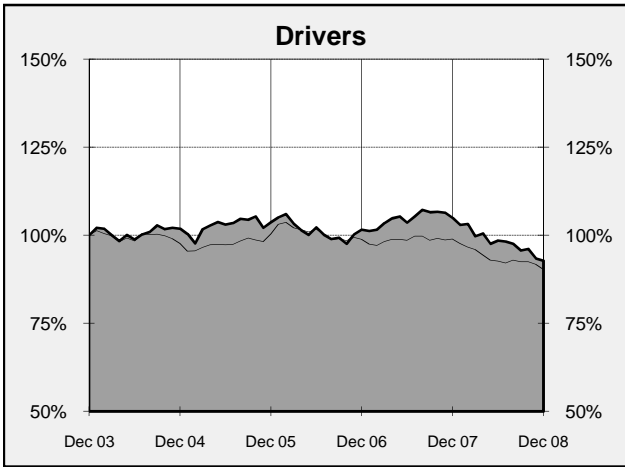
† Percentage change between the two 12-month periods ending December 2008 and December 2007. Cyclists not shown.

‡ Average annual percentage change based on the exponential trend from the year ending December 2003 to year ending December 2008.

DEATHS IN EACH ROAD USER GROUP - TRENDS

Annual deaths in each road user group - last 5 years

The number shown at each month represents the number of deaths in the preceding 12 months expressed as a percentage of the number of deaths in the 12 months to December 2003.



a Comprises drivers and passengers

b Includes pillion passengers

NUMBER OF FATAL ROAD CRASHES IN EACH STATE / TERRITORY

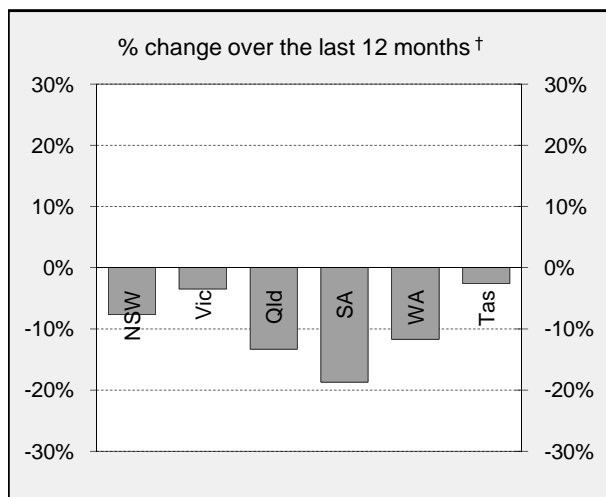
Fatal crashes by State/Territory

for current month, year to date, 12 months ended December, and five year trend.

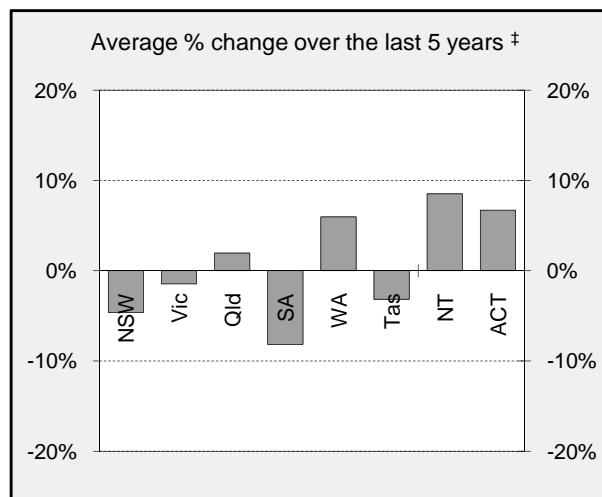
	NSW	Vic	Qld	SA	WA	Tas	NT	ACT	Australia
Current month									
Dec 2008	35	25	29	10	20	6	4	1	130
Dec 2007	32	32	24	13	23	4	5	1	134
% change	9.4	-21.9	20.8	-23.1	-13.0	50.0	-20.0	0.0	-3.0
Year to date									
Jan 2008 - Dec 2008	374	279	293	87	189	38	67	14	1,341
Jan 2007 - Dec 2007	405	289	338	107	214	39	47	14	1,453
% change	-7.7	-3.5	-13.3	-18.7	-11.7	-2.6	42.6	0.0	-7.7
12 months to date									
Jan 2008 - Dec 2008	374	279	293	87	189	38	67	14	1,341
Jan 2007 - Dec 2007	405	289	338	107	214	39	47	14	1,453
% change	-7.7	-3.5	-13.3	-18.7	-11.7	-2.6	42.6	0.0	-7.7
Average annual % change over 5 years^a									
YE December 2004 to YE December 2008	-4.7	-1.4	2.0	-8.1	6.0	-3.2	8.5	6.7	-1.0

^a Average annual percentage change based on the exponential trend for the last five 12-month periods

Percentage change in fatal crashes in each State



† Percentage change between the two 12-month periods ending December 2008 and December 2007. NT and ACT not shown.



‡ Average annual percentage change based on the exponential trend from the year ending December 2003 to year ending December 2008.

FATAL CRASHES INVOLVING TRUCKS OR BUSES

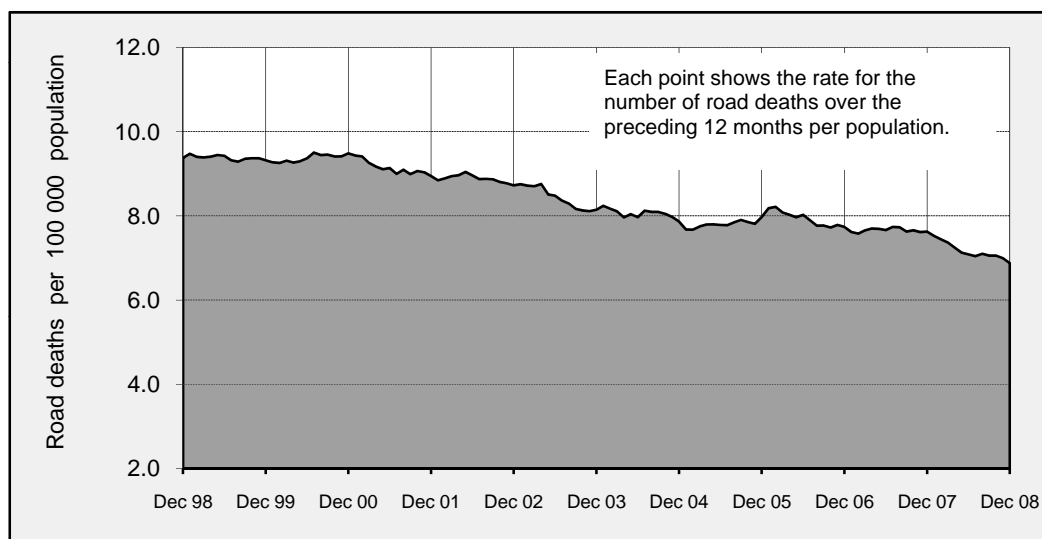
Analysis of fatal crashes involving heavy vehicles is now published in a separate quarterly bulletin.

ROAD DEATH RATES

Road deaths per 100,000 population

	NSW	Vic	Qld	SA	WA	Tas	NT	ACT	Australia
12-months to date									
Jan 2008 - Dec 2008	5.7	5.7	7.6	6.2	9.7	8.0	34.1	4.1	6.8
Jan 2007 - Dec 2007	6.3	6.4	8.6	7.8	11.2	9.1	27.0	4.1	7.6
Calendar year									
2008	5.7	5.7	7.6	6.2	9.7	8.0	34.1	4.1	6.8
2003	8.1	6.7	8.1	10.3	9.2	8.6	26.5	3.4	8.1

Australian road deaths per year per 100 000 population - moving 12-monthly data



CHARACTERISTICS OF FATAL CRASHES

Proportion (per cent) of fatal crashes by speed limit, crash type, time of day, and time of week.
Two years ended December 2008 and two years ended December 2003

	Speed limit (km/h) ^a			Time of Day	
	Up to 60	65-95	100+	Day	Night ^b
Jan 2007 - Dec 2008	31.9%	22.8%	45.3%	56.4%	43.6%
Jan 2002 - Dec 2003	31.0%	22.7%	46.4%	56.1%	43.9%
	Crash Type			Time of week	
	Pedestrian crash	Other single veh. Crash	Other multiple veh. crash	Week day	Week-end ^c
Jan 2007 - Dec 2008	14.0%	47.8%	38.2%	59.4%	40.6%
Jan 2002 - Dec 2003	15.9%	44.4%	39.7%	60.3%	39.7%

a Excludes ACT

b 6:00 pm to 5:59 am

c 6:00 pm Friday to 5:59 am Monday

ROAD DEATHS BY AGE, GENDER AND ROAD USER GROUP

Road deaths by age and gender for 12 months ended December 2008 and December 2007

	0-16 years	17-20 years	21-25 years	26-39 years	40-59 years	60+ years	All deaths ^a
Males							
Jan 2008 - Dec 2008	58	138	159	278	258	178	1,076
Jan 2007 - Dec 2007	56	158	149	329	293	181	1,170
% change	3.6	-12.7	6.7	-15.5	-11.9	-1.7	-8.0
Females							
Jan 2008 - Dec 2008	29	48	29	68	103	105	386
Jan 2007 - Dec 2007	45	43	41	78	97	124	432
% change	-35.6	11.6	-29.3	-12.8	6.2	-15.3	-10.6
Persons^b							
Jan 2008 - Dec 2008	88	186	188	346	361	283	1,463
Jan 2007 - Dec 2007	101	201	190	407	390	305	1,603
% change	-12.9	-7.5	-1.1	-15.0	-7.4	-7.2	-8.7

a Includes road users with unstated age

b Includes road users with unstated gender

Road deaths by age for each main road user group

	0-16 years	17-20 years	21-25 years	26-39 years	40-59 years	60+ years	All deaths ^a
Occupants^b							
Jan 2008 - Dec 2008	69	143	133	216	237	191	997
Jan 2007 - Dec 2007	66	166	133	271	254	224	1,121
% change	4.5	-13.9	0.0	-20.3	-6.7	-14.7	-11.1
Motorcyclists^c							
Jan 2008 - Dec 2008	2	26	34	89	75	20	247
Jan 2007 - Dec 2007	9	21	38	86	67	16	237
% change	-77.8	23.8	-10.5	3.5	11.9	25.0	4.2
Pedestrians							
Jan 2008 - Dec 2008	13	16	18	34	42	65	190
Jan 2007 - Dec 2007	18	12	17	39	53	63	204
% change	-27.8	33.3	5.9	-12.8	-20.8	3.2	-6.9

a Includes road users with unstated age

b Comprises drivers and passengers

c Includes pillion passengers

TIME SERIES - QUARTERLY SUPPLEMENT

Road deaths by road user group, 1994 to 2008

	<i>Drivers</i>	<i>Passengers</i>	<i>Pedestrians</i>	<i>Motor-cyclists^a</i>	<i>Cyclists</i>	<i>All road users^b</i>
1994	809	501	367	190	59	1,928
1995	874	491	398	204	48	2,017
1996	869	499	351	193	57	1,970
1997	776	431	328	177	52	1,767
1998	741	468	318	181	44	1,755
1999	820	428	299	176	40	1,764
2000	852	450	287	191	31	1,817
2001	776	407	290	216	46	1,737
2002	785	422	249	224	34	1,715
2003	747	420	232	188	26	1,621
2004	761	361	220	195	43	1,583
2005	775	347	225	234	41	1,627
2006	759	336	229	239	39	1,602
2007	784	337	204	237	41	1,603
2008	693	304	190	247	27	1,463

a Includes pillion passengers

b Includes road users not separately specified

Road deaths by State/Territory, 1994 to 2008

	<i>NSW</i>	<i>Vic</i>	<i>Qld</i>	<i>SA</i>	<i>WA</i>	<i>Tas</i>	<i>NT</i>	<i>ACT</i>	<i>Australia</i>
1994	646	377	418	159	211	59	41	17	1,928
1995	620	418	456	181	209	57	61	15	2,017
1996	581	417	385	181	247	64	72	23	1,970
1997	576	377	360	148	197	32	60	17	1,767
1998	556	390	279	168	223	48	69	22	1,755
1999	577	383	314	151	218	53	49	19	1,764
2000	603	407	317	166	212	43	51	18	1,817
2001	524	444	324	153	165	61	50	16	1,737
2002	561	397	322	154	179	37	55	10	1,715
2003	539	330	310	157	180	41	53	11	1,621
2004	510	343	311	139	178	58	35	9	1,583
2005	508	346	330	148	163	51	55	26	1,627
2006	496	337	335	117	203	55	46	13	1,602
2007	435	332	360	124	235	45	58	14	1,603
2008	395	304	327	99	209	40	75	14	1,463

DEATH RATES - QUARTERLY SUPPLEMENT

Road death rates by State/Territory

	<i>NSW</i>	<i>Vic</i>	<i>Qld</i>	<i>SA</i>	<i>WA</i>	<i>Tas</i>	<i>NT</i>	<i>ACT</i>	<i>Australia</i>
<i>Per capita^a</i>									
2008	5.67	5.74	7.64	6.12	9.66	8.03	33.64	4.07	6.84
2003	8.08	6.70	8.14	10.25	9.22	8.58	26.49	3.38	8.15
<i>Per vehicle^b</i>									
2008	0.87	0.78	1.03	0.84	1.20	1.02	6.10	0.58	0.96
2003	1.37	0.94	1.21	1.46	1.25	1.21	5.08	0.52	1.23

a Annual deaths per 100,000 population: 2008 at June 30 (preliminary data); 2003 at June 30 (revised data) taken from ABS catalogue 3201.0

b Annual deaths per 10,000 registered motor vehicles: 2007 at Mar 31; 2002 at Oct 31 taken from ABS catalogue 9309.0.

DEATHS BY AGE AND ROAD USER GROUP - QUARTERLY SUPPLEMENT

Road deaths by road user group and age

for 12 months ended December 2008, December 2007 and five year trend

	0-16 years	17-20 years	21-25 years	26-39 years	40-59 years	60+ years	All deaths ^d
Drivers							
Jan 2008 - Dec 2008	7	90	90	164	192	146	693
Jan 2007 - Dec 2007	5	107	93	216	212	148	784
% change	40.0	-15.9	-3.2	-24.1	-9.4	-1.4	-11.6
Ave annual % change ^a							
YE Dec 2003 to YE Dec 2008	-0.6	-1.9	-0.9	1.1	-1.3	-0.4	-0.5
Passengers							
Jan 2008 - Dec 2008	62	53	43	52	45	45	304
Jan 2007 - Dec 2007	61	59	40	55	42	76	337
% change	1.6	-10.2	7.5	-5.5	7.1	-40.8	-9.8
Ave annual % change ^a							
YE Dec 2003 to YE Dec 2008	-6.5	-7.3	-1.0	-6.4	-2.6	-4.5	-5.2
Pedestrians							
Jan 2008 - Dec 2008	13	16	18	34	42	65	190
Jan 2007 - Dec 2007	18	12	17	39	53	63	204
% change	-27.8	33.3	5.9	-12.8	-20.8	3.2	-6.9
Ave annual % change ^a							
YE Dec 2003 to YE Dec 2008	-3.5	-3.6	3.4	-0.6	-4.1	-4.8	-2.8
Motorcyclists^b							
Jan 2008 - Dec 2008	2	26	34	89	75	20	247
Jan 2007 - Dec 2007	9	21	38	86	67	16	237
% change	-77.8	23.8	-10.5	3.5	11.9	25.0	4.2
Ave annual % change ^a							
YE Dec 2003 to YE Dec 2008	11.4	-0.1	5.1	0.0	8.0	16.8	3.9
Cyclists							
Jan 2008 - Dec 2008	4	0	3	7	7	6	27
Jan 2007 - Dec 2007	8	2	2	11	16	2	41
All road users^c							
Jan 2008 - Dec 2008	88	186	188	346	361	283	1,463
Jan 2007 - Dec 2007	101	201	190	407	390	305	1,603
% change	-12.9	-7.5	-1.1	-15.0	-7.4	-7.2	-8.7
Ave annual % change ^a							
YE Dec 2003 to YE Dec 2008	-5.4	-3.8	0.4	-0.7	0.0	-1.9	-1.4

a This represents the average annual exponential change between the annual count of 5-years ago and the current annual count

b Includes pillion passengers

c Includes road users not separately classified

d Includes deaths with unstated age

DEATHS BY STATE / TERRITORY AND ROAD USER - QUARTERLY SUPPLEMENT

Road deaths by road user group and State/Territory for 12 months ended December 2008, December 2007 and five year trend

	NSW	Vic	Qld	SA	WA	Tas	NT	ACT	Australia
Drivers									
Jan 2008 - Dec 2008	214	140	140	46	106	20	24	3	693
Jan 2007 - Dec 2007	215	173	171	60	113	21	23	8	784
% change	-0.5	-19.1	-18.1	-23.3	-6.2	-4.8	4.3	-	-11.6
Ave annual % change ^a									
Dec 2003 to Dec 2008	-3.1	-1.6	2.7	-9.5	5.4	8.0	5.9	14.0	-0.5
Passengers									
Jan 2008 - Dec 2008	67	52	79	23	44	11	24	4	304
Jan 2007 - Dec 2007	77	67	64	36	61	11	19	2	337
% change	-13.0	-22.4	23.4	-36.1	-27.9	0.0	26.3	-	-9.8
Ave annual % change ^a									
Dec 2003 to Dec 2008	-11.6	-5.3	-3.1	-8.4	5.0	9.4	-5.7	-	-5.2
Pedestrians									
Jan 2008 - Dec 2008	49	59	30	12	19	1	17	3	190
Jan 2007 - Dec 2007	68	41	42	15	20	4	13	1	204
% change	-27.9	43.9	-28.6	-20.0	-5.0	-75.0	30.8	-	-6.9
Ave annual % change ^a									
Dec 2003 to Dec 2008	-8.3	2.4	-3.1	-5.5	-0.4	-10.5	20.3	8.2	-2.8
Motorcyclists^b									
Jan 2008 - Dec 2008	56	44	72	17	36	8	10	4	247
Jan 2007 - Dec 2007	61	45	73	8	37	7	3	3	237
% change	-8.2	-2.2	-1.4	112.5	-2.7	14.3	233.3	-	4.2
Ave annual % change ^a									
Dec 2003 to Dec 2008	-0.9	3.0	9.4	-7.4	9.8	-3.0	-	-	3.9
Cyclists									
Jan 2008 - Dec 2008	8	9	6	1	3	0	0	0	27
Jan 2007 - Dec 2007	14	6	10	5	4	2	0	0	41
All road users^c									
Jan 2008 - Dec 2008	395	304	327	99	209	40	75	14	1,463
Jan 2007 - Dec 2007	435	332	360	124	235	45	58	14	1,603
% change	-9.2	-8.4	-9.2	-20.2	-11.1	-11.1	29.3	0.0	-8.7
Ave annual % change ^a									
Dec 2003 to Dec 2008	-5.3	-1.4	1.7	-8.5	5.3	4.5	2.6	8.5	-1.4

^a This represents the average annual exponential change between the annual count of 5-years ago and the current annual count

^b Includes pillion passengers

^c Includes road users not separately classified

1. Definition

The road safety agencies in each jurisdiction use detailed criteria to define road crashes and road deaths. Briefly, a death is classified as resulting from a road crash if the crash occurred on a public road, and the death occurred within 30 days from injuries sustained in the crash. If it is determined that a crash was deliberate (for example suicide), the crash and deaths are excluded from this bulletin.

Road deaths from recent months are preliminary and subject to revision.

2. Other sources for the tables in this bulletin

The underlying database used to produce this bulletin is available for online querying and data extraction at

http://www.infrastructure.gov.au/roads/safety/road_fatality_statistics/fatal_road_crash_database.aspx

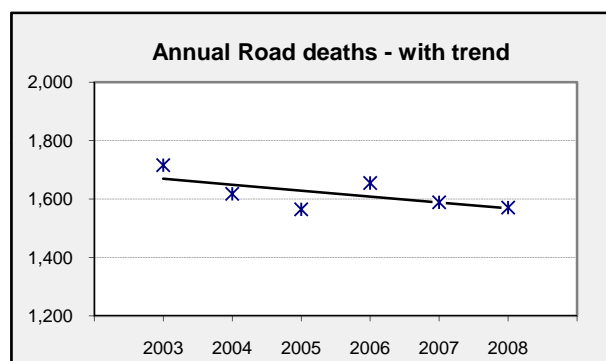
3. Estimation of five year trends

In this bulletin, the figures for the 'Average annual per cent change over 5 years' are calculated by fitting an exponential trend line to the last six data points (years 0 to 5).

The Excel function `=logest` performs the fit. The resulting trend line represents a constant annual percent change over the period. An example is given below :

Example : Average Annual Change in Road Deaths

Road deaths - year ended March			% Change
	A	B	
0	2003	1,716	
1	2004	1,618	-5.7%
2	2005	1,565	-3.3%
3	2006	1,655	5.8%
4	2007	1,589	-4.0%
5	2008	1,571	-1.1%
Average =			-1.2%



Average annual growth = $\text{Index}(\text{Logest}(B1:B6, A1:A6), 1) - 1 = -1.2\%$