



Australian Government

Department of Infrastructure,
Transport, Regional Development
and Local Government

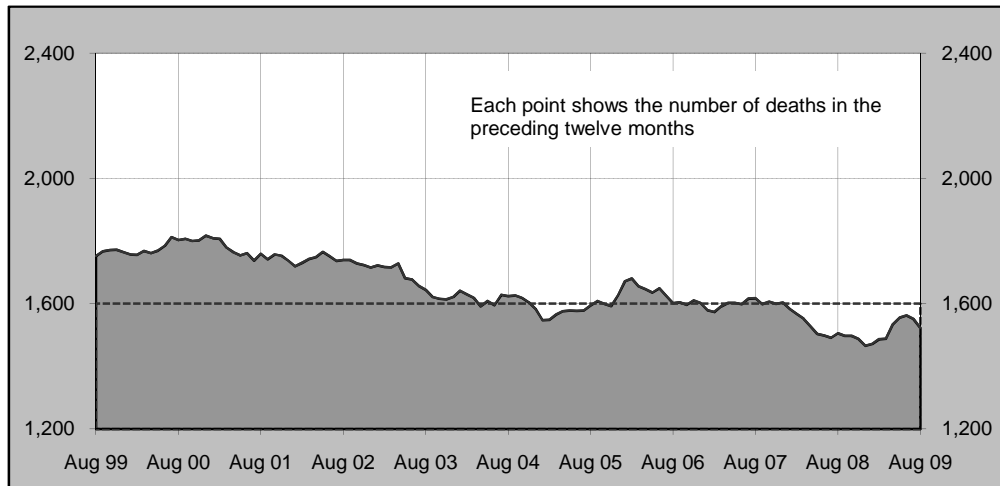
Road Deaths Australia

Monthly Bulletin

ISSN 1449-1168

August 2009

Australian road deaths for 12 months to date — last 10 years



Inquiries

For further information about data in this bulletin, contact:

Road Safety Policy
Department of Infrastructure, Transport,
Regional Development and Local Government
GPO Box 594,
Canberra, ACT 2601
Email: roadsafety@infrastructure.gov.au
Internet: www.infrastructure.gov.au

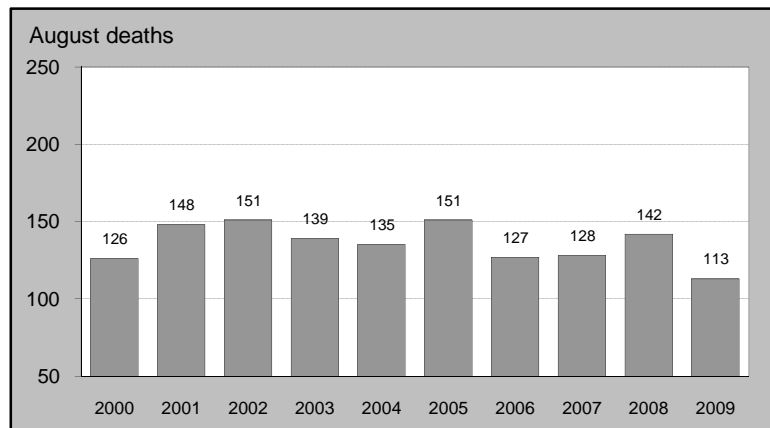
Data Sources

The data presented here are obtained from the following sources:

- Roads and Traffic Authority, NSW
- Vicroads
- Queensland Transport
- Department for Transport, Energy and Infrastructure, South Australia
- Western Australia Police
- Department of Infrastructure, Energy and Resources, Tasmania
- Department of Planning and Infrastructure, Northern Territory
- Territory and Municipal Services, ACT

- Road deaths from recent months are preliminary and subject to revision.

Australian road deaths for August — last 10 years



This month's key figures

There was a total of 113 road deaths in August 2009.
- this is a 20.4 per cent decrease from the August 2008 figure.

There have been 1,024 road deaths in 2009 to the end of August.
- this is a 5.9 per cent increase over the same 8 month period in 2008.

NUMBER OF ROAD CRASH DEATHS IN EACH STATE / TERRITORY

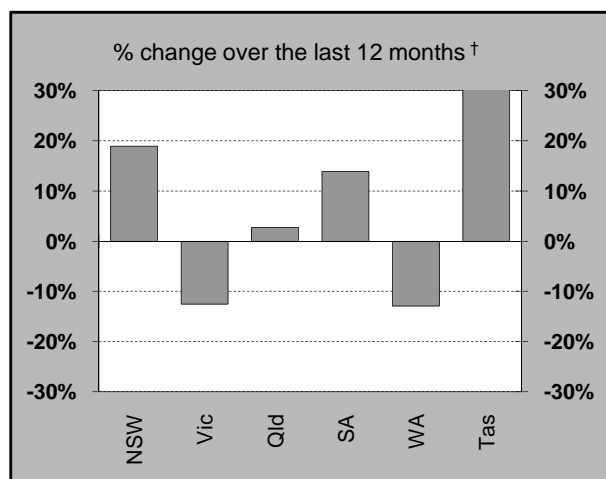
Road deaths by State/Territory

for current month, year to date, 12 months ended August, and five year trend

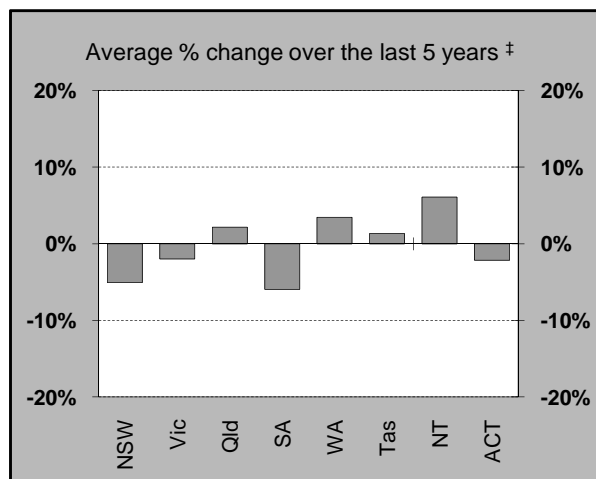
	NSW	Vic	Qld	SA	WA	Tas	NT	ACT	Australia
Current month									
Aug 2009	46	21	23	9	10	2	2	0	113
Aug 2008	37	27	34	11	19	1	10	3	142
% change	24.3	-22.2	-32.4	-18.2	-47.4	100.0	-80.0	-100.0	-20.4
Year to date									
Jan 2009 - Aug 2009	309	200	236	84	116	53	18	8	1,024
Jan 2008 - Aug 2008	247	209	224	60	136	30	49	12	967
% change	25.1	-4.3	5.4	40.0	-14.7	76.7	-63.3	-33.3	5.9
12-months to date									
Sep 2008 - Aug 2009	459	294	340	123	189	63	44	10	1,522
Sep 2007 - Aug 2008	386	336	331	108	217	38	74	15	1,505
Difference	73	-42	9	15	-28	25	-30	-5	17
% change	18.9	-12.5	2.7	13.9	-12.9	65.8	-40.5	-33.3	1.1
Average annual % change over 5 years^a									
YE August 2004 to YE August 2009	-5.1	-2.0	2.2	-5.9	3.5	1.3	6.1	-2.1	-1.4

^a Average annual percentage change based on the exponential trend for the last five 12-month periods

Percentage change in deaths in each State



† Percentage change between the two 12-month periods ending August 2009 and August 2008. NT and ACT not shown.



‡ Average annual percentage change based on the exponential trend from the year ending August 2004 to year ending August 2009.

NUMBER OF DEATHS IN EACH ROAD USER GROUP

Road deaths by road user group and gender
for 12 months ended August 2009, August 2008 and five year trend

	Drivers	Passengers	Pedestrians	Motor-cyclists ^a	Cyclists	All road users ^b
Males						
Sep 2008 - Aug 2009	516	188	150	235	31	1,121
Sep 2007 - Aug 2008	562	175	128	227	24	1,117
% change	-8.2	7.4	17.2	3.5	29.2	0.4
Females						
Sep 2008 - Aug 2009	176	140	62	14	6	398
Sep 2007 - Aug 2008	165	143	58	18	2	386
% change	6.7	-2.1	6.9	-22.2	200.0	3.1
Persons^c						
Sep 2008 - Aug 2009	693	330	212	249	37	1,522
Sep 2007 - Aug 2008	728	319	186	245	26	1,505
% change	-4.8	3.4	14.0	1.6	42.3	1.1
Average annual % change over 5 years^d						
YE August 2004 to YE August 2009	-1.6	-3.4	-2.8	4.8	-3.0	-1.4

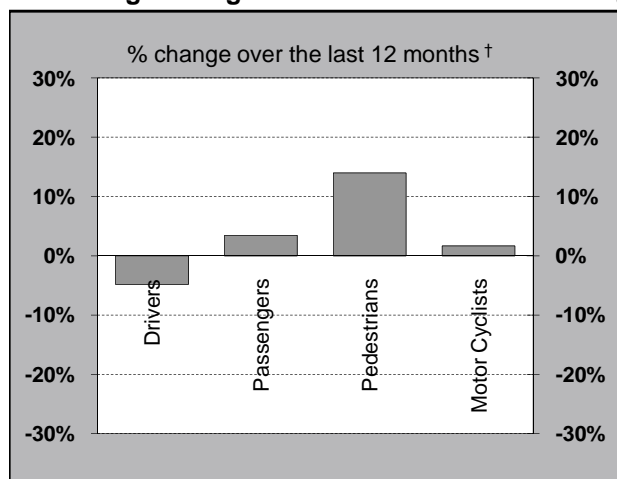
^a Includes pillion passengers

^b Includes road users not separately specified

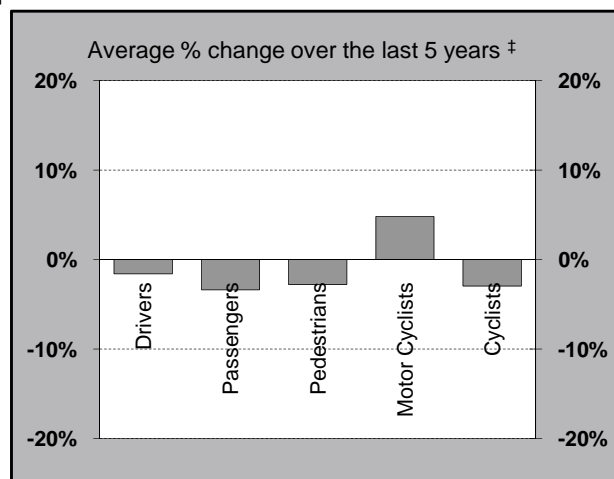
^c Includes road users with unstated gender

^d Average annual percentage change based on the exponential trend for the last five 12-month periods

Percentage change in deaths in each road user group



† Percentage change between the two 12-month periods ending August 2009 and August 2008.
Cyclists not shown.

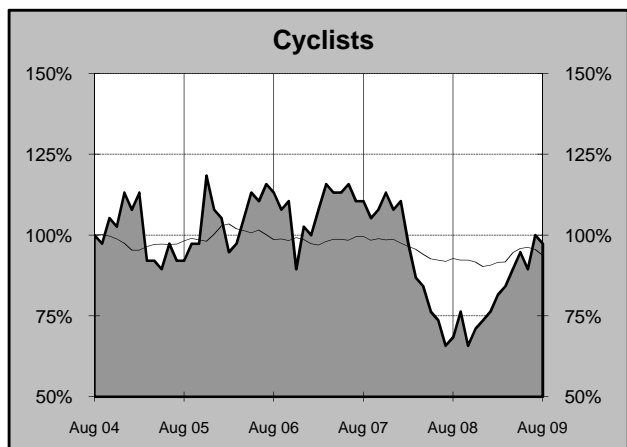
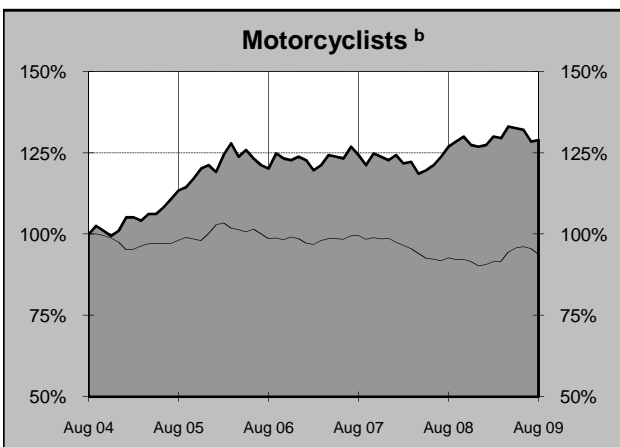
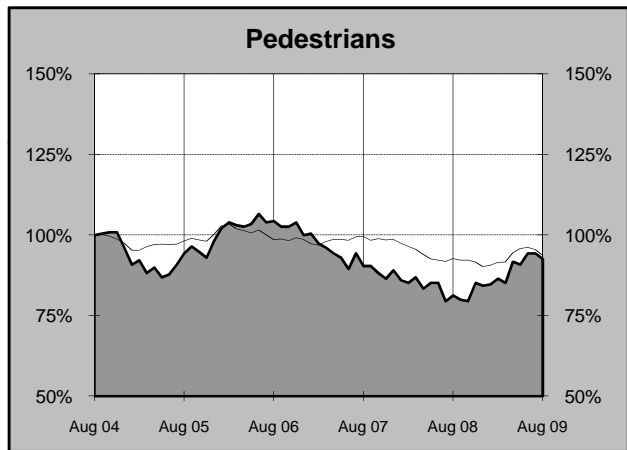
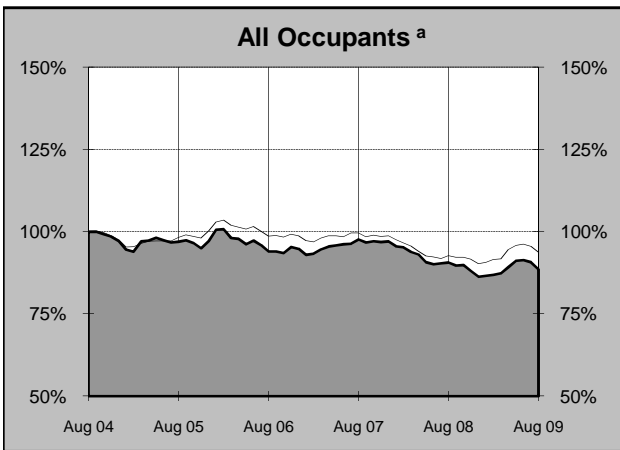
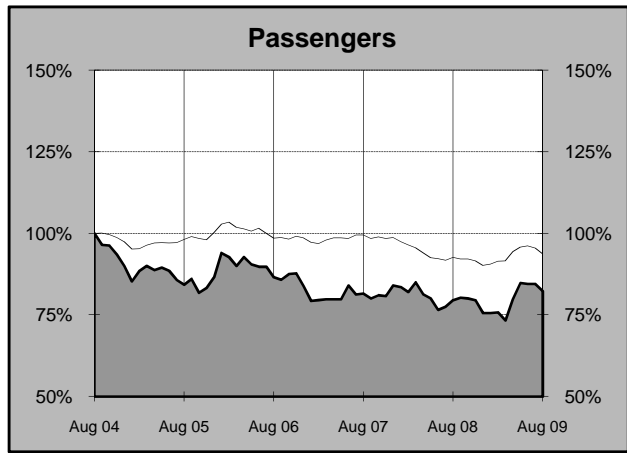
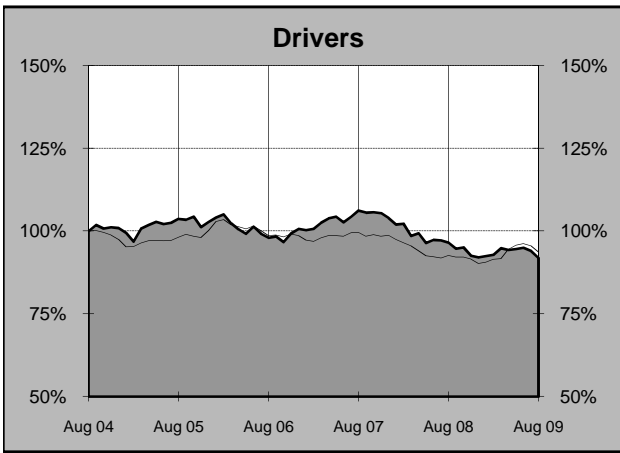
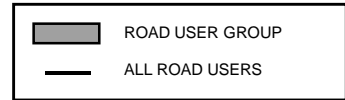


‡ Average annual percentage change based on the exponential trend from the year ending August 2004 to year ending August 2009.

DEATHS IN EACH ROAD USER GROUP - TRENDS

Annual deaths in each road user group - last 5 years

The number shown at each month represents the number of deaths in the preceding 12 months expressed as a percentage of the number of deaths in the 12 months to August 2004.



a Comprises drivers and passengers

b Includes pillion passengers

NUMBER OF FATAL ROAD CRASHES IN EACH STATE / TERRITORY

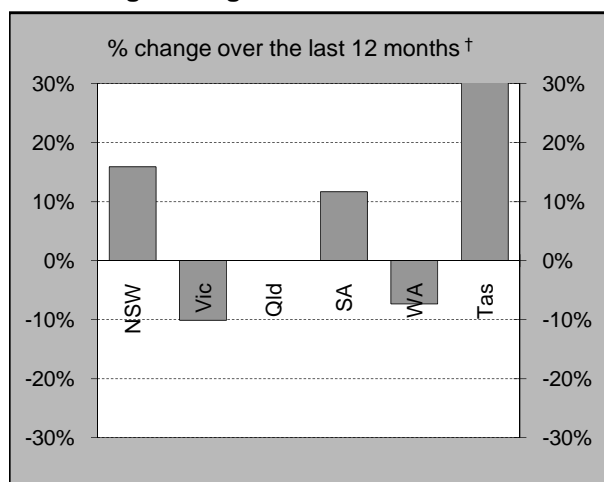
Fatal crashes by State/Territory

for current month, year to date, 12 months ended August, and five year trend.

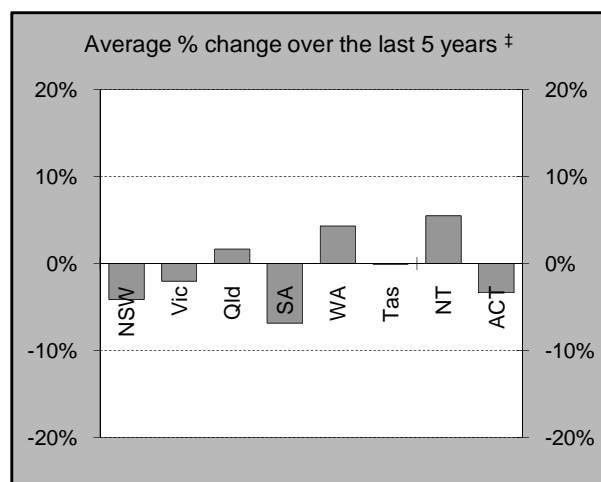
	NSW	Vic	Qld	SA	WA	Tas	NT	ACT	Australia
Current month									
Aug 2009	38	20	21	8	10	2	2	0	101
Aug 2008	36	24	32	8	17	1	8	3	129
% change	5.6	-16.7	-34.4	0.0	-41.2	100.0	-75.0	-100.0	-21.7
Year to date									
Jan 2009 - Aug 2009	283	179	205	71	109	42	18	7	914
Jan 2008 - Aug 2008	236	189	198	53	120	29	46	12	883
% change	19.9	-5.3	3.5	34.0	-9.2	44.8	-60.9	-41.7	3.5
12 months to date									
Sep 2008 - Aug 2009	423	268	301	105	178	51	39	9	1,374
Sep 2007 - Aug 2008	365	298	301	94	192	37	65	15	1,367
% change	15.9	-10.1	0.0	11.7	-7.3	37.8	-40.0	-40.0	0.5
Average annual % change over 5 years^a									
YE August 2004 to YE August 2009	-4.1	-2.0	1.7	-6.8	4.3	-0.1	5.5	-3.4	-1.3

^a Average annual percentage change based on the exponential trend for the last five 12-month periods

Percentage change in fatal crashes in each State



† Percentage change between the two 12-month periods ending August 2009 and August 2008. NT and ACT not shown.



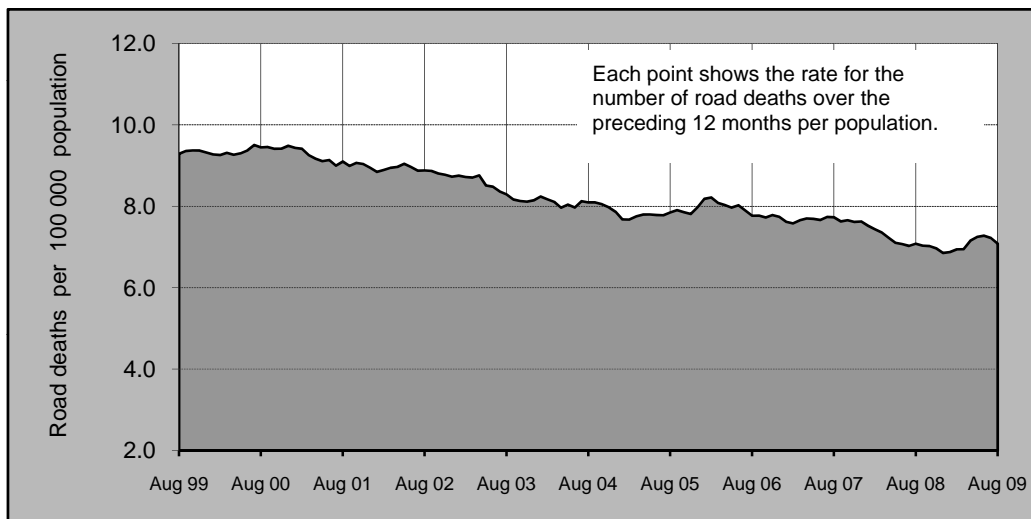
‡ Average annual percentage change based on the exponential trend from the year ending August 2004 to year ending August 2009.

ROAD DEATH RATES

Road deaths per 100,000 population

	NSW	Vic	Qld	SA	WA	Tas	NT	ACT	Australia
12-months to date									
Sep 2008 - Aug 2009	6.5	5.5	7.9	7.7	8.7	12.6	20.0	2.9	7.1
Sep 2007 - Aug 2008	5.6	6.4	7.8	6.8	10.1	7.6	33.9	4.4	7.1
Calendar year									
2008	5.7	5.7	7.7	6.2	9.7	8.0	34.1	4.1	6.9
2003	8.1	6.7	8.1	10.3	9.2	8.6	26.5	3.4	8.1

Australian road deaths per year per 100 000 population - moving 12-monthly data



CHARACTERISTICS OF FATAL CRASHES

Proportion (per cent) of fatal crashes by speed limit, crash type, time of day, and day of week. Two years ended August 2009 and two years ended August 2004

	Speed limit (km/h) ^a			Time of Day	
	Up to 60	65-95	100+	Day	Night ^b
Sep 2007 - Aug 2009	31.8%	23.8%	44.4%	56.7%	43.3%
Sep 2002 - Aug 2004	31.2%	22.6%	46.2%	56.1%	43.9%
	Crash Type			Day of week	
	Pedestrian crash	Other single veh. Crash	Other multiple veh. crash	Week day	Week-end ^c
Sep 2007 - Aug 2009	14.3%	48.6%	37.1%	60.2%	39.8%
Sep 2002 - Aug 2004	15.4%	44.5%	40.0%	59.9%	40.1%

^a Excludes ACT

^b 6:00 pm to 5:59 am

^c 6:00 pm Friday to 5:59 am Monday

ROAD DEATHS BY AGE, GENDER AND ROAD USER GROUP

Road deaths by age and gender
for 12 months ended August 2009 and August 2008

	0-16 years	17-20 years	21-25 years	26-39 years	40-59 years	60+ years	All deaths ^a
Males							
Sep 2008 - Aug 2009	62	142	159	293	277	184	1,121
Sep 2007 - Aug 2008	55	153	160	290	277	179	1,117
% change	12.7	-7.2	-0.6	1.0	0.0	2.8	0.4
Females							
Sep 2008 - Aug 2009	42	56	34	71	97	97	398
Sep 2007 - Aug 2008	32	48	33	65	104	104	386
% change	31.3	16.7	3.0	9.2	-6.7	-6.7	3.1
Persons^b							
Sep 2008 - Aug 2009	107	198	193	364	374	281	1,522
Sep 2007 - Aug 2008	88	201	193	355	381	283	1,505
% change	21.6	-1.5	0.0	2.5	-1.8	-0.7	1.1

a Includes road users with unstated age

b Includes road users with unstated gender

Road deaths by age for each main road user group

	0-16 years	17-20 years	21-25 years	26-39 years	40-59 years	60+ years	All deaths ^a
Occupants^b							
Sep 2008 - Aug 2009	79	156	146	219	227	193	1,023
Sep 2007 - Aug 2008	66	160	139	227	253	199	1,047
% change	19.7	-2.5	5.0	-3.5	-10.3	-3.0	-2.3
Motorcyclists^c							
Sep 2008 - Aug 2009	3	21	32	95	83	15	249
Sep 2007 - Aug 2008	3	26	36	85	77	18	245
% change	0.0	-19.2	-11.1	11.8	7.8	-16.7	1.6
Pedestrians							
Sep 2008 - Aug 2009	21	20	13	41	52	63	212
Sep 2007 - Aug 2008	15	13	16	38	41	62	186
% change	40.0	53.8	-18.8	7.9	26.8	1.6	14.0

a Includes road users with unstated age

b Comprises drivers and passengers

c Includes pillion passengers

1. Definition

The road safety agencies in each jurisdiction use detailed criteria to define road crashes and road deaths. Briefly, a death is classified as resulting from a road crash if the crash occurred on a public road, is unintentional and the death occurred within 30 days from injuries sustained in the crash.

Road deaths from recent months are preliminary and subject to revision.

2. Other sources for the tables in this bulletin

The underlying database used to produce this bulletin is available for online querying and data extraction at

http://www.infrastructure.gov.au/roads/safety/road_fatality_statistics/fatal_road_crash_database.aspx

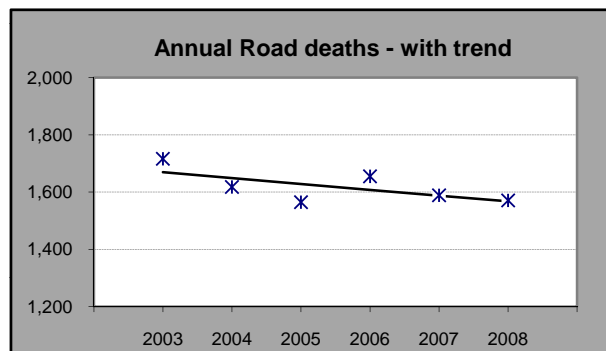
3. Estimation of five year trends

In this bulletin, the figures for the 'Average annual per cent change over 5 years' are calculated by fitting an exponential trend line to the last six data points (years 0 to 5).

The Excel function `—logest—` performs the fit. The resulting trend line represents a constant annual percent change over the period. An example is given below :

Example : Average Annual Change in Road Deaths

Road deaths - year ended March			% Change
	A	B	
0	2003	1,716	
1	2004	1,618	-5.7%
2	2005	1,565	-3.3%
3	2006	1,655	5.8%
4	2007	1,589	-4.0%
5	2008	1,571	-1.1%
Average =			-1.2%



Average annual growth = $\text{Index}(\text{Logest}(B1:B6, A1:A6), 1) - 1 = -1.2\%$