



Australian Government

Department of Infrastructure,
Transport, Regional Development
and Local Government

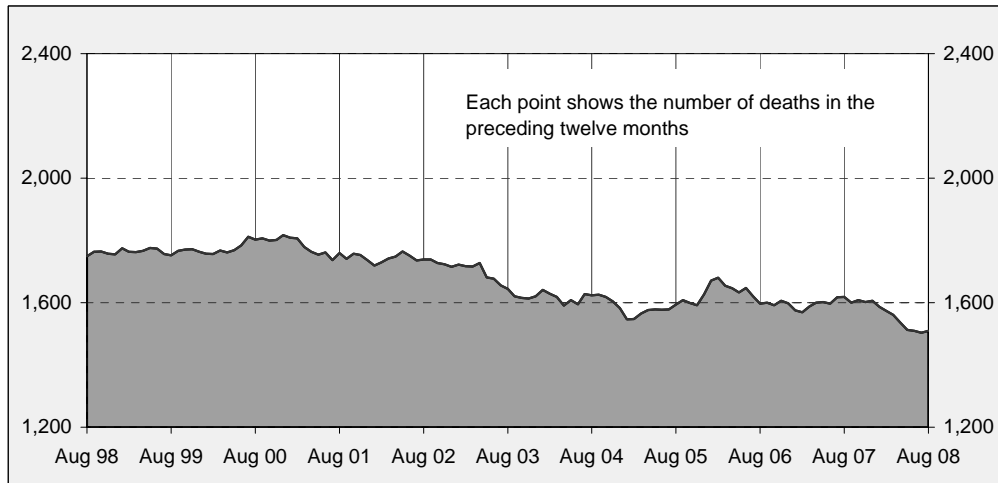
Road Deaths Australia

Monthly Bulletin

ISSN 1449-1168

August 2008

Australian road deaths for 12 months to date — last 10 years



Inquiries

For further information about data in this bulletin, contact:

Strategy and Analysis Section
Road Safety Branch
GPO Box 594,
Canberra, ACT 2601
Email: roadsafety@infrastructure.gov.au
Internet: www.infrastructure.gov.au

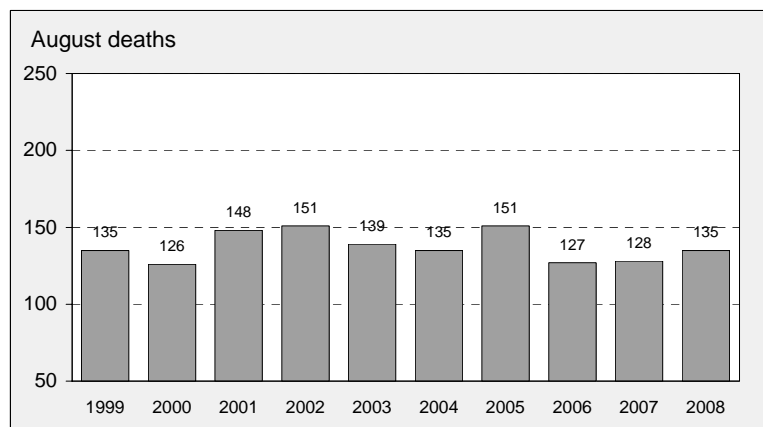
Data Sources

The data presented here are obtained from the following sources:

- Roads and Traffic Authority, NSW
- Vicroads
- Queensland Transport
- Department for Transport, Energy and Infrastructure, South Australia
- Western Australia Police
- Department of Infrastructure, Energy and Resources, Tasmania
- Department of Planning and Infrastructure, Northern Territory
- Territory and Municipal Services, ACT

- Road deaths from recent months are preliminary and subject to revision.

Australian road deaths for August — last 10 years



This month's key figures

There was a total of 135 road deaths in August 2008.
- this is a 5.5 per cent increase over the August 2007 figure.

There have been 970 road deaths in 2008 to the end of August.
- this is a 9.0 per cent decrease from the same 8 month period in 2007.

NUMBER OF ROAD CRASH DEATHS IN EACH STATE / TERRITORY

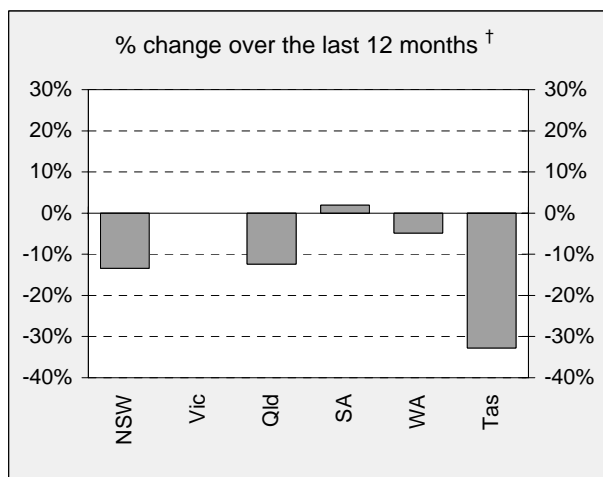
Road deaths by State/Territory

for current month, year to date, 12 months ended August, and five year trend

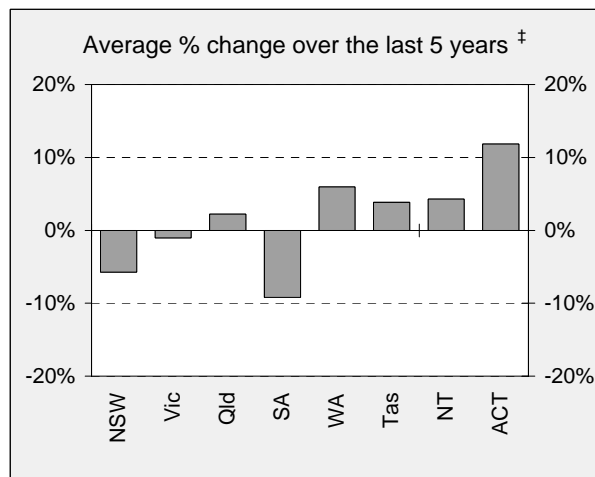
	NSW	Vic	Qld	SA	WA	Tas	NT	ACT	Australia
Current month									
Aug 2008	33	26	34	11	18	1	10	2	135
Aug 2007	30	20	37	11	20	2	6	2	128
% change	10.0	30.0	-8.1	0.0	-10.0	-50.0	66.7	0.0	5.5
Year to date									
Jan 2008 - Aug 2008	246	212	225	60	135	31	49	12	970
Jan 2007 - Aug 2007	298	206	253	76	154	37	31	11	1,066
% change	-17.4	2.9	-11.1	-21.1	-12.3	-16.2	58.1	9.1	-9.0
12-months to date									
Sep 2007 - Aug 2008	387	339	332	108	216	39	74	15	1,510
Sep 2006 - Aug 2007	447	339	379	106	227	58	44	18	1,618
Difference	-60	0	-47	2	-11	-19	30	-3	-108
% change	-13.4	0.0	-12.4	1.9	-4.8	-32.8	68.2	-16.7	-6.7
Average annual % change over 5 years^a									
YE August 2003 to YE August 2008	-5.7	-1.0	2.2	-9.2	5.9	3.9	4.3	11.8	-1.2

^a Average annual percentage change based on the exponential trend for the last five 12-month periods.

Percentage change in deaths in each State



[†] Percentage change between the two 12-month periods ending August 2008 and August 2007. NT and ACT not shown.



[‡] Average annual percentage change based on the exponential trend from the year ending August 2003 to year ending August 2008.

NUMBER OF DEATHS IN EACH ROAD USER GROUP

Road deaths by road user group and gender
for 12 months ended August 2008, August 2007 and five year trend

	Drivers	Passengers	Pedestrians	Motor-cyclists ^a	Cyclists	All road users ^b
Males						
Sep 2007 - Aug 2008	570	174	126	226	25	1,123
Sep 2006 - Aug 2007	617	181	123	223	38	1,182
% change	-7.6	-3.9	2.4	1.3	-34.2	-5.0
	-7.6	-3.9	2.4	1.3	-34.2	-5.0
Females						
Sep 2007 - Aug 2008	166	142	57	18	2	385
Sep 2006 - Aug 2007	185	147	83	17	4	436
% change	-10.3	-3.4	-31.3	5.9	-50.0	-11.7
Persons^c						
Sep 2007 - Aug 2008	737	317	183	244	27	1,510
Sep 2006 - Aug 2007	802	328	206	240	42	1,618
% change	-8.1	-3.4	-11.2	1.7	-35.7	-6.7
Average annual % change over 5 years^d						
YE August 2003 to YE August 2008	-0.3	-5.1	-3.8	5.1	-2.6	-1.2

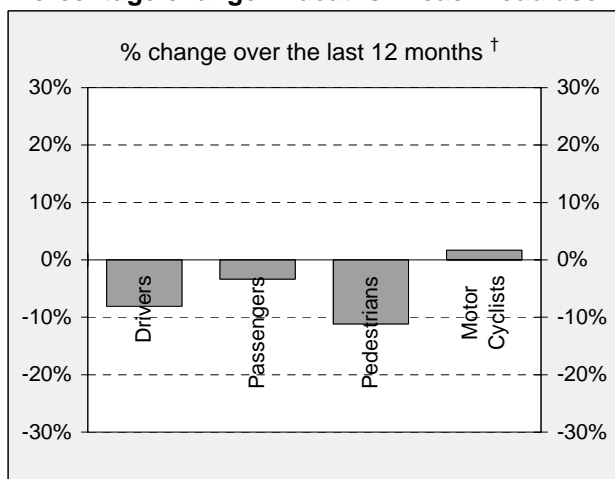
a Includes pillion passengers

b Includes road users not separately specified

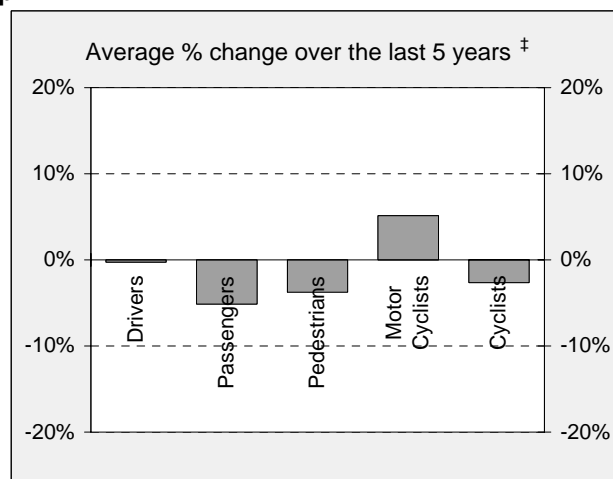
c Includes road users with unstated gender

d Average annual percentage change based on the exponential trend for the last five 12-month period:

Percentage change in deaths in each road user group



† Percentage change between the two 12-month periods ending August 2008 and August 2007. Cyclists not shown.

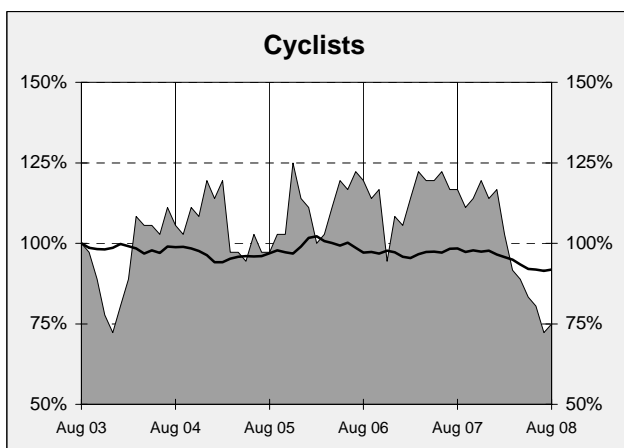
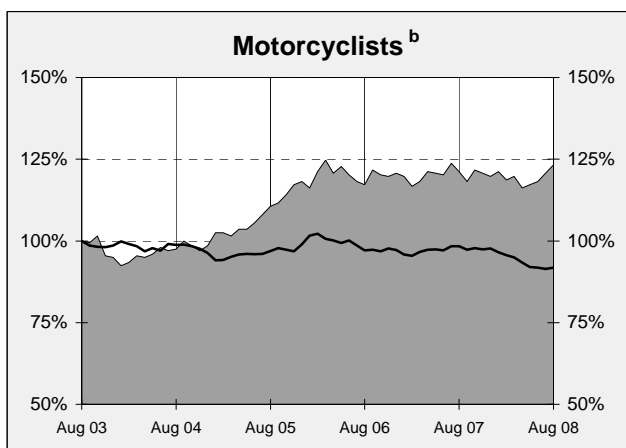
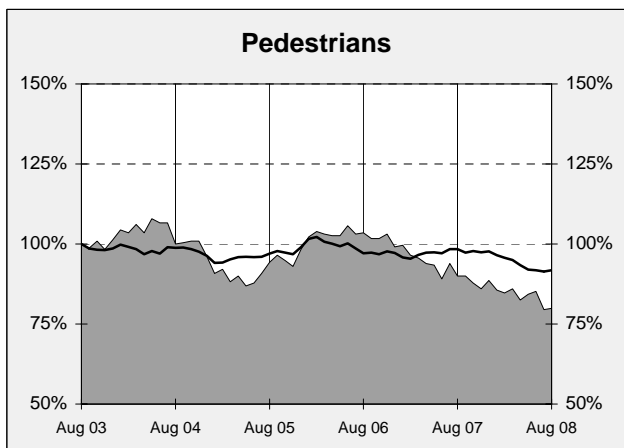
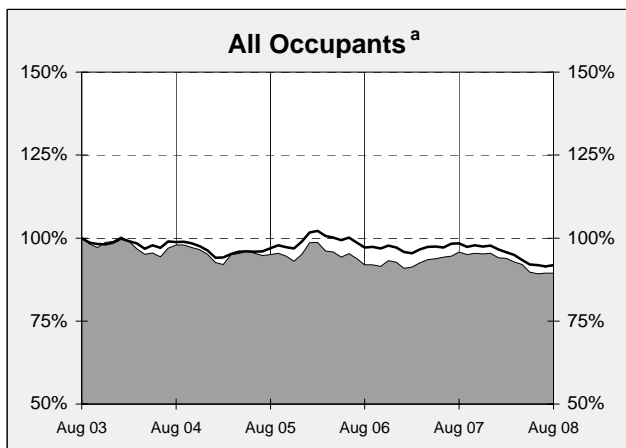
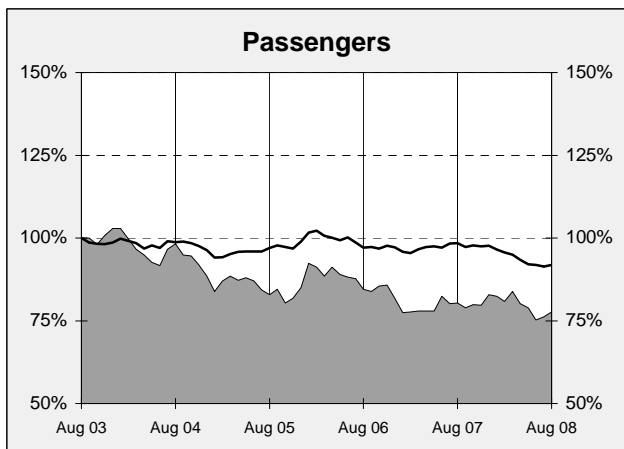
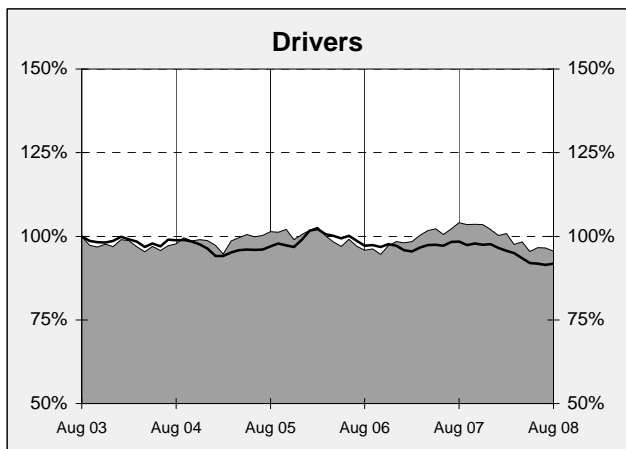
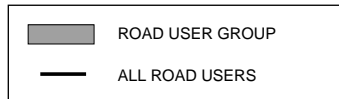


‡ Average annual percentage change based on the exponential trend from the year ending August 2003 to year ending August 2008.

DEATHS IN EACH ROAD USER GROUP - TRENDS

Annual deaths in each road user group - last 5 years

The number shown at each month represents the number of deaths in the preceding 12 months expressed as a percentage of the number of deaths in the 12 months to August 2003.



a Comprises drivers and passengers

b Includes pillion passengers

NUMBER OF FATAL ROAD CRASHES IN EACH STATE / TERRITORY

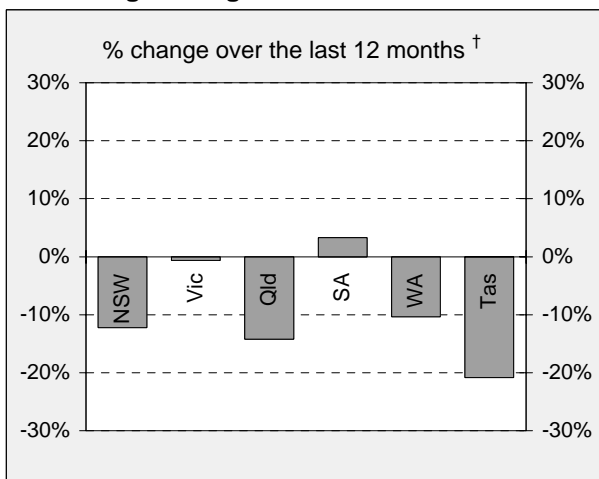
Fatal crashes by State/Territory

for current month, year to date, 12 months ended August, and five year trend.

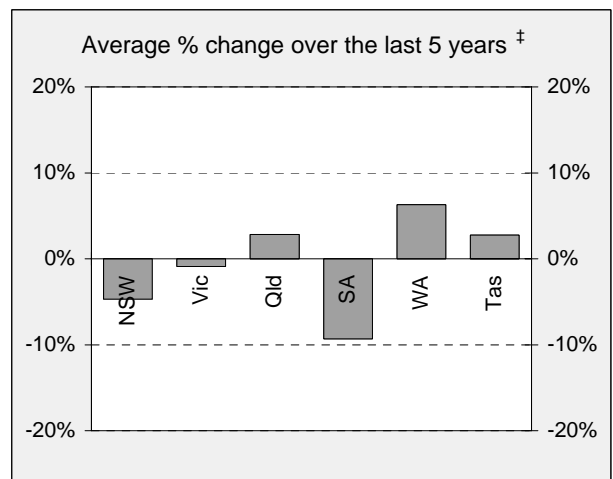
	NSW	Vic	Qld	SA	WA	Tas	NT	ACT	Australia
Current month									
Aug 2008	32	24	32	8	16	1	8	2	123
Aug 2007	30	18	35	9	15	2	4	2	115
% change	6.7	33.3	-8.6	-11.1	6.7	-50.0	100.0	0.0	7.0
Year to date									
Jan 2008 - Aug 2008	235	193	199	53	119	30	46	12	887
Jan 2007 - Aug 2007	278	181	235	66	142	31	27	11	971
% change	-15.5	6.6	-15.3	-19.7	-16.2	-3.2	70.4	9.1	-8.7
12 months to date									
Sep 2007 - Aug 2008	366	302	302	94	191	38	65	15	1,373
Sep 2006 - Aug 2007	417	304	352	91	213	48	39	17	1,481
% change	-12.2	-0.7	-14.2	3.3	-10.3	-20.8	66.7	-11.8	-7.3
Average annual % change over 5 years^a									
YE August 2003 to YE August 2008	-4.7	-0.9	2.8	-9.3	6.3	2.7	5.9	13.3	-0.7

a Average annual percentage change based on the exponential trend for the last five 12-month periods

Percentage change in fatal crashes in each State



† Percentage change between the two 12-month periods ending August 2008 and August 2007.
NT and ACT not shown.



‡ Average annual percentage change based on the exponential trend from the year ending August 2003 to year ending August 2008.

FATAL CRASHES INVOLVING TRUCKS OR BUSES

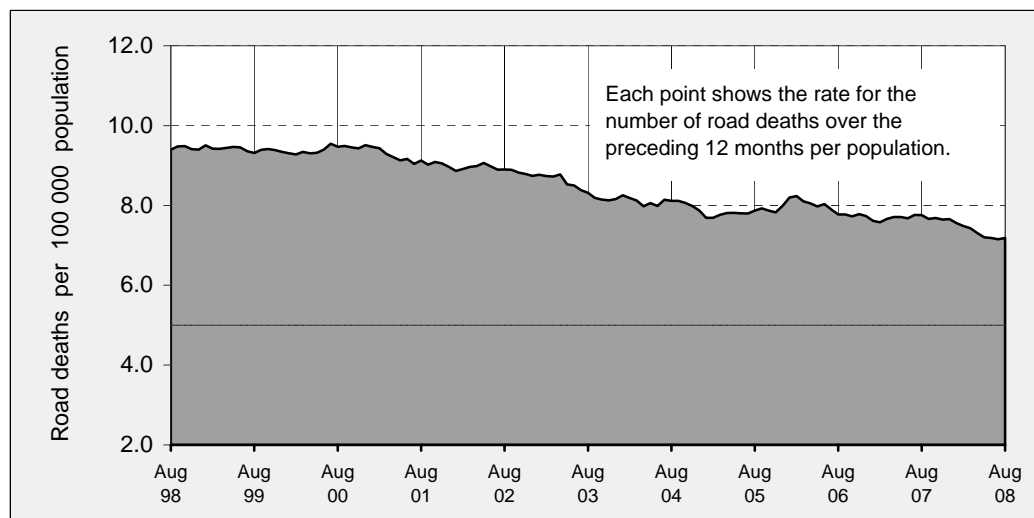
Analysis of fatal crashes involving heavy vehicles is now published in a separate quarterly bulletin.

ROAD DEATH RATES

Road deaths per 100 000 population

	NSW	Vic	Qld	SA	WA	Tas	NT	ACT	Australia
12-months to date									
Sep 2007 - Aug 2008	5.6	6.5	7.8	6.8	10.1	7.9	34.0	4.4	7.1
Sep 2006 - Aug 2007	6.5	6.5	9.1	6.7	10.9	11.8	20.6	5.3	7.7
Calendar year									
2007	6.4	6.4	8.6	7.8	11.2	9.1	26.1	4.1	7.6
2002	8.5	8.2	8.7	10.1	9.3	7.8	27.6	3.1	8.7

Australian road deaths per year per 100 000 population - moving 12-monthly data



CHARACTERISTICS OF FATAL CRASHES

Proportion (per cent) of fatal crashes by speed limit, crash type, time of day, and time of week. Two years ended August 2008 and two years ended August 2003

	Speed limit (km/h)^a			Time of Day	
	<i>Up to 60</i>	<i>65-95</i>	<i>100+</i>	<i>Day</i>	<i>Night^b</i>
Sep 2006 - Aug 2008	31.8%	22.0%	46.2%	56.5%	43.5%
Sep 2001 - Aug 2003	31.1%	22.2%	46.7%	56.1%	43.9%
	Crash Type			Time of week	
	<i>Pedestrian crash</i>	<i>Other single veh. Crash</i>	<i>Other multiple veh. crash</i>	<i>Week day</i>	<i>Week-end^c</i>
Sep 2006 - Aug 2008	13.6%	47.9%	38.5%	57.9%	42.1%
Sep 2001 - Aug 2003	16.4%	44.0%	39.6%	59.9%	40.1%

^a Excludes ACT

^b 6:00 pm to 5:59 am

^c 6:00 pm Friday to 5:59 am Monday

ROAD DEATHS BY AGE, GENDER AND ROAD USER GROUP

Road deaths by age and gender

for 12 months ended August 2008 and August 2007

	0-16 years	17-20 years	21-25 years	26-39 years	40-59 years	60+ years	All deaths ^a
Males							
Sep 2007 - Aug 2008	55	152	161	289	280	181	1,123
Sep 2006 - Aug 2007	62	154	152	336	280	196	1,182
% change	-11.3	-1.3	5.9	-14.0	0.0	-7.7	-5.0
Females							
Sep 2007 - Aug 2008	31	48	33	64	105	101	385
Sep 2006 - Aug 2007	45	49	48	74	98	118	436
% change	-31.1	-2.0	-31.3	-13.5	7.1	-14.4	-11.7
Persons^b							
Sep 2007 - Aug 2008	87	200	194	353	385	282	1,510
Sep 2006 - Aug 2007	107	203	200	410	378	314	1,618
% change	-18.7	-1.5	-3.0	-13.9	1.9	-10.2	-6.7

a Includes road users with unstated age

b Includes road users with unstated gender

Road deaths by age for each main road user group

	0-16 years	17-20 years	21-25 years	26-39 years	40-59 years	60+ years	All deaths ^a
Occupants^b							
Sep 2007 - Aug 2008	65	159	139	225	258	200	1,054
Sep 2006 - Aug 2007	71	171	138	273	244	228	1,130
% change	-8.5	-7.0	0.7	-17.6	5.7	-12.3	-6.7
Motorcyclists^c							
Sep 2007 - Aug 2008	3	26	36	85	76	18	244
Sep 2006 - Aug 2007	9	15	44	91	69	12	240
% change	-66.7	73.3	-18.2	-6.6	10.1	50.0	1.7
Pedestrians							
Sep 2007 - Aug 2008	15	13	17	38	40	59	183
Sep 2006 - Aug 2007	20	15	15	36	48	71	206
% change	-25.0	-13.3	13.3	5.6	-16.7	-16.9	-11.2

a Includes road users with unstated age

b Comprises drivers and passengers

c Includes pillion passengers

1. Definition

The road safety agencies in each jurisdiction use detailed criteria to define road crashes and road deaths. Briefly, a death is classified as resulting from a road crash if the crash occurred on a public road, and the death occurred within 30 days from injuries sustained in the crash. If it is determined that a crash was deliberate (for example suicide), the crash and deaths are excluded from this bulletin.

Road deaths from recent months are preliminary and subject to revision.

2. Other sources for the tables in this bulletin

The underlying database used to produce this bulletin is available for online querying and data extraction at

http://www.infrastructure.gov.au/roads/safety/road_fatality_statistics/fatal_road_crash_database.aspx

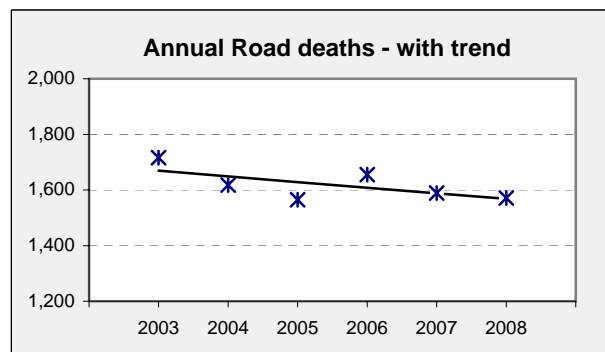
3. Estimation of five year trends

In this bulletin, the figures for the 'Average annual per cent change over 5 years' are calculated by fitting an exponential trend line to the last six data points (years 0 to 5).

The Excel function `—logest—` performs the fit. The resulting trend line represents a constant annual percent change over the period. An example is given below :

Example : Average Annual Change in Road Deaths

Road deaths - year ended March			
	A	B	% Change
0	2003	1,716	
1	2004	1,618	-5.7%
2	2005	1,565	-3.3%
3	2006	1,655	5.8%
4	2007	1,589	-4.0%
5	2008	1,571	-1.1%
Average =			-1.2%



Average annual growth = $\text{Index}(\text{Logest}(B1:B6, A1:A6), 1) - 1 = -1.2\%$