



Australian Government

Department of Infrastructure,
Transport, Regional Development
and Local Government

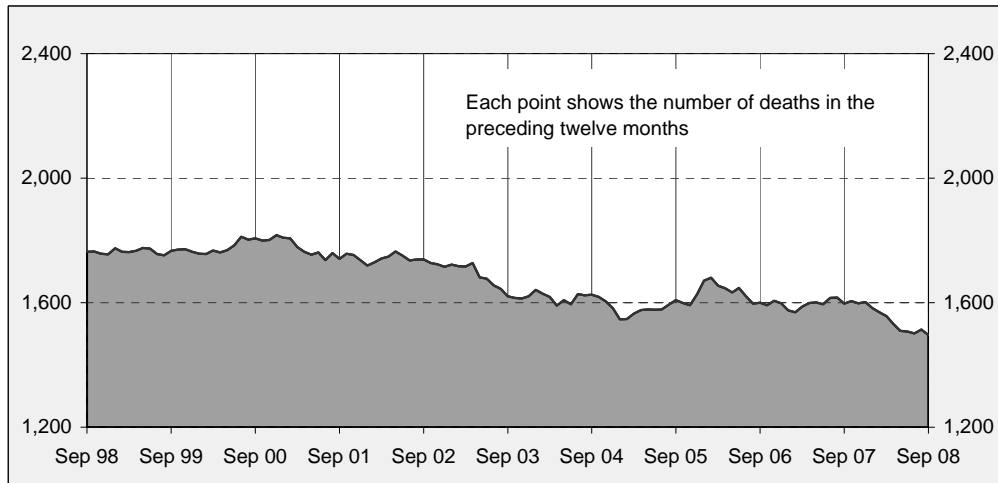
Road Deaths Australia

Monthly Bulletin

ISSN 1449-1168

September 2008

Australian road deaths for 12 months to date — last 10 years



Inquiries

For further information about data in this bulletin, contact:

Strategy and Analysis Section
Road Safety Branch
GPO Box 594,
Canberra, ACT 2601
Email: roadsafety@infrastructure.gov.au
Internet: www.infrastructure.gov.au

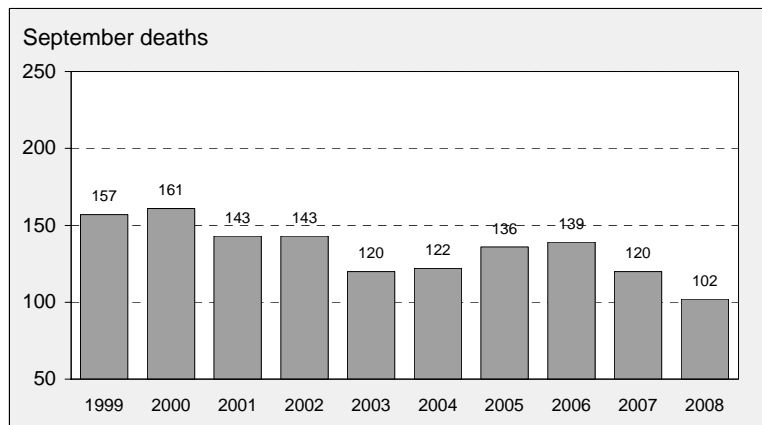
Data Sources

The data presented here are obtained from the following sources:

- Roads and Traffic Authority, NSW
- Vicroads
- Queensland Transport
- Department for Transport, Energy and Infrastructure, South Australia
- Western Australia Police
- Department of Infrastructure, Energy and Resources, Tasmania
- Department of Planning and Infrastructure, Northern Territory
- Territory and Municipal Services, ACT

• Road deaths from recent months are preliminary and subject to revision.

Australian road deaths for September — last 10 years



This month's key figures

There was a total of 102 road deaths in September 2008.
- this is a 15.0 per cent decrease from the September 2007 figure.

There have been 1,078 road deaths in 2008 to the end of September.
- this is a 9.0 per cent decrease from the same 9 month period in 2007.

NUMBER OF ROAD CRASH DEATHS IN EACH STATE / TERRITORY

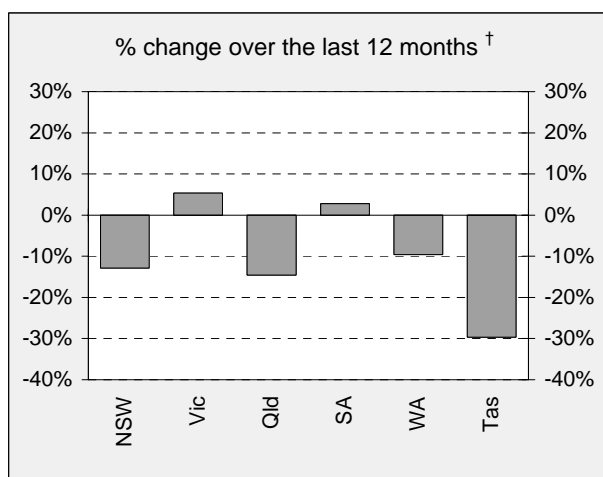
Road deaths by State/Territory

for current month, year to date, 12 months ended September, and five year trend

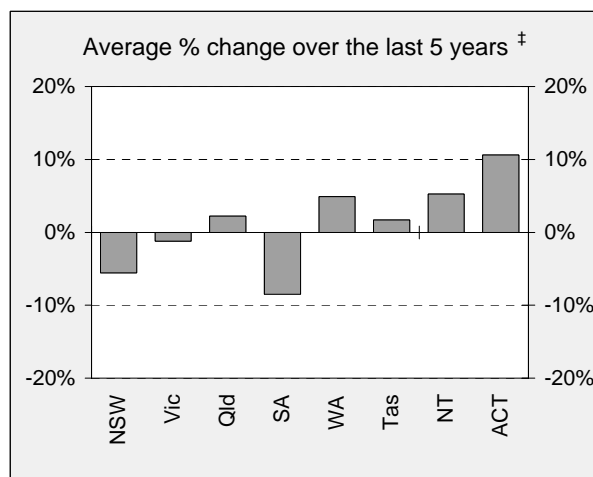
	NSW	Vic	Qld	SA	WA	Tas	NT	ACT	Australia
Current month									
Sep 2008	29	19	23	13	10	0	7	1	102
Sep 2007	32	23	31	10	19	1	4	0	120
% change	-9.4	-17.4	-25.8	30.0	-47.4	-100.0	75.0	-	-15.0
Year to date									
Jan 2008 - Sep 2008	280	232	247	73	146	31	56	13	1,078
Jan 2007 - Sep 2007	328	229	284	86	173	38	35	11	1,184
% change	-14.6	1.3	-13.0	-15.1	-15.6	-18.4	60.0	18.2	-9.0
12-months to date									
Oct 2007 - Sep 2008	387	336	323	111	208	38	77	16	1,496
Oct 2006 - Sep 2007	444	319	378	108	230	54	47	17	1,597
Difference	-57	17	-55	3	-22	-16	30	-1	-101
% change	-12.8	5.3	-14.6	2.8	-9.6	-29.6	63.8	-5.9	-6.3
Average annual % change over 5 years^a									
YE September 2003 to YE September 2008	-5.5	-1.2	2.2	-8.5	4.9	1.7	5.3	10.6	-1.3

^a Average annual percentage change based on the exponential trend for the last five 12-month periods

Percentage change in deaths in each State



[†] Percentage change between the two 12-month periods ending September 2008 and September 2007. NT and ACT not shown.



[‡] Average annual percentage change based on the exponential trend from the year ending September 2003 to year ending September 2008.

NUMBER OF DEATHS IN EACH ROAD USER GROUP

Road deaths by road user group and gender

for 12 months ended September 2008, September 2007 and five year trend

	Drivers	Passengers	Pedestrians	Motor-cyclists ^a	Cyclists	All road users ^b
Males						
Oct 2007 - Sep 2008	551	174	120	231	26	1,103
Oct 2006 - Sep 2007	616	173	122	217	36	1,164
% change	-10.6	0.6	-1.6	6.5	-27.8	-5.2
	-10.6	0.6	-1.6	6.5	-27.8	-5.2
Females						
Oct 2007 - Sep 2008	167	144	61	17	3	392
Oct 2006 - Sep 2007	179	148	84	17	4	432
% change	-6.7	-2.7	-27.4	0.0	-25.0	-9.3
Persons^c						
Oct 2007 - Sep 2008	718	319	181	248	29	1,496
Oct 2006 - Sep 2007	796	321	206	234	40	1,597
% change	-9.8	-0.6	-12.1	6.0	-27.5	-6.3

Average annual % change over 5 years^d

YE September 2003

to YE September 2008

-0.5 -5.0 -3.9 5.1 -1.7 -1.3

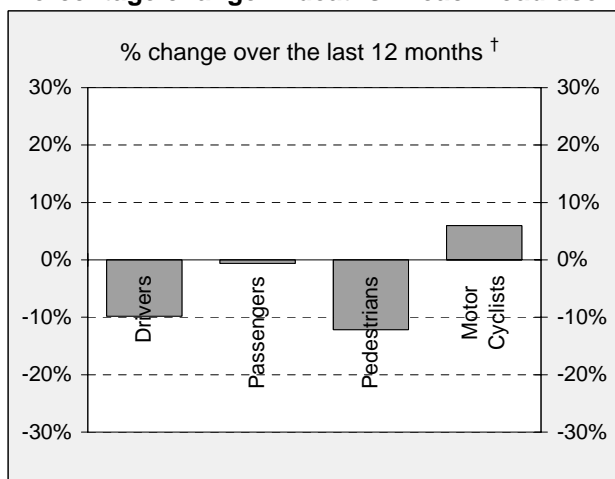
^a Includes pillion passengers

^b Includes road users not separately specified

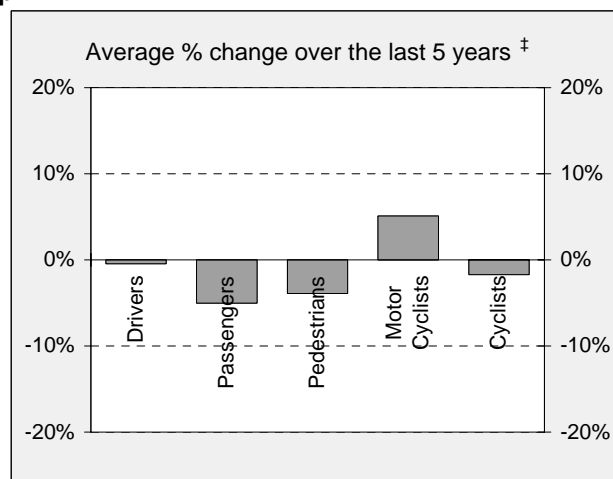
^c Includes road users with unstated gender

^d Average annual percentage change based on the exponential trend for the last five 12-month periods

Percentage change in deaths in each road user group



[†] Percentage change between the two 12-month periods ending September 2008 and September 2007. Cyclists not shown.

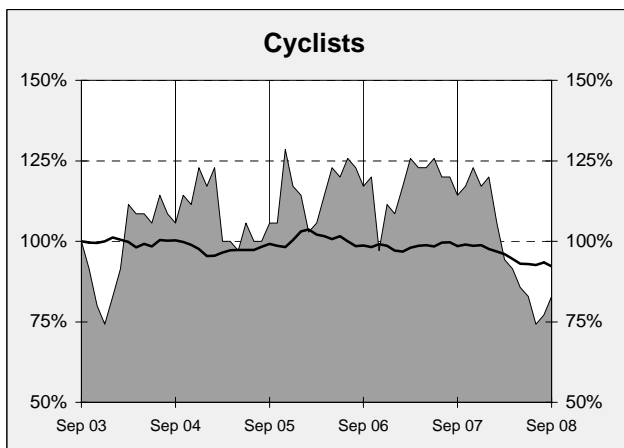
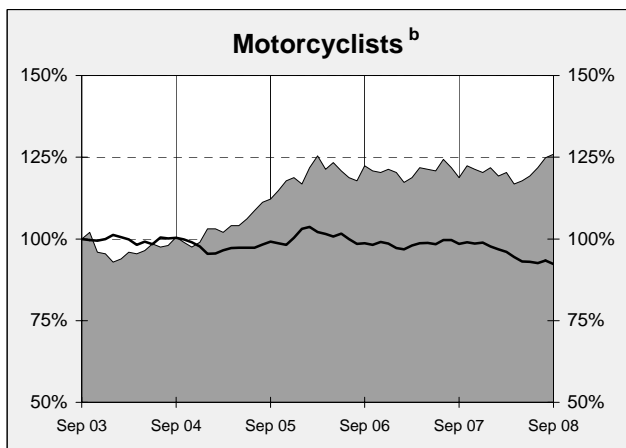
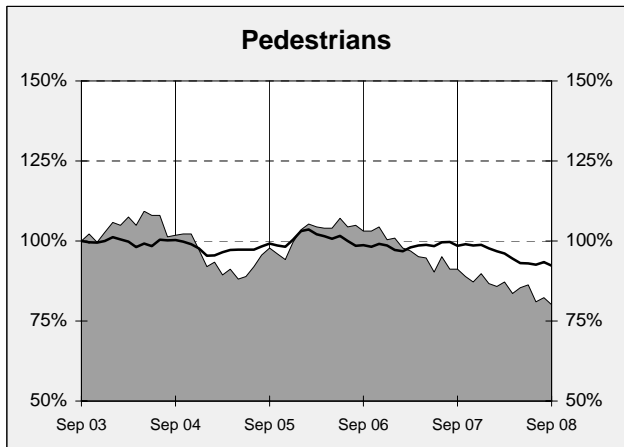
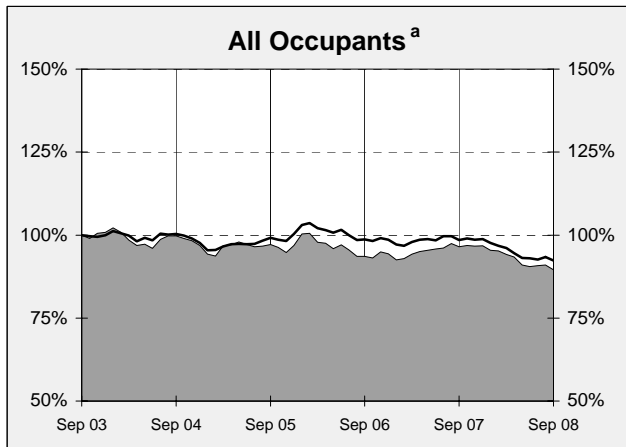
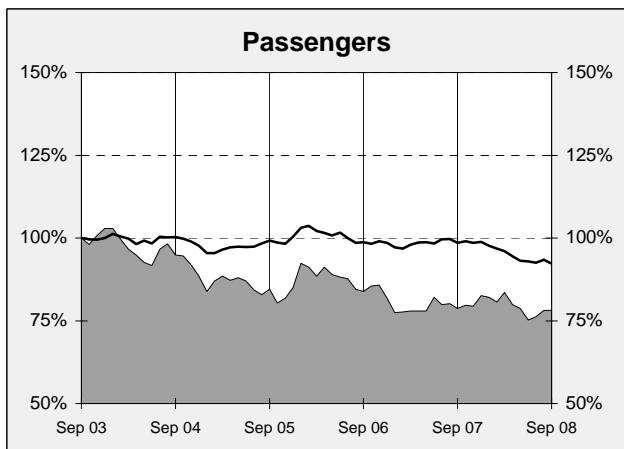
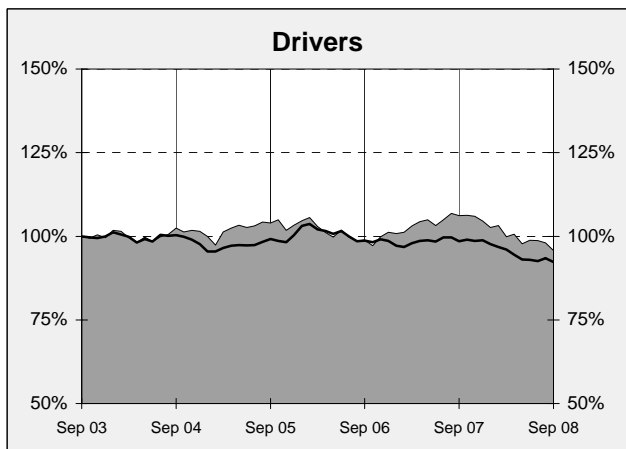
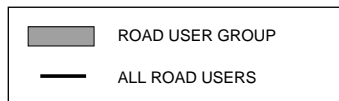


[‡] Average annual percentage change based on the exponential trend from the year ending September 2003 to year ending September 2008.

DEATHS IN EACH ROAD USER GROUP - TRENDS

Annual deaths in each road user group - last 5 years

The number shown at each month represents the number of deaths in the preceding 12 months expressed as a percentage of the number of deaths in the 12 months to September 2003.



a Comprises drivers and passengers

b Includes pillion passengers

NUMBER OF FATAL ROAD CRASHES IN EACH STATE / TERRITORY

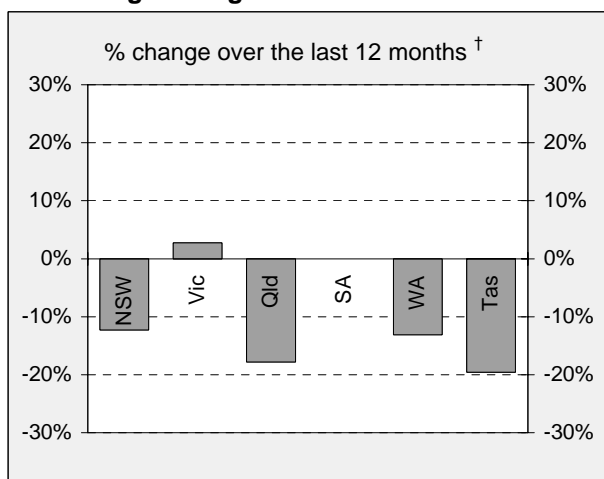
Fatal crashes by State/Territory

for current month, year to date, 12 months ended September, and five year trend.

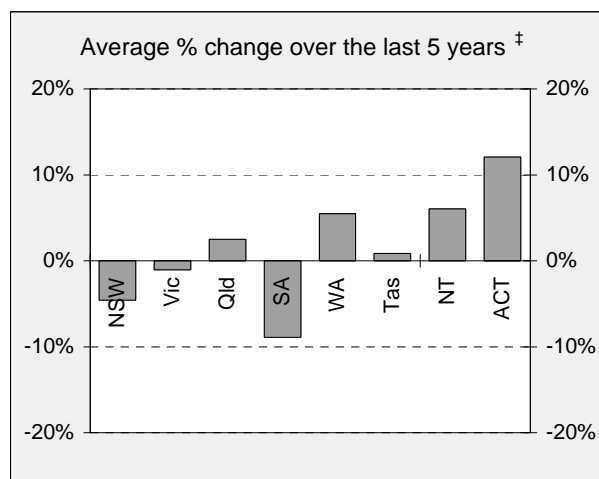
	NSW	Vic	Qld	SA	WA	Tas	NT	ACT	Australia
Current month									
Sep 2008	26	18	20	10	10	0	6	1	91
Sep 2007	31	22	30	10	16	1	4	0	114
% change	-16.1	-18.2	-33.3	0.0	-37.5	-100.0	50.0	-	-20.2
Year to date									
Jan 2008 - Sep 2008	266	211	218	63	130	30	52	13	983
Jan 2007 - Sep 2007	307	203	265	76	158	32	31	11	1,083
% change	-13.4	3.9	-17.7	-17.1	-17.7	-6.3	67.7	18.2	-9.2
12 months to date									
Oct 2007 - Sep 2008	364	298	291	94	186	37	67	16	1,353
Oct 2006 - Sep 2007	415	290	354	94	214	46	42	16	1,471
% change	-12.3	2.8	-17.8	0.0	-13.1	-19.6	59.5	0.0	-8.0
Average annual % change over 5 years^a									
YE September 2003 to YE September 2008	-4.6	-1.0	2.5	-8.9	5.5	0.8	6.0	12.1	-0.9

a Average annual percentage change based on the exponential trend for the last five 12-month periods

Percentage change in fatal crashes in each State



† Percentage change between the two 12-month periods ending September 2008 and September 2007. NT and ACT not shown.



‡ Average annual percentage change based on the exponential trend from the year ending September 2003 to year ending September 2008.

FATAL CRASHES INVOLVING TRUCKS OR BUSES

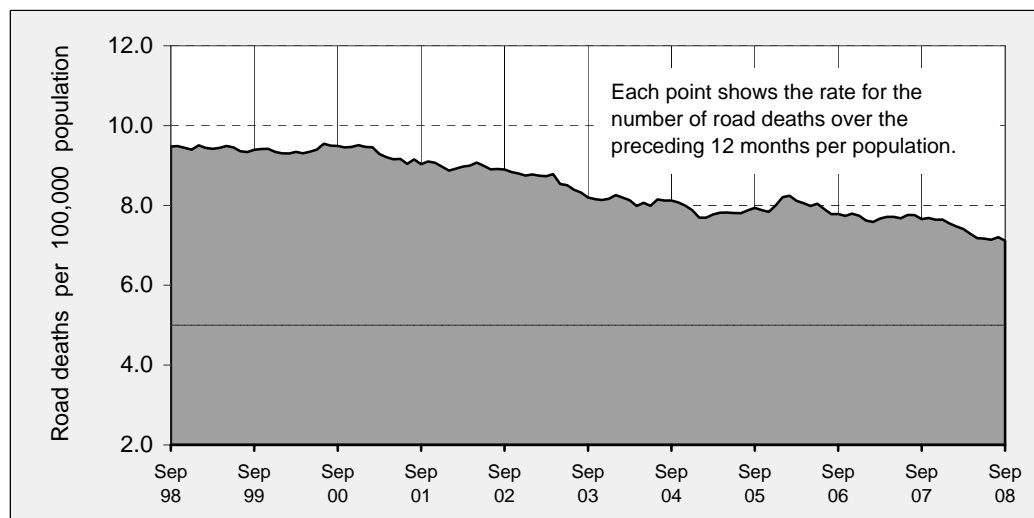
Analysis of fatal crashes involving heavy vehicles is now published in a separate quarterly bulletin

ROAD DEATH RATES

Road deaths per 100,000 population

	NSW	Vic	Qld	SA	WA	Tas	NT	ACT	Australia
12-months to date									
Oct 2007 - Sep 2008	5.6	6.4	7.6	7.0	9.7	7.7	35.3	4.7	7.0
Oct 2006 - Sep 2007	6.5	6.2	9.1	6.8	11.0	11.0	22.0	5.0	7.6
Calendar year									
2007	6.3	6.4	8.6	7.8	11.2	9.1	26.1	4.1	7.6
2002	8.5	8.2	8.7	10.1	9.3	7.8	27.6	3.1	8.7

Australian road deaths per year per 100,000 population - moving 12-monthly data



CHARACTERISTICS OF FATAL CRASHES

Proportion (per cent) of fatal crashes by speed limit, crash type, time of day, and time of week. Two years ended September 2008 and two years ended September 2003

	Speed limit (km/h) ^a			Time of Day	
	Up to 60	65-95	100+	Day	Night ^b
Oct 2006 - Sep 2008	31.3%	22.3%	46.4%	56.5%	43.5%
Oct 2001 - Sep 2003	31.6%	22.3%	46.2%	56.1%	43.9%
	Crash Type			Time of week	
	Pedestrian crash	Other single veh. Crash	Other multiple veh. crash	Week day	Week-end ^c
Oct 2006 - Sep 2008	13.7%	47.8%	38.5%	58.2%	41.8%
Oct 2001 - Sep 2003	16.1%	44.4%	39.5%	60.3%	39.7%

^a Excludes ACT

^b 6:00 pm to 5:59 am

^c 6:00 pm Friday to 5:59 am Monday

ROAD DEATHS BY AGE, GENDER AND ROAD USER GROUP

Road deaths by age and gender

for 12 months ended September 2008 and September 2007

	0-16 years	17-20 years	21-25 years	26-39 years	40-59 years	60+ years	All deaths ^a
Males							
Oct 2007 - Sep 2008	55	146	157	289	277	170	1,103
Oct 2006 - Sep 2007	56	148	148	330	281	199	1,164
% change	-1.8	-1.4	6.1	-12.4	-1.4	-14.6	-5.2
Females							
Oct 2007 - Sep 2008	32	47	34	68	101	108	392
Oct 2006 - Sep 2007	45	46	45	74	98	120	432
% change	-28.9	2.2	-24.4	-8.1	3.1	-10.0	-9.3
Persons^b							
Oct 2007 - Sep 2008	88	193	191	357	378	278	1,496
Oct 2006 - Sep 2007	101	194	193	404	379	319	1,597
% change	-12.9	-0.5	-1.0	-11.6	-0.3	-12.9	-6.3

a Includes road users with unstated age

b Includes road users with unstated gender

Road deaths by age for each main road user group

	0-16 years	17-20 years	21-25 years	26-39 years	40-59 years	60+ years	All deaths ^a
Occupants^b							
Oct 2007 - Sep 2008	69	155	137	227	251	190	1,037
Oct 2006 - Sep 2007	64	160	134	270	247	236	1,117
% change	7.8	-3.1	2.2	-15.9	1.6	-19.5	-7.2
Motorcyclists^c							
Oct 2007 - Sep 2008	2	23	37	87	75	22	248
Oct 2006 - Sep 2007	8	19	42	89	65	11	234
% change	-75.0	21.1	-11.9	-2.2	15.4	100.0	6.0
Pedestrians							
Oct 2007 - Sep 2008	13	13	15	37	40	62	181
Oct 2006 - Sep 2007	22	13	16	35	50	69	206
% change	-40.9	0.0	-6.3	5.7	-20.0	-10.1	-12.1

a Includes road users with unstated age

b Comprises drivers and passengers

c Includes pillion passengers

TIME SERIES - QUARTERLY SUPPLEMENT

Road deaths by road user group, 1993 to 2007

	<i>Drivers</i>	<i>Passengers</i>	<i>Pedestrians</i>	<i>Motor-cyclists^a</i>	<i>Cyclists</i>	<i>All road users^b</i>
1993	859	513	331	203	45	1,953
1994	809	501	367	190	59	1,928
1995	874	491	398	204	48	2,017
1996	869	499	351	193	57	1,970
1997	776	431	328	177	52	1,767
1998	741	468	318	181	44	1,755
1999	820	428	299	176	40	1,764
2000	852	450	287	191	31	1,817
2001	776	407	290	216	46	1,737
2002	785	422	249	224	34	1,715
2003	747	420	232	188	26	1,621
2004	761	361	220	195	43	1,583
2005	775	347	225	234	41	1,627
2006	759	334	227	239	39	1,598
2007	784	337	203	237	41	1,602

a Includes pillion passengers

b Includes road users not separately specified

Road deaths by State/Territory, 1993 to 2007

	<i>NSW</i>	<i>Vic</i>	<i>Qld</i>	<i>SA</i>	<i>WA</i>	<i>Tas</i>	<i>NT</i>	<i>ACT</i>	<i>Australia</i>
1993	581	435	396	218	209	58	44	12	1,953
1994	646	377	418	159	211	59	41	17	1,928
1995	620	418	456	181	209	57	61	15	2,017
1996	581	417	385	181	247	64	72	23	1,970
1997	576	377	360	148	197	32	60	17	1,767
1998	556	390	279	168	223	48	69	22	1,755
1999	577	383	314	151	218	53	49	19	1,764
2000	603	407	317	166	212	43	51	18	1,817
2001	524	444	324	153	165	61	50	16	1,737
2002	561	397	322	154	179	37	55	10	1,715
2003	539	330	310	157	180	41	53	11	1,621
2004	510	343	311	139	178	58	35	9	1,583
2005	508	346	330	148	163	51	55	26	1,627
2006	496	337	335	117	203	55	42	13	1,598
2007	435	333	360	124	235	45	56	14	1,602

DEATH RATES - QUARTERLY SUPPLEMENT

Road death rates by State/Territory

	<i>NSW</i>	<i>Vic</i>	<i>Qld</i>	<i>SA</i>	<i>WA</i>	<i>Tas</i>	<i>NT</i>	<i>ACT</i>	<i>Australia</i>
<i>Per capita^a</i>									
2007	6.32	6.40	8.61	7.83	11.16	9.12	26.06	4.12	7.66
2002	8.46	8.16	8.67	10.12	9.29	7.83	27.58	3.10	8.73
<i>Per vehicle^b</i>									
2007	1.00	0.87	1.19	1.07	1.40	1.18	4.74	0.61	1.08
2002	1.46	1.16	1.32	1.45	1.27	1.10	5.30	0.48	1.34

a Annual deaths per 100,000 population: 2007 at June 30 (preliminary data); 2002 at June 30 (revised data) taken from ABS catalogue 3201.0

b Annual deaths per 10,000 registered motor vehicles: 2007 at Mar 31; 2002 at Oct 31 taken from ABS catalogue 9309.0.

DEATHS BY AGE AND ROAD USER GROUP - QUARTERLY SUPPLEMENT

Road deaths by road user group and age

for 12 months ended September 2008, September 2007 and five year trend

	0-16 years	17-20 years	21-25 years	26-39 years	40-59 years	60+ years	All deaths ^d
Drivers							
Oct 2007 - Sep 2008	4	98	94	171	206	138	718
Oct 2006 - Sep 2007	4	104	97	213	206	169	796
% change	0.0	-5.8	-3.1	-19.7	0.0	-18.3	-9.8
Ave annual % change ^a							
YE Sep 2003 to YE Sep 2008	-0.6	-1.9	-0.9	1.1	-1.3	-0.4	-0.5
Passengers							
Oct 2007 - Sep 2008	65	57	43	56	45	52	319
Oct 2006 - Sep 2007	60	56	37	57	41	67	321
% change	8.3	1.8	16.2	-1.8	9.8	-22.4	-0.6
Ave annual % change ^a							
YE Sep 2003 to YE Sep 2008	-6.5	-7.3	-1.0	-6.4	-2.6	-4.5	-5.2
Pedestrians							
Oct 2007 - Sep 2008	13	13	15	37	40	62	181
Oct 2006 - Sep 2007	22	13	16	35	50	69	206
% change	-40.9	0.0	-6.3	5.7	-20.0	-10.1	-12.1
Ave annual % change ^a							
YE Sep 2003 to YE Sep 2008	-3.5	-3.6	3.4	-0.6	-4.1	-4.8	-2.8
Motorcyclists^b							
Oct 2007 - Sep 2008	2	23	37	87	75	22	248
Oct 2006 - Sep 2007	8	19	42	89	65	11	234
% change	-75.0	21.1	-11.9	-2.2	15.4	100.0	6.0
Ave annual % change ^a							
YE Sep 2003 to YE Sep 2008	11.4	-0.1	5.1	0.0	8.0	16.8	3.9
Cyclists							
Oct 2007 - Sep 2008	4	1	2	6	12	4	29
Oct 2006 - Sep 2007	7	2	1	10	17	3	40
All road users^c							
Oct 2007 - Sep 2008	88	193	191	357	378	278	1,496
Oct 2006 - Sep 2007	101	194	193	404	379	319	1,597
% change	-12.9	-0.5	-1.0	-11.6	-0.3	-12.9	-6.3
Ave annual % change ^a							
YE Sep 2003 to YE Sep 2008	-7.2	-4.0	-0.1	0.0	0.4	-2.2	-1.3

a Average annual percentage change based on the exponential trend for the last five 12-months periods.

b Includes pillion passengers

c Includes road users not separately classified

d Includes deaths with unstated age

DEATHS BY STATE / TERRITORY AND ROAD USER - QUARTERLY SUPPLEMENT

Road deaths by road user group and State/Territory
for 12 months ended September 2008, September 2007 and five year trend

	NSW	Vic	Qld	SA	WA	Tas	NT	ACT	Australia
Drivers									
Oct 2007 - Sep 2008	211	163	140	54	98	23	26	3	718
Oct 2006 - Sep 2007	217	170	183	51	121	22	23	9	796
% change	-2.8	-4.1	-23.5	5.9	-19.0	4.5	13.0	-	-9.8
Ave annual % change ^a									
Sep 2003 to Sep 2008	-3.1	-1.6	2.7	-9.5	5.4	8.0	5.9	14.0	-0.5
Passengers									
Oct 2007 - Sep 2008	63	65	67	30	54	8	27	5	319
Oct 2006 - Sep 2007	86	59	67	27	53	16	11	2	321
% change	-26.7	10.2	0.0	11.1	1.9	-50.0	145.5	-	-0.6
Ave annual % change ^a									
Sep 2003 to Sep 2008	-11.6	-5.3	-3.1	-8.4	5.0	9.4	-5.7	-	-5.2
Pedestrians									
Oct 2007 - Sep 2008	46	53	32	14	17	1	15	3	181
Oct 2006 - Sep 2007	70	42	43	13	20	6	10	2	206
% change	-34.3	26.2	-25.6	7.7	-15.0	-83.3	50.0	-	-12.1
Ave annual % change ^a									
Sep 2003 to Sep 2008	-8.3	2.4	-3.1	-5.5	-0.4	-10.5	20.3	8.2	-2.8
Motorcyclists ^b									
Oct 2007 - Sep 2008	57	48	75	12	36	6	9	5	248
Oct 2006 - Sep 2007	60	42	76	10	32	8	3	3	234
% change	-5.0	14.3	-1.3	20.0	12.5	-25.0	200.0	-	6.0
Ave annual % change ^a									
Sep 2003 to Sep 2008	-0.9	3.0	9.4	-7.4	9.8	-3.0	-	-	3.9
Cyclists									
Oct 2007 - Sep 2008	10	7	9	1	2	0	0	0	29
Oct 2006 - Sep 2007	11	6	9	7	4	2	0	1	40
All road users ^c									
Oct 2007 - Sep 2008	387	336	323	111	208	38	77	16	1,496
Oct 2006 - Sep 2007	444	319	378	108	230	54	47	17	1,597
% change	-12.8	5.3	-14.6	2.8	-9.6	-29.6	63.8	-5.9	-6.3
Ave annual % change ^a									
Sep 2003 to Sep 2008	-5.5	-1.2	2.2	-8.5	4.9	1.7	5.3	10.6	-1.3

^a This represents the average annual exponential change between the annual count of 5-years ago and the current annual count

^b Includes pillion passengers

^c Includes road users not separately classified

1. Definition

The road safety agencies in each jurisdiction use detailed criteria to define road crashes and road deaths. Briefly, a death is classified as resulting from a road crash if the crash occurred on a public road, and the death occurred within 30 days from injuries sustained in the crash. If it is determined that a crash was deliberate (for example suicide), the crash and deaths are excluded from this bulletin.

Road deaths from recent months are preliminary and subject to revision.

2. Other sources for the tables in this bulletin

The underlying database used to produce this bulletin is available for online querying and data extraction at

http://www.infrastructure.gov.au/roads/safety/road_fatality_statistics/fatal_road_crash_database.aspx

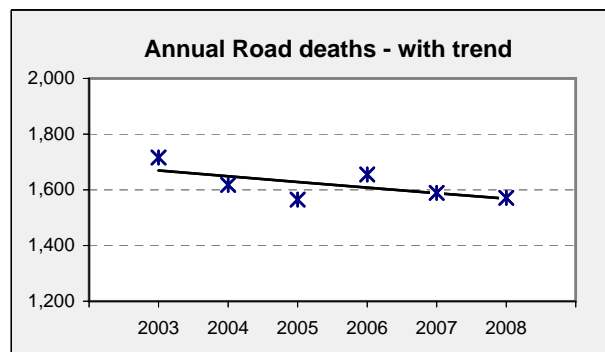
3. Estimation of five year trends

In this bulletin, the figures for the 'Average annual per cent change over 5 years' are calculated by fitting an exponential trend line to the last six data points (years 0 to 5).

The Excel function `—logest—` performs the fit. The resulting trend line represents a constant annual percent change over the period. An example is given below :

Example : Average Annual Change in Road Deaths

Road deaths - year ended March			
	A	B	% Change
0	2003	1,716	
1	2004	1,618	-5.7%
2	2005	1,565	-3.3%
3	2006	1,655	5.8%
4	2007	1,589	-4.0%
5	2008	1,571	-1.1%
Average =			-1.2%



Average annual growth = $\text{Index}(\text{Logest}(B1:B6, A1:A6), 1) - 1 = -1.2\%$