



Australian Government

Department of Infrastructure,
Transport, Regional Development
and Local Government

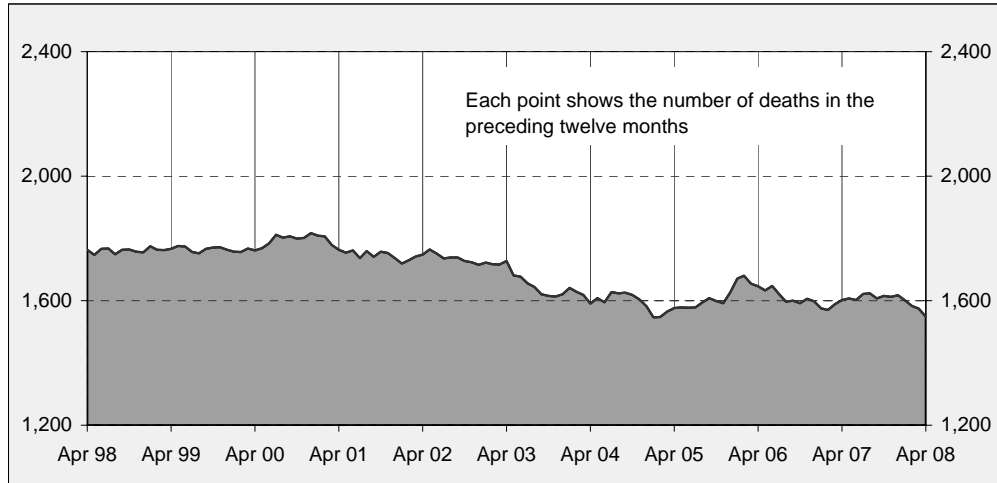
Road Deaths Australia

Monthly Bulletin

ISSN 1449-1168

April 2008

Australian road deaths for 12 months to date — last 10 years



Inquiries

For further information about data in this bulletin, contact:

Road Safety Research and Statistics
Road Safety Branch
GPO Box 594,
Canberra, ACT 2601
Email: roadsafety@infrastructure.gov.au
Internet: www.atsb.gov.au

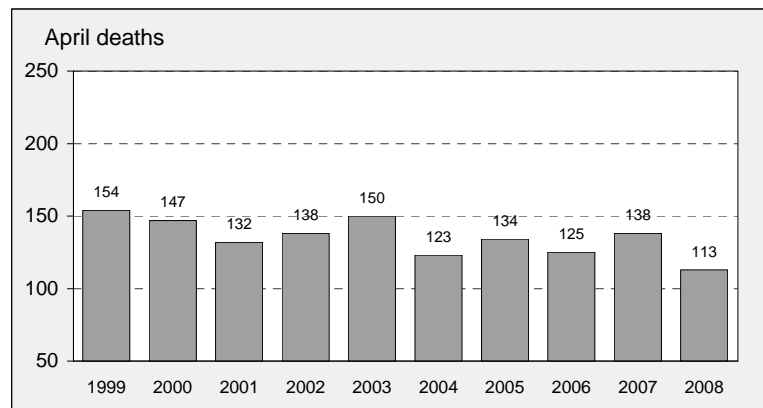
Data Sources

The data presented here are obtained from the following sources:

- Roads and Traffic Authority, NSW
- Vicroads
- Queensland Transport
- Department for Transport, Energy and Infrastructure, South Australia
- Western Australia Police
- Department of Infrastructure, Energy and Resources, Tasmania
- Department of Planning and Infrastructure, Northern Territory
- Territory and Municipal Services, ACT

• Road deaths from recent months are preliminary and subject to revision.

Australian road deaths for April — last 10 years



This month's key figures

There was a total of 113 road deaths in April 2008.
- this is an 18.1 per cent decrease from the April 2007 figure.

There have been 474 road deaths in 2008 to the end of April.
- this is a 12.5 per cent decrease from the same 4 month period in 2007.

Notice :

Due to an organisational restructure, Road Safety (and publication of *Road Deaths Australia*) is now part of the Infrastructure and Surface Transport Policy Division. Redirection links will be provided on the ATSB website.

NUMBER OF ROAD CRASH DEATHS IN EACH STATE / TERRITORY

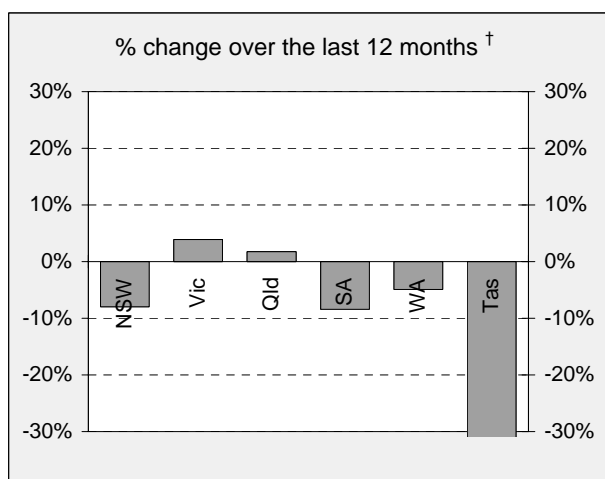
Road deaths by State/Territory

for current month, year to date, 12 months ended April, and five year trend

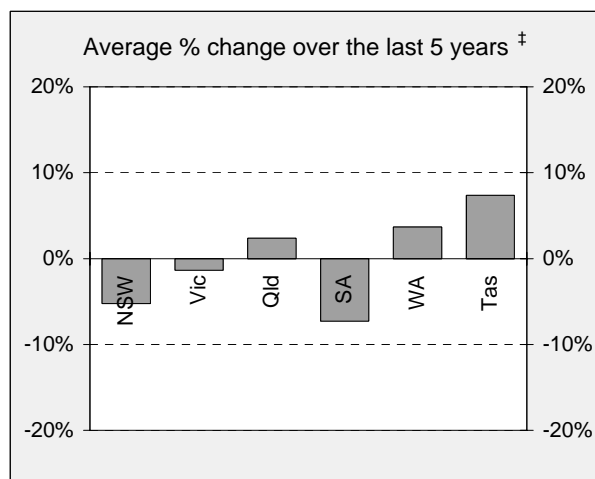
	NSW	Vic	Qld	SA	WA	Tas	NT	ACT	Australia
Current month									
Apr 2008	30	26	26	9	14	3	4	1	113
Apr 2007	48	25	25	14	10	12	1	3	138
% change	-37.5	4.0	4.0	-35.7	40.0	-75.0	300.0	-66.7	-18.1
Year to date									
Jan 2008 - Apr 2008	122	117	105	30	63	19	14	4	474
Jan 2007 - Apr 2007	155	103	112	45	84	27	11	5	542
% change	-21.3	13.6	-6.3	-33.3	-25.0	-29.6	27.3	-20.0	-12.5
12-months to date									
May 2007 - Apr 2008	416	346	353	109	214	39	59	13	1,549
May 2006 - Apr 2007	452	333	347	119	225	67	43	16	1,602
Difference	-36	13	6	-10	-11	-28	16	-3	-53
% change	-8.0	3.9	1.7	-8.4	-4.9	-41.8	37.2	-18.8	-3.3
Average annual % change over 5 years^a									
YE April 2003 to YE April 2008	-5.2	-1.4	2.4	-7.3	3.7	7.4	-0.4	5.0	-1.4

^a This represents the average annual exponential change between the annual count of 5-years ago and the current annual count

Percentage change in deaths in each State



† Percentage change between the 12-month periods



‡ Average annual percentage change based on the exponential trend from the year ending March 2003 to the year ending March 2008.

NUMBER OF DEATHS IN EACH ROAD USER GROUP

Road deaths by road user group and gender

for 12 months ended April 2008, April 2007 and five year trend

	Drivers	Passengers	Pedestrians	Motor-cyclists ^a	Cyclists	All road users ^b
Males						
May 2007 - Apr 2008	602	170	111	211	29	1,123
May 2006 - Apr 2007	612	183	143	230	39	1,207
% change	-1.6	-7.1	-22.4	-8.3	-25.6	-7.0
	-1.6	-7.1	-22.4	-8.3	-25.6	-7.0
Females						
May 2007 - Apr 2008	163	156	77	20	3	419
May 2006 - Apr 2007	173	134	71	11	4	393
% change	-5.8	16.4	8.5	81.8	-25.0	6.6
Persons^c						
May 2007 - Apr 2008	769	329	188	231	32	1,549
May 2006 - Apr 2007	786	318	214	241	43	1,602
% change	-2.2	3.5	-12.1	-4.1	-25.6	-3.3
Average annual % change over 5 years^d						
YE April 2003 to YE April 2008	-0.1	-5.5	-4.0	4.1	-0.2	-1.4

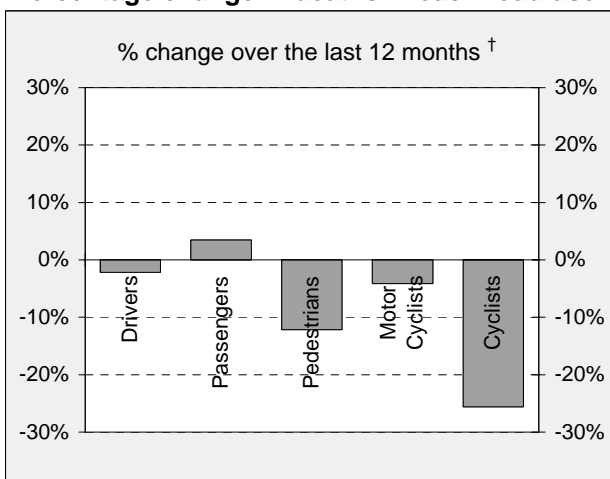
a Includes pillion passengers

b Includes road users not separately specified

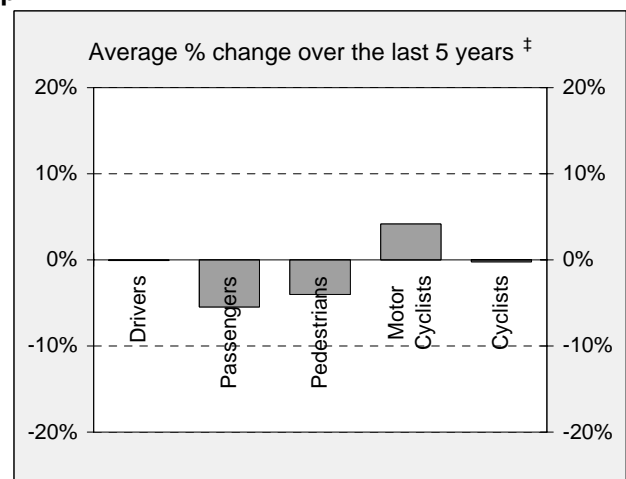
c Includes road users with unstated gender

d Average annual percentage change based on the exponential trend for the last five 12-month period.

Percentage change in deaths in each road user group



† Percentage change between the 12-month periods of May 2006 - Apr 2007 and May 2007 - Apr 2008

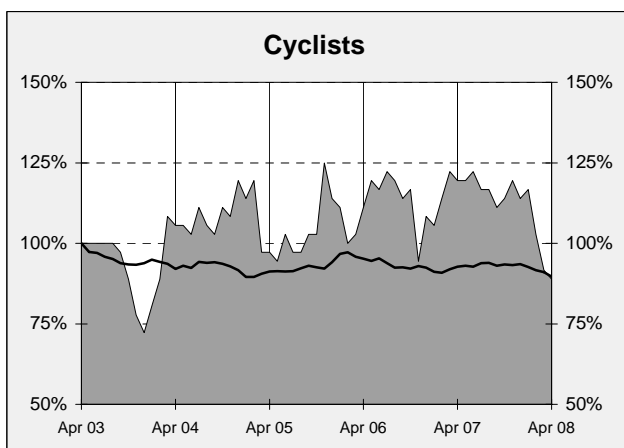
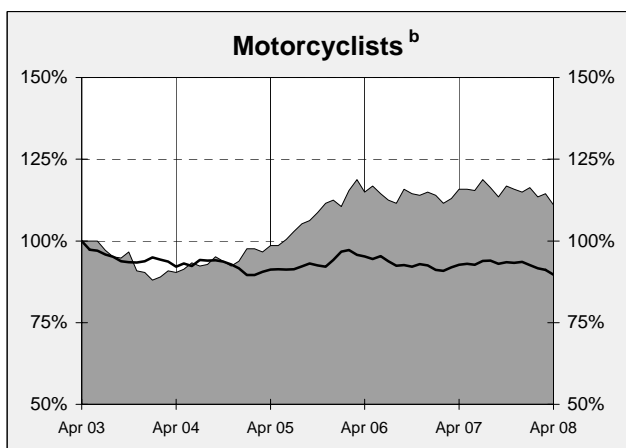
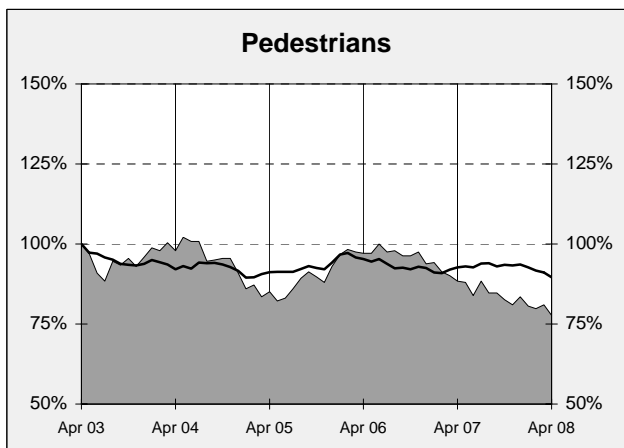
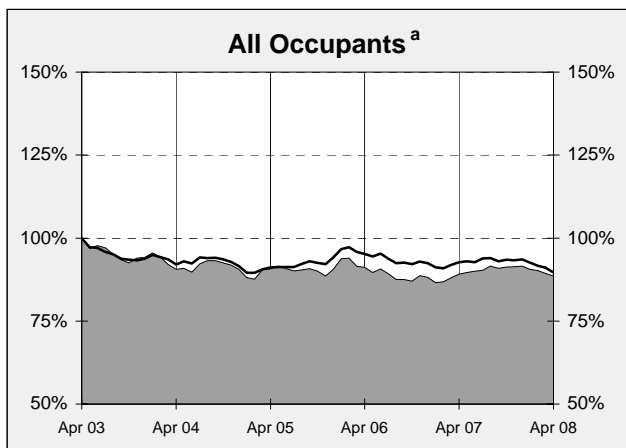
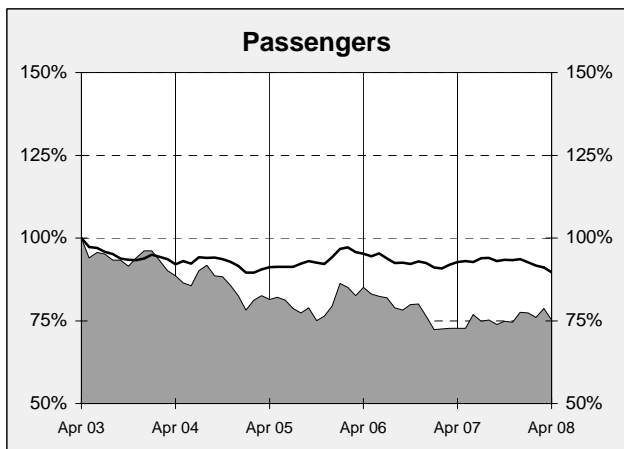
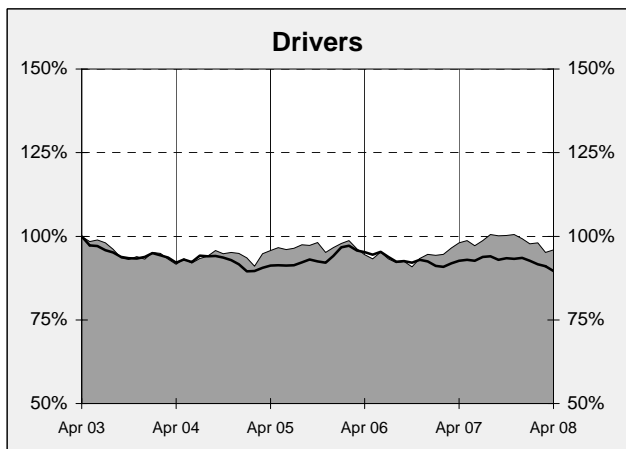
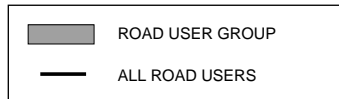


‡ Average annual percentage change based on the exponential trend over the period beginning with the 12 months to Mar 03 and ending with the 12 months to Mar 08.

DEATHS IN EACH ROAD USER GROUP - TRENDS

Annual deaths in each road user group - last 5 years

The number shown at each month represents the number of deaths in the preceding 12 months expressed as a percentage of the number of deaths in the 12 months to April 2003.



a Comprises drivers and passengers

b Includes pillion passengers

NUMBER OF FATAL ROAD CRASHES IN EACH STATE / TERRITORY

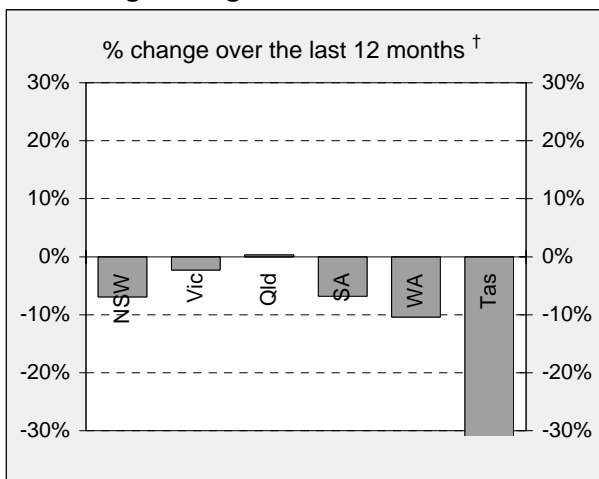
Fatal crashes by State/Territory

for current month, year to date, 12 months ended April, and five year trend.

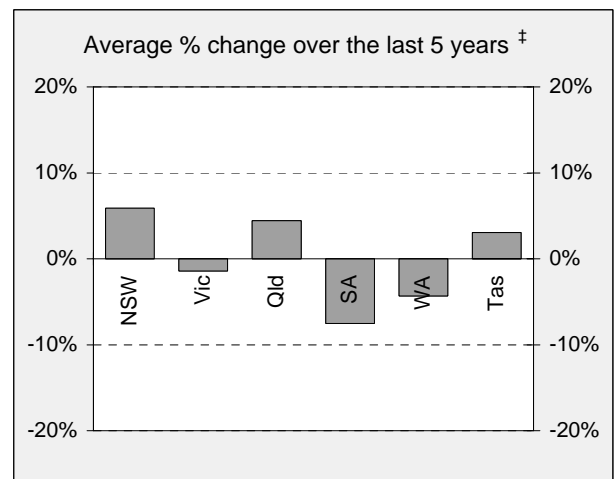
	NSW	Vic	Qld	SA	WA	Tas	NT	ACT	Australia
Current month									
Apr 2008	29	24	25	9	13	2	4	1	107
Apr 2007	42	24	24	9	10	9	1	3	122
% change	-31.0	0.0	4.2	0.0	30.0	-77.8	300.0	-66.7	-12.3
Year to date									
Jan 2008 - Apr 2008	116	107	91	27	55	18	14	4	432
Jan 2007 - Apr 2007	144	95	104	38	80	22	10	5	498
% change	-19.4	12.6	-12.5	-28.9	-31.3	-18.2	40.0	-20.0	-13.3
12 months to date									
May 2007 - Apr 2008	391	301	325	96	189	37	50	13	1,402
May 2006 - Apr 2007	420	308	324	103	211	55	39	15	1,475
% change	-6.9	-2.3	0.3	-6.8	-10.4	-32.7	28.2	-13.3	-4.9
Average annual % change over 5 years^a									
YE April 2003 to YE April 2008	-4.3	-1.4	3.1	-7.5	4.4	5.9	2.4	8.6	-0.8

^a Average annual percentage change based on the exponential trend for the last five 12-month periods

Percentage change in fatal crashes in each State



† Percentage change between the 12-month periods



‡ Average annual percentage change based on the exponential trend from the year ending March 2003 to the year ending March 2008.

FATAL CRASHES INVOLVING TRUCKS OR BUSES

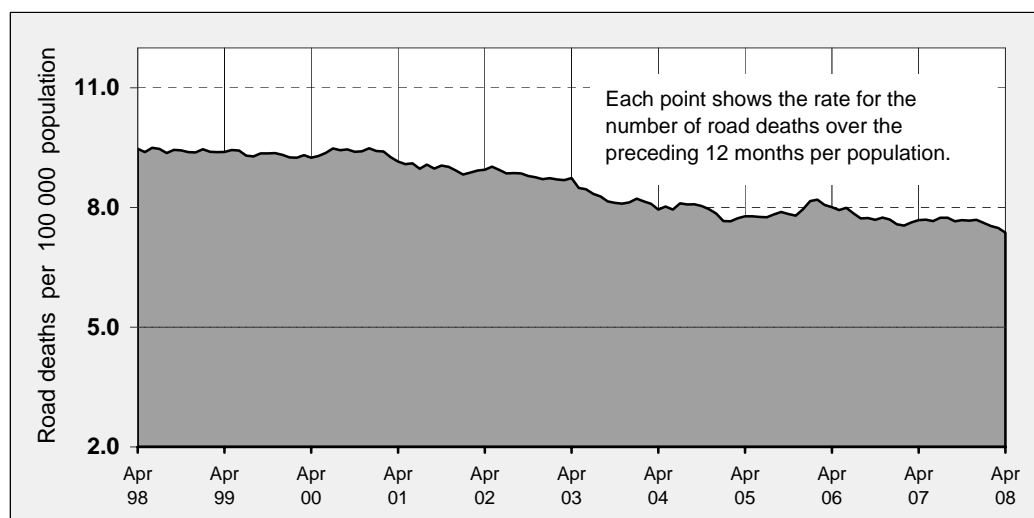
Analysis of fatal crashes involving heavy vehicles is now published in a separate quarterly bulletin

ROAD DEATH RATES

Road deaths per 100 000 population

	NSW	Vic	Qld	SA	WA	Tas	NT	ACT	Australia
12-months to date									
May 2007 - Apr 2008	6.0	6.6	8.4	6.9	10.1	7.9	27.4	3.8	7.4
May 2006 - Apr 2007	6.6	6.5	8.4	7.6	10.9	13.6	20.3	4.8	7.7
Calendar year									
2007	6.5	6.4	8.6	7.8	11.2	9.5	26.0	4.1	7.7
2002	8.5	8.2	8.7	10.1	9.3	7.8	27.6	3.1	8.7

Australian road deaths per year per 100 000 population - moving 12-monthly data



CHARACTERISTICS OF FATAL CRASHES

Proportion (per cent) of fatal crashes by speed limit, crash type, time of day, and time of week. Two years ended April 2008 and two years ended April 2003

	Speed limit (km/h) ^a			Time of Day	
	Up to 60	65-95	100+	Day	Night ^b
May 2006 - Apr 2008	31.3%	22.3%	46.4%	56.6%	43.4%
May 2001 - Apr 2003	32.4%	21.0%	46.6%	56.0%	44.0%
	Crash Type			Time of week	
	Pedestrian crash	Other single veh. Crash	Other multiple veh. crash	Week day	Week-end ^c
May 2006 - Apr 2008	13.9%	47.0%	39.1%	58.2%	41.8%
May 2001 - Apr 2003	17.0%	43.3%	39.6%	60.0%	40.0%

^a Excludes ACT

^b 6:00 pm to 5:59 am

^c 6:00 pm Friday to 5:59 am Monday

ROAD DEATHS BY AGE, GENDER AND ROAD USER GROUP

Road deaths by age and gender

for 12 months ended April 2008 and April 2007

	0-16 years	17-20 years	21-25 years	26-39 years	40-59 years	60+ years	All deaths ^a
Males							
May 2007 - Apr 2008	51	145	156	301	281	185	1,123
May 2006 - Apr 2007	65	164	156	340	279	200	1,207
% change	-21.5	-11.6	0.0	-11.5	0.7	-7.5	-7.0
Females							
May 2007 - Apr 2008	48	36	42	80	101	109	419
May 2006 - Apr 2007	39	56	47	62	89	99	393
% change	23.1	-35.7	-10.6	29.0	13.5	10.1	6.6
Persons^b							
May 2007 - Apr 2008	105	181	198	381	382	294	1,549
May 2006 - Apr 2007	106	220	203	402	368	299	1,602
% change	-0.9	-17.7	-2.5	-5.2	3.8	-1.7	-3.3

a Includes road users with unstated age

b Includes road users with unstated gender

Road deaths by age for each main road user group

	0-16 years	17-20 years	21-25 years	26-39 years	40-59 years	60+ years	All deaths ^a
Occupants^b							
May 2007 - Apr 2008	78	148	143	256	253	215	1,098
May 2006 - Apr 2007	68	185	145	261	236	206	1,104
% change	14.7	-20.0	-1.4	-1.9	7.2	4.4	-0.5
Motorcyclists^c							
May 2007 - Apr 2008	6	21	35	82	71	16	231
May 2006 - Apr 2007	7	17	43	94	71	9	241
% change	-14.3	23.5	-18.6	-12.8	0.0	77.8	-4.1
Pedestrians							
May 2007 - Apr 2008	16	11	18	37	44	60	188
May 2006 - Apr 2007	22	16	13	38	47	77	214
% change	-27.3	-31.3	38.5	-2.6	-6.4	-22.1	-12.1

a Includes road users with unstated age

b Comprises drivers and passengers

c Includes pillion passengers