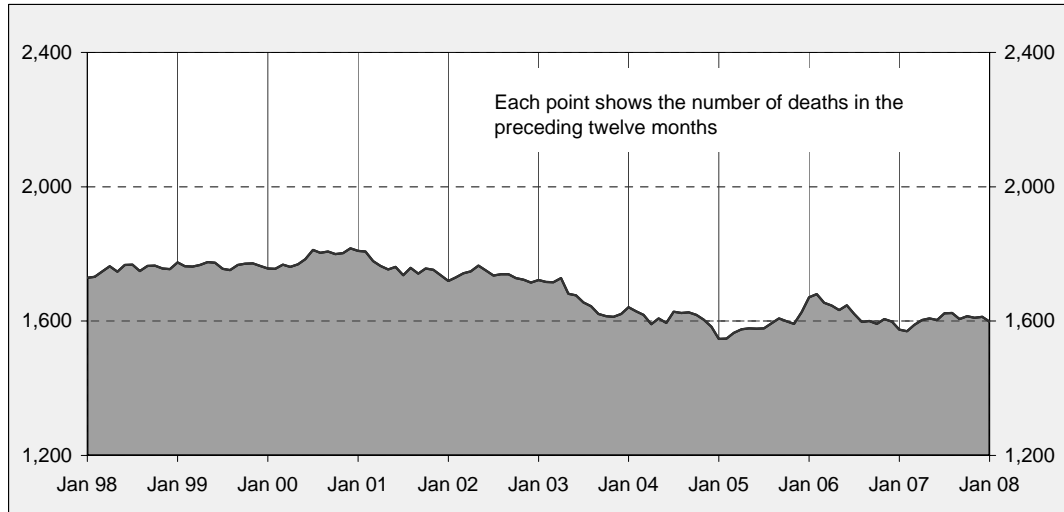




### Australian road deaths for 12 months to date - last 10 years



#### Inquiries

For further information about data in this bulletin, contact:

Road Safety Research and Statistics  
Australian Transport Safety Bureau  
PO Box 967,  
Civic Square, ACT 2608  
Email: [research@atsb.gov.au](mailto:research@atsb.gov.au)  
Internet: [www.atsb.gov.au](http://www.atsb.gov.au)

#### Data Sources

The data presented here are obtained from the following sources:

- Roads and Traffic Authority, NSW
- Vicroads
- Queensland Transport
- Department for Transport, Energy and Infrastructure, South Australia
- Western Australia Police
- Department of Infrastructure, Energy and Resources, Tasmania
- Department of Planning and Infrastructure, Northern Territory
- Territory and Municipal Services, ACT

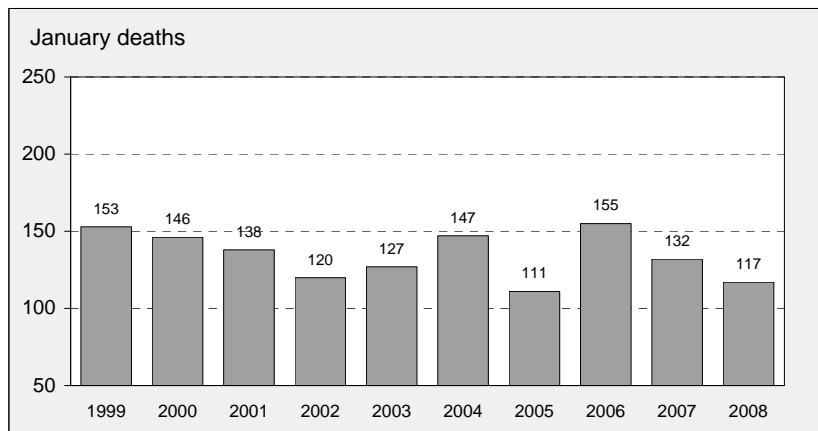
#### Note

Road death statistics for recent months are preliminary and subject to revision. They include any deaths occurring within 30 days of a crash stemming from injuries received in the crash.

#### About the Australian Transport Safety Bureau

The Australian Transport Safety Bureau is an operationally independent body within the Australian Government Department of Infrastructure, Transport, Regional Development and Local Government.

### Australian road deaths for January - last 10 years



### This month's key figures

There were a total of 117 road deaths in January 2008.  
- this is an 11.4 per cent decrease from the January 2007 figure.

During the 12 months ended January 2008, there were a total of 1,598 deaths.  
- this is a 1.5 per cent increase over the 12 month period ended January 2007.

# NUMBER OF ROAD CRASH DEATHS IN EACH STATE / TERRITORY

Road deaths by State/Territory for month, year to date, and twelve months - period ended January 2008 and period ended January 2007

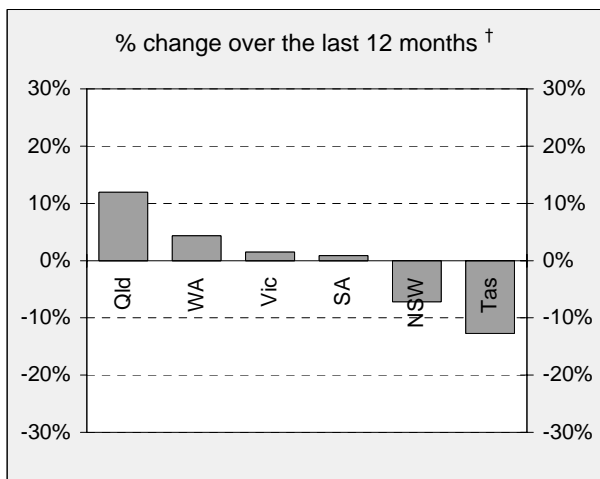
	NSW	Vic	Qld	SA	WA	Tas	NT	ACT	Australia
<b>Current month</b>									
Jan 2008	29	30	28	5	15	6	1	3	117
Jan 2007	34	23	21	12	32	5	5	0	132
% change	<b>-14.7</b>	<b>30.4</b>	<b>33.3</b>	<b>-58.3</b>	<b>-53.1</b>	<b>20.0</b>	<b>-80.0</b>	-	<b>-11.4</b>
<b>Year to date</b>									
Jan 2008 - Jan 2008	29	30	28	5	15	6	1	3	117
Jan 2007 - Jan 2007	34	23	21	12	32	5	5	0	132
% change	<b>-14.7</b>	<b>30.4</b>	<b>33.3</b>	<b>-58.3</b>	<b>-53.1</b>	<b>20.0</b>	<b>-80.0</b>	-	<b>-11.4</b>
<b>12-months to date</b>									
Feb 2007 - Jan 2008	439	341	366	117	218	48	52	17	1,598
Feb 2006 - Jan 2007	473	336	327	116	209	55	46	13	1,575
Difference	-34	5	39	1	9	-7	6	4	23
% change	<b>-7.2</b>	<b>1.5</b>	<b>11.9</b>	<b>0.9</b>	<b>4.3</b>	<b>-12.7</b>	<b>13.0</b>	<b>30.8</b>	<b>1.5</b>

### Average annual % change over 5 years<sup>a</sup>

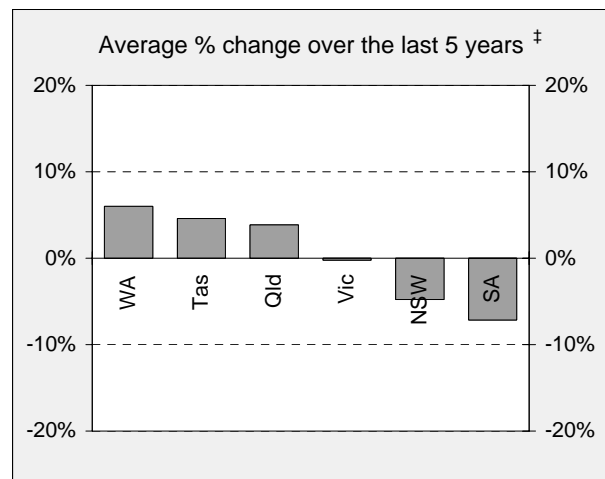
Feb 2003 to Jan 2008	<b>-4.8</b>	<b>-0.2</b>	<b>3.9</b>	<b>-7.2</b>	<b>6.0</b>	<b>4.6</b>	<b>4.3</b>	<b>10.8</b>	<b>-0.4</b>
----------------------	-------------	-------------	------------	-------------	------------	------------	------------	-------------	-------------

<sup>a</sup> Average annual percentage change based on the exponential trend for the last five 12-month periods

### Percentage change in deaths in each State



† Percentage change between the 12-month periods of Feb 2006 - Jan 2007 and Feb 2007 - Jan 2008



‡ Average annual percentage change based on the exponential trend for the last five 12-month periods

# NUMBER OF DEATHS IN EACH ROAD USER GROUP

Road deaths by road user group and gender for twelve months ended January 2008 and twelve months ended January 2007

	Drivers	Passengers	Pedestrians	Motor-cyclists <sup>a</sup>	Cyclists	All road users <sup>b</sup>
<b>Males</b>						
Feb 2007 - Jan 2008	616	176	115	221	39	1,167
Feb 2006 - Jan 2007	585	185	148	227	33	1,178
% change	5.3	-4.9	-22.3	-2.6	18.2	-0.9
<b>Females</b>						
Feb 2007 - Jan 2008	166	158	78	20	3	425
Feb 2006 - Jan 2007	170	130	80	10	5	395
% change	-2.4	21.5	-2.5	100.0	-40.0	7.6
<b>Persons<sup>c</sup></b>						
Feb 2007 - Jan 2008	784	337	193	242	42	1,598
Feb 2006 - Jan 2007	756	316	228	237	38	1,575
% change	3.7	6.6	-15.4	2.1	10.5	1.5
<b>Average annual % change over 5 years<sup>d</sup></b>						
Feb 2003 to Jan 2008	0.6	-5.1	-3.3	7.4	6.9	-0.4

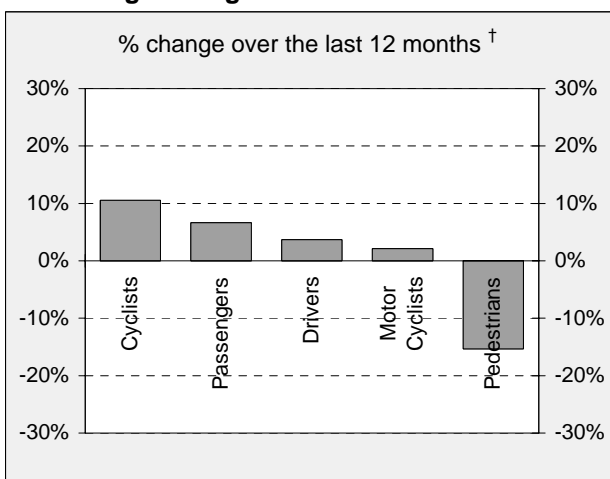
a Includes pillion passengers

b Includes road users not separately specified

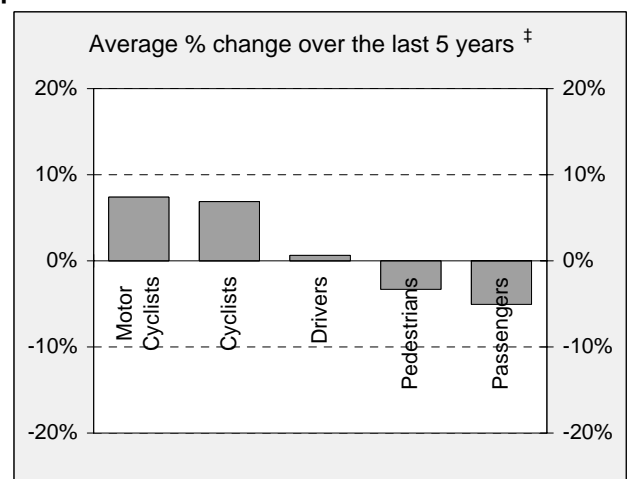
c Includes road users with unstated gender

d Average annual percentage change based on the exponential trend for the last five 12-month period.

## Percentage change in deaths in each road user group



† Percentage change between the 12-month periods of Feb 2006 - Jan 2007 and Feb 2007 - Jan 2008

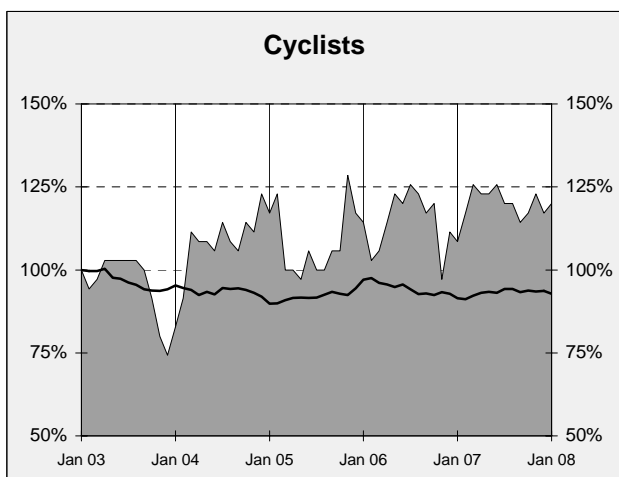
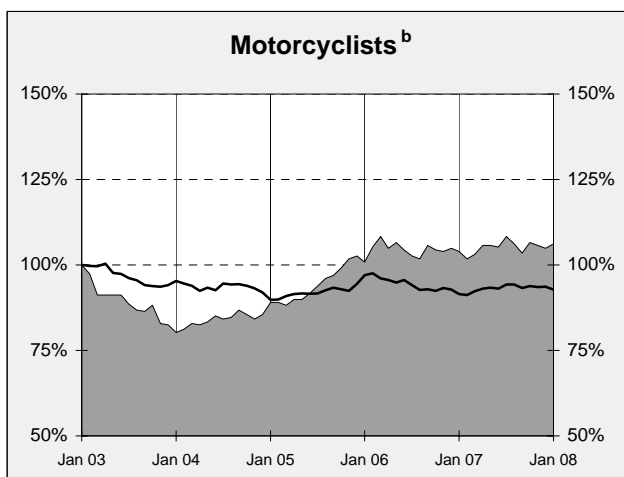
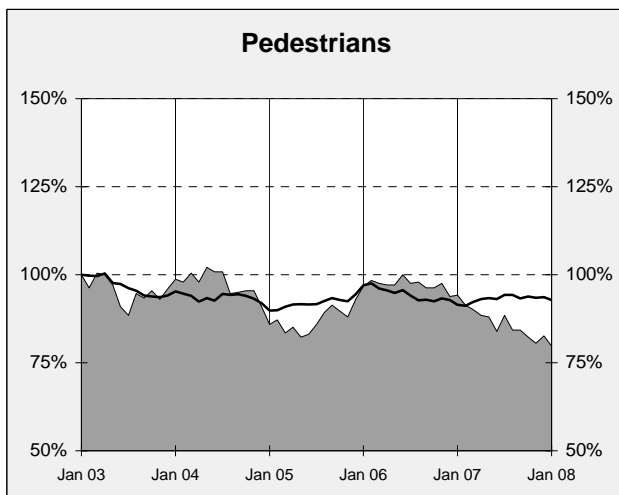
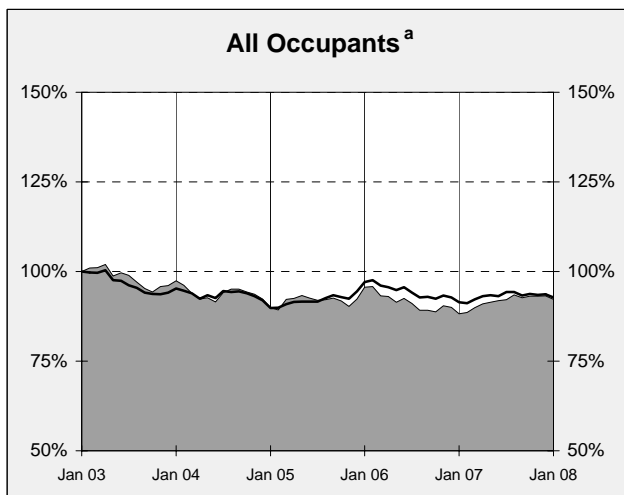
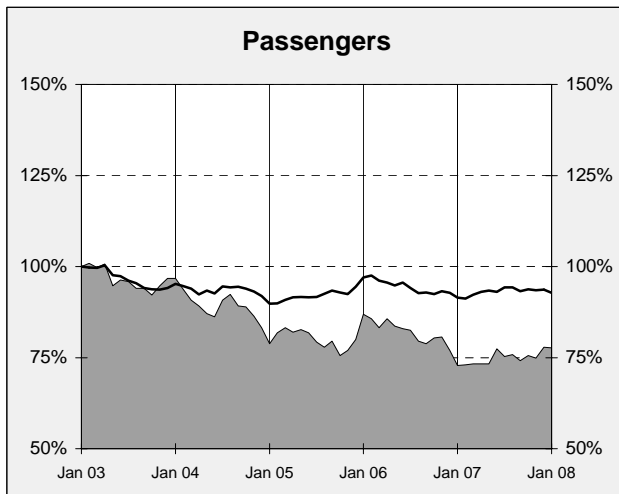
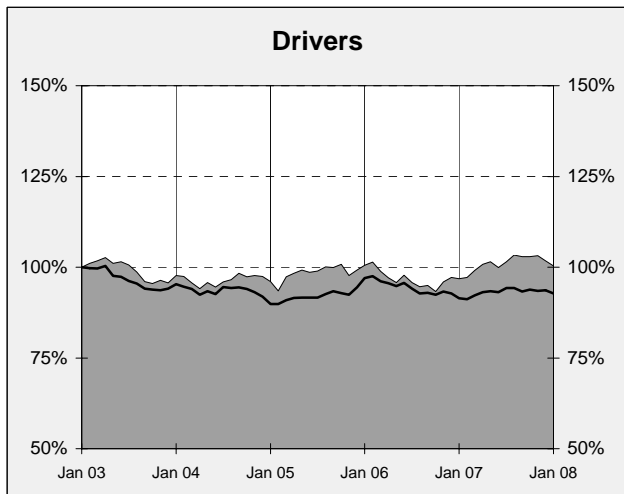
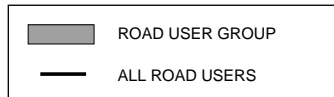


‡ Average annual percentage change based on the exponential trend for the last five 12-month periods

# DEATHS IN EACH ROAD USER GROUP - TRENDS

## Annual deaths in each road user group - last 5 years

The number shown at each month represents the number of deaths in the preceding 12 months expressed as a percentage of the number of deaths in the 12 months to January 2003.



a Comprises drivers and passengers

b Includes pillion passengers

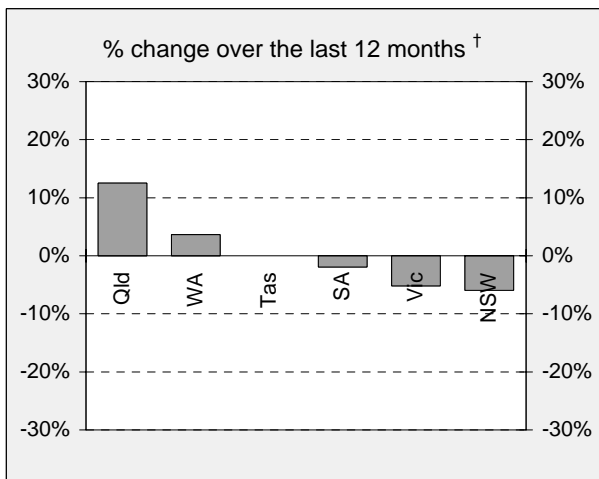
## NUMBER OF FATAL ROAD CRASHES IN EACH STATE / TERRITORY

Fatal crashes by State/Territory for month, year to date and twelve month-period ended January 2008 and period ended January 2007

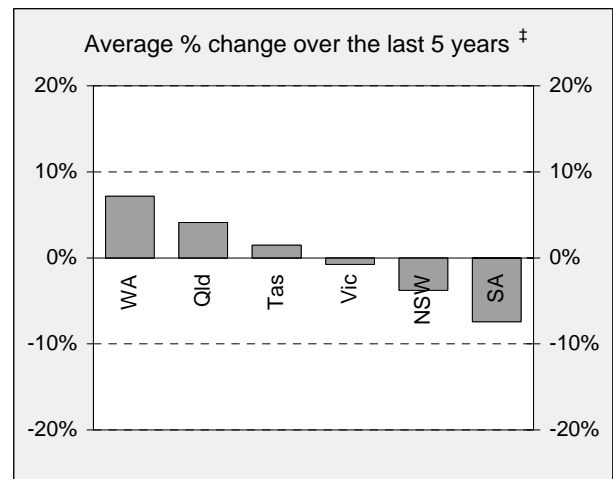
	NSW	Vic	Qld	SA	WA	Tas	NT	ACT	Australia
<b>Current month</b>									
Jan 2008	27	26	23	5	13	6	1	3	104
Jan 2007	32	22	19	10	29	4	4	0	120
% change	-15.6	18.2	21.1	-50.0	-55.2	50.0	-75.0	-	-13.3
<b>Year to date</b>									
Jan 2008 - Jan 2008	27	26	23	5	13	6	1	3	104
Jan 2007 - Jan 2007	32	22	19	10	29	4	4	0	120
% change	-15.6	18.2	21.1	-50.0	-55.2	50.0	-75.0	-	-13.3
<b>12 months to date</b>									
Feb 2007 - Jan 2008	409	294	341	102	198	43	43	17	1,447
Feb 2006 - Jan 2007	435	310	303	104	191	43	42	12	1,440
% change	-6.0	-5.2	12.5	-1.9	3.7	0.0	2.4	41.7	0.5
<b>Average annual % change over 5 years<sup>a</sup></b>									
Feb 2003 to Jan 2008	-3.8	-0.8	4.1	-7.4	7.2	1.5	2.9	11.7	-0.1

a Average annual percentage change based on the exponential trend for the last five 12-month periods

### Percentage change in fatal crashes in each State



† Percentage change between the 12-month periods of Feb 2006 - Jan 2007 and Feb 2007 - Jan 2008



‡ Average annual percentage change based on the exponential trend for the last five 12-month periods

## FATAL CRASHES INVOLVING TRUCKS OR BUSES

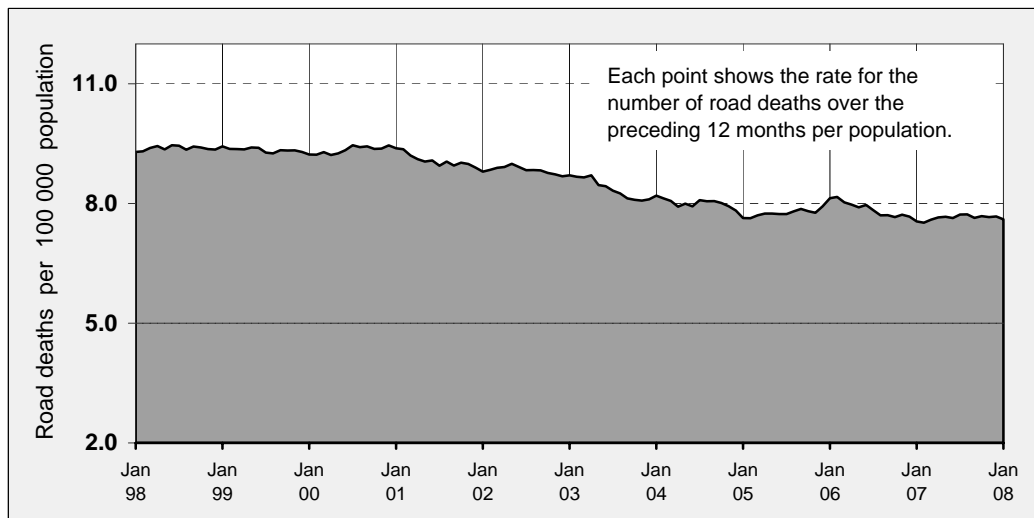
Analysis of fatal crashes involving heavy vehicles is now published in a separate quarterly bulletin on the ATSB website at [www.atsb.gov.au](http://www.atsb.gov.au).

## ROAD DEATH RATES

### Road deaths per 100 000 population

	NSW	Vic	Qld	SA	WA	Tas	NT	ACT	Australia
<b>12-months to date</b>									
Feb 2007 - Jan 2008	6.4	6.5	8.7	7.4	10.3	9.7	24.2	5.0	7.6
Feb 2006 - Jan 2007	6.9	6.5	8.0	7.4	10.1	11.2	21.8	3.9	7.6
<b>Calendar year</b>									
2007	6.5	6.4	8.6	7.8	11.2	9.5	26.0	4.1	7.7
2002	8.5	8.2	8.7	10.1	9.3	7.8	27.6	3.1	8.7

### Australian road deaths per year per 100 000 population - moving 12-monthly data



## CHARACTERISTICS OF FATAL CRASHES

Proportion (per cent) of fatal crashes by speed limit, crash type, time of day, and time of week. Two years ended January 2008 and two years ended January 2003

	Speed limit (km/h) <sup>a</sup>			Time of Day	
	Up to 60	65-95	100+	Day	Night <sup>b</sup>
Feb 2006 - Jan 2008	31.8%	22.4%	45.7%	56.3%	43.7%
Feb 2001 - Jan 2003	31.8%	21.5%	46.8%	56.1%	43.9%
	Crash Type			Time of week	
	Pedestrian crash	Other single veh. Crash	Other multiple veh. crash	Week day	Week-end <sup>c</sup>
Feb 2006 - Jan 2008	14.3%	46.7%	39.0%	58.9%	41.1%
Feb 2001 - Jan 2003	17.2%	43.0%	39.8%	60.2%	39.8%

<sup>a</sup> Excludes ACT

<sup>b</sup> 6:00 pm to 5:59 am

<sup>c</sup> 6:00 pm Friday to 5:59 am Monday

# ROAD DEATHS BY AGE, GENDER AND ROAD USER GROUP

## Road deaths by age and gender

	0-16 years	17-20 years	21-25 years	26-39 years	40-59 years	60+ years	<b>All deaths<sup>a</sup></b>
<b>Males</b>							
Feb 2007 - Jan 2008	55	154	150	323	287	191	1,167
Feb 2006 - Jan 2007	66	166	166	330	258	190	1,178
% change	-16.7	-7.2	-9.6	-2.1	11.2	0.5	-0.9
<b>Females</b>							
Feb 2007 - Jan 2008	46	42	40	79	98	116	425
Feb 2006 - Jan 2007	45	51	48	61	93	97	395
% change	2.2	-17.6	-16.7	29.5	5.4	19.6	7.6
<b>Persons<sup>b</sup></b>							
Feb 2007 - Jan 2008	105	196	190	402	385	307	1,598
Feb 2006 - Jan 2007	113	217	214	391	351	287	1,575
% change	-7.1	-9.7	-11.2	2.8	9.7	7.0	1.5

a Includes road users with unstated age

b Includes road users with unstated gender

## Road deaths by age for each main road user group

	0-16 years	17-20 years	21-25 years	26-39 years	40-59 years	60+ years	<b>All deaths<sup>a</sup></b>
<b>Occupants<sup>b</sup></b>							
Feb 2007 - Jan 2008	71	161	134	269	252	225	1,121
Feb 2006 - Jan 2007	68	180	154	249	230	190	1,072
% change	4.4	-10.6	-13.0	8.0	9.6	18.4	4.6
<b>Motorcyclists<sup>c</sup></b>							
Feb 2007 - Jan 2008	8	23	37	85	69	19	242
Feb 2006 - Jan 2007	7	22	46	93	60	9	237
% change	14.3	4.5	-19.6	-8.6	15.0	111.1	2.1
<b>Pedestrians</b>							
Feb 2007 - Jan 2008	17	10	17	39	47	61	193
Feb 2006 - Jan 2007	31	13	12	43	48	80	228
% change	-45.2	-23.1	41.7	-9.3	-2.1	-23.8	-15.4

a Includes road users with unstated age

b Comprises drivers and passengers

c Includes pillion passengers