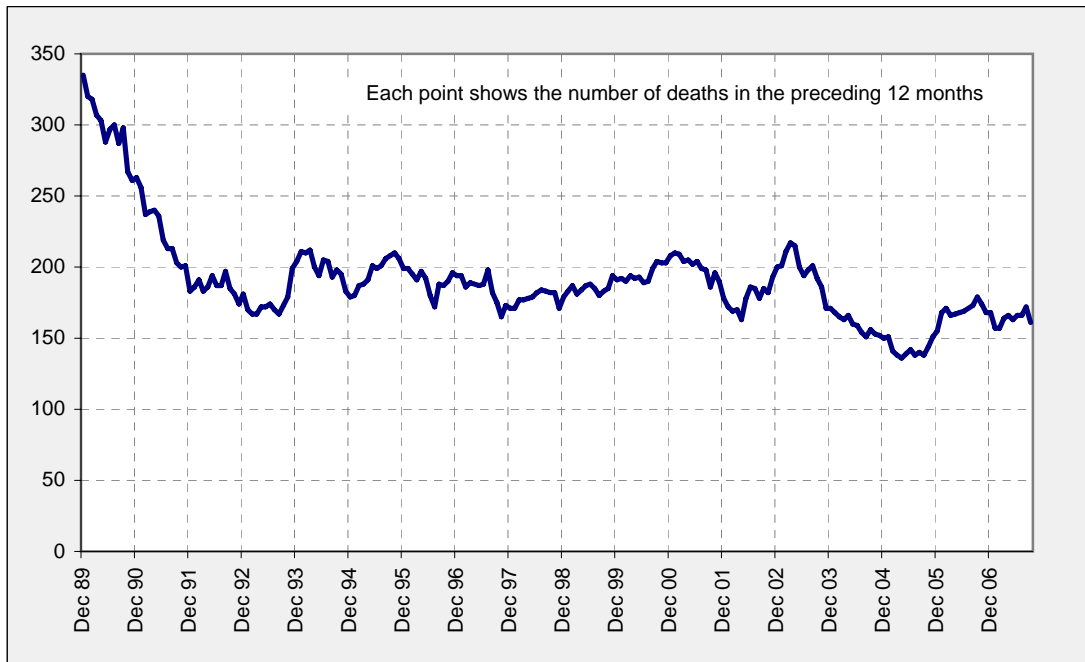




### Deaths from crashes involving articulated trucks, Australia, 12 month rolling total



### Key figures

In Australia during the 12 months to the end of September 2007, there were:

- 161 deaths from crashes involving articulated trucks, down 10.1 per cent on the previous 12 months
- 64 deaths from crashes involving heavy rigid trucks <sup>b</sup>
- 24 deaths from crashes involving buses, up 50.0 per cent on the previous 12 months.

<sup>b</sup> Excludes deaths in Victoria due to the unavailability of data.

#### Inquiries

For further information about data in this bulletin, contact:  
Road Safety Research and Statistics  
Australian Transport Safety Bureau  
PO Box 967 Civic Square ACT 2608  
Email: [research@atsb.gov.au](mailto:research@atsb.gov.au)  
Internet: [www.atsb.gov.au](http://www.atsb.gov.au)

#### About the Australian Transport Safety Bureau

The Australian Transport Safety Bureau is an operationally independent body within the Australian Government Department of Infrastructure, Transport, Regional Development and Local Government.

#### Data Sources

The data presented here are obtained from the following sources:

- Roads and Traffic Authority, New South Wales
- Vicroads
- Queensland Transport
- Department for Transport, Energy and Infrastructure, South Australia
- Western Australia Police
- Department of Infrastructure, Energy and Resources, Tasmania
- Department of Planning and Infrastructure, Northern Territory
- Territory and Municipal Services, Australian Capital Territory

#### Note

Road death statistics for recent months are preliminary and subject to revision. They include any deaths occurring within 30 days of a crash stemming from injuries received in the crash.

## Articulated Trucks - Fatal Crashes

### Fatal crashes involving articulated trucks by State/Territory by quarter - Five years to the end of September 2007

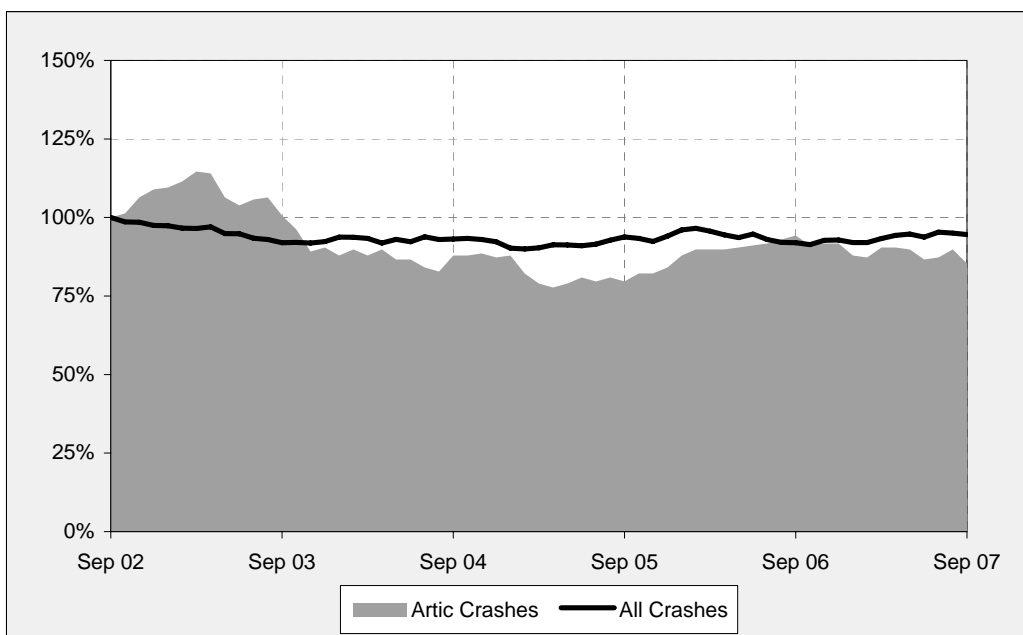
	NSW	Vic	Qld	SA	WA	Tas	NT	ACT	Australia
Oct - Dec 2002	22	12	8	1	6	0	2	0	51
Jan - Mar 2003	12	12	8	7	5	0	1	0	45
Apr - Jun 2003	13	8	9	2	1	1	0	0	34
Jul - Sep 2003	11	6	6	3	2	0	0	0	28
Oct - Dec 2003	14	7	8	1	5	0	0	0	35
Jan - Mar 2004	16	13	3	1	6	2	0	0	41
Apr - Jun 2004	12	9	2	5	2	1	1	0	32
Jul - Sep 2004	11	5	5	2	5	1	1	0	30
Oct - Dec 2004	18	8	3	2	3	0	0	0	34
Jan - Mar 2005	10	7	4	5	1	1	0	0	28
Apr - Jun 2005	15	6	7	0	5	2	0	0	35
Jul - Sep 2005	7	5	7	7	2	0	0	0	28
Oct - Dec 2005	13	10	9	3	3	2	1	0	41
Jan - Mar 2006	18	5	6	3	1	3	1	0	37
Apr - Jun 2006	14	7	8	2	5	0	1	0	37
Jul - Sep 2006	8	8	12	1	1	3	0	0	33
Oct - Dec 2006	17	6	8	3	3	0	0	0	37
Jan - Mar 2007	16	9	4	0	4	1	1	0	35
Apr - Jun 2007	10	5	11	2	2	0	1	0	31
Jul - Sep 2007	10	6	11	2	2	0	0	0	31

### 12 month periods to the end of September 2007 and September 2006

Oct 2006 - Sep 2007	53	26	34	7	11	1	2	0	134
Oct 2005 - Sep 2006	53	30	35	9	10	8	3	0	148
% change	0.0	-13.3	-2.9	-22.2	10.0	-87.5	-33.3	-	-9.5

### Annual count of fatal crashes involving articulated trucks in Australia - Five years to the end of September 2007

Each point shows the number of fatal crashes in the preceding 12 months expressed as a percentage of the number of fatal crashes in the 12 months to the end of September 2002.



## Articulated Trucks - Deaths

### Deaths from crashes involving articulated trucks by State/Territory by quarter - Five years to the end of September 2007

	NSW	Vic	Qld	SA	WA	Tas	NT	ACT	Australia
Oct - Dec 2002	22	16	10	2	6	0	6	0	62
Jan - Mar 2003	13	17	9	7	7	0	1	0	54
Apr - Jun 2003	17	9	10	2	1	1	0	0	40
Jul - Sep 2003	16	8	7	3	2	0	0	0	36
Oct - Dec 2003	17	7	9	1	7	0	0	0	41
Jan - Mar 2004	19	14	3	1	7	2	0	0	46
Apr - Jun 2004	15	9	2	6	2	1	1	0	36
Jul - Sep 2004	12	5	5	4	5	1	1	0	33
Oct - Dec 2004	18	9	3	2	3	0	0	0	35
Jan - Mar 2005	11	9	5	7	1	1	0	0	34
Apr - Jun 2005	18	6	7	0	7	2	0	0	40
Jul - Sep 2005	7	5	8	7	2	0	0	0	29
Oct - Dec 2005	16	12	15	3	3	2	1	0	52
Jan - Mar 2006	25	6	6	3	1	3	1	0	45
Apr - Jun 2006	16	9	9	2	6	0	1	0	43
Jul - Sep 2006	9	9	14	1	1	5	0	0	39
Oct - Dec 2006	19	7	8	4	3	0	0	0	41
Jan - Mar 2007	16	13	5	0	4	2	1	0	41
Apr - Jun 2007	11	16	12	3	2	0	1	0	45
Jul - Sep 2007	10	7	11	2	4	0	0	0	34

### 12 month periods to the end of September 2007 and September 2006

Oct 2006 - Sep 2007	56	43	36	9	13	2	2	0	161
Oct 2005 - Sep 2006	66	36	44	9	11	10	3	0	179
% change	-15.2	19.4	-18.2	0.0	18.2	-80.0	-33.3	-	-10.1

### Deaths from crashes involving articulated trucks by State/Territory by road user - 12 months to the end of September 2007

	NSW	Vic	Qld	SA	WA	Tas	NT	ACT	Australia
Drivers <sup>a</sup>	37	21	26	3	6	1	1	0	95
Passengers <sup>a</sup>	6	17	5	3	4	1	1	0	37
Pedestrians	8	3	2	1	3	0	0	0	17
Motor cyclists <sup>b</sup>	3	2	2	0	0	0	0	0	7
Cyclists	2	0	1	2	0	0	0	0	5
All road users <sup>c</sup>	56	43	36	9	13	2	2	0	161

<sup>a</sup> Includes drivers/passengers of light vehicles

<sup>b</sup> Includes pillion passengers

<sup>c</sup> Includes road users not separately specified

### Deaths from crashes involving articulated trucks by State/Territory by crash type - 12 months to the end of September 2007

	NSW	Vic	Qld	SA	WA	Tas	NT	ACT	Australia
Pedestrian crashes	8	3	2	1	3	0	0	0	17
Other single vehicle crashes	12	8	8	0	0	0	0	0	28
Multiple vehicle crashes	36	32	26	8	10	2	2	0	116
All crash types	56	43	36	9	13	2	2	0	161

## Heavy Rigid Trucks - Fatal Crashes

Fatal crashes involving heavy rigid trucks by State/Territory by quarter -  
Five years to the end of September 2007

	NSW	Vic	Qld	SA	WA	Tas	NT	ACT	<b>Australia</b>
Oct - Dec 2002	10	N/A	2	2	N/A	N/A	3	1	N/A
Jan - Mar 2003	2	N/A	4	2	N/A	N/A	0	1	N/A
Apr - Jun 2003	4	N/A	6	3	N/A	N/A	1	0	N/A
Jul - Sep 2003	3	N/A	2	2	N/A	N/A	1	0	N/A
Oct - Dec 2003	10	N/A	5	1	N/A	N/A	0	1	N/A
Jan - Mar 2004	8	6	5	2	3	3	0	0	27
Apr - Jun 2004	6	6	3	1	0	0	0	0	16
Jul - Sep 2004	6	3	6	3	2	1	0	0	21
Oct - Dec 2004	10	4	5	1	2	0	0	0	22
Jan - Mar 2005	5	11	1	1	N/A	0	1	0	N/A
Apr - Jun 2005	8	7	4	0	N/A	2	0	0	N/A
Jul - Sep 2005	7	4	3	2	N/A	0	0	1	N/A
Oct - Dec 2005	6	2	2	0	N/A	0	0	0	N/A
Jan - Mar 2006	5	N/A	3	1	1	1	0	0	N/A
Apr - Jun 2006	5	N/A	3	2	2	0	1	0	N/A
Jul - Sep 2006	4	N/A	5	2	2	1	0	0	N/A
Oct - Dec 2006	10	N/A	4	0	3	1	0	0	N/A
Jan - Mar 2007	2	N/A	2	3	3	0	0	0	N/A
Apr - Jun 2007	7	N/A	5	0	1	2	0	0	N/A
Jul - Sep 2007	8	N/A	2	1	3	0	1	0	N/A

### 12 month periods to the end of September 2007 and September 2006

Oct 2006 - Sep 2007	27	N/A	13	4	10	3	1	0	N/A
Oct 2005 - Sep 2006	20	N/A	13	5	N/A	2	1	0	N/A
% change	<b>35.0</b>	<b>N/A</b>	<b>0.0</b>	<b>-20.0</b>	<b>N/A</b>	<b>50.0</b>	<b>0.0</b>	<b>-</b>	<b>N/A</b>

## Heavy Rigid Trucks - Deaths

### Deaths from crashes involving heavy rigid trucks by State/Territory by quarter - Five years to the end of September 2007

	NSW	Vic	Qld	SA	WA	Tas	NT	ACT	Australia
Oct - Dec 2002	11	N/A	2	2	N/A	N/A	3	1	N/A
Jan - Mar 2003	3	N/A	4	2	N/A	N/A	0	1	N/A
Apr - Jun 2003	4	N/A	6	3	N/A	N/A	1	0	N/A
Jul - Sep 2003	3	N/A	2	2	N/A	N/A	1	0	N/A
Oct - Dec 2003	13	N/A	6	1	N/A	N/A	0	1	N/A
Jan - Mar 2004	10	6	5	2	3	3	0	0	29
Apr - Jun 2004	8	6	4	1	0	0	0	0	19
Jul - Sep 2004	10	3	7	3	2	1	0	0	26
Oct - Dec 2004	10	4	6	1	2	0	0	0	23
Jan - Mar 2005	5	13	1	1	N/A	0	1	0	N/A
Apr - Jun 2005	9	7	5	0	N/A	2	0	0	N/A
Jul - Sep 2005	7	5	4	2	N/A	0	0	1	N/A
Oct - Dec 2005	7	2	3	0	N/A	0	0	0	N/A
Jan - Mar 2006	7	N/A	3	1	1	1	0	0	N/A
Apr - Jun 2006	7	N/A	3	2	2	0	1	0	N/A
Jul - Sep 2006	4	N/A	5	2	3	1	0	0	N/A
Oct - Dec 2006	12	N/A	5	0	3	1	0	0	N/A
Jan - Mar 2007	2	N/A	2	3	3	0	0	0	N/A
Apr - Jun 2007	8	N/A	5	0	1	2	0	0	N/A
Jul - Sep 2007	8	N/A	3	1	3	0	2	0	N/A

### 12 month periods to the end of September 2007 and September 2006

Oct 2006 - Sep 2007	30	N/A	15	4	10	3	2	0	N/A
Oct 2005 - Sep 2006	25	N/A	14	5	N/A	2	1	0	N/A
% change	20.0	N/A	7.1	-20.0	N/A	50.0	100.0	-	N/A

### Deaths from crashes involving heavy rigid trucks by State/Territory by road user - 12 months to the end of September 2007

	NSW	Vic	Qld	SA	WA	Tas	NT	ACT	Australia
Drivers <sup>a</sup>	9	N/A	11	1	8	1	2	0	N/A
Passengers <sup>a</sup>	8	N/A	2	0	1	2	0	0	N/A
Pedestrians	8	N/A	1	1	1	0	0	0	N/A
Motor cyclists <sup>b</sup>	2	N/A	0	0	0	0	0	0	N/A
Cyclists	3	N/A	1	2	0	0	0	0	N/A
All road users <sup>c</sup>	30	N/A	15	4	10	3	2	0	N/A

<sup>a</sup> Includes drivers/passengers of light vehicles

<sup>b</sup> Includes pillion passengers

<sup>c</sup> Includes road users not separately specified

### Deaths from crashes involving heavy rigid trucks by State/Territory by crash type - 12 months to the end of September 2007

	NSW	Vic	Qld	SA	WA	Tas	NT	ACT	Australia
Pedestrian crashes	8	N/A	1	1	1	0	0	0	N/A
Other single vehicle crashes	2	N/A	4	1	0	0	0	0	N/A
Multiple vehicle crashes	20	N/A	10	2	9	3	2	0	N/A
All crash types	30	N/A	15	4	10	3	2	0	N/A

## Buses - Fatal Crashes

### Fatal crashes involving buses by State/Territory by quarter - Five years to the end of September 2007

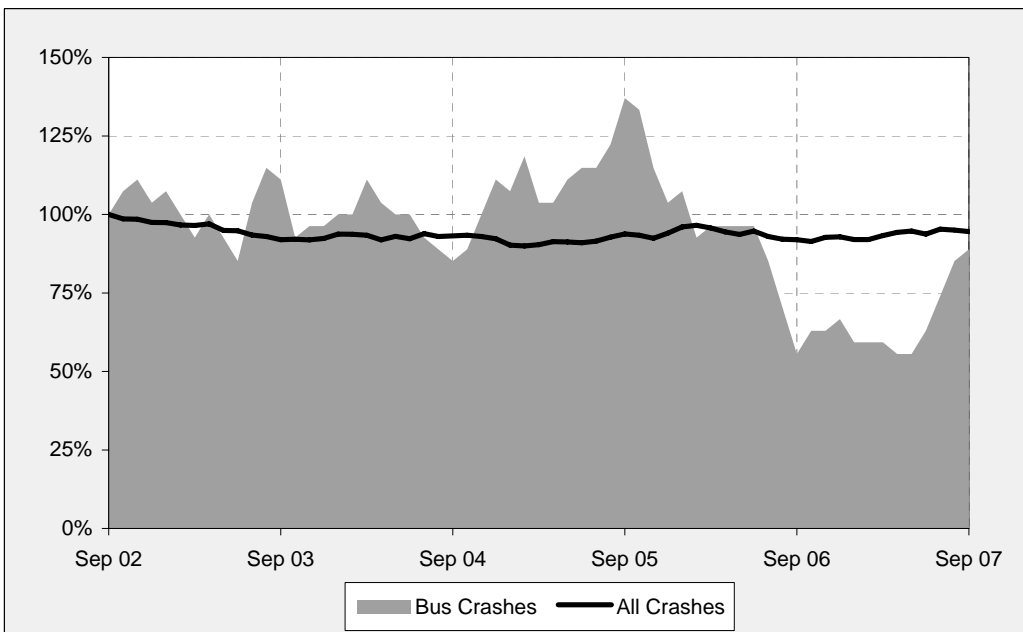
	NSW	Vic	Qld	SA	WA	Tas	NT	ACT	<b>Australia</b>
Oct - Dec 2002	2	2	2	1	1	0	0	0	8
Jan - Mar 2003	4	0	1	0	0	0	0	0	5
Apr - Jun 2003	2	2	2	0	0	1	0	0	7
Jul - Sep 2003	3	1	1	2	2	0	1	0	10
Oct - Dec 2003	4	0	0	0	0	0	0	0	4
Jan - Mar 2004	3	2	2	1	0	0	0	1	9
Apr - Jun 2004	1	1	2	0	0	0	0	0	4
Jul - Sep 2004	3	1	1	1	0	0	0	0	6
Oct - Dec 2004	8	2	1	0	0	0	0	0	11
Jan - Mar 2005	5	1	0	0	1	0	0	0	7
Apr - Jun 2005	5	0	2	0	0	0	0	0	7
Jul - Sep 2005	4	2	5	1	0	0	0	0	12
Oct - Dec 2005	1	1	0	0	0	0	0	0	2
Jan - Mar 2006	2	2	1	0	0	0	0	0	5
Apr - Jun 2006	3	0	2	1	0	1	0	0	7
Jul - Sep 2006	0	0	1	0	0	0	0	0	1
Oct - Dec 2006	2	1	1	0	1	0	0	0	5
Jan - Mar 2007	0	1	2	0	0	0	0	0	3
Apr - Jun 2007	4	1	3	0	0	0	0	0	8
Jul - Sep 2007	4	2	1	1	0	0	0	0	8

### 12 month periods to the end of September 2007 and September 2006

Oct 2006 - Sep 2007	10	5	7	1	1	0	0	0	24
Oct 2005 - Sep 2006	6	3	4	1	0	1	0	0	15
% change	<b>66.7</b>	<b>66.7</b>	<b>75.0</b>	<b>0.0</b>	<b>-</b>	<b>-100.0</b>	<b>-</b>	<b>-</b>	<b>60.0</b>

### Annual count of fatal crashes involving buses in Australia - Five years to the end of September 2007

Each point shows the number of fatal crashes in the preceding 12 months expressed as a percentage of the number of fatal crashes in the 12 months to the end of September 2002.



## Buses - Deaths

### Deaths from crashes involving buses by State/Territory by quarter - Five years to the end of September 2007

	NSW	Vic	Qld	SA	WA	Tas	NT	ACT	Australia
Oct - Dec 2002	2	2	2	4	2	0	0	0	12
Jan - Mar 2003	5	0	1	0	0	0	0	0	6
Apr - Jun 2003	2	2	2	0	0	1	0	0	7
Jul - Sep 2003	4	1	1	3	2	0	1	0	12
Oct - Dec 2003	4	0	0	0	0	0	0	0	4
Jan - Mar 2004	3	2	2	1	0	0	0	1	9
Apr - Jun 2004	1	1	2	0	0	0	0	0	4
Jul - Sep 2004	3	1	1	1	0	0	0	0	6
Oct - Dec 2004	8	2	1	0	0	0	0	0	11
Jan - Mar 2005	5	1	0	0	1	0	0	0	7
Apr - Jun 2005	9	0	2	0	0	0	0	0	11
Jul - Sep 2005	6	2	7	1	0	0	0	0	16
Oct - Dec 2005	1	2	0	0	0	0	0	0	3
Jan - Mar 2006	2	2	1	0	0	0	0	0	5
Apr - Jun 2006	3	0	2	1	0	1	0	0	7
Jul - Sep 2006	0	0	1	0	0	0	0	0	1
Oct - Dec 2006	2	1	1	0	1	0	0	0	5
Jan - Mar 2007	0	1	2	0	0	0	0	0	3
Apr - Jun 2007	4	1	3	0	0	0	0	0	8
Jul - Sep 2007	4	2	1	1	0	0	0	0	8

### 12 month periods to the end of September 2007 and September 2006

Oct 2006 - Sep 2007	10	5	7	1	1	0	0	0	24
Oct 2005 - Sep 2006	6	4	4	1	0	1	0	0	16
% change	66.7	25.0	75.0	0.0	-	-100.0	-	-	50.0

### Deaths from crashes involving buses by State/Territory by road user - 12 months to the end of September 2007

	NSW	Vic	Qld	SA	WA	Tas	NT	ACT	Australia
Drivers <sup>a</sup>	3	2	1	1	0	0	0	0	7
Passengers <sup>a</sup>	2	1	0	0	1	0	0	0	4
Pedestrians	3	2	2	0	0	0	0	0	7
Motor cyclists <sup>b</sup>	1	0	2	0	0	0	0	0	3
Cyclists	1	0	2	0	0	0	0	0	3
All road users <sup>c</sup>	10	5	7	1	1	0	0	0	24

<sup>a</sup> Includes drivers/passengers of light vehicles

<sup>b</sup> Includes pillion passengers

<sup>c</sup> Includes road users not separately specified

### Deaths from crashes involving buses by State/Territory by crash type - 12 months to the end of September 2007

	NSW	Vic	Qld	SA	WA	Tas	NT	ACT	Australia
Pedestrian crashes	3	2	2	0	0	0	0	0	7
Other single vehicle crashes	0	1	0	0	1	0	0	0	2
Multiple vehicle crashes	7	2	5	1	0	0	0	0	15
All crash types	10	5	7	1	1	0	0	0	24