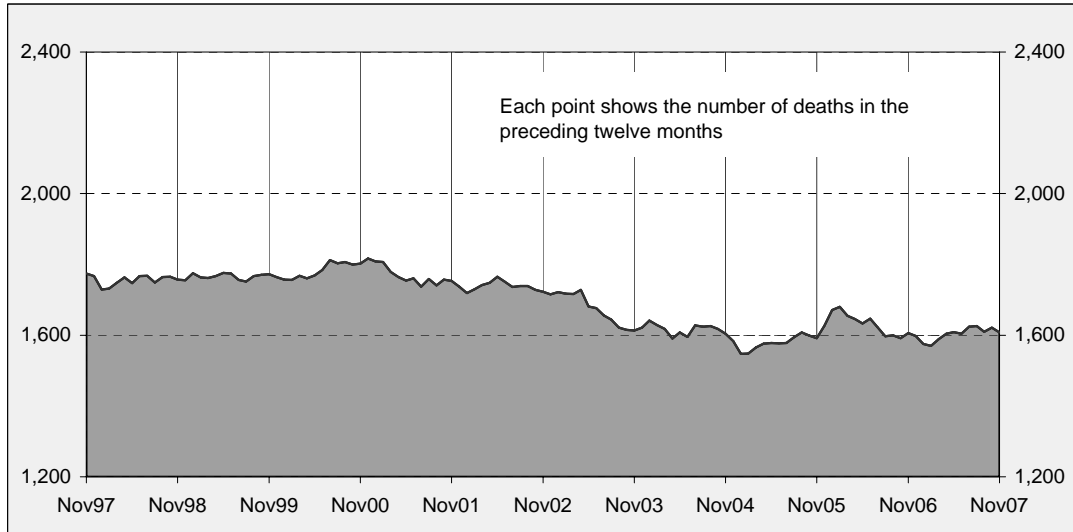




## Australian road deaths for 12 months to date - last 10 years



### Inquiries

For further information about data in this bulletin, contact:

Road Safety Research and Statistics  
Australian Transport Safety Bureau  
PO Box 967,  
Civic Square, ACT 2608  
Email: [research@atsb.gov.au](mailto:research@atsb.gov.au)  
Internet: [www.atsb.gov.au](http://www.atsb.gov.au)

### Data Sources

The data presented here are obtained from the following sources:

- Roads and Traffic Authority, NSW
- Vicroads
- Queensland Transport
- Department for Transport, Energy and Infrastructure, South Australia
- Western Australia Police
- Department of Infrastructure, Energy and Resources, Tasmania
- Department of Planning and Infrastructure, Northern Territory
- Territory and Municipal Services, ACT

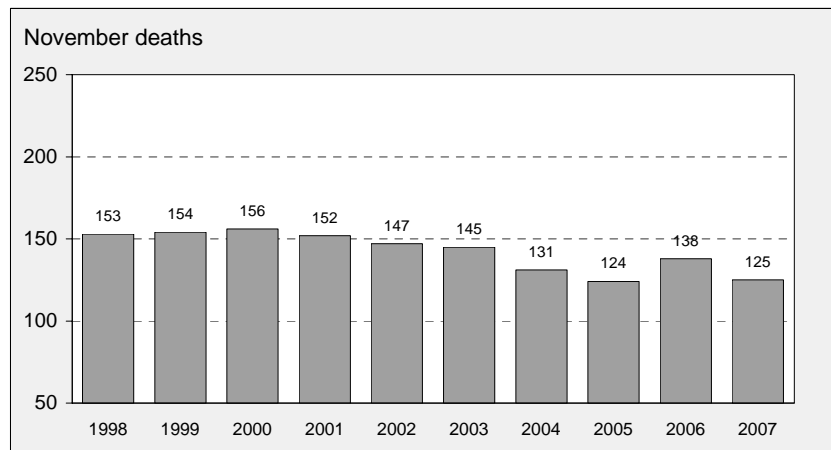
### Note

Road death statistics for recent months are preliminary and subject to revision. They include any deaths occurring within 30 days of a crash stemming from injuries received in the crash.

### About the Australian Transport Safety Bureau

The Australian Transport Safety Bureau is an operationally independent body within the Australian Government Department of Infrastructure, Transport, Regional Development and Local Government.

## Australian road deaths for November - last 10 years



## This month's key figures

There were a total of 125 road deaths in November 2007.  
- this is a 9.4 per cent decrease from the November 2006 figure.

There have been 1,454 road deaths in 2007 to the end of November.  
- this is a 0.7 per cent increase over the same 11 month period in 2006.

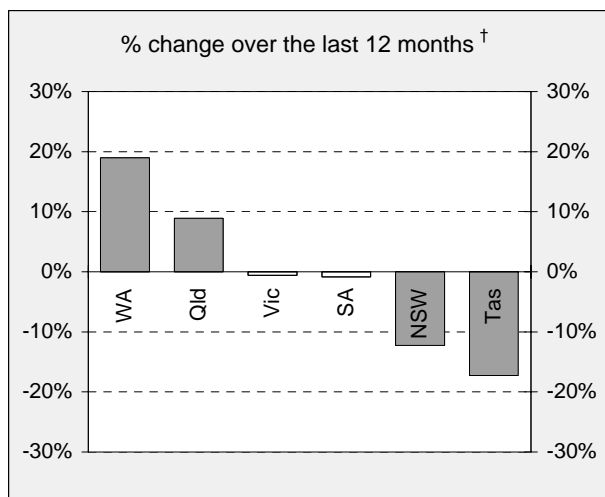
# NUMBER OF ROAD CRASH DEATHS IN EACH STATE / TERRITORY

Road deaths by State/Territory for month, year to date, and twelve months - period ended November 2007 and period ended November 2006

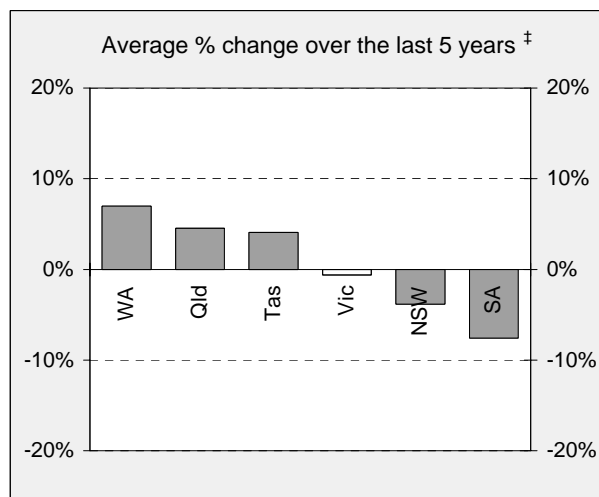
	NSW	Vic	Qld	SA	WA	Tas	NT	ACT	Australia
<b>Current month</b>									
Nov 2007	34	25	26	13	20	2	4	1	125
Nov 2006	38	31	30	8	17	9	4	1	138
% change	-10.5	-19.4	-13.3	62.5	17.6	-77.8	0.0	0.0	-9.4
<b>Year to date</b>									
Jan 2007 - Nov 2007	408	293	332	110	209	43	46	13	1,454
Jan 2006 - Nov 2006	460	298	300	107	180	50	39	10	1,444
% change	-11.3	-1.7	10.7	2.8	16.1	-14.0	17.9	30.0	0.7
<b>12-months to date</b>									
Dec 2006 - Nov 2007	444	332	367	120	232	48	49	16	1,608
Dec 2005 - Nov 2006	506	334	337	121	195	58	44	11	1,606
Difference	-62	-2	30	-1	37	-10	5	5	2
% change	-12.3	-0.6	8.9	-0.8	19.0	-17.2	11.4	45.5	0.1
<b>Average annual % change over 5 years<sup>a</sup></b>									
Dec 2002 to Nov 2007	-3.8	-0.6	4.5	-7.6	7.0	4.1	0.3	12.2	0.0

<sup>a</sup> Average annual percentage change based on the exponential trend for the last five 12-month periods

## Percentage change in deaths in each State



<sup>†</sup> Percentage change between the 12-month periods of Dec 2005 - Nov 2006 and Dec 2006 - Nov 2007



<sup>‡</sup> Average annual percentage change based on the exponential trend for the last five 12-month periods

# NUMBER OF DEATHS IN EACH ROAD USER GROUP

Road deaths by road user group and gender for twelve months ended November 2007 and twelve months ended November 2006

	Drivers	Passengers	Pedestrians	Motor-cyclists <sup>a</sup>	Cyclists	All road users <sup>b</sup>
<b>Males</b>						
Dec 2006 - Nov 2007	637	167	111	224	40	1,179
Dec 2005 - Nov 2006	573	207	157	223	29	1,189
% change	11.2	-19.3	-29.3	0.4	37.9	-0.8
<b>Females</b>						
Dec 2006 - Nov 2007	167	156	85	16	4	428
Dec 2005 - Nov 2006	175	142	79	14	5	415
% change	-4.6	9.9	7.6	14.3	-20.0	3.1
<b>Persons<sup>c</sup></b>						
Dec 2006 - Nov 2007	805	323	196	240	44	1,608
Dec 2005 - Nov 2006	749	350	236	237	34	1,606
% change	7.5	-7.7	-16.9	1.3	29.4	0.1
<b>Average annual % change over 5 years<sup>d</sup></b>						
Dec 2002 to Nov 2007	1.2	-5.4	-2.5	7.1	8.0	0.0

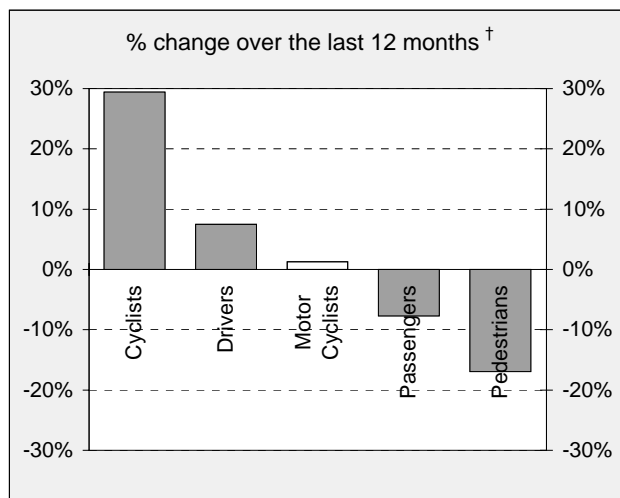
a Includes pillion passengers

b Includes road users not separately specified

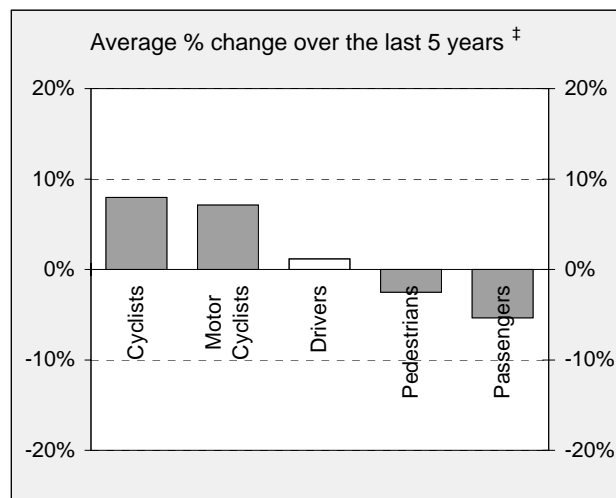
c Includes road users with unstated gender

d Average annual percentage change based on the exponential trend for the last five 12-month period.

## Percentage change in deaths in each road user group



† Percentage change between the 12-month periods of Dec 2005 - Nov 2006 and Dec 2006 - Nov 2007

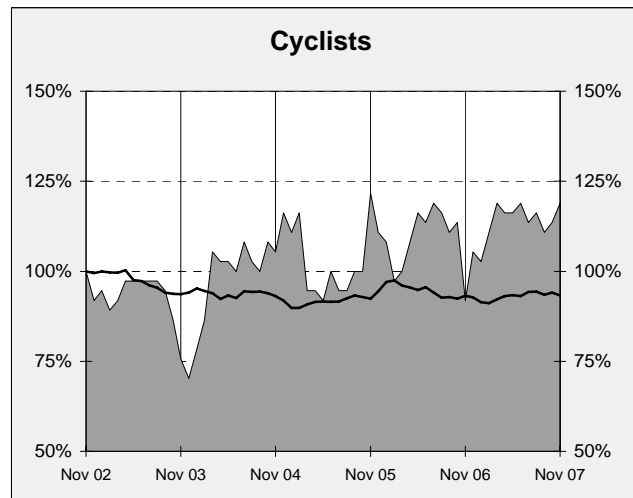
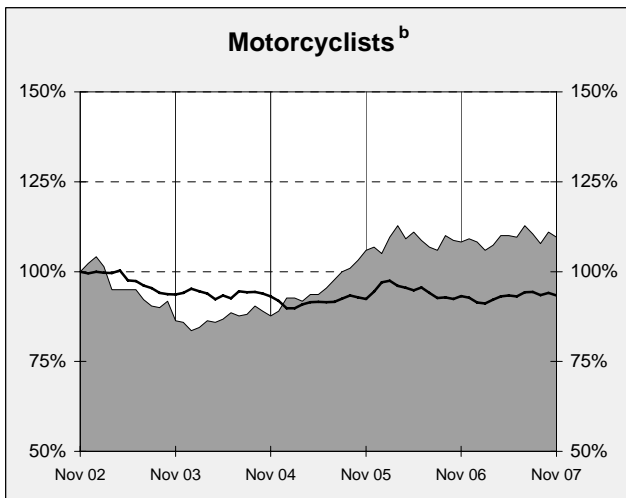
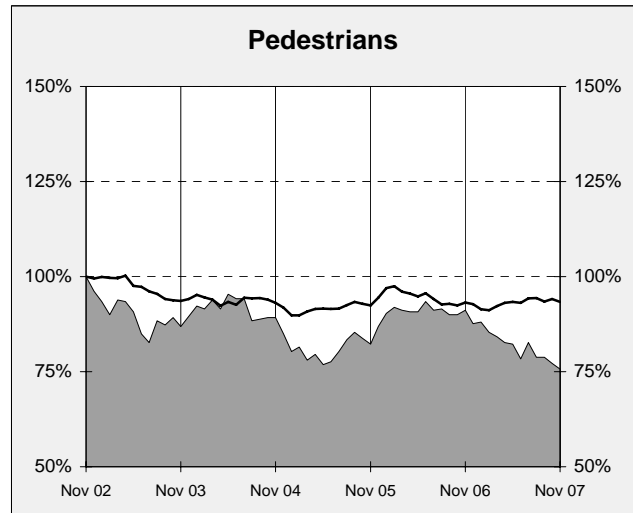
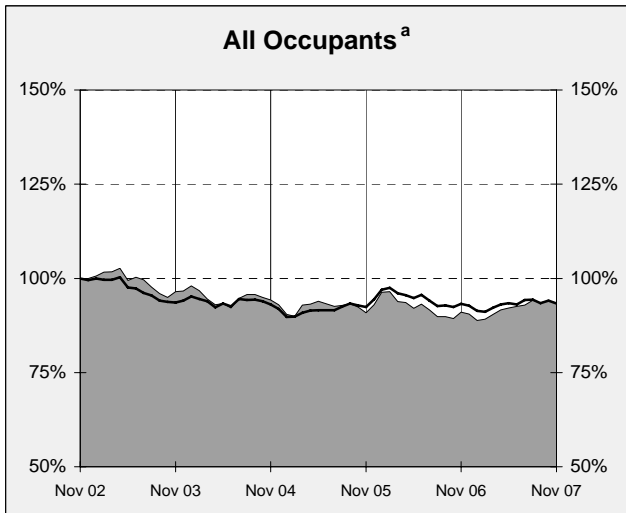
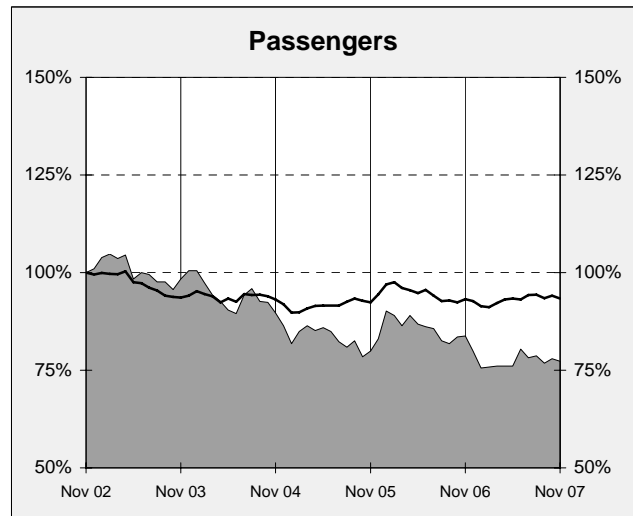
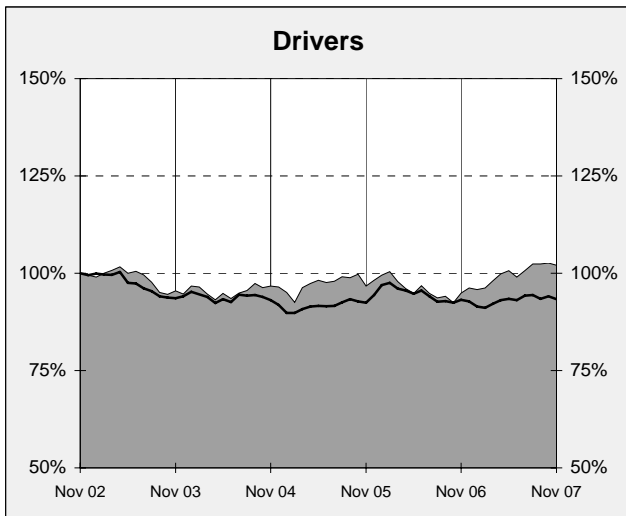
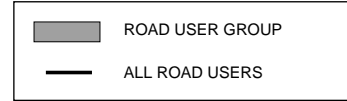


‡ Average annual percentage change based on the exponential trend for the last five 12-month periods

# DEATHS IN EACH ROAD USER GROUP - TRENDS

## Annual deaths in each road user group - last 5 years

The number shown at each month represents the number of deaths in the preceding 12 months expressed as a percentage of the number of deaths in the 12 months to November 2002.



a Comprises drivers and passengers

b Includes pillion passengers

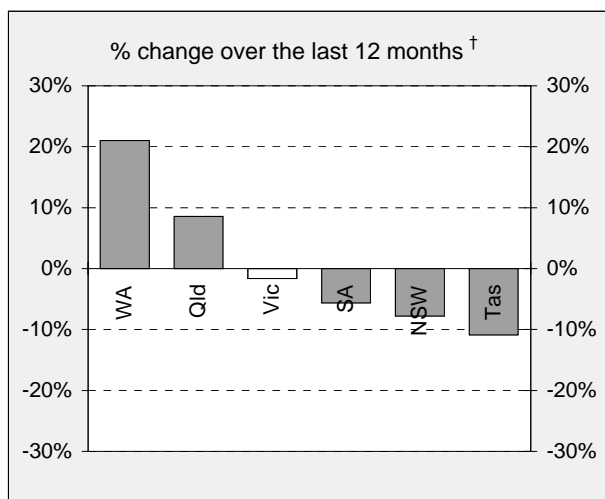
# NUMBER OF FATAL ROAD CRASHES IN EACH STATE / TERRITORY

Fatal crashes by State/Territory for month, year to date and twelve month-period ended November 2007 and period ended November 2006

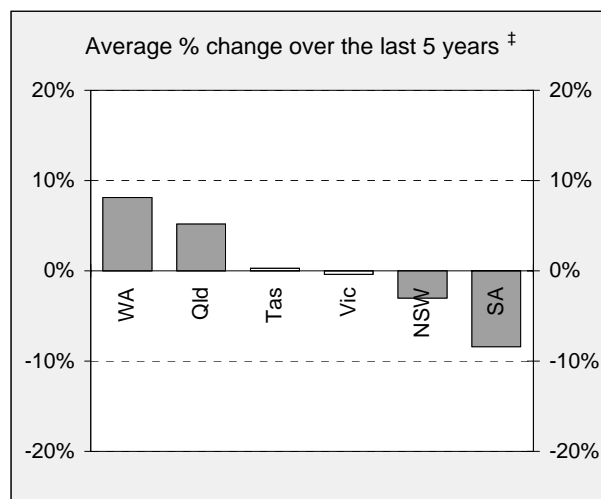
	NSW	Vic	Qld	SA	WA	Tas	NT	ACT	Australia
<b>Current month</b>									
Nov 2007	31	24	25	9	18	2	3	1	113
Nov 2006	35	29	28	7	17	8	4	1	129
% change	-11.4	-17.2	-10.7	28.6	5.9	-75.0	-25.0	0.0	-12.4
<b>Year to date</b>									
Jan 2007 - Nov 2007	381	259	311	94	191	37	41	13	1327
Jan 2006 - Nov 2006	414	270	281	97	162	39	36	10	1309
% change	-8.0	-4.1	10.7	-3.1	17.9	-5.1	13.9	30.0	1.4
<b>12 months to date</b>									
Dec 2006 - Nov 2007	416	298	343	101	213	41	44	15	1,471
Dec 2005 - Nov 2006	451	303	316	107	176	46	41	11	1,451
% change	-7.8	-1.7	8.5	-5.6	21.0	-10.9	7.3	36.4	1.4
<b>Average annual % change over 5 years<sup>a</sup></b>									
Dec 2002 to Nov 2007	-3.0	-0.4	5.2	-8.4	8.1	0.3	1.6	13.4	0.4

<sup>a</sup> Average annual percentage change based on the exponential trend for the last five 12-month periods

## Percentage change in fatal crashes in each State



† Percentage change between the 12-month periods of Dec 2005 - Nov 2006 and Dec 2006 - Nov 2007



‡ Average annual percentage change based on the exponential trend for the last five 12-month periods

# FATAL CRASHES INVOLVING TRUCKS OR BUSES

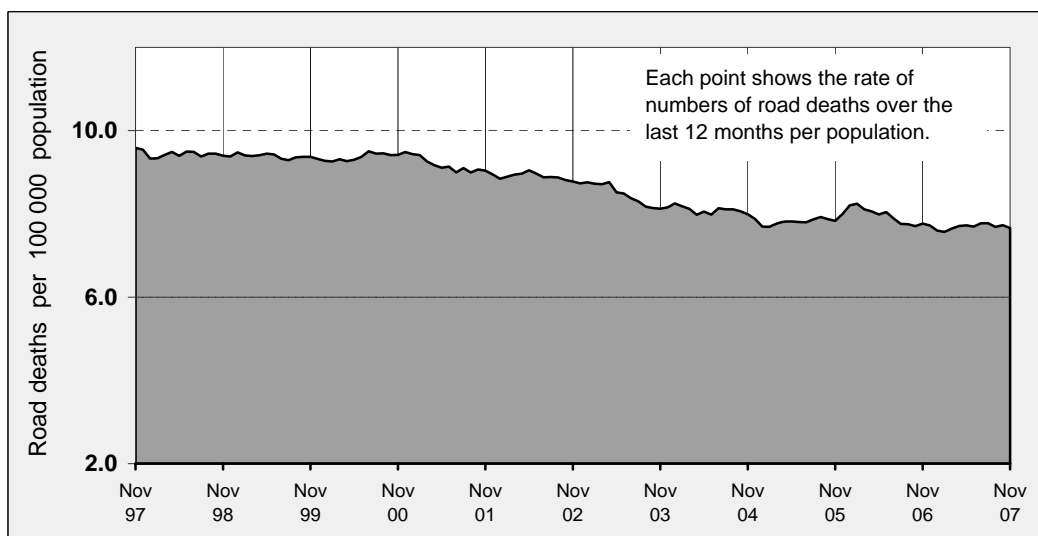
Analysis of fatal crashes involving heavy vehicles is now published in a separate quarterly bulletin on the ATSB website at [www.atsb.gov.au](http://www.atsb.gov.au).

## ROAD DEATH RATES

### Road deaths per 100 000 population

	NSW	Vic	Qld	SA	WA	Tas	NT	ACT	Australia
<b>12-months to date</b>									
Dec 2006 - Nov 2007	6.4	6.4	8.8	7.6	11.0	9.7	22.8	4.7	7.7
Dec 2005 - Nov 2006	7.4	6.5	8.3	7.7	9.5	11.8	20.9	3.3	7.8
<b>Calendar year</b>									
2006	7.3	6.6	8.2	7.5	9.9	11.2	19.9	3.9	7.7
2001	8.0	9.2	8.9	10.1	8.7	12.9	25.3	5.0	8.9

### Australian road deaths per year per 100 000 population - moving 12-monthly data



## CHARACTERISTICS OF FATAL CRASHES

Proportion (per cent) of fatal crashes by speed limit, crash type, time of day, and time of week.  
Two years ended November 2007 and two years ended November 2002

	Speed limit (km/h) <sup>a</sup>			Time of Day	
	Up to 60	65-95	100+	Day	Night <sup>b</sup>
Dec 2005 - Nov 2007	32.3%	22.2%	45.5%	56.6%	43.4%
Dec 2000 - Nov 2002	32.3%	21.1%	46.6%	55.6%	44.4%
	Crash Type			Time of week	
	Pedestrian crash	Other single veh. Crash	Other multiple veh. crash	Week day	Week- end <sup>c</sup>
Dec 2005 - Nov 2007	14.5%	47.2%	38.3%	58.7%	41.3%
Dec 2000 - Nov 2002	17.2%	43.0%	39.8%	60.0%	40.0%

a Excludes ACT

b 6:00 pm to 5:59 am

c 6:00 pm Friday to 5:59 am Monday

# ROAD DEATHS BY AGE, GENDER AND ROAD USER GROUP

## Road deaths by age and gender

	0-16 years	17-20 years	21-25 years	26-39 years	40-59 years	60+ years	All deaths <sup>a</sup>
<b>Males</b>							
Dec 2006 - Nov 2007	56	148	154	329	292	189	1,179
Dec 2005 - Nov 2006	72	175	163	331	256	190	1,189
% change	-22.2	-15.4	-5.5	-0.6	14.1	-0.5	-0.8
<b>Females</b>							
Dec 2006 - Nov 2007	44	45	44	74	94	118	428
Dec 2005 - Nov 2006	48	49	43	68	102	105	415
% change	-8.3	-8.2	2.3	8.8	-7.8	12.4	3.1
<b>Persons<sup>b</sup></b>							
Dec 2006 - Nov 2007	100	193	198	403	386	307	1,608
Dec 2005 - Nov 2006	122	224	206	399	358	295	1,606
% change	-18.0	-13.8	-3.9	1.0	7.8	4.1	0.1

a Includes road users with unstated age

b Includes road users with unstated gender

## Road deaths by age for each main road user group

	0-16 years	17-20 years	21-25 years	26-39 years	40-59 years	60+ years	All deaths <sup>a</sup>
<b>Occupants<sup>b</sup></b>							
Dec 2006 - Nov 2007	64	160	137	275	257	224	1,128
Dec 2005 - Nov 2006	79	184	153	257	232	194	1,099
% change	-19.0	-13.0	-10.5	7.0	10.8	15.5	2.6
<b>Motorcyclists<sup>c</sup></b>							
Dec 2006 - Nov 2007	9	20	44	81	65	17	240
Dec 2005 - Nov 2006	5	26	39	92	66	9	237
% change	80.0	-23.1	12.8	-12.0	-1.5	88.9	1.3
<b>Pedestrians</b>							
Dec 2006 - Nov 2007	19	11	16	37	46	62	196
Dec 2005 - Nov 2006	31	13	12	45	49	84	236
% change	-38.7	-15.4	33.3	-17.8	-6.1	-26.2	-16.9

a Includes road users with unstated age

b Comprises drivers and passengers

c Includes pillion passengers