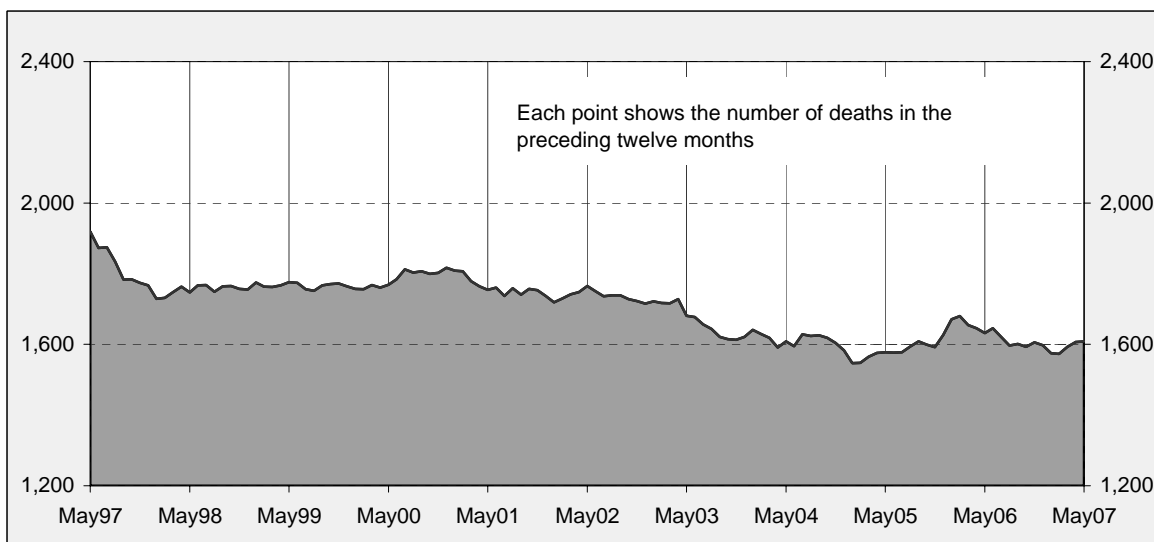




Australian road deaths for 12 months to date - last 10 years



Inquiries

For further information about data in this bulletin, contact:

Road Safety Research and Statistics
Australian Transport Safety Bureau
PO Box 967,
Civic Square, ACT 2608
Email: research@atsb.gov.au
Internet: www.atsb.gov.au

Data Sources

The data presented here are obtained from the following sources:

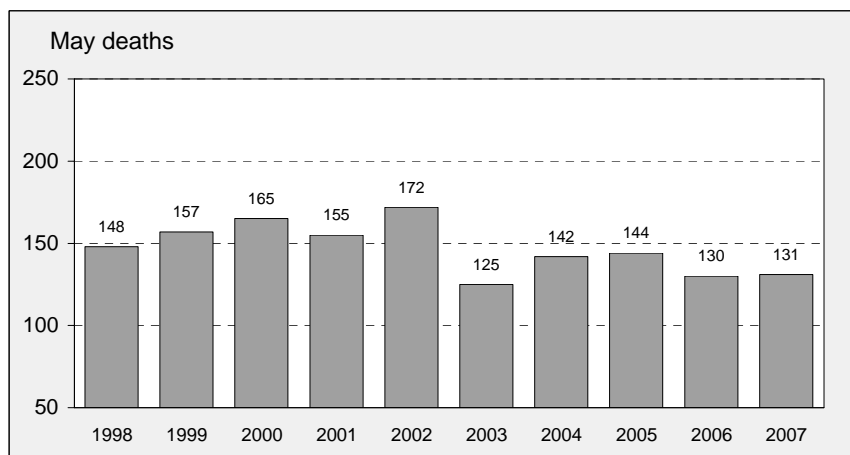
- Roads and Traffic Authority, NSW
- Vicroads
- Queensland Transport
- Department for Transport, Energy and Infrastructure, South Australia
- Western Australia Police
- Department of Infrastructure, Energy and Resources, Tasmania
- Department of Planning and Infrastructure, Northern Territory
- Territory and Municipal Services, ACT

Note

Road death statistics for recent months are preliminary and subject to revision. They include any deaths occurring within 30 days of a crash stemming from injuries received in the crash.

The Australian Transport Safety Bureau is an operationally independent body within the Australian Government Department of Transport and Regional Services.

Australian road deaths for May - last 10 years



This month's key figures

There were a total of 131 road deaths in May 2007.
- this is a 0.8% increase over the May 2006 figure.

There have been 678 road deaths in 2007 to the end of May.
- this is a 1.5% increase over the same 5 month period in 2006.

NUMBER OF ROAD CRASH DEATHS IN EACH STATE / TERRITORY

Road deaths by State/Territory for month, year to date, and twelve months - period ended May 2007 and period ended May 2006

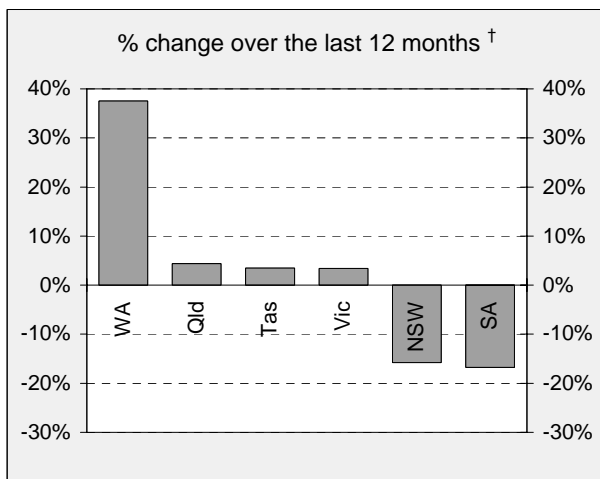
	NSW	Vic	Qld	SA	WA	Tas	NT	ACT	Australia
Current month									
May 2007	29	27	41	7	21	2	3	1	131
May 2006	37	27	29	12	15	8	1	1	130
% change	-21.6	0.0	41.4	-41.7	40.0	-75.0	200.0	0.0	0.8
Year to date									
Jan 2007 - May 2007	187	131	153	52	106	29	14	6	678
Jan 2006 - May 2006	236	134	129	55	77	23	11	3	668
% change	-20.8	-2.2	18.6	-5.5	37.7	26.1	27.3	100.0	1.5
12-months to date									
Jun 2006 - May 2007	449	334	359	114	231	60	45	16	1,608
Jun 2005 - May 2006	533	323	344	137	168	58	51	18	1,632
Difference	-84	11	15	-23	63	2	-6	-2	-24
% change	-15.8	3.4	4.4	-16.8	37.5	3.4	-11.8	-11.1	-1.5

Average annual % change over 5 years^a

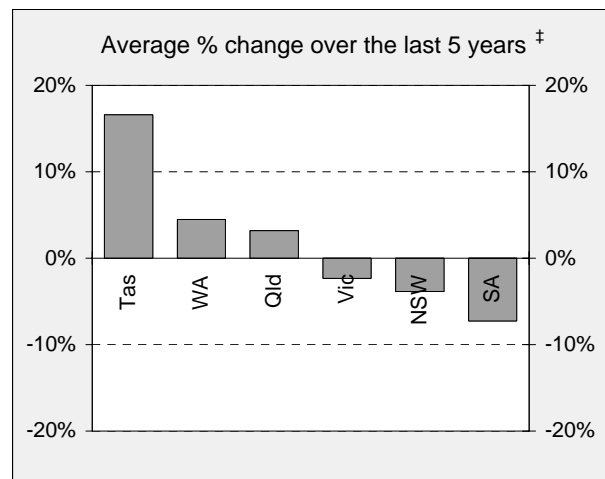
Jun 2002 to May 2007	-3.9	-2.3	3.2	-7.3	4.5	16.6	-4.5	13.2	-0.7
----------------------	------	------	-----	------	-----	------	------	------	------

^a Average annual percentage change based on the exponential trend for the last five 12 -month periods

Percentage change in deaths in each State



[†] Percentage change between the 12-month periods of Jun 2005 - May 2006 and Jun 2006 - May 2007



[‡] Average annual percentage change based on the exponential trend for the last five 12-month periods

NUMBER OF DEATHS IN EACH ROAD USER GROUP

Road deaths by road user group and gender for twelve months ended May 2007 and twelve months ended May 2006

	Drivers	Passengers	Pedestrians	Motor-cyclists ^a	Cyclists	All road users ^b
Males						
Jun 2006 - May 2007	614	178	137	226	40	1,195
Jun 2005 - May 2006	573	192	147	232	34	1,179
% change	7.2	-7.3	-6.8	-2.6	17.6	1.4
Females						
Jun 2006 - May 2007	181	134	72	14	4	405
Jun 2005 - May 2006	174	170	88	10	9	451
% change	4.0	-21.2	-18.2	40.0	-55.6	-10.2
Persons^c						
Jun 2006 - May 2007	798	313	210	240	44	1,608
Jun 2005 - May 2006	747	364	235	242	43	1,632
% change	6.8	-14.0	-10.6	-0.8	2.3	-1.5
Average annual % change over 5 years^d						
Jun 2002 to May 2007	0.2	-5.7	-2.7	5.4	5.4	-0.7

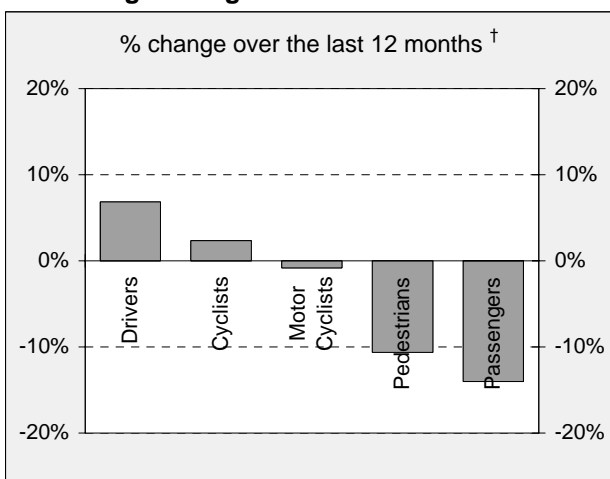
a Includes pillion passengers

b Includes road users not separately specified

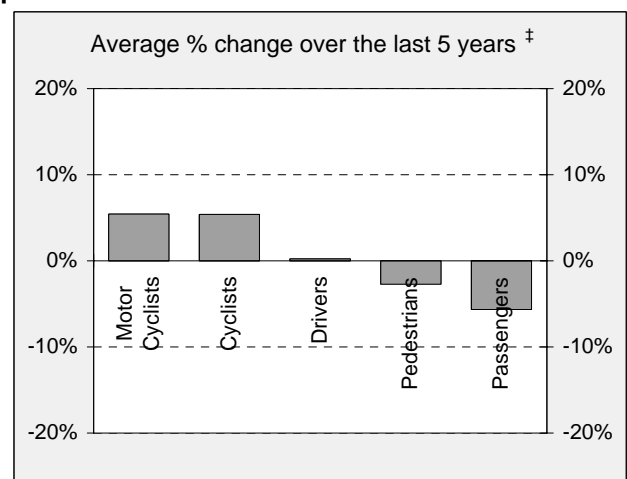
c Includes road users with unstated gender

d Average annual percentage change based on the exponential trend for the last five 12-month period.

Percentage change in deaths in each road user group



† Percentage change between the 12-month periods of Jun 2005 - May 2006 and Jun 2006 - May 2007

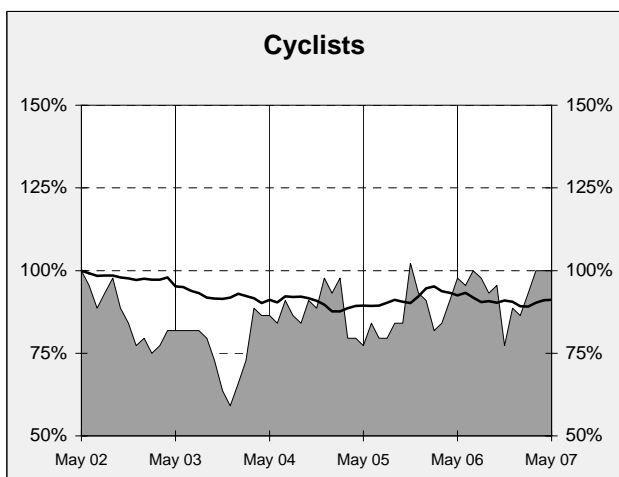
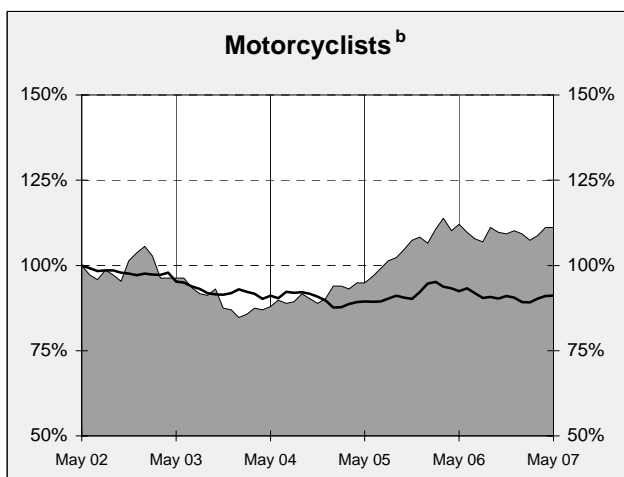
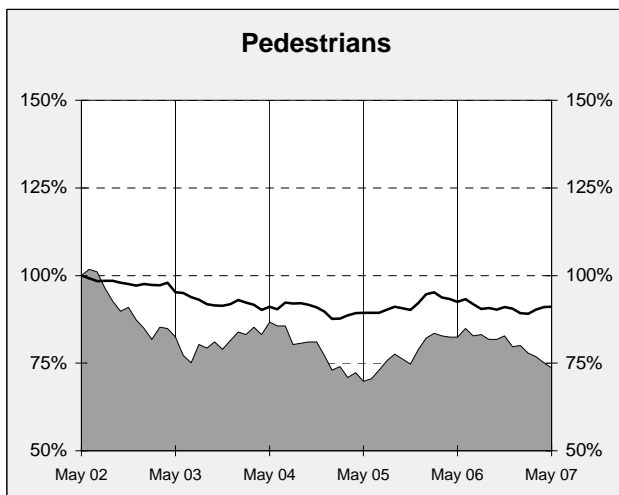
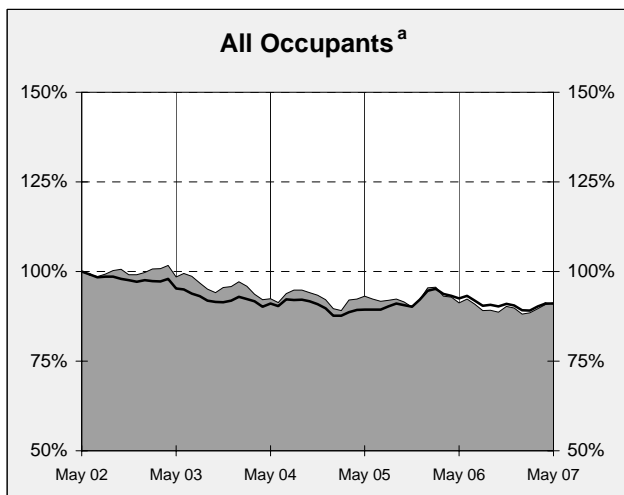
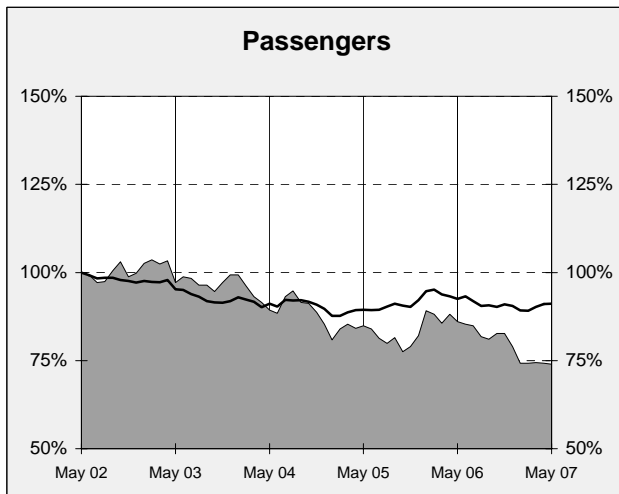
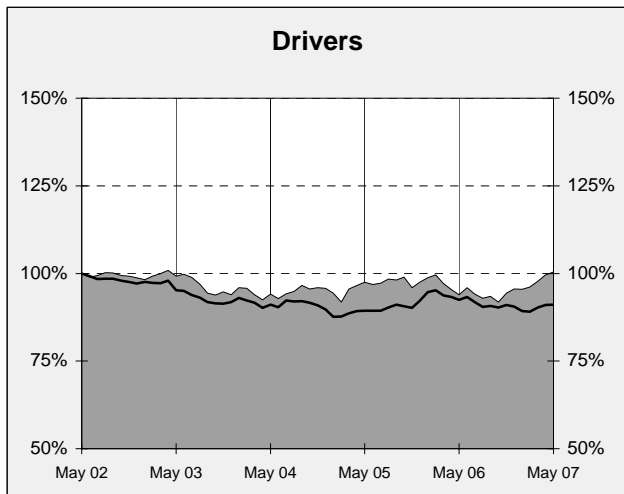
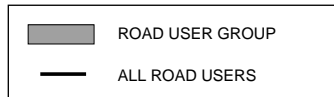


‡ Average annual percentage change based on the exponential trend for the last five 12-month periods

DEATHS IN EACH ROAD USER GROUP - TRENDS

Annual deaths in each road user group - last 6 years

The number shown at each month represents the number of deaths in the preceding 12 months expressed as a percentage of the number of deaths in the 12 months to May 2002.



a Comprises drivers and passengers

b Includes pillion passengers

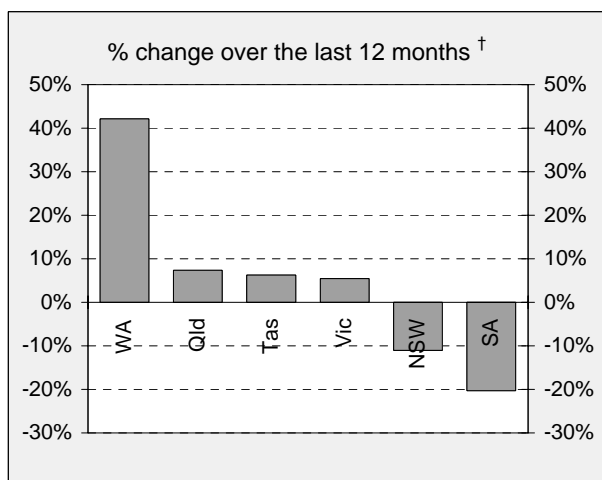
NUMBER OF FATAL ROAD CRASHES IN EACH STATE / TERRITORY

Fatal crashes by State/Territory for month, year to date and twelve month-period ended May 2007 and period ended May 2006

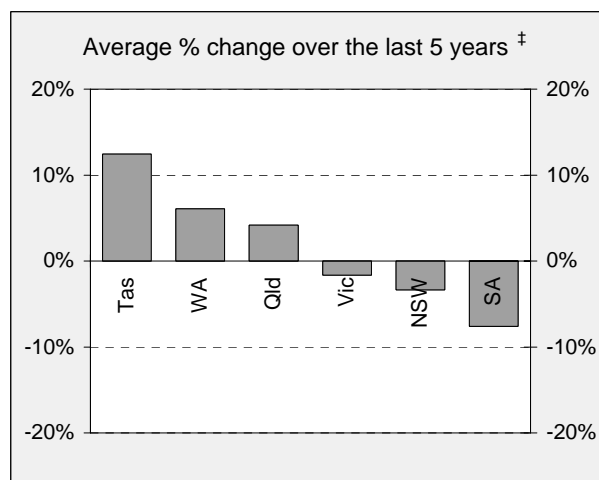
	NSW	Vic	Qld	SA	WA	Tas	NT	ACT	Australia
Current month									
May 2007	28	25	38	6	19	2	3	1	122
May 2006	35	24	27	12	14	5	1	1	119
% change	-20.0	4.2	40.7	-50.0	35.7	-60.0	200.0	0.0	2.5
Year to date									
Jan 2007 - May 2007	175	120	142	45	100	24	13	6	625
Jan 2006 - May 2006	208	120	120	51	67	15	11	3	595
% change	-15.9	0.0	18.3	-11.8	49.3	60.0	18.2	100.0	5.0
12 months to date									
Jun 2006 - May 2007	418	309	335	98	216	51	41	15	1,483
Jun 2005 - May 2006	470	293	312	123	152	48	49	17	1,464
% change	-11.1	5.5	7.4	-20.3	42.1	6.3	-16.3	-11.8	1.3
Average annual % change over 5 years^a									
Jun 2002 to May 2007	-3.4	-1.7	4.2	-7.6	6.1	12.4	0.8	18.4	0.0

^a Average annual percentage change based on the exponential trend for the last five 12-month periods

Percentage change in fatal crashes in each State



† Percentage change between the 12-month periods of Jun 2005 - May 2006 and Jun 2006 - May 2007



‡ Average annual percentage change based on the exponential trend for the last five 12-month periods

FATAL CRASHES INVOLVING TRUCKS OR BUSES

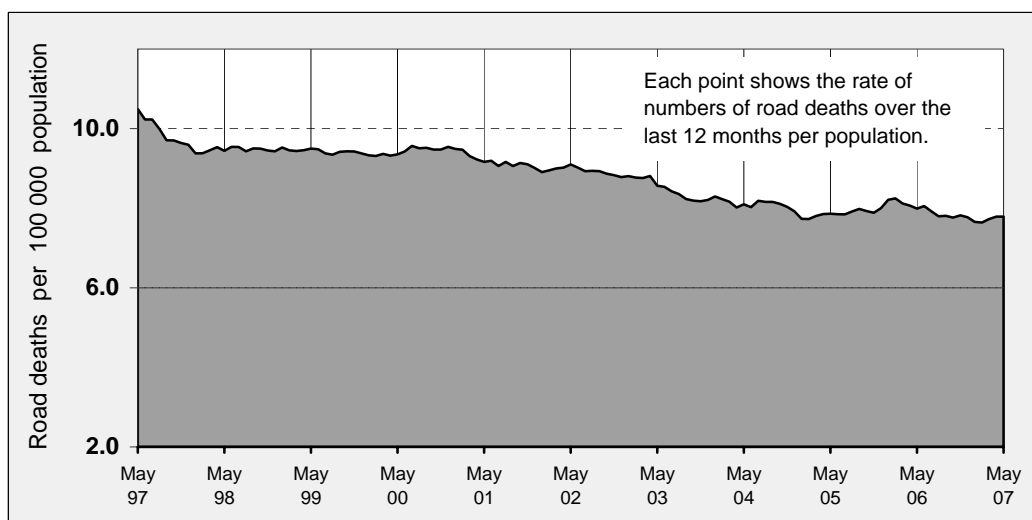
Analysis of fatal crashes involving heavy vehicles will henceforth appear in a separate bulletin on the ATSB website at www.atsb.gov.au. The first issue is in production.

ROAD DEATH RATES

Road deaths per 100 000 population

	NSW	Vic	Qld	SA	WA	Tas	NT	ACT	Australia
12-months to date									
Jun 2006 - May 2007	6.6	6.6	8.9	7.3	11.3	12.3	21.8	4.9	7.8
Jun 2005 - May 2006	7.8	6.3	8.5	8.8	8.2	11.9	24.7	5.5	7.9
Calendar year									
2006	7.3	6.6	8.3	7.5	9.8	11.0	20.3	4.0	7.8
2001	8.0	9.2	8.9	10.1	8.7	12.9	25.3	5.0	8.9

Australian road deaths per year per 100 000 population - moving 12-monthly data



CHARACTERISTICS OF FATAL CRASHES

Proportion (per cent) of fatal crashes by speed limit, crash type, time of day, and time of week. Two years ended May 2007 and two years ended May 2002

	Speed limit (km/h) ^a			Time of Day	
	Up to 60	65-95	100+	Day	Night ^b
Jun 2005 - May 2007	32.6%	21.6%	45.7%	55.9%	44.1%
Jun 2000 - May 2002	33.1%	20.7%	46.1%	56.0%	44.0%
	Crash Type			Time of week	
	Pedestrian crash	Other single veh. Crash	Other multiple veh. crash	Week day	Week-end ^c
Jun 2005 - May 2007	14.8%	46.6%	38.6%	57.7%	42.3%
Jun 2000 - May 2002	17.5%	42.2%	40.3%	60.2%	39.8%

^a Excludes ACT

^b 6:00 pm to 5:59 am

^c 6:00 pm Friday to 5:59 am Monday