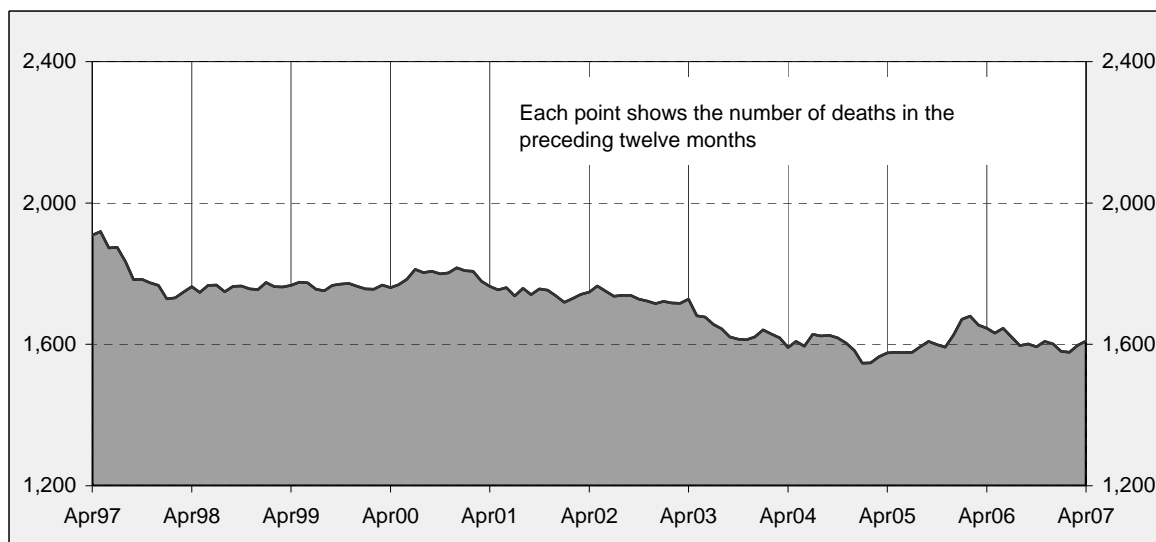




Australian road deaths for 12 months to date - last 10 years



Inquiries

For further information about data in this bulletin, contact:

Road Safety Research and Statistics
Australian Transport Safety Bureau
PO Box 967,
Civic Square, ACT 2608
Email: research@atsb.gov.au
Internet: www.atsb.gov.au

Data Sources

The data presented here are obtained from the following sources:

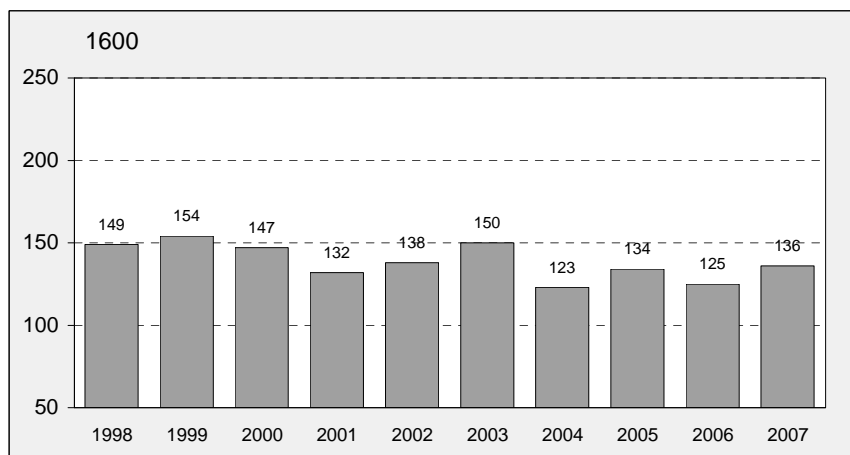
- Roads and Traffic Authority, NSW
- Vicroads
- Queensland Transport
- Department for Transport, Energy and Infrastructure, South Australia
- Western Australia Police
- Department of Infrastructure, Energy and Resources, Tasmania
- Department of Planning and Infrastructure, Northern Territory
- Territory and Municipal Services, ACT

Note

Road death statistics for recent months are preliminary and subject to revision. They include any deaths occurring within 30 days of a crash stemming from injuries received in the crash.

The Australian Transport Safety Bureau is an operationally independent body within the Australian Government Department of Transport and Regional Services.

Australian road deaths for April - last 10 years



This month's key figures

There were a total of 136 road deaths in April 2007.
- this is a 8.8% increase over the April 2006 figure.

There have been 546 road deaths in 2007 to the end of April.
- this is a 1.5% increase over the same 4 month period in 2006.

NUMBER OF ROAD CRASH DEATHS IN EACH STATE / TERRITORY

Road deaths by State/Territory for month, year to date, and twelve months - period ended April 2007 and period ended April 2006

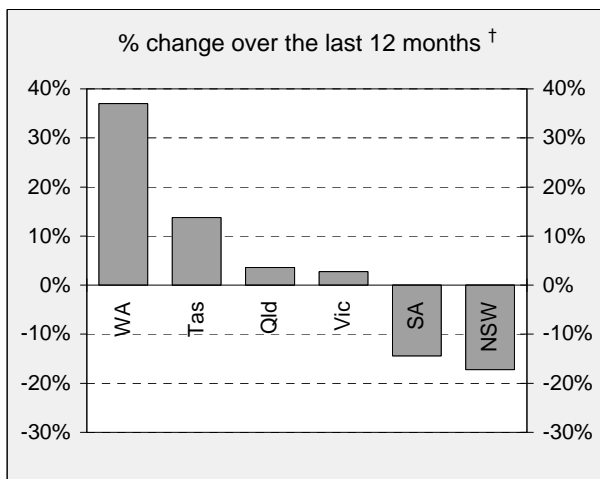
	NSW	Vic	Qld	SA	WA	Tas	NT	ACT	Australia
Current month									
Apr 2007	49	23	25	13	10	12	1	3	136
Apr 2006	49	23	26	10	12	0	5	0	125
% change	0.0	0.0	-3.8	30.0	-16.7	-	-80.0	-	8.8
Year to date									
Jan 2007 - Apr 2007	157	104	112	45	85	27	11	5	546
Jan 2006 - Apr 2006	199	107	100	43	62	15	10	2	538
% change	-21.1	-2.8	12.0	4.7	37.1	80.0	10.0	150.0	1.5
12-months to date									
May 2006 - Apr 2007	457	334	348	119	226	66	43	16	1,609
May 2005 - Apr 2006	552	325	336	139	165	58	51	20	1,646
Difference	-95	9	12	-20	61	8	-8	-4	-37
% change	-17.2	2.8	3.6	-14.4	37.0	13.8	-15.7	-20.0	-2.2

Average annual % change over 5 years^a

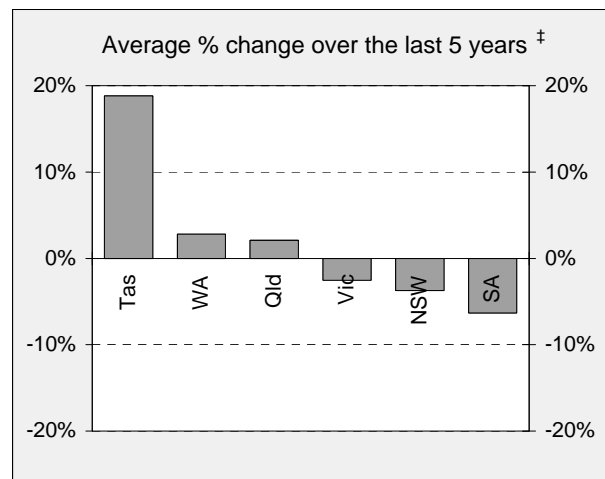
May 2002 to Apr 2007	-3.7	-2.5	2.1	-6.3	2.8	18.8	-6.0	11.5	-1.1
----------------------	------	------	-----	------	-----	------	------	------	------

^a Average annual percentage change based on the exponential trend for the last five 12 -month periods

Percentage change in deaths in each State



[†] Percentage change between the 12-month periods of May 2005 - Apr 2006 and May 2006 - Apr 2007



[‡] Average annual percentage change based on the exponential trend for the last five 12-month periods

NUMBER OF DEATHS IN EACH ROAD USER GROUP

Road deaths by road user group and gender for twelve months ended April 2007 and twelve months ended April 2006

	Drivers	Passengers	Pedestrians	Motor-cyclists ^a	Cyclists	All road users ^b
Males						
May 2006 - Apr 2007	619	177	140	229	40	1,205
May 2005 - Apr 2006	580	194	146	227	31	1,180
% change	6.7	-8.8	-4.1	0.9	29.0	2.1
Females						
May 2006 - Apr 2007	173	135	72	11	4	395
May 2005 - Apr 2006	178	177	89	11	9	464
% change	-2.8	-23.7	-19.1	0.0	-55.6	-14.9
Persons^c						
May 2006 - Apr 2007	795	314	213	240	44	1,609
May 2005 - Apr 2006	758	373	235	238	40	1,646
% change	4.9	-15.8	-9.4	0.8	10.0	-2.2
Average annual % change over 5 years^d						
May 2002 to Apr 2007	0.1	-6.7	-2.6	5.3	4.6	-1.1

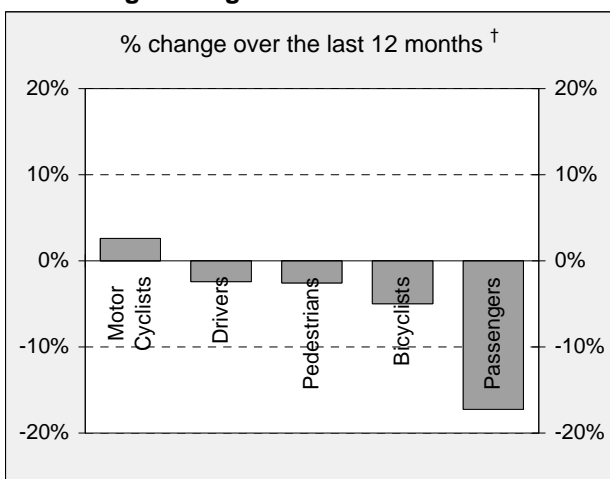
a Includes pillion passengers

b Includes road users not separately specified

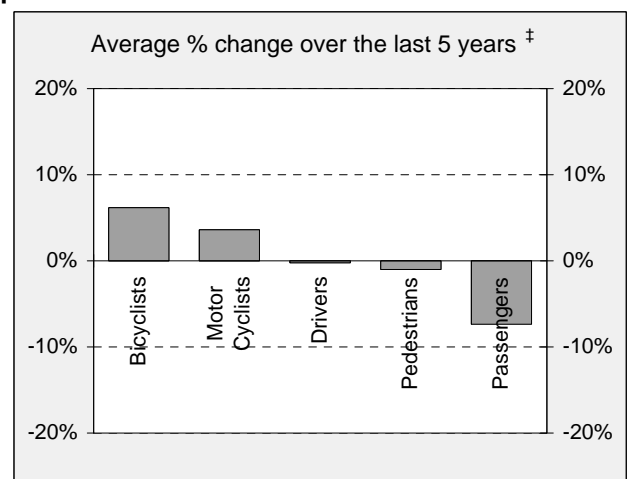
c Includes road users with unstated gender

d Average annual percentage change based on the exponential trend for the last five 12-month period.

Percentage change in deaths in each road user group



† Percentage change between the 12-month periods of May 2005 - Apr 2006 and May 2006 - Apr 2007

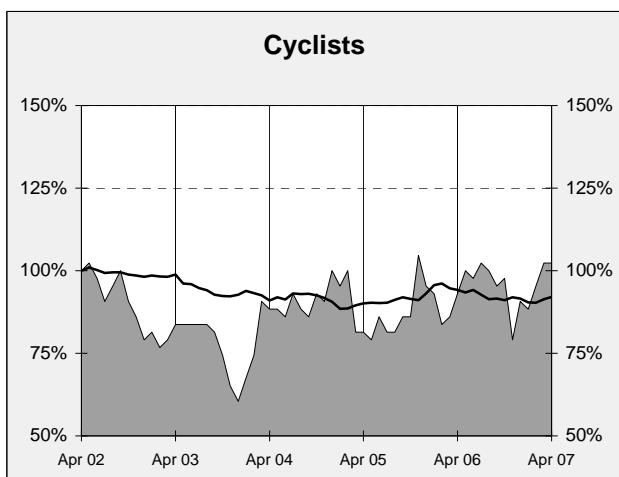
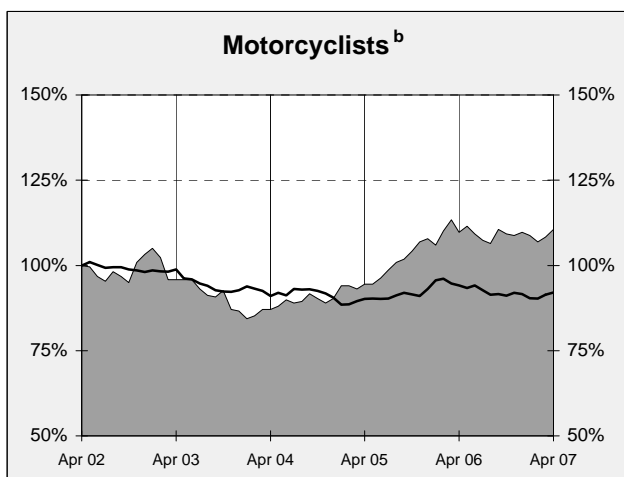
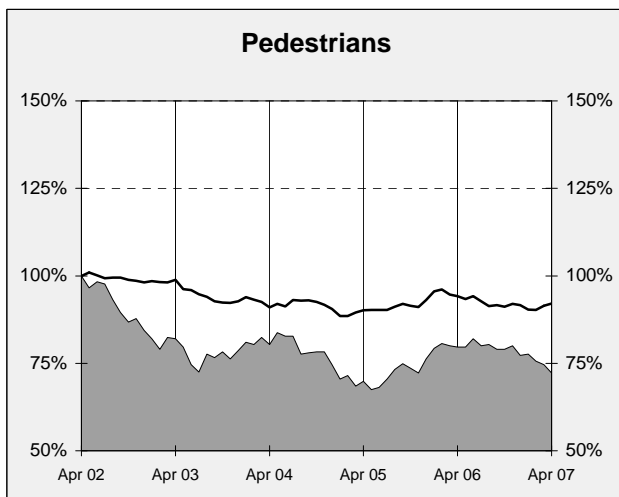
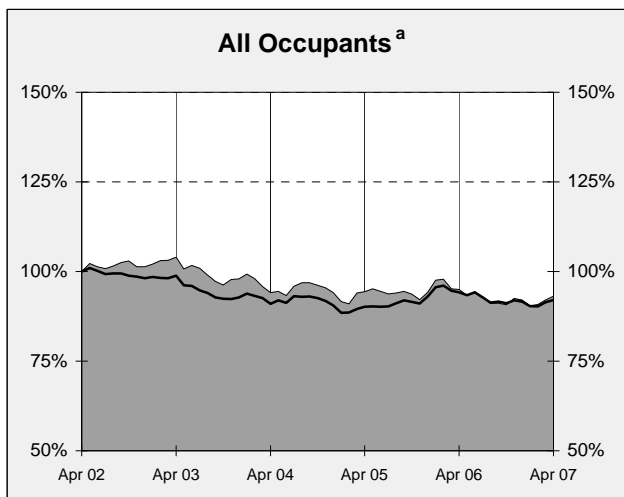
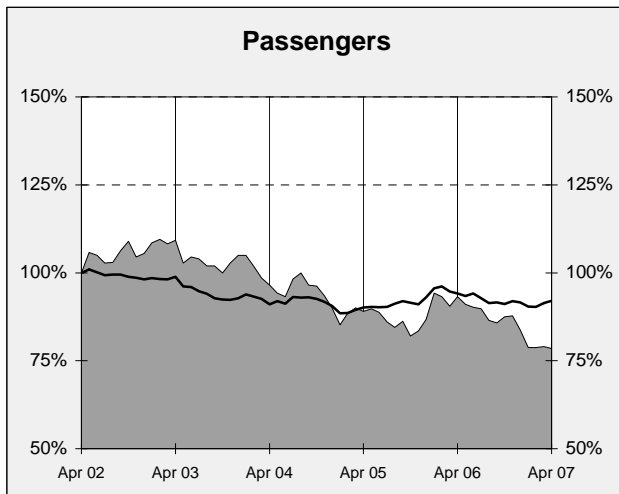
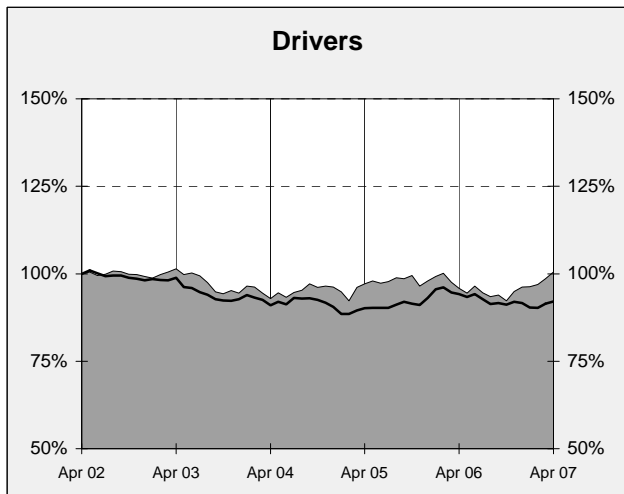
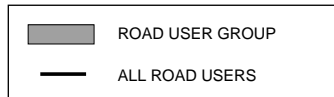


‡ Average annual percentage change based on the exponential trend for the last five 12-month periods

DEATHS IN EACH ROAD USER GROUP - TRENDS

Annual deaths in each road user group - last 6 years

The number shown at each month represents the number of deaths in the preceding 12 months expressed as a percentage of the number of deaths in the 12 months to April 2002.



a Comprises drivers and passengers

b Includes pillion passengers

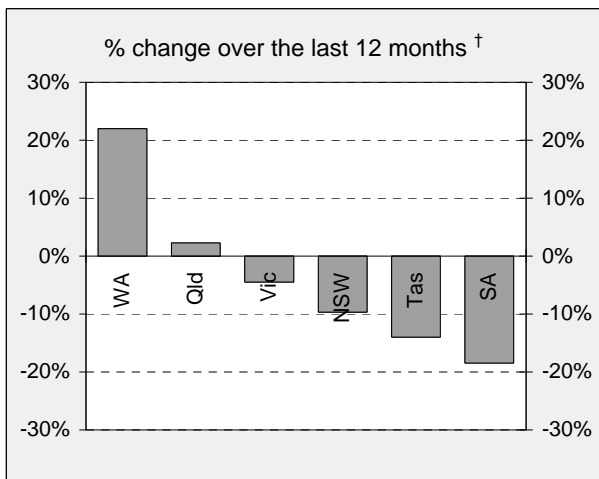
NUMBER OF FATAL ROAD CRASHES IN EACH STATE / TERRITORY

Fatal crashes by State/Territory for month, year to date and twelve month-period ended April 2007 and period ended April 2006

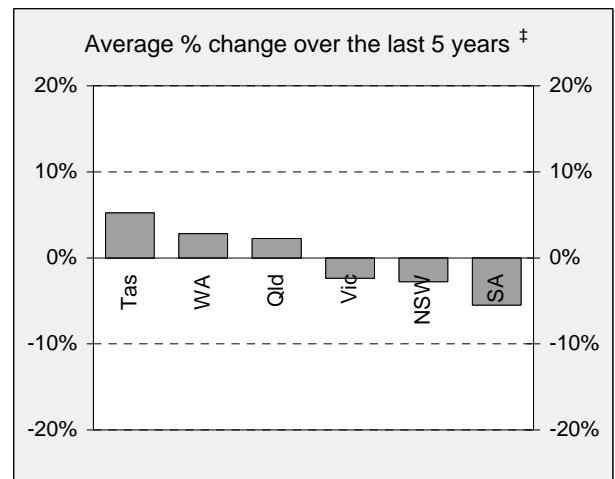
	NSW	Vic	Qld	SA	WA	Tas	NT	ACT	Australia
Current month									
Apr 2007	43	22	24	9	10	9	1	3	121
Apr 2006	40	21	21	10	10	0	5	0	107
% change	7.5	4.8	14.3	-10.0	0.0	-	-80.0	-	13.1
Year to date									
Jan 2007 - Apr 2007	146	95	104	39	81	22	10	5	502
Jan 2006 - Apr 2006	173	96	93	39	53	10	10	2	476
% change	-15.6	-1.0	11.8	0.0	52.8	120.0	0.0	150.0	5.5
12 months to date									
May 2006 - Apr 2007	425	308	325	104	212	54	39	15	1,482
May 2005 - Apr 2006	487	296	304	123	149	51	49	19	1,478
% change	-12.7	4.1	6.9	-15.4	42.3	5.9	-20.4	-21.1	0.3
Average annual % change over 5 years^a									
May 2002 to Apr 2007	-3.1	-1.7	3.1	-6.6	4.6	14.4	-0.6	16.0	-0.2

^a Average annual percentage change based on the exponential trend for the last five 12-month periods

Percentage change in fatal crashes in each State



† Percentage change between the 12-month periods of May 2005 - Apr 2006 and May 2006 - Apr 2007



‡ Average annual percentage change based on the exponential trend for the last five 12-month periods

FATAL CRASHES INVOLVING TRUCKS OR BUSES

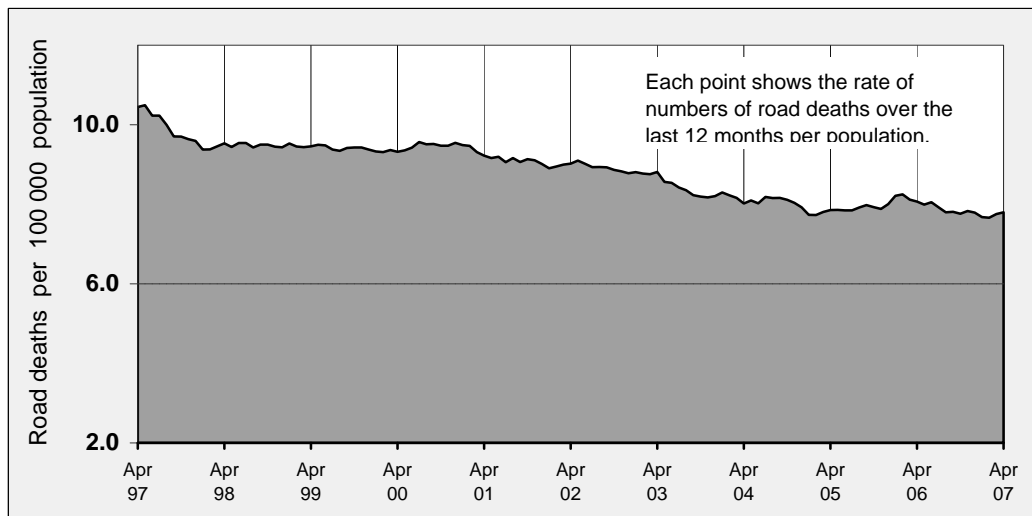
Analysis of fatal crashes involving heavy vehicles will henceforth appear in a separate bulletin on the ATSB website at www.atsb.gov.au. The first issue is in production and due for release in May 2007.

ROAD DEATH RATES

Road deaths per 100 000 population

	NSW	Vic	Qld	SA	WA	Tas	NT	ACT	Australia
12-months to date									
May 2006 - Apr 2007	6.7	6.6	8.6	7.7	11.0	13.5	20.8	4.9	7.8
May 2005 - Apr 2006	8.1	6.4	8.3	8.9	8.0	11.9	24.7	6.1	8.0
Calendar year									
2006	7.3	6.6	8.3	7.5	9.9	11.0	20.3	4.0	7.8
2001	8.0	9.2	8.9	10.1	8.7	12.9	25.3	5.0	8.9

Australian road deaths per year per 100 000 population - moving 12-monthly data



CHARACTERISTICS OF FATAL CRASHES

Proportion (per cent) of fatal crashes by speed limit, crash type, time of day, and time of week. Two years ended April 2007 and two years ended April 2002

	Speed limit (km/h) ^a			Time of Day	
	Up to 60	65-95	100+	Day	Night ^b
May 2005 - Apr 2007	32.7%	21.7%	45.7%	56.0%	44.0%
May 2000 - Apr 2002	33.3%	20.9%	45.8%	56.2%	43.8%
	Crash Type			Time of week	
	Pedestrian crash	Other single veh. Crash	Other multiple veh. crash	Week day	Week-end ^c
May 2005 - Apr 2007	14.8%	45.9%	39.2%	57.3%	42.7%
May 2000 - Apr 2002	17.8%	41.9%	40.3%	60.5%	39.5%

^a Excludes ACT

^b 6:00 pm to 5:59 am

^c 6:00 pm Friday to 5:59 am Monday

ROAD DEATHS BY AGE, GENDER AND ROAD USER GROUP

Road deaths by age and gender

	0-16 years	17-20 years	21-25 years	26-39 years	40-59 years	60+ years	All deaths^a
Males							
May 2006 - Apr 2007	61	163	155	332	278	199	1,205
May 2005 - Apr 2006	76	159	190	314	248	191	1,180
% change	-19.7	2.5	-18.4	5.7	12.1	4.2	2.1
Females							
May 2006 - Apr 2007	40	56	42	62	89	99	395
May 2005 - Apr 2006	56	39	51	84	96	137	464
% change	-28.6	43.6	-17.6	-26.2	-7.3	-27.7	-14.9
Persons^b							
May 2006 - Apr 2007	107	219	197	395	368	298	1,609
May 2005 - Apr 2006	134	198	241	398	344	328	1,646
% change	-20.1	10.6	-18.3	-0.8	7.0	-9.1	-2.2

a Includes road users with unstated age

b Includes road users with unstated gender

Road deaths by age for each main road user group

	0-16 years	17-20 years	21-25 years	26-39 years	40-59 years	60+ years	All deaths^a
Occupants^b							
May 2006 - Apr 2007	68	185	140	258	239	206	1,109
May 2005 - Apr 2006	92	159	169	261	237	211	1,131
% change	-26.1	16.4	-17.2	-1.1	0.8	-2.4	-1.9
Motorcyclists^c							
May 2006 - Apr 2007	6	16	42	91	70	9	240
May 2005 - Apr 2006	3	21	54	86	57	17	238
% change	100.0	-23.8	-22.2	5.8	22.8	-47.1	0.8
Pedestrians							
May 2006 - Apr 2007	21	16	13	37	44	77	213
May 2005 - Apr 2006	31	15	17	44	37	90	235
% change	-32.3	6.7	-23.5	-15.9	18.9	-14.4	-9.4

a Includes road users with unstated age

b Comprises drivers and passengers

c Includes pillion passengers