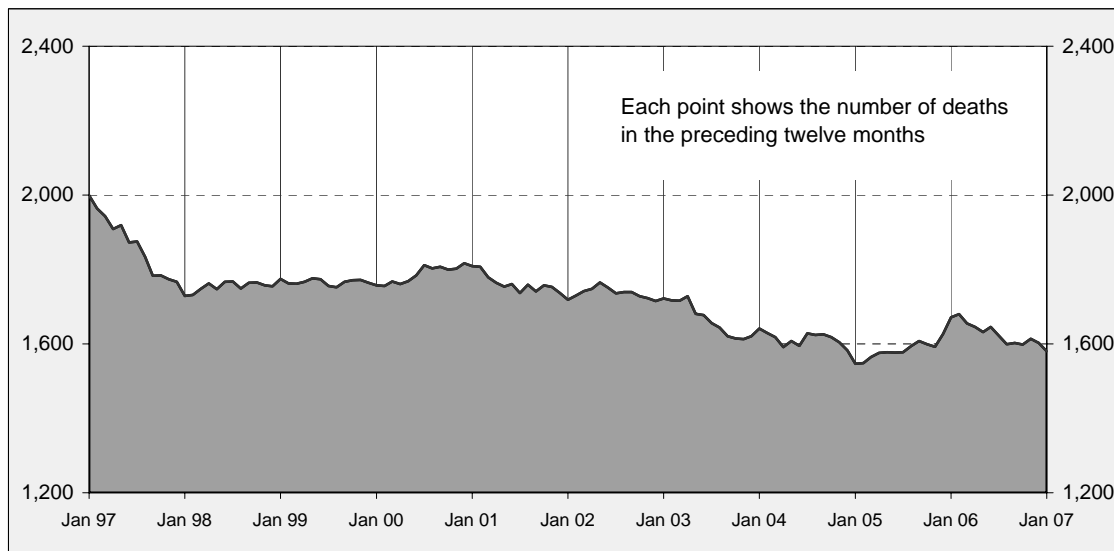




Australian road deaths for 12 months to date - last 10 years



Inquiries

For further information about data in this bulletin, contact:

Road Safety Research and Statistics
Australian Transport Safety Bureau
PO Box 967,
Civic Square, ACT 2608
Email: research@atsb.gov.au
Internet: www.atsb.gov.au

Data Sources

The data presented here are obtained from the following sources:

- Roads and Traffic Authority, NSW
- Vicroads
- Queensland Transport
- Department for Transport, Energy and Infrastructure, South Australia
- Western Australia Police
- Department of Infrastructure, Energy and Resources, Tasmania
- Department of Planning and Infrastructure, Northern Territory
- Territory and Municipal Services, ACT

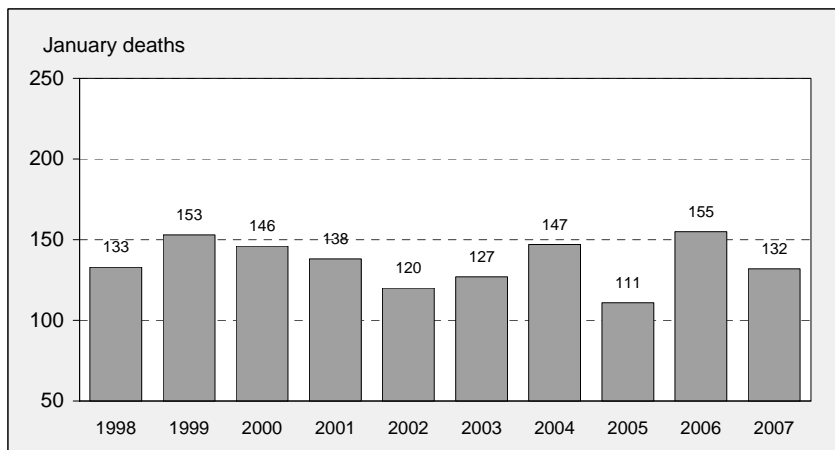
Note

Road death statistics for recent months are preliminary and subject to revision. They include any deaths occurring within 30 days of a crash stemming from injuries received in the crash.

The Australian Transport Safety Bureau is an operationally independent body within the Australian Government Department of Transport and Regional Services.

© Copyright. Commonwealth of Australia

Australian road deaths for January - last 10 years



This month's key figures

There were a total of 132 road deaths in January 2007.
- this is a 14.8% decrease from the January 2006 figure.

During the 12 months ended January 2007, there were a total of 1,580 deaths.
- this is a 5.4% decrease from the same period one year earlier.

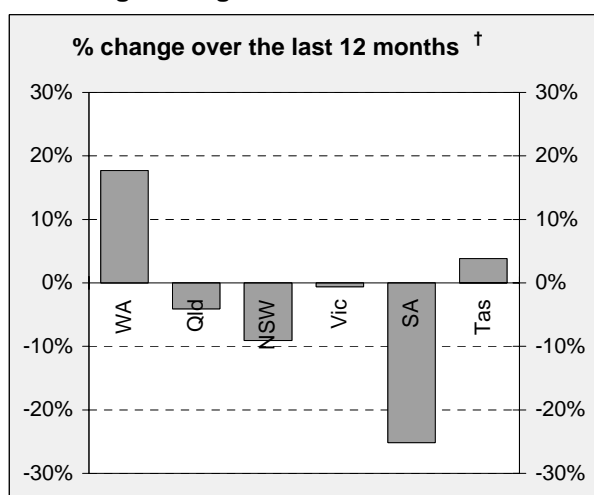
NUMBER OF ROAD CRASH DEATHS IN EACH STATE / TERRITORY

Road deaths by State/Territory for month, year to date, and twelve months - period ended January 2007 and period ended January 2006

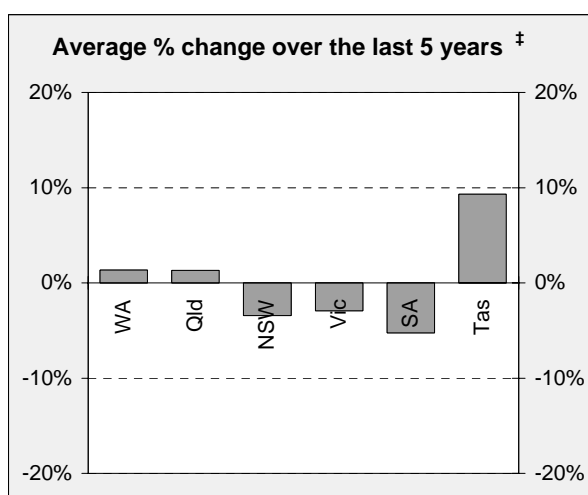
	NSW	Vic	Qld	SA	WA	Tas	NT	ACT	Australia
Current month									
Jan 2007	35	24	22	12	29	5	5	0	132
Jan 2006	57	24	29	13	26	5	1	0	155
% change	-38.6	0.0	-24.1	-7.7	11.5	0.0	400.0	-	-14.8
Year to date									
Jan 2007 - Jan 2007	35	24	22	12	29	5	5	0	132
Jan 2006 - Jan 2006	57	24	29	13	26	5	1	0	155
% change	-38.6	0.0	-24.1	-7.7	11.5	0.0	400.0	-	-14.8
12-months to date									
Feb 2006 - Jan 2007	482	335	328	116	206	54	46	13	1,580
Feb 2005 - Jan 2006	530	337	342	155	175	52	55	25	1,671
Difference	-48	-2	-14	-39	31	2	-9	-12	-91
% change	-9.1	-0.6	-4.1	-25.2	17.7	3.8	-16.4	-48.0	-5.4
Average annual % change over 5 years^a									
Feb 2002 to Jan 2007	-3.4	-2.9	1.3	-5.3	1.4	9.3	-4.1	12.5	-1.5

^a Average annual percentage change based on the exponential trend for the last five 12-month periods

Percentage change in deaths in each State



† Percentage change between the 12-month periods of Feb 2005 - Jan 2006 and Feb 2006 - Jan 2007



‡ Average annual percentage change based on the exponential trend for the last five 12-month periods

NUMBER OF DEATHS IN EACH ROAD USER GROUP

Road deaths by road user group and gender for twelve months ended January 2007 and twelve months ended January 2006

	Drivers	Passengers	Pedestrians	Motor-cyclists ^a	Cyclists	All road users ^b
Males						
Feb 2006 - Jan 2007	592	182	147	227	33	1,181
Feb 2005 - Jan 2006	599	197	153	220	31	1,204
% change	-1.2	-7.6	-3.9	3.2	6.5	-1.9
Females						
Feb 2006 - Jan 2007	171	129	79	9	5	393
Feb 2005 - Jan 2006	186	178	81	10	9	465
% change	-8.1	-27.5	-2.5	-10.0	-44.4	-15.5
Persons^c						
Feb 2006 - Jan 2007	766	312	228	236	38	1,580
Feb 2005 - Jan 2006	785	377	234	230	40	1,671
% change	-2.4	-17.2	-2.6	2.6	-5.0	-5.4
Average annual % change over 5 years^d						
Feb 2002 to Jan 2007	-0.1	-7.4	-1.4	3.0	5.0	-1.5

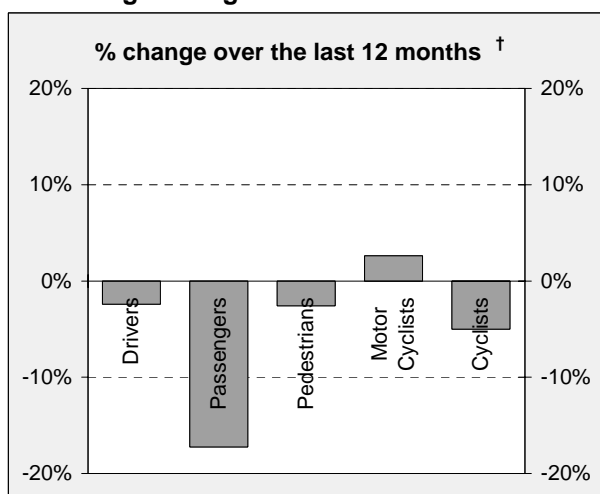
a Includes pillion passengers

b Includes road users not separately specified

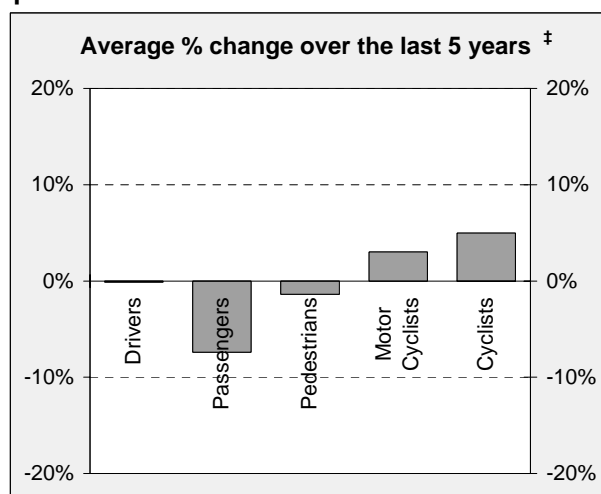
c Includes road users with unstated gender

d Average annual percentage change based on the exponential trend for the last five 12-month periods

Percentage change in deaths in each road user group



† Percentage change between the 12-month periods of Feb 2005 - Jan 2006 and Feb 2006 - Jan 2007

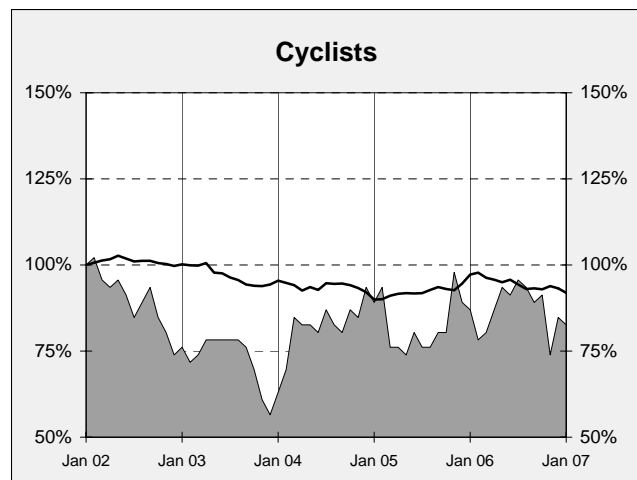
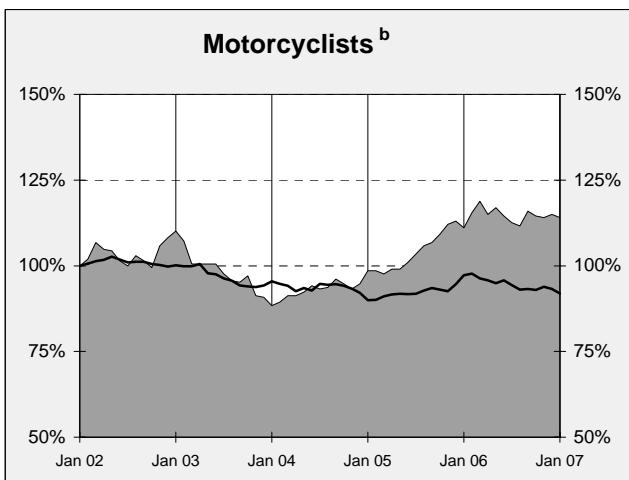
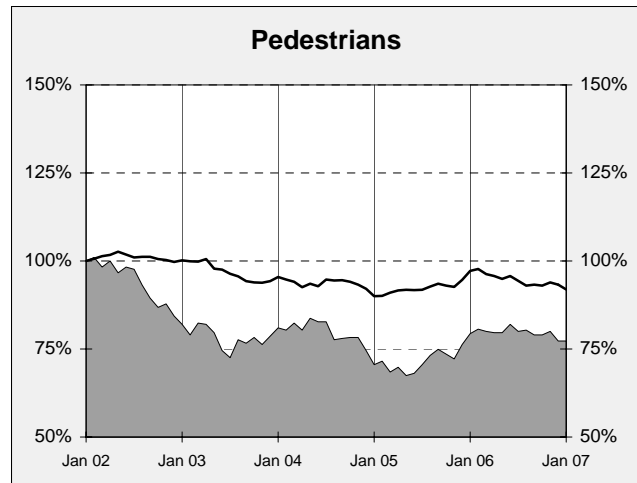
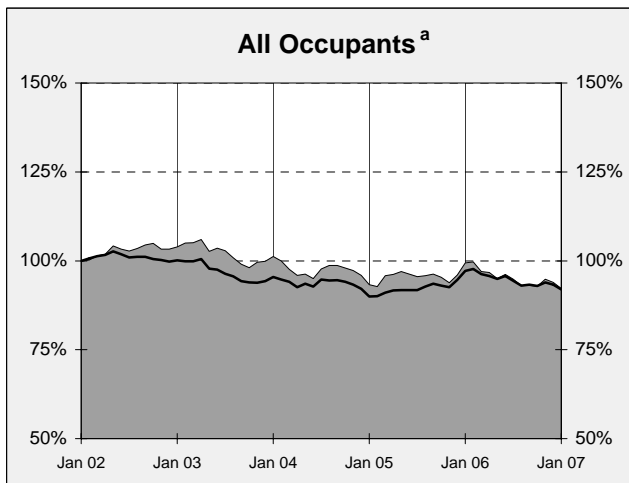
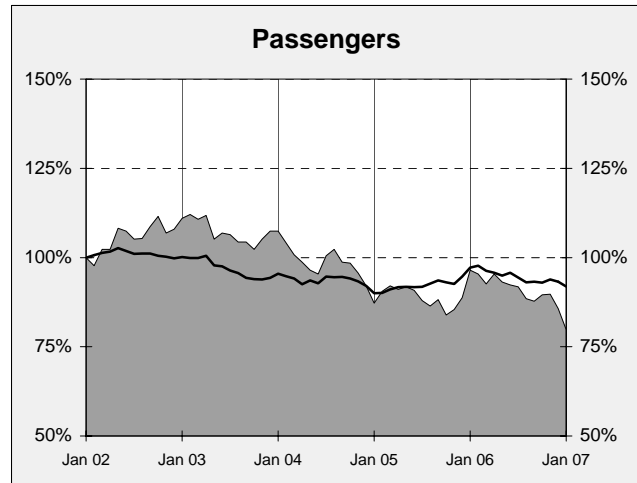
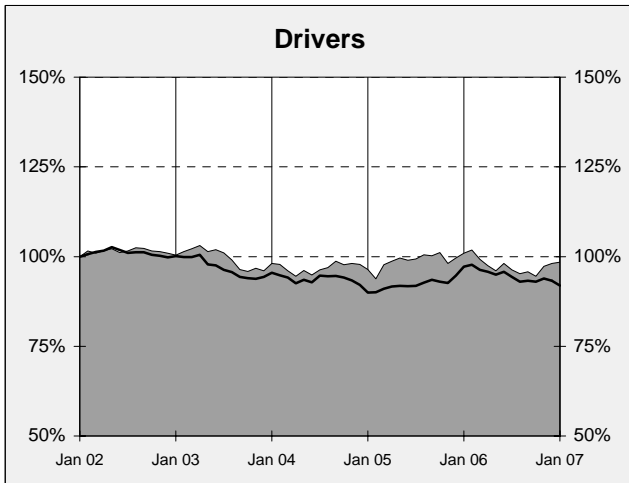
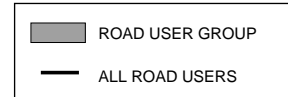


‡ Average annual percentage change based on the exponential trend for the last five 12-month periods

DEATHS IN EACH ROAD USER GROUP - TRENDS

Annual deaths in each road user group - last 6 years

The number shown at each month represents the number of deaths in the preceding 12 months expressed as a percentage of the number of deaths in the 12 months to January 2002.



^a Comprises drivers and passengers

^b Includes pillion passengers

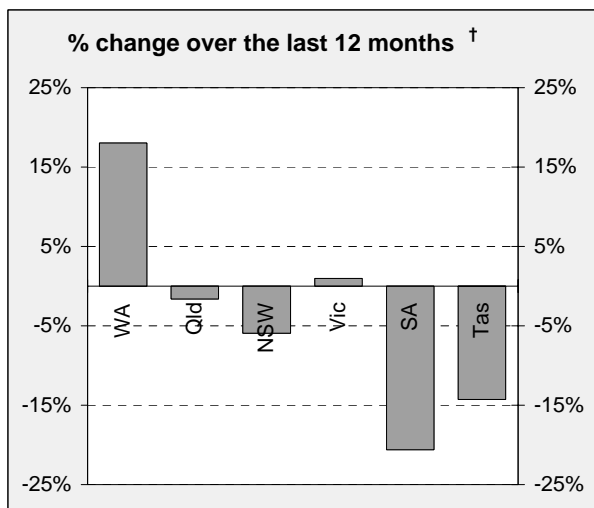
NUMBER OF FATAL ROAD CRASHES IN EACH STATE / TERRITORY

Fatal crashes by State/Territory for month, year to date and twelve month-period ended January 2007 and period ended January 2006

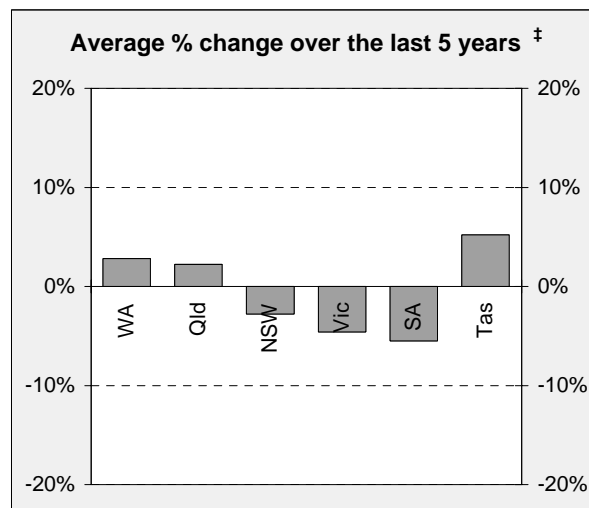
	NSW	Vic	Qld	SA	WA	Tas	NT	ACT	Australia
Current month									
Jan 2007	33	23	20	10	28	4	4	0	122
Jan 2006	46	21	29	10	22	4	1	0	133
% change	-28.3	9.5	-31.0	0.0	27.3	0.0	300.0	-	-8.3
Year to date									
Jan 2007 - Jan 2007	33	23	20	10	28	4	4	0	122
Jan 2006 - Jan 2006	46	21	29	10	22	4	1	0	133
% change	-28.3	9.5	-31.0	0.0	27.3	0.0	300.0	-	-8.3
12 months to date									
Feb 2006 - Jan 2007	444	309	304	104	190	42	42	12	1447
Feb 2005 - Jan 2006	472	306	309	131	161	49	51	24	1503
% change	-5.9	1.0	-1.6	-20.6	18.0	-14.3	-17.6	-50.0	-3.7
Average annual % change over 5 years^a									
Jan 2002 to Jan 2007	-2.8	-2.4	2.2	-5.5	2.8	5.2	1.5	16.2	-0.8

^a Average annual percentage change based on the exponential trend for the last five 12-month periods

Percentage change in fatal crashes in each State



† Percentage change between the 12-month periods of Feb 2005 - Jan 2006 and Feb 2006 - Jan 2007



‡ Average annual percentage change based on the exponential trend for the last five 12-month periods

FATAL CRASHES INVOLVING TRUCKS OR BUSES

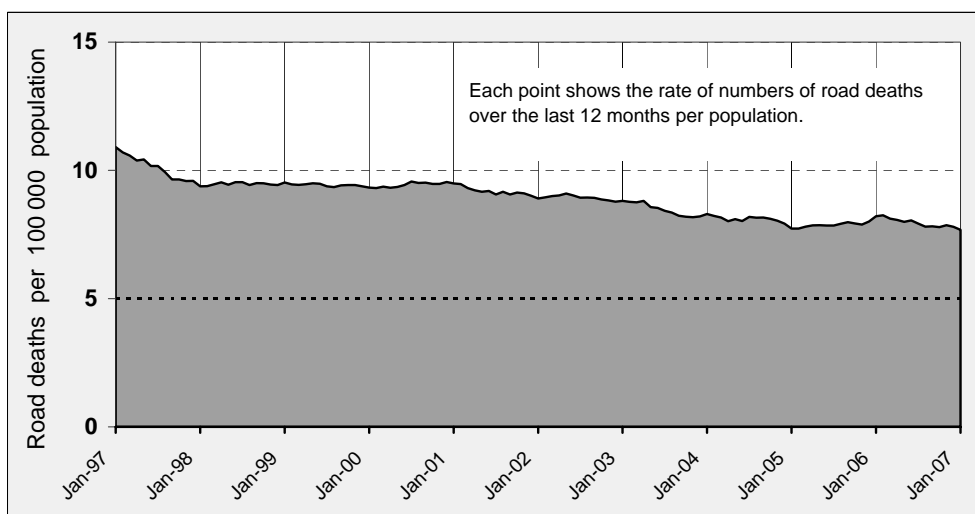
Analysis of fatal crashes involving heavy vehicles will henceforth appear in a separate bulletin on the ATSB website at www.atsb.gov.au. The first issue will be in March 2007.

ROAD DEATH RATES

Road deaths per 100 000 population

	NSW	Vic	Qld	SA	WA	Tas	NT	ACT	Australia
12-months to date									
Feb 2006 - Jan 2007	7.1	6.6	8.1	7.5	10.0	11.0	22.2	4.0	7.7
Feb 2005 - Jan 2006	7.8	6.7	8.6	10.0	8.7	10.7	27.1	7.7	8.2
Calendar year									
2006	7.4	6.6	8.3	7.5	9.9	11.0	20.3	4.0	7.8
2001	8.0	9.2	8.9	10.1	8.7	12.9	25.3	5.0	8.9

Australian road deaths per year per 100 000 population - moving 12-monthly data



CHARACTERISTICS OF FATAL CRASHES

Proportion (per cent) of fatal crashes by speed limit, crash type, time of day, and time of week.
Two years ended January 2007 and two years ended January 2002

	Speed limit (km/h) ^a			Time of Day	
	Up to 60	65-95	100+	Day	Night ^b
Feb 2000 - Jan 2002	33.8%	20.5%	45.7%	55.7%	44.3%
Feb 2005 - Jan 2007	32.2%	22.6%	45.2%	54.9%	45.1%

	Crash Type			Time of week	
	Pedestrian crash	Other single veh. crash	Other multiple veh. crash	Week day	Week-end ^c
Feb 2000 - Jan 2002	17.9%	41.3%	40.7%	60.4%	39.6%
Feb 2005 - Jan 2007	15.4%	46.2%	38.4%	57.4%	42.6%

a Excludes ACT

b 6:00 pm to 5:59 am

c 6:00 pm Friday to 5:59 am Monday

ROAD DEATHS BY AGE, GENDER AND ROAD USER GROUP

Road deaths by age and gender

	0-16 years	17-20 years	21-25 years	26-39 years	40-59 years	60+ years	All deaths^a
Males							
Feb 2006 - Jan 2007	64	167	168	326	261	191	1,181
Feb 2005 - Jan 2006	68	162	188	328	267	189	1,204
% change	-5.9	3.1	-10.6	-0.6	-2.2	1.1	-1.9
Females							
Feb 2006 - Jan 2007	44	50	46	60	93	98	393
Feb 2005 - Jan 2006	49	43	49	86	94	143	465
% change	-10.2	16.3	-6.1	-30.2	-1.1	-31.5	-15.5
Persons^b							
Feb 2006 - Jan 2007	111	217	214	387	355	290	1,580
Feb 2005 - Jan 2006	119	205	237	414	361	332	1,671
% change	-6.7	5.9	-9.7	-6.5	-1.7	-12.7	-5.4

a Includes road users with unstated age

b Includes road users with unstated gender

Road deaths by age for each main road user group

	0-16 years	17-20 years	21-25 years	26-39 years	40-59 years	60+ years	All deaths^a
Occupants^b							
Feb 2006 - Jan 2007	70	180	154	244	235	192	1,078
Feb 2005 - Jan 2006	87	166	166	274	246	221	1,162
% change	-19.5	8.4	-7.2	-10.9	-4.5	-13.1	-7.2
Motorcyclists^c							
Feb 2006 - Jan 2007	6	22	46	91	61	10	236
Feb 2005 - Jan 2006	3	16	50	87	60	14	230
% change	100.0	37.5	-8.0	4.6	1.7	-28.6	2.6
Pedestrians							
Feb 2006 - Jan 2007	29	13	12	45	46	80	228
Feb 2005 - Jan 2006	21	21	19	44	40	88	234
% change	38.1	-38.1	-36.8	2.3	15.0	-9.1	-2.6

a Includes road users with unstated age

b Comprises drivers and passengers

c Includes pillion passengers