



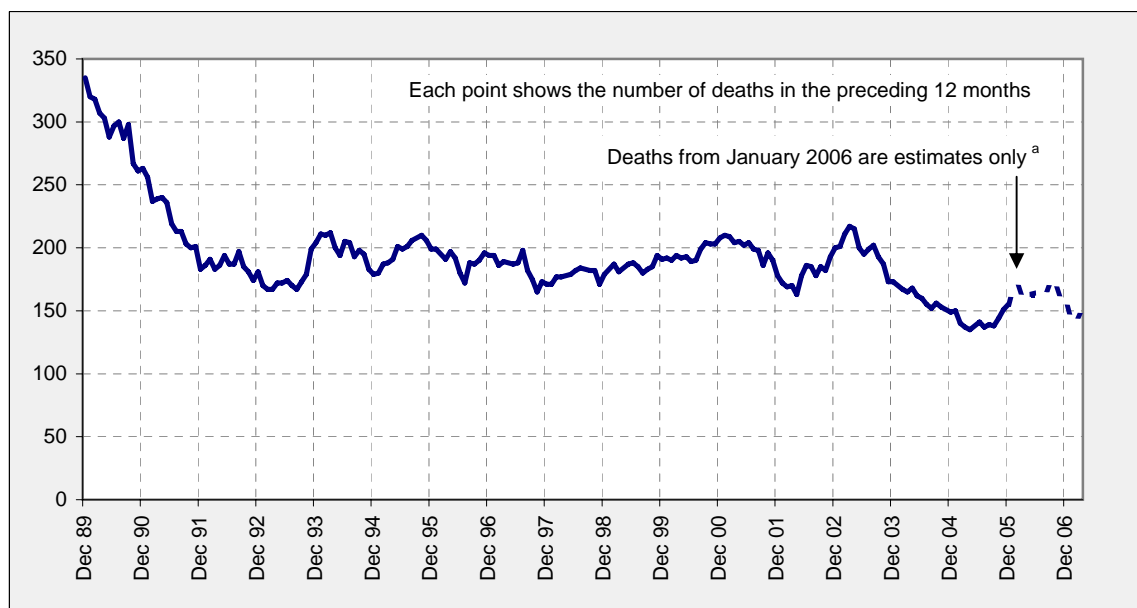
Australian Government
Australian Transport Safety Bureau

Fatal Heavy Vehicle Crashes AUSTRALIA

Quarterly Bulletin

January - March 2007

Deaths from crashes involving articulated trucks, Australia, 12 month rolling total



^a Victorian data from January 2006 are currently unavailable. Australian monthly figures from January 2006 have been estimated using the 2005 Victorian monthly average.

Key figures

In Australia during the 12 months to the end of March 2007, there were:

- 127 deaths from crashes involving articulated trucks, down 7.3% on the 12 months to the end of March 2006 ^b
- 60 deaths from crashes involving heavy rigid trucks ^b
- 15 deaths from crashes involving buses, down 57.1% on the 12 months to the end of March 2006.

^b Excludes deaths in Victoria due to the unavailability of data.

Inquiries

For further information about data in this bulletin, contact:

Road Safety Research and Statistics

Australian Transport Safety Bureau

PO Box 967 Civic Square ACT 2608

Email: research@atsb.gov.au

Internet: www.atsb.gov.au

About the Australian Transport Safety Bureau

The Australian Transport Safety Bureau is an operationally independent body within the Australian Government Department of Transport and Regional Services.

© Copyright. Commonwealth of Australia

ISBN 978-0-642-25558-7

JUN2007/DOTARS50307

Data Sources

The data presented here are obtained from the following sources:

- Roads and Traffic Authority, New South Wales
- Vicroads
- Queensland Transport
- Department for Transport, Energy and Infrastructure, South Australia
- Western Australia Police
- Department of Infrastructure, Energy and Resources, Tasmania
- Department of Planning and Infrastructure, Northern Territory
- Territory and Municipal Services, Australian Capital Territory

Note

Road death statistics for recent months are preliminary and subject to revision. They include any deaths occurring within 30 days of a crash stemming from injuries received in the crash.

Articulated Trucks - Fatal Crashes

Fatal crashes involving articulated trucks by State/Territory by quarter - Five years to the end of March 2007

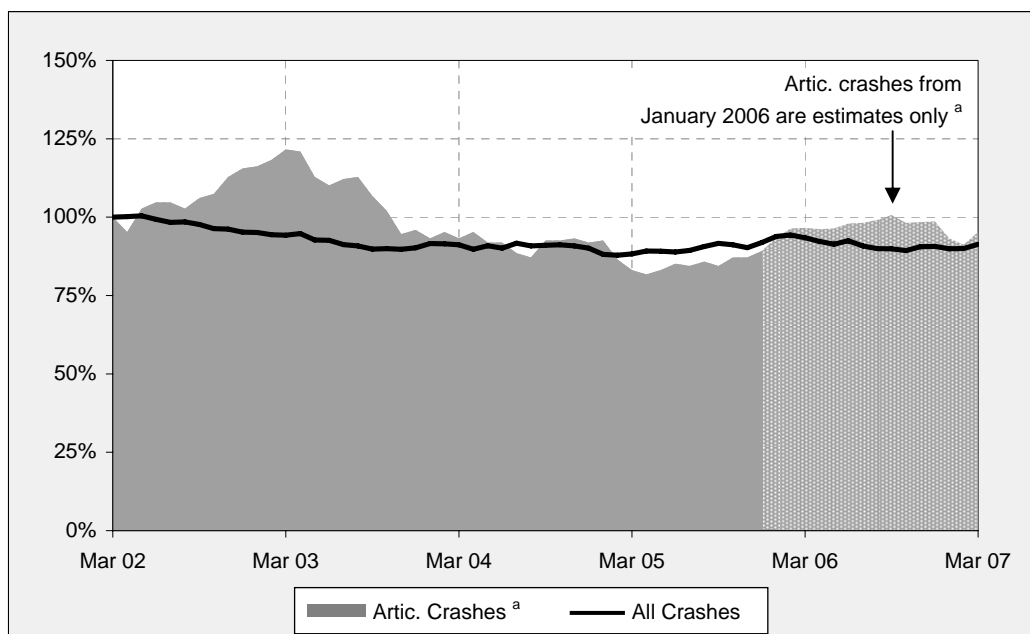
	NSW	Vic	Qld	SA	WA	Tas	NT	ACT	Australia
Apr - Jun 2002	23	12	9	0	5	1	1	0	51
Jul - Sep 2002	18	4	4	6	0	1	0	0	33
Oct - Dec 2002	22	12	8	1	6	0	2	0	51
Jan - Mar 2003	12	12	8	7	5	0	1	0	45
Apr - Jun 2003	13	8	9	2	1	1	0	0	34
Jul - Sep 2003	11	6	6	3	2	0	0	0	28
Oct - Dec 2003	14	7	8	1	5	0	0	0	35
Jan - Mar 2004	16	13	3	1	6	2	0	0	41
Apr - Jun 2004	12	9	2	5	2	1	1	0	32
Jul - Sep 2004	11	5	5	1	5	1	1	0	29
Oct - Dec 2004	18	8	3	2	3	0	0	0	34
Jan - Mar 2005	10	7	4	5	1	1	0	0	28
Apr - Jun 2005	15	6	7	0	5	2	0	0	35
Jul - Sep 2005	7	5	7	7	2	0	0	0	28
Oct - Dec 2005	13	10	9	3	3	2	1	0	41
Jan - Mar 2006	18	N/A	6	3	1	3	1	0	N/A
Apr - Jun 2006	14	N/A	8	2	5	0	1	0	N/A
Jul - Sep 2006	8	N/A	12	1	1	3	0	0	N/A
Oct - Dec 2006	17	N/A	8	3	3	0	0	0	N/A
Jan - Mar 2007	16	N/A	5	0	4	1	1	0	N/A

12 month periods to the end of March 2007 and March 2006

Apr 2006 - Mar 2007	55	N/A	33	6	13	4	2	0	N/A
Apr 2005 - Mar 2006	53	N/A	29	13	11	7	2	0	N/A
% change	3.8	N/A	13.8	-53.8	18.2	-42.9	0.0	-	N/A

Annual count of fatal crashes involving articulated trucks in Australia - Five years to the end of March 2007

Each point shows the number of fatal crashes in the preceding 12 months expressed as a percentage of the number of fatal crashes in the 12 months to the end of March 2002.



^a Victorian data from January 2006 are currently unavailable. Australian monthly figures from January 2006 have been estimated using the 2005 Victorian monthly average.

Articulated Trucks - Deaths

Deaths from crashes involving articulated trucks by State/Territory by quarter - Five years to the end of March 2007

	NSW	Vic	Qld	SA	WA	Tas	NT	ACT	Australia
Apr - Jun 2002	30	14	10	0	7	1	1	0	63
Jul - Sep 2002	21	5	5	6	0	1	0	0	38
Oct - Dec 2002	22	16	10	2	6	0	6	0	62
Jan - Mar 2003	13	17	9	7	7	0	1	0	54
Apr - Jun 2003	17	9	10	2	1	1	0	0	40
Jul - Sep 2003	16	8	7	3	2	0	0	0	36
Oct - Dec 2003	17	7	9	1	7	0	0	0	41
Jan - Mar 2004	19	14	3	1	7	2	0	0	46
Apr - Jun 2004	15	9	2	6	2	1	1	0	36
Jul - Sep 2004	12	5	5	4	5	1	1	0	33
Oct - Dec 2004	18	9	3	2	3	0	0	0	35
Jan - Mar 2005	11	9	5	7	1	1	0	0	34
Apr - Jun 2005	18	6	7	0	7	2	0	0	40
Jul - Sep 2005	7	5	8	7	2	0	0	0	29
Oct - Dec 2005	16	12	15	3	3	2	1	0	52
Jan - Mar 2006	25	N/A	6	3	1	3	1	0	N/A
Apr - Jun 2006	16	N/A	9	2	6	0	1	0	N/A
Jul - Sep 2006	9	N/A	14	1	1	5	0	0	N/A
Oct - Dec 2006	19	N/A	8	4	3	0	0	0	N/A
Jan - Mar 2007	16	N/A	6	0	4	2	1	0	N/A

12 month periods to the end of March 2007 and March 2006

Apr 2006 - Mar 2007	60	N/A	37	7	14	7	2	0	N/A
Apr 2005 - Mar 2006	66	N/A	36	13	13	7	2	0	N/A
% change	-9.1	N/A	2.8	-46.2	7.7	0.0	0.0	-	N/A

Deaths from crashes involving articulated trucks by State/Territory by road user - 12 months to the end of March 2007

	NSW	Vic	Qld	SA	WA	Tas	NT	ACT	Australia
Drivers ^a	38	N/A	25	1	6	4	1	0	N/A
Passengers ^a	9	N/A	8	2	3	3	0	0	N/A
Pedestrians	10	N/A	1	3	3	0	1	0	N/A
Motor cyclists ^b	2	N/A	2	0	2	0	0	0	N/A
Cyclists	1	N/A	1	1	0	0	0	0	N/A
All road users ^c	60	N/A	37	7	14	7	2	0	N/A

^a Includes drivers/passengers of light vehicles

^b Includes pillion passengers

^c Includes road users not separately specified

Deaths from crashes involving articulated trucks by State/Territory by crash type - 12 months to the end of March 2007

	NSW	Vic	Qld	SA	WA	Tas	NT	ACT	Australia
Pedestrian crashes	10	N/A	1	3	3	0	1	0	N/A
Other single vehicle crashes	12	N/A	7	0	0	0	0	0	N/A
Multiple vehicle crashes	38	N/A	29	4	11	7	1	0	N/A
All crash types	60	N/A	37	7	14	7	2	0	N/A

Heavy Rigid Trucks - Fatal Crashes

Fatal crashes involving heavy rigid trucks by State/Territory by quarter -
Five years to the end of March 2007

	NSW	Vic	Qld	SA	WA	Tas	NT	ACT	Australia
<i>Apr - Jun 2002</i>	6	N/A	5	3	N/A	N/A	0	0	N/A
<i>Jul - Sep 2002</i>	11	N/A	5	4	N/A	N/A	0	0	N/A
<i>Oct - Dec 2002</i>	10	N/A	2	2	N/A	N/A	3	1	N/A
<i>Jan - Mar 2003</i>	2	N/A	4	2	N/A	N/A	0	1	N/A
<i>Apr - Jun 2003</i>	4	N/A	6	3	N/A	N/A	1	0	N/A
<i>Jul - Sep 2003</i>	3	N/A	2	2	N/A	N/A	1	0	N/A
<i>Oct - Dec 2003</i>	10	N/A	5	1	N/A	N/A	0	1	N/A
<i>Jan - Mar 2004</i>	8	6	5	2	3	3	0	0	27
<i>Apr - Jun 2004</i>	6	6	3	1	0	0	0	0	16
<i>Jul - Sep 2004</i>	6	3	6	3	2	1	0	0	21
<i>Oct - Dec 2004</i>	10	4	5	1	2	0	0	0	22
<i>Jan - Mar 2005</i>	5	11	1	1	N/A	0	1	0	N/A
<i>Apr - Jun 2005</i>	8	7	4	0	N/A	2	0	0	N/A
<i>Jul - Sep 2005</i>	7	4	3	2	N/A	0	0	1	N/A
<i>Oct - Dec 2005</i>	6	2	2	0	N/A	0	0	0	N/A
<i>Jan - Mar 2006</i>	5	N/A	3	1	1	1	0	0	N/A
<i>Apr - Jun 2006</i>	5	N/A	3	2	2	0	1	0	N/A
<i>Jul - Sep 2006</i>	4	N/A	5	2	2	1	0	0	N/A
<i>Oct - Dec 2006</i>	10	N/A	4	0	3	1	0	0	N/A
<i>Jan - Mar 2007</i>	2	N/A	2	2	3	0	0	0	N/A

12 month periods to the end of March 2007 and March 2006

<i>Apr 2006 - Mar 2007</i>	21	N/A	14	6	10	2	1	0	N/A
<i>Apr 2005 - Mar 2006</i>	26	N/A	12	3	N/A	3	0	1	N/A
% change	-19.2	N/A	16.7	100.0	N/A	-33.3	-	-100.0	N/A

Heavy Rigid Trucks - Deaths

Deaths from crashes involving heavy rigid trucks by State/Territory by quarter - Five years to the end of March 2007

	NSW	Vic	Qld	SA	WA	Tas	NT	ACT	Australia
Apr - Jun 2002	7	N/A	5	3	N/A	N/A	0	0	N/A
Jul - Sep 2002	12	N/A	5	4	N/A	N/A	0	0	N/A
Oct - Dec 2002	11	N/A	2	2	N/A	N/A	3	1	N/A
Jan - Mar 2003	3	N/A	4	2	N/A	N/A	0	1	N/A
Apr - Jun 2003	4	N/A	6	3	N/A	N/A	1	0	N/A
Jul - Sep 2003	3	N/A	2	2	N/A	N/A	1	0	N/A
Oct - Dec 2003	13	N/A	6	1	N/A	N/A	0	1	N/A
Jan - Mar 2004	10	6	5	2	3	3	0	0	29
Apr - Jun 2004	8	6	4	1	0	0	0	0	19
Jul - Sep 2004	10	3	7	3	2	1	0	0	26
Oct - Dec 2004	10	4	6	1	2	0	0	0	23
Jan - Mar 2005	5	13	1	1	N/A	0	1	0	N/A
Apr - Jun 2005	9	7	5	0	N/A	2	0	0	N/A
Jul - Sep 2005	7	5	4	2	N/A	0	0	1	N/A
Oct - Dec 2005	7	2	3	0	N/A	0	0	0	N/A
Jan - Mar 2006	7	N/A	3	1	1	1	0	0	N/A
Apr - Jun 2006	7	N/A	3	2	2	0	1	0	N/A
Jul - Sep 2006	4	N/A	5	2	3	1	0	0	N/A
Oct - Dec 2006	12	N/A	5	0	3	1	0	0	N/A
Jan - Mar 2007	2	N/A	2	2	3	0	0	0	N/A

12 month periods to the end of March 2007 and March 2006

Apr 2006 - Mar 2007	25	N/A	15	6	11	2	1	0	N/A
Apr 2005 - Mar 2006	30	N/A	15	3	N/A	3	0	1	N/A
% change	-16.7	N/A	0.0	100.0	N/A	-33.3	-	-100.0	N/A

Deaths from crashes involving heavy rigid trucks by State/Territory by road user - 12 months to the end of March 2007

	NSW	Vic	Qld	SA	WA	Tas	NT	ACT	Australia
Drivers ^a	10	N/A	9	2	6	1	1	0	N/A
Passengers ^a	9	N/A	3	1	2	1	0	0	N/A
Pedestrians	4	N/A	1	0	1	0	0	0	N/A
Motor cyclists ^b	1	N/A	2	1	2	0	0	0	N/A
Cyclists	1	N/A	0	2	0	0	0	0	N/A
All road users ^c	25	N/A	15	6	11	2	1	0	N/A

^a Includes drivers/passengers of light vehicles

^b Includes pillion passengers

^c Includes road users not separately specified

Deaths from crashes involving heavy rigid trucks by State/Territory by crash type - 12 months to the end of March 2007

	NSW	Vic	Qld	SA	WA	Tas	NT	ACT	Australia
Pedestrian crashes	4	N/A	1	0	1	0	0	0	N/A
Other single vehicle crashes	1	N/A	3	0	0	1	0	0	N/A
Multiple vehicle crashes	20	N/A	11	6	10	1	1	0	N/A
All crash types	25	N/A	15	6	11	2	1	0	N/A

Buses - Fatal Crashes

Fatal crashes involving buses by State/Territory by quarter - Five years to the end of March 2007

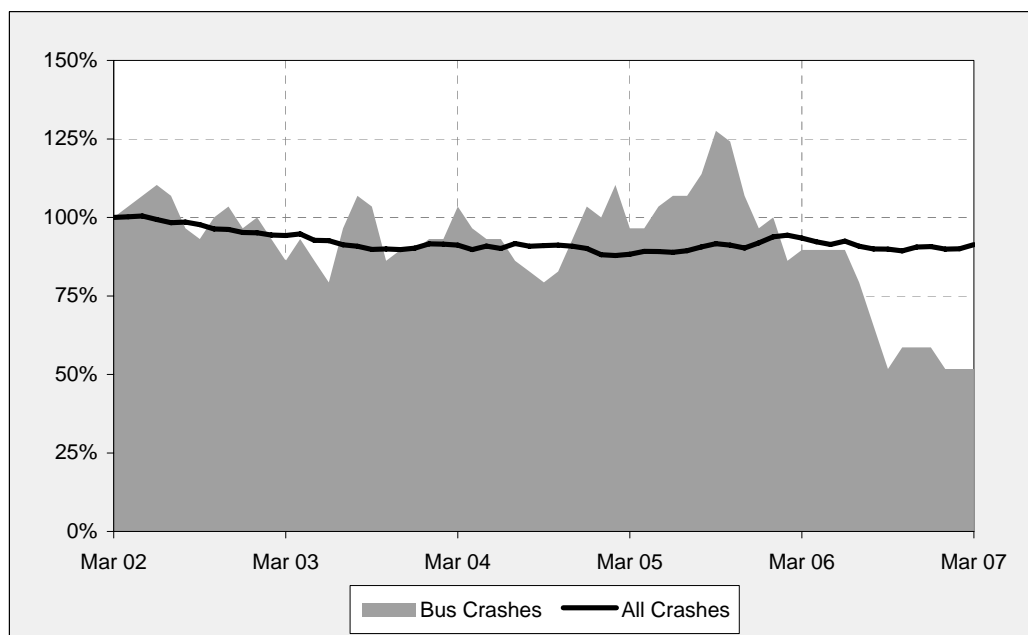
	NSW	Vic	Qld	SA	WA	Tas	NT	ACT	Australia
<i>Apr - Jun 2002</i>	4	1	3	1	0	0	0	0	9
<i>Jul - Sep 2002</i>	1	1	1	0	0	0	0	0	3
<i>Oct - Dec 2002</i>	2	2	2	1	1	0	0	0	8
<i>Jan - Mar 2003</i>	4	0	1	0	0	0	0	0	5
<i>Apr - Jun 2003</i>	2	2	2	0	0	1	0	0	7
<i>Jul - Sep 2003</i>	3	1	1	2	2	0	1	0	10
<i>Oct - Dec 2003</i>	4	0	0	0	0	0	0	0	4
<i>Jan - Mar 2004</i>	3	2	2	1	0	0	0	1	9
<i>Apr - Jun 2004</i>	1	1	2	0	0	0	0	0	4
<i>Jul - Sep 2004</i>	3	1	1	1	0	0	0	0	6
<i>Oct - Dec 2004</i>	8	2	1	0	0	0	0	0	11
<i>Jan - Mar 2005</i>	5	1	0	0	1	0	0	0	7
<i>Apr - Jun 2005</i>	5	0	2	0	0	0	0	0	7
<i>Jul - Sep 2005</i>	4	2	5	1	0	0	0	0	12
<i>Oct - Dec 2005</i>	1	1	0	0	0	0	0	0	2
<i>Jan - Mar 2006</i>	2	2	1	0	0	0	0	0	5
<i>Apr - Jun 2006</i>	3	0	2	1	0	1	0	0	7
<i>Jul - Sep 2006</i>	0	0	1	0	0	0	0	0	1
<i>Oct - Dec 2006</i>	2	0	1	0	1	0	0	0	4
<i>Jan - Mar 2007</i>	1	0	2	0	0	0	0	0	3

12 month periods to the end of March 2007 and March 2006

<i>Apr 2006 - Mar 2007</i>	6	0	6	1	1	1	0	0	15
<i>Apr 2005 - Mar 2006</i>	12	5	8	1	0	0	0	0	26
<i>% change</i>	-50.0	-100.0	-25.0	0.0	-	-	-	-	-42.3

Annual count of fatal crashes involving buses in Australia - Five years to the end of March 2007

Each point shows the number of fatal crashes in the preceding 12 months expressed as a percentage of the number of fatal crashes in the 12 months to the end of March 2002.



Buses - Deaths

Deaths from crashes involving buses by State/Territory by quarter - Five years to the end of March 2007

	NSW	Vic	Qld	SA	WA	Tas	NT	ACT	Australia
Apr - Jun 2002	7	1	4	1	0	0	0	0	13
Jul - Sep 2002	1	1	1	0	0	0	0	0	3
Oct - Dec 2002	2	2	2	4	2	0	0	0	12
Jan - Mar 2003	5	0	1	0	0	0	0	0	6
Apr - Jun 2003	2	2	2	0	0	1	0	0	7
Jul - Sep 2003	4	1	1	3	2	0	1	0	12
Oct - Dec 2003	4	0	0	0	0	0	0	0	4
Jan - Mar 2004	3	2	2	1	0	0	0	1	9
Apr - Jun 2004	1	1	2	0	0	0	0	0	4
Jul - Sep 2004	3	1	1	1	0	0	0	0	6
Oct - Dec 2004	8	2	1	0	0	0	0	0	11
Jan - Mar 2005	5	1	0	0	1	0	0	0	7
Apr - Jun 2005	9	0	2	0	0	0	0	0	11
Jul - Sep 2005	6	2	7	1	0	0	0	0	16
Oct - Dec 2005	1	2	0	0	0	0	0	0	3
Jan - Mar 2006	2	2	1	0	0	0	0	0	5
Apr - Jun 2006	3	0	2	1	0	1	0	0	7
Jul - Sep 2006	0	0	1	0	0	0	0	0	1
Oct - Dec 2006	2	0	1	0	1	0	0	0	4
Jan - Mar 2007	1	0	2	0	0	0	0	0	3

12 month periods to the end of March 2007 and March 2006

Apr 2006 - Mar 2007	6	0	6	1	1	1	0	0	15
Apr 2005 - Mar 2006	18	6	10	1	0	0	0	0	35
% change	-66.7	-100.0	-40.0	0.0	-	-	-	-	-57.1

Deaths from crashes involving buses by State/Territory by road user - 12 months to the end of March 2007

	NSW	Vic	Qld	SA	WA	Tas	NT	ACT	Australia
Drivers ^a	4	0	0	0	0	0	0	0	4
Passengers ^a	0	0	0	0	1	1	0	0	2
Pedestrians	1	0	4	0	0	0	0	0	5
Motor cyclists ^b	1	0	1	1	0	0	0	0	3
Cyclists	0	0	1	0	0	0	0	0	1
All road users ^c	6	0	6	1	1	1	0	0	15

^a Includes drivers/passengers of light vehicles

^b Includes pillion passengers

^c Includes road users not separately specified

Deaths from crashes involving buses by State/Territory by crash type - 12 months to the end of March 2007

	NSW	Vic	Qld	SA	WA	Tas	NT	ACT	Australia
Pedestrian crashes	1	0	4	0	0	0	0	0	5
Other single vehicle crashes	0	0	0	0	1	0	0	0	1
Multiple vehicle crashes	5	0	2	1	0	1	0	0	9
All crash types	6	0	6	1	1	1	0	0	15