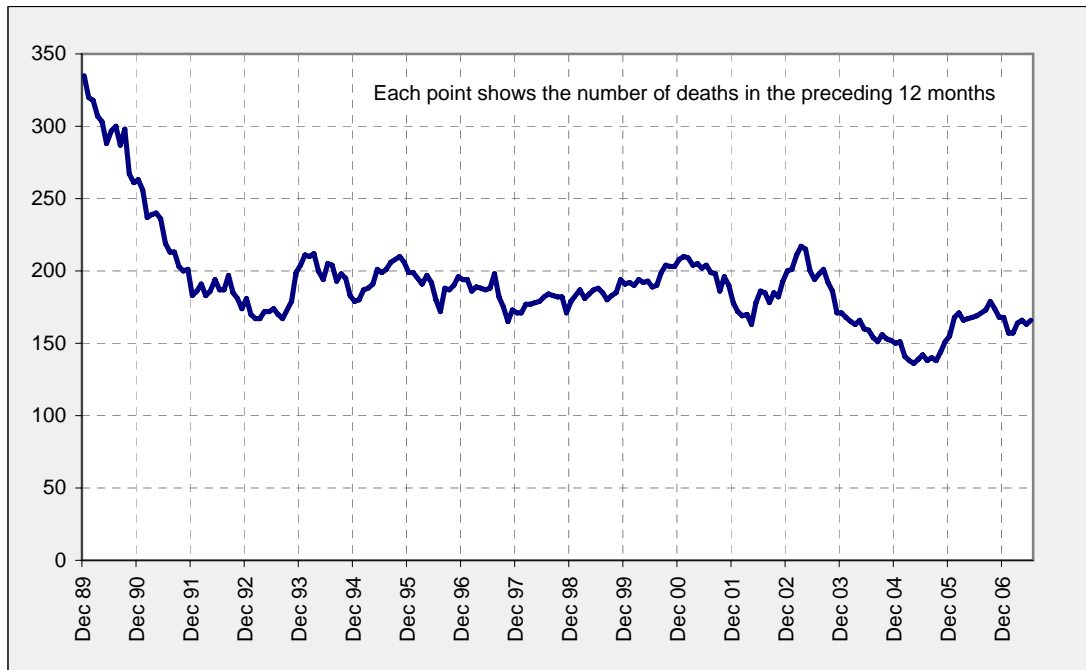




Deaths from crashes involving articulated trucks, Australia, 12 month rolling total



Key figures

In Australia during the 12 months to the end of June 2007, there were:

- 166 deaths from crashes involving articulated trucks, down 1.8% on the 12 months to the end of June 2006
- 62 deaths from crashes involving heavy rigid trucks^b
- 17 deaths from crashes involving buses, down 45.2% on the 12 months to the end of June 2006.

^b Excludes deaths in Victoria due to the unavailability of data.

Inquiries

For further information about data in this bulletin, contact:

Road Safety Research and Statistics
Australian Transport Safety Bureau
PO Box 967 Civic Square ACT 2608
Email: research@atsb.gov.au
Internet: www.atsb.gov.au

About the Australian Transport Safety Bureau

The Australian Transport Safety Bureau is an operationally independent body within the Australian Government Department of Infrastructure, Transport, Regional Development and Local Government.

Data Sources

The data presented here are obtained from the following sources:

- Roads and Traffic Authority, New South Wales
- Vicroads
- Queensland Transport
- Department for Transport, Energy and Infrastructure, South Australia
- Western Australia Police
- Department of Infrastructure, Energy and Resources, Tasmania
- Department of Planning and Infrastructure, Northern Territory
- Territory and Municipal Services, Australian Capital Territory

Note

Road death statistics for recent months are preliminary and subject to revision. They include any deaths occurring within 30 days of a crash stemming from injuries received in the crash.

Articulated Trucks - Fatal Crashes

Fatal crashes involving articulated trucks by State/Territory by quarter - Five years to the end of June 2007

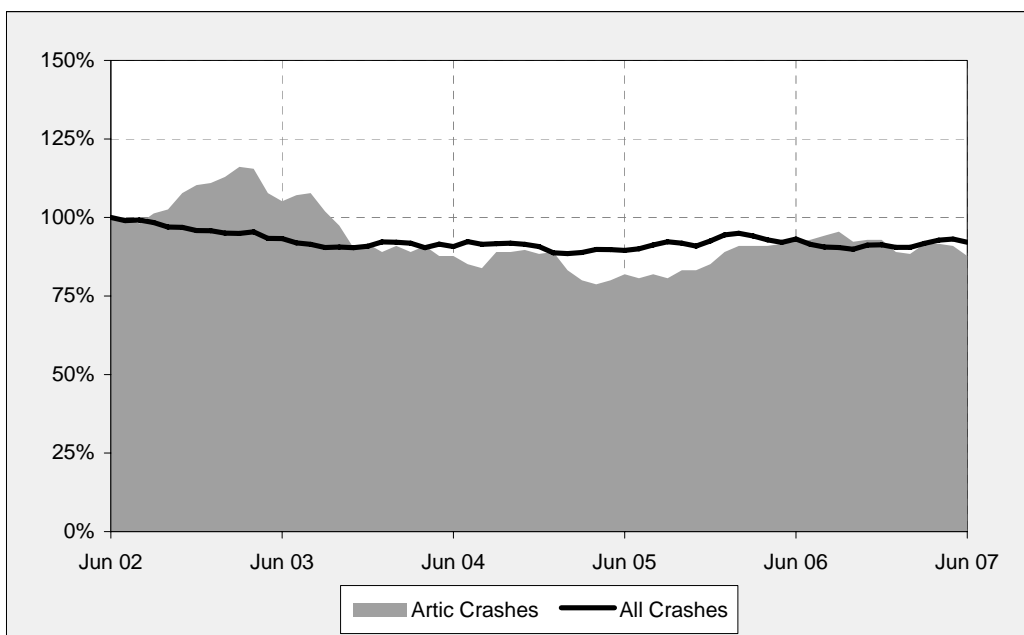
	NSW	Vic	Qld	SA	WA	Tas	NT	ACT	Australia
Jul - Sep 2002	18	4	4	6	0	1	0	0	33
Oct - Dec 2002	22	12	8	1	6	0	2	0	51
Jan - Mar 2003	12	12	8	7	5	0	1	0	45
Apr - Jun 2003	13	8	9	2	1	1	0	0	34
Jul - Sep 2003	11	6	6	3	2	0	0	0	28
Oct - Dec 2003	14	7	8	1	5	0	0	0	35
Jan - Mar 2004	16	13	3	1	6	2	0	0	41
Apr - Jun 2004	12	9	2	5	2	1	1	0	32
Jul - Sep 2004	11	5	5	2	5	1	1	0	30
Oct - Dec 2004	18	8	3	2	3	0	0	0	34
Jan - Mar 2005	10	7	4	5	1	1	0	0	28
Apr - Jun 2005	15	6	7	0	5	2	0	0	35
Jul - Sep 2005	7	5	7	7	2	0	0	0	28
Oct - Dec 2005	13	10	9	3	3	2	1	0	41
Jan - Mar 2006	18	5	6	3	1	3	1	0	37
Apr - Jun 2006	14	7	8	2	5	0	1	0	37
Jul - Sep 2006	8	8	12	1	1	3	0	0	33
Oct - Dec 2006	17	6	8	3	3	0	0	0	37
Jan - Mar 2007	16	9	4	0	4	1	1	0	35
Apr - Jun 2007	10	5	11	2	2	0	1	0	31

12 month periods to the end of June 2007 and June 2006

Jul 2006 - Jun 2007	51	28	35	6	10	4	2	0	136
Jul 2005 - Jun 2006	52	27	30	15	11	5	3	0	143
% change	-1.9	3.7	16.7	-60.0	-9.1	-20.0	-33.3	-	-4.9

Annual count of fatal crashes involving articulated trucks in Australia - Five years to the end of June 2007

Each point shows the number of fatal crashes in the preceding 12 months expressed as a percentage of the number of fatal crashes in the 12 months to the end of June 2002.



Articulated Trucks - Deaths

Deaths from crashes involving articulated trucks by State/Territory by quarter - Five years to the end of June 2007

	NSW	Vic	Qld	SA	WA	Tas	NT	ACT	Australia
Jul - Sep 2002	21	5	5	6	0	1	0	0	38
Oct - Dec 2002	22	16	10	2	6	0	6	0	62
Jan - Mar 2003	13	17	9	7	7	0	1	0	54
Apr - Jun 2003	17	9	10	2	1	1	0	0	40
Jul - Sep 2003	16	8	7	3	2	0	0	0	36
Oct - Dec 2003	17	7	9	1	7	0	0	0	41
Jan - Mar 2004	19	14	3	1	7	2	0	0	46
Apr - Jun 2004	15	9	2	6	2	1	1	0	36
Jul - Sep 2004	12	5	5	4	5	1	1	0	33
Oct - Dec 2004	18	9	3	2	3	0	0	0	35
Jan - Mar 2005	11	9	5	7	1	1	0	0	34
Apr - Jun 2005	18	6	7	0	7	2	0	0	40
Jul - Sep 2005	7	5	8	7	2	0	0	0	29
Oct - Dec 2005	16	12	15	3	3	2	1	0	52
Jan - Mar 2006	25	6	6	3	1	3	1	0	45
Apr - Jun 2006	16	9	9	2	6	0	1	0	43
Jul - Sep 2006	9	9	14	1	1	5	0	0	39
Oct - Dec 2006	19	7	8	4	3	0	0	0	41
Jan - Mar 2007	16	13	5	0	4	2	1	0	41
Apr - Jun 2007	11	16	12	3	2	0	1	0	45

12 month periods to the end of June 2007 and June 2006

Jul 2006 - Jun 2007	55	45	39	8	10	7	2	0	166
Jul 2005 - Jun 2006	64	32	38	15	12	5	3	0	169
% change	-14.1	40.6	2.6	-46.7	-16.7	40.0	-33.3	-	-1.8

Deaths from crashes involving articulated trucks by State/Territory by road user - 12 months to the end of June 2007

	NSW	Vic	Qld	SA	WA	Tas	NT	ACT	Australia
Drivers ^a	38	25	26	2	5	4	1	0	101
Passengers ^a	6	17	8	3	2	3	1	0	40
Pedestrians	9	3	2	2	3	0	0	0	19
Motor cyclists ^b	1	0	1	0	0	0	0	0	2
Cyclists	1	0	2	1	0	0	0	0	4
All road users ^c	55	45	39	8	10	7	2	0	166

^a Includes drivers/passengers of light vehicles

^b Includes pillion passengers

^c Includes road users not separately specified

Deaths from crashes involving articulated trucks by State/Territory by crash type - 12 months to the end of June 2007

	NSW	Vic	Qld	SA	WA	Tas	NT	ACT	Australia
Pedestrian crashes	9	3	2	2	3	0	0	0	19
Other single vehicle crashes	12	7	10	0	0	0	0	0	29
Multiple vehicle crashes	34	35	27	6	7	7	2	0	118
All crash types	55	45	39	8	10	7	2	0	166

Heavy Rigid Trucks - Fatal Crashes

Fatal crashes involving heavy rigid trucks by State/Territory by quarter -
Five years to the end of June 2007

	NSW	Vic	Qld	SA	WA	Tas	NT	ACT	Australia
<i>Jul - Sep 2002</i>	11	N/A	5	4	N/A	N/A	0	0	N/A
<i>Oct - Dec 2002</i>	10	N/A	2	2	N/A	N/A	3	1	N/A
<i>Jan - Mar 2003</i>	2	N/A	4	2	N/A	N/A	0	1	N/A
<i>Apr - Jun 2003</i>	4	N/A	6	3	N/A	N/A	1	0	N/A
<i>Jul - Sep 2003</i>	3	N/A	2	2	N/A	N/A	1	0	N/A
<i>Oct - Dec 2003</i>	10	N/A	5	1	N/A	N/A	0	1	N/A
<i>Jan - Mar 2004</i>	8	6	5	2	3	3	0	0	27
<i>Apr - Jun 2004</i>	6	6	3	1	0	0	0	0	16
<i>Jul - Sep 2004</i>	6	3	6	3	2	1	0	0	21
<i>Oct - Dec 2004</i>	10	4	5	1	2	0	0	0	22
<i>Jan - Mar 2005</i>	5	11	1	1	N/A	0	1	0	N/A
<i>Apr - Jun 2005</i>	8	7	4	0	N/A	2	0	0	N/A
<i>Jul - Sep 2005</i>	7	4	3	2	N/A	0	0	1	N/A
<i>Oct - Dec 2005</i>	6	2	2	0	N/A	0	0	0	N/A
<i>Jan - Mar 2006</i>	5	N/A	3	1	1	1	0	0	N/A
<i>Apr - Jun 2006</i>	5	N/A	3	2	2	0	1	0	N/A
<i>Jul - Sep 2006</i>	4	N/A	5	2	2	1	0	0	N/A
<i>Oct - Dec 2006</i>	10	N/A	4	0	3	1	0	0	N/A
<i>Jan - Mar 2007</i>	2	N/A	2	3	3	0	0	0	N/A
<i>Apr - Jun 2007</i>	7	N/A	5	0	1	2	0	0	N/A
12 month periods to the end of June 2007 and June 2006									
<i>Jul 2006 - Jun 2007</i>	23	N/A	16	5	9	4	0	0	N/A
<i>Jul 2005 - Jun 2006</i>	23	N/A	11	5	N/A	1	1	1	N/A
% change	0.0	N/A	45.5	0.0	N/A	300.0	-100.0	-100.0	N/A

Heavy Rigid Trucks - Deaths

Deaths from crashes involving heavy rigid trucks by State/Territory by quarter - Five years to the end of June 2007

	NSW	Vic	Qld	SA	WA	Tas	NT	ACT	Australia
Jul - Sep 2002	12	N/A	5	4	N/A	N/A	0	0	N/A
Oct - Dec 2002	11	N/A	2	2	N/A	N/A	3	1	N/A
Jan - Mar 2003	3	N/A	4	2	N/A	N/A	0	1	N/A
Apr - Jun 2003	4	N/A	6	3	N/A	N/A	1	0	N/A
Jul - Sep 2003	3	N/A	2	2	N/A	N/A	1	0	N/A
Oct - Dec 2003	13	N/A	6	1	N/A	N/A	0	1	N/A
Jan - Mar 2004	10	6	5	2	3	3	0	0	29
Apr - Jun 2004	8	6	4	1	0	0	0	0	19
Jul - Sep 2004	10	3	7	3	2	1	0	0	26
Oct - Dec 2004	10	4	6	1	2	0	0	0	23
Jan - Mar 2005	5	13	1	1	N/A	0	1	0	N/A
Apr - Jun 2005	9	7	5	0	N/A	2	0	0	N/A
Jul - Sep 2005	7	5	4	2	N/A	0	0	1	N/A
Oct - Dec 2005	7	2	3	0	N/A	0	0	0	N/A
Jan - Mar 2006	7	N/A	3	1	1	1	0	0	N/A
Apr - Jun 2006	7	N/A	3	2	2	0	1	0	N/A
Jul - Sep 2006	4	N/A	5	2	3	1	0	0	N/A
Oct - Dec 2006	12	N/A	5	0	3	1	0	0	N/A
Jan - Mar 2007	2	N/A	2	3	3	0	0	0	N/A
Apr - Jun 2007	8	N/A	5	0	1	2	0	0	N/A

12 month periods to the end of June 2007 and June 2006

Jul 2006 - Jun 2007	26	N/A	17	5	10	4	0	0	N/A
Jul 2005 - Jun 2006	28	N/A	13	5	N/A	1	1	1	N/A
% change	-7.1	N/A	30.8	0.0	N/A	300.0	-100.0	-100.0	N/A

Deaths from crashes involving heavy rigid trucks by State/Territory by road user - 12 months to the end of June 2007

	NSW	Vic	Qld	SA	WA	Tas	NT	ACT	Australia
Drivers ^a	10	N/A	12	2	6	2	0	0	N/A
Passengers ^a	8	N/A	2	0	1	2	0	0	N/A
Pedestrians	4	N/A	1	0	1	0	0	0	N/A
Motor cyclists ^b	2	N/A	1	1	2	0	0	0	N/A
Cyclists	2	N/A	1	2	0	0	0	0	N/A
All road users ^c	26	N/A	17	5	10	4	0	0	N/A

^a Includes drivers/passengers of light vehicles

^b Includes pillion passengers

^c Includes road users not separately specified

Deaths from crashes involving heavy rigid trucks by State/Territory by crash type - 12 months to the end of June 2007

	NSW	Vic	Qld	SA	WA	Tas	NT	ACT	Australia
Pedestrian crashes	4	N/A	1	0	1	0	0	0	N/A
Other single vehicle crashes	2	N/A	4	1	0	1	0	0	N/A
Multiple vehicle crashes	20	N/A	12	4	9	3	0	0	N/A
All crash types	26	N/A	17	5	10	4	0	0	N/A

Buses - Fatal Crashes

Fatal crashes involving buses by State/Territory by quarter - Five years to the end of June 2007

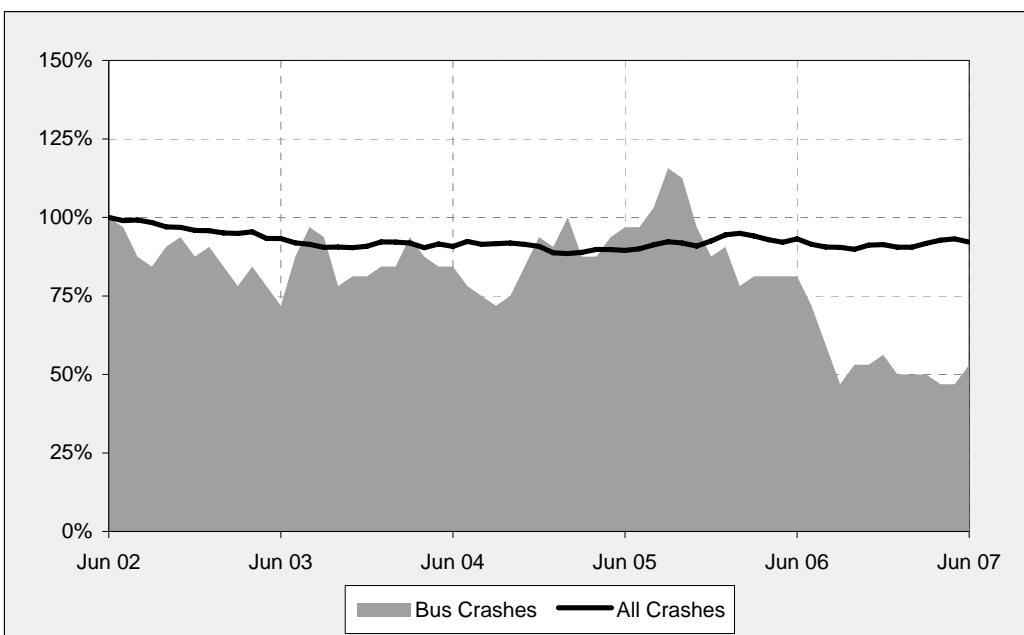
	NSW	Vic	Qld	SA	WA	Tas	NT	ACT	Australia
Jul - Sep 2002	1	1	1	0	0	0	0	0	3
Oct - Dec 2002	2	2	2	1	1	0	0	0	8
Jan - Mar 2003	4	0	1	0	0	0	0	0	5
Apr - Jun 2003	2	2	2	0	0	1	0	0	7
Jul - Sep 2003	3	1	1	2	2	0	1	0	10
Oct - Dec 2003	4	0	0	0	0	0	0	0	4
Jan - Mar 2004	3	2	2	1	0	0	0	1	9
Apr - Jun 2004	1	1	2	0	0	0	0	0	4
Jul - Sep 2004	3	1	1	1	0	0	0	0	6
Oct - Dec 2004	8	2	1	0	0	0	0	0	11
Jan - Mar 2005	5	1	0	0	1	0	0	0	7
Apr - Jun 2005	5	0	2	0	0	0	0	0	7
Jul - Sep 2005	4	2	5	1	0	0	0	0	12
Oct - Dec 2005	1	1	0	0	0	0	0	0	2
Jan - Mar 2006	2	2	1	0	0	0	0	0	5
Apr - Jun 2006	3	0	2	1	0	1	0	0	7
Jul - Sep 2006	0	0	1	0	0	0	0	0	1
Oct - Dec 2006	2	1	1	0	1	0	0	0	5
Jan - Mar 2007	0	1	2	0	0	0	0	0	3
Apr - Jun 2007	4	1	3	0	0	0	0	0	8

12 month periods to the end of June 2007 and June 2006

Jul 2006 - Jun 2007	6	3	7	0	1	0	0	0	17
Jul 2005 - Jun 2006	10	5	8	2	0	1	0	0	26
% change	-40.0	-40.0	-12.5	-100.0	-	-100.0	-	-	-34.6

Annual count of fatal crashes involving buses in Australia - Five years to the end of June 2007

Each point shows the number of fatal crashes in the preceding 12 months expressed as a percentage of the number of fatal crashes in the 12 months to the end of June 2002.



Buses - Deaths

Deaths from crashes involving buses by State/Territory by quarter - Five years to the end of June 2007

	NSW	Vic	Qld	SA	WA	Tas	NT	ACT	Australia
Jul - Sep 2002	1	1	1	0	0	0	0	0	3
Oct - Dec 2002	2	2	2	4	2	0	0	0	12
Jan - Mar 2003	5	0	1	0	0	0	0	0	6
Apr - Jun 2003	2	2	2	0	0	1	0	0	7
Jul - Sep 2003	4	1	1	3	2	0	1	0	12
Oct - Dec 2003	4	0	0	0	0	0	0	0	4
Jan - Mar 2004	3	2	2	1	0	0	0	1	9
Apr - Jun 2004	1	1	2	0	0	0	0	0	4
Jul - Sep 2004	3	1	1	1	0	0	0	0	6
Oct - Dec 2004	8	2	1	0	0	0	0	0	11
Jan - Mar 2005	5	1	0	0	1	0	0	0	7
Apr - Jun 2005	9	0	2	0	0	0	0	0	11
Jul - Sep 2005	6	2	7	1	0	0	0	0	16
Oct - Dec 2005	1	2	0	0	0	0	0	0	3
Jan - Mar 2006	2	2	1	0	0	0	0	0	5
Apr - Jun 2006	3	0	2	1	0	1	0	0	7
Jul - Sep 2006	0	0	1	0	0	0	0	0	1
Oct - Dec 2006	2	1	1	0	1	0	0	0	5
Jan - Mar 2007	0	1	2	0	0	0	0	0	3
Apr - Jun 2007	4	1	3	0	0	0	0	0	8

12 month periods to the end of June 2007 and June 2006

Jul 2006 - Jun 2007	6	3	7	0	1	0	0	0	17
Jul 2005 - Jun 2006	12	6	10	2	0	1	0	0	31
% change	-50.0	-50.0	-30.0	-100.0	-	-100.0	-	-	-45.2

Deaths from crashes involving buses by State/Territory by road user - 12 months to the end of June 2007

	NSW	Vic	Qld	SA	WA	Tas	NT	ACT	Australia
Drivers ^a	2	1	0	0	0	0	0	0	3
Passengers ^a	0	1	0	0	1	0	0	0	2
Pedestrians	2	1	3	0	0	0	0	0	6
Motor cyclists ^b	1	0	2	0	0	0	0	0	3
Cyclists	1	0	2	0	0	0	0	0	3
All road users ^c	6	3	7	0	1	0	0	0	17

^a Includes drivers/passengers of light vehicles

^b Includes pillion passengers

^c Includes road users not separately specified

Deaths from crashes involving buses by State/Territory by crash type - 12 months to the end of June 2007

	NSW	Vic	Qld	SA	WA	Tas	NT	ACT	Australia
Pedestrian crashes	2	1	3	0	0	0	0	0	6
Other single vehicle crashes	0	0	0	0	1	0	0	0	1
Multiple vehicle crashes	4	2	4	0	0	0	0	0	10
All crash types	6	3	7	0	1	0	0	0	17