



Australian Government
Australian Transport Safety Bureau

ISSN 1449-1168

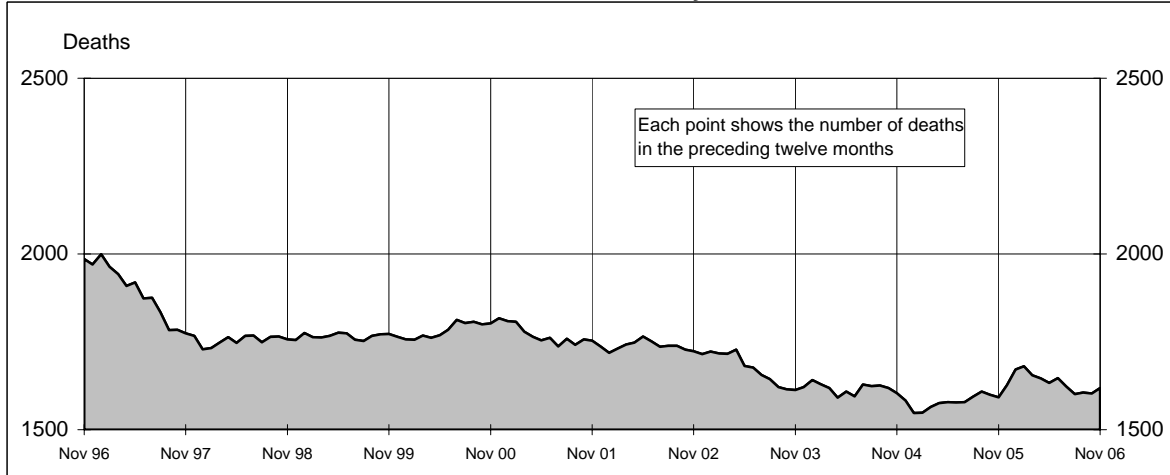
Road Deaths AUSTRALIA



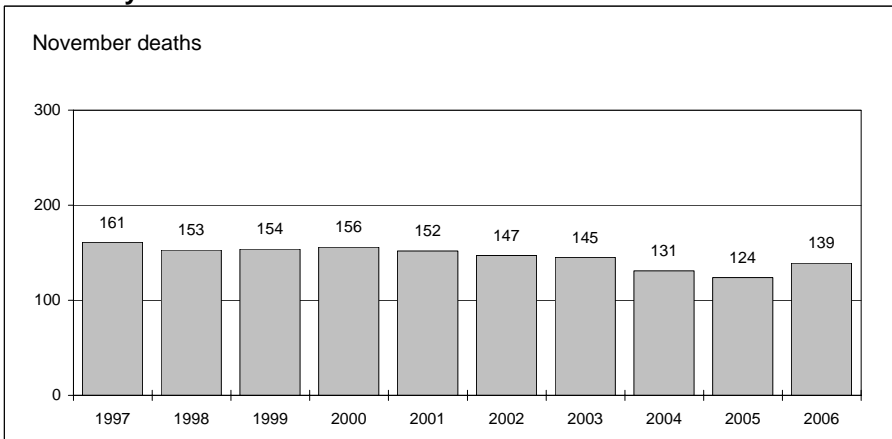
Monthly Bulletin

November 2006

Australian road deaths for 12 months to date - last 10 years



Australian road deaths for November - last 10 years



Inquiries

For further information about data in this bulletin, contact:

The Editor
Transport Safety Statistics Unit
Australian Transport Safety Bureau
PO Box 967,
Civic Square, ACT 2608

Email: stats@atsb.gov.au
Internet: www.atsb.gov.au

Data Sources

The data presented here are obtained from the following sources:

Roads and Traffic Authority, NSW
Vicroads
Queensland Transport
South Australian Police Department
Western Australian Police Service
Department of Infrastructure,
Energy and Resources, Tasmania
Northern Territory Police,
Fire & Emergency Services
Department of Urban Services, ACT

Note

Road death statistics for recent months are preliminary and subject to revision. They include any deaths occurring within 30 days of a crash stemming from injuries received in the crash.

© Australian Government

This month's key figures

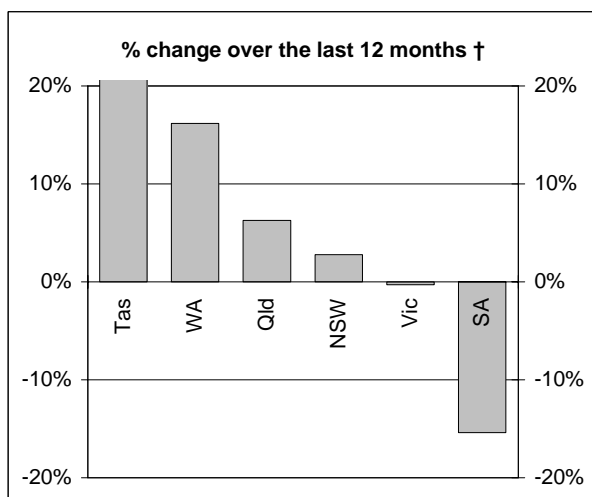
The total number of road deaths in November 2006 was 139
- this is a 12.1% increase over the November 2005 figure.

The number of road deaths in 2006 to the end of November is 1,456
- this is a 0.6% decrease from the same 11 month period in 2005.

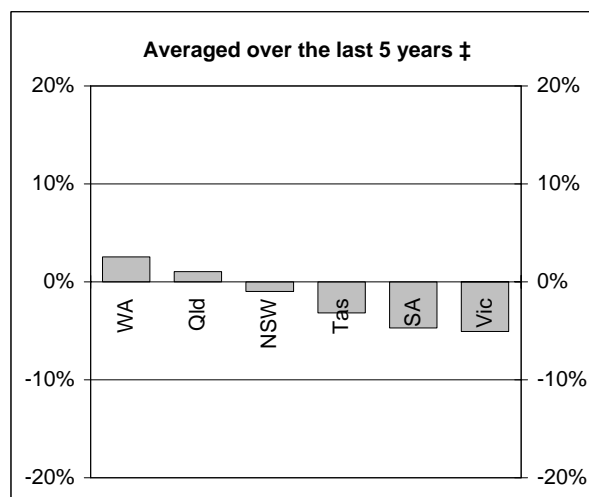
AUSTRALIAN GOVERNMENT DEPARTMENT OF TRANSPORT AND REGIONAL SERVICES

NUMBER OF ROAD CRASH DEATHS

Percentage change in road deaths in each State



† Percentage change between the 12-month periods of Dec 2004 - Nov 2005 and Dec 2005 - Nov 2006



‡ Average annual percentage change over each of the 12-month periods from Dec 2000 - Nov 2001 to Dec 2005 - Nov 2006

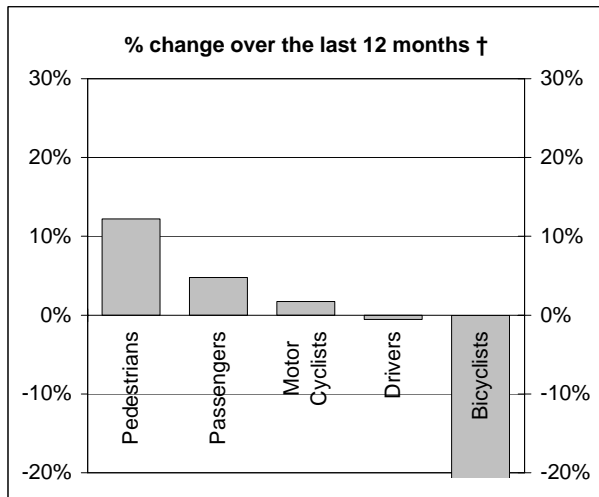
Road deaths by State/Territory for month, year to date, and twelve months - period ended November 2006 and period ended November 2005

	NSW	Vic	Qld	SA	WA	Tas	NT	ACT	Australia
Current month									
Nov 2006	38	32	31	8	16	9	4	1	139
Nov 2005	37	17	30	14	13	6	5	2	124
% change	2.7	88.2	3.3	-42.9	23.1	50.0	-20.0	-50.0	12.1
Year to date									
Jan 2006 - Nov 2006	470	300	302	107	179	49	39	10	1456
Jan 2005 - Nov 2005	462	310	293	134	148	43	50	25	1465
% change	1.7	-3.2	3.1	-20.1	20.9	14.0	-22.0	-60.0	-0.6
12-months to date									
Dec 2005 - Nov 2006	516	336	339	121	194	57	44	11	1618
Dec 2004 - Nov 2005	502	337	319	143	167	45	54	25	1592
Difference	14	-1	20	-22	27	12	-10	-14	26
% change	2.8	-0.3	6.3	-15.4	16.2	26.7	-18.5	-56.0	1.6
Ave annual % change (a)									
Nov 2001 to Nov 2006	-1.0	-5.1	1.0	-4.7	2.6	-3.2	-0.9	-6.0	-1.6

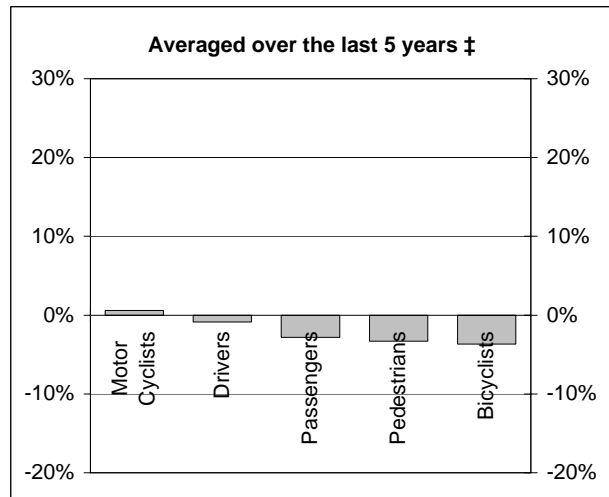
(a) This represents the average annual exponential change between the annual count of 5 years ago and the current annual count

DEATHS IN EACH ROAD USER GROUP

Percentage change in deaths in each road user group



† Percentage change between the 12-month periods of Dec 2004 - Nov 2005 and Dec 2005 - Nov 2006



‡ Average annual percentage change over each of the 12-month periods from Dec 2000 - Nov 2001 to Dec 2005 - Nov 2006

Road deaths by road user group and gender for twelve months ended November 2006 and twelve months ended November 2005

	Drivers	Passengers	Pedestrians	Motor cyclists (a)	Bicyclists	All road users (b)
Males						
Dec 2005 - Nov 2006	580	206	158	223	29	1196
Dec 2004 - Nov 2005	600	169	137	223	37	1170
% change	-3.3	21.9	15.3	0.0	-21.6	2.2
Females						
Dec 2005 - Nov 2006	178	144	80	13	5	420
Dec 2004 - Nov 2005	163	163	76	9	8	420
% change	9.2	-11.7	5.3	44.4	-37.5	0.0
Persons (c)						
Dec 2005 - Nov 2006	759	350	239	236	34	1618
Dec 2004 - Nov 2005	763	334	213	232	45	1592
% change	-0.5	4.8	12.2	1.7	-24.4	1.6
Ave annual % change (d)						
Nov 2001 to Nov 2006	-0.9	-2.8	-3.3	0.6	-3.7	-1.6

(a) Includes pillion passengers

(b) Includes road users not separately specified

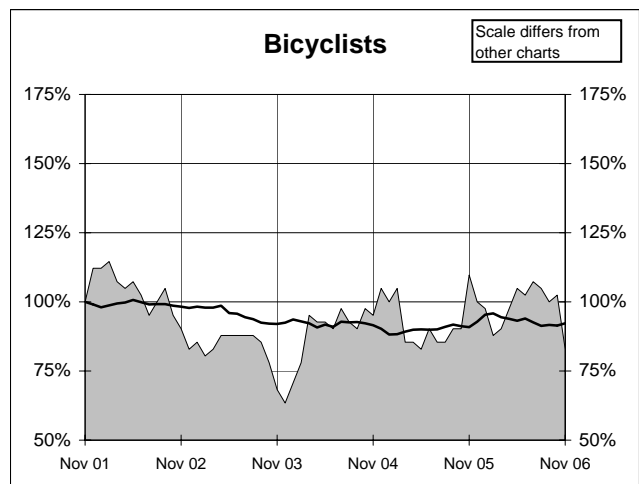
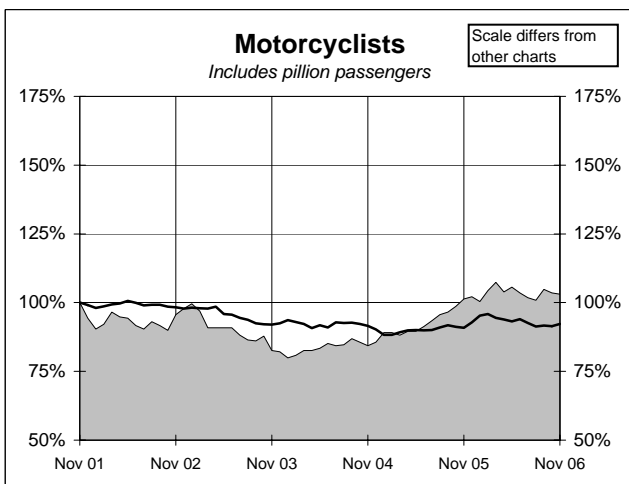
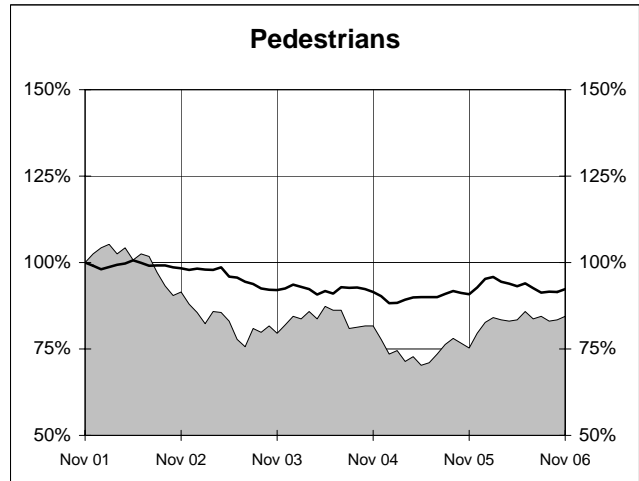
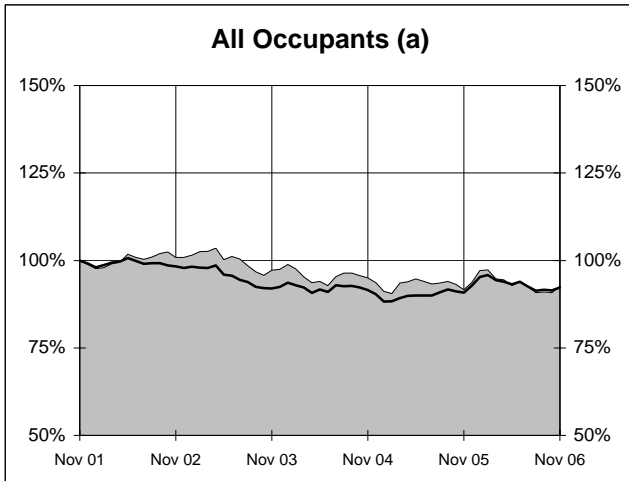
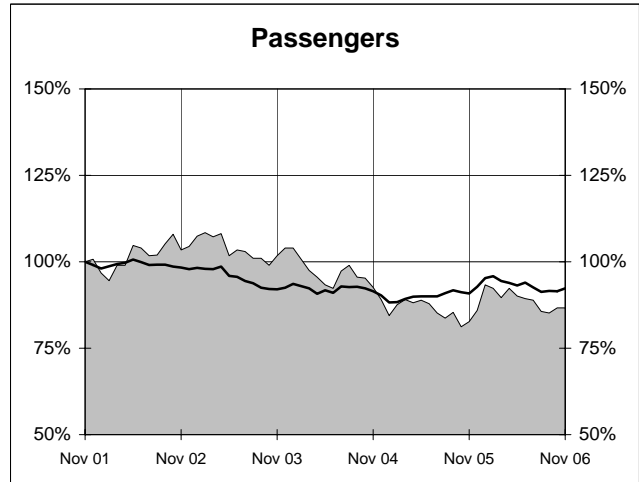
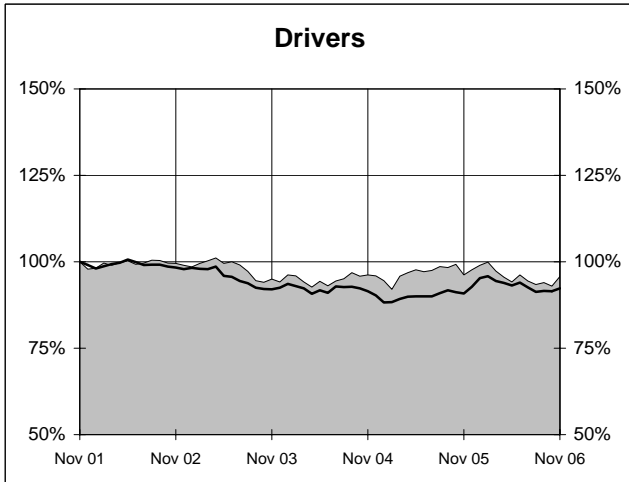
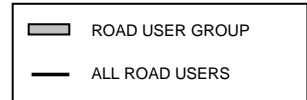
(c) Includes road users with unstated gender

(d) This represents the average annual exponential change between the annual count of 5 years ago and the current annual count

DEATHS IN EACH ROAD USER GROUP - TRENDS

Annual deaths in each road user group - last 5 years

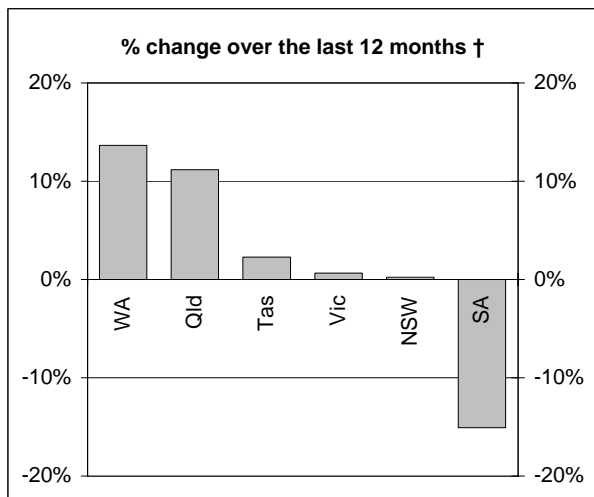
The number shown at each month represents the number of deaths in the preceding 12 months expressed as a percentage of the number of deaths in the 12 months to November 2001.



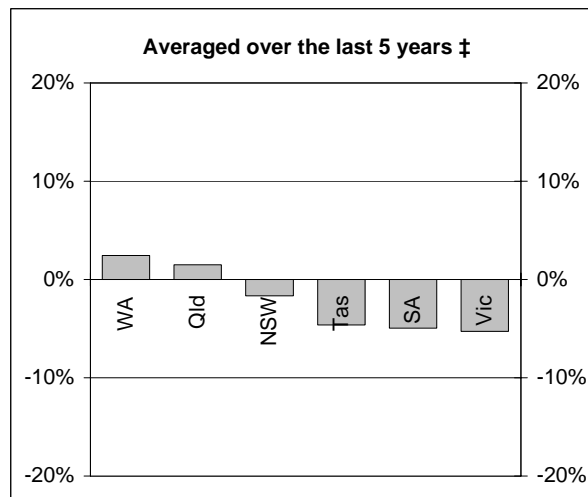
(a) Includes drivers and passengers

NUMBER OF FATAL ROAD CRASHES

Percentage change in fatal crashes in each State



† Percentage change between the 12-month periods of Dec 2004 - Nov 2005 and Dec 2005 - Nov 2006



‡ Average annual percentage change over each of the 12-month periods from Dec 2000 - Nov 2001 to Dec 2005 - Nov 2006

Fatal crashes by State/Territory for month, year to date and twelve months - period ended November 2006 and period ended November 2005

	NSW	Vic	Qld	SA	WA	Tas	NT	ACT	Australia
Current month									
Nov 2006	35	30	29	7	16	8	4	1	130
Nov 2005	32	16	24	12	12	6	4	2	108
% change	9.4	87.5	20.8	-41.7	33.3	33.3	0.0	-50.0	20.4
Year to date									
Jan 2006 - Nov 2006	424	272	283	97	161	38	36	10	1321
Jan 2005 - Nov 2005	422	281	261	117	137	42	46	24	1330
% change	0.5	-3.2	8.4	-17.1	17.5	-9.5	-21.7	-58.3	-0.7
12 months to date									
Dec 2005 - Nov 2006	461	305	318	107	175	45	41	11	1463
Dec 2004 - Nov 2005	460	303	286	126	154	44	49	24	1446
% change	0.2	0.7	11.2	-15.1	13.6	2.3	-16.3	-54.2	1.2
Ave annual % change (a)									
Nov 2001 to Nov 2006	-1.7	-5.3	1.5	-5.0	2.5	-4.6	0.0	-6.0	-1.8

(a) This represents the average annual exponential change between the annual count of 5 years ago and the current annual count

FATAL CRASHES INVOLVING TRUCKS AND BUSES

Fatal crashes and deaths involving articulated trucks and buses -
 twelve months ended November 2006 and twelve months ended November 2005

	NSW	Vic	Qld	SA	WA	Tas	NT	ACT	Australia
--	-----	-----	-----	----	----	-----	----	-----	-----------

FATAL CRASHES INVOLVING ARTICULATED TRUCKS

Number of crashes

Dec 2005 - Nov 2006	59	N/A	32	9	8	8	3	0	
Dec 2004 - Nov 2005	43	29	26	16	12	3	1	0	

Number of deaths

Dec 2005 - Nov 2006	71	N/A	35	9	9	10	3	0	
Dec 2004 - Nov 2005	49	33	34	18	14	3	1	0	

Note: Data on heavy rigid trucks not currently available

FATAL CRASHES INVOLVING BUSES

Number of crashes

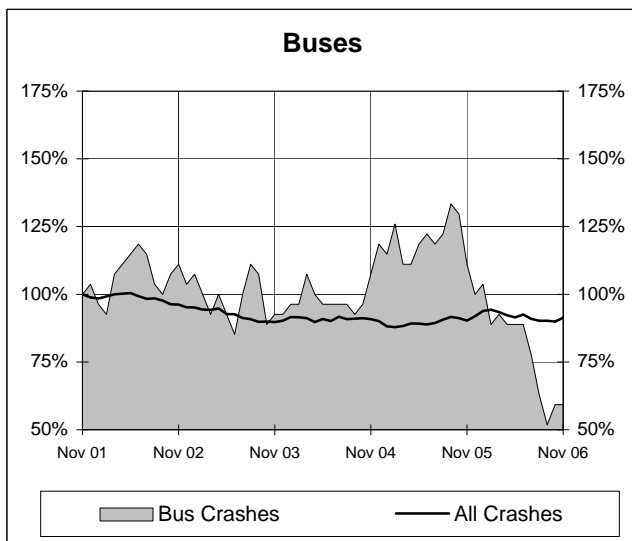
Dec 2005 - Nov 2006	7	2	5	0	1	1	0	0	16
Dec 2004 - Nov 2005	17	5	7	0	1	0	0	0	30
									(-46.7%)

Number of deaths

Dec 2005 - Nov 2006	7	2	5	0	1	1	0	0	16
Dec 2004 - Nov 2005	23	6	9	0	1	0	0	0	39
									(-59.0%)

Annual count of fatal crashes involving buses - last 5 years

The number shown at each month represents the number of fatal crashes in the preceding 12 months expressed as a percentage of the number of fatal crashes in the 12 months to November 2001.



CHARACTERISTICS OF FATAL CRASHES

Proportion (per cent) of fatal crashes by speed limit, crash type, time of day, and time of week - two years ended November 2006 and two years ended November 2001

	<i>Speed limit (km/h) (a)</i>			<i>Time of Day</i>	
	<i>Up to 60</i>	<i>65-95</i>	<i>100+</i>	<i>Day time</i>	<i>Night-time (b)</i>
<i>Dec 2004 - Nov 2006</i>	32.7	22.8	44.6	55.5	44.5
<i>Dec 1999 - Nov 2001</i>	33.2	21.2	45.6	55.8	44.2

	<i>Crash Type</i>			<i>Time of week</i>	
	<i>Pedestrian crash</i>	<i>Other single veh. crash</i>	<i>Other multiple veh. crash</i>	<i>Week day</i>	<i>Week-end (c)</i>
<i>Dec 2004 - Nov 2006</i>	15.2	45.9	38.9	57.6	42.4
<i>Dec 1999 - Nov 2001</i>	17.9	40.8	41.3	61.0	39.0

(a) Excludes ACT

(b) 6:00 pm to 5:59 am

(c) 6:00 pm Friday to 5:59 am Monday