



Australian Government  
Australian Transport Safety Bureau

ISSN 1449-1168

# Road Deaths

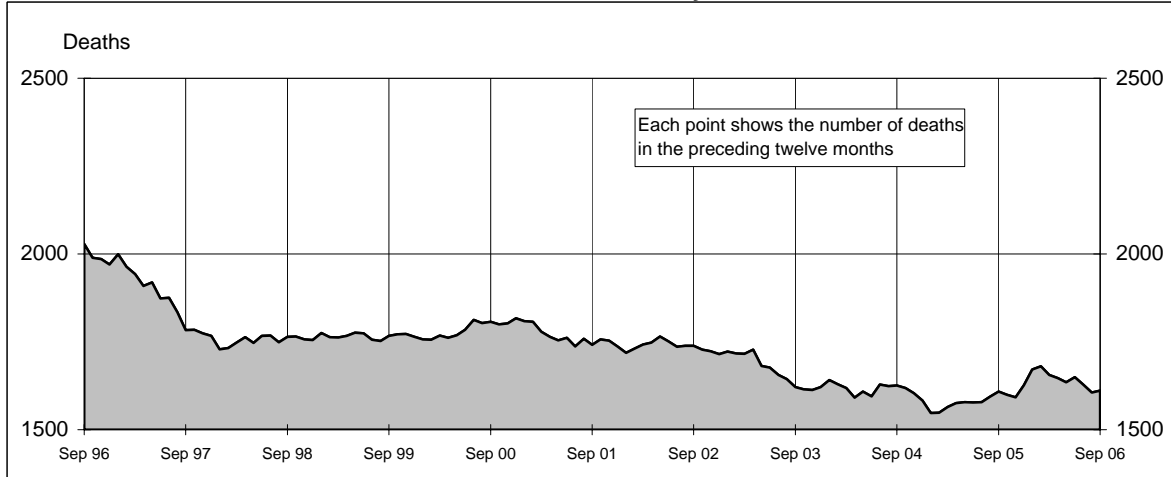
## AUSTRALIA



Monthly Bulletin

September 2006

### Australian road deaths for 12 months to date - last 10 years



### Australian road deaths for September - last 10 years

#### Inquiries

For further information about data in this bulletin, contact:

The Editor  
Transport Safety Statistics Unit  
Australian Transport Safety Bureau  
PO Box 967,  
Civic Square, ACT 2608  
Email: [stats@atsb.gov.au](mailto:stats@atsb.gov.au)  
Internet: [www.atsb.gov.au](http://www.atsb.gov.au)

#### Data Sources

The data presented here are obtained from the following sources:

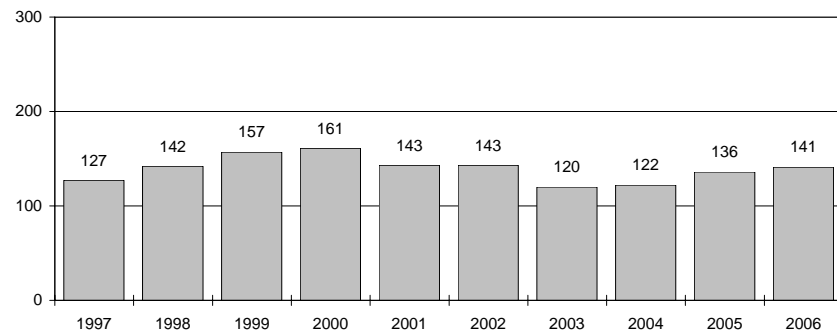
Roads and Traffic Authority, NSW  
Vicroads  
Queensland Transport  
South Australian Police Department  
Western Australian Police Service  
Department of Infrastructure, Energy and Resources, Tasmania  
Northern Territory Police,  
Fire & Emergency Services  
Department of Urban Services, ACT

#### Note

Road death statistics for recent months are preliminary and subject to revision. They include any deaths occurring within 30 days of a crash stemming from injuries received in the crash.

© Australian Government

#### September deaths



### This month's key figures

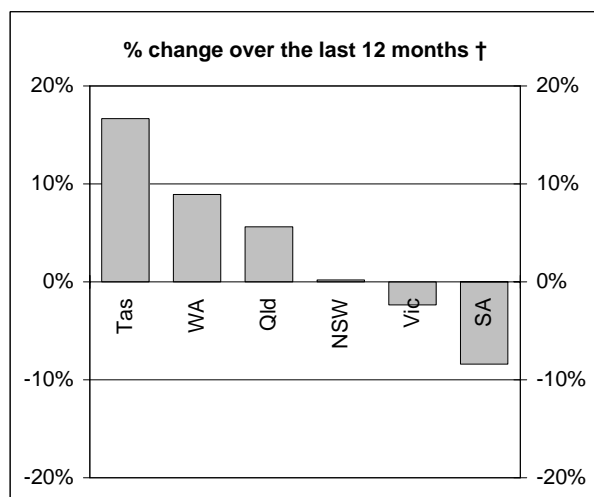
The total number of road deaths in September 2006 was 141  
- this is a 3.7% increase over the September 2005 figure.

The number of road deaths in 2006 to the end of September is 1,196  
- this is a 1.3% decrease from the same 9 month period in 2005.

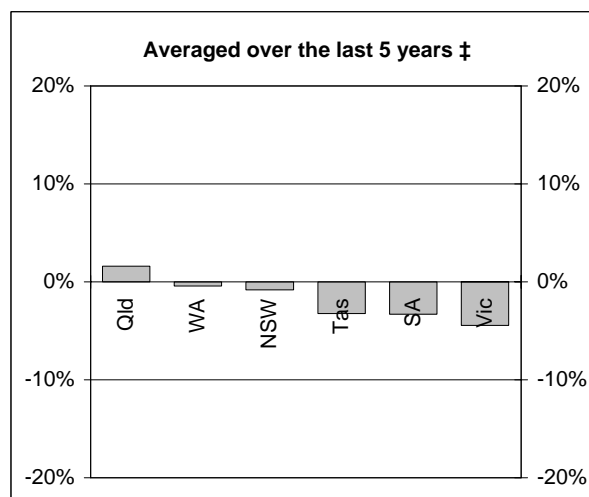
AUSTRALIAN GOVERNMENT DEPARTMENT OF TRANSPORT AND REGIONAL SERVICES

# NUMBER OF ROAD CRASH DEATHS

## Percentage change in road deaths in each State



† Percentage change between the 12-month periods of Oct 2004 - Sep 2005 and Oct 2005 - Sep 2006



‡ Average annual percentage change over each of the 12-month periods from Oct 2000 - Sep 2001 to Oct 2005 - Sep 2006

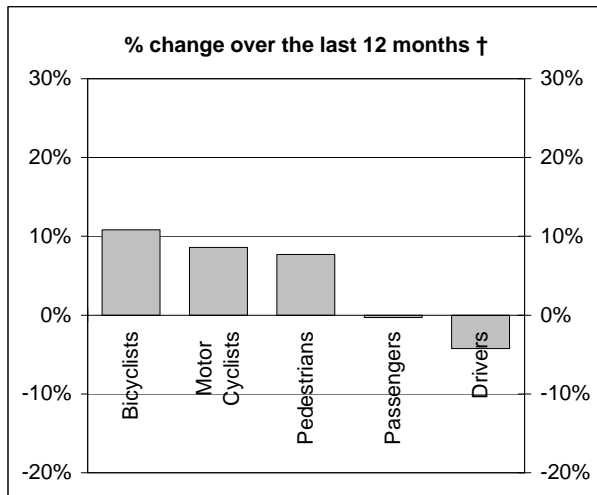
## Road deaths by State/Territory for month, year to date, and twelve months - period ended September 2006 and period ended September 2005

	NSW	Vic	Qld	SA	WA	Tas	NT	ACT	Australia
<b>Current month</b>									
Sep 2006	35	43	32	8	16	5	1	1	141
Sep 2005	44	25	25	8	18	5	8	3	136
% change	-20.5	72.0	28.0	0.0	-11.1	0.0	-87.5	-66.7	3.7
<b>Year to date</b>									
Jan 2006 - Sep 2006	393	246	241	95	146	38	30	7	1196
Jan 2005 - Sep 2005	385	260	233	112	126	33	42	21	1212
% change	2.1	-5.4	3.4	-15.2	15.9	15.2	-28.6	-66.7	-1.3
<b>12-months to date</b>									
Oct 2005 - Sep 2006	516	332	338	131	183	56	43	12	1611
Oct 2004 - Sep 2005	515	340	320	143	168	48	51	23	1608
Difference	1	-8	18	-12	15	8	-8	-11	3
% change	0.2	-2.4	5.6	-8.4	8.9	16.7	-15.7	-47.8	0.2
<b>Ave annual % change (a)</b>									
Sep 2001 to Sep 2006	-0.8	-4.5	1.6	-3.3	-0.4	-3.2	-2.2	-7.8	-1.5

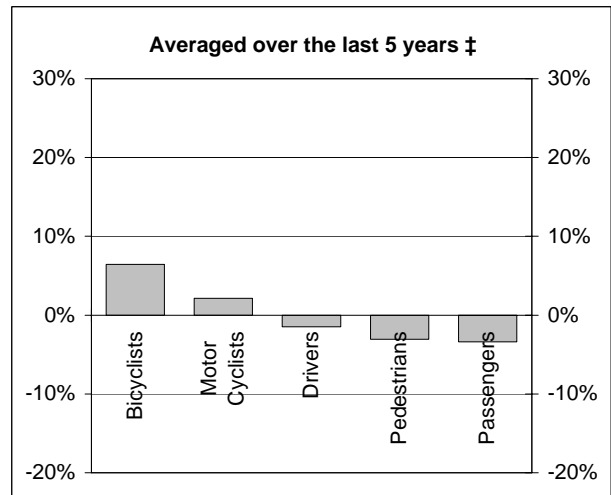
(a) This represents the average annual exponential change between the annual count of 5 years ago and the current annual count

# DEATHS IN EACH ROAD USER GROUP

## Percentage change in deaths in each road user group



† Percentage change between the 12-month periods of Oct 2004 - Sep 2005 and Oct 2005 - Sep 2006



‡ Average annual percentage change over each of the 12-month periods from Oct 2000 - Sep 2001 to Oct 2005 - Sep 2006

## Road deaths by road user group and gender for twelve months ended September 2006 and twelve months ended September 2005

	Drivers	Passengers	Pedestrians	Motor cyclists (a)	Bicyclists	All road users (b)
<b>Males</b>						
Oct 2005 - Sep 2006	573	196	157	229	34	1190
Oct 2004 - Sep 2005	602	181	134	208	31	1159
% change	-4.8	8.3	17.2	10.1	9.7	2.7
<b>Females</b>						
Oct 2005 - Sep 2006	173	146	80	11	7	417
Oct 2004 - Sep 2005	178	164	87	13	6	449
% change	-2.8	-11.0	-8.0	-15.4	16.7	-7.1
<b>Persons (c)</b>						
Oct 2005 - Sep 2006	747	344	238	240	41	1611
Oct 2004 - Sep 2005	780	345	221	221	37	1608
% change	-4.2	-0.3	7.7	8.6	10.8	0.2
<b>Ave annual % change (d)</b>						
Sep 2001 to Sep 2006	-1.5	-3.4	-3.1	2.1	6.4	-1.5

(a) Includes pillion passengers

(b) Includes road users not separately specified

(c) Includes road users with unstated gender

(d) This represents the average annual exponential change between the annual count of 5 years ago and the current annual count

## DEATHS IN EACH ROAD USER GROUP - QUARTERLY REPORT

Road deaths by road user group and State/Territory for twelve months ended September 2006 and twelve months ended September 2005

	NSW	Vic	Qld	SA	WA	Tas	NT	ACT	Australia
<b>Drivers</b>									
Oct 2005 - Sep 2006	245	142	163	68	79	29	15	6	747
Oct 2004 - Sep 2005	249	171	147	74	89	22	22	6	780
% change	-1.6	-17.0	10.9	-8.1	-11.2	31.8	-31.8	-	-4.2
Ave annual % change (a) Sep 2001 to Sep 2006	0.8	-5.8	0.8	-4.4	-1.0	-0.7	1.4	-	-1.5
<b>Passengers</b>									
Oct 2005 - Sep 2006	107	68	71	26	45	17	10	0	344
Oct 2004 - Sep 2005	95	81	64	34	36	14	17	4	345
% change	12.6	-16.0	10.9	-23.5	25.0	21.4	-41.2	-	-0.3
Ave annual % change (a) Sep 2001 to Sep 2006	-5.0	-5.9	0.9	0.0	0.0	1.2	-12.9	-	-3.4
<b>Pedestrians</b>									
Oct 2005 - Sep 2006	83	63	44	10	23	1	12	2	238
Oct 2004 - Sep 2005	97	43	37	14	19	1	6	4	221
% change	-14.4	46.5	18.9	-28.6	21.1	0.0	100.0	-	7.7
Ave annual % change (a) Sep 2001 to Sep 2006	-0.2	-2.6	-0.4	-18.0	-1.7	-38.1	3.7	-	-3.1
<b>Motor cyclists (b)</b>									
Oct 2005 - Sep 2006	69	47	51	23	33	7	6	4	240
Oct 2004 - Sep 2005	64	39	67	18	17	7	1	8	221
% change	7.8	20.5	-23.9	27.8	94.1	0.0	500.0	-	8.6
Ave annual % change (a) Sep 2001 to Sep 2006	0.6	-4.1	9.8	10.4	0.6	-2.6	8.4	-	2.1
<b>Bicyclists</b>									
Oct 2005 - Sep 2006	12	12	9	3	3	2	0	0	41
Oct 2004 - Sep 2005	10	6	4	2	7	4	3	1	37
<b>All road users (c)</b>									
Oct 2005 - Sep 2006	516	332	338	131	183	56	43	12	1611
Oct 2004 - Sep 2005	515	340	320	143	168	48	51	23	1608
% change	0.2	-2.4	5.6	-8.4	8.9	16.7	-15.7	-47.8	0.2
Ave annual % change (a) Sep 2001 to Sep 2006	-0.8	-4.5	1.6	-3.3	-0.4	-3.2	-2.2	-7.8	-1.5

(a) This represents the average annual exponential change between the annual count of 5-years ago and the current annual count

(b) Includes pillion passengers

(c) Includes road users not separately classified

## DEATHS IN EACH ROAD USER GROUP - QUARTERLY REPORT

Road deaths by road user group and age for twelve months ended September 2006 and twelve months ended September 2005

	0-16 years	17-20 years	21-25 years	26-39 years	40-59 years	60+ years	<b>All fatalities(d)</b>
<b>Drivers</b>							
Oct 2005 - Sep 2006	9	103	118	202	181	129	747
Oct 2004 - Sep 2005	3	108	110	206	189	164	780
% change	<b>200.0</b>	<b>-4.6</b>	<b>7.3</b>	<b>-1.9</b>	<b>-4.2</b>	<b>-21.3</b>	<b>-4.2</b>
<i>Ave annual % change (a)</i>							
Sep 2001 to Sep 2006	<b>2.4</b>	<b>-3.6</b>	<b>5.1</b>	<b>-1.2</b>	<b>-2.6</b>	<b>-4.2</b>	<b>-1.5</b>
<b>Passengers</b>							
Oct 2005 - Sep 2006	78	75	38	55	56	39	344
Oct 2004 - Sep 2005	61	60	52	40	53	77	345
% change	<b>27.9</b>	<b>25.0</b>	<b>-26.9</b>	<b>37.5</b>	<b>5.7</b>	<b>-49.4</b>	<b>-0.3</b>
<i>Ave annual % change (a)</i>							
Sep 2001 to Sep 2006	<b>1.1</b>	<b>1.7</b>	<b>-8.1</b>	<b>0.4</b>	<b>-0.4</b>	<b>-16.7</b>	<b>-3.4</b>
<b>Pedestrians</b>							
Oct 2005 - Sep 2006	34	15	16	49	41	79	238
Oct 2004 - Sep 2005	16	19	17	42	40	87	221
% change	<b>112.5</b>	<b>-21.1</b>	<b>-5.9</b>	<b>16.7</b>	<b>2.5</b>	<b>-9.2</b>	<b>7.7</b>
<i>Ave annual % change (a)</i>							
Sep 2001 to Sep 2006	<b>-4.1</b>	<b>-2.5</b>	<b>-2.3</b>	<b>-0.4</b>	<b>-5.4</b>	<b>-4.0</b>	<b>-3.1</b>
<b>Motor cyclists (b)</b>							
Oct 2005 - Sep 2006	4	27	45	88	66	10	240
Oct 2004 - Sep 2005	6	18	42	85	56	14	221
% change	<b>-33.3</b>	<b>50.0</b>	<b>7.1</b>	<b>3.5</b>	<b>17.9</b>	<b>-28.6</b>	<b>8.6</b>
<i>Ave annual % change (a)</i>							
Sep 2001 to Sep 2006	<b>0.0</b>	<b>-0.7</b>	<b>4.6</b>	<b>-0.9</b>	<b>5.7</b>	<b>10.8</b>	<b>2.1</b>
<b>Bicyclists</b>							
Oct 2005 - Sep 2006	6	3	2	8	12	10	41
Oct 2004 - Sep 2005	10	0	2	8	10	7	37
<b>All road users (c)</b>							
Oct 2005 - Sep 2006	131	223	219	403	356	267	1611
Oct 2004 - Sep 2005	96	205	224	382	350	349	1608
% change	<b>36.5</b>	<b>8.8</b>	<b>-2.2</b>	<b>5.5</b>	<b>1.7</b>	<b>-23.5</b>	<b>0.2</b>
<i>Ave annual % change (a)</i>							
Sep 2001 to Sep 2006	<b>-0.5</b>	<b>-1.7</b>	<b>1.2</b>	<b>-0.8</b>	<b>-1.1</b>	<b>-6.0</b>	<b>-1.5</b>

(a) This represents the average annual exponential change between the annual count of 5-years ago and the current annual count

(b) Includes pillion passengers

(c) Includes road users not separately classified

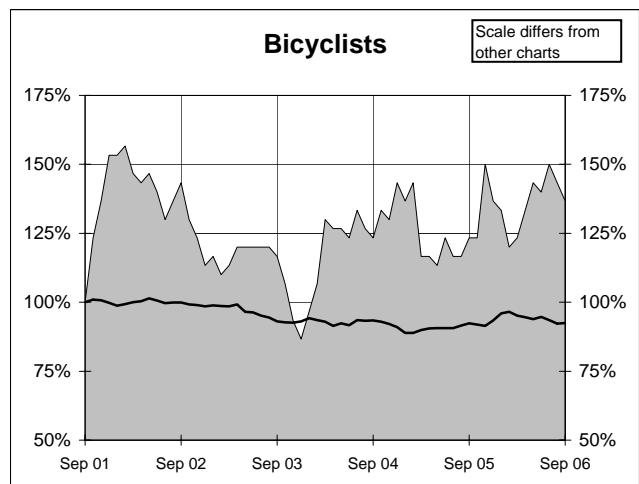
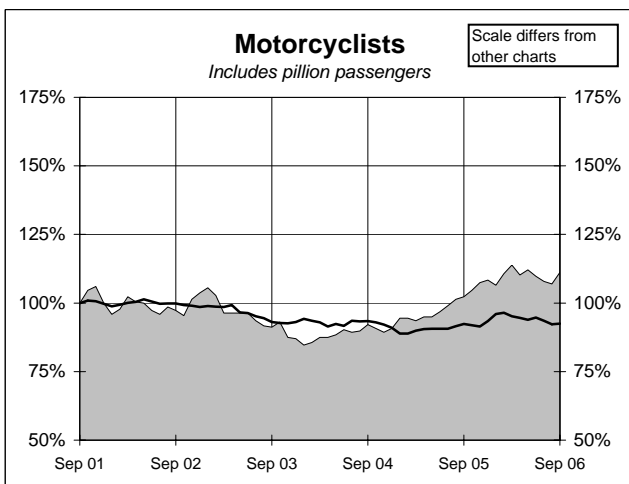
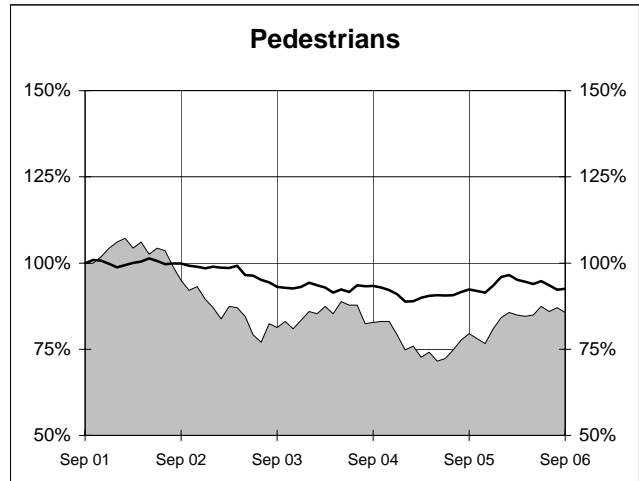
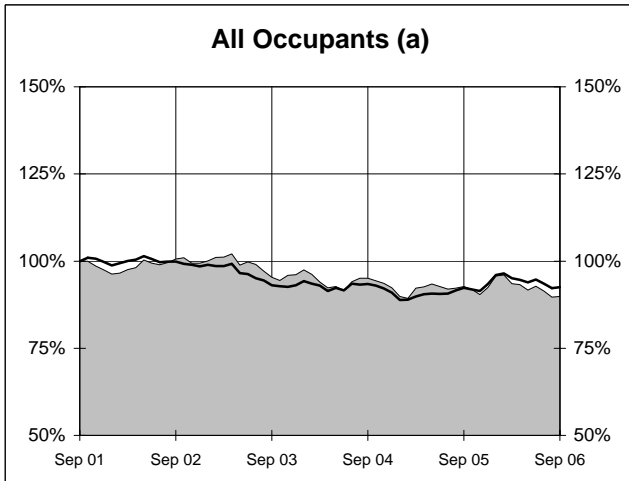
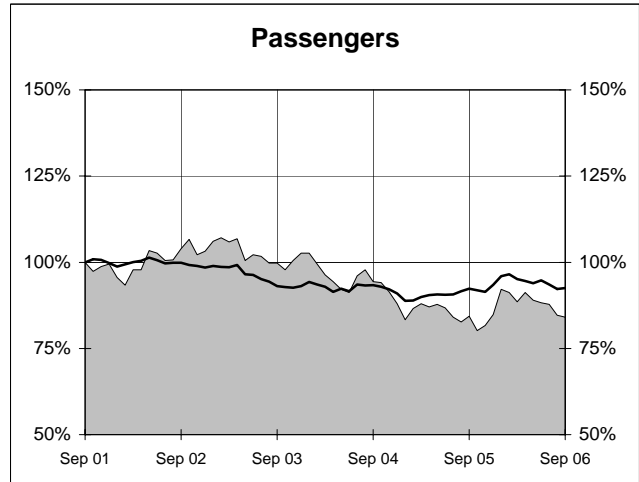
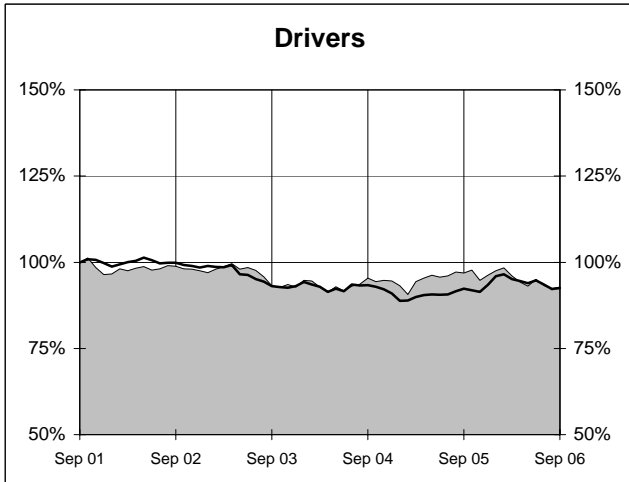
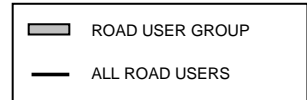
(d) Includes deaths with unstated age

- Percentage change not calculated

# DEATHS IN EACH ROAD USER GROUP - TRENDS

## Annual deaths in each road user group - last 5 years

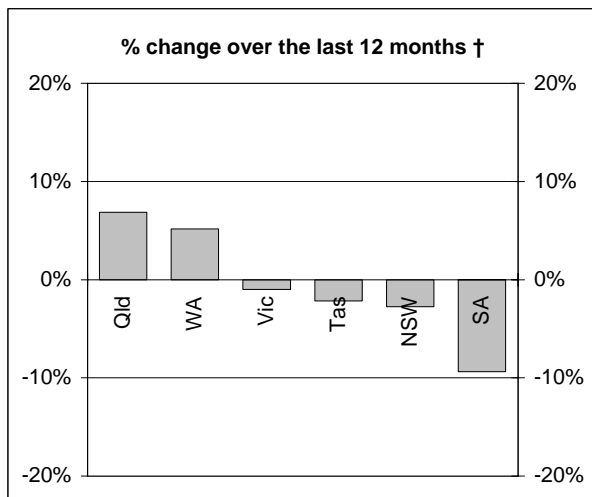
The number shown at each month represents the number of deaths in the preceding 12 months expressed as a percentage of the number of deaths in the 12 months to September 2001.



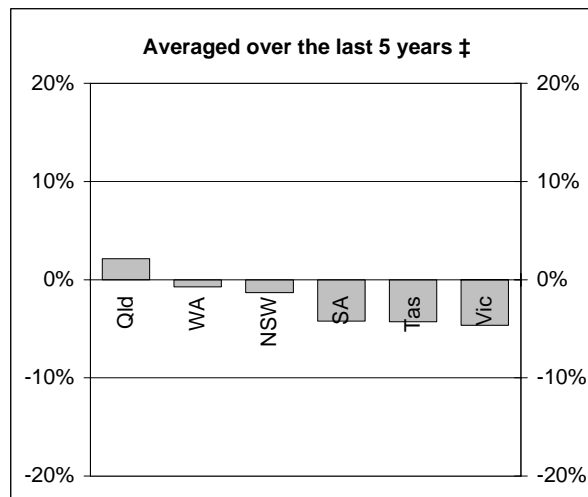
(a) Includes drivers and passengers

# NUMBER OF FATAL ROAD CRASHES

## Percentage change in fatal crashes in each State



† Percentage change between the 12-month periods of Oct 2004 - Sep 2005 and Oct 2005 - Sep 2006



‡ Average annual percentage change over each of the 12-month periods from Oct 2000 - Sep 2001 to Oct 2005 - Sep 2006

## Fatal crashes by State/Territory for month, year to date and twelve months - period ended September 2006 and period ended September 2005

	NSW	Vic	Qld	SA	WA	Tas	NT	ACT	Australia
<b>Current month</b>									
Sep 2006	33	36	28	7	15	3	1	1	124
Sep 2005	39	23	23	8	16	4	8	3	124
% change	-15.4	56.5	21.7	-12.5	-6.3	-25.0	-87.5	-66.7	0.0
<b>Year to date</b>									
Jan 2006 - Sep 2006	354	221	224	86	128	28	28	7	1076
Jan 2005 - Sep 2005	352	233	209	97	116	32	39	20	1098
% change	0.6	-5.2	7.2	-11.3	10.3	-12.5	-28.2	-65.0	-2.0
<b>12 months to date</b>									
Oct 2005 - Sep 2006	461	302	311	116	163	45	40	12	1450
Oct 2004 - Sep 2005	474	305	291	128	155	46	47	22	1468
% change	-2.7	-1.0	6.9	-9.4	5.2	-2.2	-14.9	-45.5	-1.2
<b>Ave annual % change (a)</b>									
Sep 2001 to Sep 2006	-1.3	-4.6	2.1	-4.2	-0.7	-4.3	-1.4	-6.7	-1.8

(a) This represents the average annual exponential change between the annual count of 5 years ago and the current annual count

# FATAL CRASHES INVOLVING TRUCKS AND BUSES

Fatal crashes and deaths involving articulated trucks and buses -  
twelve months ended September 2006 and twelve months ended September 2005

	NSW	Vic	Qld	SA	WA	Tas	NT	ACT	Australia
--	-----	-----	-----	----	----	-----	----	-----	-----------

## FATAL CRASHES INVOLVING ARTICULATED TRUCKS

### Number of crashes

Oct 2005 - Sep 2006	56	N/A	35	11	10	8	4	0	
Oct 2004 - Sep 2005	50	26	21	14	11	3	0	0	

### Number of deaths

Oct 2005 - Sep 2006	69	N/A	44	11	11	10	4	0	
Oct 2004 - Sep 2005	54	29	23	16	13	3	0	0	

Note: Data on heavy rigid trucks not currently available

## FATAL CRASHES INVOLVING BUSES

### Number of crashes

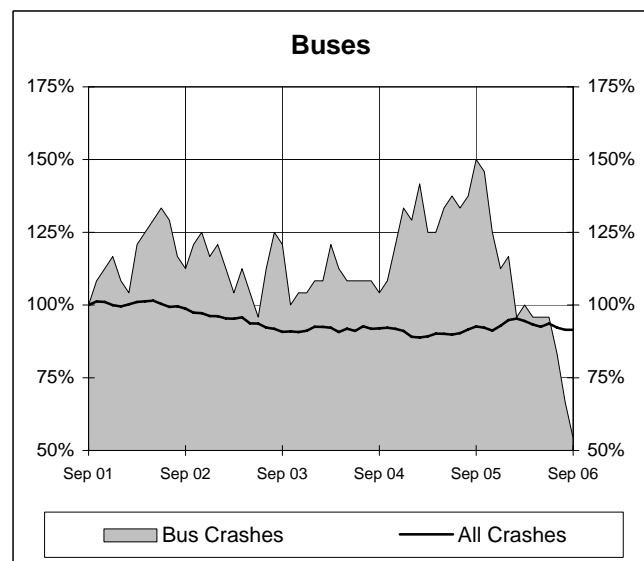
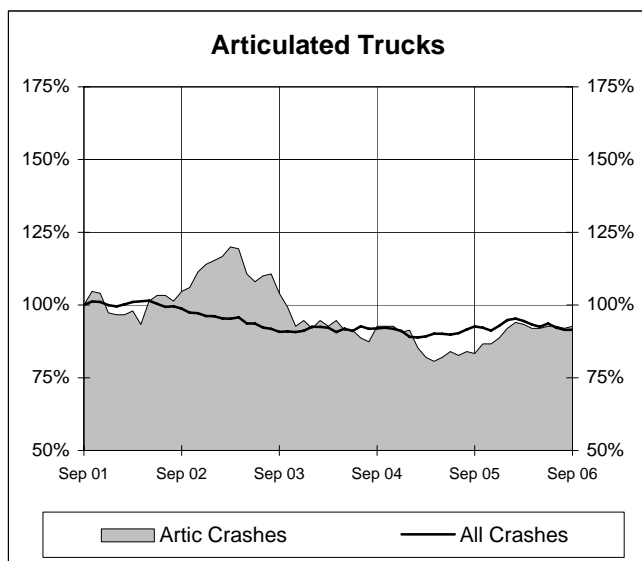
Oct 2005 - Sep 2006	6	2	4	0	0	1	0	0	13
Oct 2004 - Sep 2005	22	5	8	0	1	0	0	0	36
									(-63.9%)

### Number of deaths

Oct 2005 - Sep 2006	6	3	4	0	0	1	0	0	14
Oct 2004 - Sep 2005	28	5	10	0	1	0	0	0	44
									(-68.2%)

## Annual count of fatal crashes involving articulated trucks and buses - last 5 years

The number shown at each month represents the number of fatal crashes in the preceding 12 months expressed as a percentage of the number of fatal crashes in the 12 months to September 2001.





## TIME SERIES - QUARTERLY REPORT

### Road deaths by road user group, 1991 to 2005

	<i>Drivers</i>	<i>Passengers</i>	<i>Pedestrians</i>	<i>Motor cyclists (a)</i>	<i>Bicyclists (b)</i>	<i>All road users (c)</i>
1991	910	554	343	248	58	2113
1992	815	570	350	197	41	1974
1993	859	513	331	203	45	1953
1994	809	501	367	190	59	1928
1995	874	491	398	204	48	2017
1996	869	499	351	193	57	1970
1997	776	431	328	177	52	1767
1998	741	468	318	181	44	1755
1999	820	428	299	176	40	1764
2000	852	450	287	191	31	1817
2001	776	407	290	216	46	1737
2002	785	422	249	224	34	1715
2003	747	420	232	188	26	1621
2004	761	360	220	196	43	1583
2005	775	347	225	234	41	1627

(a) Includes pillion passengers.

(b) From 1989, includes pedal cycle passengers.

(c) Includes road users not separately classified.

### Road deaths by State/Territory, 1991 to 2005

	<i>NSW</i>	<i>Vic</i>	<i>Qld</i>	<i>SA</i>	<i>WA</i>	<i>Tas</i>	<i>NT</i>	<i>ACT</i>	<i>Australia</i>
1991	663	503	395	184	207	77	67	17	2113
1992	649	396	416	165	200	74	54	20	1974
1993	581	435	396	218	209	58	44	12	1953
1994	646	377	418	159	211	59	41	17	1928
1995	620	418	456	181	209	57	61	15	2017
1996	581	417	385	181	247	64	72	23	1970
1997	576	377	360	148	197	32	60	17	1767
1998	556	390	279	168	223	48	69	22	1755
1999	577	383	314	151	218	53	49	19	1764
2000	603	407	317	166	212	43	51	18	1817
2001	524	444	324	153	165	61	50	16	1737
2002	561	397	322	154	179	37	55	10	1715
2003	539	330	310	157	180	41	53	11	1621
2004	510	343	311	139	178	58	35	9	1583
2005	508	346	330	148	163	51	55	26	1627

## DEATH RATES - QUARTERLY REPORT

### Road death rates by State/Territory

	<i>NSW</i>	<i>Vic</i>	<i>Qld</i>	<i>SA</i>	<i>WA</i>	<i>Tas</i>	<i>NT</i>	<i>ACT</i>	<i>Australia</i>
Per capita (a)									
2005	7.50	6.89	8.32	9.60	8.11	10.51	27.12	8.00	8.00
2001	7.97	9.24	8.93	10.12	8.68	12.93	25.28	5.01	8.95
Per vehicle (b)									
2005	1.22	0.95	1.19	1.33	1.07	1.41	5.01	1.18	1.17
2001	1.40	1.34	1.38	1.46	1.20	1.84	4.86	0.79	1.39

(a) Annual deaths per 100,000 population: 2005 at June 30 (preliminary data); 1999 at June 30 (revised data) taken from ABS catalogue 3201.0

(b) Annual deaths per 10,000 registered motor vehicles: 2005 at Mar 31; 1999 at Oct 31 taken from ABS catalogue 9309.0.

## CHARACTERISTICS OF FATAL CRASHES

Proportion (per cent) of fatal crashes by speed limit, crash type, time of day, and time of week - two years ended September 2006 and two years ended September 2001

	<i>Speed limit (km/h) (a)</i>			<i>Time of Day</i>	
	<i>Up to 60</i>	<i>65-95</i>	<i>100+</i>	<i>Day time</i>	<i>Night-time (b)</i>
<i>Oct 2004 - Sep 2006</i>	32.7	22.4	44.9	54.6	45.4
<i>Oct 1999 - Sep 2001</i>	33.2	21.4	45.5	55.8	44.2

	<i>Crash Type</i>			<i>Time of week</i>	
	<i>Pedestrian crash</i>	<i>Other single veh. crash</i>	<i>Other multiple veh. crash</i>	<i>Week day</i>	<i>Week-end (c)</i>
<i>Oct 2004 - Sep 2006</i>	15.4	45.2	39.4	57.6	42.4
<i>Oct 1999 - Sep 2001</i>	18.2	41.1	40.7	60.1	39.9

(a) Excludes ACT

(b) 6:00 pm to 5:59 am

(c) 6:00 pm Friday to 5:59 am Monday