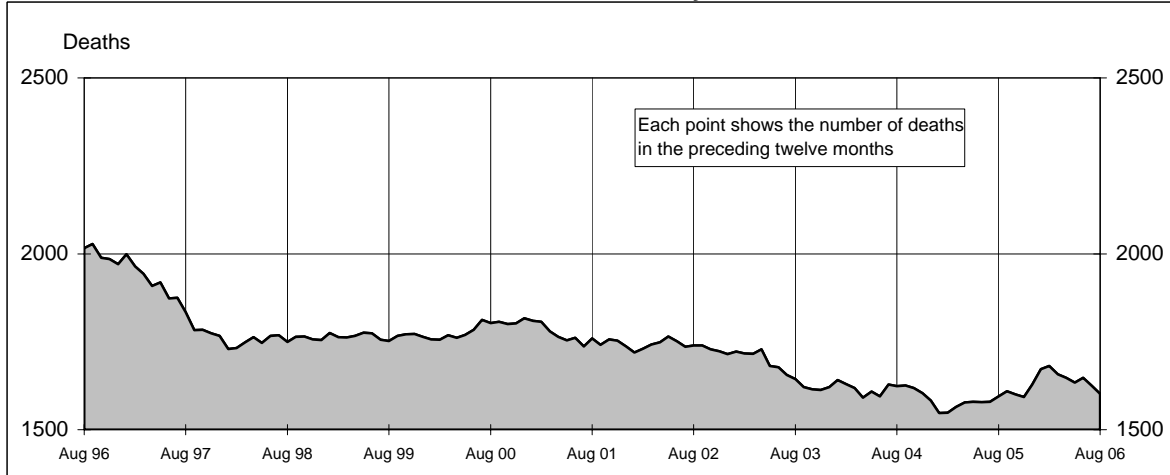
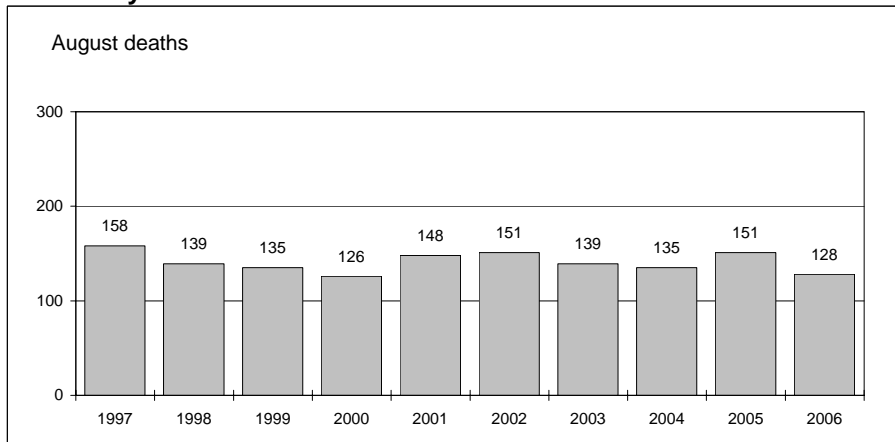




Australian road deaths for 12 months to date - last 10 years



Australian road deaths for August - last 10 years



Inquiries

For further information about data in this bulletin, contact:

The Editor
Transport Safety Statistics Unit
Australian Transport Safety Bureau
PO Box 967,
Civic Square, ACT 2608
Email: stats@atsb.gov.au
Internet: www.atsb.gov.au

Data Sources

The data presented here are obtained from the following sources:

Roads and Traffic Authority, NSW
Vicroads
Queensland Transport
South Australian Police Department
Western Australian Police Service
Department of Infrastructure, Energy and Resources, Tasmania
Northern Territory Police,
Fire & Emergency Services
Department of Urban Services, ACT

Note

Road death statistics for recent months are preliminary and subject to revision. They include any deaths occurring within 30 days of a crash stemming from injuries received in the crash.

© Australian Government

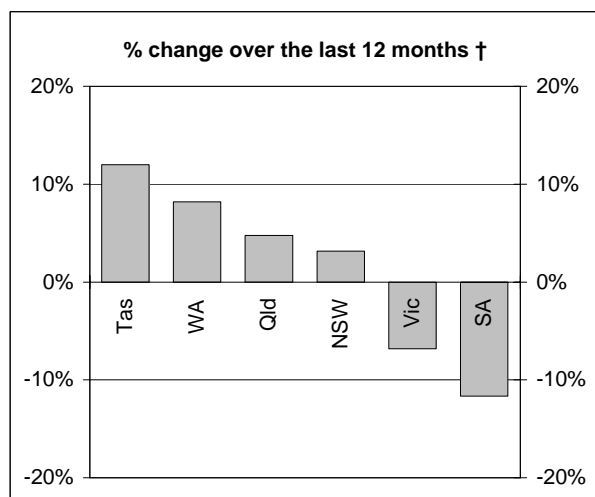
This month's key figures

The total number of road deaths in August 2006 was 128 - this is a 15.2% decrease from the August 2005 figure.

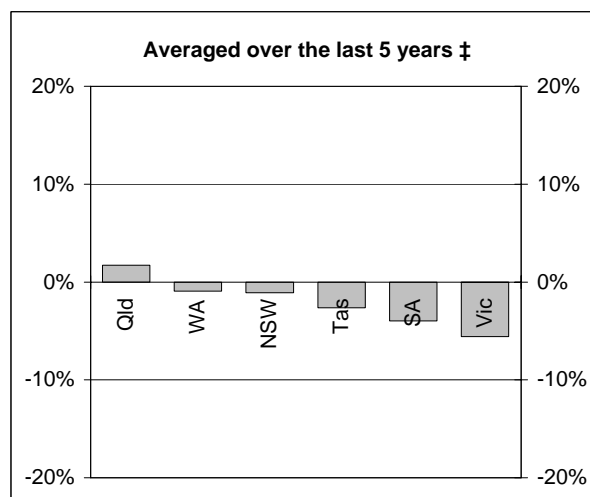
The number of road deaths in 2006 to the end of August is 1,051 - this is a 2.4% decrease from the same 8 month period in 2005.

NUMBER OF ROAD CRASH DEATHS

Percentage change in road deaths in each State



† Percentage change between the 12-month periods of Sep 2004 - Aug 2005 and Sep 2005 - Aug 2006



‡ Average annual percentage change over each of the 12-month periods from Sep 2000 - Aug 2001 to Sep 2005 - Aug 2006

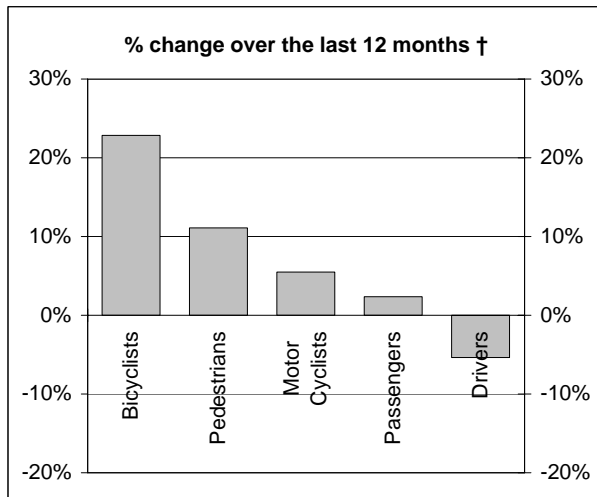
Road deaths by State/Territory for month, year to date, and twelve months - period ended August 2006 and period ended August 2005

	NSW	Vic	Qld	SA	WA	Tas	NT	ACT	Australia
Current month									
Aug 2006	36	21	28	8	19	3	11	2	128
Aug 2005	40	25	42	14	19	3	7	1	151
% change	-10.0	-16.0	-33.3	-42.9	0.0	0.0	57.1	100.0	-15.2
Year to date									
Jan 2006 - Aug 2006	356	203	209	85	130	33	29	6	1051
Jan 2005 - Aug 2005	342	235	208	104	108	28	34	18	1077
% change	4.1	-13.6	0.5	-18.3	20.4	17.9	-14.7	-66.7	-2.4
12-months to date									
Sep 2005 - Aug 2006	523	314	331	129	185	56	50	14	1602
Sep 2004 - Aug 2005	507	337	316	146	171	50	47	21	1595
Difference	16	-23	15	-17	14	6	3	-7	7
% change	3.2	-6.8	4.7	-11.6	8.2	12.0	6.4	-33.3	0.4
Ave annual % change (a)									
Aug 2001 to Aug 2006	-1.1	-5.6	1.7	-4.0	-0.9	-2.6	0.8	-6.9	-1.9

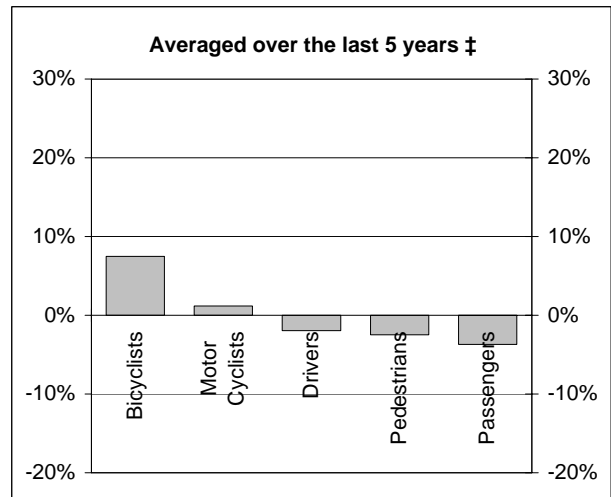
(a) This represents the average annual exponential change between the annual count of 5 years ago and the current annual count

DEATHS IN EACH ROAD USER GROUP

Percentage change in deaths in each road user group



† Percentage change between the 12-month periods of Sep 2004 - Aug 2005 and Sep 2005 - Aug 2006



‡ Average annual percentage change over each of the 12-month periods from Sep 2000 - Aug 2001 to Sep 2005 - Aug 2006

Road deaths by road user group and gender for twelve months ended August 2006 and twelve months ended August 2005

	Drivers	Passengers	Pedestrians	Motor cyclists (a)	Bicyclists	All road users (b)
Males						
Sep 2005 - Aug 2006	573	190	156	221	35	1176
Sep 2004 - Aug 2005	601	181	132	204	30	1151
% change	-4.7	5.0	18.2	8.3	16.7	2.2
Females						
Sep 2005 - Aug 2006	167	154	83	10	8	422
Sep 2004 - Aug 2005	182	157	84	15	5	444
% change	-8.2	-1.9	-1.2	-33.3	60.0	-5.0
Persons (c)						
Sep 2005 - Aug 2006	741	346	240	231	43	1602
Sep 2004 - Aug 2005	783	338	216	219	35	1595
% change	-5.4	2.4	11.1	5.5	22.9	0.4
Ave annual % change (d)						
Aug 2001 to Aug 2006	-2.0	-3.7	-2.5	1.2	7.5	-1.9

(a) Includes pillion passengers

(b) Includes road users not separately specified

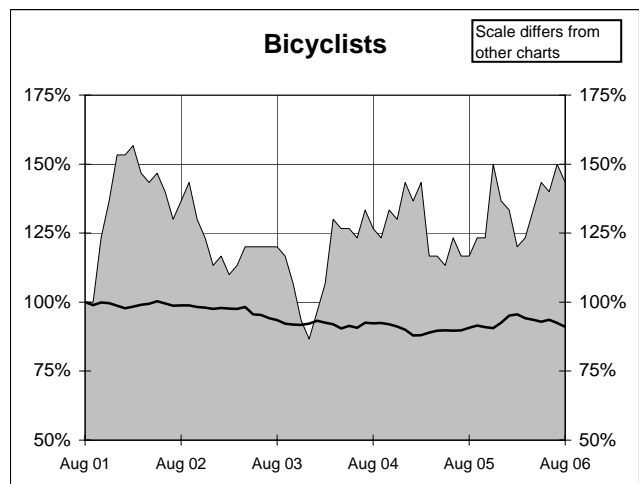
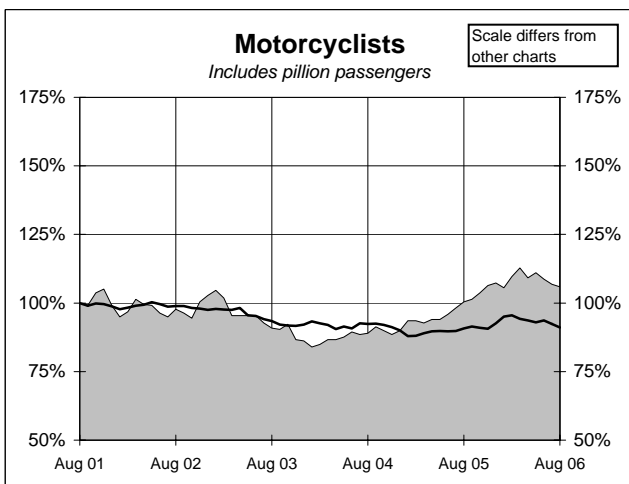
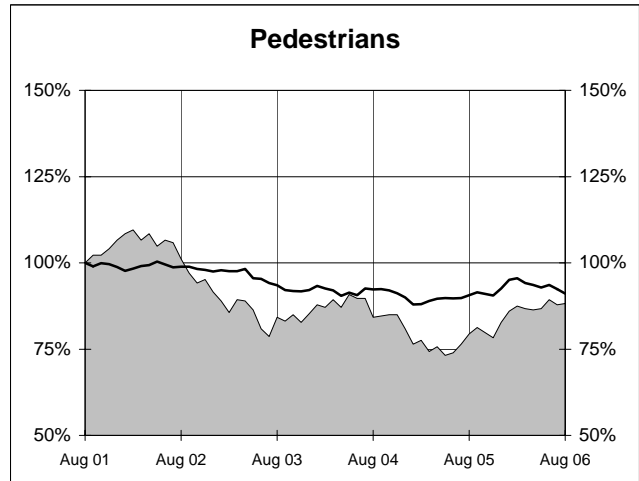
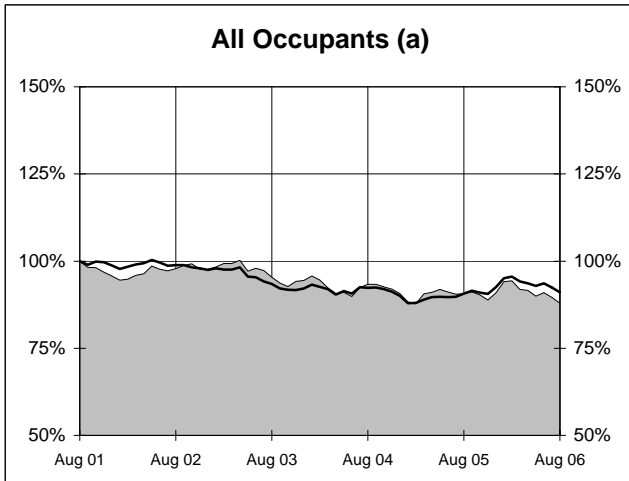
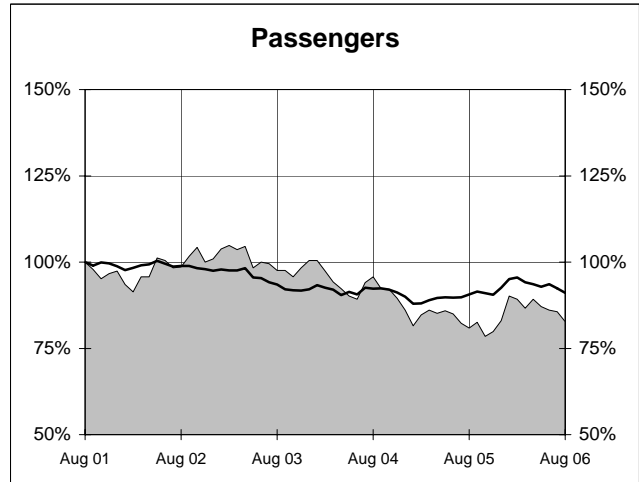
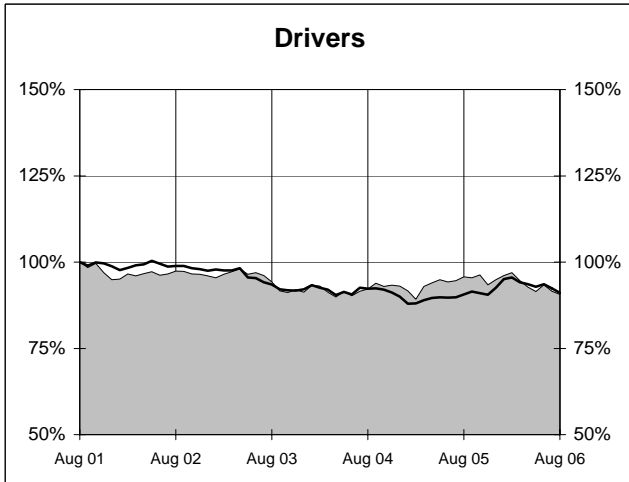
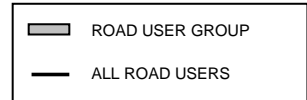
(c) Includes road users with unstated gender

(d) This represents the average annual exponential change between the annual count of 5 years ago and the current annual count

DEATHS IN EACH ROAD USER GROUP - TRENDS

Annual deaths in each road user group - last 5 years

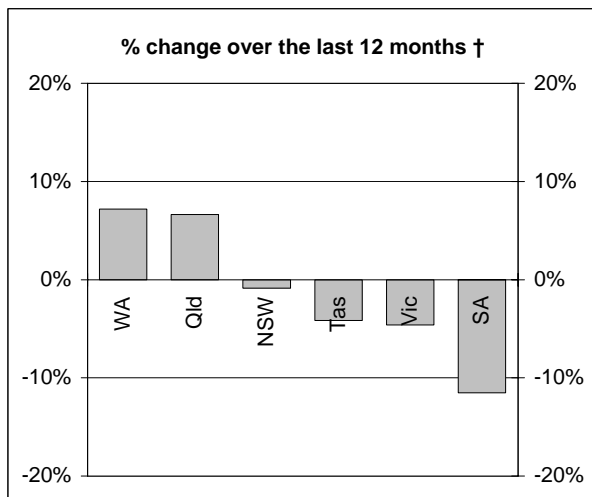
The number shown at each month represents the number of deaths in the preceding 12 months expressed as a percentage of the number of deaths in the 12 months to August 2001.



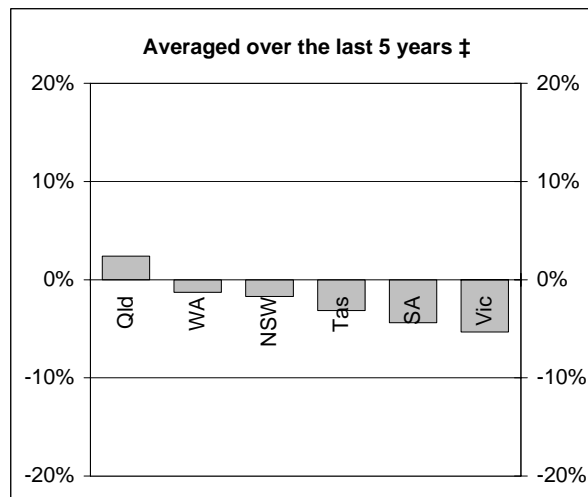
(a) Includes drivers and passengers

NUMBER OF FATAL ROAD CRASHES

Percentage change in fatal crashes in each State



† Percentage change between the 12-month periods of Sep 2004 - Aug 2005 and Sep 2005 - Aug 2006



‡ Average annual percentage change over each of the 12-month periods from Sep 2000 - Aug 2001 to Sep 2005 - Aug 2006

Fatal crashes by State/Territory for month, year to date and twelve months - period ended August 2006 and period ended August 2005

	NSW	Vic	Qld	SA	WA	Tas	NT	ACT	Australia
Current month									
Aug 2006	33	20	27	8	19	3	9	2	121
Aug 2005	36	23	36	11	17	3	7	1	134
% change	-8.3	-13.0	-25.0	-27.3	11.8	0.0	28.6	100.0	-9.7
Year to date									
Jan 2006 - Aug 2006	319	185	196	77	113	25	27	6	948
Jan 2005 - Aug 2005	314	210	186	89	100	28	31	17	975
% change	1.6	-11.9	5.4	-13.5	13.0	-10.7	-12.9	-64.7	-2.8
12 months to date									
Sep 2005 - Aug 2006	465	289	306	115	164	46	47	14	1446
Sep 2004 - Aug 2005	469	303	287	130	153	48	43	20	1453
% change	-0.9	-4.6	6.6	-11.5	7.2	-4.2	9.3	-30.0	-0.5
Ave annual % change (a)									
Aug 2001 to Aug 2006	-1.7	-5.3	2.4	-4.4	-1.3	-3.2	1.3	-5.9	-1.9

(a) This represents the average annual exponential change between the annual count of 5 years ago and the current annual count

FATAL CRASHES INVOLVING TRUCKS AND BUSES

Fatal crashes and deaths involving articulated trucks and buses - twelve months ended August 2006 and twelve months ended August 2005

	NSW	Vic	Qld	SA	WA	Tas	NT	ACT
--	-----	-----	-----	----	----	-----	----	-----

FATAL CRASHES INVOLVING ARTICULATED TRUCKS

Number of crashes

Sep 2005 - Aug 2006	58	N/A	32	10	11	6	4	0
Sep 2004 - Aug 2005	52	25	20	14	11	4	0	0

Number of deaths

Sep 2005 - Aug 2006	71	N/A	39	10	12	6	4	0
Sep 2004 - Aug 2005	56	28	22	16	13	4	0	0

Note: Data on heavy rigid trucks not currently available

FATAL CRASHES INVOLVING BUSES

Number of crashes

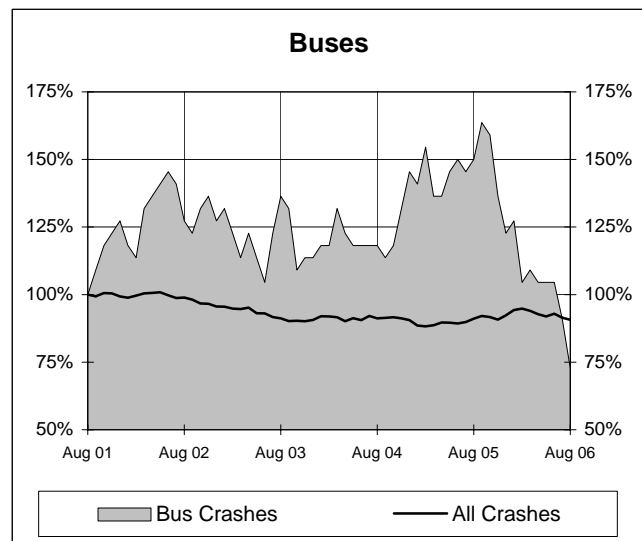
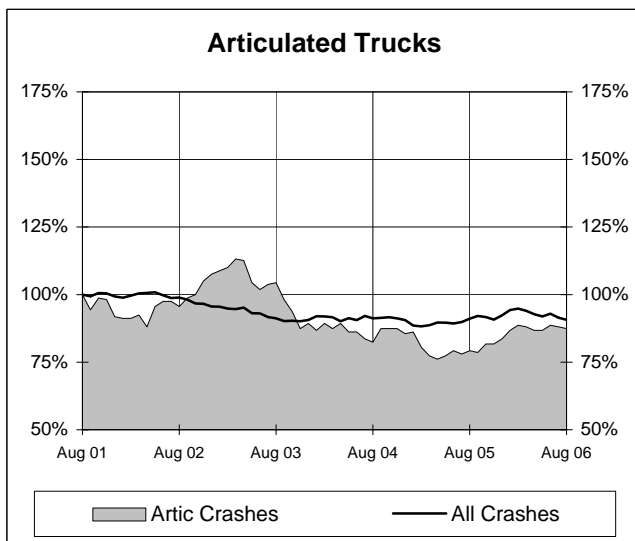
Sep 2005 - Aug 2006	7	3	5	0	0	1	0	0	16
Sep 2004 - Aug 2005	21	4	7	0	1	0	0	0	33
									(-51.5%)

Number of deaths

Sep 2005 - Aug 2006	9	4	7	0	0	1	0	0	21
Sep 2004 - Aug 2005	25	4	7	0	1	0	0	0	37
									(-43.2%)

Annual count of fatal crashes involving articulated trucks and buses - last 5 years

The number shown at each month represents the number of fatal crashes in the preceding 12 months expressed as a percentage of the number of fatal crashes in the 12 months to August 2001.



CHARACTERISTICS OF FATAL CRASHES

Proportion (per cent) of fatal crashes by speed limit, crash type, time of day, and time of week - two years ended August 2006 and two years ended August 2001

	<i>Speed limit (km/h) (a)</i>			<i>Time of Day</i>	
	<i>Up to 60</i>	<i>65-95</i>	<i>100+</i>	<i>Day time</i>	<i>Night-time (b)</i>
<i>Sep 2004 - Aug 2006</i>	32.6	22.3	45.1	54.4	45.6
<i>Sep 1999 - Aug 2001</i>	33.5	21.4	45.1	55.5	44.5

	<i>Crash Type</i>			<i>Time of week</i>	
	<i>Pedestrian crash</i>	<i>Other single veh. crash</i>	<i>Other multiple veh. crash</i>	<i>Week day</i>	<i>Week-end (c)</i>
<i>Sep 2004 - Aug 2006</i>	15.4	45.3	39.3	57.8	42.2
<i>Sep 1999 - Aug 2001</i>	18.0	41.2	40.8	59.9	40.1

(a) Excludes ACT

(b) 6:00 pm to 5:59 am

(c) 6:00 pm Friday to 5:59 am Monday