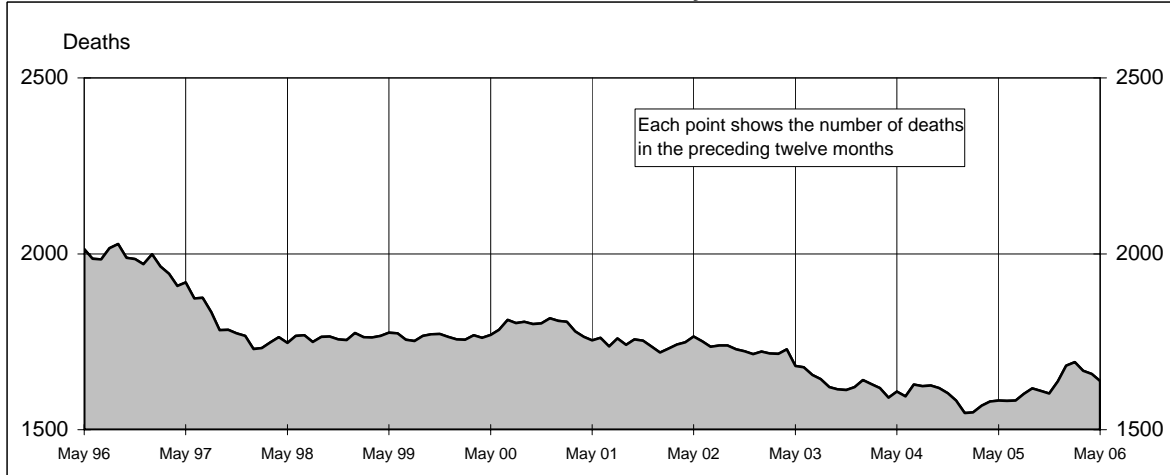
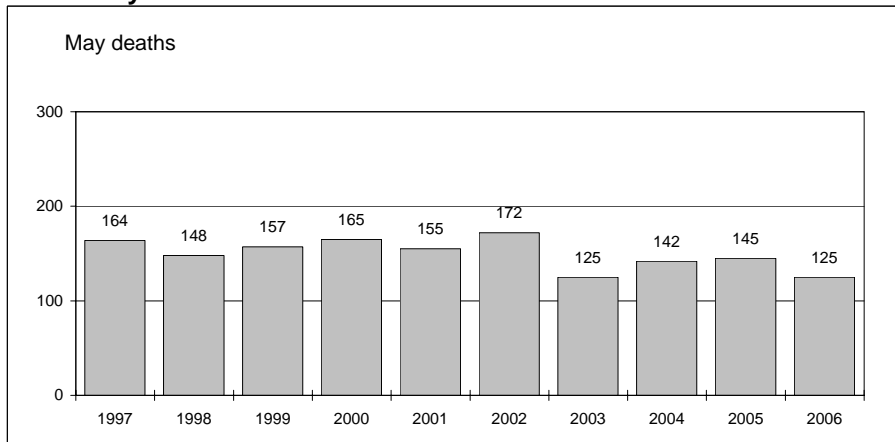




### Australian road deaths for 12 months to date - last 10 years



### Australian road deaths for May - last 10 years



#### Inquiries

For further information about data in this bulletin, contact:

The Editor  
Transport Safety Statistics Unit  
Australian Transport Safety Bureau  
PO Box 967,  
Civic Square, ACT 2608  
Email: [stats@atsb.gov.au](mailto:stats@atsb.gov.au)  
Internet: [www.atsb.gov.au](http://www.atsb.gov.au)

#### Data Sources

The data presented here are obtained from the following sources:

Roads and Traffic Authority, NSW  
Vicroads  
Queensland Transport  
South Australian Police Department  
Western Australian Police Service  
Department of Infrastructure,  
Energy and Resources, Tasmania  
Northern Territory Police,  
Fire & Emergency Services  
Department of Urban Services, ACT

#### Note

Road death statistics for recent months are preliminary and subject to revision. They include any deaths occurring within 30 days of a crash stemming from injuries received in the crash.

© Australian Government

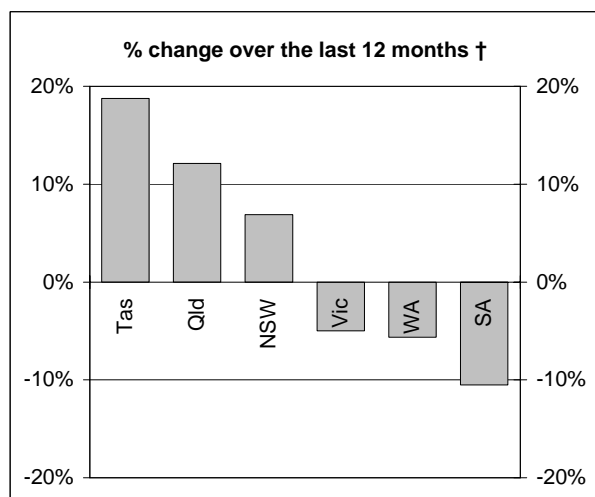
### This month's key figures

The total number of road deaths in May 2006 was 125  
- this is a 13.8% decrease from the May 2005 figure.

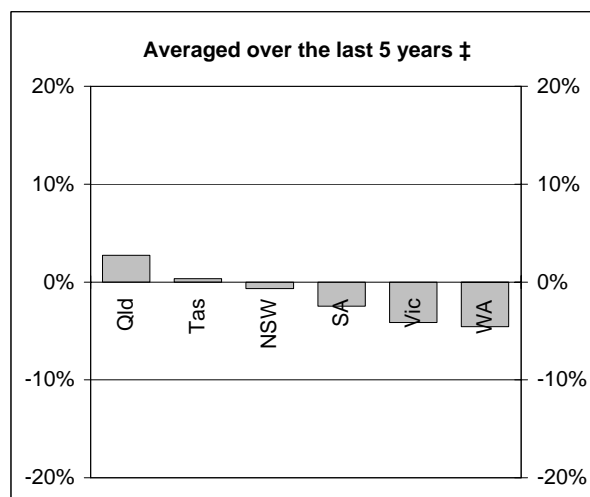
The number of road deaths in 2006 to the end of May is 669  
- this is a 0.1% increase over the same 5 month period in 2005.

# NUMBER OF ROAD CRASH DEATHS

## Percentage change in road deaths in each State



† Percentage change between the 12-month periods of Jun 2004 - May 2005 and Jun 2005 - May 2006



‡ Average annual percentage change over each of the 12-month periods from Jun 2000 - May 2001 to Jun 2005 - May 2006

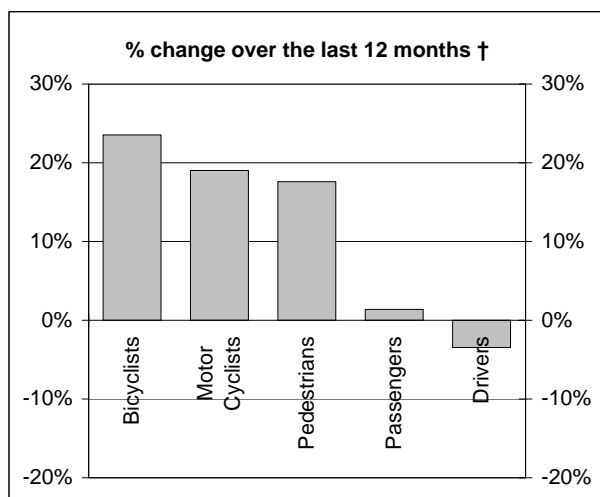
## Road deaths by State/Territory for month, year to date, and twelve months - period ended May 2006 and period ended May 2005

	NSW	Vic	Qld	SA	WA	Tas	NT	ACT	Australia
<b>Current month</b>									
May 2006	37	26	27	11	14	8	1	1	125
May 2005	57	29	21	14	12	8	1	3	145
% change	-35.1	-10.3	28.6	-21.4	16.7	0.0	0.0	-66.7	-13.8
<b>Year to date</b>									
Jan 2006 - May 2006	241	134	127	54	76	23	11	3	669
Jan 2005 - May 2005	215	158	115	66	72	16	15	11	668
% change	12.1	-15.2	10.4	-18.2	5.6	43.8	-26.7	-72.7	0.1
<b>12-months to date</b>									
Jun 2005 - May 2006	543	324	342	136	167	57	51	18	1638
Jun 2004 - May 2005	508	341	305	152	177	48	36	16	1583
Difference	35	-17	37	-16	-10	9	15	2	55
% change	6.9	-5.0	12.1	-10.5	-5.6	18.8	41.7	12.5	3.5
<b>Ave annual % change (a)</b>									
May 2001 to May 2006	-0.7	-4.1	2.7	-2.5	-4.6	0.4	-0.4	-2.1	-1.4

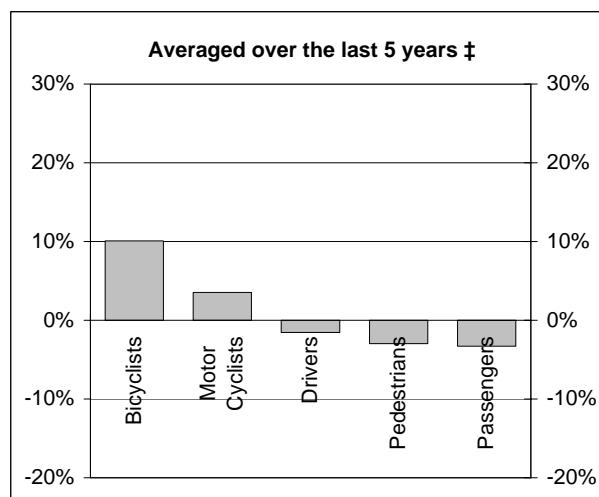
(a) This represents the average annual exponential change between the annual count of 5 years ago and the current annual count

# DEATHS IN EACH ROAD USER GROUP

## Percentage change in deaths in each road user group



† Percentage change between the 12-month periods of Jun 2004 - May 2005 and Jun 2005 - May 2006



‡ Average annual percentage change over each of the 12-month periods from Jun 2000 - May 2001 to Jun 2005 - May 2006

## Road deaths by road user group and gender for twelve months ended May 2006 and twelve months ended May 2005

	Drivers	Passengers	Pedestrians	Motor cyclists (a)	Bicyclists	All road users (b)
<b>Males</b>						
Jun 2005 - May 2006	576	193	146	234	33	1183
Jun 2004 - May 2005	608	192	123	190	31	1149
% change	-5.3	0.5	18.7	23.2	6.5	3.0
<b>Females</b>						
Jun 2005 - May 2006	176	169	88	10	9	452
Jun 2004 - May 2005	172	167	76	15	3	434
% change	2.3	1.2	15.8	-33.3	200.0	4.1
<b>Persons (c)</b>						
Jun 2005 - May 2006	753	364	234	244	42	1638
Jun 2004 - May 2005	780	359	199	205	34	1583
% change	-3.5	1.4	17.6	19.0	23.5	3.5
<b>Ave annual % change (d)</b>						
May 2001 to May 2006	-1.5	-3.3	-3.0	3.5	10.1	-1.4

(a) Includes pillion passengers

(b) Includes road users not separately specified

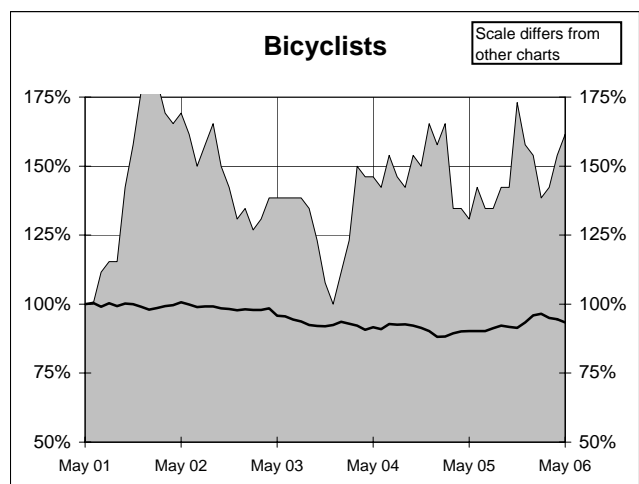
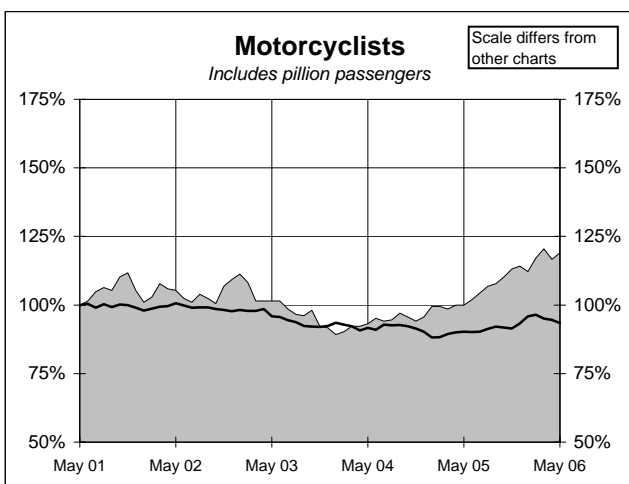
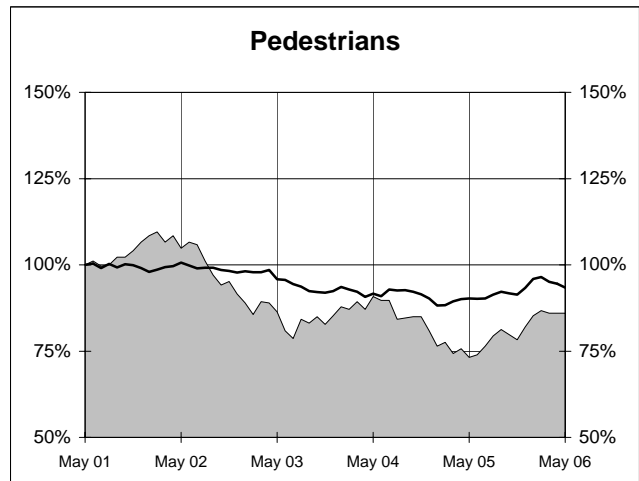
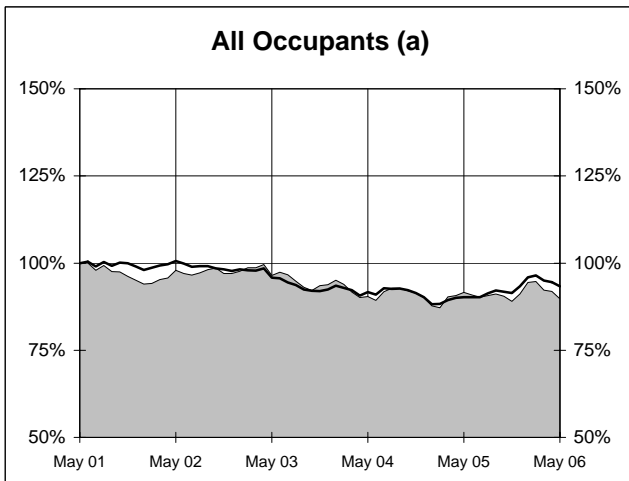
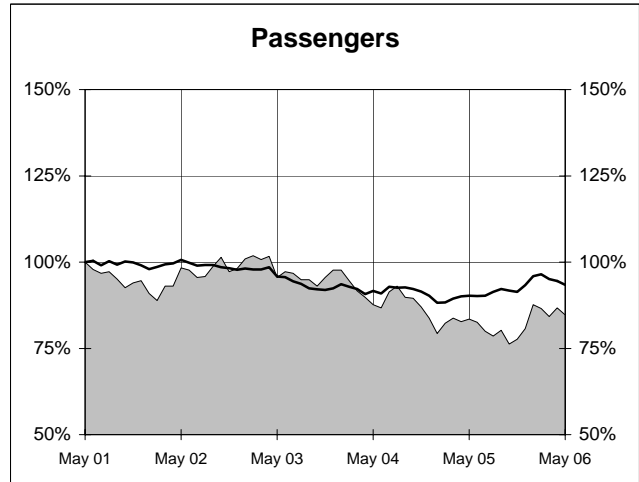
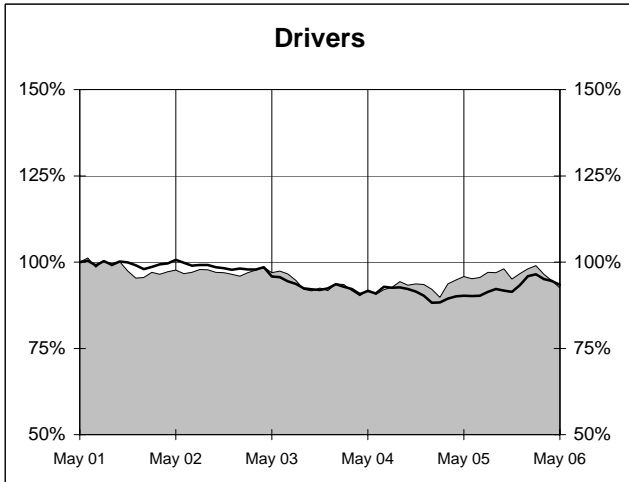
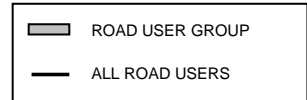
(c) Includes road users with unstated gender

(d) This represents the average annual exponential change between the annual count of 5 years ago and the current annual count

# DEATHS IN EACH ROAD USER GROUP - TRENDS

## Annual deaths in each road user group - last 5 years

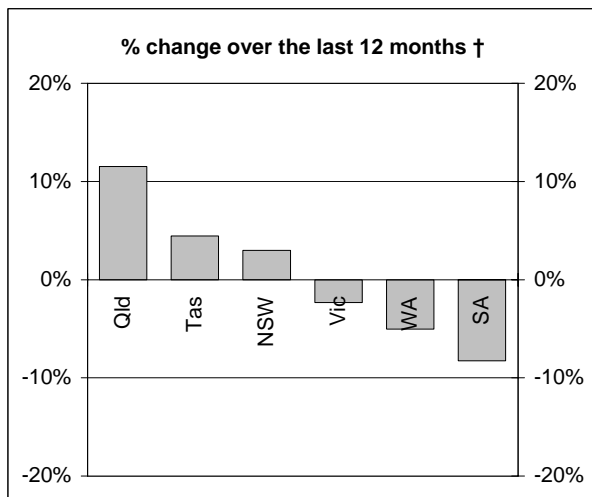
The number shown at each month represents the number of deaths in the preceding 12 months expressed as a percentage of the number of deaths in the 12 months to May 2001.



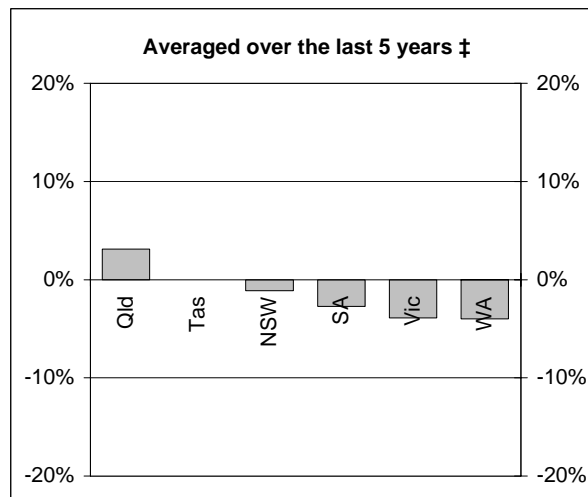
(a) Includes drivers and passengers

# NUMBER OF FATAL ROAD CRASHES

## Percentage change in fatal crashes in each State



† Percentage change between the 12-month periods of Jun 2004 - May 2005 and Jun 2005 - May 2006



‡ Average annual percentage change over each of the 12-month periods from Jun 2000 - May 2001 to Jun 2005 - May 2006

## Fatal crashes by State/Territory for month, year to date and twelve months - period ended May 2006 and period ended May 2005

	NSW	Vic	Qld	SA	WA	Tas	NT	ACT	Australia
<b>Current month</b>									
May 2006	36	24	25	11	13	5	1	1	116
May 2005	53	27	19	12	11	8	1	3	134
% change	-32.1	-11.1	31.6	-8.3	18.2	-37.5	0.0	-66.7	-13.4
<b>Year to date</b>									
Jan 2006 - May 2006	214	121	118	50	66	15	11	3	598
Jan 2005 - May 2005	201	142	104	55	66	16	13	11	608
% change	6.5	-14.8	13.5	-9.1	0.0	-6.3	-15.4	-72.7	-1.6
<b>12 months to date</b>									
Jun 2005 - May 2006	481	295	310	122	151	47	49	17	1472
Jun 2004 - May 2005	467	302	278	133	159	45	33	16	1433
% change	3.0	-2.3	11.5	-8.3	-5.0	4.4	48.5	6.3	2.7
<b>Ave annual % change (a)</b>									
May 2001 to May 2006	-1.1	-3.9	3.1	-2.7	-4.0	0.0	1.3	-2.2	-1.3

(a) This represents the average annual exponential change between the annual count of 5 years ago and the current annual count

# FATAL CRASHES INVOLVING TRUCKS AND BUSES

Fatal crashes and deaths involving articulated trucks and buses - twelve months ended May 2006 and twelve months ended May 2005

	NSW	Vic	Qld	SA	WA	Tas	NT	ACT	Australia
--	-----	-----	-----	----	----	-----	----	-----	-----------

## FATAL CRASHES INVOLVING ARTICULATED TRUCKS

### Number of crashes

Jun 2005 - May 2006	54	18	28	16	6	6	2	0	130
Jun 2004 - May 2005	53	25	16	11	13	4	1	0	123
									(+5.7%)

### Number of deaths

Jun 2005 - May 2006	67	20	35	16	6	6	2	0	152
Jun 2004 - May 2005	58	28	17	15	15	4	1	0	138
									(+10.1%)

Note: Data on heavy rigid trucks not currently available

## FATAL CRASHES INVOLVING BUSES

### Number of crashes

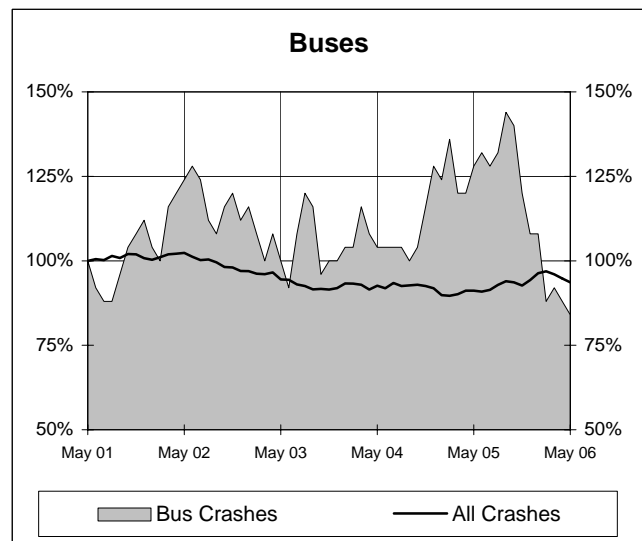
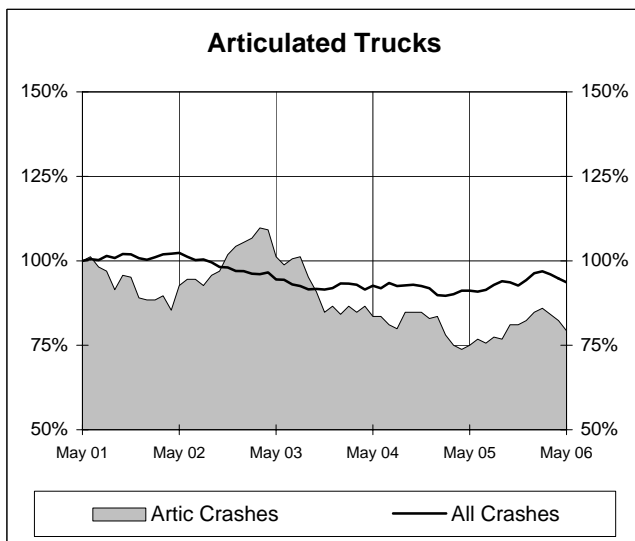
Jun 2005 - May 2006	10	3	7	0	0	1	0	0	21
Jun 2004 - May 2005	20	4	4	3	1	0	0	0	32
									(-34.4%)

### Number of deaths

Jun 2005 - May 2006	15	4	9	0	0	1	0	0	29
Jun 2004 - May 2005	21	4	4	3	1	0	0	0	33
									(-12.1%)

## Annual count of fatal crashes involving articulated trucks and buses - last 5 years

The number shown at each month represents the number of fatal crashes in the preceding 12 months expressed as a percentage of the number of fatal crashes in the 12 months to May 2001.



## CHARACTERISTICS OF FATAL CRASHES

Proportion (per cent) of fatal crashes by speed limit, crash type, time of day, and time of week - two years ended May 2006 and two years ended May 2001

	<i>Speed limit (km/h) (a)</i>			<i>Time of Day</i>	
	<i>Up to 60</i>	<i>65-95</i>	<i>100+</i>	<i>Day time</i>	<i>Night-time (b)</i>
<i>Jun 2004 - May 2006</i>	33.0	22.2	44.9	54.5	45.5
<i>Jun 1999 - May 2001</i>	33.1	21.7	45.3	55.5	44.5

	<i>Crash Type</i>			<i>Time of week</i>	
	<i>Pedestrian crash</i>	<i>Other single veh. crash</i>	<i>Other multiple veh. crash</i>	<i>Week day</i>	<i>Week-end (c)</i>
<i>Jun 2004 - May 2006</i>	14.6	45.5	39.9	57.9	42.1
<i>Jun 1999 - May 2001</i>	18.1	40.5	41.3	60.3	39.7

(a) Excludes ACT

(b) 6:00 pm to 5:59 am

(c) 6:00 pm Friday to 5:59 am Monday