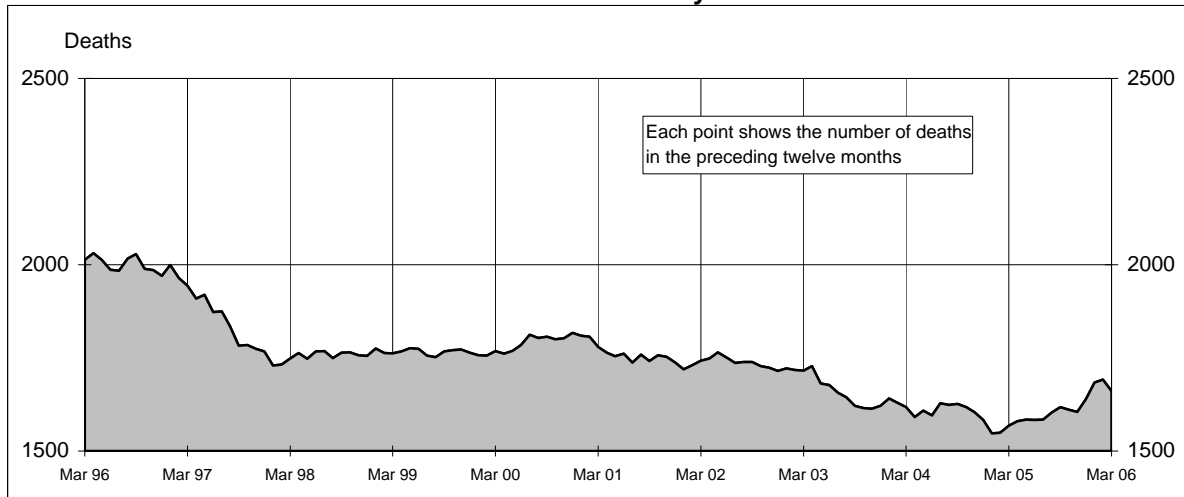
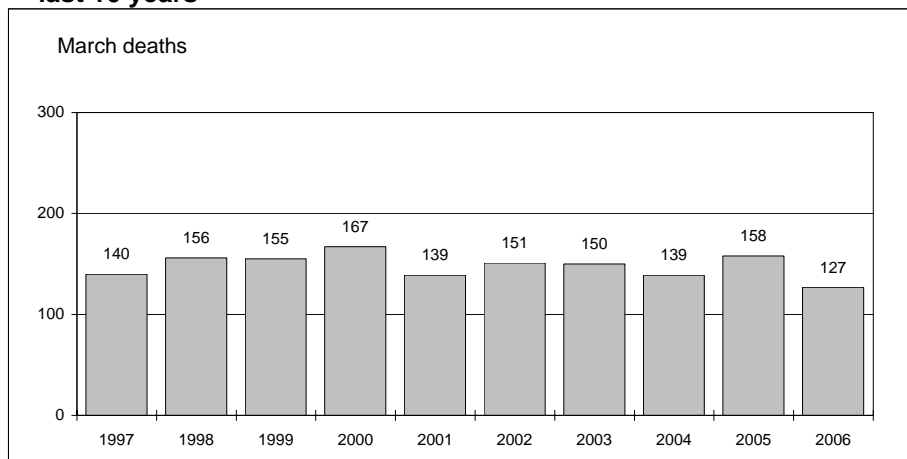




Australian road deaths for 12 months to date - last 10 years



Australian road deaths for March - last 10 years



Inquiries

For further information about data in this bulletin, contact:

The Editor
Transport Safety Statistics Unit
Australian Transport Safety Bureau
PO Box 967,
Civic Square, ACT 2608
Email: stats@atsb.gov.au
Internet: www.atsb.gov.au

Data Sources

The data presented here are obtained from the following sources:

Roads and Traffic Authority, NSW
Vicroads
Queensland Transport
South Australian Police Department
Western Australian Police Service
Department of Infrastructure,
Energy and Resources, Tasmania
Northern Territory Police,
Fire & Emergency Services
Department of Urban Services, ACT

Note

Road death statistics for recent months are preliminary and subject to revision. They include any deaths occurring within 30 days of a crash stemming from injuries received in the crash.

© Australian Government

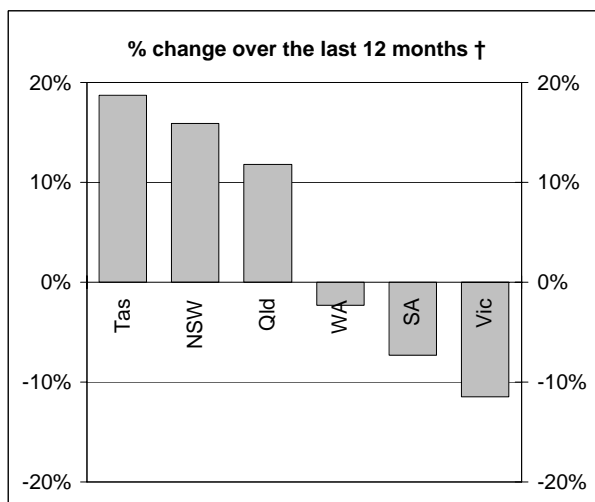
This month's key figures

The total number of road deaths in March 2006 was 127
- this is a 19.6% decrease from the March 2005 figure.

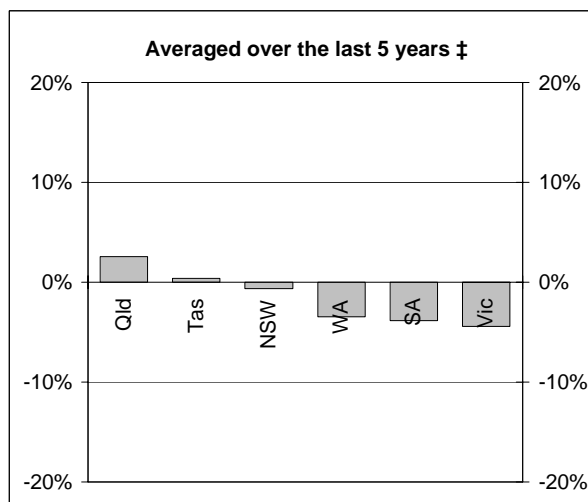
The number of road deaths in 2006 to the end of March is 410
- this is a 5.7% increase over the same 3 month period in 2005.

NUMBER OF ROAD CRASH DEATHS

Percentage change in road deaths in each State



† Percentage change between the 12-month periods of Apr 2004 - Mar 2005 and Apr 2005 - Mar 2006



‡ Average annual percentage change over each of the 12-month periods from Apr 2000 - Mar 2001 to Apr 2005 - Mar 2006

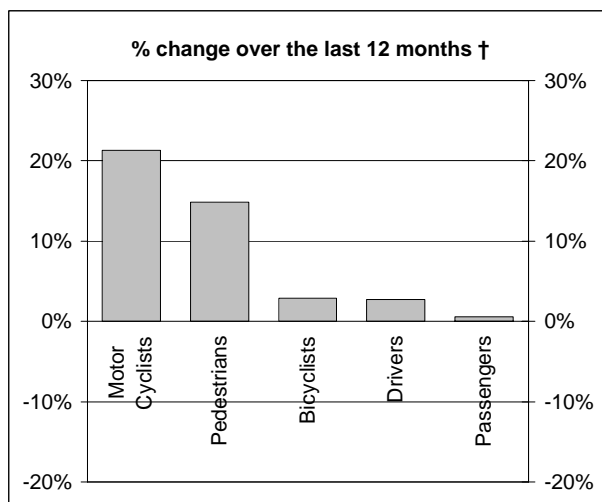
Road deaths by State/Territory for month, year to date, and twelve months - period ended March 2006 and period ended March 2005

	NSW	Vic	Qld	SA	WA	Tas	NT	ACT	Australia
Current month									
Mar 2006	50	23	25	12	12	3	2	0	127
Mar 2005	38	48	24	27	14	2	4	1	158
% change	31.6	-52.1	4.2	-55.6	-14.3	50.0	-50.0	-100.0	-19.6
Year to date									
Jan 2006 - Mar 2006	146	85	74	33	50	15	5	2	410
Jan 2005 - Mar 2005	112	108	62	42	42	8	10	4	388
% change	30.4	-21.3	19.4	-21.4	19.0	87.5	-50.0	-50.0	5.7
12-months to date									
Apr 2005 - Mar 2006	554	325	341	139	171	57	50	24	1661
Apr 2004 - Mar 2005	478	367	305	150	175	48	35	10	1568
Difference	76	-42	36	-11	-4	9	15	14	93
% change	15.9	-11.4	11.8	-7.3	-2.3	18.8	42.9	140.0	5.9
Ave annual % change (a)									
Mar 2001 to Mar 2006	-0.6	-4.4	2.6	-3.8	-3.5	0.4	-0.4	4.8	-1.4

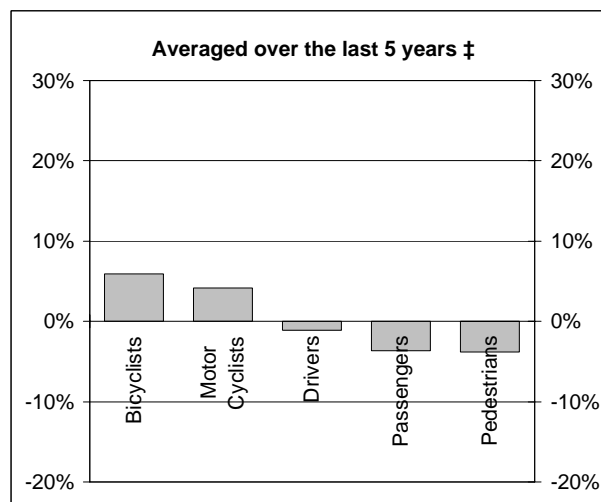
(a) This represents the average annual exponential change between the annual count of 5 years ago and the current annual count

DEATHS IN EACH ROAD USER GROUP

Percentage change in deaths in each road user group



† Percentage change between the 12-month periods of Apr 2004 - Mar 2005 and Apr 2005 - Mar 2006



‡ Average annual percentage change over each of the 12-month periods from Apr 2000 - Mar 2001 to Apr 2005 - Mar 2006

Road deaths by road user group and gender for twelve months ended March 2006 and twelve months ended March 2005

	Drivers	Passengers	Pedestrians	Motor cyclists (a)	Bicyclists	All road users (b)
Males						
Apr 2005 - Mar 2006	601	180	144	233	29	1189
Apr 2004 - Mar 2005	584	190	132	187	32	1129
% change	2.9	-5.3	9.1	24.6	-9.4	5.3
Females						
Apr 2005 - Mar 2006	183	180	88	12	7	470
Apr 2004 - Mar 2005	179	170	70	15	3	439
% change	2.2	5.9	25.7	-20.0	133.3	7.1
Persons (c)						
Apr 2005 - Mar 2006	784	362	232	245	36	1661
Apr 2004 - Mar 2005	763	360	202	202	35	1568
% change	2.8	0.6	14.9	21.3	2.9	5.9
Ave annual % change (d)						
Mar 2001 to Mar 2006	-1.1	-3.7	-3.8	4.1	5.9	-1.4

(a) Includes pillion passengers

(b) Includes road users not separately specified

(c) Includes road users with unstated gender

(d) This represents the average annual exponential change between the annual count of 5 years ago and the current annual count

DEATHS IN EACH ROAD USER GROUP - QUARTERLY REPORT

Road deaths by road user group and State/Territory for twelve months ended March 2006 and twelve months ended March 2005

	NSW	Vic	Qld	SA	WA	Tas	NT	ACT	Australia
Drivers									
Apr 2005 - Mar 2006	259	146	163	73	86	29	20	8	784
Apr 2004 - Mar 2005	231	184	140	81	83	23	17	4	763
% change	12.1	-20.7	16.4	-9.9	3.6	26.1	17.6	-	2.8
<i>Ave annual % change (a)</i>									
Mar 2001 to Mar 2006	-0.2	-5.6	1.0	-4.9	1.5	4.7	9.0	-	-1.1
Passengers									
Apr 2005 - Mar 2006	115	65	73	34	40	16	15	4	362
Apr 2004 - Mar 2005	101	90	70	32	44	13	10	0	360
% change	13.9	-27.8	4.3	6.3	-9.1	23.1	50.0	-	0.6
<i>Ave annual % change (a)</i>									
Mar 2001 to Mar 2006	-3.4	-6.9	-0.5	-0.6	-8.1	-2.3	2.9	-	-3.7
Pedestrians									
Apr 2005 - Mar 2006	98	54	38	9	19	1	9	4	232
Apr 2004 - Mar 2005	78	47	31	12	23	4	5	2	202
% change	25.6	14.9	22.6	-25.0	-17.4	-75.0	80.0	-	14.9
<i>Ave annual % change (a)</i>									
Mar 2001 to Mar 2006	-0.8	-2.4	0.0	-18.5	-7.5	-35.6	-7.1	-	-3.8
Motor cyclists (b)									
Apr 2005 - Mar 2006	71	55	63	16	22	7	3	8	245
Apr 2004 - Mar 2005	58	39	55	20	20	7	0	3	202
% change	22.4	41.0	14.5	-20.0	10.0	0.0	-	-	21.3
<i>Ave annual % change (a)</i>									
Mar 2001 to Mar 2006	2.1	2.3	17.6	4.2	-7.8	7.0	-12.9	-	4.1
Bicyclists									
Apr 2005 - Mar 2006	11	5	4	5	4	4	3	0	36
Apr 2004 - Mar 2005	10	7	7	3	5	1	1	1	35
All road users (c)									
Apr 2005 - Mar 2006	554	325	341	139	171	57	50	24	1661
Apr 2004 - Mar 2005	478	367	305	150	175	48	35	10	1568
% change	15.9	-11.4	11.8	-7.3	-2.3	18.8	42.9	140.0	5.9
<i>Ave annual % change (a)</i>									
Mar 2001 to Mar 2006	-0.6	-4.4	2.6	-3.8	-3.5	0.4	-0.4	4.8	-1.4

(a) This represents the average annual exponential change between the annual count of 5-years ago and the current annual count

(b) Includes pillion passengers

(c) Includes road users not separately classified

DEATHS IN EACH ROAD USER GROUP - QUARTERLY REPORT

Road deaths by road user group and age for twelve months ended
March 2006 and twelve months ended March 2005

	0-16 years	17-20 years	21-25 years	26-39 years	40-59 years	60+ years	All fatalities(d)
Drivers							
Apr 2005 - Mar 2006	5	88	127	230	181	149	784
Apr 2004 - Mar 2005	6	121	93	179	201	163	763
% change	-16.7	-27.3	36.6	28.5	-10.0	-8.6	2.8
<i>Ave annual % change (a)</i>							
Mar 2001 to Mar 2006	-11.1	-6.0	5.3	-0.8	-3.0	-0.3	-1.1
Passengers							
Apr 2005 - Mar 2006	84	60	45	43	61	63	362
Apr 2004 - Mar 2005	62	78	46	47	57	69	360
% change	35.5	-23.1	-2.2	-8.5	7.0	-8.7	0.6
<i>Ave annual % change (a)</i>							
Mar 2001 to Mar 2006	0.5	-5.6	-3.6	-6.8	2.1	-9.5	-3.7
Pedestrians							
Apr 2005 - Mar 2006	28	18	15	45	36	86	232
Apr 2004 - Mar 2005	20	14	17	41	40	70	202
% change	40.0	28.6	-11.8	9.8	-10.0	22.9	14.9
<i>Ave annual % change (a)</i>							
Mar 2001 to Mar 2006	-9.5	-7.8	0.0	-2.1	-5.6	-2.2	-3.8
Motor cyclists (b)							
Apr 2005 - Mar 2006	5	20	58	88	57	17	245
Apr 2004 - Mar 2005	7	26	33	79	50	7	202
% change	-28.6	-23.1	75.8	11.4	14.0	142.9	21.3
<i>Ave annual % change (a)</i>							
Mar 2001 to Mar 2006	10.8	-3.6	4.7	1.9	7.3	19.4	4.1
Bicyclists							
Apr 2005 - Mar 2006	8	3	1	5	11	8	36
Apr 2004 - Mar 2005	8	1	1	11	8	6	35
All road users (c)							
Apr 2005 - Mar 2006	130	189	246	412	347	323	1661
Apr 2004 - Mar 2005	103	240	192	358	359	315	1568
% change	26.2	-21.3	28.1	15.1	-3.3	2.5	5.9
<i>Ave annual % change (a)</i>							
Mar 2001 to Mar 2006	-2.4	-6.0	2.3	-1.0	-0.8	-2.2	-1.4

(a) This represents the average annual exponential change between the annual count of 5-years ago and the current annual count

(b) Includes pillion passengers

(c) Includes road users not separately classified

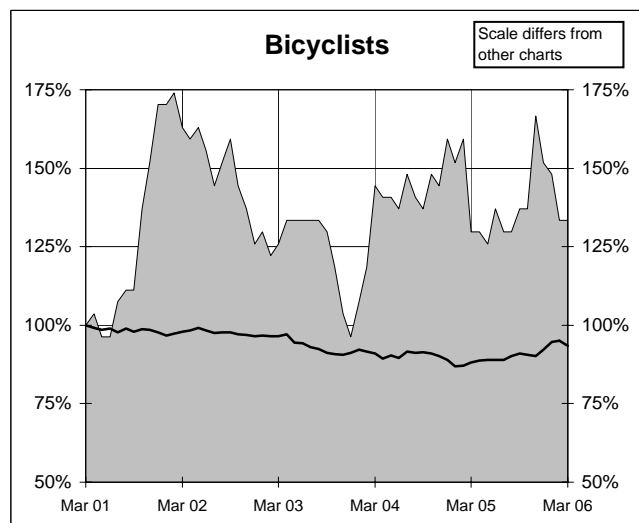
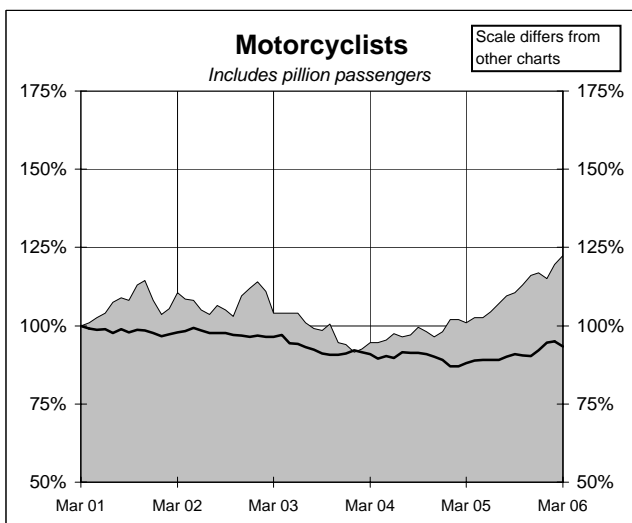
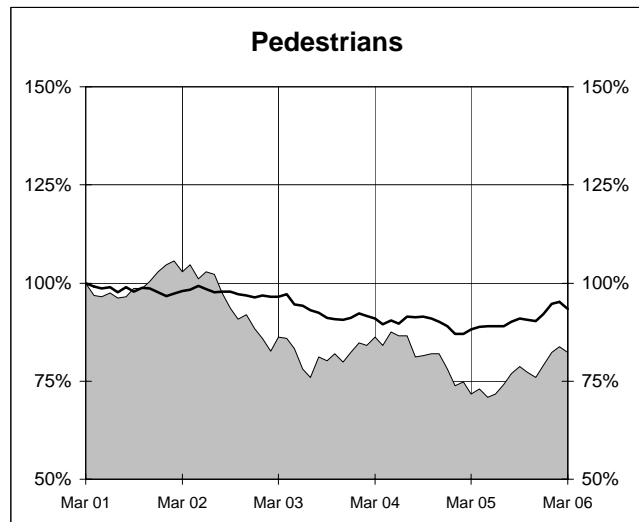
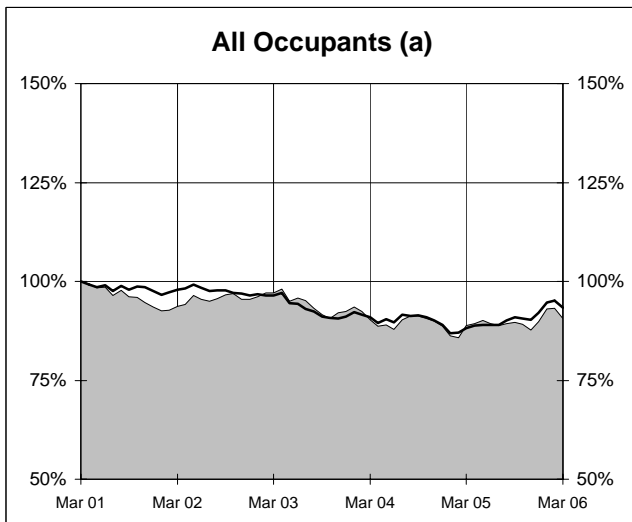
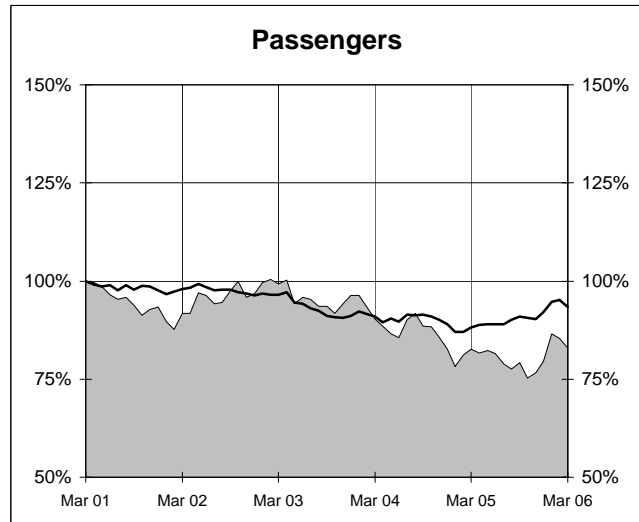
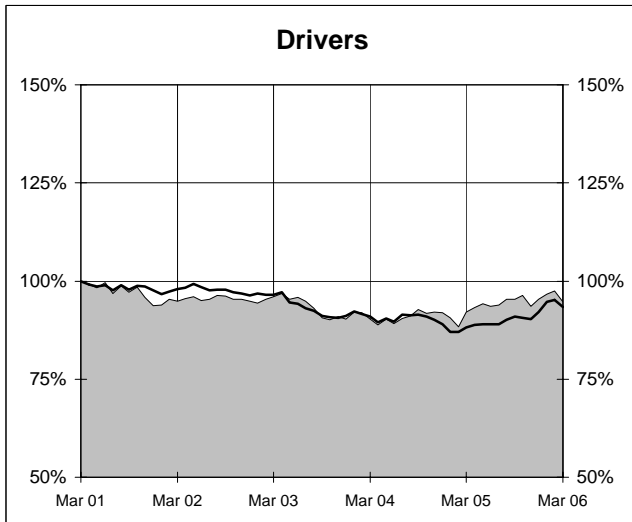
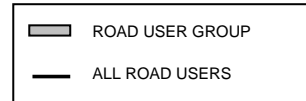
(d) Includes deaths with unstated age

- Percentage change not calculated

DEATHS IN EACH ROAD USER GROUP - TRENDS

Annual deaths in each road user group - last 5 years

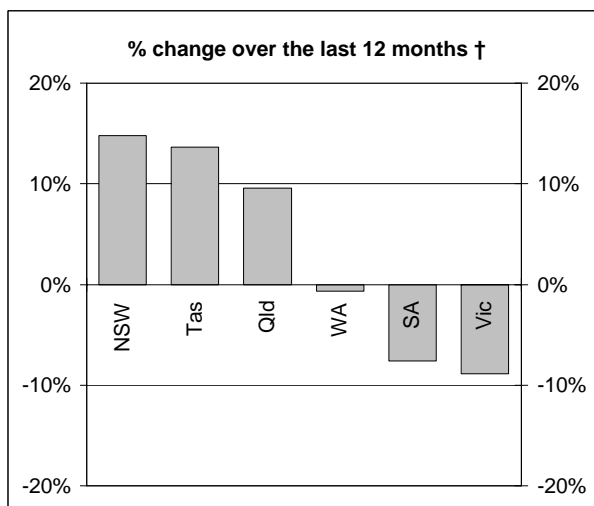
The number shown at each month represents the number of deaths in the preceding 12 months expressed as a percentage of the number of deaths in the 12 months to March 2001.



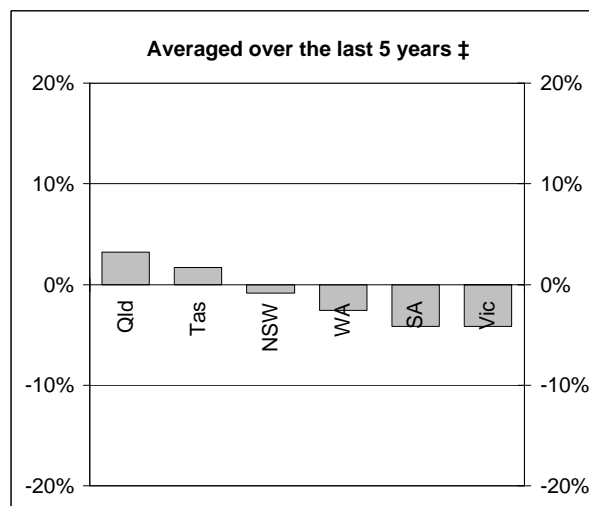
(a) Includes drivers and passengers

NUMBER OF FATAL ROAD CRASHES

Percentage change in fatal crashes in each State



† Percentage change between the 12-month periods of Apr 2004 - Mar 2005 and Apr 2005 - Mar 2006



‡ Average annual percentage change over each of the 12-month periods from Apr 2000 - Mar 2001 to Apr 2005 - Mar 2006

Fatal crashes by State/Territory for month, year to date and twelve months - period ended March 2006 and period ended March 2005

	NSW	Vic	Qld	SA	WA	Tas	NT	ACT	Australia
Current month									
Mar 2006	45	22	24	12	11	3	2	0	119
Mar 2005	35	41	23	20	14	2	3	1	139
% change	28.6	-46.3	4.3	-40.0	-21.4	50.0	-33.3	-100.0	-14.4
Year to date									
Jan 2006 - Mar 2006	129	76	72	29	43	10	5	2	366
Jan 2005 - Mar 2005	103	94	58	34	38	8	8	4	347
% change	25.2	-19.1	24.1	-14.7	13.2	25.0	-37.5	-50.0	5.5
12 months to date									
Apr 2005 - Mar 2006	497	298	309	122	156	50	48	23	1503
Apr 2004 - Mar 2005	433	327	282	132	157	44	32	10	1417
% change	14.8	-8.9	9.6	-7.6	-0.6	13.6	50.0	130.0	6.1
Ave annual % change (a)									
Mar 2001 to Mar 2006	-0.9	-4.2	3.2	-4.2	-2.6	1.7	0.0	5.0	-1.2

(a) This represents the average annual exponential change between the annual count of 5 years ago and the current annual count

FATAL CRASHES INVOLVING TRUCKS AND BUSES

Fatal crashes and deaths involving articulated trucks and buses -
twelve months ended March 2006 and twelve months ended March 2005

	NSW	Vic	Qld	SA	WA	Tas	NT	ACT	Australia
--	-----	-----	-----	----	----	-----	----	-----	-----------

FATAL CRASHES INVOLVING ARTICULATED TRUCKS

Number of crashes

Apr 2005 - Mar 2006	55	21	28	14	11	7	2	0	138
Apr 2004 - Mar 2005	51	29	14	14	11	3	1	0	123
									(+12.2%)

Number of deaths

Apr 2005 - Mar 2006	68	23	35	14	13	7	2	0	162
Apr 2004 - Mar 2005	56	32	15	19	11	3	1	0	137
									(+18.2%)

Note: Data on heavy rigid trucks not currently available

FATAL CRASHES INVOLVING BUSES

Number of crashes

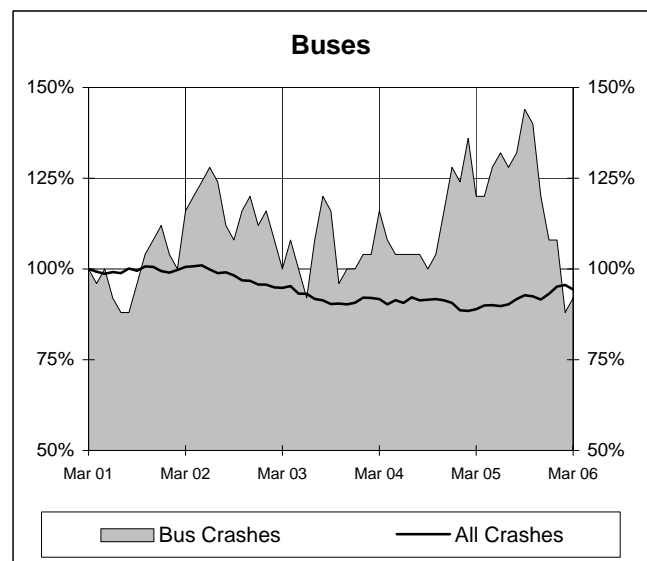
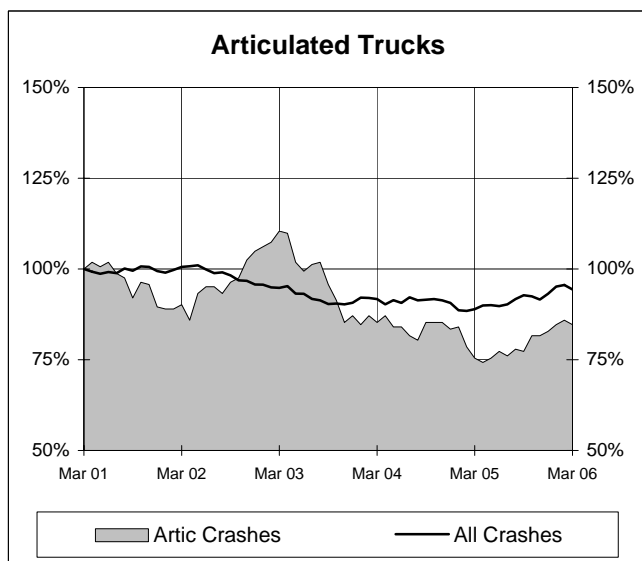
Apr 2005 - Mar 2006	12	3	8	0	0	0	0	0	23
Apr 2004 - Mar 2005	17	5	4	3	1	0	0	0	30
									(-23.3%)

Number of deaths

Apr 2005 - Mar 2006	18	4	10	0	0	0	0	0	32
Apr 2004 - Mar 2005	17	5	4	3	1	0	0	0	30
									(+6.7%)

Annual count of fatal crashes involving articulated trucks and buses - last 5 years

The number shown at each month represents the number of fatal crashes in the preceding 12 months expressed as a percentage of the number of fatal crashes in the 12 months to March 2001.



TIME SERIES - QUARTERLY REPORT

Road deaths by road user group, 1991 to 2004

	<i>Drivers</i>	<i>Passengers</i>	<i>Pedestrians</i>	<i>Motor cyclists (a)</i>	<i>Bicyclists (b)</i>	<i>All road users (c)</i>
1991	910	554	343	248	58	2113
1992	815	570	350	197	41	1974
1993	859	513	331	203	45	1953
1994	809	501	367	190	59	1928
1995	874	491	398	204	48	2017
1996	869	499	351	193	57	1970
1997	776	431	328	177	52	1767
1998	741	468	318	181	44	1755
1999	820	428	299	176	40	1764
2000	852	450	287	191	31	1817
2001	776	407	290	216	46	1737
2002	785	422	249	224	34	1715
2003	747	420	232	188	26	1621
2004	761	360	220	196	43	1583
2005	789	347	223	234	41	1639

(a) Includes pillion passengers.

(b) From 1989, includes pedal cycle passengers.

(c) Includes road users not separately classified.

Road deaths by State/Territory, 1991 to 2004

	<i>NSW</i>	<i>Vic</i>	<i>Qld</i>	<i>SA</i>	<i>WA</i>	<i>Tas</i>	<i>NT</i>	<i>ACT</i>	<i>Australia</i>
1991	663	503	395	184	207	77	67	17	2113
1992	649	396	416	165	200	74	54	20	1974
1993	581	435	396	218	209	58	44	12	1953
1994	646	377	418	159	211	59	41	17	1928
1995	620	418	456	181	209	57	61	15	2017
1996	581	417	385	181	247	64	72	23	1970
1997	576	377	360	148	197	32	60	17	1767
1998	556	390	279	168	223	48	69	22	1755
1999	577	383	314	151	218	53	49	19	1764
2000	603	407	317	166	212	43	51	18	1817
2001	524	444	324	153	165	61	50	16	1737
2002	561	397	322	154	179	37	55	10	1715
2003	539	330	310	157	180	41	53	11	1621
2004	510	343	311	139	178	58	35	9	1583
2005	520	348	329	148	163	50	55	26	1639

DEATH RATES - QUARTERLY REPORT

Road death rates by State/Territory

	<i>NSW</i>	<i>Vic</i>	<i>Qld</i>	<i>SA</i>	<i>WA</i>	<i>Tas</i>	<i>NT</i>	<i>ACT</i>	<i>Australia</i>
Per capita (a)									
2005	7.68	6.93	8.30	9.60	8.11	10.30	27.12	8.00	8.06
2001	7.97	9.24	8.93	10.12	8.68	12.93	25.28	5.01	8.95
Per vehicle (b)									
2005	1.25	0.95	1.19	1.33	1.07	1.38	5.01	1.18	1.18
2001	1.40	1.34	1.38	1.46	1.20	1.84	4.86	0.79	1.39

(a) Annual deaths per 100,000 population: 2005 at June 30 (preliminary data); 1999 at June 30 (revised data) taken from ABS catalogue 3201.0

(b) Annual deaths per 10,000 registered motor vehicles: 2005 at Mar 31; 1999 at Oct 31 taken from ABS catalogue 9309.0.

CHARACTERISTICS OF FATAL CRASHES

Proportion (per cent) of fatal crashes by speed limit, crash type, time of day, and time of week - two years ended March 2006 and two years ended March 2001

	<i>Speed limit (km/h) (a)</i>			<i>Time of Day</i>	
	<i>Up to 60</i>	<i>65-95</i>	<i>100+</i>	<i>Day time</i>	<i>Night-time (b)</i>
<i>Apr 2004 - Mar 2006</i>	32.9	21.6	45.5	54.8	45.2
<i>Apr 1999 - Mar 2001</i>	33.7	21.3	45.0	55.4	44.6

	<i>Crash Type</i>			<i>Time of week</i>	
	<i>Pedestrian crash</i>	<i>Other single veh. crash</i>	<i>Other multiple veh. crash</i>	<i>Week day</i>	<i>Week-end (c)</i>
<i>Apr 2004 - Mar 2006</i>	14.6	45.3	40.1	57.8	42.2
<i>Apr 1999 - Mar 2001</i>	18.2	40.2	41.6	60.6	39.4

(a) Excludes ACT

(b) 6:00 pm to 5:59 am

(c) 6:00 pm Friday to 5:59 am Monday