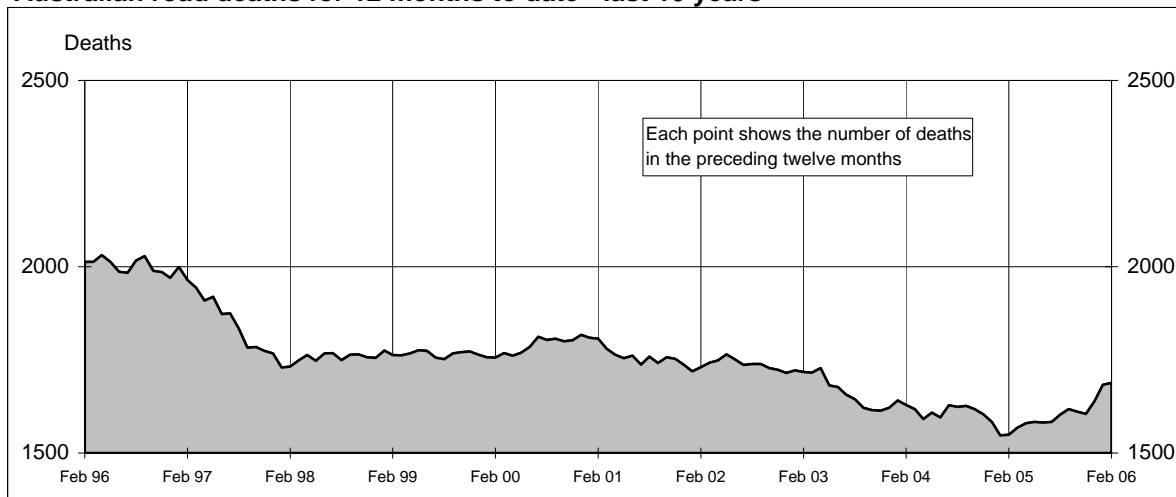
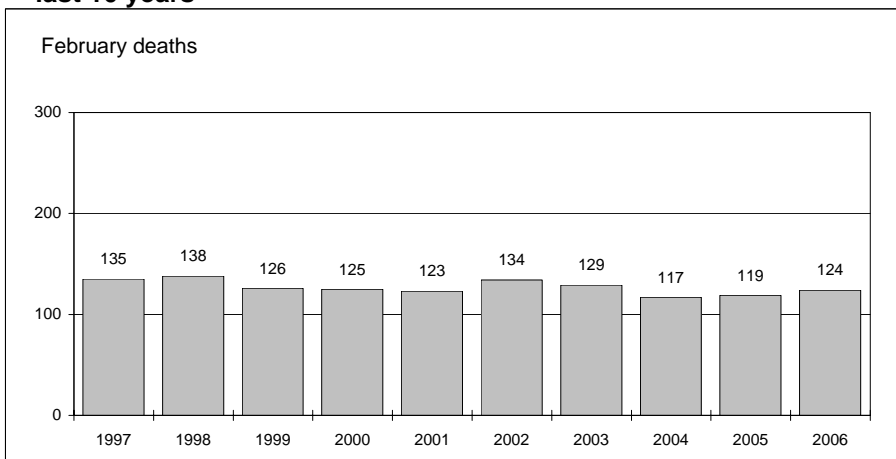




Australian road deaths for 12 months to date - last 10 years



Australian road deaths for February - last 10 years



Inquiries

For further information about data in this bulletin, contact:

The Editor
Transport Safety Statistics Unit
Australian Transport Safety Bureau
PO Box 967,
Civic Square, ACT 2608

Email: stats@atsb.gov.au
Internet: www.atsb.gov.au

Data Sources

The data presented here are obtained from the following sources:

Roads and Traffic Authority, NSW
Vicroads

Queensland Transport
South Australian Police Department
Western Australian Police Service
Department of Infrastructure,
Energy and Resources, Tasmania
Northern Territory Police,
Fire & Emergency Services
Department of Urban Services, ACT

Note

Road death statistics for recent months are preliminary and subject to revision. They include any deaths occurring within 30 days of a crash stemming from injuries received in the crash.

© Australian Government

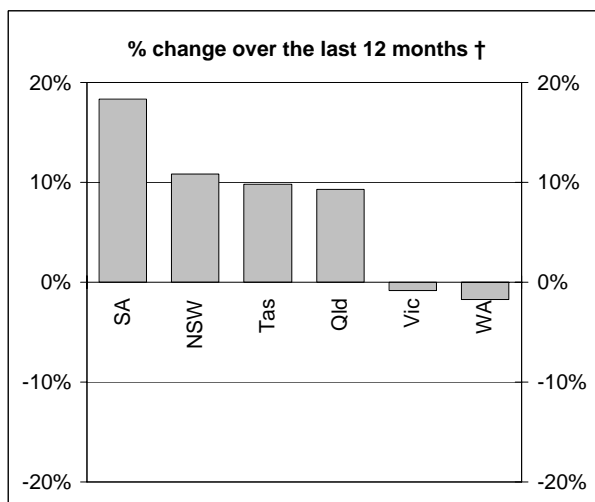
This month's key figures

The total number of road deaths in February 2006 was 124
- this is a 4.2% increase over the February 2005 figure.

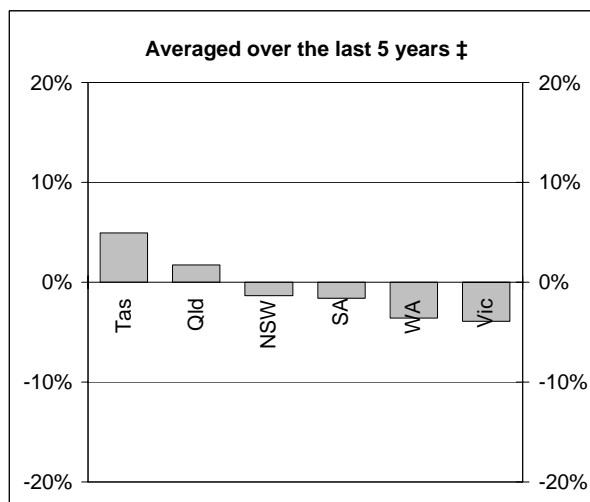
The number of road deaths in 2006 to the end of February is 279
- this is a 21.3% increase over the same 2 month period in 2005.

NUMBER OF ROAD CRASH DEATHS

Percentage change in road deaths in each State



† Percentage change between the 12-month periods of Mar 2004 - Feb 2005 and Mar 2005 - Feb 2006



‡ Average annual percentage change over each of the 12-month periods from Mar 2000 - Feb 2001 to Mar 2005 - Feb 2006

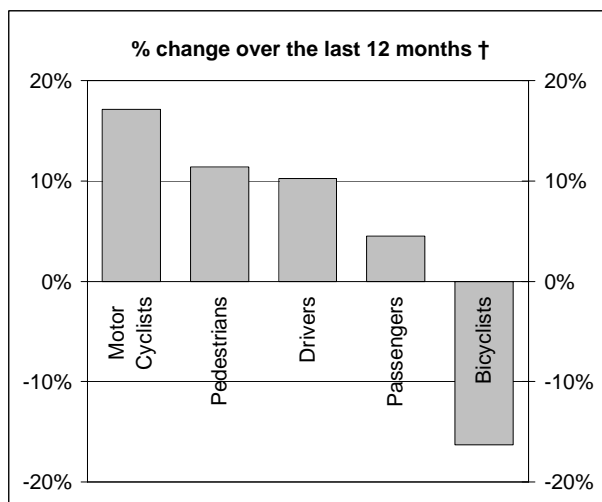
Road deaths by State/Territory for month, year to date, and twelve months - period ended February 2006 and period ended February 2005

	NSW	Vic	Qld	SA	WA	Tas	NT	ACT	Australia
Current month									
Feb 2006	39	33	20	9	12	7	2	2	124
Feb 2005	39	27	21	9	14	2	5	2	119
% change	0.0	22.2	-4.8	0.0	-14.3	250.0	-60.0	0.0	4.2
Year to date									
Jan 2006 - Feb 2006	95	58	49	22	38	12	3	2	279
Jan 2005 - Feb 2005	74	60	38	15	28	6	6	3	230
% change	28.4	-3.3	28.9	46.7	35.7	100.0	-50.0	-33.3	21.3
12-months to date									
Mar 2005 - Feb 2006	541	346	340	155	173	56	52	25	1688
Mar 2004 - Feb 2005	488	349	311	131	176	51	33	10	1549
Difference	53	-3	29	24	-3	5	19	15	139
% change	10.9	-0.9	9.3	18.3	-1.7	9.8	57.6	150.0	9.0
Ave annual % change (a)									
Feb 2001 to Feb 2006	-1.3	-3.9	1.7	-1.6	-3.6	4.9	-0.4	3.5	-1.4

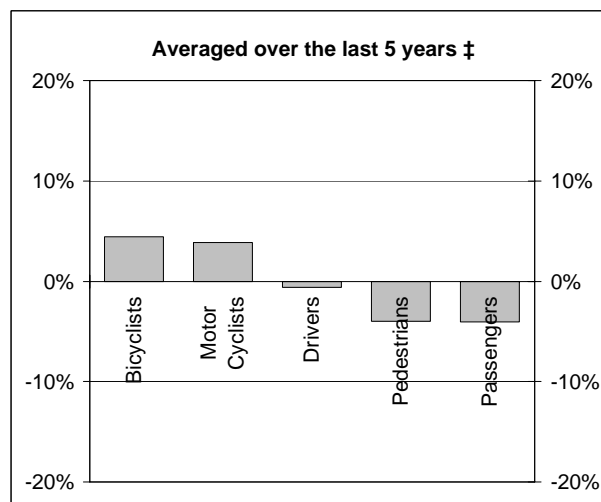
(a) This represents the average annual exponential change between the annual count of 5 years ago and the current annual count

DEATHS IN EACH ROAD USER GROUP

Percentage change in deaths in each road user group



† Percentage change between the 12-month periods of Mar 2004 - Feb 2005 and Mar 2005 - Feb 2006



‡ Average annual percentage change over each of the 12-month periods from Mar 2000 - Feb 2001 to Mar 2005 - Feb 2006

Road deaths by road user group and gender for twelve months ended February 2006 and twelve months ended February 2005

	Drivers	Passengers	Pedestrians	Motor cyclists (a)	Bicyclists	All road users (b)
Males						
Mar 2005 - Feb 2006	615	188	147	229	29	1210
Mar 2004 - Feb 2005	564	177	140	189	37	1111
% change	9.0	6.2	5.0	21.2	-21.6	8.9
Females						
Mar 2005 - Feb 2006	191	180	88	10	7	476
Mar 2004 - Feb 2005	167	177	71	15	6	438
% change	14.4	1.7	23.9	-33.3	16.7	8.7
Persons (c)						
Mar 2005 - Feb 2006	806	370	235	239	36	1688
Mar 2004 - Feb 2005	731	354	211	204	43	1549
% change	10.3	4.5	11.4	17.2	-16.3	9.0
Ave annual % change (d)						
Feb 2001 to Feb 2006	-0.6	-4.1	-4.0	3.8	4.4	-1.4

(a) Includes pillion passengers

(b) Includes road users not separately specified

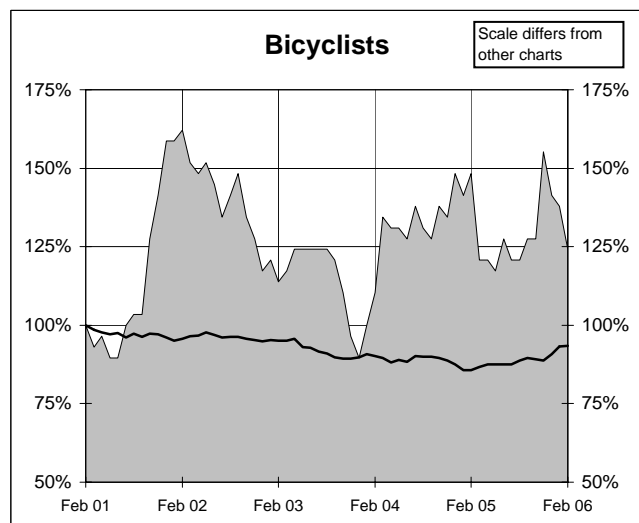
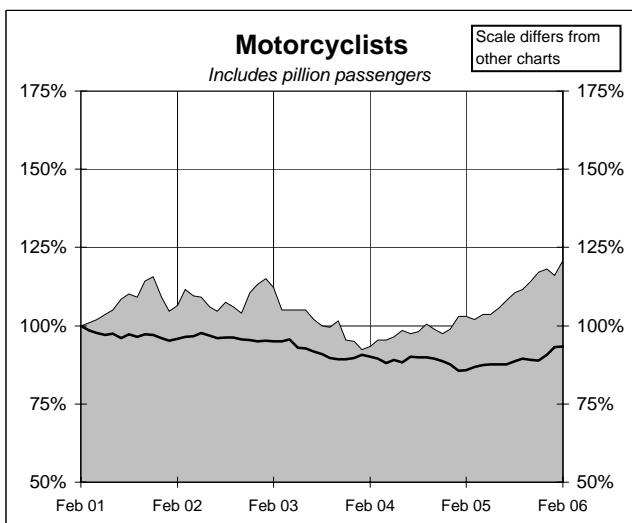
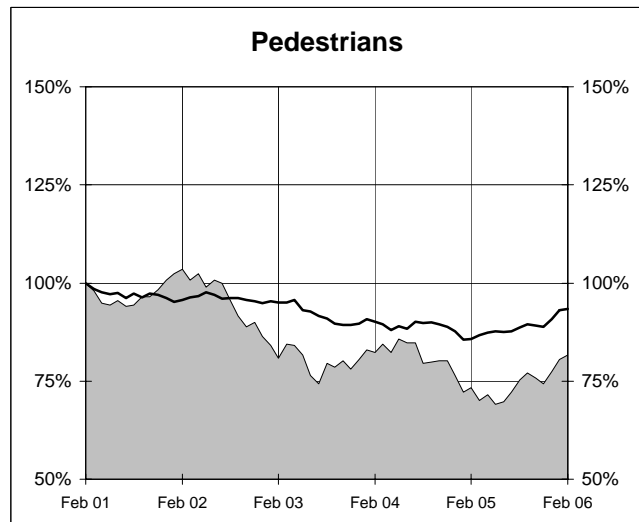
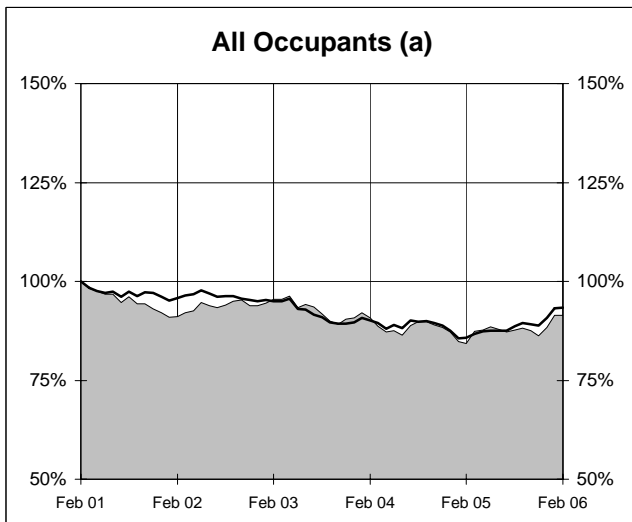
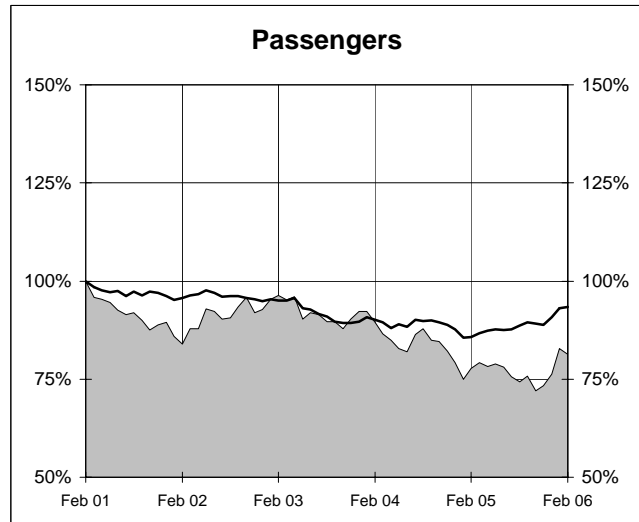
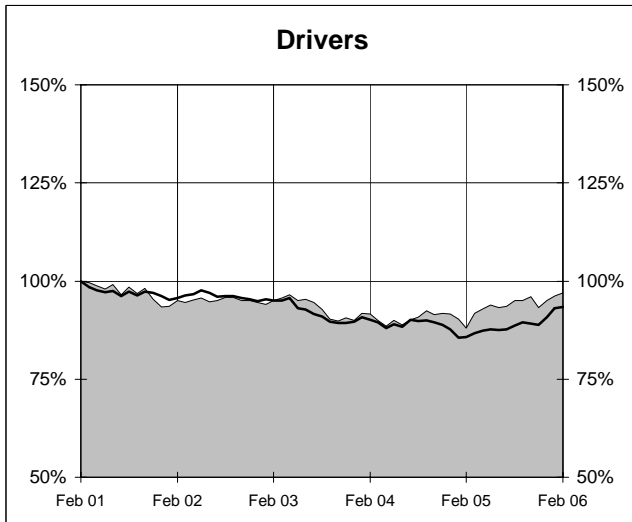
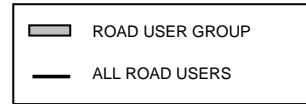
(c) Includes road users with unstated gender

(d) This represents the average annual exponential change between the annual count of 5 years ago and the current annual count

DEATHS IN EACH ROAD USER GROUP - TRENDS

Annual deaths in each road user group - last 5 years

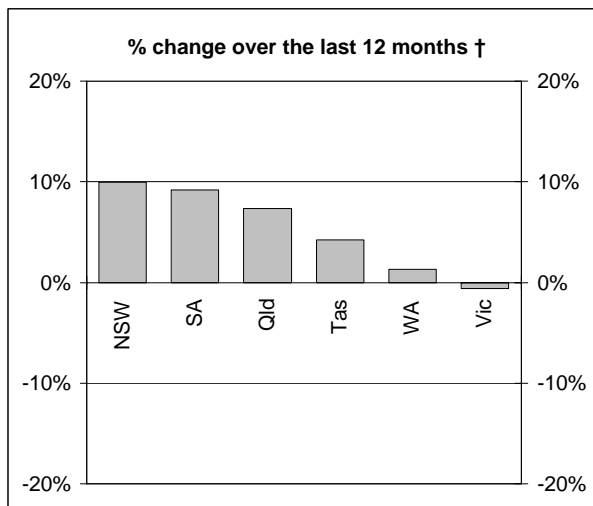
The number shown at each month represents the number of deaths in the preceding 12 months expressed as a percentage of the number of deaths in the 12 months to February 2001.



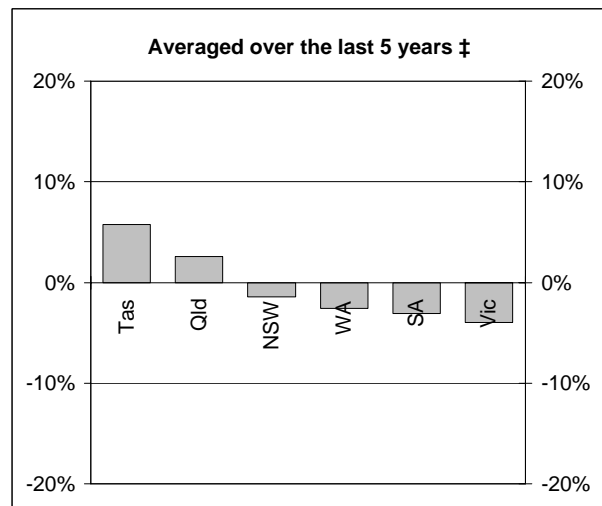
(a) Includes drivers and passengers

NUMBER OF FATAL ROAD CRASHES

Percentage change in fatal crashes in each State



† Percentage change between the 12-month periods of Mar 2004 - Feb 2005 and Mar 2005 - Feb 2006



‡ Average annual percentage change over each of the 12-month periods from Mar 2000 - Feb 2001 to Mar 2005 - Feb 2006

Fatal crashes by State/Territory for month, year to date and twelve months - period ended February 2006 and period ended February 2005

	NSW	Vic	Qld	SA	WA	Tas	NT	ACT	Australia
Current month									
Feb 2006	38	28	19	8	10	3	2	2	110
Feb 2005	35	24	19	8	12	2	4	2	106
% change	8.6	16.7	0.0	0.0	-16.7	50.0	-50.0	0.0	3.8
Year to date									
Jan 2006 - Feb 2006	83	50	48	18	32	7	3	2	243
Jan 2005 - Feb 2005	68	53	35	14	24	6	5	3	208
% change	22.1	-5.7	37.1	28.6	33.3	16.7	-40.0	-33.3	16.8
12 months to date									
Mar 2005 - Feb 2006	486	313	308	131	159	49	49	24	1519
Mar 2004 - Feb 2005	442	315	287	120	157	47	31	10	1409
% change	10.0	-0.6	7.3	9.2	1.3	4.3	58.1	140.0	7.8
Ave annual % change (a)									
Feb 2001 to Feb 2006	-1.4	-4.0	2.6	-3.1	-2.6	5.8	-0.4	4.8	-1.2

(a) This represents the average annual exponential change between the annual count of 5 years ago and the current annual count

FATAL CRASHES INVOLVING TRUCKS AND BUSES

Fatal crashes and deaths involving articulated trucks and buses - twelve months ended February 2006 and twelve months ended February 2005

	NSW	Vic	Qld	SA	WA	Tas	NT	ACT	Australia
--	-----	-----	-----	----	----	-----	----	-----	-----------

FATAL CRASHES INVOLVING ARTICULATED TRUCKS

Number of crashes

Mar 2005 - Feb 2006	55	24	29	13	11	6	2	0	140
Mar 2004 - Feb 2005	55	30	14	13	12	3	1	0	128
									(+9.4%)

Number of deaths

Mar 2005 - Feb 2006	69	28	36	15	13	6	2	0	169
Mar 2004 - Feb 2005	61	31	15	16	13	3	1	0	140
									(+20.7%)

Note: Data on heavy rigid trucks not currently available

FATAL CRASHES INVOLVING BUSES

Number of crashes

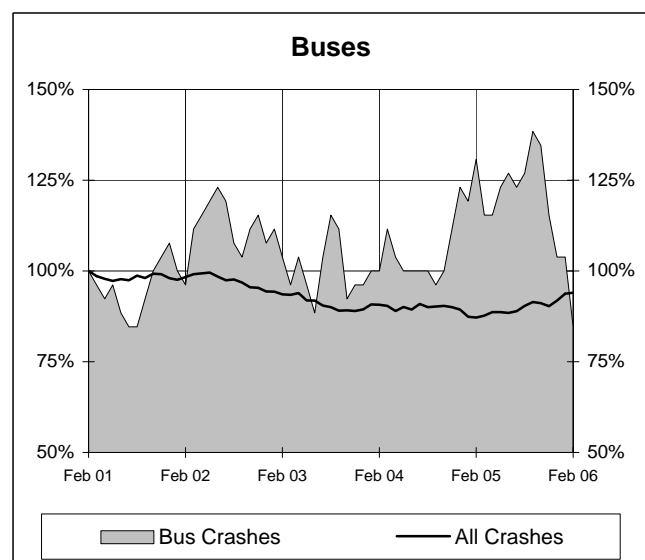
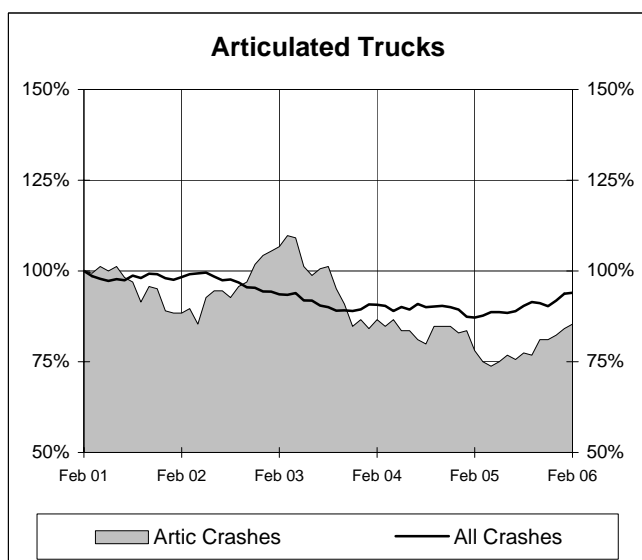
Mar 2005 - Feb 2006	10	3	8	0	1	0	0	0	22
Mar 2004 - Feb 2005	19	7	5	3	0	0	0	0	34
									(-35.3%)

Number of deaths

Mar 2005 - Feb 2006	16	4	10	0	1	0	0	0	31
Mar 2004 - Feb 2005	19	7	5	3	0	0	0	0	34
									(-8.8%)

Annual count of fatal crashes involving articulated trucks and buses - last 5 years

The number shown at each month represents the number of fatal crashes in the preceding 12 months expressed as a percentage of the number of fatal crashes in the 12 months to February 2001.



CHARACTERISTICS OF FATAL CRASHES

Proportion (per cent) of fatal crashes by speed limit, crash type, time of day, and time of week - two years ended February 2006 and two years ended February 2001

	<i>Speed limit (km/h) (a)</i>			<i>Time of Day</i>	
	<i>Up to 60</i>	<i>65-95</i>	<i>100+</i>	<i>Day time</i>	<i>Night-time (b)</i>
<i>Mar 2004 - Feb 2006</i>	32.7	22.0	45.3	54.9	45.1
<i>Mar 1999 - Feb 2001</i>	33.6	21.4	45.0	55.1	44.9

	<i>Crash Type</i>			<i>Time of week</i>	
	<i>Pedestrian crash</i>	<i>Other single veh. crash</i>	<i>Other multiple veh. crash</i>	<i>Week day</i>	<i>Week- end (c)</i>
<i>Mar 2004 - Feb 2006</i>	15.0	44.6	40.4	58.4	41.6
<i>Mar 1999 - Feb 2001</i>	18.4	39.9	41.7	60.5	39.5

(a) Excludes ACT

(b) 6:00 pm to 5:59 am

(c) 6:00 pm Friday to 5:59 am Monday