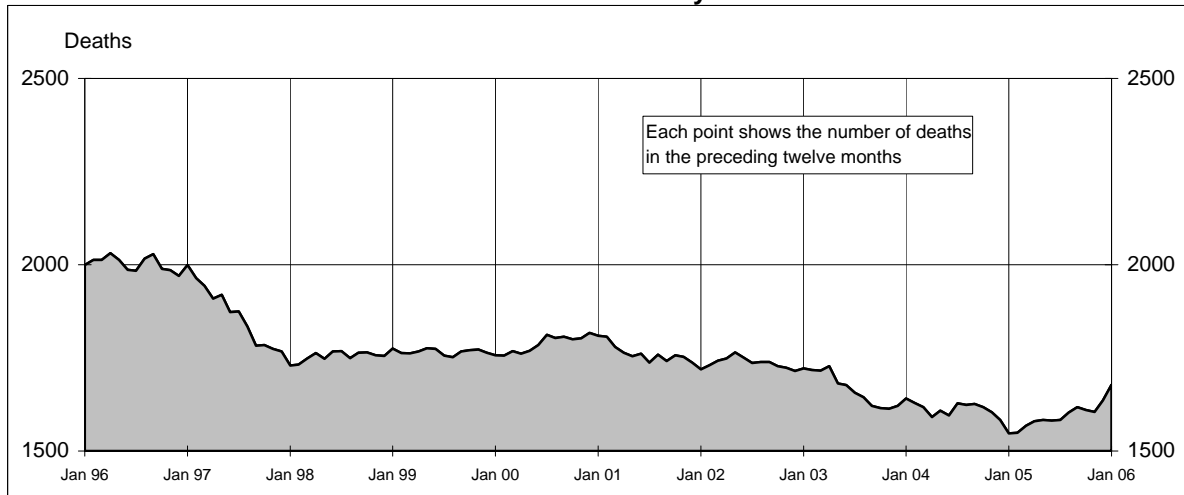
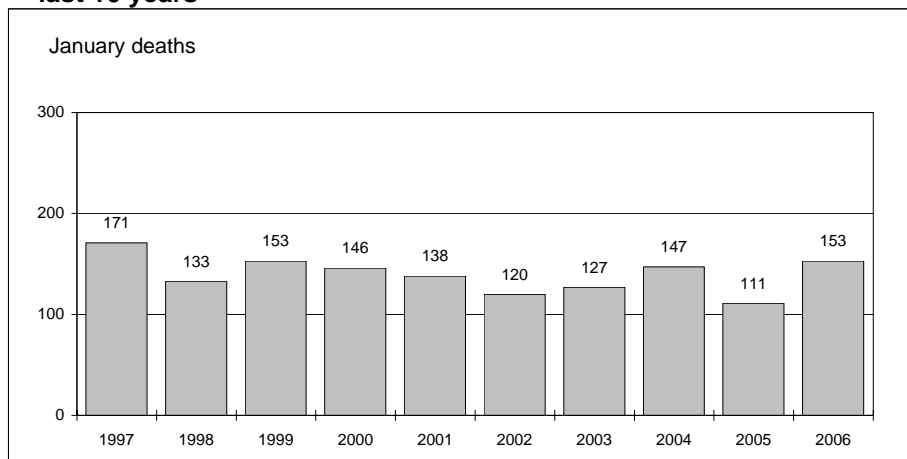




#### Australian road deaths for 12 months to date - last 10 years



#### Australian road deaths for January - last 10 years



#### Inquiries

For further information about data in this bulletin, contact:

The Editor  
Transport Safety Statistics Unit  
Australian Transport Safety Bureau  
PO Box 967,  
Civic Square, ACT 2608

Email: [stats@atsb.gov.au](mailto:stats@atsb.gov.au)  
Internet: [www.atsb.gov.au](http://www.atsb.gov.au)

#### Data Sources

The data presented here are obtained from the following sources:

Roads and Traffic Authority, NSW  
Vicroads  
Queensland Transport  
South Australian Police Department  
Western Australian Police Service  
Department of Infrastructure,  
Energy and Resources, Tasmania  
Northern Territory Police,  
Fire & Emergency Services  
Department of Urban Services, ACT

#### Note

Road death statistics for recent months are preliminary and subject to revision. They include any deaths occurring within 30 days of a crash stemming from injuries received in the crash.

© Australian Government

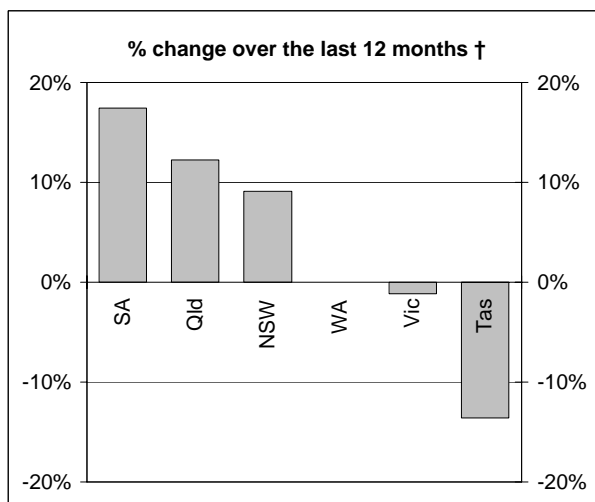
#### This month's key figures

The total number of road deaths in January 2006 was 153  
- this is a 37.8% increase over the January 2005 figure.

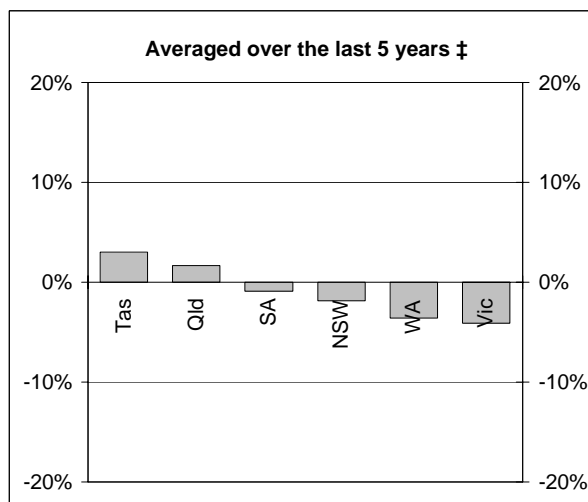
The number of road deaths in 2006 to the end of January is 153  
- this is a 37.8% increase over the same 1 month period in 2005.

# NUMBER OF ROAD CRASH DEATHS

## Percentage change in road deaths in each State



† Percentage change between the 12-month periods of Feb 2004 - Jan 2005 and Feb 2005 - Jan 2006



‡ Average annual percentage change over each of the 12-month periods from Feb 2000 - Jan 2001 to Feb 2005 - Jan 2006

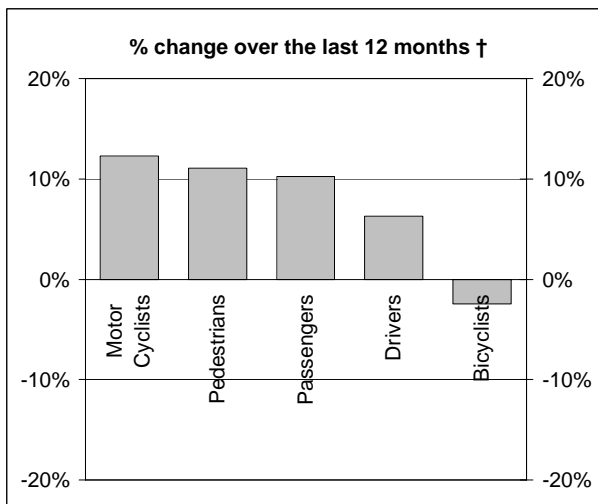
## Road deaths by State/Territory for month, year to date, and twelve months - period ended January 2006 and period ended January 2005

	NSW	Vic	Qld	SA	WA	Tas	NT	ACT	Australia
<b>Current month</b>									
Jan 2006	55	25	28	13	26	5	1	0	153
Jan 2005	35	33	17	6	14	4	1	1	111
% change	57.1	-24.2	64.7	116.7	85.7	25.0	0.0	-100.0	37.8
<b>Year to date</b>									
Jan 2006 - Jan 2006	55	25	28	13	26	5	1	0	153
Jan 2005 - Jan 2005	35	33	17	6	14	4	1	1	111
% change	57.1	-24.2	64.7	116.7	85.7	25.0	0.0	-100.0	37.8
<b>12-months to date</b>									
Feb 2005 - Jan 2006	538	340	339	155	175	51	55	25	1678
Feb 2004 - Jan 2005	493	344	302	132	175	59	34	8	1547
Difference	45	-4	37	23	0	-8	21	17	131
% change	9.1	-1.2	12.3	17.4	0.0	-13.6	61.8	212.5	8.5
<b>Ave annual % change (a)</b>									
Jan 2001 to Jan 2006	-1.9	-4.1	1.7	-0.9	-3.6	3.0	1.5	4.6	-1.5

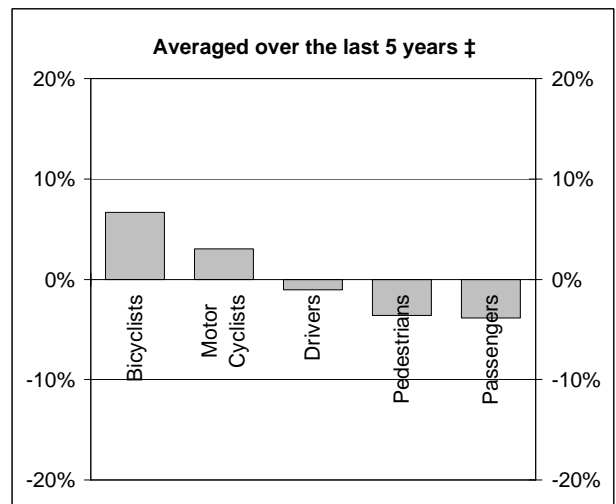
(a) This represents the average annual exponential change between the annual count of 5 years ago and the current annual count

# DEATHS IN EACH ROAD USER GROUP

## Percentage change in deaths in each road user group



† Percentage change between the 12-month periods of Feb 2004 - Jan 2005 and Feb 2005 - Jan 2006



‡ Average annual percentage change over each of the 12-month periods from Feb 2000 - Jan 2001 to Feb 2005 - Jan 2006

## Road deaths by road user group and gender for twelve months ended January 2006 and twelve months ended January 2005

	Drivers	Passengers	Pedestrians	Motor cyclists (a)	Bicyclists	All road users (b)
<b>Males</b>						
Feb 2005 - Jan 2006	611	197	151	219	31	1213
Feb 2004 - Jan 2005	582	170	135	188	36	1113
% change	<b>5.0</b>	<b>15.9</b>	<b>11.9</b>	<b>16.5</b>	<b>-13.9</b>	<b>9.0</b>
<b>Females</b>						
Feb 2005 - Jan 2006	186	177	80	10	9	463
Feb 2004 - Jan 2005	168	171	73	16	5	434
% change	<b>10.7</b>	<b>3.5</b>	<b>9.6</b>	<b>-37.5</b>	<b>80.0</b>	<b>6.7</b>
<b>Persons (c)</b>						
Feb 2005 - Jan 2006	797	376	231	229	40	1678
Feb 2004 - Jan 2005	750	341	208	204	41	1547
% change	<b>6.3</b>	<b>10.3</b>	<b>11.1</b>	<b>12.3</b>	<b>-2.4</b>	<b>8.5</b>
<b>Ave annual % change (d)</b>						
Jan 2001 to Jan 2006	<b>-1.1</b>	<b>-3.9</b>	<b>-3.6</b>	<b>3.1</b>	<b>6.6</b>	<b>-1.5</b>

(a) Includes pillion passengers

(b) Includes road users not separately specified

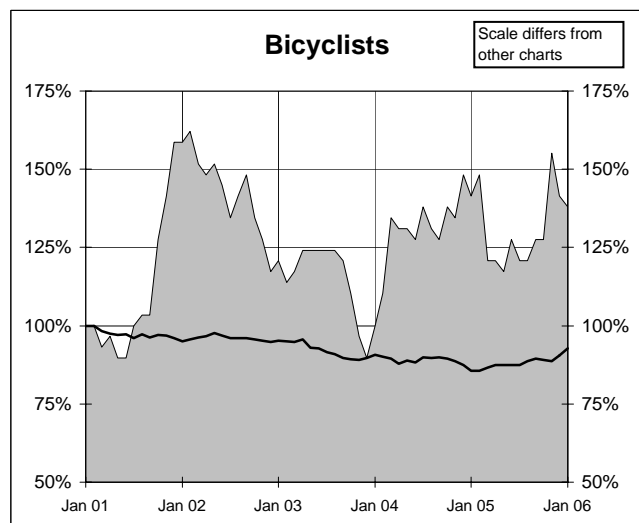
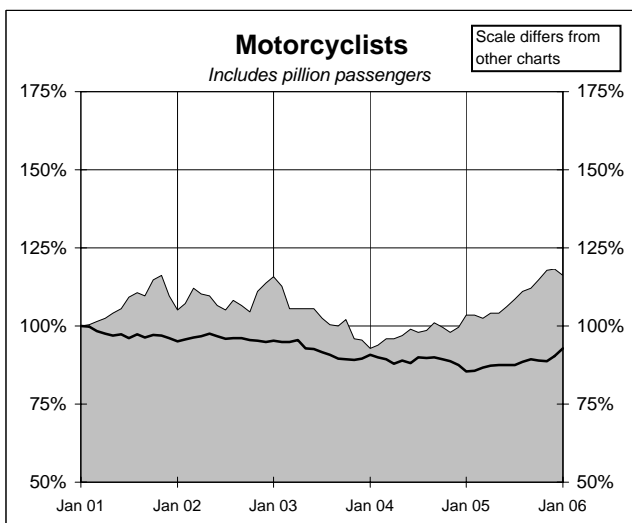
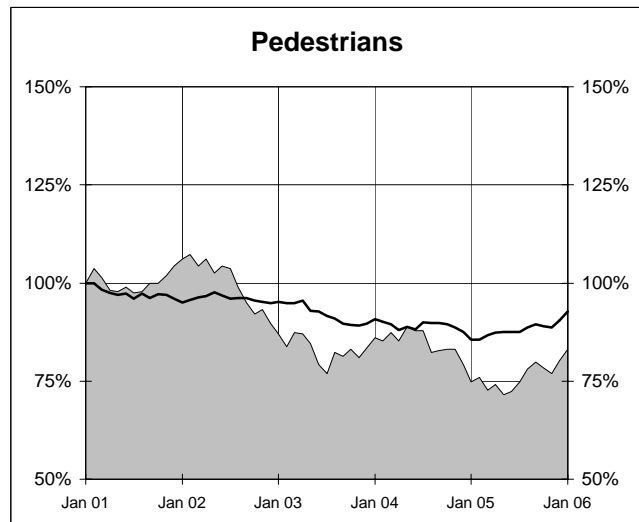
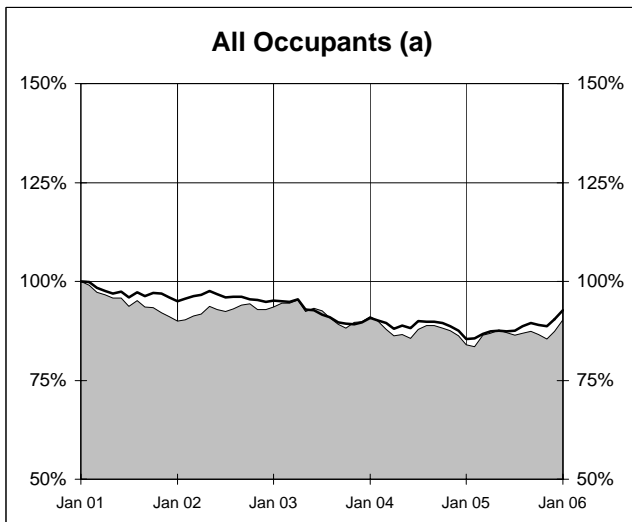
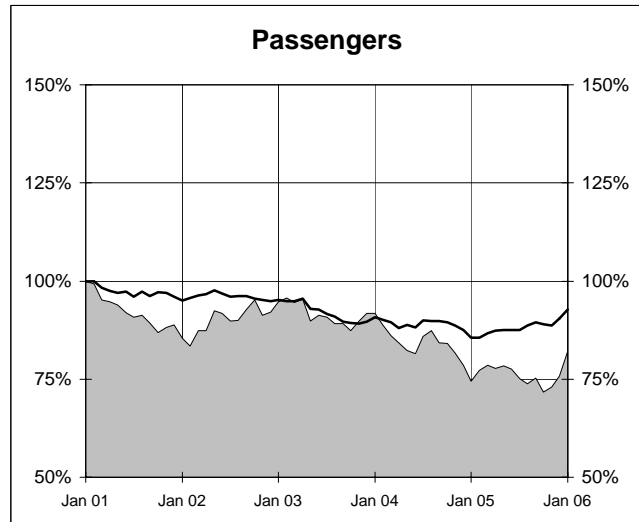
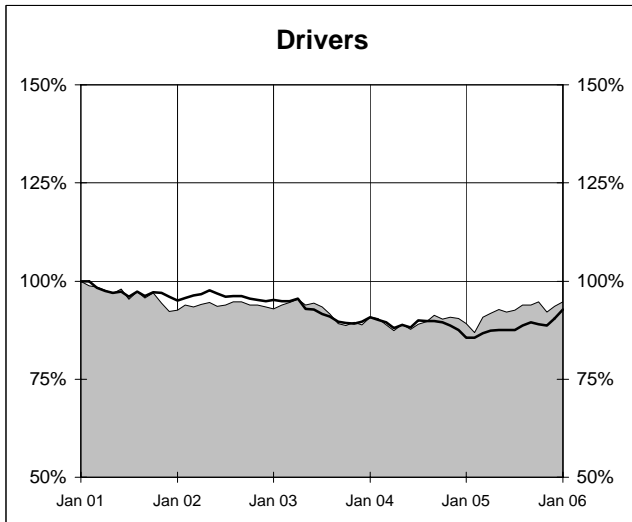
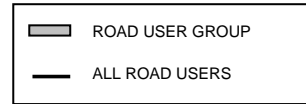
(c) Includes road users with unstated gender

(d) This represents the average annual exponential change between the annual count of 5 years ago and the current annual count

# DEATHS IN EACH ROAD USER GROUP - TRENDS

## Annual deaths in each road user group - last 5 years

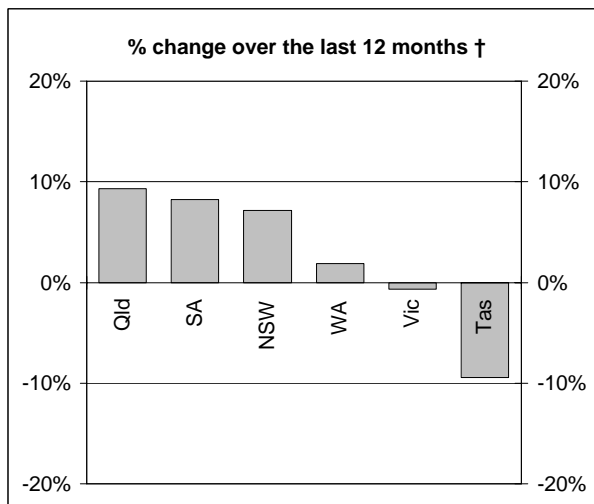
The number shown at each month represents the number of deaths in the preceding 12 months expressed as a percentage of the number of deaths in the 12 months to January 2001.



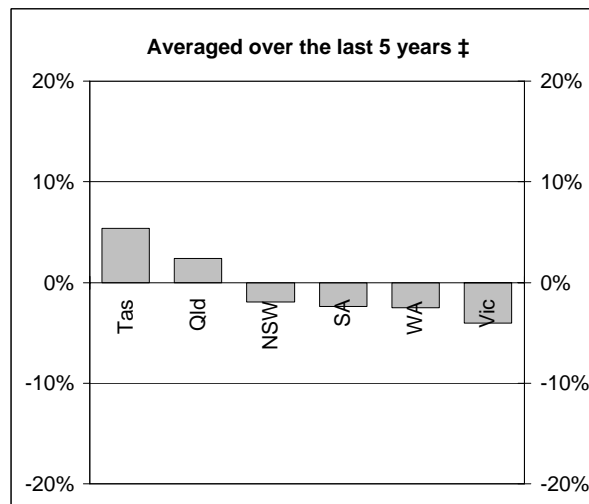
(a) Includes drivers and passengers

# NUMBER OF FATAL ROAD CRASHES

## Percentage change in fatal crashes in each State



† Percentage change between the 12-month periods of Feb 2004 - Jan 2005 and Feb 2005 - Jan 2006



‡ Average annual percentage change over each of the 12-month periods from Feb 2000 - Jan 2001 to Feb 2005 - Jan 2006

## Fatal crashes by State/Territory for month, year to date and twelve months - period ended January 2006 and period ended January 2005

	NSW	Vic	Qld	SA	WA	Tas	NT	ACT	Australia
<b>Current month</b>									
Jan 2006	44	22	28	10	22	4	1	0	131
Jan 2005	33	29	16	6	12	4	1	1	102
% change	<b>33.3</b>	<b>-24.1</b>	<b>75.0</b>	<b>66.7</b>	<b>83.3</b>	<b>0.0</b>	<b>0.0</b>	<b>-100.0</b>	<b>28.4</b>
<b>Year to date</b>									
Jan 2006 - Jan 2006	44	22	28	10	22	4	1	0	131
Jan 2005 - Jan 2005	33	29	16	6	12	4	1	1	102
% change	<b>33.3</b>	<b>-24.1</b>	<b>75.0</b>	<b>66.7</b>	<b>83.3</b>	<b>0.0</b>	<b>0.0</b>	<b>-100.0</b>	<b>28.4</b>
<b>12 months to date</b>									
Feb 2005 - Jan 2006	480	309	306	131	161	48	51	24	1510
Feb 2004 - Jan 2005	448	311	280	121	158	53	33	8	1412
% change	<b>7.1</b>	<b>-0.6</b>	<b>9.3</b>	<b>8.3</b>	<b>1.9</b>	<b>-9.4</b>	<b>54.5</b>	<b>200.0</b>	<b>6.9</b>
<b>Ave annual % change (a)</b>									
Jan 2001 to Jan 2006	<b>-2.0</b>	<b>-4.1</b>	<b>2.4</b>	<b>-2.4</b>	<b>-2.5</b>	<b>5.3</b>	<b>1.2</b>	<b>5.9</b>	<b>-1.3</b>

(a) This represents the average annual exponential change between the annual count of 5 years ago and the current annual count

# FATAL CRASHES INVOLVING TRUCKS AND BUSES

Fatal crashes and deaths involving articulated trucks and buses -  
twelve months ended January 2006 and twelve months ended January 2005

	NSW	Vic	Qld	SA	WA	Tas	NT	ACT	Australia
--	-----	-----	-----	----	----	-----	----	-----	-----------

## FATAL CRASHES INVOLVING ARTICULATED TRUCKS

### Number of crashes

Feb 2005 - Jan 2006	51	27	27	15	11	6	1	0	138
Feb 2004 - Jan 2005	63	31	14	11	14	3	1	0	137
									(+0.7%)

### Number of deaths

Feb 2005 - Jan 2006	65	31	34	17	13	6	1	0	167
Feb 2004 - Jan 2005	70	32	15	14	15	3	1	0	150
									(+11.3%)

Note: Data on heavy rigid trucks not currently available

## FATAL CRASHES INVOLVING BUSES

### Number of crashes

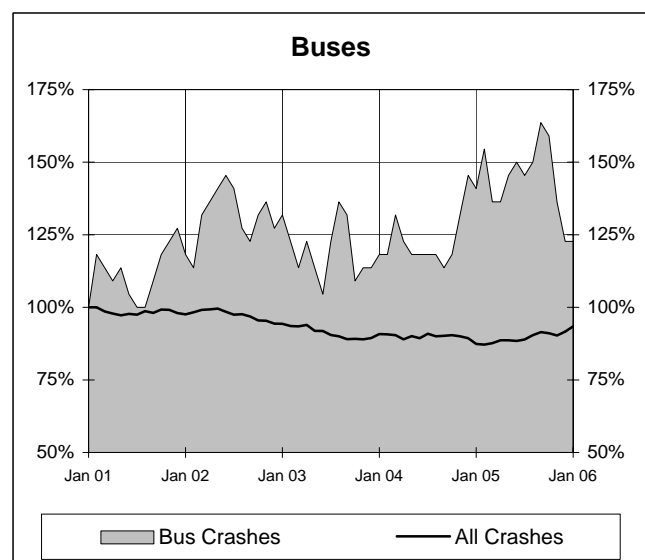
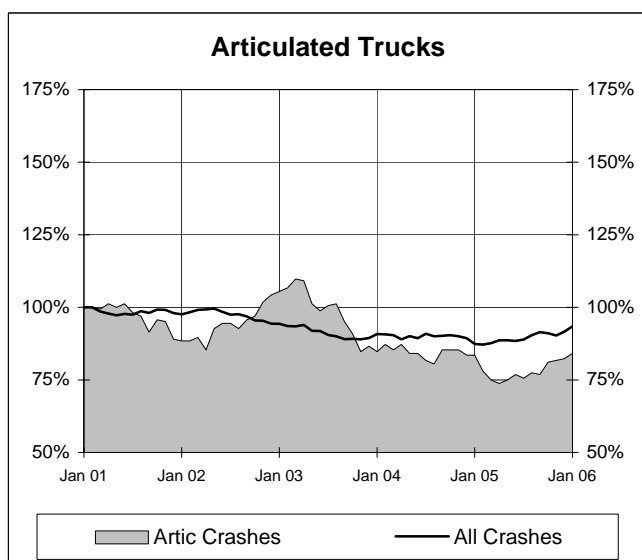
Feb 2005 - Jan 2006	14	4	8	0	1	0	0	0	27
Feb 2004 - Jan 2005	15	6	6	4	0	0	0	0	31
									(-12.9%)

### Number of deaths

Feb 2005 - Jan 2006	20	5	10	0	1	0	0	0	36
Feb 2004 - Jan 2005	15	6	6	4	0	0	0	0	31
									(+16.1%)

## Annual count of fatal crashes involving articulated trucks and buses - last 5 years

The number shown at each month represents the number of fatal crashes in the preceding 12 months expressed as a percentage of the number of fatal crashes in the 12 months to January 2001.



## CHARACTERISTICS OF FATAL CRASHES

Proportion (per cent) of fatal crashes by speed limit, crash type, time of day, and time of week - two years ended January 2006 and two years ended January 2001

	<i>Speed limit (km/h) (a)</i>			<i>Time of Day</i>	
	<i>Up to 60</i>	<i>65-95</i>	<i>100+</i>	<i>Day time</i>	<i>Night-time (b)</i>
<i>Feb 2004 - Jan 2006</i>	32.4	21.9	45.8	54.9	45.1
<i>Feb 1999 - Jan 2001</i>	33.3	21.5	45.2	55.2	44.8

	<i>Crash Type</i>			<i>Time of week</i>	
	<i>Pedestrian crash</i>	<i>Other single veh. crash</i>	<i>Other multiple veh. crash</i>	<i>Week day</i>	<i>Week- end (c)</i>
<i>Feb 2004 - Jan 2006</i>	14.9	44.6	40.5	58.3	41.7
<i>Feb 1999 - Jan 2001</i>	18.3	40.1	41.6	60.3	39.7

(a) Excludes ACT

(b) 6:00 pm to 5:59 am

(c) 6:00 pm Friday to 5:59 am Monday