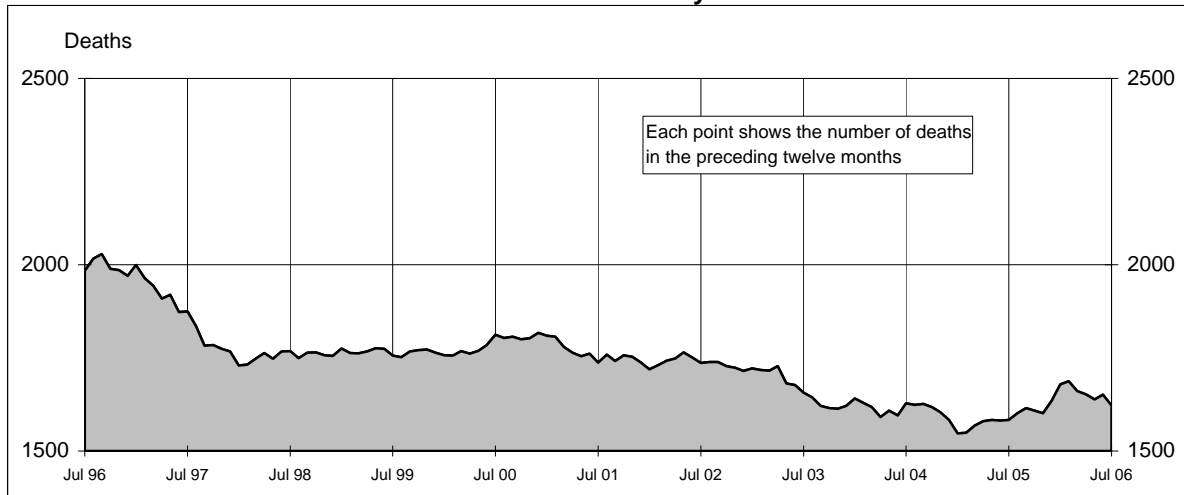
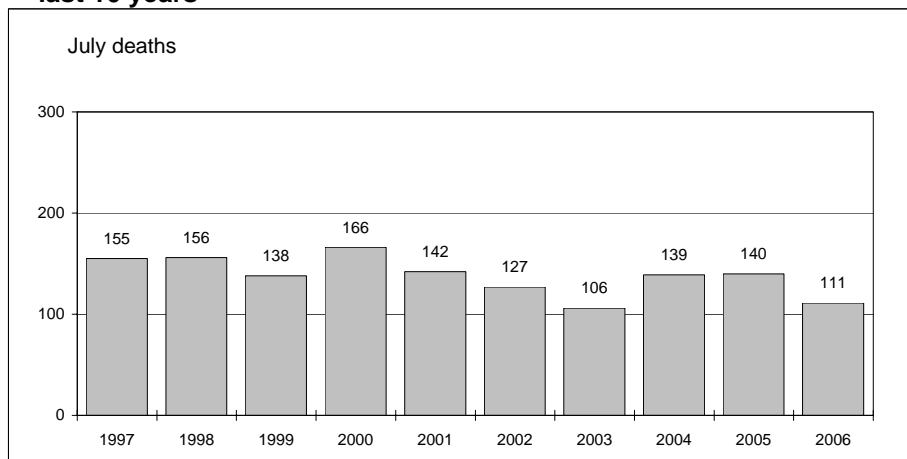




Australian road deaths for 12 months to date - last 10 years



Australian road deaths for July - last 10 years



Inquiries

For further information about data in this bulletin, contact:

The Editor
Transport Safety Statistics Unit
Australian Transport Safety Bureau
PO Box 967,
Civic Square, ACT 2608

Email: stats@atsb.gov.au
Internet: www.atsb.gov.au

Data Sources

The data presented here are obtained from the following sources:

Roads and Traffic Authority, NSW
Vicroads
Queensland Transport
South Australian Police Department
Western Australian Police Service
Department of Infrastructure,
Energy and Resources, Tasmania
Northern Territory Police,
Fire & Emergency Services
Department of Urban Services, ACT

Note

Road death statistics for recent months are preliminary and subject to revision. They include any deaths occurring within 30 days of a crash stemming from injuries received in the crash.

© Australian Government

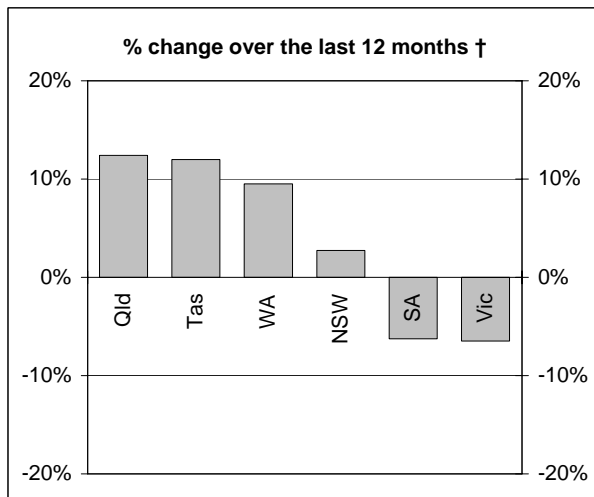
This month's key figures

The total number of road deaths in July 2006 was 111
- this is a 20.7% decrease from the July 2005 figure.

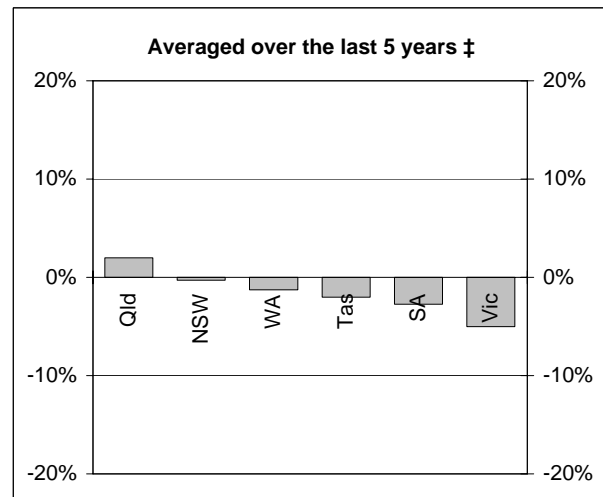
The number of road deaths in 2006 to the end of July is 917
- this is a 1.4% decrease from the same 7 month period in 2005.

NUMBER OF ROAD CRASH DEATHS

Percentage change in road deaths in each State



† Percentage change between the 12-month periods of Aug 2004 - Jul 2005 and Aug 2005 - Jul 2006



‡ Average annual percentage change over each of the 12-month periods from Aug 2000 - Jul 2001 to Aug 2005 - Jul 2006

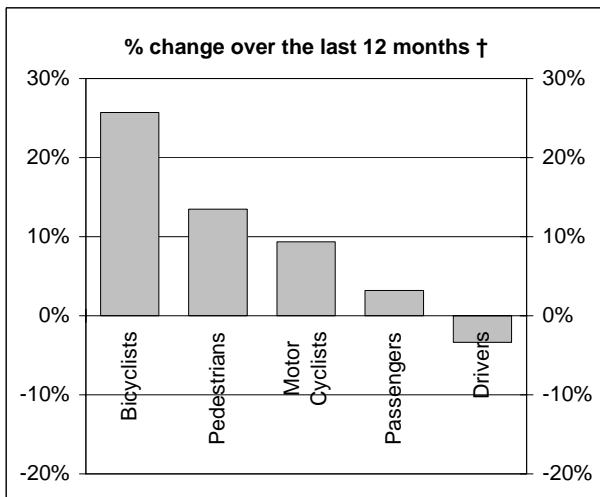
Road deaths by State/Territory for month, year to date, and twelve months - period ended July 2006 and period ended July 2005

	NSW	Vic	Qld	SA	WA	Tas	NT	ACT	Australia
Current month									
Jul 2006	35	23	24	8	16	1	4	0	111
Jul 2005	50	30	22	17	10	0	5	6	140
% change	-30.0	-23.3	9.1	-52.9	60.0	-	-20.0	-100.0	-20.7
Year to date									
Jan 2006 - Jul 2006	318	180	180	77	110	30	18	4	917
Jan 2005 - Jul 2005	305	211	166	90	89	25	27	17	930
% change	4.3	-14.7	8.4	-14.4	23.6	20.0	-33.3	-76.5	-1.4
12-months to date									
Aug 2005 - Jul 2006	527	317	344	135	184	56	46	13	1622
Aug 2004 - Jul 2005	513	339	306	144	168	50	43	20	1583
Difference	14	-22	38	-9	16	6	3	-7	39
% change	2.7	-6.5	12.4	-6.3	9.5	12.0	7.0	-35.0	2.5
Ave annual % change (a)									
Jul 2001 to Jul 2006	-0.3	-5.0	2.0	-2.7	-1.3	-2.0	-0.8	-7.3	-1.4

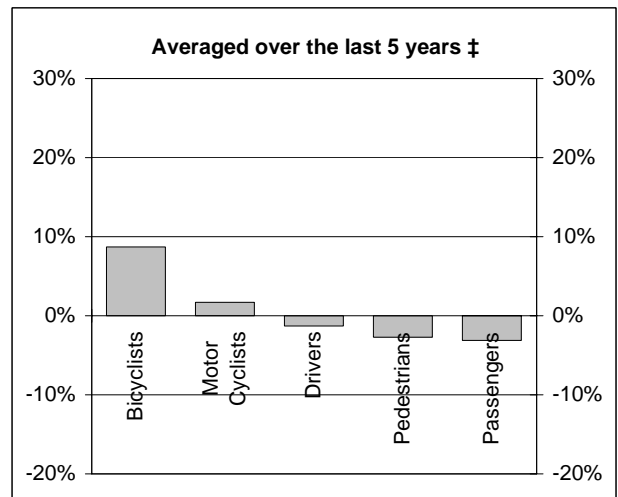
(a) This represents the average annual exponential change between the annual count of 5 years ago and the current annual count

DEATHS IN EACH ROAD USER GROUP

Percentage change in deaths in each road user group



† Percentage change between the 12-month periods of Aug 2004 - Jul 2005 and Aug 2005 - Jul 2006



‡ Average annual percentage change over each of the 12-month periods from Aug 2000 - Jul 2001 to Aug 2005 - Jul 2006

Road deaths by road user group and gender for twelve months ended July 2006 and twelve months ended July 2005

	Drivers	Passengers	Pedestrians	Motor cyclists (a)	Bicyclists	All road users (b)
Males						
Aug 2005 - Jul 2006	574	194	151	225	36	1181
Aug 2004 - Jul 2005	599	189	128	198	30	1147
% change	-4.2	2.6	18.0	13.6	20.0	3.0
Females						
Aug 2005 - Jul 2006	175	159	84	9	8	435
Aug 2004 - Jul 2005	179	155	80	16	5	436
% change	-2.2	2.6	5.0	-43.8	60.0	-0.2
Persons (c)						
Aug 2005 - Jul 2006	752	355	236	234	44	1622
Aug 2004 - Jul 2005	778	344	208	214	35	1583
% change	-3.3	3.2	13.5	9.3	25.7	2.5
Ave annual % change (d)						
Jul 2001 to Jul 2006	-1.3	-3.1	-2.7	1.7	8.7	-1.4

(a) Includes pillion passengers

(b) Includes road users not separately specified

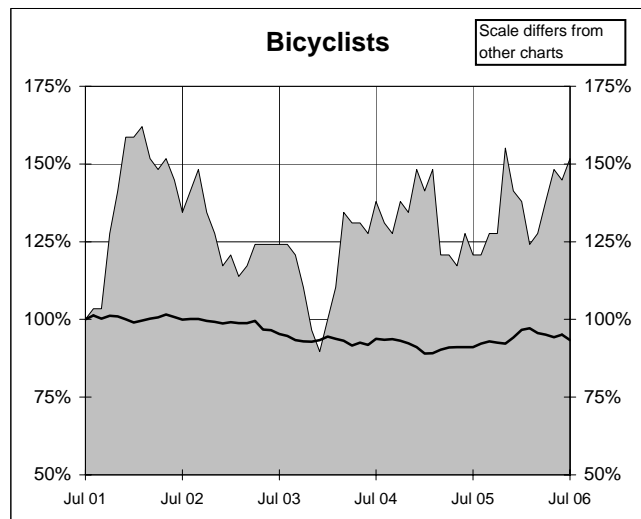
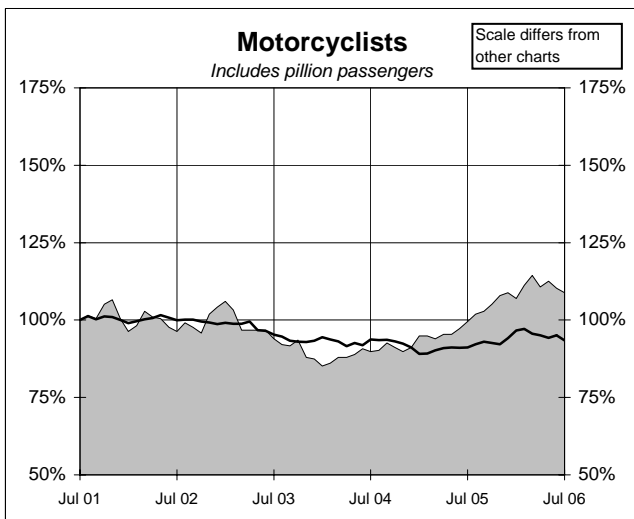
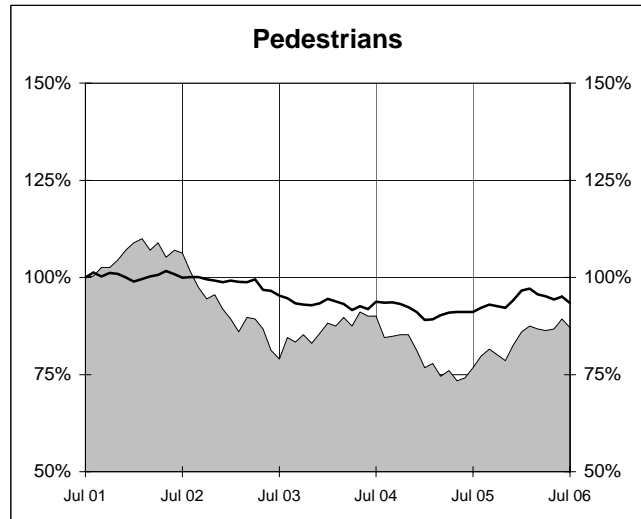
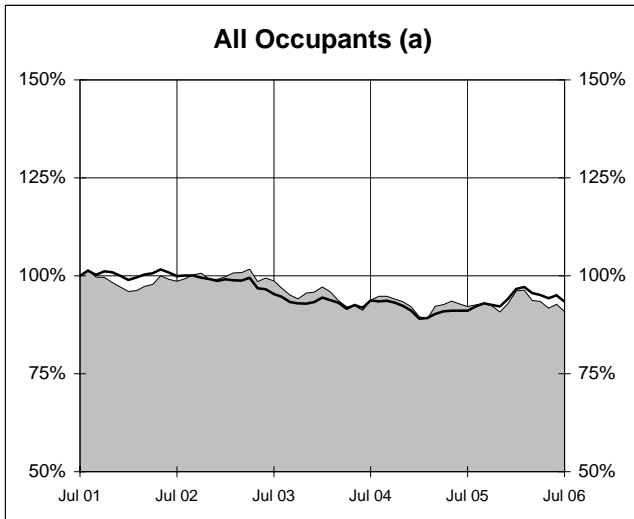
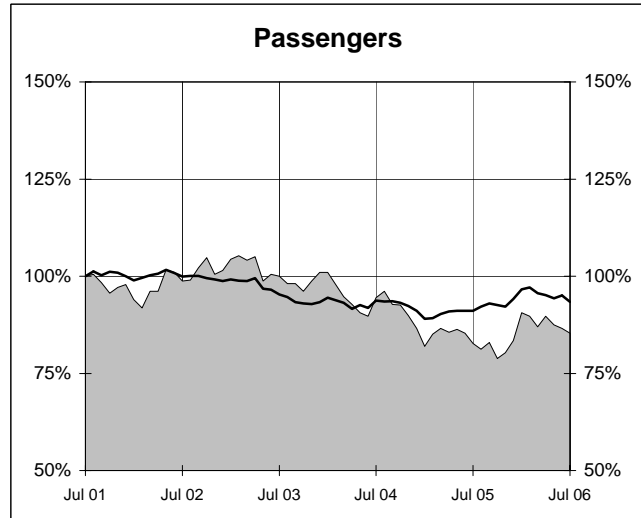
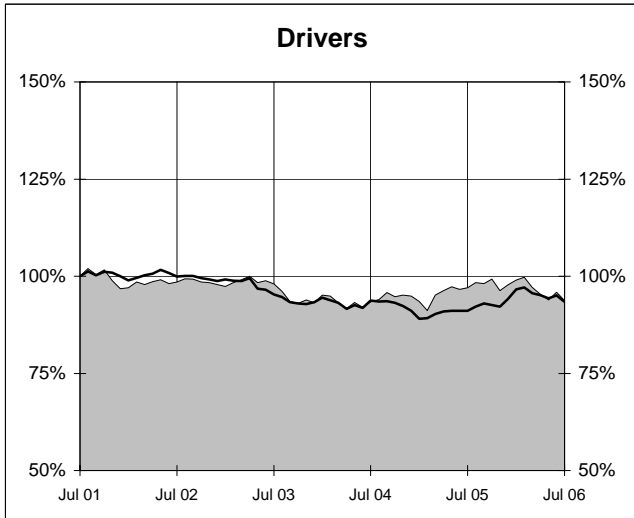
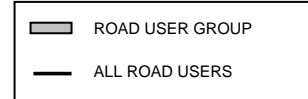
(c) Includes road users with unstated gender

(d) This represents the average annual exponential change between the annual count of 5 years ago and the current annual count

DEATHS IN EACH ROAD USER GROUP - TRENDS

Annual deaths in each road user group - last 5 years

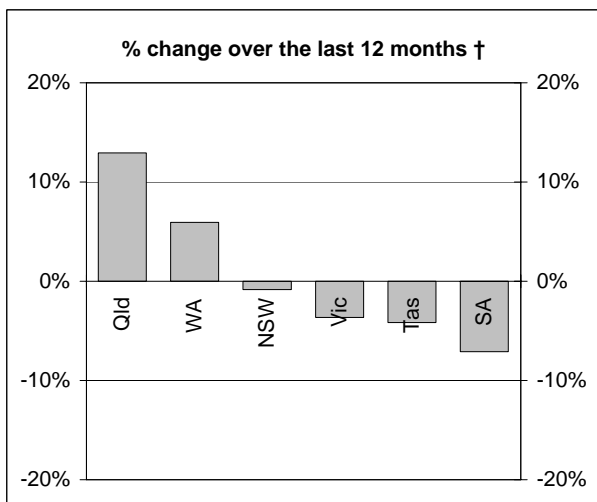
The number shown at each month represents the number of deaths in the preceding 12 months expressed as a percentage of the number of deaths in the 12 months to July 2001.



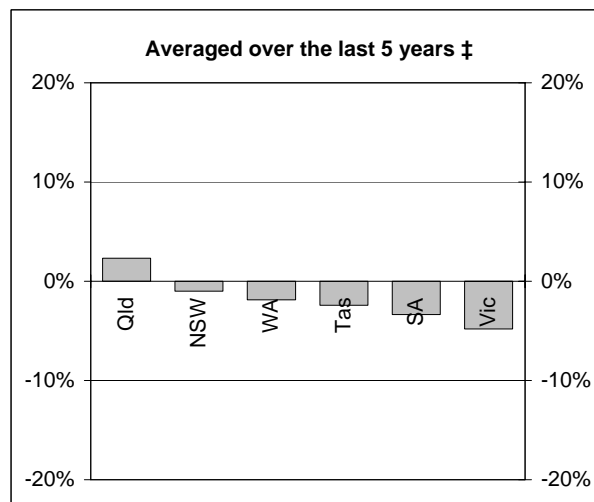
(a) Includes drivers and passengers

NUMBER OF FATAL ROAD CRASHES

Percentage change in fatal crashes in each State



† Percentage change between the 12-month periods of Aug 2004 - Jul 2005 and Aug 2005 - Jul 2006



‡ Average annual percentage change over each of the 12-month periods from Aug 2000 - Jul 2001 to Aug 2005 - Jul 2006

Fatal crashes by State/Territory for month, year to date and twelve months - period ended July 2006 and period ended July 2005

	NSW	Vic	Qld	SA	WA	Tas	NT	ACT	Australia
Current month									
Jul 2006	33	21	22	7	11	1	4	0	99
Jul 2005	46	26	21	16	10	0	5	5	129
% change	-28.3	-19.2	4.8	-56.3	10.0	-	-20.0	-100.0	-23.3
Year to date									
Jan 2006 - Jul 2006	284	163	168	69	93	22	18	4	821
Jan 2005 - Jul 2005	281	188	150	78	83	25	24	16	845
% change	1.1	-13.3	12.0	-11.5	12.0	-12.0	-25.0	-75.0	-2.8
12 months to date									
Aug 2005 - Jul 2006	468	291	314	118	161	46	45	13	1456
Aug 2004 - Jul 2005	472	302	278	127	152	48	39	19	1437
% change	-0.8	-3.6	12.9	-7.1	5.9	-4.2	15.4	-31.6	1.3
Ave annual % change (a)									
Jul 2001 to Jul 2006	-1.0	-4.8	2.3	-3.4	-1.9	-2.4	0.5	-6.3	-1.6

(a) This represents the average annual exponential change between the annual count of 5 years ago and the current annual count

FATAL CRASHES INVOLVING TRUCKS AND BUSES

Fatal crashes and deaths involving articulated trucks and buses - twelve months ended July 2006 and twelve months ended July 2005

	NSW	Vic	Qld	SA	WA	Tas	NT	ACT
--	-----	-----	-----	----	----	-----	----	-----

FATAL CRASHES INVOLVING ARTICULATED TRUCKS

Number of crashes

Aug 2005 - Jul 2006	58	N/A	30	13	11	5	4	0
Aug 2004 - Jul 2005	54	25	18	11	12	4	0	0

Number of deaths

Aug 2005 - Jul 2006	71	N/A	38	13	12	5	4	0
Aug 2004 - Jul 2005	59	28	19	13	14	4	0	0

Note: Data on heavy rigid trucks not currently available

FATAL CRASHES INVOLVING BUSES

Number of crashes

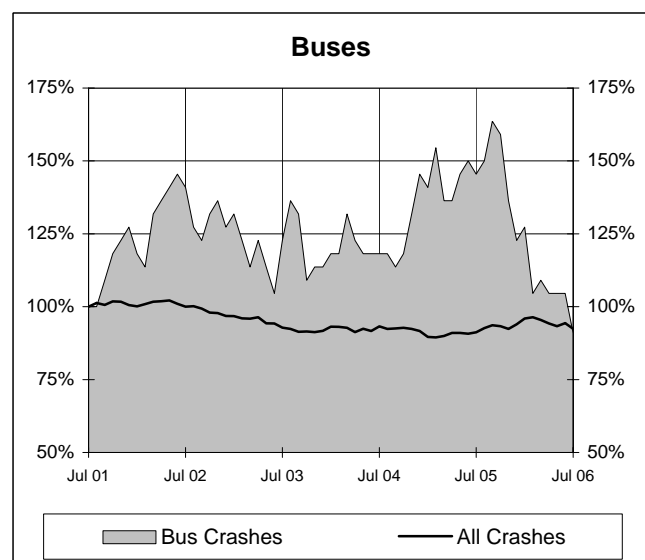
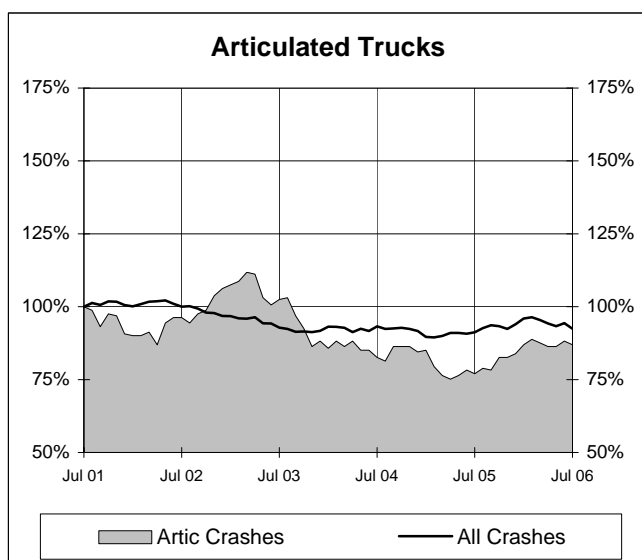
Aug 2005 - Jul 2006	7	4	8	0	0	1	0	0	20
Aug 2004 - Jul 2005	22	3	4	2	1	0	0	0	32
									(-37.5%)

Number of deaths

Aug 2005 - Jul 2006	9	5	10	0	0	1	0	0	25
Aug 2004 - Jul 2005	26	3	4	2	1	0	0	0	36
									(-30.6%)

Annual count of fatal crashes involving articulated trucks and buses - last 5 years

The number shown at each month represents the number of fatal crashes in the preceding 12 months expressed as a percentage of the number of fatal crashes in the 12 months to July 2001.



CHARACTERISTICS OF FATAL CRASHES

Proportion (per cent) of fatal crashes by speed limit, crash type, time of day, and time of week - two years ended July 2006 and two years ended July 2001

	Speed limit (km/h) (a)			Time of Day	
	Up to 60	65-95	100+	Day time	Night-time (b)
Aug 2004 - Jul 2006	32.4	22.3	45.3	54.6	45.4
Aug 1999 - Jul 2001	33.5	21.3	45.2	55.5	44.5

	Crash Type			Time of week	
	Pedestrian crash	Other single veh. crash	Other multiple veh. crash	Week day	Week- end (c)
Aug 2004 - Jul 2006	15.0	45.1	39.9	57.8	42.2
Aug 1999 - Jul 2001	18.0	41.2	40.8	60.0	40.0

(a) Excludes ACT

(b) 6:00 pm to 5:59 am.

(c) 6:00 pm Friday to 5:59 am Monday