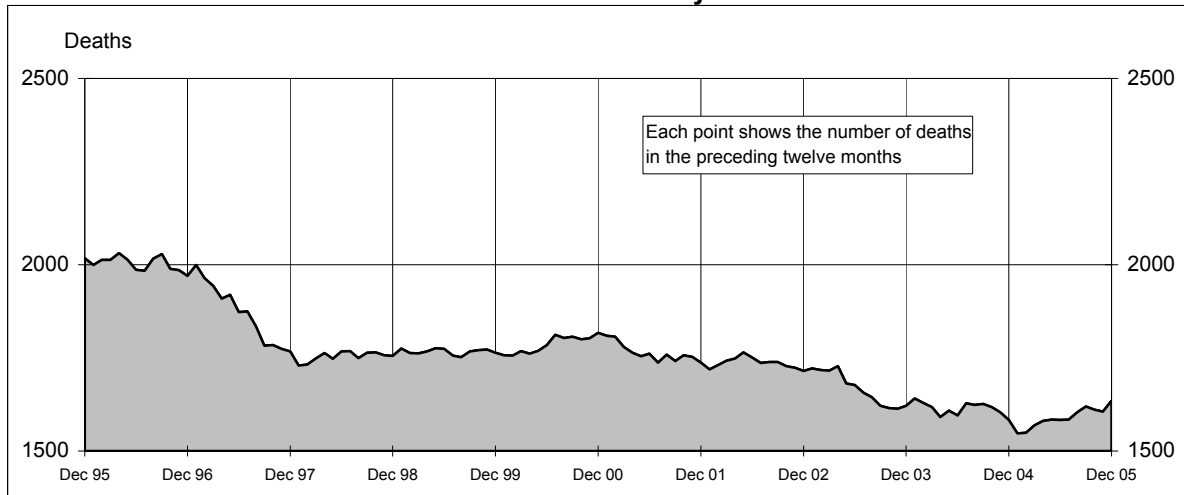
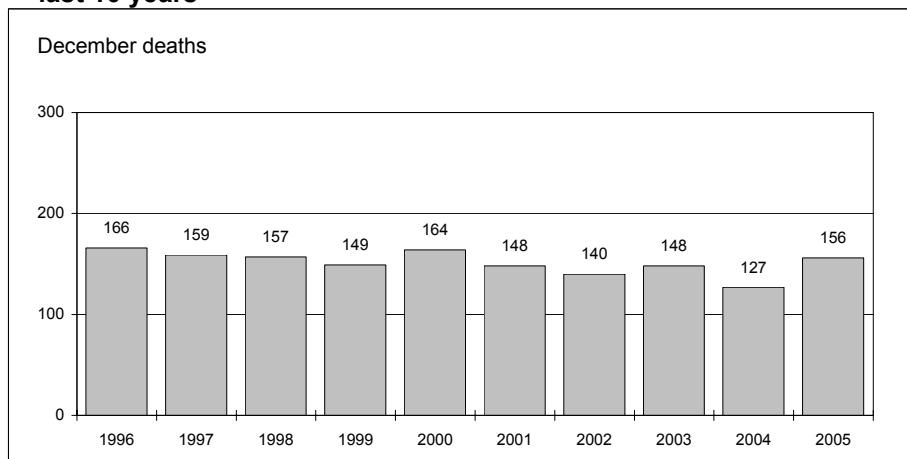




Australian road deaths for 12 months to date - last 10 years



Australian road deaths for December - last 10 years



Inquiries

For further information about data in this bulletin, contact:

The Editor
Transport Safety Statistics Unit
Australian Transport Safety Bureau
PO Box 967,
Civic Square, ACT 2608

Email: stats@atsb.gov.au
Internet: www.atsb.gov.au

Data Sources

The data presented here are obtained from the following sources:

Roads and Traffic Authority, NSW
Vicroads

Queensland Transport
South Australian Police Department
Western Australian Police Service
Department of Infrastructure,
Energy and Resources, Tasmania
Northern Territory Police,
Fire & Emergency Services
Department of Urban Services, ACT

Note

Road death statistics for recent months are preliminary and subject to revision. They include any deaths occurring within 30 days of a crash stemming from injuries received in the crash.

© Australian Government

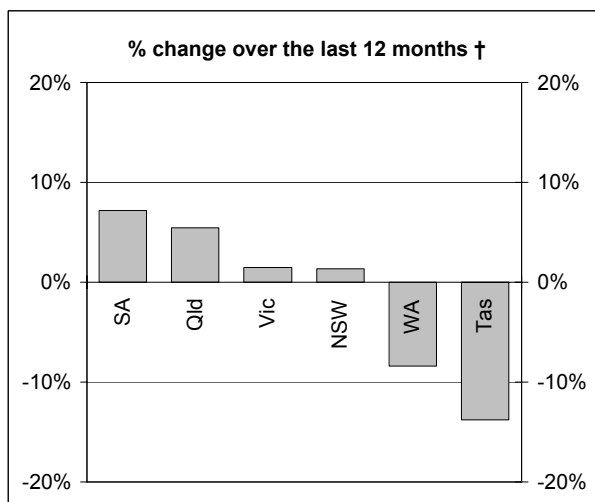
This month's key figures

The total number of road deaths in December 2005 was 156
- this is a 22.8% increase over the December 2004 figure.

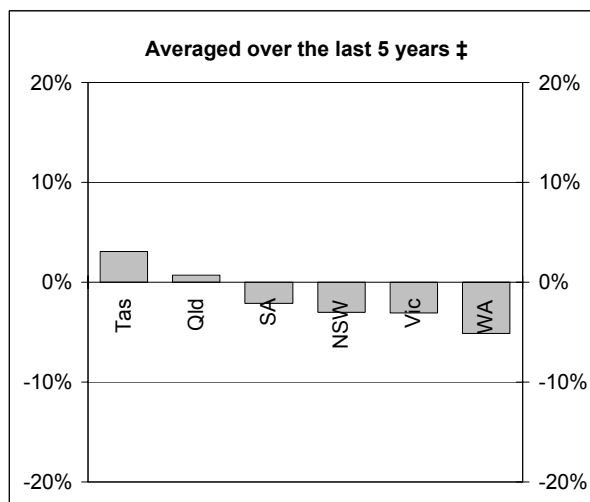
The number of road deaths in 2005 to the end of December is 1,635
- this is a 3.3% increase over the same 12 month period in 2004.

NUMBER OF ROAD CRASH DEATHS

Percentage change in road deaths in each State



† Percentage change between the 12-month periods of Jan 2004 - Dec 2004 and Jan 2005 - Dec 2005



‡ Average annual percentage change over each of the 12-month periods from Jan 2000 - Dec 2000 to Jan 2005 - Dec 2005

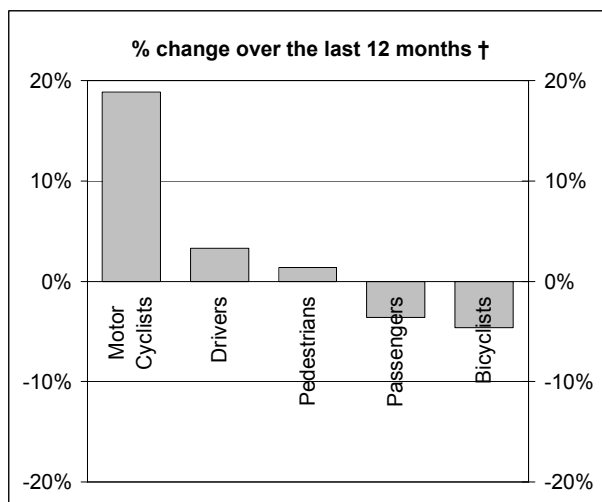
Road deaths by State/Territory for month, year to date, and twelve months - period ended December 2005 and period ended December 2004

	NSW	Vic	Qld	SA	WA	Tas	NT	ACT	Australia
Current month									
Dec 2005	43	36	36	14	15	7	4	1	156
Dec 2004	40	27	26	9	19	2	4	0	127
% change	7.5	33.3	38.5	55.6	-21.1	250.0	0.0	-	22.8
Year to date									
Jan 2005 - Dec 2005	517	348	328	149	163	50	54	26	1635
Jan 2004 - Dec 2004	510	343	311	139	178	58	35	9	1583
% change	1.4	1.5	5.5	7.2	-8.4	-13.8	54.3	188.9	3.3
12-months to date									
Jan 2005 - Dec 2005	517	348	328	149	163	50	54	26	1635
Jan 2004 - Dec 2004	510	343	311	139	178	58	35	9	1583
Difference	7	5	17	10	-15	-8	19	17	52
% change	1.4	1.5	5.5	7.2	-8.4	-13.8	54.3	188.9	3.3
Ave annual % change (a)									
Dec 2000 to Dec 2005	-3.0	-3.1	0.7	-2.1	-5.1	3.1	1.1	7.6	-2.1

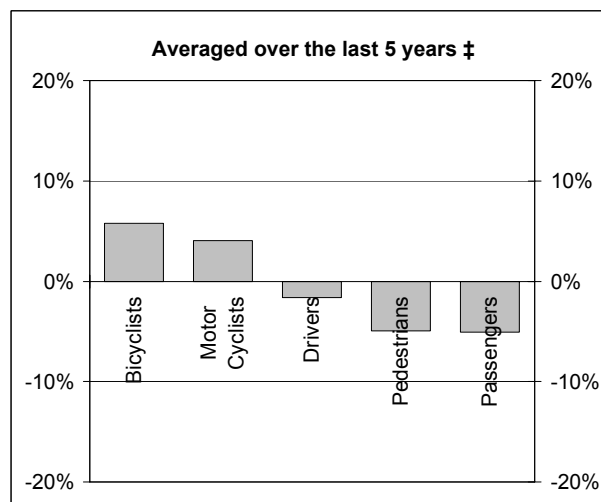
(a) This represents the average annual exponential change between the annual count of 5 years ago and the current annual count

DEATHS IN EACH ROAD USER GROUP

Percentage change in deaths in each road user group



† Percentage change between the 12-month periods of Jan 2004 - Dec 2004 and Jan 2005 - Dec 2005



‡ Average annual percentage change over each of the 12-month periods from Jan 2000 - Dec 2000 to Jan 2005 - Dec 2005

Road deaths by road user group and gender for twelve months ended December 2005 and twelve months ended December 2004

	Drivers	Passengers	Pedestrians	Motor cyclists (a)	Bicyclists	All road users (b)
Males						
Jan 2005 - Dec 2005	608	180	143	224	32	1191
Jan 2004 - Dec 2004	583	182	143	180	37	1127
% change	4.3	-1.1	0.0	24.4	-13.5	5.7
Females						
Jan 2005 - Dec 2005	178	164	80	9	9	441
Jan 2004 - Dec 2004	178	178	77	16	6	456
% change	0.0	-7.9	3.9	-43.8	50.0	-3.3
Persons (c)						
Jan 2005 - Dec 2005	786	347	223	233	41	1635
Jan 2004 - Dec 2004	761	360	220	196	43	1583
% change	3.3	-3.6	1.4	18.9	-4.7	3.3
Ave annual % change (d)						
Dec 2000 to Dec 2005	-1.6	-5.1	-4.9	4.1	5.8	-2.1

(a) Includes pillion passengers

(b) Includes road users not separately specified

(c) Includes road users with unstated gender

(d) This represents the average annual exponential change between the annual count of 5 years ago and the current annual count

DEATHS IN EACH ROAD USER GROUP - QUARTERLY REPORT

Road deaths by road user group and State/Territory for twelve months ended December 2005 and twelve months ended December 2004

	NSW	Vic	Qld	SA	WA	Tas	NT	ACT	Australia
Drivers									
Jan 2005 - Dec 2005	245	166	156	74	86	28	23	8	786
Jan 2004 - Dec 2004	229	171	146	80	86	27	17	5	761
% change	7.0	-2.9	6.8	-7.5	0.0	3.7	35.3	-	3.3
<i>Ave annual % change (a)</i>									
Dec 2000 to Dec 2005	-2.5	-3.2	-0.1	-4.1	-0.9	9.2	7.5	-	-1.6
Passengers									
Jan 2005 - Dec 2005	100	78	65	39	35	10	16	4	347
Jan 2004 - Dec 2004	122	77	73	22	40	18	8	0	360
% change	-18.0	1.3	-11.0	77.3	-12.5	-44.4	100.0	-	-3.6
<i>Ave annual % change (a)</i>									
Dec 2000 to Dec 2005	-7.3	-3.5	-4.5	1.1	-10.8	-1.9	4.2	-	-5.1
Pedestrians									
Jan 2005 - Dec 2005	96	49	37	12	15	1	8	5	223
Jan 2004 - Dec 2004	85	49	34	11	26	4	9	2	220
% change	12.9	0.0	8.8	9.1	-42.3	-75.0	-11.1	-	1.4
<i>Ave annual % change (a)</i>									
Dec 2000 to Dec 2005	-2.7	-3.6	-1.0	-9.7	-15.6	-35.6	-6.2	-	-4.9
Motor cyclists (b)									
Jan 2005 - Dec 2005	63	48	64	19	22	7	2	8	233
Jan 2004 - Dec 2004	58	37	48	21	23	7	0	2	196
% change	8.6	29.7	33.3	-9.5	-4.3	0.0	-	-	18.9
<i>Ave annual % change (a)</i>									
Dec 2000 to Dec 2005	0.3	0.9	14.2	3.5	-0.9	7.0	-16.7	-	4.1
Bicyclists									
Jan 2005 - Dec 2005	13	7	5	3	5	4	3	1	41
Jan 2004 - Dec 2004	16	9	9	3	3	2	1	0	43
All road users (c)									
Jan 2005 - Dec 2005	517	348	328	149	163	50	54	26	1635
Jan 2004 - Dec 2004	510	343	311	139	178	58	35	9	1583
% change	1.4	1.5	5.5	7.2	-8.4	-13.8	54.3	188.9	3.3
<i>Ave annual % change (a)</i>									
Dec 2000 to Dec 2005	-3.0	-3.1	0.7	-2.1	-5.1	3.1	1.1	7.6	-2.1

(a) This represents the average annual exponential change between the annual count of 5-years ago and the current annual count

(b) Includes pillion passengers

(c) Includes road users not separately classified

DEATHS IN EACH ROAD USER GROUP - QUARTERLY REPORT

Road deaths by road user group and age for twelve months ended
December 2005 and twelve months ended December 2004

	0-16 years	17-20 years	21-25 years	26-39 years	40-59 years	60+ years	All fatalities(d)
Drivers							
Jan 2005 - Dec 2005	5	95	112	227	191	153	786
Jan 2004 - Dec 2004	5	114	100	182	204	156	761
% change	0.0	-16.7	12.0	24.7	-6.4	-1.9	3.3
<i>Ave annual % change (a)</i>							
Dec 2000 to Dec 2005	-11.1	-5.3	2.1	-3.0	-1.4	0.7	-1.6
Passengers							
Jan 2005 - Dec 2005	72	64	43	45	49	68	347
Jan 2004 - Dec 2004	66	79	46	45	53	70	360
% change	9.1	-19.0	-6.5	0.0	-7.5	-2.9	-3.6
<i>Ave annual % change (a)</i>							
Dec 2000 to Dec 2005	-4.4	-6.0	-5.5	-6.2	-2.6	-7.0	-5.1
Pedestrians							
Jan 2005 - Dec 2005	20	21	16	40	38	85	223
Jan 2004 - Dec 2004	21	15	17	42	47	78	220
% change	-4.8	40.0	-5.9	-4.8	-19.1	9.0	1.4
<i>Ave annual % change (a)</i>							
Dec 2000 to Dec 2005	-15.0	-6.3	1.3	-2.8	-5.3	-3.6	-4.9
Motor cyclists (b)							
Jan 2005 - Dec 2005	3	18	48	90	59	15	233
Jan 2004 - Dec 2004	8	23	31	76	50	8	196
% change	-62.5	-21.7	54.8	18.4	18.0	87.5	18.9
<i>Ave annual % change (a)</i>							
Dec 2000 to Dec 2005	-5.6	-3.0	3.2	2.6	8.1	20.1	4.1
Bicyclists							
Jan 2005 - Dec 2005	8	2	1	9	12	9	41
Jan 2004 - Dec 2004	12	2	1	8	12	8	43
All road users (c)							
Jan 2005 - Dec 2005	108	200	221	413	351	330	1635
Jan 2004 - Dec 2004	112	233	196	353	368	320	1583
% change	-3.6	-14.2	12.8	17.0	-4.6	3.1	3.3
<i>Ave annual % change (a)</i>							
Dec 2000 to Dec 2005	-7.2	-5.5	-0.1	-2.0	-0.5	-1.5	-2.1

(a) This represents the average annual exponential change between the annual count of 5-years ago and the current annual count

(b) Includes pillion passengers

(c) Includes road users not separately classified

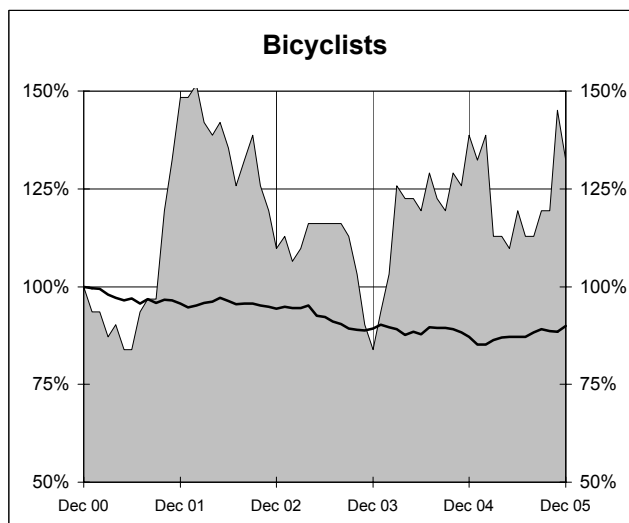
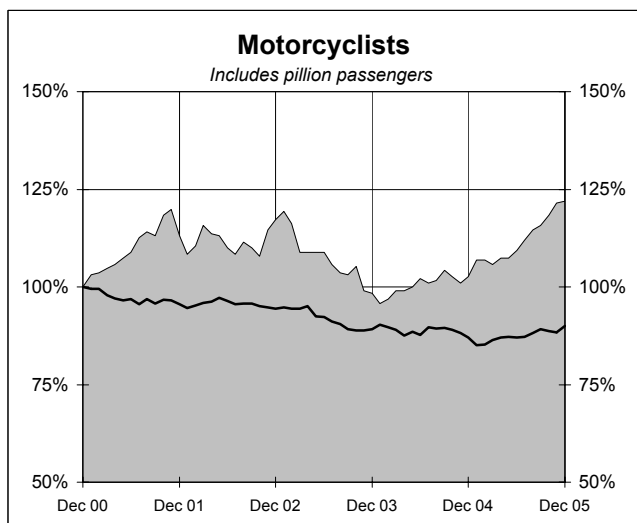
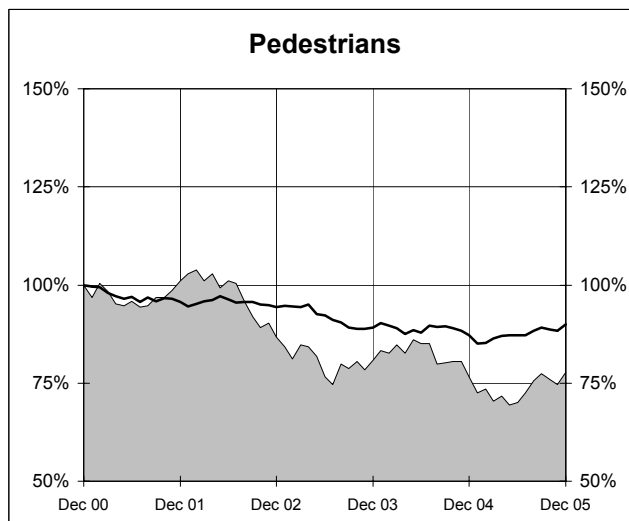
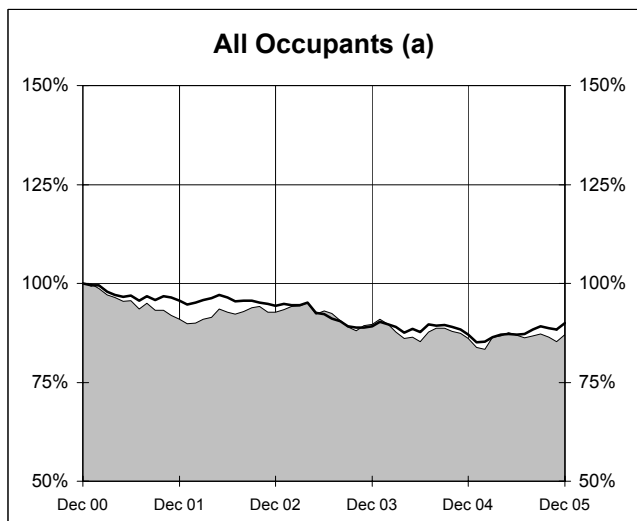
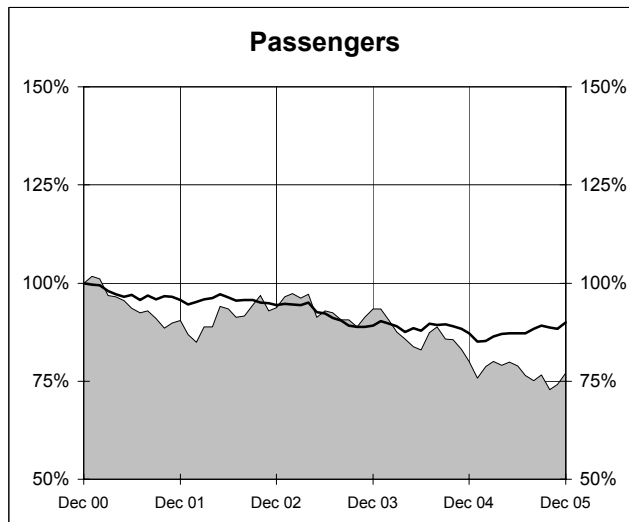
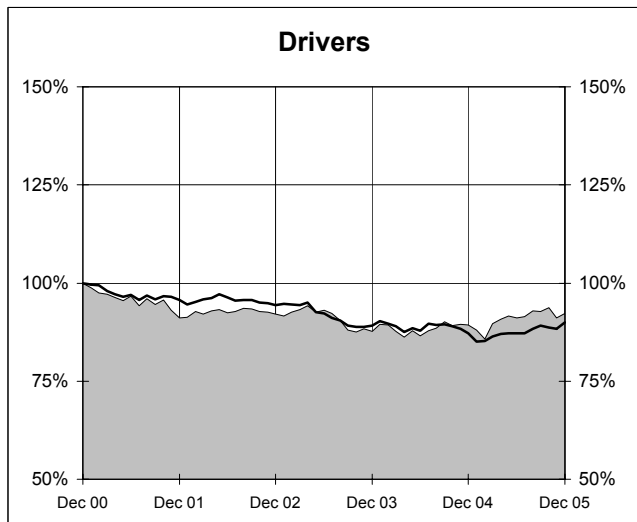
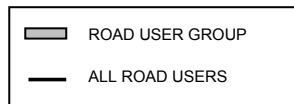
(d) Includes deaths with unstated age

- Percentage change not calculated

DEATHS IN EACH ROAD USER GROUP - TRENDS

Annual deaths in each road user group - last 5 years

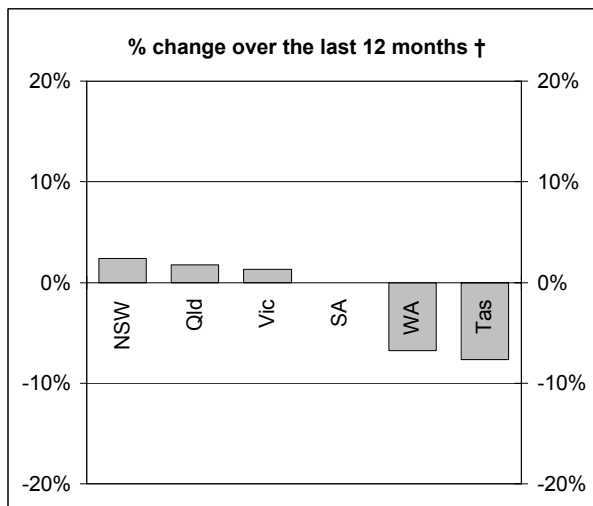
The number shown at each month represents the number of deaths in the preceding 12 months expressed as a percentage of the number of deaths in the 12 months to December 2000.



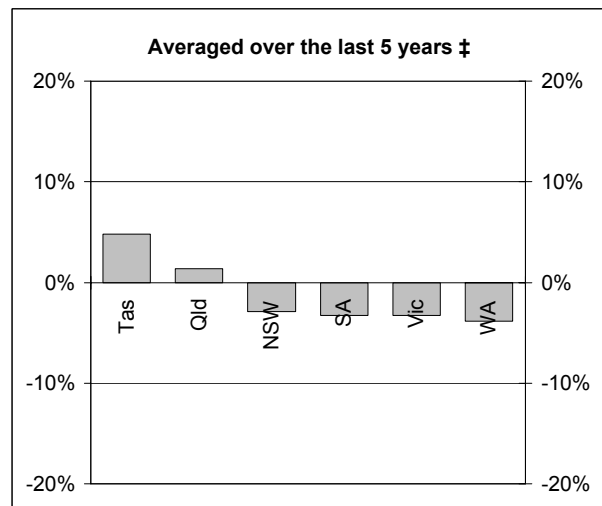
(a) Includes drivers and passengers

NUMBER OF FATAL ROAD CRASHES

Percentage change in fatal crashes in each State



† Percentage change between the 12-month periods of Jan 2004 - Dec 2004 and Jan 2005 - Dec 2005



‡ Average annual percentage change over each of the 12-month periods from Jan 2000 - Dec 2000 to Jan 2005 - Dec 2005

Fatal crashes by State/Territory for month, year to date and twelve months - period ended December 2005 and period ended December 2004

	NSW	Vic	Qld	SA	WA	Tas	NT	ACT	Australia
Current month									
Dec 2005	34	33	34	10	14	6	4	1	136
Dec 2004	38	22	25	9	17	2	3	0	116
% change	-10.5	50.0	36.0	11.1	-17.6	200.0	33.3	-	17.2
Year to date									
Jan 2005 - Dec 2005	469	316	294	128	151	48	50	25	1481
Jan 2004 - Dec 2004	458	312	289	128	162	52	34	9	1444
% change	2.4	1.3	1.7	0.0	-6.8	-7.7	47.1	177.8	2.6
12 months to date									
Jan 2005 - Dec 2005	469	316	294	128	151	48	50	25	1481
Jan 2004 - Dec 2004	458	312	289	128	162	52	34	9	1444
% change	2.4	1.3	1.7	0.0	-6.8	-7.7	47.1	177.8	2.6
Ave annual % change (a)									
Dec 2000 to Dec 2005	-2.9	-3.3	1.3	-3.3	-3.9	4.8	0.8	9.3	-1.9

(a) This represents the average annual exponential change between the annual count of 5 years ago and the current annual count

FATAL CRASHES INVOLVING TRUCKS AND BUSES

Fatal crashes and deaths involving articulated trucks and buses -
twelve months ended December 2005 and twelve months ended December 2004

	NSW	Vic	Qld	SA	WA	Tas	NT	ACT	Australia
--	-----	-----	-----	----	----	-----	----	-----	-----------

FATAL CRASHES INVOLVING ARTICULATED TRUCKS

Number of crashes

Jan 2005 - Dec 2005	47	28	27	11	11	5	1	0	130
Jan 2004 - Dec 2004	57	35	13	9	16	4	1	0	135
									(-3.7%)

Number of deaths

Jan 2005 - Dec 2005	53	32	35	13	13	5	1	0	152
Jan 2004 - Dec 2004	64	37	13	11	17	4	1	0	147
									(+3.4%)

Note: Data on heavy rigid trucks not currently available

FATAL CRASHES INVOLVING BUSES

Number of crashes

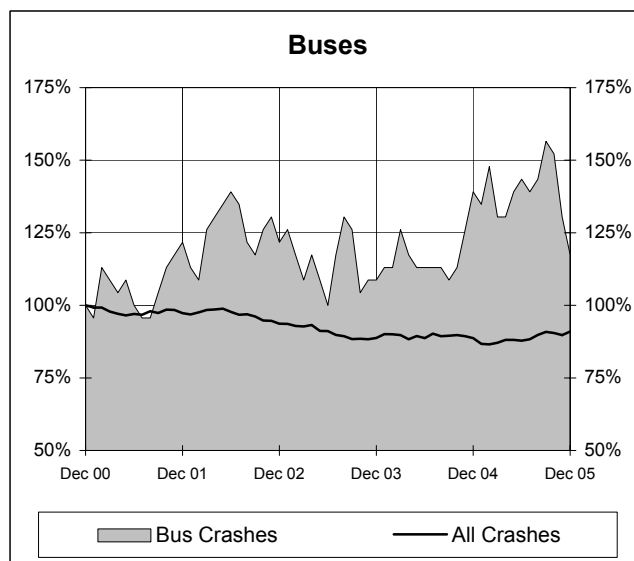
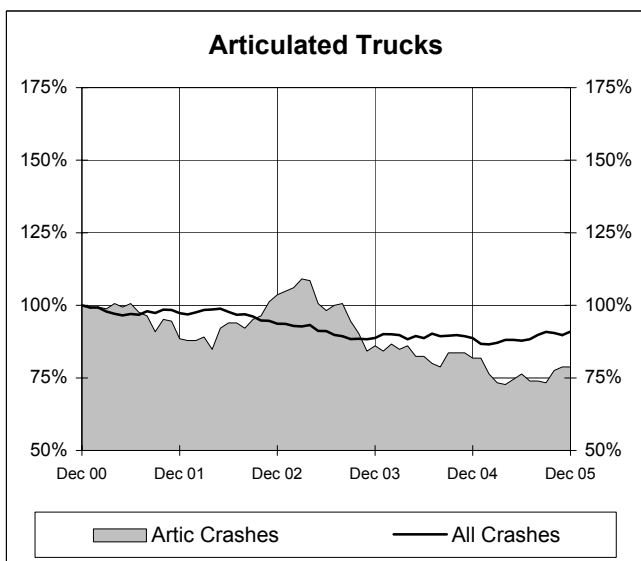
Jan 2005 - Dec 2005	15	4	7	0	1	0	0	0	27
Jan 2004 - Dec 2004	15	6	6	4	0	0	0	1	32
									(-15.6%)

Number of deaths

Jan 2005 - Dec 2005	21	5	9	0	1	0	0	0	36
Jan 2004 - Dec 2004	15	6	6	4	0	0	0	1	32
									(+12.5%)

Annual count of fatal crashes involving articulated trucks and buses - last 5 years

The number shown at each month represents the number of fatal crashes in the preceding 12 months expressed as a percentage of the number of fatal crashes in the 12 months to December 2000.



TIME SERIES - QUARTERLY REPORT

Road deaths by road user group, 1991 to 2004

	<i>Drivers</i>	<i>Passengers</i>	<i>Pedestrians</i>	<i>Motor cyclists (a)</i>	<i>Bicyclists (b)</i>	<i>All road users (c)</i>
1991	910	554	343	248	58	2113
1992	815	570	350	197	41	1974
1993	859	513	331	203	45	1953
1994	809	501	367	190	59	1928
1995	874	491	398	204	48	2017
1996	869	499	351	193	57	1970
1997	776	431	328	177	52	1767
1998	741	468	318	181	44	1755
1999	820	428	299	176	40	1764
2000	852	450	287	191	31	1817
2001	776	407	290	216	46	1737
2002	785	422	249	224	34	1715
2003	747	420	232	188	26	1621
2004	761	360	220	196	43	1583
2005	786	347	223	233	41	1635

(a) Includes pillion passengers.

(b) From 1989, includes pedal cycle passengers.

(c) Includes road users not separately classified.

Road deaths by State/Territory, 1991 to 2004

	<i>NSW</i>	<i>Vic</i>	<i>Qld</i>	<i>SA</i>	<i>WA</i>	<i>Tas</i>	<i>NT</i>	<i>ACT</i>	<i>Australia</i>
1991	663	503	395	184	207	77	67	17	2113
1992	649	396	416	165	200	74	54	20	1974
1993	581	435	396	218	209	58	44	12	1953
1994	646	377	418	159	211	59	41	17	1928
1995	620	418	456	181	209	57	61	15	2017
1996	581	417	385	181	247	64	72	23	1970
1997	576	377	360	148	197	32	60	17	1767
1998	556	390	279	168	223	48	69	22	1755
1999	577	383	314	151	218	53	49	19	1764
2000	603	407	317	166	212	43	51	18	1817
2001	524	444	324	153	165	61	50	16	1737
2002	561	397	322	154	179	37	55	10	1715
2003	539	330	310	157	180	41	53	11	1621
2004	510	343	311	139	178	58	35	9	1583
2005	517	348	328	149	163	50	54	26	1635

DEATH RATES - QUARTERLY REPORT

Road death rates by State/Territory

	<i>NSW</i>	<i>Vic</i>	<i>Qld</i>	<i>SA</i>	<i>WA</i>	<i>Tas</i>	<i>NT</i>	<i>ACT</i>	<i>Australia</i>
Per capita (a)									
2004	7.58	6.90	8.01	9.06	8.98	12.03	17.51	2.78	7.87
1999	9.00	8.17	8.97	10.08	11.79	11.24	25.42	6.08	9.32
Per vehicle (b)									
2004	1.26	0.96	1.17	1.27	1.20	1.66	3.30	0.42	1.17
1999	1.57	1.17	1.36	1.46	1.62	1.61	4.75	0.96	1.44

(a) Annual deaths per 100,000 population: 2004 at June 30 (preliminary data); 1999 at June 30 (revised data) taken from ABS catalogue 3201.0

(b) Annual deaths per 10,000 registered motor vehicles: 2004 at Mar 31; 1999 at Oct 31 taken from ABS catalogue 9309.0.

CHARACTERISTICS OF FATAL CRASHES

Proportion (per cent) of fatal crashes by speed limit, crash type, time of day, and time of week - two years ended December 2005 and two years ended December 2000

	<i>Speed limit (km/h) (a)</i>			<i>Time of Day</i>	
	<i>Up to 60</i>	<i>65-95</i>	<i>100+</i>	<i>Day time</i>	<i>Night-time (b)</i>
<i>Jan 2004 - Dec 2005</i>	32.3	21.9	45.8	55.1	44.9
<i>Jan 1999 - Dec 2000</i>	33.2	21.8	45.0	55.2	44.8

	<i>Crash Type</i>			<i>Time of week</i>	
	<i>Pedestrian crash</i>	<i>Other single veh. crash</i>	<i>Other multiple veh. crash</i>	<i>Week day</i>	<i>Week-end (c)</i>
<i>Jan 2004 - Dec 2005</i>	15.0	44.3	40.6	58.1	41.9
<i>Jan 1999 - Dec 2000</i>	18.4	39.6	42.0	60.2	39.8

(a) Excludes ACT

(b) 6:00 pm to 5:59 am

(c) 6:00 pm Friday to 5:59 am Monday