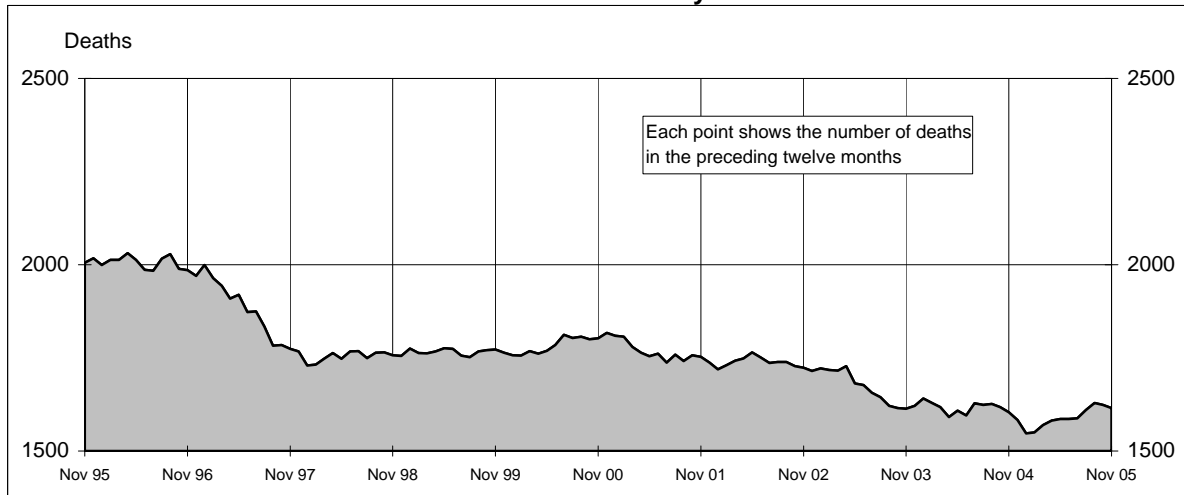
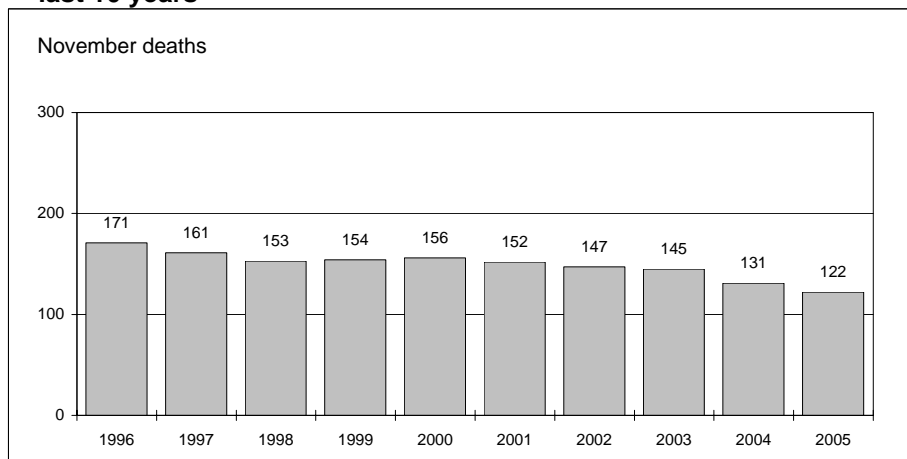




Australian road deaths for 12 months to date - last 10 years



Australian road deaths for November - last 10 years



Inquiries

For further information about data in this bulletin, contact:

The Editor
Transport Safety Statistics Unit
Australian Transport Safety Bureau
PO Box 967,
Civic Square, ACT 2608

Email: stats@atsb.gov.au
Internet: www.atsb.gov.au

Data Sources

The data presented here are obtained from the following sources:

Roads and Traffic Authority, NSW
Vicroads
Queensland Transport
South Australian Police Department
Western Australian Police Service
Department of Infrastructure,
Energy and Resources, Tasmania
Northern Territory Police,
Fire & Emergency Services
Department of Urban Services, ACT

Note

Road death statistics for recent months are preliminary and subject to revision. They include any deaths occurring within 30 days of a crash stemming from injuries received in the crash.

© Australian Government

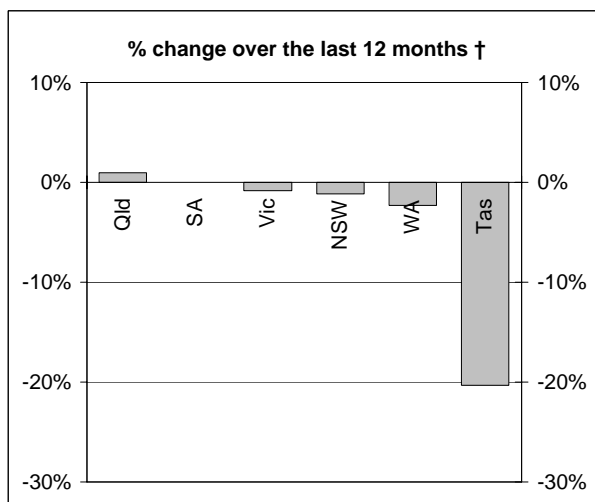
This month's key figures

The total number of road deaths in November 2005 was 122
- this is a 6.9% decrease from the November 2004 figure.

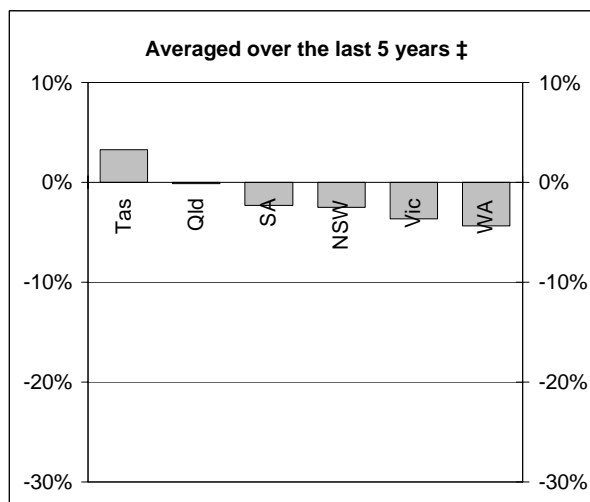
The number of road deaths in 2005 to the end of November is 1,488
- this is a 2.2% increase over the same 11 month period in 2004.

NUMBER OF ROAD CRASH DEATHS

Percentage change in road deaths in each State



† Percentage change between the 12-month periods of Dec 2003 - Nov 2004 and Dec 2004 - Nov 2005



‡ Average annual percentage change over each of the 12-month periods from Dec 1999 - Nov 2000 to Dec 2004 - Nov 2005

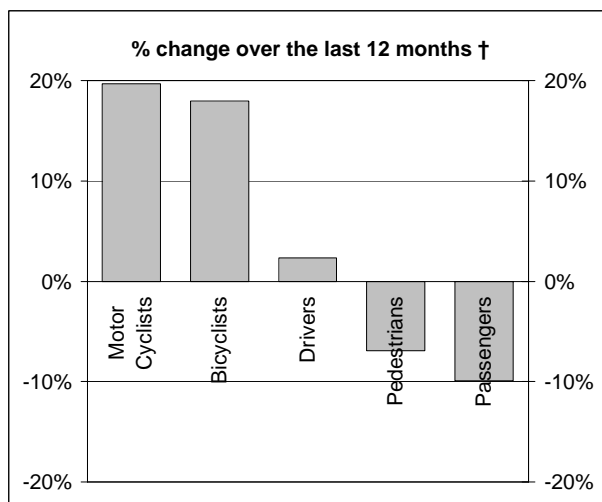
Road deaths by State/Territory for month, year to date, and twelve months - period ended November 2005 and period ended November 2004

	NSW	Vic	Qld	SA	WA	Tas	NT	ACT	Australia
Current month									
Nov 2005	36	17	28	14	13	7	5	2	122
Nov 2004	47	25	28	7	10	9	3	2	131
% change	-23.4	-32.0	0.0	100.0	30.0	-22.2	66.7	0.0	-6.9
Year to date									
Jan 2005 - Nov 2005	476	317	290	137	148	45	50	25	1488
Jan 2004 - Nov 2004	470	316	285	130	159	56	31	9	1456
% change	1.3	0.3	1.8	5.4	-6.9	-19.6	61.3	177.8	2.2
12-months to date									
Dec 2004 - Nov 2005	516	344	316	146	167	47	54	25	1615
Dec 2003 - Nov 2004	522	347	313	146	171	59	35	11	1604
Difference	-6	-3	3	0	-4	-12	19	14	11
% change	-1.1	-0.9	1.0	0.0	-2.3	-20.3	54.3	127.3	0.7
Ave annual % change (a)									
Nov 2000 to Nov 2005	-2.5	-3.7	-0.1	-2.3	-4.4	3.3	1.6	3.5	-2.2

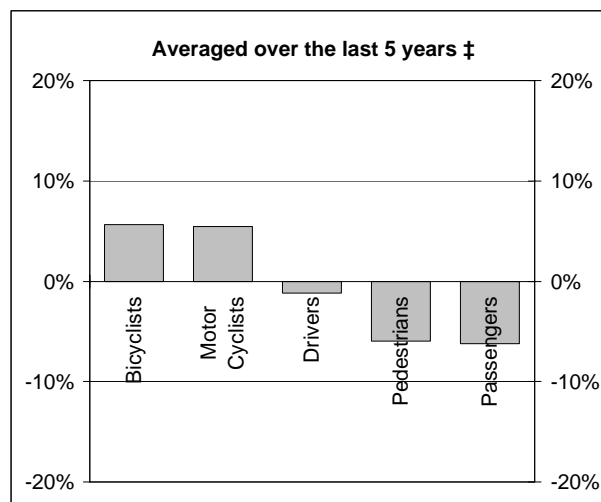
(a) This represents the average annual exponential change between the annual count of 5 years ago and the current annual count

DEATHS IN EACH ROAD USER GROUP

Percentage change in deaths in each road user group



† Percentage change between the 12-month periods of Dec 2003 - Nov 2004 and Dec 2004 - Nov 2005



‡ Average annual percentage change over each of the 12-month periods from Dec 1999 - Nov 2000 to Dec 2004 - Nov 2005

Road deaths by road user group and gender for twelve months ended November 2005 and twelve months ended November 2004

	Drivers	Passengers	Pedestrians	Motor cyclists (a)	Bicyclists	All road users (b)
Males						
Dec 2004 - Nov 2005	617	171	138	222	38	1190
Dec 2003 - Nov 2004	579	189	150	178	33	1131
% change	6.6	-9.5	-8.0	24.7	15.2	5.2
Females						
Dec 2004 - Nov 2005	164	164	77	9	8	423
Dec 2003 - Nov 2004	184	185	81	15	6	473
% change	-10.9	-11.4	-4.9	-40.0	33.3	-10.6
Persons (c)						
Dec 2004 - Nov 2005	781	337	215	231	46	1615
Dec 2003 - Nov 2004	763	374	231	193	39	1604
% change	2.4	-9.9	-6.9	19.7	17.9	0.7
Ave annual % change (d)						
Nov 2000 to Nov 2005	-1.2	-6.2	-5.9	5.5	5.6	-2.2

(a) Includes pillion passengers

(b) Includes road users not separately specified

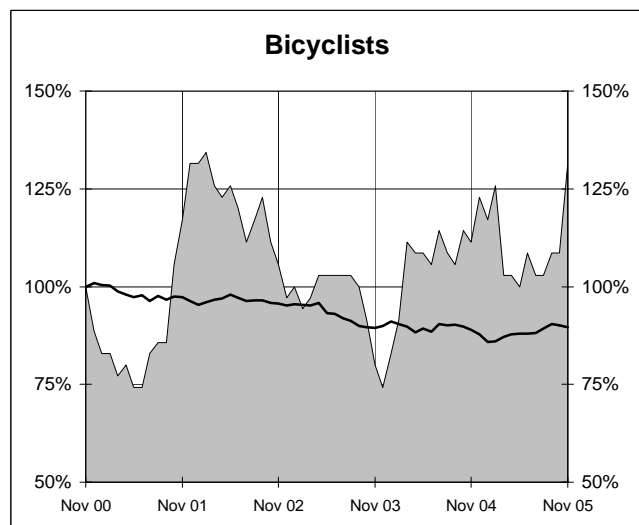
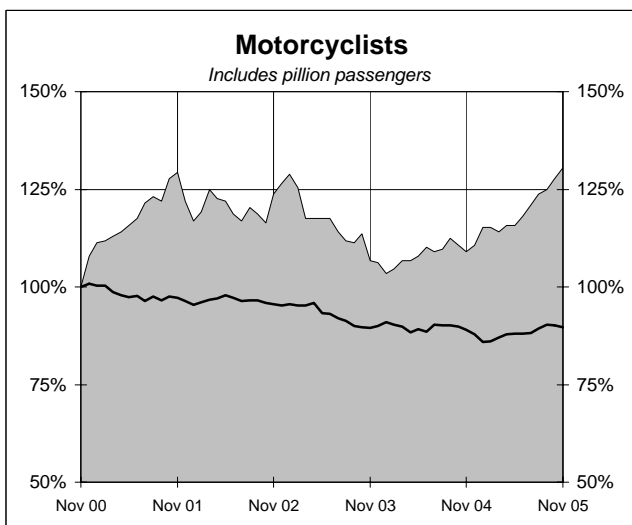
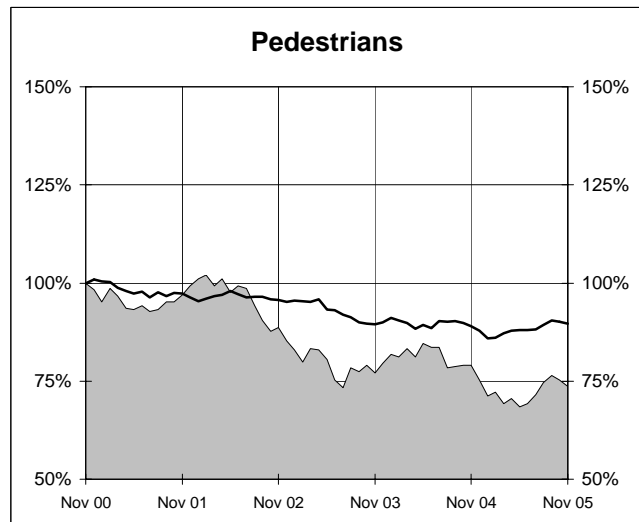
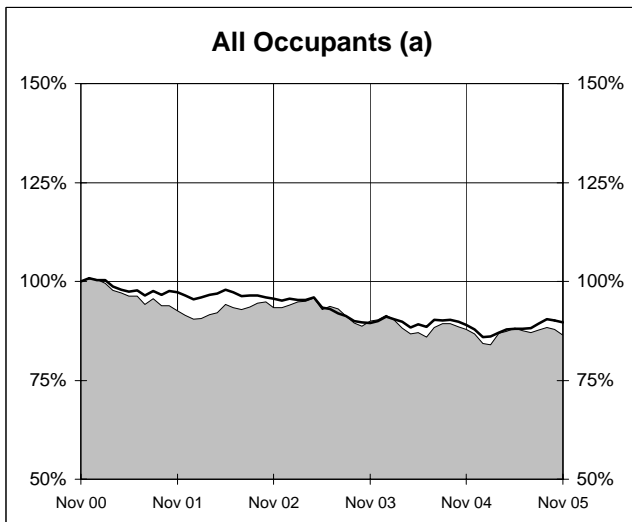
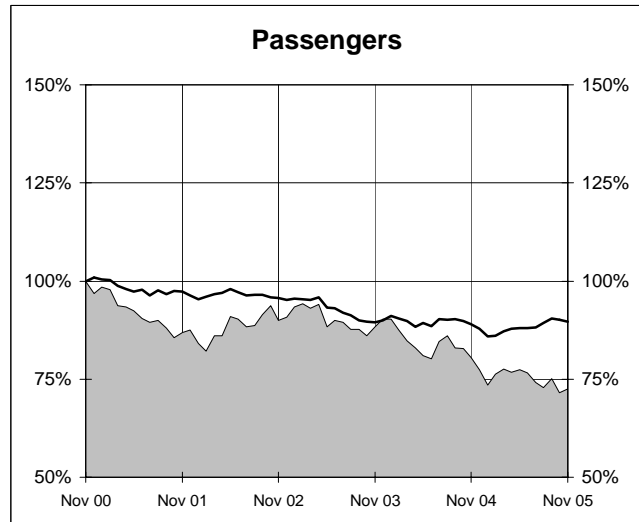
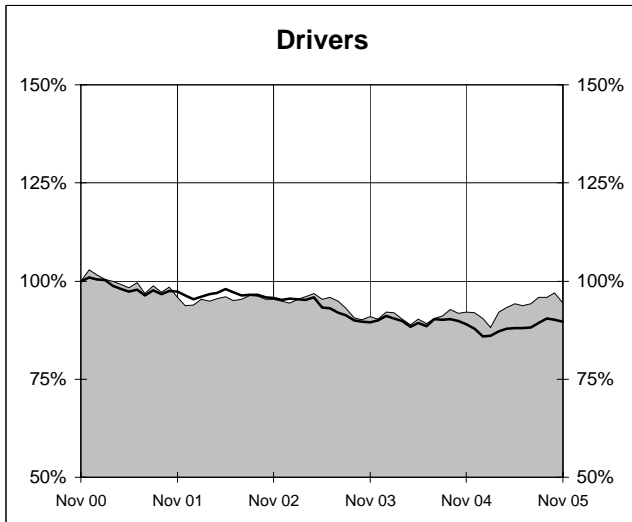
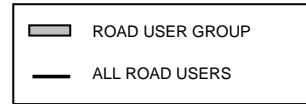
(c) Includes road users with unstated gender

(d) This represents the average annual exponential change between the annual count of 5 years ago and the current annual count

DEATHS IN EACH ROAD USER GROUP - TRENDS

Annual deaths in each road user group - last 5 years

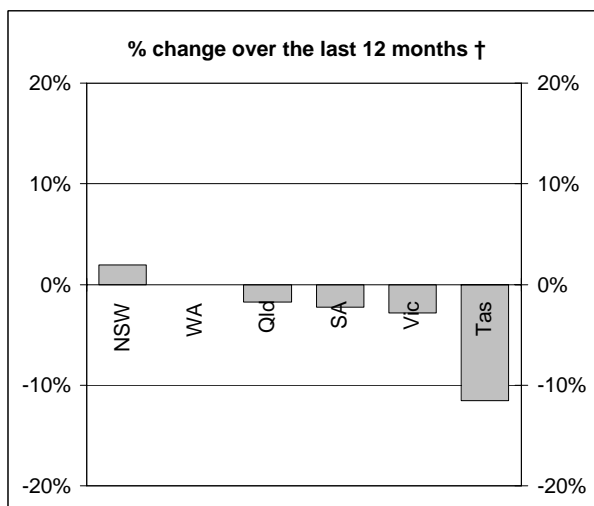
The number shown at each month represents the number of deaths in the preceding 12 months expressed as a percentage of the number of deaths in the 12 months to November 2000.



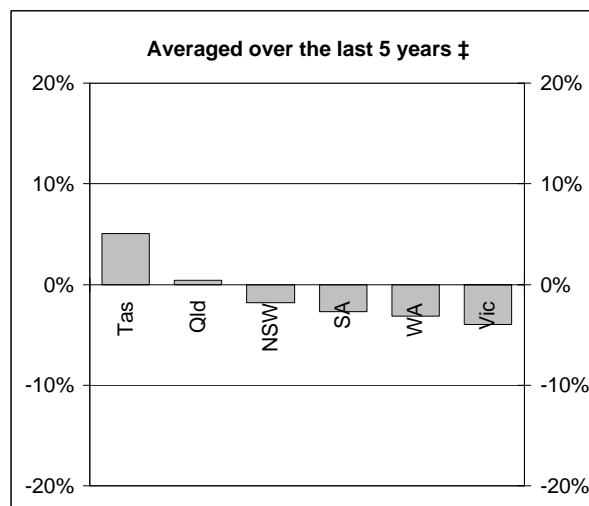
(a) Includes drivers and passengers

NUMBER OF FATAL ROAD CRASHES

Percentage change in fatal crashes in each State



† Percentage change between the 12-month periods of Dec 2003 - Nov 2004 and Dec 2004 - Nov 2005



‡ Average annual percentage change over each of the 12-month periods from Dec 1999 - Nov 2000 to Dec 2004 - Nov 2005

Fatal crashes by State/Territory for month, year to date and twelve months - period ended November 2005 and period ended November 2004

	NSW	Vic	Qld	SA	WA	Tas	NT	ACT	Australia
Current month									
Nov 2005	32	16	22	12	12	7	4	2	107
Nov 2004	44	23	26	7	10	8	3	2	123
% change	-27.3	-30.4	-15.4	71.4	20.0	-12.5	33.3	0.0	-13.0
Year to date									
Jan 2005 - Nov 2005	437	286	258	120	137	44	46	24	1352
Jan 2004 - Nov 2004	420	290	264	119	145	50	31	9	1328
% change	4.0	-1.4	-2.3	0.8	-5.5	-12.0	48.4	166.7	1.8
12 months to date									
Dec 2004 - Nov 2005	475	308	283	129	154	46	49	24	1468
Dec 2003 - Nov 2004	466	317	288	132	154	52	35	11	1455
% change	1.9	-2.8	-1.7	-2.3	0.0	-11.5	40.0	118.2	0.9
Ave annual % change (a)									
Nov 2000 to Nov 2005	-1.8	-4.0	0.4	-2.7	-3.2	5.0	1.7	7.1	-1.7

(a) This represents the average annual exponential change between the annual count of 5 years ago and the current annual count

FATAL CRASHES INVOLVING TRUCKS AND BUSES

Fatal crashes and deaths involving articulated trucks and buses -
twelve months ended November 2005 and twelve months ended November 2004

	NSW	Vic	Qld	SA	WA	Tas	NT	ACT	Australia
--	-----	-----	-----	----	----	-----	----	-----	-----------

FATAL CRASHES INVOLVING ARTICULATED TRUCKS

Number of crashes

Dec 2004 - Nov 2005	46	29	26	11	12	4	1	0	129
Dec 2003 - Nov 2004	58	36	14	9	16	4	1	0	138
									(-6.5%)

Number of deaths

Dec 2004 - Nov 2005	51	33	34	13	14	4	1	0	150
Dec 2003 - Nov 2004	66	37	14	11	17	4	1	0	150
									(+0.0%)

Note: Data on heavy rigid trucks not currently available

FATAL CRASHES INVOLVING BUSES

Number of crashes

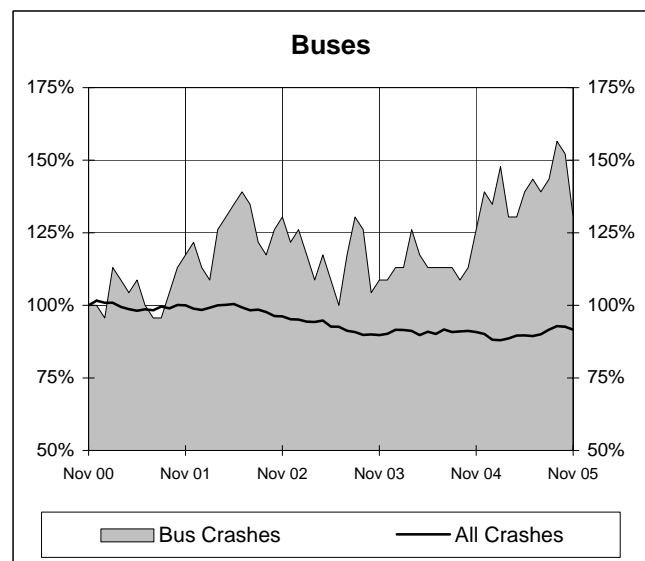
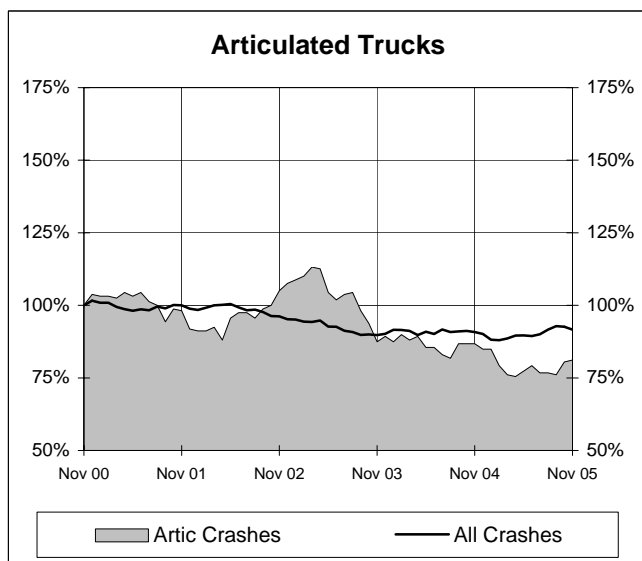
Dec 2004 - Nov 2005	17	5	7	0	1	0	0	0	30
Dec 2003 - Nov 2004	13	5	6	4	0	0	0	1	29
									(+3.4%)

Number of deaths

Dec 2004 - Nov 2005	23	6	9	0	1	0	0	0	39
Dec 2003 - Nov 2004	13	5	6	4	0	0	0	1	29
									(+34.5%)

Annual count of fatal crashes involving articulated trucks and buses - last 5 years

The number shown at each month represents the number of fatal crashes in the preceding 12 months expressed as a percentage of the number of fatal crashes in the 12 months to November 2000.



CHARACTERISTICS OF FATAL CRASHES

Proportion (per cent) of fatal crashes by speed limit, crash type, time of day, and time of week - two years ended November 2005 and two years ended November 2000

	<i>Speed limit (km/h) (a)</i>			<i>Time of Day</i>	
	<i>Up to 60</i>	<i>65-95</i>	<i>100+</i>	<i>Day time</i>	<i>Night-time (b)</i>
<i>Dec 2003 - Nov 2005</i>	32.3	21.9	45.8	54.8	45.2
<i>Dec 1998 - Nov 2000</i>	32.9	22.0	45.1	55.4	44.6

	<i>Crash Type</i>			<i>Time of week</i>	
	<i>Pedestrian crash</i>	<i>Other single veh. crash</i>	<i>Other multiple veh. crash</i>	<i>Week day</i>	<i>Week- end (c)</i>
<i>Dec 2003 - Nov 2005</i>	15.1	44.5	40.4	57.8	42.2
<i>Dec 1998 - Nov 2000</i>	18.9	39.2	41.8	60.2	39.8

(a) Excludes ACT

(b) 6:00 pm to 5:59 am

(c) 6:00 pm Friday to 5:59 am Monday