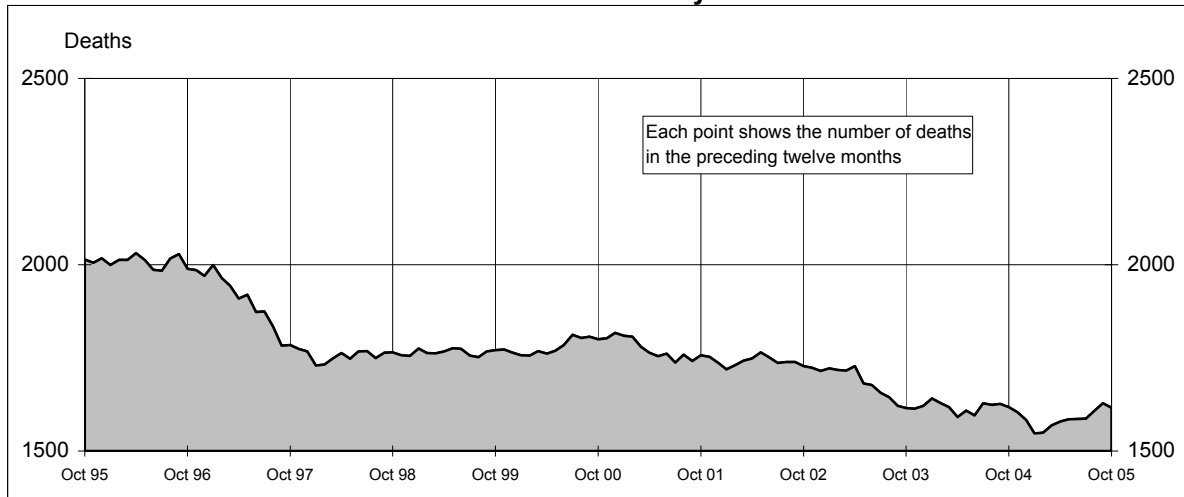
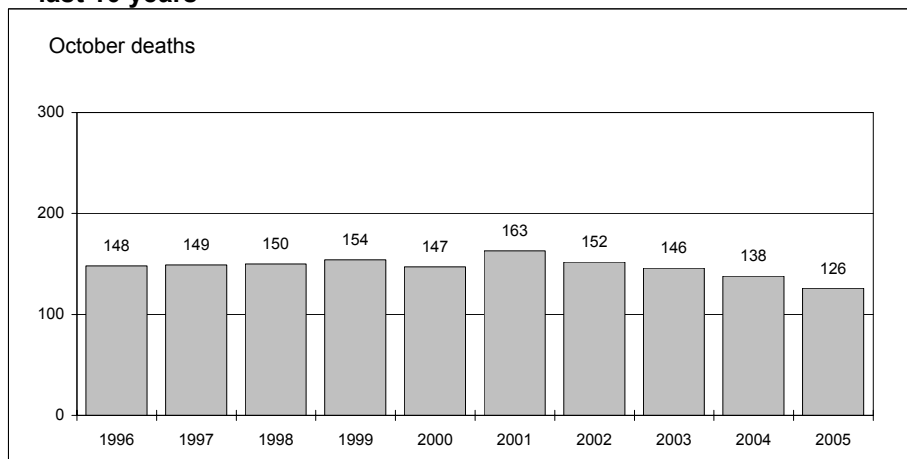




Australian road deaths for 12 months to date - last 10 years



Australian road deaths for October - last 10 years



Inquiries

For further information about data in this bulletin, contact:

The Editor
Transport Safety Statistics Unit
Australian Transport Safety Bureau
PO Box 967,
Civic Square, ACT 2608

Email: stats@atsb.gov.au
Internet: www.atsb.gov.au

Data Sources

The data presented here are obtained from the following sources:

Roads and Traffic Authority, NSW
Vicroads

Queensland Transport
South Australian Police Department
Western Australian Police Service
Department of Infrastructure,
Energy and Resources, Tasmania
Northern Territory Police,
Fire & Emergency Services
Department of Urban Services, ACT

Note

Road death statistics for recent months are preliminary and subject to revision. They include any deaths occurring within 30 days of a crash stemming from injuries received in the crash.

© Australian Government

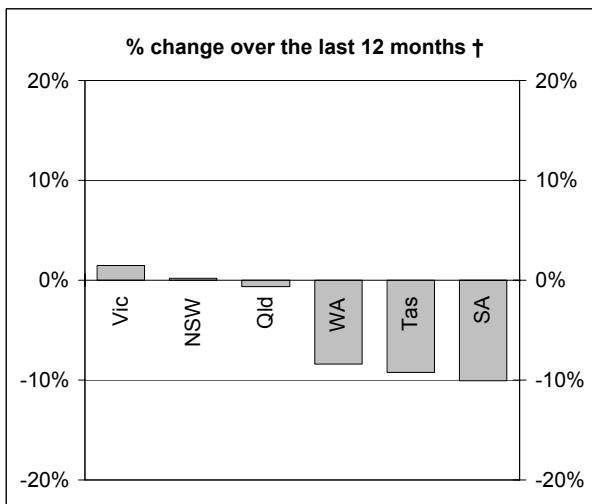
This month's key figures

The total number of road deaths in October 2005 was 126
- this is a 8.7% decrease from the October 2004 figure.

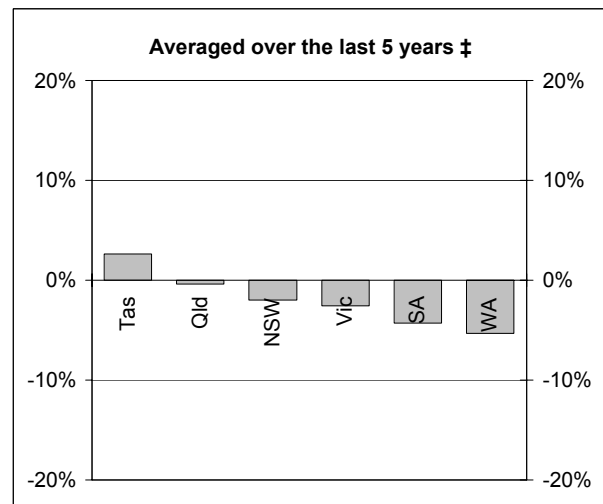
The number of road deaths in 2005 to the end of October is 1,358
- this is a 2.5% increase over the same 10 month period in 2004.

NUMBER OF ROAD CRASH DEATHS

Percentage change in road deaths in each State



† Percentage change between the 12-month periods of Nov 2003 - Oct 2004 and Nov 2004 - Oct 2005



‡ Average annual percentage change over each of the 12-month periods from Nov 1999 - Oct 2000 to Nov 2004 - Oct 2005

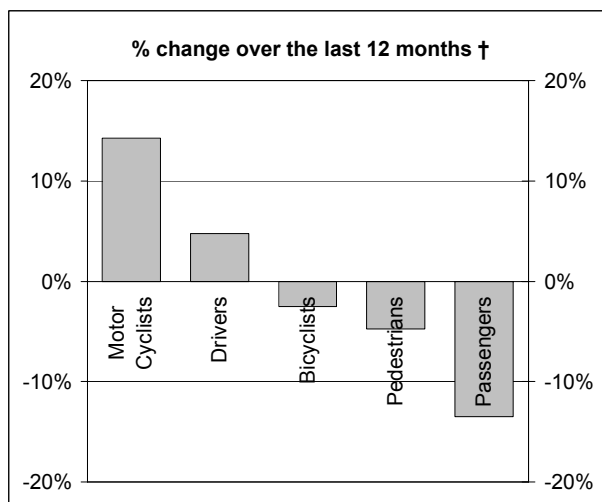
Road deaths by State/Territory for month, year to date, and twelve months - period ended October 2005 and period ended October 2004

	NSW	Vic	Qld	SA	WA	Tas	NT	ACT	Australia
Current month									
Oct 2005	38	33	29	9	8	4	3	2	126
Oct 2004	43	28	33	15	13	4	2	0	138
% change	-11.6	17.9	-12.1	-40.0	-38.5	0.0	50.0	-	-8.7
Year to date									
Jan 2005 - Oct 2005	441	299	260	118	134	38	45	23	1358
Jan 2004 - Oct 2004	423	291	257	123	149	47	28	7	1325
% change	4.3	2.7	1.2	-4.1	-10.1	-19.1	60.7	228.6	2.5
12-months to date									
Nov 2004 - Oct 2005	528	351	314	134	163	49	52	25	1616
Nov 2003 - Oct 2004	527	346	316	149	178	54	38	10	1618
Difference	1	5	-2	-15	-15	-5	14	15	-2
% change	0.2	1.4	-0.6	-10.1	-8.4	-9.3	36.8	150.0	-0.1
Ave annual % change (a)									
Oct 2000 to Oct 2005	-2.0	-2.6	-0.4	-4.3	-5.3	2.6	1.2	1.7	-2.1

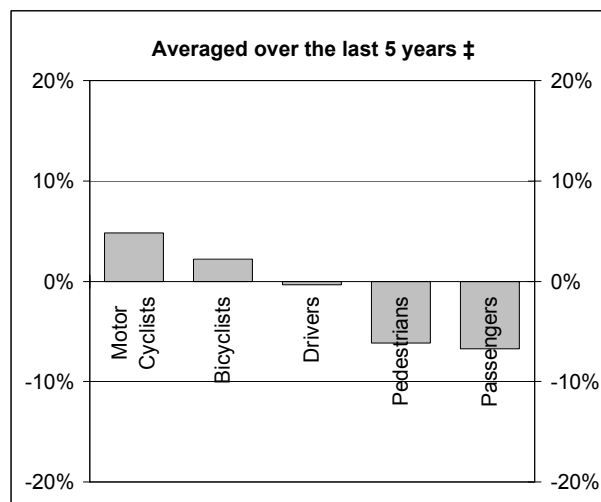
(a) This represents the average annual exponential change between the annual count of 5 years ago and the current annual count

DEATHS IN EACH ROAD USER GROUP

Percentage change in deaths in each road user group



† Percentage change between the 12-month periods of Nov 2003 - Oct 2004 and Nov 2004 - Oct 2005



‡ Average annual percentage change over each of the 12-month periods from Nov 1999 - Oct 2000 to Nov 2004 - Oct 2005

Road deaths by road user group and gender for twelve months ended October 2005 and twelve months ended October 2004

	Drivers	Passengers	Pedestrians	Motor cyclists (a)	Bicyclists	All road users (b)
Males						
Nov 2004 - Oct 2005	621	172	140	214	33	1183
Nov 2003 - Oct 2004	580	199	154	180	34	1151
% change	7.1	-13.6	-9.1	18.9	-2.9	2.8
Females						
Nov 2004 - Oct 2005	175	161	80	10	6	433
Nov 2003 - Oct 2004	180	186	77	16	6	467
% change	-2.8	-13.4	3.9	-37.5	0.0	-7.3
Persons (c)						
Nov 2004 - Oct 2005	796	333	220	224	39	1616
Nov 2003 - Oct 2004	760	385	231	196	40	1618
% change	4.7	-13.5	-4.8	14.3	-2.5	-0.1
Ave annual % change (d)						
Oct 2000 to Oct 2005	-0.3	-6.7	-6.1	4.8	2.2	-2.1

(a) Includes pillion passengers

(b) Includes road users not separately specified

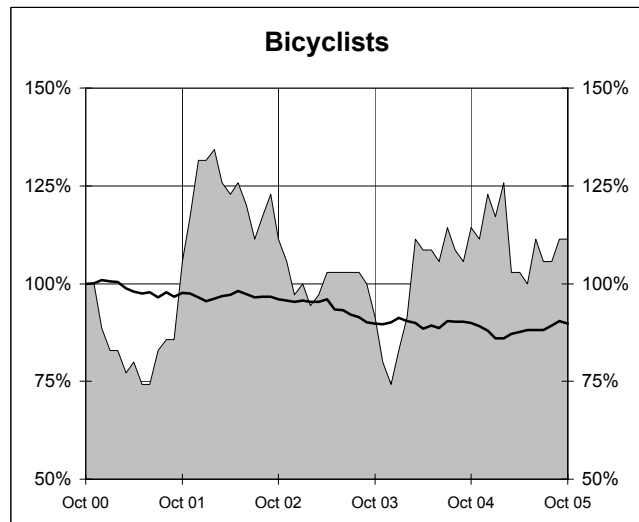
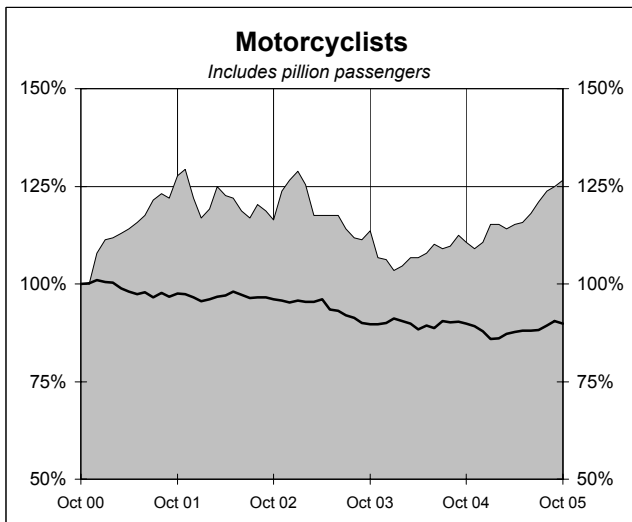
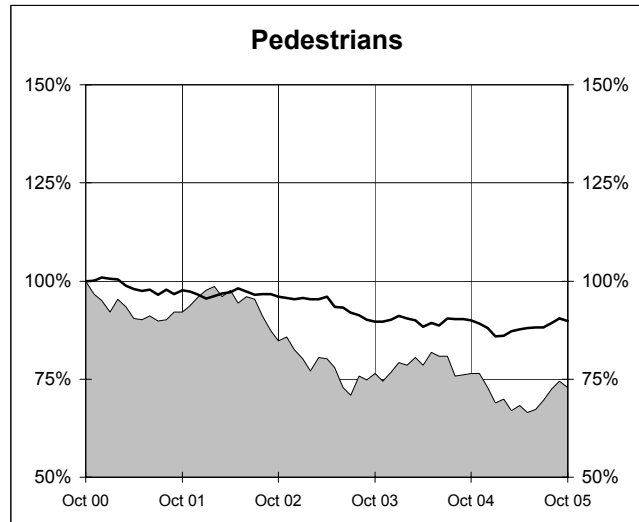
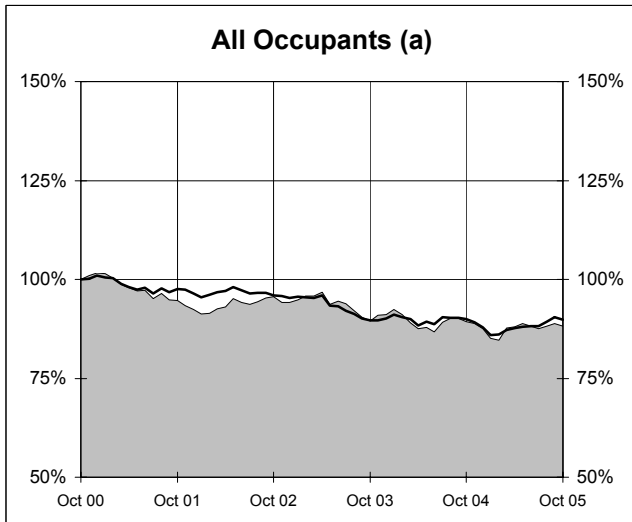
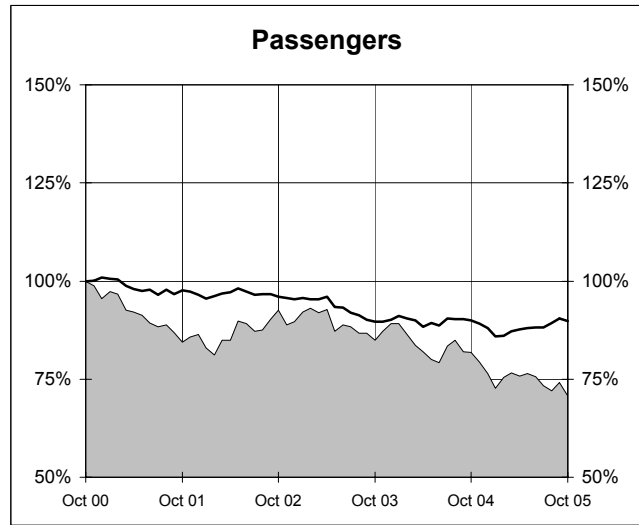
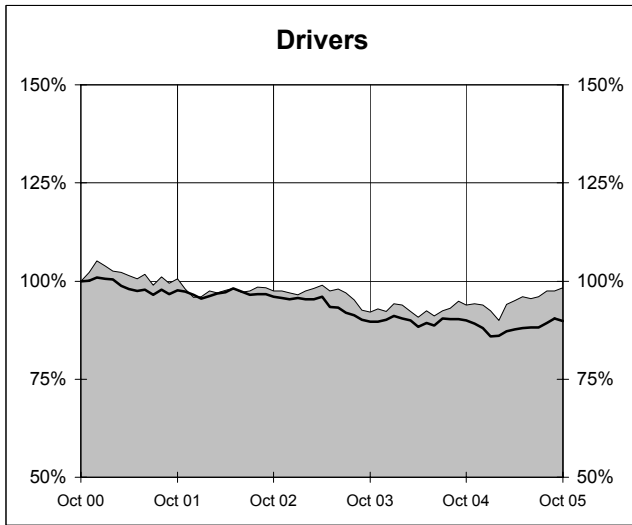
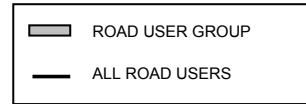
(c) Includes road users with unstated gender

(d) This represents the average annual exponential change between the annual count of 5 years ago and the current annual count

DEATHS IN EACH ROAD USER GROUP - TRENDS

Annual deaths in each road user group - last 5 years

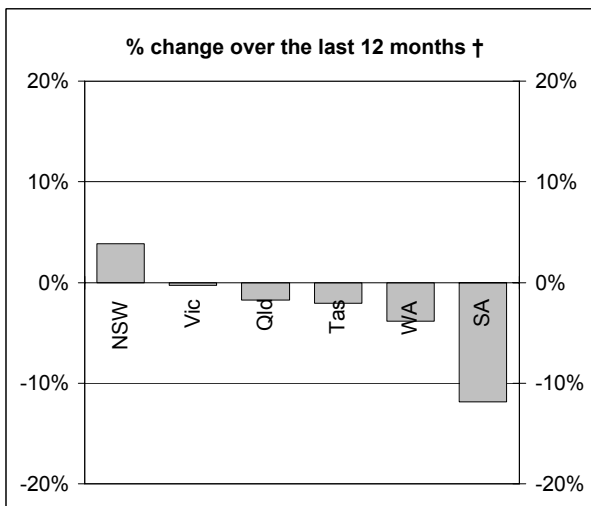
The number shown at each month represents the number of deaths in the preceding 12 months expressed as a percentage of the number of deaths in the 12 months to October 2000.



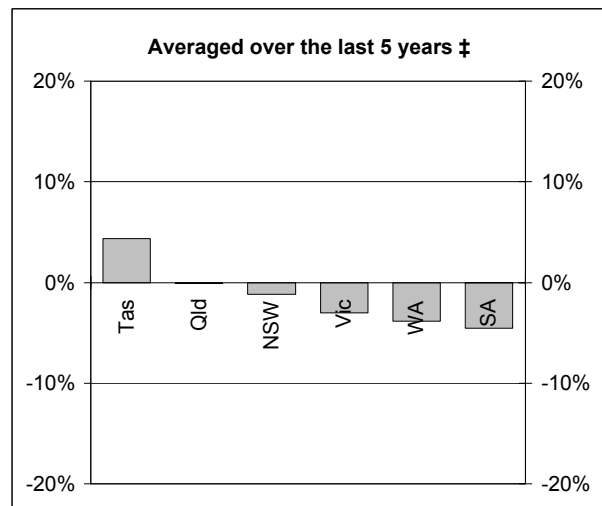
(a) Includes drivers and passengers

NUMBER OF FATAL ROAD CRASHES

Percentage change in fatal crashes in each State



† Percentage change between the 12-month periods of Nov 2003 - Oct 2004 and Nov 2004 - Oct 2005



‡ Average annual percentage change over each of the 12-month periods from Nov 1999 - Oct 2000 to Nov 2004 - Oct 2005

Fatal crashes by State/Territory for month, year to date and twelve months - period ended October 2005 and period ended October 2004

	NSW	Vic	Qld	SA	WA	Tas	NT	ACT	Australia
Current month									
Oct 2005	36	32	27	9	8	4	3	2	121
Oct 2004	40	27	31	15	12	4	2	0	131
% change	-10.0	18.5	-12.9	-40.0	-33.3	0.0	50.0	-	-7.6
Year to date									
Jan 2005 - Oct 2005	406	269	234	103	124	37	42	22	1237
Jan 2004 - Oct 2004	376	267	238	112	135	42	28	7	1205
% change	8.0	0.7	-1.7	-8.0	-8.1	-11.9	50.0	214.3	2.7
12 months to date									
Nov 2004 - Oct 2005	488	314	285	119	151	47	48	24	1476
Nov 2003 - Oct 2004	470	315	290	135	157	48	36	10	1461
% change	3.8	-0.3	-1.7	-11.9	-3.8	-2.1	33.3	140.0	1.0
Ave annual % change (a)									
Oct 2000 to Oct 2005	-1.2	-3.0	-0.1	-4.5	-3.9	4.3	1.8	4.8	-1.7

(a) This represents the average annual exponential change between the annual count of 5 years ago and the current annual count

FATAL CRASHES INVOLVING TRUCKS AND BUSES

Fatal crashes and deaths involving articulated trucks and buses -
twelve months ended October 2005 and twelve months ended October 2004

	NSW	Vic	Qld	SA	WA	Tas	NT	ACT	Australia
--	-----	-----	-----	----	----	-----	----	-----	-----------

FATAL CRASHES INVOLVING ARTICULATED TRUCKS

Number of crashes

Nov 2004 - Oct 2005	51	23	23	9	9	3	0	0	118
Nov 2003 - Oct 2004	55	34	15	9	19	4	1	1	138
									(-14.5%)

Number of deaths

Nov 2004 - Oct 2005	56	26	25	11	11	3	0	0	132
Nov 2003 - Oct 2004	63	35	16	11	21	4	1	1	152
									(-13.2%)

Note: Data on heavy rigid trucks not currently available

FATAL CRASHES INVOLVING BUSES

Number of crashes

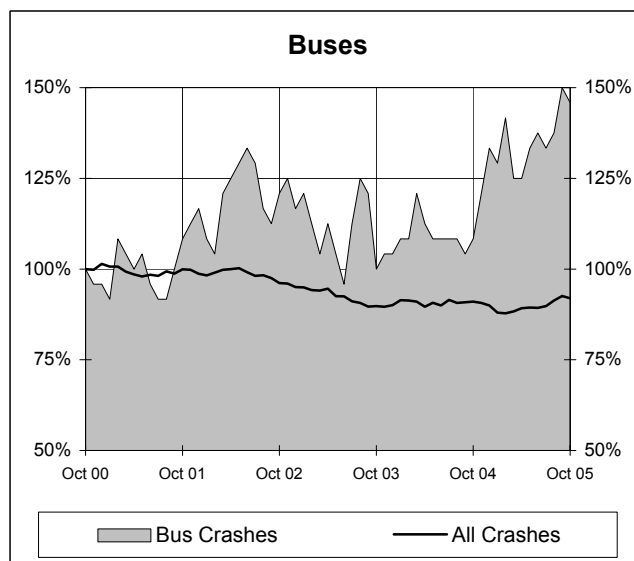
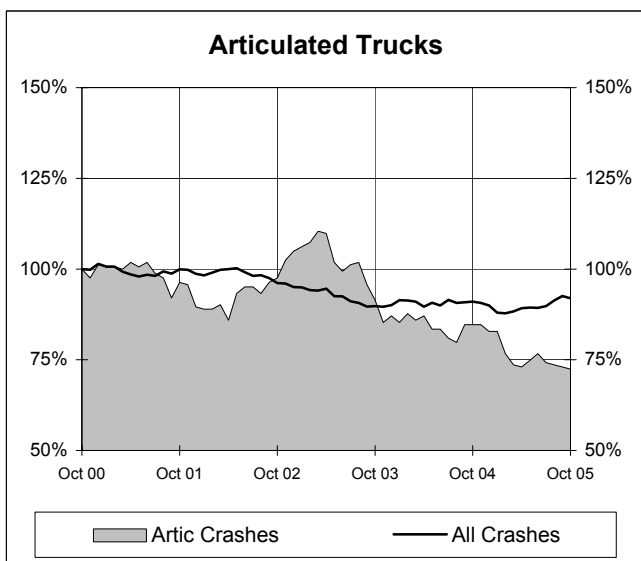
Nov 2004 - Oct 2005	21	5	8	0	1	0	0	0	35
Nov 2003 - Oct 2004	12	4	5	4	0	0	0	1	26
									(+34.6%)

Number of deaths

Nov 2004 - Oct 2005	27	5	10	0	1	0	0	0	43
Nov 2003 - Oct 2004	12	4	5	4	0	0	0	1	26
									(+65.4%)

Annual count of fatal crashes involving articulated trucks and buses - last 5 years

The number shown at each month represents the number of fatal crashes in the preceding 12 months expressed as a percentage of the number of fatal crashes in the 12 months to October 2000.



CHARACTERISTICS OF FATAL CRASHES

Proportion (per cent) of fatal crashes by speed limit, crash type, time of day, and time of week - two years ended October 2005 and two years ended October 2000

	<i>Speed limit (km/h) (a)</i>			<i>Time of Day</i>	
	<i>Up to 60</i>	<i>65-95</i>	<i>100+</i>	<i>Day time</i>	<i>Night-time (b)</i>
<i>Nov 2003 - Oct 2005</i>	32.0	22.2	45.9	54.8	45.2
<i>Nov 1998 - Oct 2000</i>	32.5	22.1	45.4	55.7	44.3

	<i>Crash Type</i>			<i>Time of week</i>	
	<i>Pedestrian crash</i>	<i>Other single veh. crash</i>	<i>Other multiple veh. crash</i>	<i>Week day</i>	<i>Week-end (c)</i>
<i>Nov 2003 - Oct 2005</i>	15.2	44.7	40.1	57.6	42.4
<i>Nov 1998 - Oct 2000</i>	19.2	38.8	41.9	59.8	40.2

(a) Excludes ACT

(b) 6:00 pm to 5:59 am

(c) 6:00 pm Friday to 5:59 am Monday