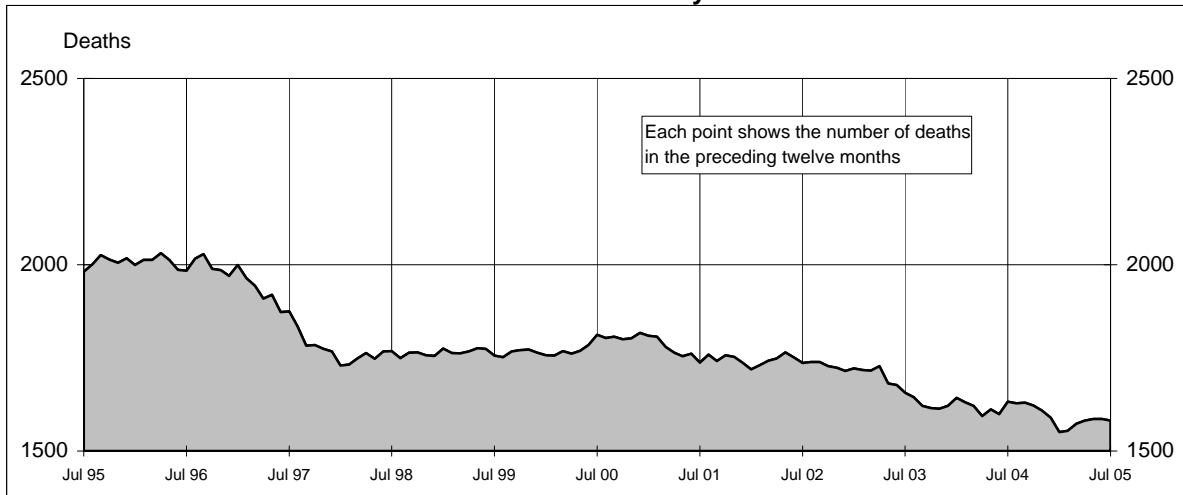
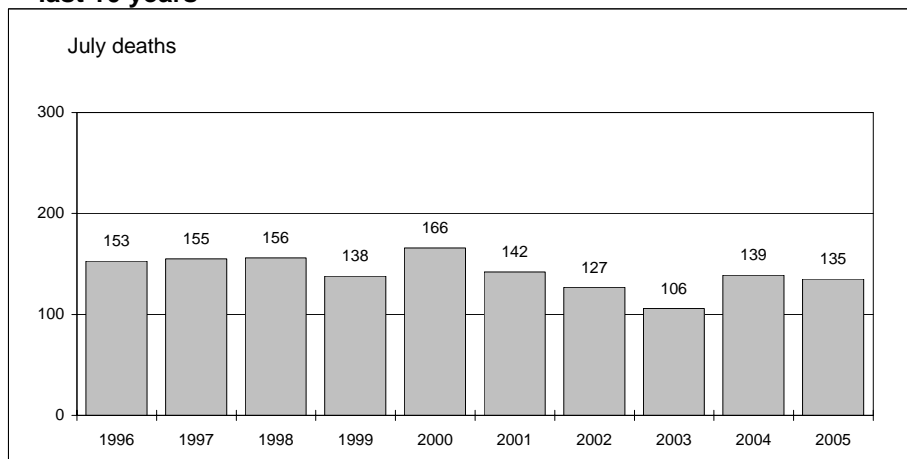




#### Australian road deaths for 12 months to date - last 10 years



#### Australian road deaths for July - last 10 years



#### Inquiries

For further information about data in this bulletin, contact:

The Editor  
Transport Safety Statistics Unit  
Australian Transport Safety Bureau  
PO Box 967,  
Civic Square, ACT 2608

Email: [stats@atsb.gov.au](mailto:stats@atsb.gov.au)  
Internet: [www.atsb.gov.au](http://www.atsb.gov.au)

#### Data Sources

The data presented here are obtained from the following sources:

Roads and Traffic Authority, NSW  
Vicroads  
Queensland Transport  
South Australian Police Department  
Western Australian Police Service  
Department of Infrastructure,  
Energy and Resources, Tasmania  
Northern Territory Police,  
Fire & Emergency Services  
Department of Urban Services, ACT

#### Note

Road death statistics for recent months are preliminary and subject to revision. They include any deaths occurring within 30 days of a crash stemming from injuries received in the crash.

© Australian Government

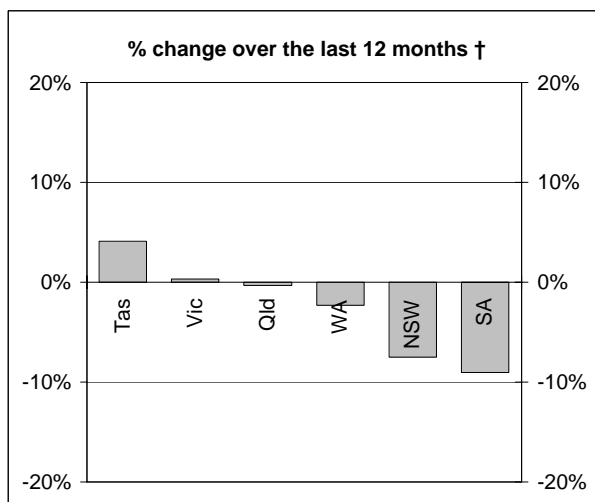
#### This month's key figures

The total number of road deaths in July 2005 was 135  
- this is a 2.9% decrease from the July 2004 figure.

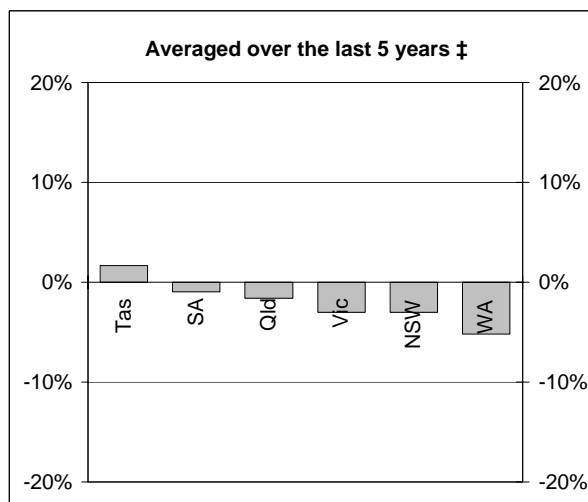
The number of road deaths in 2005 to the end of July is 927  
- this is a 0.7% decrease from the same 7 month period in 2004.

# NUMBER OF ROAD CRASH DEATHS

## Percentage change in road deaths in each State



† Percentage change between the 12-month periods of Aug 2003 - Jul 2004 and Aug 2004 - Jul 2005



‡ Average annual percentage change over each of the 12-month periods from Aug 1999 - Jul 2000 to Aug 2004 - Jul 2005

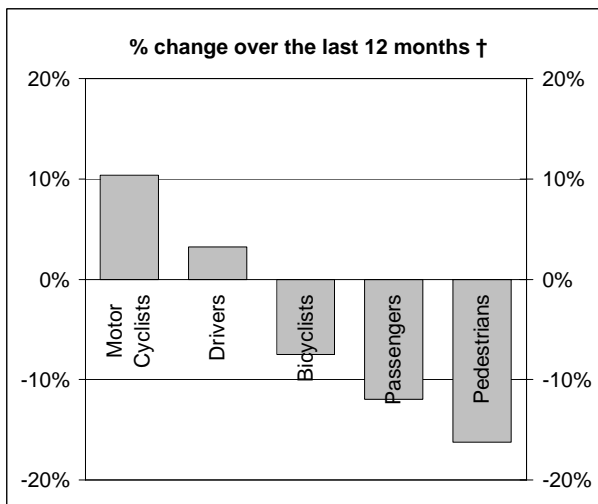
## Road deaths by State/Territory for month, year to date, and twelve months - period ended July 2005 and period ended July 2004

	NSW	Vic	Qld	SA	WA	Tas	NT	ACT	Australia
<b>Current month</b>									
Jul 2005	48	29	22	16	10	1	5	4	135
Jul 2004	44	27	28	18	16	3	2	1	139
% change	9.1	7.4	-21.4	-11.1	-37.5	-66.7	150.0	300.0	-2.9
<b>Year to date</b>									
Jan 2005 - Jul 2005	306	213	164	87	89	26	27	15	927
Jan 2004 - Jul 2004	306	215	171	85	99	33	19	6	934
% change	0.0	-0.9	-4.1	2.4	-10.1	-21.2	42.1	150.0	-0.7
<b>12-months to date</b>									
Aug 2004 - Jul 2005	516	341	304	141	168	51	43	18	1582
Aug 2003 - Jul 2004	558	340	305	155	172	49	43	10	1632
Difference	-42	1	-1	-14	-4	2	0	8	-50
% change	-7.5	0.3	-0.3	-9.0	-2.3	4.1	0.0	80.0	-3.1
<b>Ave annual % change (a)</b>									
Jul 2000 to Jul 2005	-3.0	-3.0	-1.6	-1.0	-5.2	1.6	-4.5	2.4	-2.7

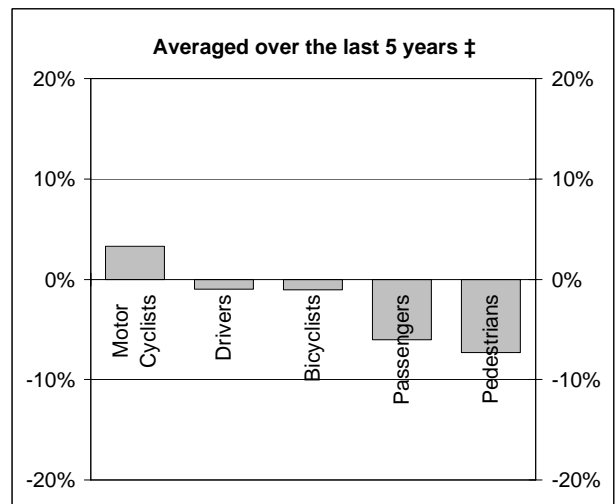
(a) This represents the average annual exponential change between the annual count of 5 years ago and the current annual count

# DEATHS IN EACH ROAD USER GROUP

## Percentage change in deaths in each road user group



† Percentage change between the 12-month periods of Aug 2003 - Jul 2004 and Aug 2004 - Jul 2005



‡ Average annual percentage change over each of the 12-month periods from Aug 1999 - Jul 2000 to Aug 2004 - Jul 2005

## Road deaths by road user group and gender for twelve months ended July 2005 and twelve months ended July 2004

	Drivers	Passengers	Pedestrians	Motor cyclists (a)	Bicyclists	All road users (b)
<b>Males</b>						
Aug 2004 - Jul 2005	599	190	128	197	32	1150
Aug 2003 - Jul 2004	576	185	171	178	33	1150
% change	4.0	2.7	-25.1	10.7	-3.0	0.0
<b>Females</b>						
Aug 2004 - Jul 2005	175	156	78	16	5	431
Aug 2003 - Jul 2004	175	207	75	15	7	481
% change	0.0	-24.6	4.0	6.7	-28.6	-10.4
<b>Persons (c)</b>						
Aug 2004 - Jul 2005	775	346	206	213	37	1582
Aug 2003 - Jul 2004	751	393	246	193	40	1632
% change	3.2	-12.0	-16.3	10.4	-7.5	-3.1
<b>Ave annual % change (d)</b>						
Jul 2000 to Jul 2005	-1.0	-6.0	-7.3	3.3	-1.0	-2.7

(a) Includes pillion passengers

(b) Includes road users not separately specified

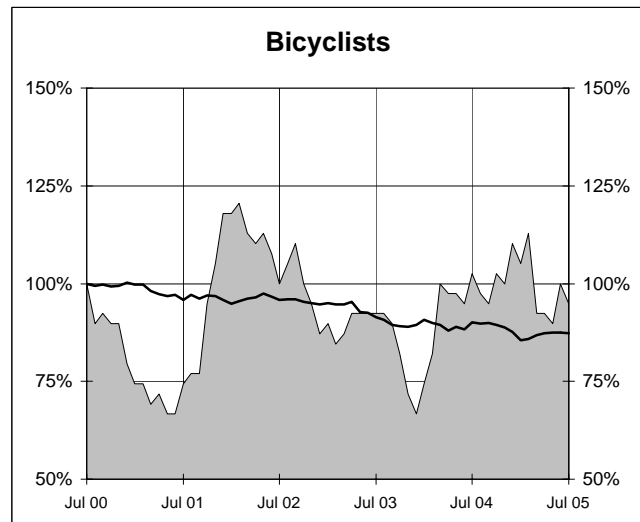
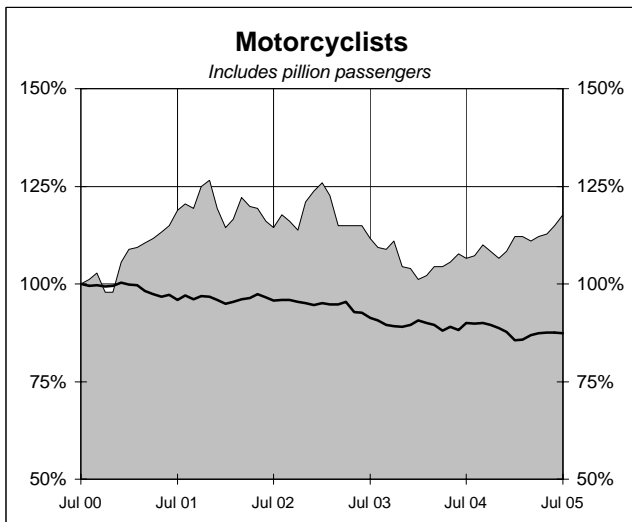
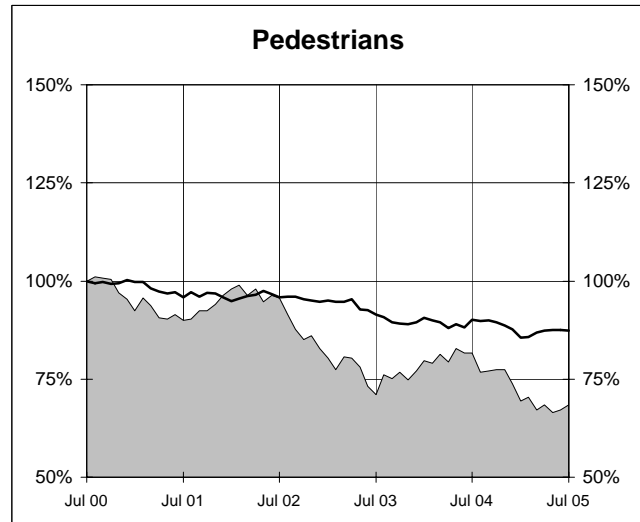
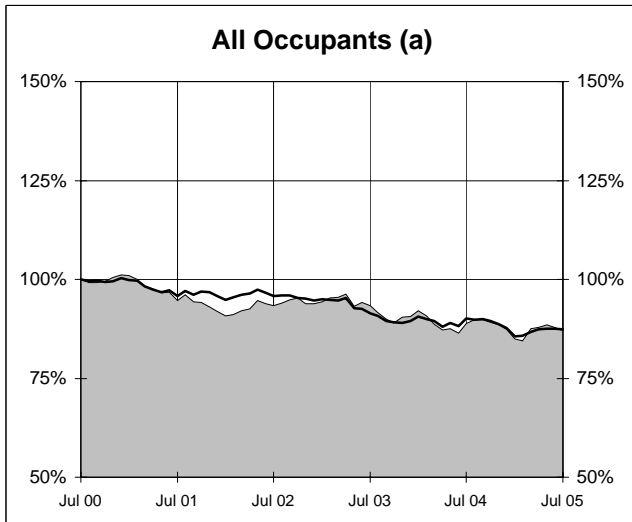
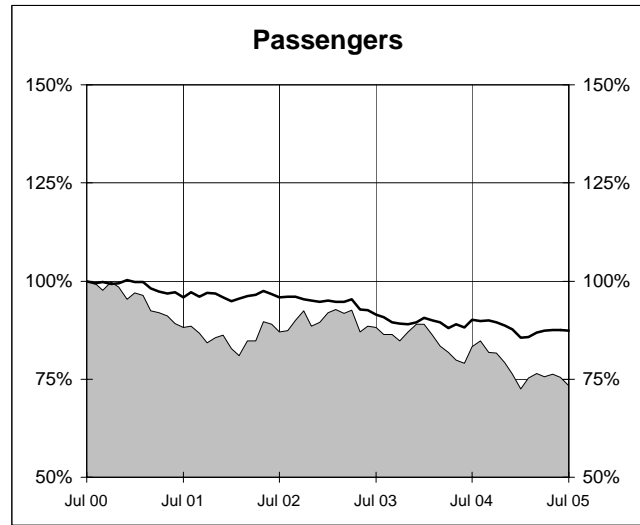
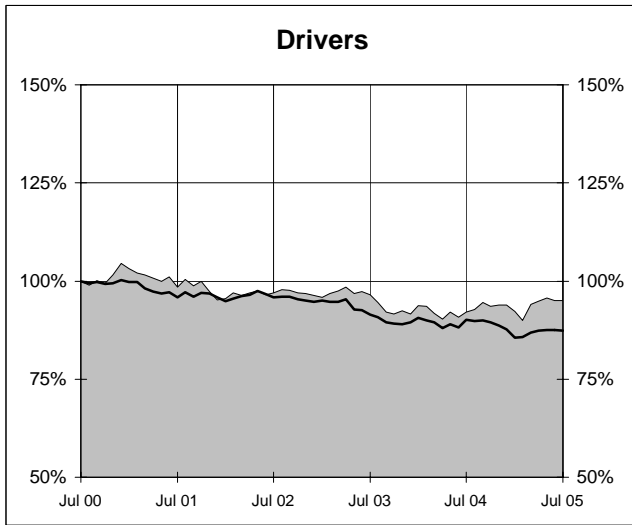
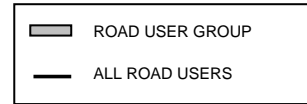
(c) Includes road users with unstated gender

(d) This represents the average annual exponential change between the annual count of 5 years ago and the current annual count

# DEATHS IN EACH ROAD USER GROUP - TRENDS

## Annual deaths in each road user group - last 5 years

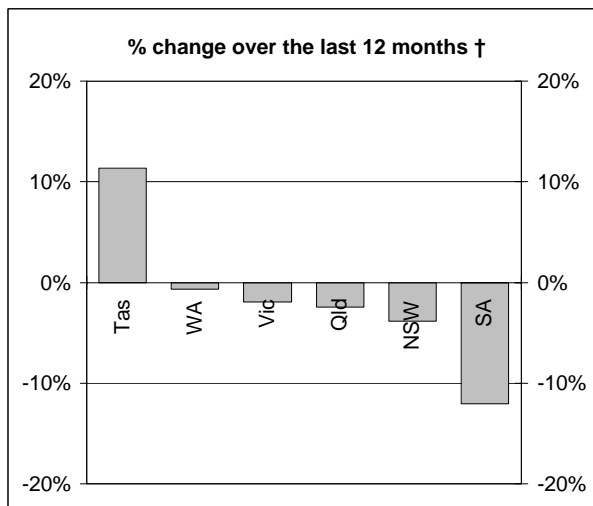
The number shown at each month represents the number of deaths in the preceding 12 months expressed as a percentage of the number of deaths in the 12 months to July 2000.



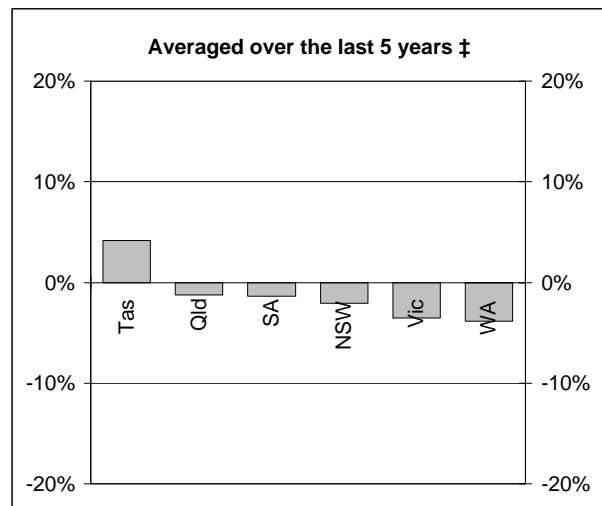
(a) Includes drivers and passengers

# NUMBER OF FATAL ROAD CRASHES

## Percentage change in fatal crashes in each State



† Percentage change between the 12-month periods of Aug 2003 - Jul 2004 and Aug 2004 - Jul 2005



‡ Average annual percentage change over each of the 12-month periods from Aug 1999 - Jul 2000 to Aug 2004 - Jul 2005

## Fatal crashes by State/Territory for month, year to date and twelve months - period ended July 2005 and period ended July 2004

	NSW	Vic	Qld	SA	WA	Tas	NT	ACT	Australia
<b>Current month</b>									
Jul 2005	44	25	21	15	10	1	5	3	124
Jul 2004	37	22	26	16	15	2	2	1	121
% change	18.9	13.6	-19.2	-6.3	-33.3	-50.0	150.0	200.0	2.5
<b>Year to date</b>									
Jan 2005 - Jul 2005	282	190	148	75	83	26	24	14	842
Jan 2004 - Jul 2004	271	198	161	79	93	29	19	6	856
% change	4.1	-4.0	-8.1	-5.1	-10.8	-10.3	26.3	133.3	-1.6
<b>12 months to date</b>									
Aug 2004 - Jul 2005	475	304	276	124	152	49	39	17	1436
Aug 2003 - Jul 2004	494	310	283	141	153	44	38	10	1473
% change	-3.8	-1.9	-2.5	-12.1	-0.7	11.4	2.6	70.0	-2.5
<b>Ave annual % change (a)</b>									
Jul 2000 to Jul 2005	-2.1	-3.5	-1.3	-1.4	-3.9	4.1	-3.7	5.5	-2.2

(a) This represents the average annual exponential change between the annual count of 5 years ago and the current annual count

# FATAL CRASHES INVOLVING TRUCKS AND BUSES

Fatal crashes and deaths involving articulated trucks and buses - twelve months ended July 2005 and twelve months ended July 2004

	NSW	Vic	Qld	SA	WA	Tas	NT	ACT	Australia
--	-----	-----	-----	----	----	-----	----	-----	-----------

## FATAL CRASHES INVOLVING ARTICULATED TRUCKS

### Number of crashes

Aug 2004 - Jul 2005	53	24	16	8	12	4	0	0	117
Aug 2003 - Jul 2004	50	32	18	11	16	3	1	1	132
									(-11.4%)

### Number of deaths

Aug 2004 - Jul 2005	58	27	17	10	14	4	0	0	130
Aug 2003 - Jul 2004	61	35	20	13	19	3	1	1	153
									(-15.0%)

Note: Data on heavy rigid trucks not currently available

## FATAL CRASHES INVOLVING BUSES

### Number of crashes

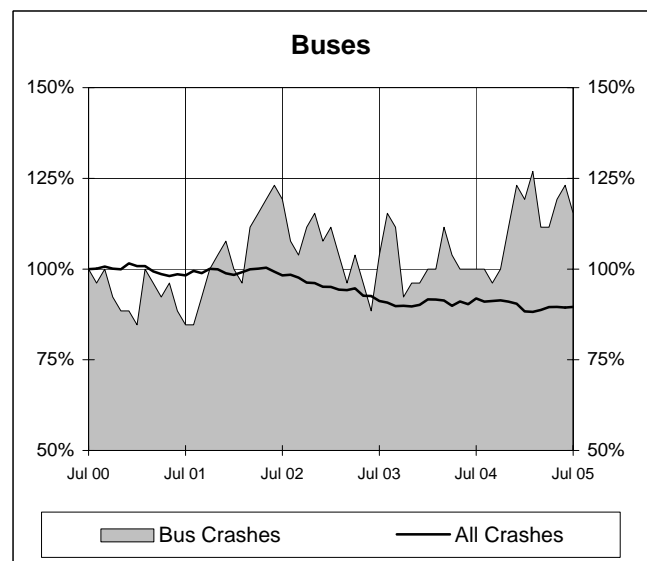
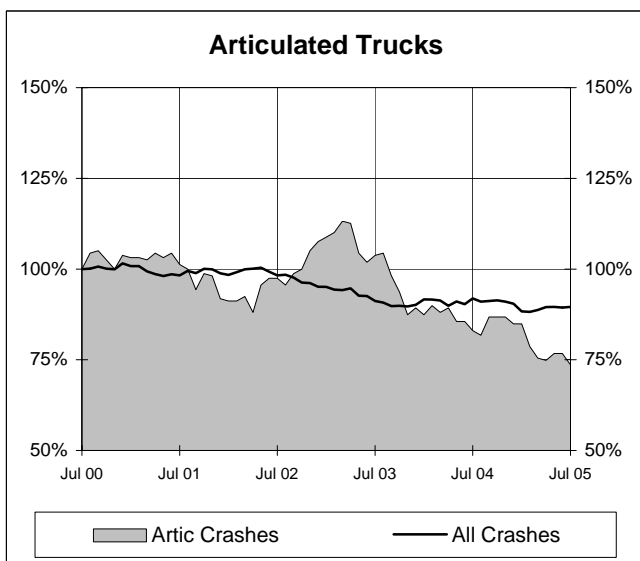
Aug 2004 - Jul 2005	21	2	4	2	1	0	0	0	30
Aug 2003 - Jul 2004	12	5	4	3	0	0	1	1	26
									(+15.4%)

### Number of deaths

Aug 2004 - Jul 2005	25	2	4	2	1	0	0	0	34
Aug 2003 - Jul 2004	12	5	4	4	0	0	1	1	27
									(+25.9%)

## Annual count of fatal crashes involving articulated trucks and buses - last 5 years

The number shown at each month represents the number of fatal crashes in the preceding 12 months expressed as a percentage of the number of fatal crashes in the 12 months to July 2000.



## CHARACTERISTICS OF FATAL CRASHES

Proportion (per cent) of fatal crashes by speed limit, crash type, time of day, and time of week - two years ended July 2005 and two years ended July 2000

	<i>Speed limit (km/h) (a)</i>			<i>Time of Day</i>	
	<i>Up to 60</i>	<i>65-95</i>	<i>100+</i>	<i>Day time</i>	<i>Night-time (b)</i>
<i>Aug 2003 - Jul 2005</i>	32.4	22.5	45.1	54.6	45.4
<i>Aug 1998 - Jul 2000</i>	32.7	22.1	45.2	54.3	45.7

	<i>Crash Type</i>			<i>Time of week</i>	
	<i>Pedestrian crash</i>	<i>Other single veh. crash</i>	<i>Other multiple veh. crash</i>	<i>Week day</i>	<i>Week- end (c)</i>
<i>Aug 2003 - Jul 2005</i>	15.3	44.6	40.2	58.3	41.7
<i>Aug 1998 - Jul 2000</i>	19.6	38.5	41.9	59.2	40.8

(a) Excludes ACT

(b) 6:00 pm to 5:59 am

(c) 6:00 pm Friday to 5:59 am Monday