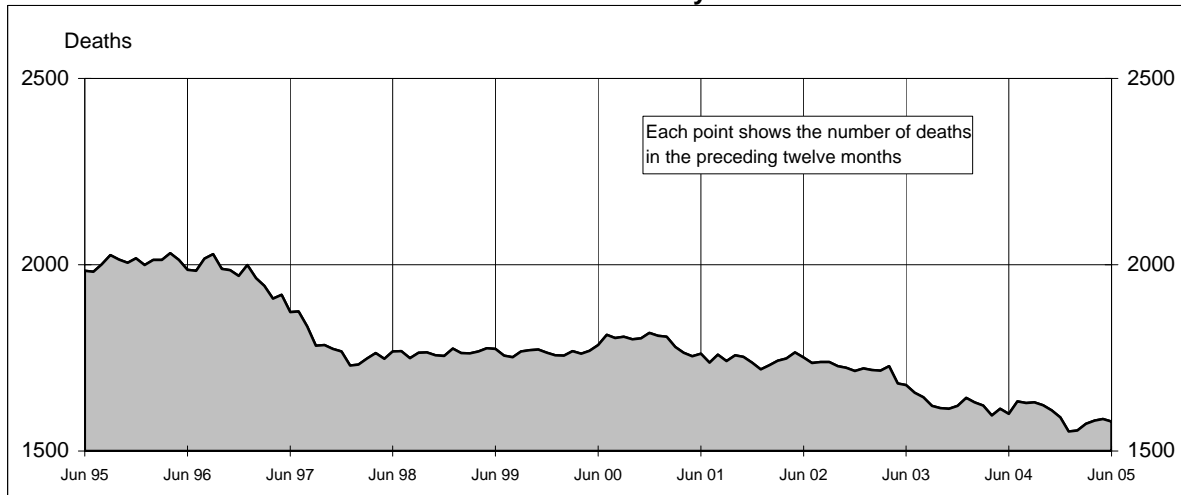
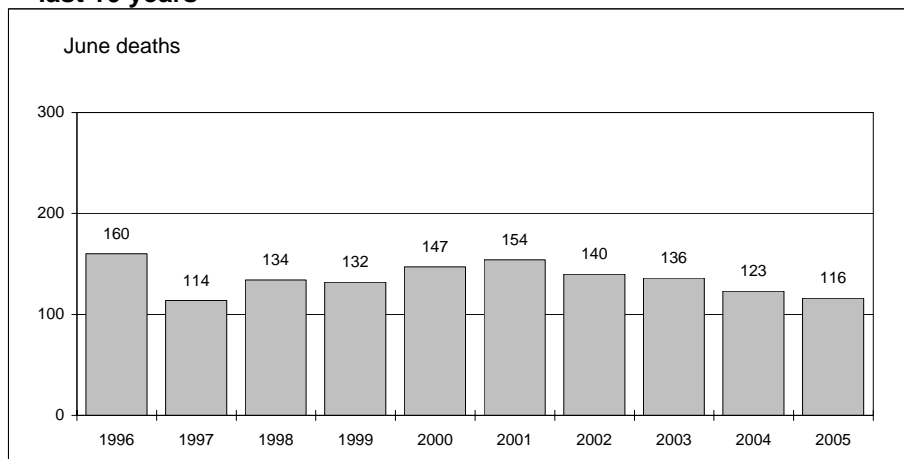




#### Australian road deaths for 12 months to date - last 10 years



#### Australian road deaths for June - last 10 years



#### Inquiries

For further information about data in this bulletin, contact:

The Editor  
Transport Safety Statistics Unit  
Australian Transport Safety Bureau  
PO Box 967,  
Civic Square, ACT 2608

Email: [stats@atsb.gov.au](mailto:stats@atsb.gov.au)  
Internet: [www.atsb.gov.au](http://www.atsb.gov.au)

#### Data Sources

The data presented here are obtained from the following sources:

Roads and Traffic Authority, NSW  
Vicroads

Queensland Transport  
South Australian Police Department  
Western Australian Police Service  
Department of Infrastructure,  
Energy and Resources, Tasmania  
Northern Territory Police,  
Fire & Emergency Services  
Department of Urban Services, ACT

#### Note

Road death statistics for recent months are preliminary and subject to revision. They include any deaths occurring within 30 days of a crash stemming from injuries received in the crash.

© Australian Government

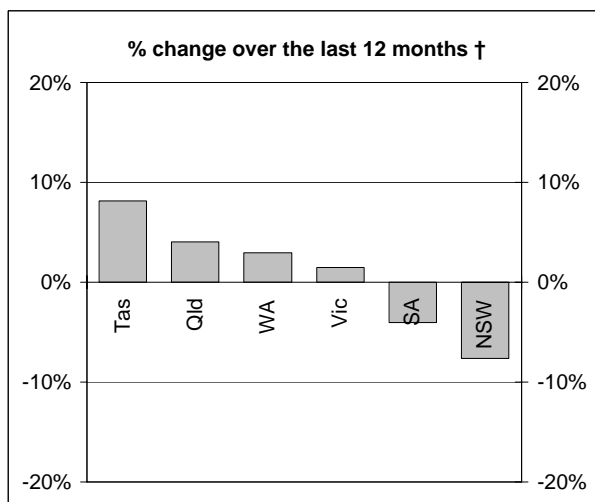
#### This month's key figures

The total number of road deaths in June 2005 was 116  
- this is a 5.7% decrease from the June 2004 figure.

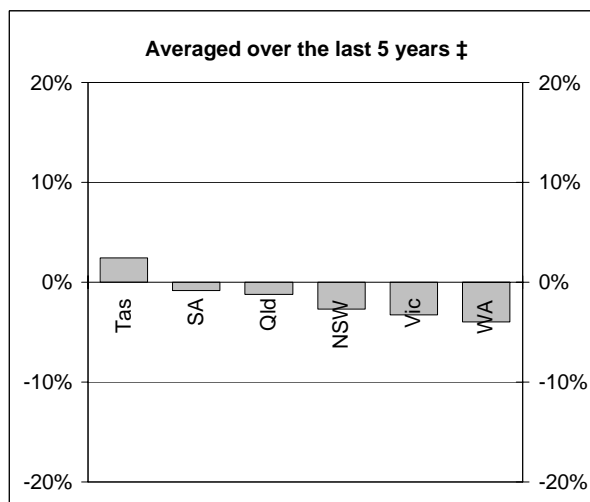
The number of road deaths in 2005 to the end of June is 785  
- this is a 1.4% decrease from the same 6 month period in 2004.

# NUMBER OF ROAD CRASH DEATHS

## Percentage change in road deaths in each State



† Percentage change between the 12-month periods of Jul 2003 - Jun 2004 and Jul 2004 - Jun 2005



‡ Average annual percentage change over each of the 12-month periods from Jul 1999 - Jun 2000 to Jul 2004 - Jun 2005

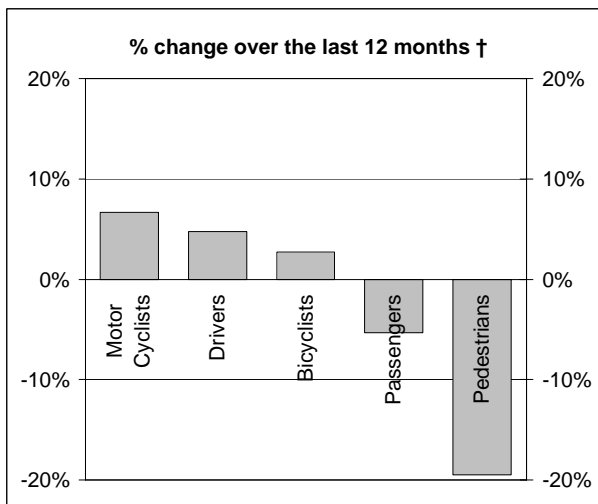
## Road deaths by State/Territory for month, year to date, and twelve months - period ended June 2005 and period ended June 2004

	NSW	Vic	Qld	SA	WA	Tas	NT	ACT	Australia
<b>Current month</b>									
Jun 2005	37	23	27	7	6	9	7	0	116
Jun 2004	41	28	22	14	10	4	3	1	123
% change	-9.8	-17.9	22.7	-50.0	-40.0	125.0	133.3	-100.0	-5.7
<b>Year to date</b>									
Jan 2005 - Jun 2005	254	183	141	71	78	25	22	11	785
Jan 2004 - Jun 2004	263	188	143	67	83	30	17	5	796
% change	-3.4	-2.7	-1.4	6.0	-6.0	-16.7	29.4	120.0	-1.4
<b>12-months to date</b>									
Jul 2004 - Jun 2005	508	338	309	143	173	53	40	15	1579
Jul 2003 - Jun 2004	550	333	297	149	168	49	45	9	1600
Difference	-42	5	12	-6	5	4	-5	6	-21
% change	-7.6	1.5	4.0	-4.0	3.0	8.2	-11.1	66.7	-1.3
<b>Ave annual % change (a)</b>									
Jun 2000 to Jun 2005	-2.7	-3.3	-1.2	-0.8	-4.0	2.4	-5.1	1.4	-2.4

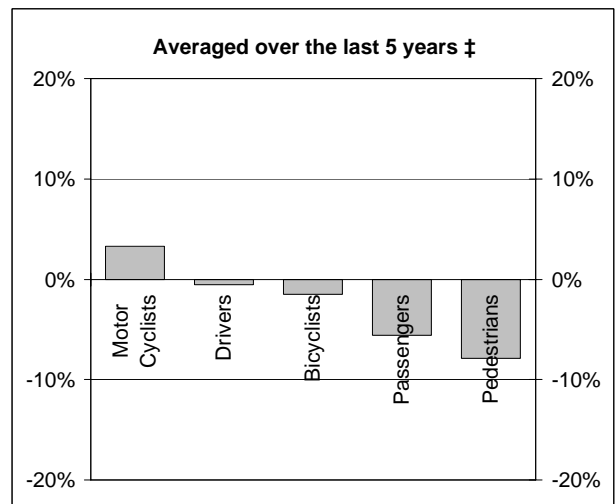
(a) This represents the average annual exponential change between the annual count of 5 years ago and the current annual count

# DEATHS IN EACH ROAD USER GROUP

## Percentage change in deaths in each road user group



† Percentage change between the 12-month periods of Jul 2003 - Jun 2004 and Jul 2004 - Jun 2005



‡ Average annual percentage change over each of the 12-month periods from Jul 1999 - Jun 2000 to Jul 2004 - Jun 2005

## Road deaths by road user group and gender for twelve months ended June 2005 and twelve months ended June 2004

	Drivers	Passengers	Pedestrians	Motor cyclists (a)	Bicyclists	All road users (b)
<b>Males</b>						
Jul 2004 - Jun 2005	604	186	126	194	33	1148
Jul 2003 - Jun 2004	563	176	172	180	30	1127
% change	7.3	5.7	-26.7	7.8	10.0	1.9
<b>Females</b>						
Jul 2004 - Jun 2005	170	168	72	14	5	430
Jul 2003 - Jun 2004	177	197	74	15	7	472
% change	-4.0	-14.7	-2.7	-6.7	-28.6	-8.9
<b>Persons (c)</b>						
Jul 2004 - Jun 2005	775	354	198	208	38	1579
Jul 2003 - Jun 2004	740	374	246	195	37	1600
% change	4.7	-5.3	-19.5	6.7	2.7	-1.3
<b>Ave annual % change (d)</b>						
Jun 2000 to Jun 2005	-0.6	-5.6	-7.9	3.3	-1.5	-2.4

(a) Includes pillion passengers

(b) Includes road users not separately specified

(c) Includes road users with unstated gender

(d) This represents the average annual exponential change between the annual count of 5 years ago and the current annual count

## DEATHS IN EACH ROAD USER GROUP - QUARTERLY REPORT

Road deaths by road user group and State/Territory for twelve months ended June 2005 and twelve months ended June 2004

	NSW	Vic	Qld	SA	WA	Tas	NT	ACT	Australia
<b>Drivers</b>									
Jul 2004 - Jun 2005	250	174	142	78	87	24	16	4	775
Jul 2003 - Jun 2004	229	160	136	81	81	26	21	6	740
% change	9.2	8.8	4.4	-3.7	7.4	-7.7	-23.8	-	4.7
<i>Ave annual % change (a)</i>									
Jun 2000 to Jun 2005	0.2	-2.3	-0.4	2.8	-0.9	0.9	-4.4	-	-0.6
<b>Passengers</b>									
Jul 2004 - Jun 2005	101	80	66	35	42	14	16	0	354
Jul 2003 - Jun 2004	140	68	71	30	45	12	7	1	374
% change	-27.9	17.6	-7.0	16.7	-6.7	16.7	128.6	-	-5.3
<i>Ave annual % change (a)</i>									
Jun 2000 to Jun 2005	-8.7	1.6	-6.0	-1.6	-10.5	-2.6	0.0	-	-5.6
<b>Pedestrians</b>									
Jul 2004 - Jun 2005	80	41	33	11	22	3	4	4	198
Jul 2003 - Jun 2004	103	51	44	16	14	4	12	2	246
% change	-22.3	-19.6	-25.0	-31.3	57.1	-25.0	-66.7	-	-19.5
<i>Ave annual % change (a)</i>									
Jun 2000 to Jun 2005	-6.2	-11.4	-5.6	-12.9	-5.4	-12.9	-16.7	-	-7.9
<b>Motor cyclists (b)</b>									
Jul 2004 - Jun 2005	65	36	61	16	16	8	0	6	208
Jul 2003 - Jun 2004	65	44	35	18	27	6	0	0	195
% change	0.0	-18.2	74.3	-11.1	-40.7	33.3	-	-	6.7
<i>Ave annual % change (a)</i>									
Jun 2000 to Jun 2005	3.0	-3.0	9.9	-1.2	-3.4	32.0	-	-	3.3
<b>Bicyclists</b>									
Jul 2004 - Jun 2005	12	7	6	1	5	4	2	1	38
Jul 2003 - Jun 2004	13	9	10	3	1	1	0	0	37
<b>All road users (c)</b>									
Jul 2004 - Jun 2005	508	338	309	143	173	53	40	15	1579
Jul 2003 - Jun 2004	550	333	297	149	168	49	45	9	1600
% change	-7.6	1.5	4.0	-4.0	3.0	8.2	-11.1	66.7	-1.3
<i>Ave annual % change (a)</i>									
Jun 2000 to Jun 2005	-2.7	-3.3	-1.2	-0.8	-4.0	2.4	-5.1	1.4	-2.4

(a) This represents the average annual exponential change between the annual count of 5-years ago and the current annual count

(b) Includes pillion passengers

(c) Includes road users not separately classified

## DEATHS IN EACH ROAD USER GROUP - QUARTERLY REPORT

Road deaths by road user group and age for twelve months ended  
June 2005 and twelve months ended June 2004

	0-16 years	17-20 years	21-25 years	26-39 years	40-59 years	60+ years	All fatalities(d)
<b>Drivers</b>							
Jul 2004 - Jun 2005	4	110	101	192	205	159	775
Jul 2003 - Jun 2004	10	98	97	184	196	155	740
% change	-60.0	12.2	4.1	4.3	4.6	2.6	4.7
<i>Ave annual % change (a)</i>							
Jun 2000 to Jun 2005	-15.0	-3.0	3.3	-5.3	3.3	1.7	-0.6
<b>Passengers</b>							
Jul 2004 - Jun 2005	57	68	48	42	57	76	354
Jul 2003 - Jun 2004	90	81	32	53	45	71	374
% change	-36.7	-16.0	50.0	-20.8	26.7	7.0	-5.3
<i>Ave annual % change (a)</i>							
Jun 2000 to Jun 2005	-10.3	-7.2	-3.7	-9.5	3.1	-3.5	-5.6
<b>Pedestrians</b>							
Jul 2004 - Jun 2005	16	19	16	38	39	67	198
Jul 2003 - Jun 2004	24	12	16	48	54	92	246
% change	-33.3	58.3	0.0	-20.8	-27.8	-27.2	-19.5
<i>Ave annual % change (a)</i>							
Jun 2000 to Jun 2005	-17.2	-4.6	-2.3	-5.0	-5.6	-10.1	-7.9
<b>Motor cyclists (b)</b>							
Jul 2004 - Jun 2005	6	23	34	82	52	10	208
Jul 2003 - Jun 2004	9	15	35	79	48	9	195
% change	-33.3	53.3	-2.9	3.8	8.3	11.1	6.7
<i>Ave annual % change (a)</i>							
Jun 2000 to Jun 2005	3.7	3.9	-0.6	1.5	5.9	27.2	3.3
<b>Bicyclists</b>							
Jul 2004 - Jun 2005	11	1	1	9	10	6	38
Jul 2003 - Jun 2004	10	1	1	7	10	8	37
<b>All road users (c)</b>							
Jul 2004 - Jun 2005	94	221	201	364	366	319	1579
Jul 2003 - Jun 2004	143	209	182	372	355	335	1600
% change	-34.3	5.7	10.4	-2.2	3.1	-4.8	-1.3
<i>Ave annual % change (a)</i>							
Jun 2000 to Jun 2005	-10.5	-4.0	0.1	-4.3	2.5	-2.6	-2.4

(a) This represents the average annual exponential change between the annual count of 5-years ago and the current annual count

(b) Includes pillion passengers

(c) Includes road users not separately classified

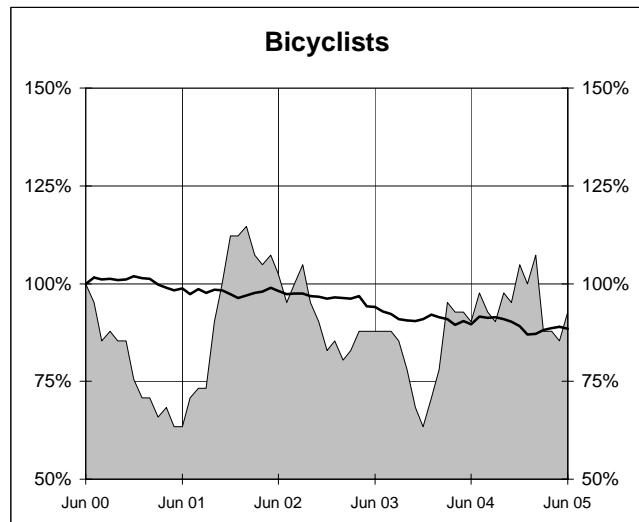
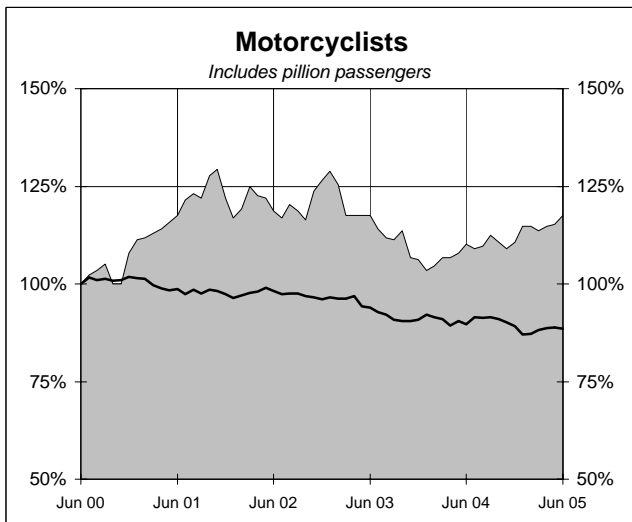
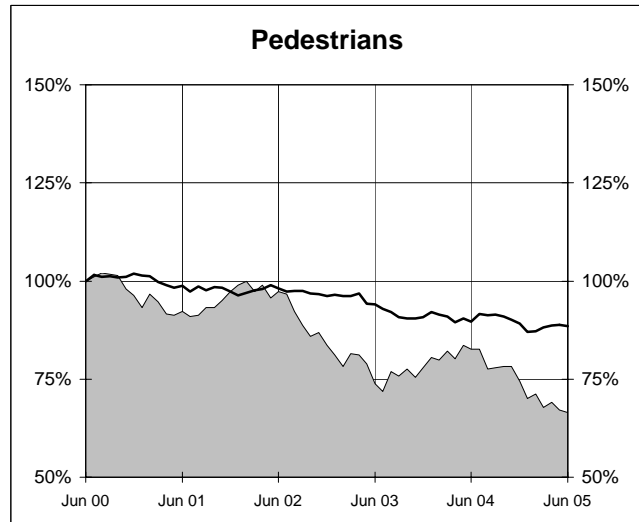
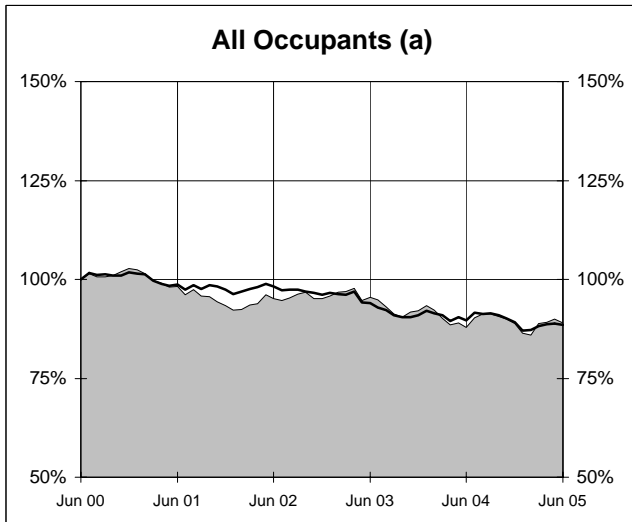
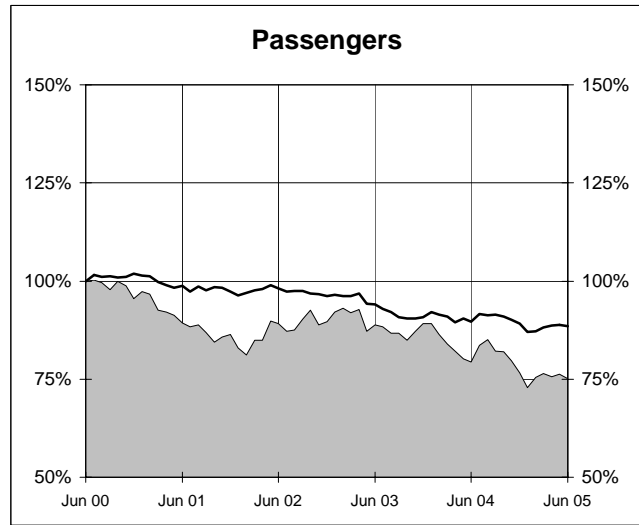
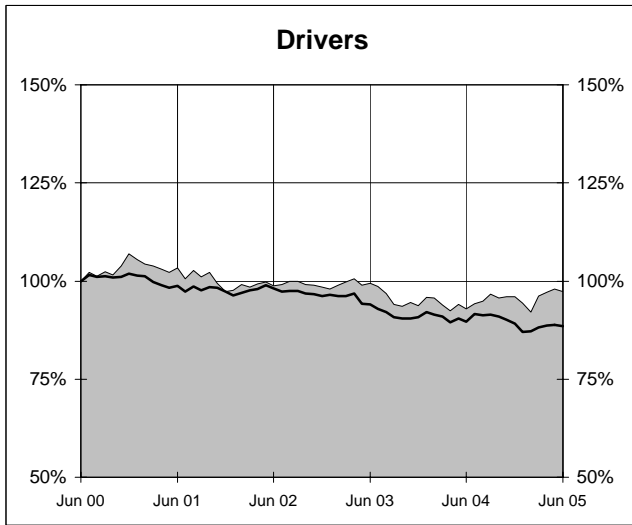
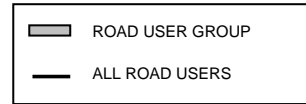
(d) Includes deaths with unstated age

- Percentage change not calculated

# DEATHS IN EACH ROAD USER GROUP - TRENDS

## Annual deaths in each road user group - last 5 years

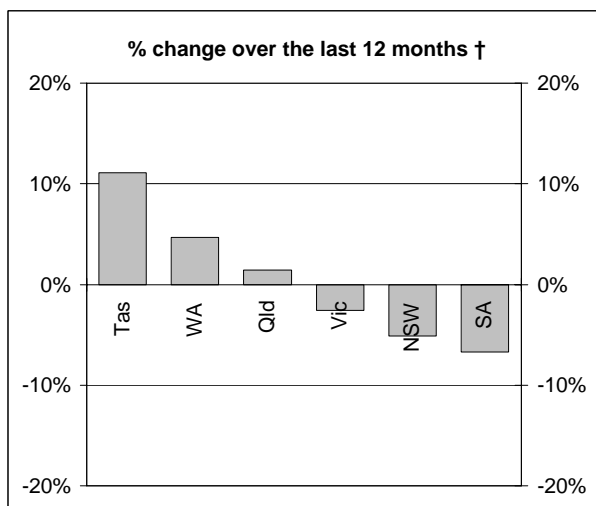
The number shown at each month represents the number of deaths in the preceding 12 months expressed as a percentage of the number of deaths in the 12 months to June 2000.



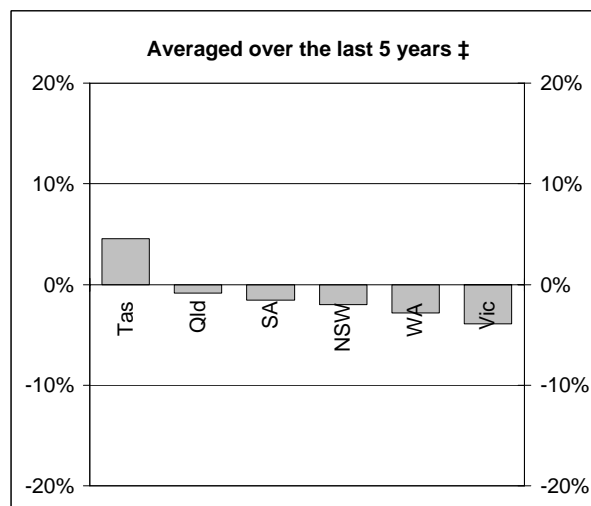
(a) Includes drivers and passengers

# NUMBER OF FATAL ROAD CRASHES

## Percentage change in fatal crashes in each State



† Percentage change between the 12-month periods of Jul 2003 - Jun 2004 and Jul 2004 - Jun 2005



‡ Average annual percentage change over each of the 12-month periods from Jul 1999 - Jun 2000 to Jul 2004 - Jun 2005

## Fatal crashes by State/Territory for month, year to date and twelve months - period ended June 2005 and period ended June 2004

	NSW	Vic	Qld	SA	WA	Tas	NT	ACT	Australia
<b>Current month</b>									
Jun 2005	31	20	23	7	6	9	6	0	102
Jun 2004	38	24	20	13	9	4	3	1	112
% change	-18.4	-16.7	15.0	-46.2	-33.3	125.0	100.0	-100.0	-8.9
<b>Year to date</b>									
Jan 2005 - Jun 2005	234	164	126	60	72	25	19	11	711
Jan 2004 - Jun 2004	235	176	135	63	78	27	17	5	736
% change	-0.4	-6.8	-6.7	-4.8	-7.7	-7.4	11.8	120.0	-3.4
<b>12 months to date</b>									
Jul 2004 - Jun 2005	464	300	280	125	156	50	36	15	1426
Jul 2003 - Jun 2004	489	308	276	134	149	45	39	9	1449
% change	-5.1	-2.6	1.4	-6.7	4.7	11.1	-7.7	66.7	-1.6
<b>Ave annual % change (a)</b>									
Jun 2000 to Jun 2005	-2.0	-3.9	-0.8	-1.5	-2.8	4.6	-5.6	6.4	-2.1

(a) This represents the average annual exponential change between the annual count of 5 years ago and the current annual count

# FATAL CRASHES INVOLVING TRUCKS AND BUSES

Fatal crashes and deaths involving articulated trucks and buses -  
twelve months ended June 2005 and twelve months ended June 2004

	NSW	Vic	Qld	SA	WA	Tas	NT	ACT	Australia
--	-----	-----	-----	----	----	-----	----	-----	-----------

## FATAL CRASHES INVOLVING ARTICULATED TRUCKS

### Number of crashes

Jul 2004 - Jun 2005	52	24	16	8	14	4	0	0	118
Jul 2003 - Jun 2004	53	35	19	9	15	3	1	1	136
									(-13.2%)

### Number of deaths

Jul 2004 - Jun 2005	57	27	17	12	16	4	0	0	133
Jul 2003 - Jun 2004	67	38	21	9	18	3	1	1	158
									(-15.8%)

Note: Data on heavy rigid trucks not currently available

## FATAL CRASHES INVOLVING BUSES

### Number of crashes

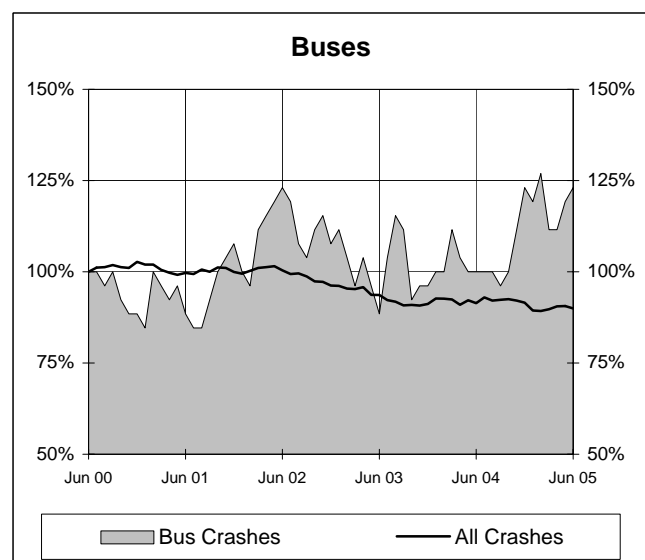
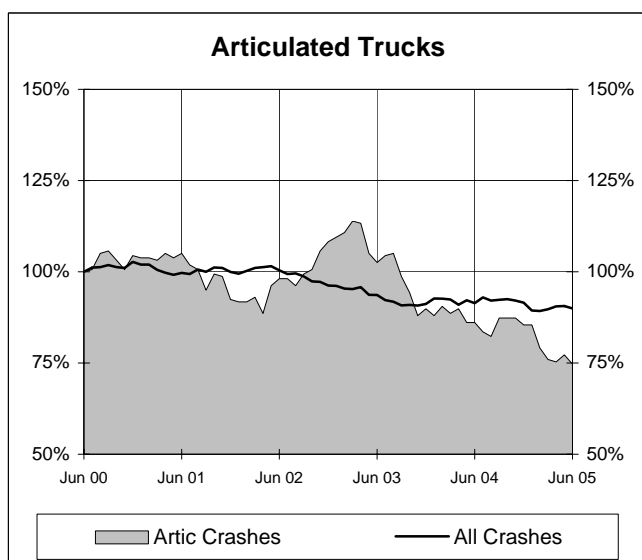
Jul 2004 - Jun 2005	21	3	4	3	1	0	0	0	32
Jul 2003 - Jun 2004	11	4	5	2	2	0	1	1	26
									(+23.1%)

### Number of deaths

Jul 2004 - Jun 2005	25	3	4	3	1	0	0	0	36
Jul 2003 - Jun 2004	12	4	5	3	2	0	1	1	28
									(+28.6%)

## Annual count of fatal crashes involving articulated trucks and buses - last 5 years

The number shown at each month represents the number of fatal crashes in the preceding 12 months expressed as a percentage of the number of fatal crashes in the 12 months to June 2000.





## TIME SERIES - QUARTERLY REPORT

### Road deaths by road user group, 1990 to 2004

	<i>Drivers</i>	<i>Passengers</i>	<i>Pedestrians</i>	<i>Motor cyclists (a)</i>	<i>Bicyclists (b)</i>	<i>All road users (c)</i>
1990	935	634	420	262	80	2331
1991	910	554	343	248	58	2113
1992	815	570	350	197	41	1974
1993	859	513	331	203	45	1953
1994	809	501	367	190	59	1928
1995	874	491	398	204	48	2017
1996	869	499	351	193	57	1970
1997	776	431	328	177	52	1767
1998	741	468	318	181	44	1755
1999	820	428	299	176	40	1764
2000	852	450	287	191	31	1817
2001	776	407	290	216	46	1737
2002	785	422	249	224	34	1715
2003	747	420	232	188	26	1621
2004	765	361	222	196	43	1590

(a) Includes pillion passengers.

(b) From 1989, includes pedal cycle passengers.

(c) Includes road users not separately classified.

### Road deaths by State/Territory, 1990 to 2004

	<i>NSW</i>	<i>Vic</i>	<i>Qld</i>	<i>SA</i>	<i>WA</i>	<i>Tas</i>	<i>NT</i>	<i>ACT</i>	<i>Australia</i>
1990	797	548	399	226	196	71	68	26	2331
1991	663	503	395	184	207	77	67	17	2113
1992	649	396	416	165	200	74	54	20	1974
1993	581	435	396	218	209	58	44	12	1953
1994	646	377	418	159	211	59	41	17	1928
1995	620	418	456	181	209	57	61	15	2017
1996	581	417	385	181	247	64	72	23	1970
1997	576	377	360	148	197	32	60	17	1767
1998	556	390	279	168	223	48	69	22	1755
1999	577	383	314	151	218	53	49	19	1764
2000	603	407	317	166	212	43	51	18	1817
2001	524	444	324	153	165	61	50	16	1737
2002	561	397	322	154	179	37	55	10	1715
2003	539	330	310	157	180	41	53	11	1621
2004	517	343	311	139	178	58	35	9	1590

## DEATH RATES - QUARTERLY REPORT

### Road death rates by State/Territory

	<i>NSW</i>	<i>Vic</i>	<i>Qld</i>	<i>SA</i>	<i>WA</i>	<i>Tas</i>	<i>NT</i>	<i>ACT</i>	<i>Australia</i>
Per capita (a)									
2004	7.68	6.90	8.01	9.06	8.98	12.03	17.51	2.78	7.91
1999	9.00	8.17	8.97	10.08	11.79	11.24	25.42	6.08	9.32
Per vehicle (b)									
2004	1.27	0.96	1.17	1.27	1.20	1.66	3.30	0.42	1.17
1999	1.57	1.17	1.36	1.46	1.62	1.61	4.75	0.96	1.44

(a) Annual deaths per 100,000 population: 2004 at June 30 (preliminary data); 1999 at June 30 (revised data) taken from ABS catalogue 3201.0

(b) Annual deaths per 10,000 registered motor vehicles: 2004 at Mar 31; 1999 at Oct 31 taken from ABS catalogue 9309.0.

## CHARACTERISTICS OF FATAL CRASHES

Proportion (per cent) of fatal crashes by speed limit, crash type, time of day, and time of week - two years ended June 2005 and two years ended June 2000

	<i>Speed limit (km/h) (a)</i>			<i>Time of Day</i>	
	<i>Up to 60</i>	<i>65-95</i>	<i>100+</i>	<i>Day time</i>	<i>Night-time (b)</i>
<i>Jul 2003 - Jun 2005</i>	32.4	22.6	45.0	54.5	45.5
<i>Jul 1998 - Jun 2000</i>	32.9	22.1	45.0	54.6	45.4

	<i>Crash Type</i>			<i>Time of week</i>	
	<i>Pedestrian crash</i>	<i>Other single veh. crash</i>	<i>Other multiple veh. crash</i>	<i>Week day</i>	<i>Week- end (c)</i>
<i>Jul 2003 - Jun 2005</i>	15.2	44.4	40.4	58.4	41.6
<i>Jul 1998 - Jun 2000</i>	19.6	38.5	41.9	59.6	40.4

(a) Excludes ACT

(b) 6:00 pm to 5:59 am

(c) 6:00 pm Friday to 5:59 am Monday