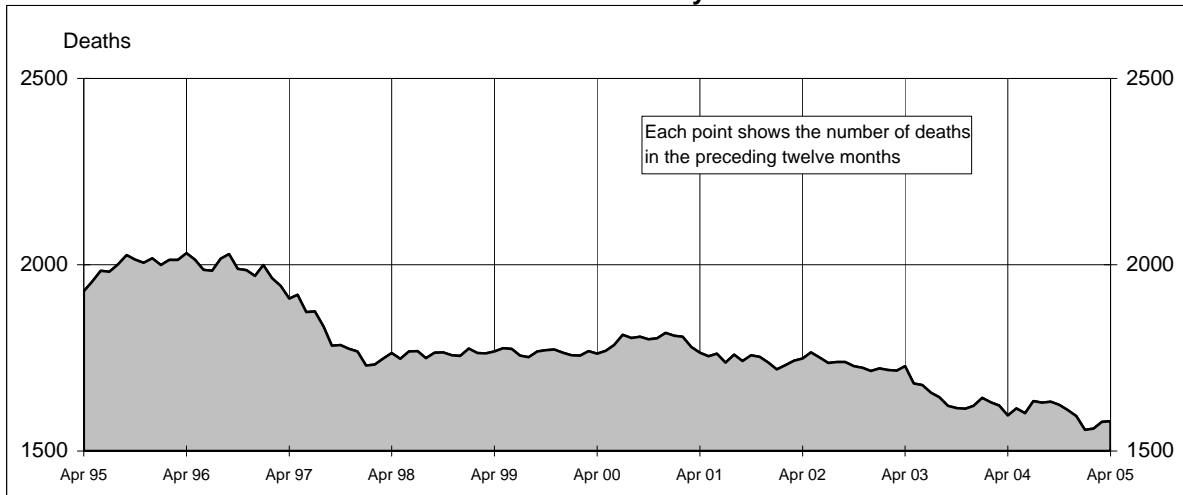
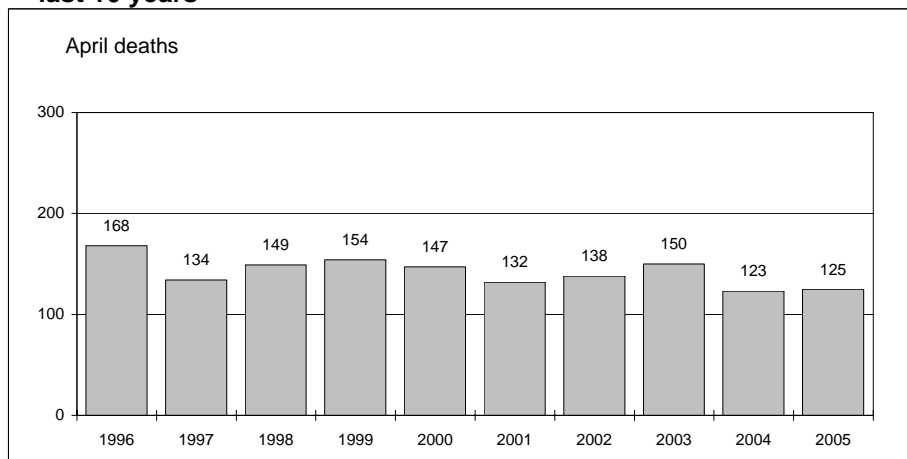




Australian road deaths for 12 months to date - last 10 years



Australian road deaths for April - last 10 years



Inquiries

For further information about data in this bulletin, contact:

The Editor
Transport Safety Statistics Unit
Australian Transport Safety Bureau
PO Box 967,
Civic Square, ACT 2608
Email: stats@atsb.gov.au
Internet: www.atsb.gov.au

Data Sources

The data presented here are obtained from the following sources:

Roads and Traffic Authority, NSW
Vicroads
Queensland Transport
South Australian Police Department
Western Australian Police Service
Department of Infrastructure, Energy and Resources, Tasmania
Northern Territory Police,
Fire & Emergency Services
Department of Urban Services, ACT

Note

Road death statistics for recent months are preliminary and subject to revision. They include any deaths occurring within 30 days of a crash stemming from injuries received in the crash.

© Australian Government

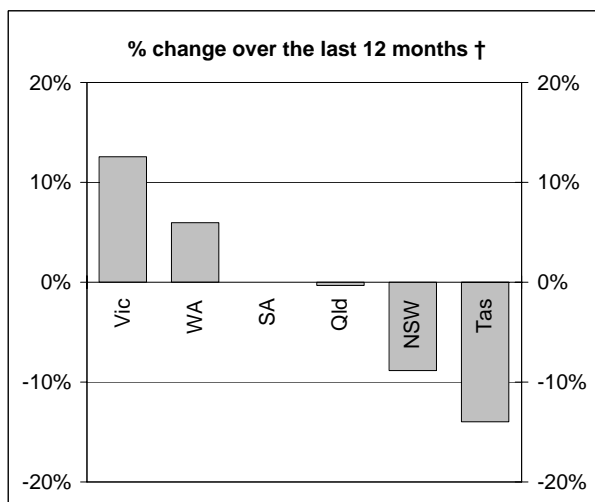
This month's key figures

The total number of road deaths in April 2005 was 125
- this is a 1.6% increase over the April 2004 figure.

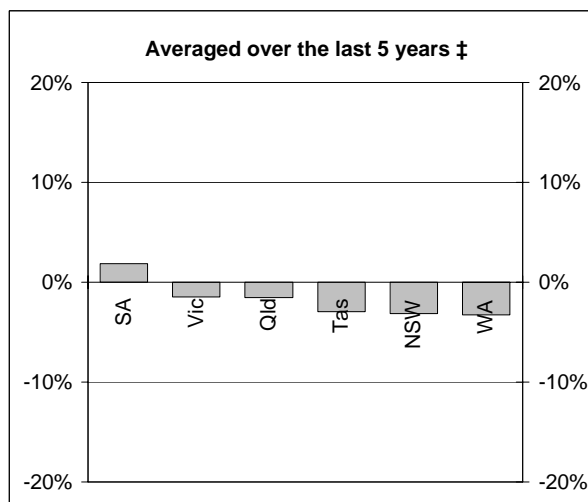
The number of road deaths in 2005 to the end of April is 516
- this is a 2.6% decrease from the same 4 month period in 2004.

NUMBER OF ROAD CRASH DEATHS

Percentage change in road deaths in each State



† Percentage change between the 12-month periods of May 2003 - Apr 2004 and May 2004 - Apr 2005



‡ Average annual percentage change over each of the 12-month periods from May 1999 - Apr 2000 to May 2004 - Apr 2005

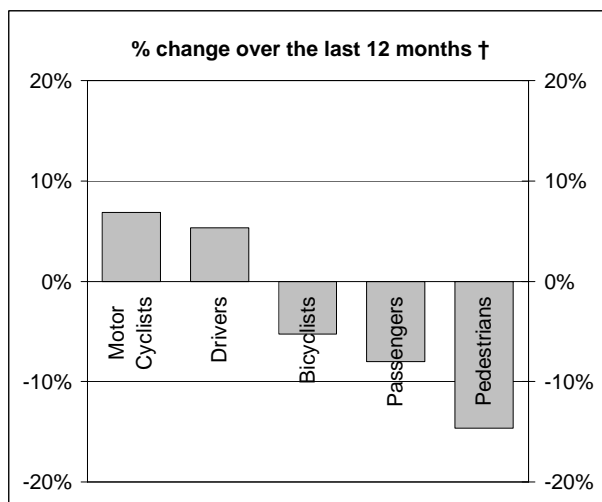
Road deaths by State/Territory for month, year to date, and twelve months - period ended April 2005 and period ended April 2004

	NSW	Vic	Qld	SA	WA	Tas	NT	ACT	Australia
Current month									
Apr 2005	41	20	31	8	17	0	4	4	125
Apr 2004	34	30	28	10	14	5	1	1	123
% change	20.6	-33.3	10.7	-20.0	21.4	-100.0	300.0	300.0	1.6
Year to date									
Jan 2005 - Apr 2005	156	129	93	50	59	8	13	8	516
Jan 2004 - Apr 2004	182	114	96	41	59	23	11	4	530
% change	-14.3	13.2	-3.1	22.0	0.0	-65.2	18.2	100.0	-2.6
12-months to date									
May 2004 - Apr 2005	495	358	308	148	178	43	37	13	1580
May 2003 - Apr 2004	543	318	309	148	168	50	47	12	1595
Difference	-48	40	-1	0	10	-7	-10	1	-15
% change	-8.8	12.6	-0.3	0.0	6.0	-14.0	-21.3	8.3	-0.9
Ave annual % change (a)									
Apr 2000 to Apr 2005	-3.2	-1.5	-1.5	1.9	-3.3	-3.0	-6.2	-2.8	-2.1

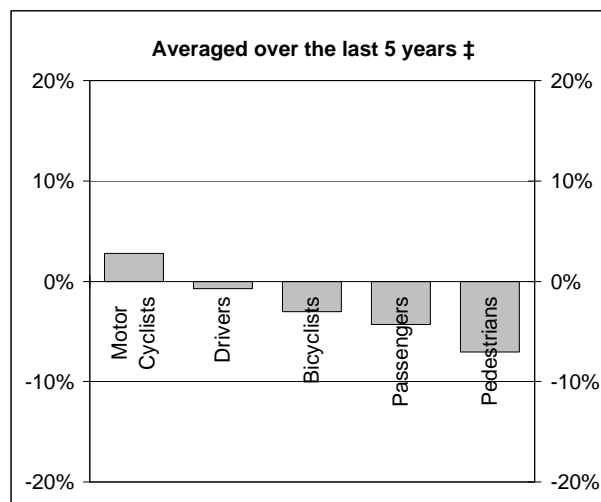
(a) This represents the average annual exponential change between the annual count of 5 years ago and the current annual count

DEATHS IN EACH ROAD USER GROUP

Percentage change in deaths in each road user group



† Percentage change between the 12-month periods of May 2003 - Apr 2004 and May 2004 - Apr 2005



‡ Average annual percentage change over each of the 12-month periods from May 1999 - Apr 2000 to May 2004 - Apr 2005

Road deaths by road user group and gender for twelve months ended April 2005 and twelve months ended April 2004

	Drivers	Passengers	Pedestrians	Motor cyclists (a)	Bicyclists	All road users (b)
Males						
May 2004 - Apr 2005	606	190	133	187	33	1154
May 2003 - Apr 2004	556	194	169	175	31	1130
% change	9.0	-2.1	-21.3	6.9	6.5	2.1
Females						
May 2004 - Apr 2005	169	166	71	15	3	426
May 2003 - Apr 2004	180	192	70	14	7	464
% change	-6.1	-13.5	1.4	7.1	-57.1	-8.2
Persons (c)						
May 2004 - Apr 2005	775	356	204	202	36	1580
May 2003 - Apr 2004	736	387	239	189	38	1595
% change	5.3	-8.0	-14.6	6.9	-5.3	-0.9
Ave annual % change (d)						
Apr 2000 to Apr 2005	-0.7	-4.3	-7.0	2.8	-3.0	-2.1

(a) Includes pillion passengers

(b) Includes road users not separately specified

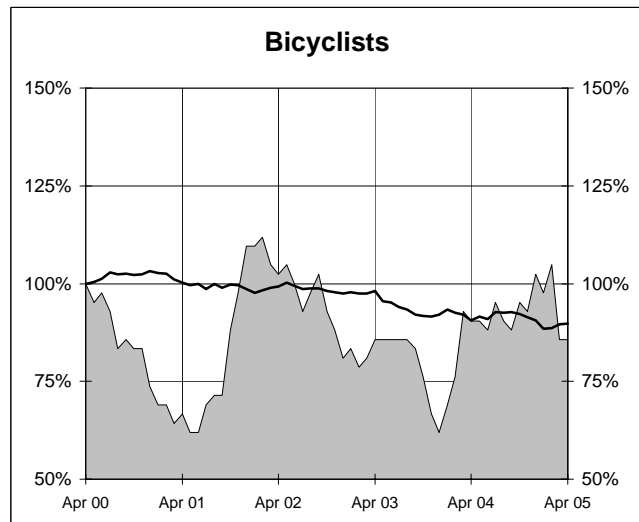
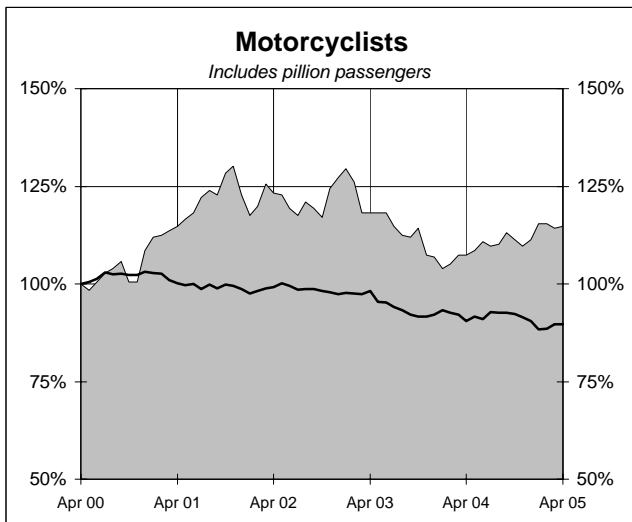
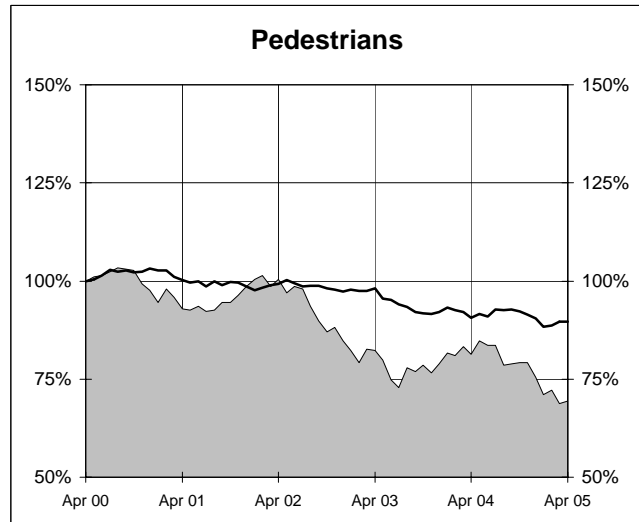
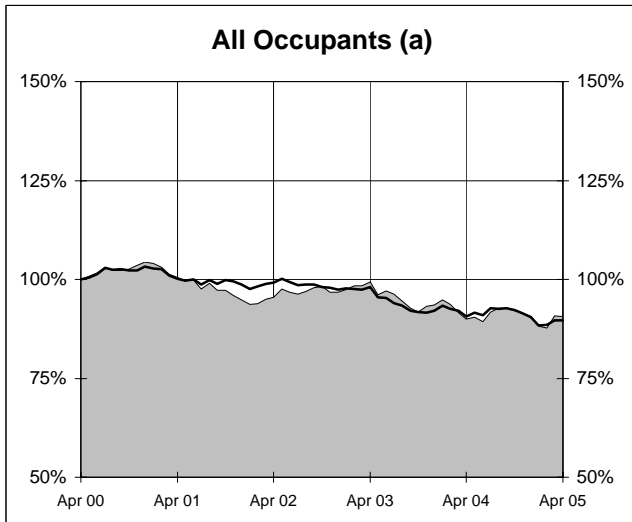
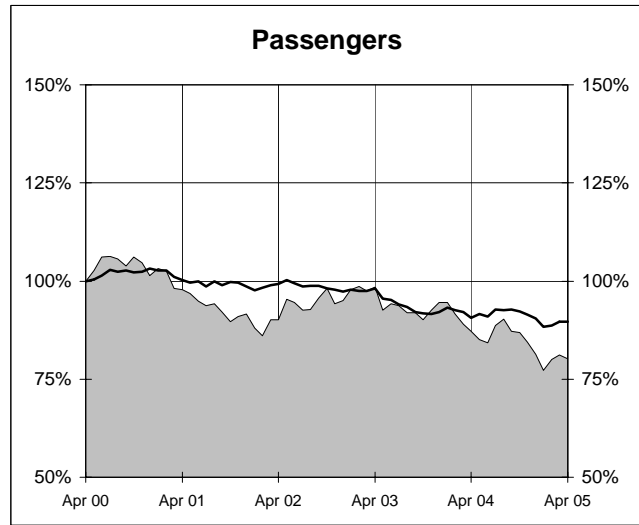
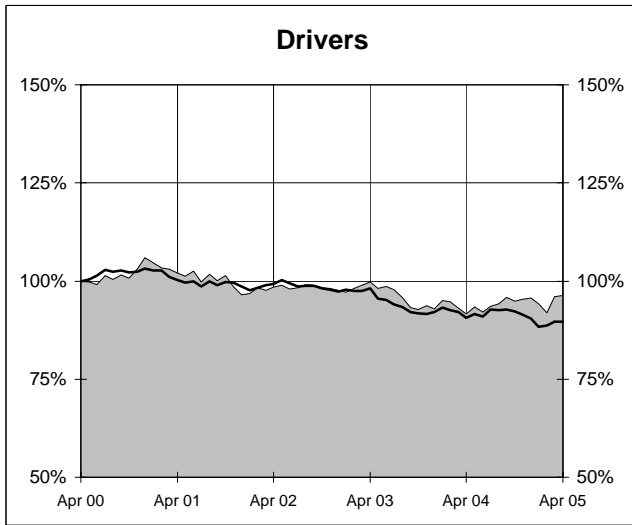
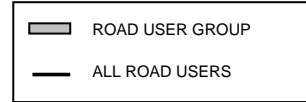
(c) Includes road users with unstated gender

(d) This represents the average annual exponential change between the annual count of 5 years ago and the current annual count

DEATHS IN EACH ROAD USER GROUP - TRENDS

Annual deaths in each road user group - last 5 years

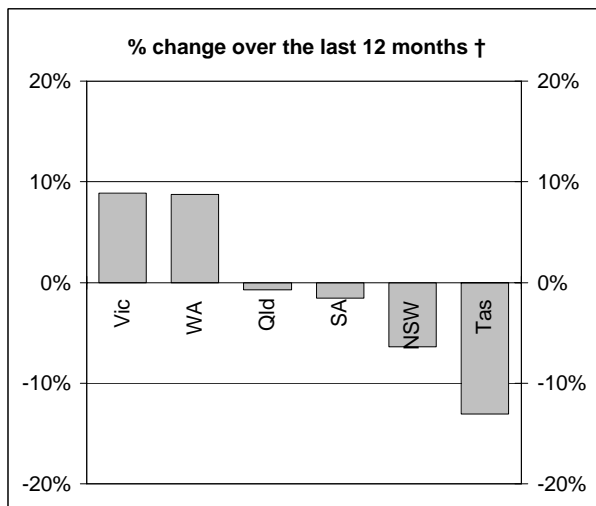
The number shown at each month represents the number of deaths in the preceding 12 months expressed as a percentage of the number of deaths in the 12 months to April 2000.



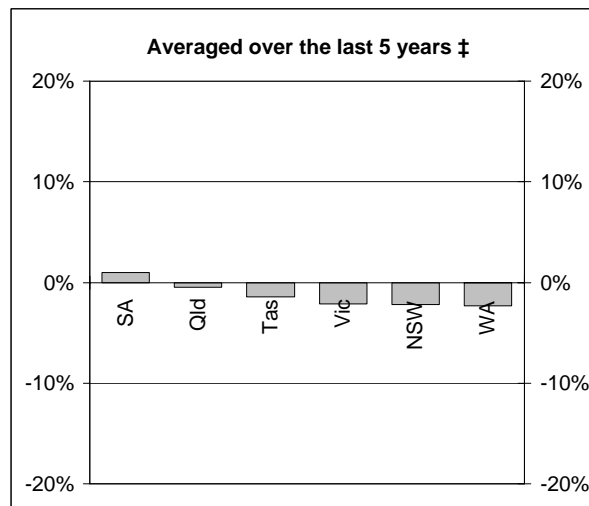
(a) Includes drivers and passengers

NUMBER OF FATAL ROAD CRASHES

Percentage change in fatal crashes in each State



† Percentage change between the 12-month periods of May 2003 - Apr 2004 and May 2004 - Apr 2005



‡ Average annual percentage change over each of the 12-month periods from May 1999 - Apr 2000 to May 2004 - Apr 2005

Fatal crashes by State/Territory for month, year to date and twelve months - period ended April 2005 and period ended April 2004

	NSW	Vic	Qld	SA	WA	Tas	NT	ACT	Australia
Current month									
Apr 2005	40	20	26	7	17	0	4	4	118
Apr 2004	30	28	25	10	12	4	1	1	111
% change	33.3	-28.6	4.0	-30.0	41.7	-100.0	300.0	300.0	6.3
Year to date									
Jan 2005 - Apr 2005	146	115	84	41	55	8	11	8	468
Jan 2004 - Apr 2004	162	107	90	40	55	20	11	4	489
% change	-9.9	7.5	-6.7	2.5	0.0	-60.0	0.0	100.0	-4.3
12 months to date									
May 2004 - Apr 2005	453	320	283	129	162	40	34	13	1434
May 2003 - Apr 2004	484	294	285	131	149	46	41	12	1442
% change	-6.4	8.8	-0.7	-1.5	8.7	-13.0	-17.1	8.3	-0.6
Ave annual % change (a)									
Apr 2000 to Apr 2005	-2.2	-2.1	-0.5	1.0	-2.3	-1.4	-6.3	1.6	-1.7

(a) This represents the average annual exponential change between the annual count of 5 years ago and the current annual count

FATAL CRASHES INVOLVING TRUCKS AND BUSES

Fatal crashes and deaths involving articulated trucks and buses - twelve months ended April 2005 and twelve months ended April 2004

	NSW	Vic	Qld	SA	WA	Tas	NT	ACT	Australia
--	-----	-----	-----	----	----	-----	----	-----	-----------

FATAL CRASHES INVOLVING ARTICULATED TRUCKS

Number of crashes

May 2004 - Apr 2005	49	25	14	10	11	3	1	0	113
May 2003 - Apr 2004	56	34	25	8	14	3	1	1	142
									(-20.4%)

Number of deaths

May 2004 - Apr 2005	53	26	15	14	11	3	1	0	123
May 2003 - Apr 2004	71	38	28	8	17	3	1	1	167
									(-26.3%)

Note: Data on heavy rigid trucks not currently available

FATAL CRASHES INVOLVING BUSES

Number of crashes

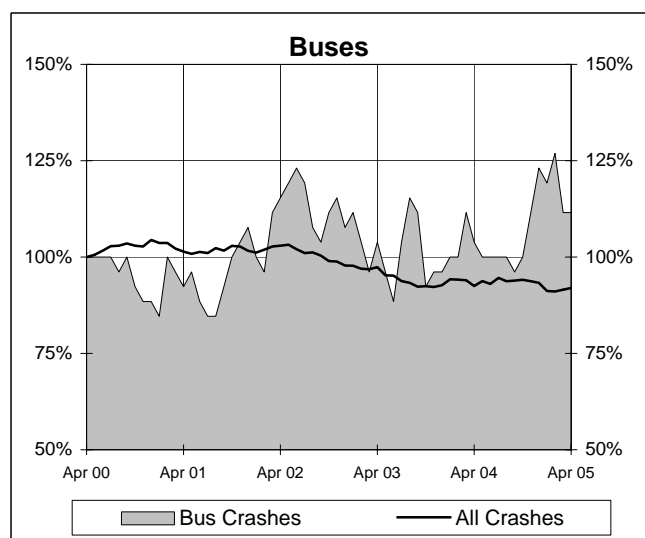
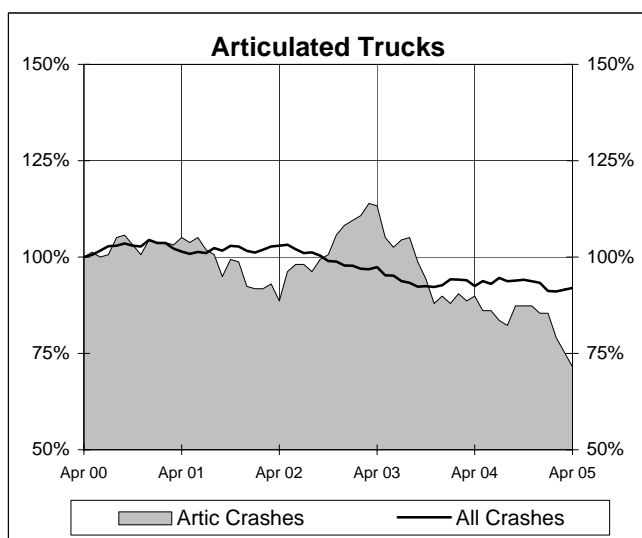
May 2004 - Apr 2005	19	4	2	3	1	0	0	0	29
May 2003 - Apr 2004	11	3	6	2	2	1	1	1	27
									(+7.4%)

Number of deaths

May 2004 - Apr 2005	19	4	2	3	1	0	0	0	29
May 2003 - Apr 2004	12	3	6	3	2	1	1	1	29
									(+0.0%)

Annual count of fatal crashes involving articulated trucks and buses - last 5 years

The number shown at each month represents the number of fatal crashes in the preceding 12 months expressed as a percentage of the number of fatal crashes in the 12 months to April 2000.



CHARACTERISTICS OF FATAL CRASHES

Proportion (per cent) of fatal crashes by speed limit, crash type, time of day, and time of week - two years ended April 2005 and two years ended April 2000

	<i>Speed limit (km/h) (a)</i>			<i>Time of Day</i>	
	<i>Up to 60</i>	<i>65-95</i>	<i>100+</i>	<i>Day time</i>	<i>Night-time (b)</i>
<i>May 2003 - Apr 2005</i>	31.9	23.2	44.9	54.3	45.7
<i>May 1998 - Apr 2000</i>	33.1	22.0	44.9	54.6	45.4

	<i>Crash Type</i>			<i>Time of week</i>	
	<i>Pedestrian crash</i>	<i>Other single veh. crash</i>	<i>Other multiple veh. crash</i>	<i>Week day</i>	<i>Week- end (c)</i>
<i>May 2003 - Apr 2005</i>	15.2	44.6	40.2	58.8	41.2
<i>May 1998 - Apr 2000</i>	19.8	38.5	41.8	59.3	40.7

(a) Excludes ACT

(b) 6:00 pm to 5:59 am

(c) 6:00 pm Friday to 5:59 am Monday