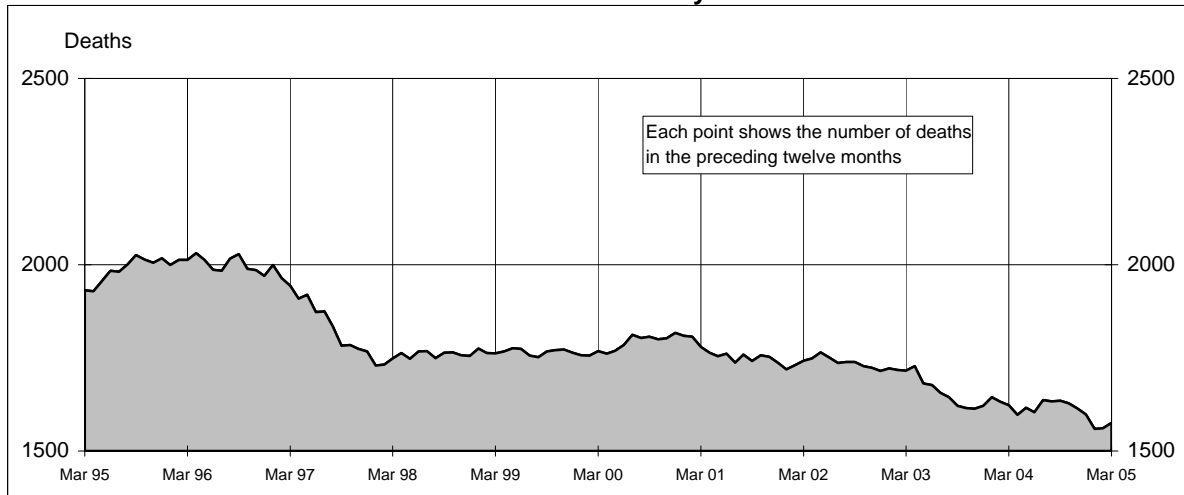
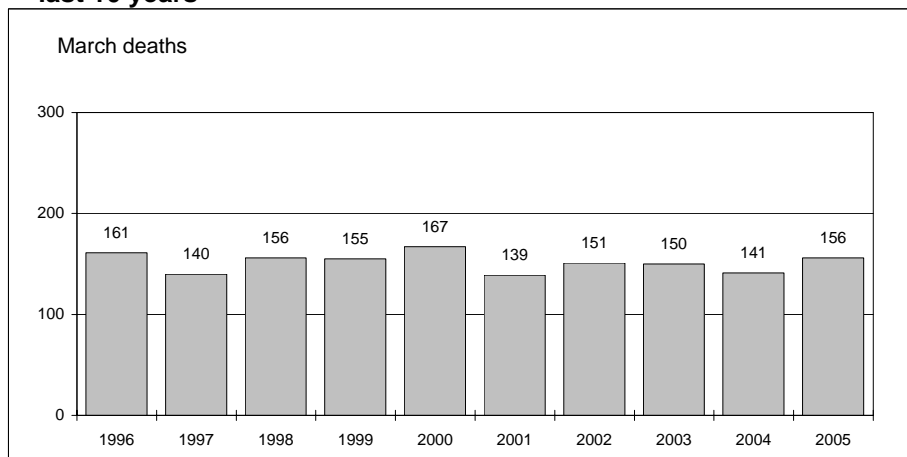




Australian road deaths for 12 months to date - last 10 years



Australian road deaths for March - last 10 years



Inquiries

For further information about data in this bulletin, contact:

The Editor
Transport Safety Statistics Unit
Australian Transport Safety Bureau
PO Box 967,
Civic Square, ACT 2608

Email: stats@atsb.gov.au
Internet: www.atsb.gov.au

Data Sources

The data presented here are obtained from the following sources:

Roads and Traffic Authority, NSW
Vicroads
Queensland Transport
South Australian Police Department
Western Australian Police Service
Department of Infrastructure,
Energy and Resources, Tasmania
Northern Territory Police,
Fire & Emergency Services
Department of Urban Services, ACT

Note

Road death statistics for recent months are preliminary and subject to revision. They include any deaths occurring within 30 days of a crash stemming from injuries received in the crash.

© Australian Government

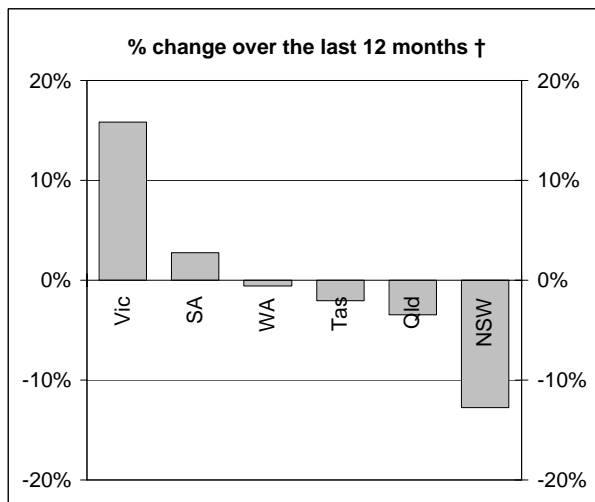
This month's key figures

The total number of road deaths in March 2005 was 156
- this is a 10.6% increase over the March 2004 figure.

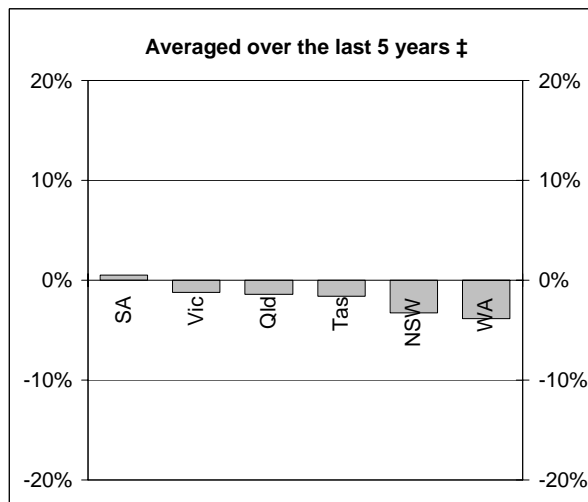
The number of road deaths in 2005 to the end of March is 386
- this is a 5.4% decrease from the same 3 month period in 2004.

NUMBER OF ROAD CRASH DEATHS

Percentage change in road deaths in each State



† Percentage change between the 12-month periods of Apr 2003 - Mar 2004 and Apr 2004 - Mar 2005



‡ Average annual percentage change over each of the 12-month periods from Apr 1999 - Mar 2000 to Apr 2004 - Mar 2005

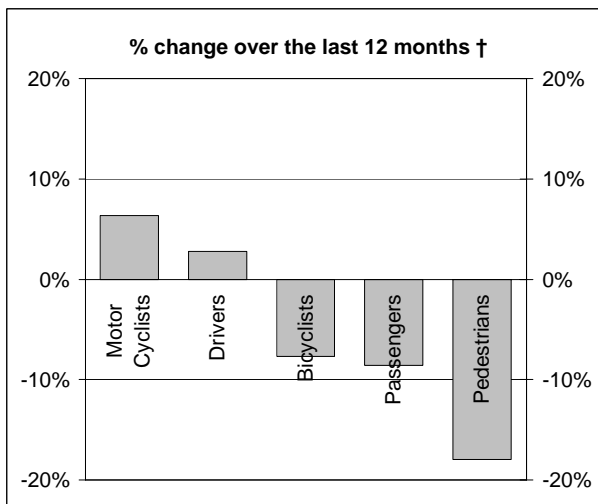
Road deaths by State/Territory for month, year to date, and twelve months - period ended March 2005 and period ended March 2004

	NSW	Vic	Qld	SA	WA	Tas	NT	ACT	Australia
Current month									
Mar 2005	36	47	24	28	14	2	4	1	156
Mar 2004	50	30	30	8	15	5	2	1	141
% change	-28.0	56.7	-20.0	250.0	-6.7	-60.0	100.0	0.0	10.6
Year to date									
Jan 2005 - Mar 2005	112	107	62	42	42	8	9	4	386
Jan 2004 - Mar 2004	149	84	68	31	45	18	10	3	408
% change	-24.8	27.4	-8.8	35.5	-6.7	-55.6	-10.0	33.3	-5.4
12-months to date									
Apr 2004 - Mar 2005	486	366	306	150	175	48	34	11	1576
Apr 2003 - Mar 2004	557	316	317	146	176	49	51	11	1623
Difference	-71	50	-11	4	-1	-1	-17	0	-47
% change	-12.7	15.8	-3.5	2.7	-0.6	-2.0	-33.3	0.0	-2.9
Ave annual % change (a)									
Mar 2000 to Mar 2005	-3.2	-1.2	-1.4	0.5	-3.9	-1.6	-7.0	-8.3	-2.3

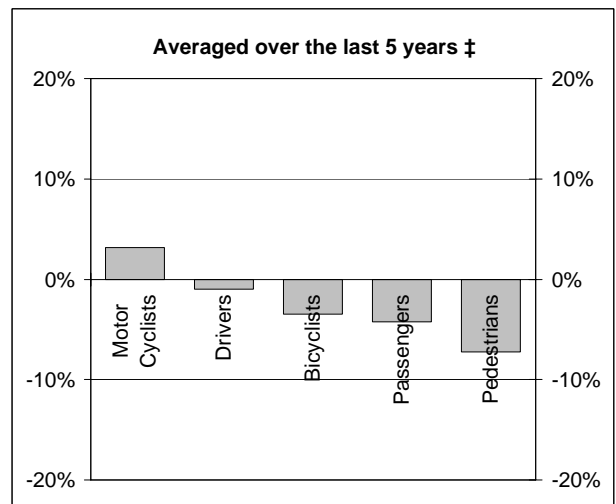
(a) This represents the average annual exponential change between the annual count of 5 years ago and the current annual count

DEATHS IN EACH ROAD USER GROUP

Percentage change in deaths in each road user group



† Percentage change between the 12-month periods of Apr 2003 - Mar 2004 and Apr 2004 - Mar 2005



‡ Average annual percentage change over each of the 12-month periods from Apr 1999 - Mar 2000 to Apr 2004 - Mar 2005

Road deaths by road user group and gender for twelve months ended March 2005 and twelve months ended March 2004

	Drivers	Passengers	Pedestrians	Motor cyclists (a)	Bicyclists	All road users (b)
Males						
Apr 2004 - Mar 2005	594	190	132	186	33	1140
Apr 2003 - Mar 2004	577	208	171	175	32	1168
% change	2.9	-8.7	-22.8	6.3	3.1	-2.4
Females						
Apr 2004 - Mar 2005	176	171	69	15	3	436
Apr 2003 - Mar 2004	172	186	74	14	7	454
% change	2.3	-8.1	-6.8	7.1	-57.1	-4.0
Persons (c)						
Apr 2004 - Mar 2005	770	361	201	201	36	1576
Apr 2003 - Mar 2004	749	395	245	189	39	1623
% change	2.8	-8.6	-18.0	6.3	-7.7	-2.9
Ave annual % change (d)						
Mar 2000 to Mar 2005	-1.0	-4.3	-7.3	3.2	-3.5	-2.3

(a) Includes pillion passengers

(b) Includes road users not separately specified

(c) Includes road users with unstated gender

(d) This represents the average annual exponential change between the annual count of 5 years ago and the current annual count

DEATHS IN EACH ROAD USER GROUP - QUARTERLY REPORT

Road deaths by road user group and State/Territory for twelve months ended March 2005 and twelve months ended March 2004

	NSW	Vic	Qld	SA	WA	Tas	NT	ACT	Australia
Drivers									
Apr 2004 - Mar 2005	239	184	141	81	82	23	16	4	770
Apr 2003 - Mar 2004	233	156	144	77	90	24	20	5	749
% change	2.6	17.9	-2.1	5.2	-8.9	-4.2	-20.0	-	2.8
<i>Ave annual % change (a)</i>									
Mar 2000 to Mar 2005	-0.7	-0.6	0.3	3.6	-5.4	-2.4	-6.2	-	-1.0
Passengers									
Apr 2004 - Mar 2005	101	90	70	32	45	13	10	0	361
Apr 2003 - Mar 2004	142	70	73	35	48	10	15	2	395
% change	-28.9	28.6	-4.1	-8.6	-6.3	30.0	-33.3	-	-8.6
<i>Ave annual % change (a)</i>									
Mar 2000 to Mar 2005	-7.8	3.4	-4.5	-1.2	-7.1	-4.1	-6.5	-	-4.3
Pedestrians									
Apr 2004 - Mar 2005	77	46	31	12	23	4	5	3	201
Apr 2003 - Mar 2004	106	43	52	13	14	3	11	3	245
% change	-27.4	7.0	-40.4	-7.7	64.3	33.3	-54.5	-	-18.0
<i>Ave annual % change (a)</i>									
Mar 2000 to Mar 2005	-6.9	-9.3	-8.0	-9.7	-1.7	-7.8	-9.0	-	-7.3
Motor cyclists (b)									
Apr 2004 - Mar 2005	58	39	55	20	19	7	0	3	201
Apr 2003 - Mar 2004	61	38	38	17	23	11	0	1	189
% change	-4.9	2.6	44.7	17.6	-17.4	-36.4	-	-	6.3
<i>Ave annual % change (a)</i>									
Mar 2000 to Mar 2005	2.2	1.1	6.1	0.0	4.8	18.5	-	-	3.2
Bicyclists									
Apr 2004 - Mar 2005	11	7	7	3	5	1	1	1	36
Apr 2003 - Mar 2004	15	8	10	4	1	1	0	0	39
All road users (c)									
Apr 2004 - Mar 2005	486	366	306	150	175	48	34	11	1576
Apr 2003 - Mar 2004	557	316	317	146	176	49	51	11	1623
% change	-12.7	15.8	-3.5	2.7	-0.6	-2.0	-33.3	0.0	-2.9
<i>Ave annual % change (a)</i>									
Mar 2000 to Mar 2005	-3.2	-1.2	-1.4	0.5	-3.9	-1.6	-7.0	-8.3	-2.3

(a) This represents the average annual exponential change between the annual count of 5-years ago and the current annual count

(b) Includes pillion passengers

(c) Includes road users not separately classified

DEATHS IN EACH ROAD USER GROUP - QUARTERLY REPORT

Road deaths by road user group and age for twelve months ended
March 2005 and twelve months ended March 2004

	0-16 years	17-20 years	21-25 years	26-39 years	40-59 years	60+ years	All fatalities(d)
Drivers							
Apr 2004 - Mar 2005	6	119	95	182	202	165	770
Apr 2003 - Mar 2004	10	95	105	183	211	144	749
% change	-40.0	25.3	-9.5	-0.5	-4.3	14.6	2.8
<i>Ave annual % change (a)</i>							
Mar 2000 to Mar 2005	-3.0	-1.3	0.0	-6.2	3.4	0.9	-1.0
Passengers							
Apr 2004 - Mar 2005	63	80	45	46	57	69	361
Apr 2003 - Mar 2004	90	82	36	64	42	80	395
% change	-30.0	-2.4	25.0	-28.1	35.7	-13.8	-8.6
<i>Ave annual % change (a)</i>							
Mar 2000 to Mar 2005	-7.7	-4.0	-5.9	-4.2	1.9	-2.9	-4.3
Pedestrians							
Apr 2004 - Mar 2005	20	13	17	41	38	69	201
Apr 2003 - Mar 2004	25	15	15	48	49	93	245
% change	-20.0	-13.3	13.3	-14.6	-22.4	-25.8	-18.0
<i>Ave annual % change (a)</i>							
Mar 2000 to Mar 2005	-11.1	-10.8	-5.9	-2.3	-7.1	-8.9	-7.3
Motor cyclists (b)							
Apr 2004 - Mar 2005	7	26	33	79	50	5	201
Apr 2003 - Mar 2004	6	17	30	78	50	8	189
% change	16.7	52.9	10.0	1.3	0.0	-37.5	6.3
<i>Ave annual % change (a)</i>							
Mar 2000 to Mar 2005	7.0	11.6	2.6	-1.7	6.8	38.0	3.2
Bicyclists							
Apr 2004 - Mar 2005	8	1	1	11	8	7	36
Apr 2003 - Mar 2004	10	1	1	9	11	7	39
All road users (c)							
Apr 2004 - Mar 2005	104	239	193	360	358	316	1576
Apr 2003 - Mar 2004	141	212	187	383	364	332	1623
% change	-26.2	12.7	3.2	-6.0	-1.6	-4.8	-2.9
<i>Ave annual % change (a)</i>							
Mar 2000 to Mar 2005	-7.2	-2.0	-1.7	-4.3	1.8	-2.5	-2.3

(a) This represents the average annual exponential change between the annual count of 5-years ago and the current annual count

(b) Includes pillion passengers

(c) Includes road users not separately classified

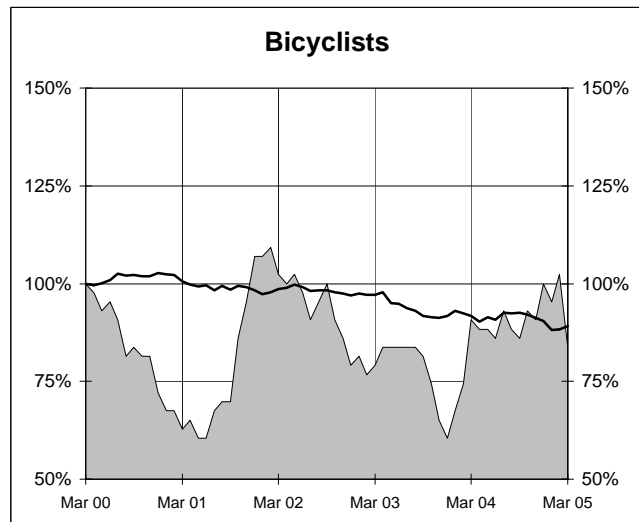
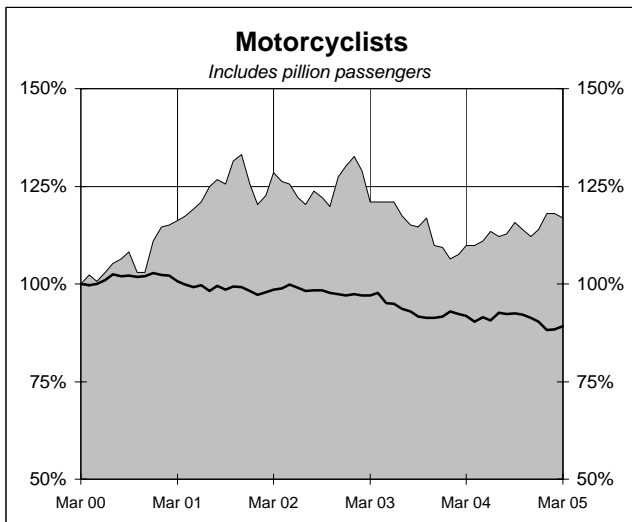
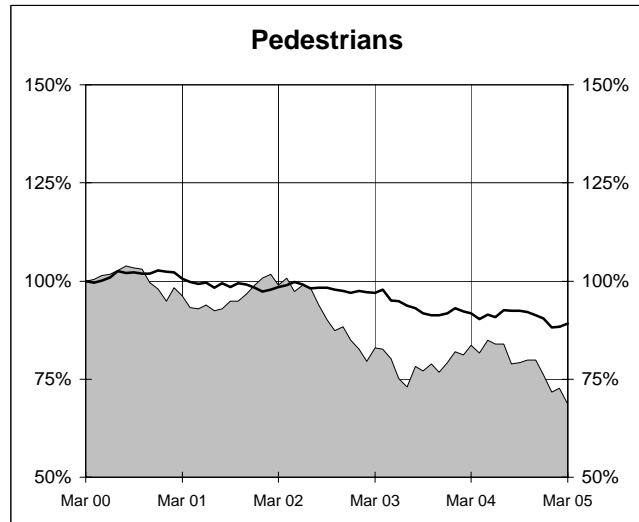
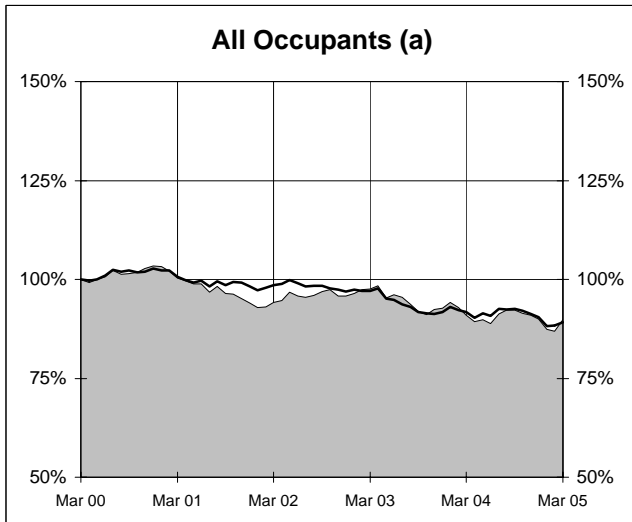
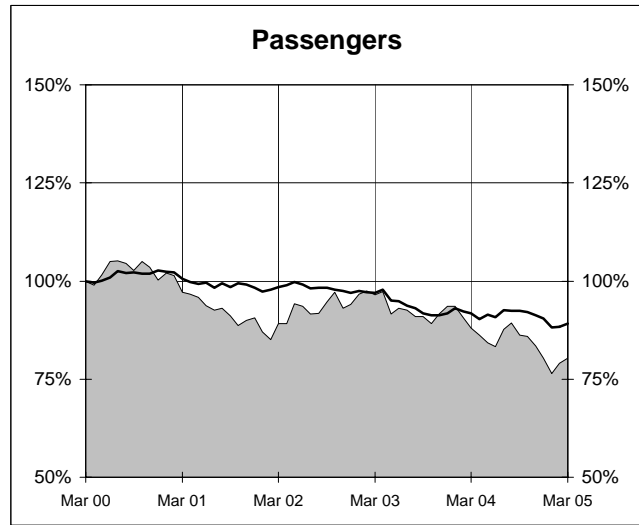
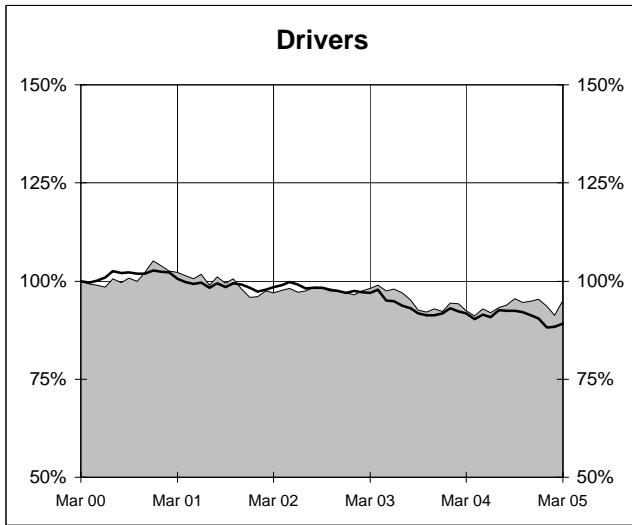
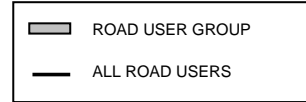
(d) Includes deaths with unstated age

- Percentage change not calculated

DEATHS IN EACH ROAD USER GROUP - TRENDS

Annual deaths in each road user group - last 5 years

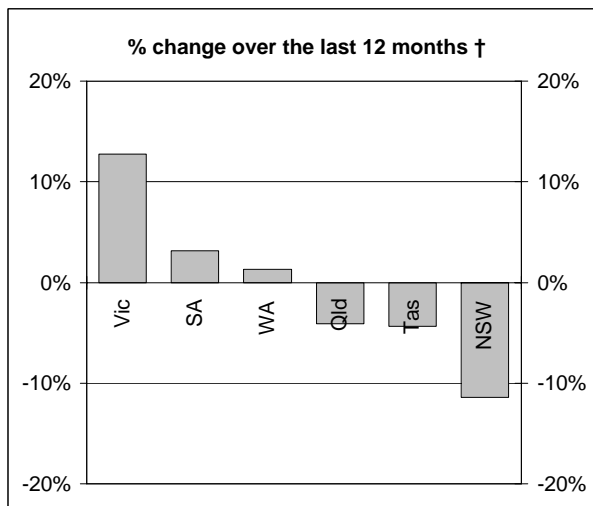
The number shown at each month represents the number of deaths in the preceding 12 months expressed as a percentage of the number of deaths in the 12 months to March 2000.



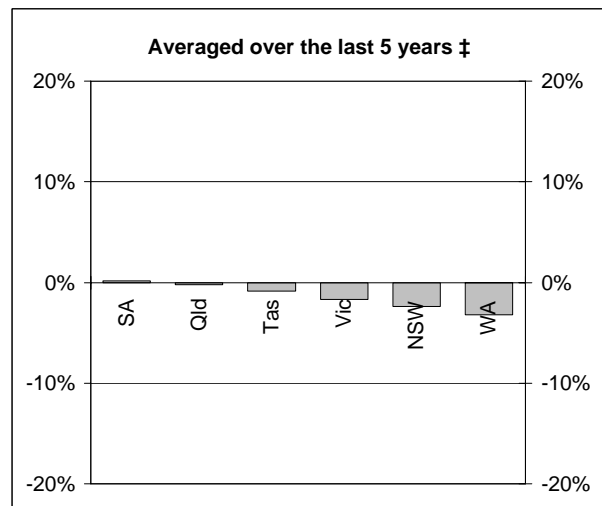
(a) Includes drivers and passengers

NUMBER OF FATAL ROAD CRASHES

Percentage change in fatal crashes in each State



† Percentage change between the 12-month periods of Apr 2003 - Mar 2004 and Apr 2004 - Mar 2005



‡ Average annual percentage change over each of the 12-month periods from Apr 1999 - Mar 2000 to Apr 2004 - Mar 2005

Fatal crashes by State/Territory for month, year to date and twelve months - period ended March 2005 and period ended March 2004

	NSW	Vic	Qld	SA	WA	Tas	NT	ACT	Australia
Current month									
Mar 2005	33	41	23	21	14	2	3	1	138
Mar 2004	46	29	28	8	14	5	2	1	133
% change	-28.3	41.4	-17.9	162.5	0.0	-60.0	50.0	0.0	3.8
Year to date									
Jan 2005 - Mar 2005	103	94	58	34	38	8	7	4	346
Jan 2004 - Mar 2004	133	79	65	30	43	16	10	3	379
% change	-22.6	19.0	-10.8	13.3	-11.6	-50.0	-30.0	33.3	-8.7
12 months to date									
Apr 2004 - Mar 2005	441	327	282	132	157	44	31	11	1425
Apr 2003 - Mar 2004	498	290	294	128	155	46	44	11	1466
% change	-11.4	12.8	-4.1	3.1	1.3	-4.3	-29.5	0.0	-2.8
Ave annual % change (a)									
Mar 2000 to Mar 2005	-2.4	-1.7	-0.2	0.2	-3.2	-0.9	-7.2	-4.7	-1.8

(a) This represents the average annual exponential change between the annual count of 5 years ago and the current annual count

FATAL CRASHES INVOLVING TRUCKS AND BUSES

Fatal crashes and deaths involving articulated trucks and buses -
twelve months ended March 2005 and twelve months ended March 2004

	NSW	Vic	Qld	SA	WA	Tas	NT	ACT	Australia
--	-----	-----	-----	----	----	-----	----	-----	-----------

FATAL CRASHES INVOLVING ARTICULATED TRUCKS

Number of crashes

Apr 2004 - Mar 2005	50	26	14	11	11	3	1	0	116
Apr 2003 - Mar 2004	54	34	26	7	14	3	1	1	140
									(-17.1%)

Number of deaths

Apr 2004 - Mar 2005	55	27	15	15	11	3	1	0	127
Apr 2003 - Mar 2004	69	38	29	7	17	3	1	1	165
									(-23.0%)

Note: Data on heavy rigid trucks not currently available

FATAL CRASHES INVOLVING BUSES

Number of crashes

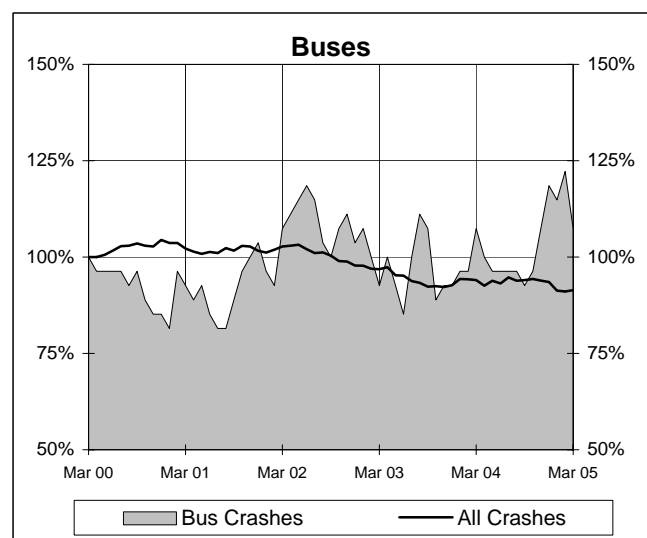
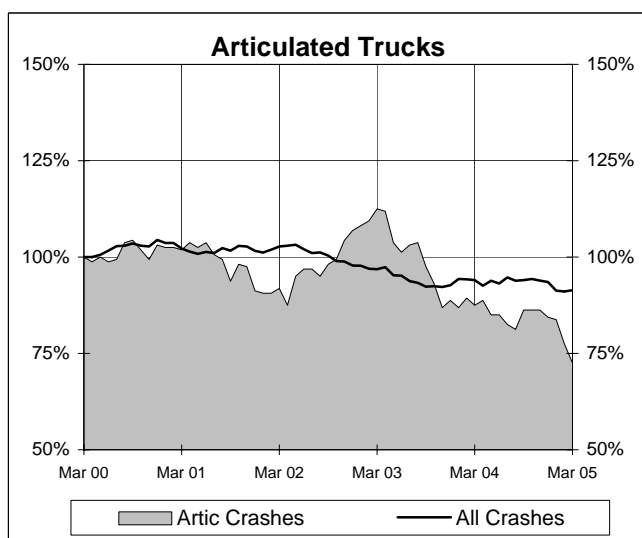
Apr 2004 - Mar 2005	17	4	4	3	1	0	0	0	29
Apr 2003 - Mar 2004	12	5	5	2	2	1	1	1	29
									(+0.0%)

Number of deaths

Apr 2004 - Mar 2005	17	4	4	3	1	0	0	0	29
Apr 2003 - Mar 2004	13	5	5	3	2	1	1	1	31
									(-6.5%)

Annual count of fatal crashes involving articulated trucks and buses - last 5 years

The number shown at each month represents the number of fatal crashes in the preceding 12 months expressed as a percentage of the number of fatal crashes in the 12 months to March 2000.



TIME SERIES - QUARTERLY REPORT

Road deaths by road user group, 1990 to 2004

	<i>Drivers</i>	<i>Passengers</i>	<i>Pedestrians</i>	<i>Motor cyclists (a)</i>	<i>Bicyclists (b)</i>	<i>All road users (c)</i>
1990	935	634	420	262	80	2331
1991	910	554	343	248	58	2113
1992	815	570	350	197	41	1974
1993	859	513	331	203	45	1953
1994	809	501	367	190	59	1928
1995	874	491	398	204	48	2017
1996	869	499	351	193	57	1970
1997	776	431	328	177	52	1767
1998	741	468	318	181	44	1755
1999	820	428	299	176	40	1764
2000	852	450	287	191	31	1817
2001	776	407	290	216	46	1737
2002	785	422	249	224	34	1715
2003	747	420	232	188	26	1621
2004	772	361	223	196	43	1598

(a) Includes pillion passengers.

(b) From 1989, includes pedal cycle passengers.

(c) Includes road users not separately classified.

Road deaths by State/Territory, 1990 to 2004

	<i>NSW</i>	<i>Vic</i>	<i>Qld</i>	<i>SA</i>	<i>WA</i>	<i>Tas</i>	<i>NT</i>	<i>ACT</i>	<i>Australia</i>
1990	797	548	399	226	196	71	68	26	2331
1991	663	503	395	184	207	77	67	17	2113
1992	649	396	416	165	200	74	54	20	1974
1993	581	435	396	218	209	58	44	12	1953
1994	646	377	418	159	211	59	41	17	1928
1995	620	418	456	181	209	57	61	15	2017
1996	581	417	385	181	247	64	72	23	1970
1997	576	377	360	148	197	32	60	17	1767
1998	556	390	279	168	223	48	69	22	1755
1999	577	383	314	151	218	53	49	19	1764
2000	603	407	317	166	212	43	51	18	1817
2001	524	444	324	153	165	61	50	16	1737
2002	561	397	322	154	179	37	55	10	1715
2003	539	330	310	157	180	41	53	11	1621
2004	523	343	312	139	178	58	35	10	1598

DEATH RATES - QUARTERLY REPORT

Road death rates by State/Territory

	<i>NSW</i>	<i>Vic</i>	<i>Qld</i>	<i>SA</i>	<i>WA</i>	<i>Tas</i>	<i>NT</i>	<i>ACT</i>	<i>Australia</i>
Per capita (a)									
2004	7.77	6.90	8.04	9.06	8.98	12.03	17.51	3.09	7.95
1999	9.00	8.17	8.97	10.08	11.79	11.24	25.42	6.08	9.32
Per vehicle (b)									
2004	1.29	0.96	1.17	1.27	1.20	1.66	3.30	0.46	1.18
1999	1.57	1.17	1.36	1.46	1.62	1.61	4.75	0.96	1.44

(a) Annual deaths per 100,000 population: 2004 at June 30 (preliminary data); 1999 at June 30 (revised data) taken from ABS catalogue 3201.0

(b) Annual deaths per 10,000 registered motor vehicles: 2004 at Mar 31; 1999 at Oct 31 taken from ABS catalogue 9309.0.

CHARACTERISTICS OF FATAL CRASHES

Proportion (per cent) of fatal crashes by speed limit, crash type, time of day, and time of week - two years ended March 2005 and two years ended March 2000

	<i>Speed limit (km/h) (a)</i>			<i>Time of Day</i>	
	<i>Up to 60</i>	<i>65-95</i>	<i>100+</i>	<i>Day time</i>	<i>Night-time (b)</i>
<i>Apr 2003 - Mar 2005</i>	32.9	22.5	44.5	55.1	44.9
<i>Apr 1998 - Mar 2000</i>	33.1	21.8	45.1	54.5	45.5

	<i>Crash Type</i>			<i>Time of week</i>	
	<i>Pedestrian crash</i>	<i>Other single veh. crash</i>	<i>Other multiple veh. crash</i>	<i>Week day</i>	<i>Week-end (c)</i>
<i>Apr 2003 - Mar 2005</i>	15.2	44.8	40.1	59.0	41.0
<i>Apr 1998 - Mar 2000</i>	19.7	38.4	41.9	59.3	40.7

(a) Excludes ACT

(b) 6:00 pm to 5:59 am

(c) 6:00 pm Friday to 5:59 am Monday