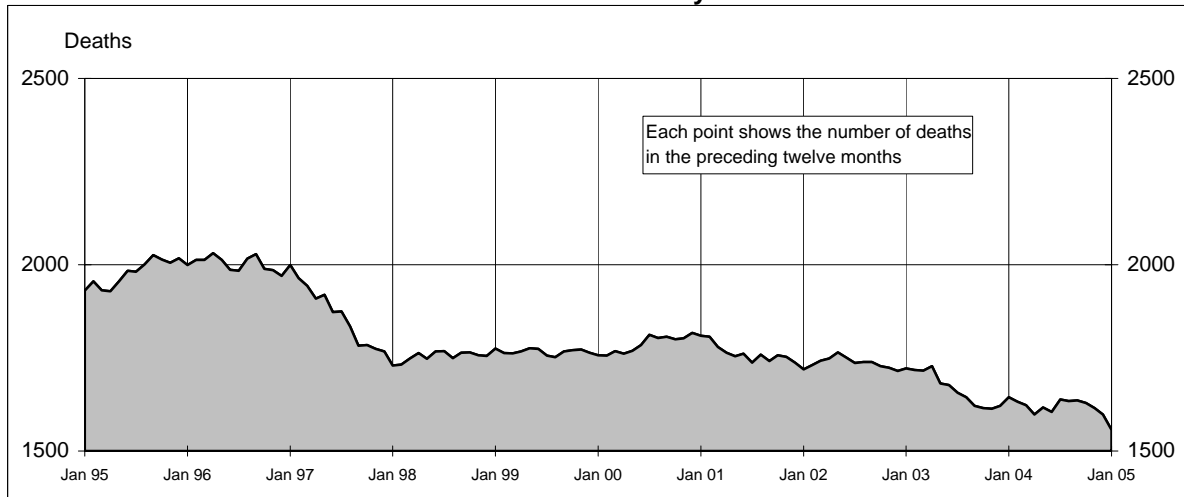
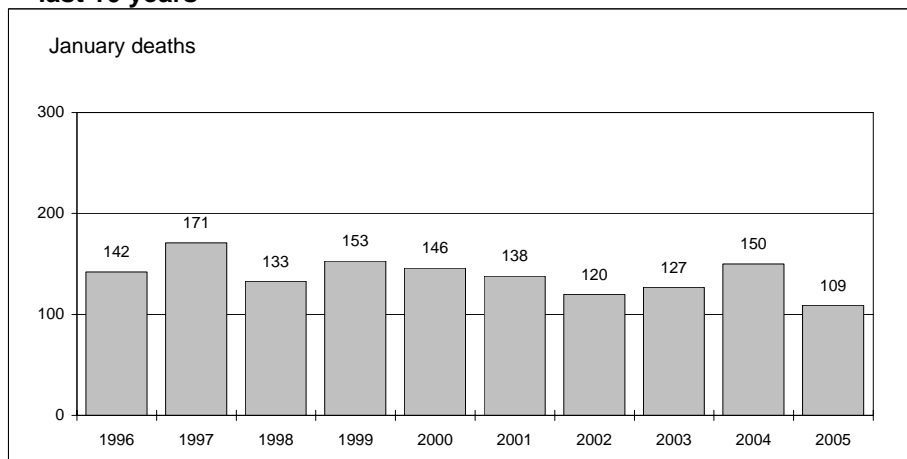




#### Australian road deaths for 12 months to date - last 10 years



#### Australian road deaths for January - last 10 years



#### Inquiries

For further information about data in this bulletin, contact:

The Editor  
Transport Safety Statistics Unit  
Australian Transport Safety Bureau  
PO Box 967,  
Civic Square, ACT 2608

Email: [stats@atsb.gov.au](mailto:stats@atsb.gov.au)  
Internet: [www.atsb.gov.au](http://www.atsb.gov.au)

#### Data Sources

The data presented here are obtained from the following sources:

Roads and Traffic Authority, NSW  
Vicroads

Queensland Transport  
South Australian Police Department  
Western Australian Police Service  
Department of Infrastructure,  
Energy and Resources, Tasmania  
Northern Territory Police,  
Fire & Emergency Services  
Department of Urban Services, ACT

#### Note

Road death statistics for recent months are preliminary and subject to revision. They include any deaths occurring within 30 days of a crash stemming from injuries received in the crash.

© Australian Government

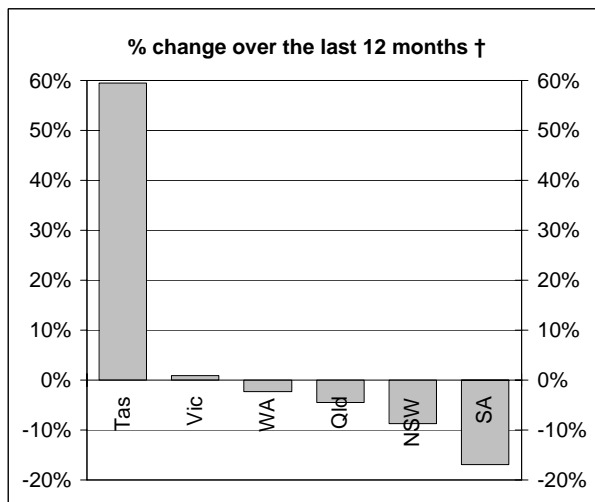
#### This month's key figures

The total number of road deaths in January 2005 was 109  
- this is a 27.3% decrease from the January 2004 figure.

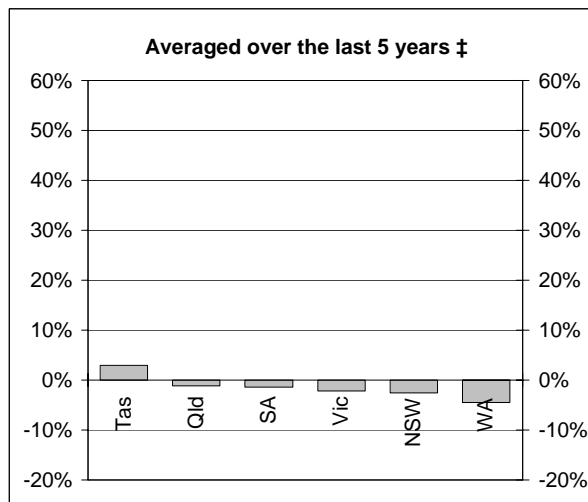
The number of road deaths in 2005 to the end of January is 109  
- this is a 27.3% decrease from the same 1 month period in 2004.

# NUMBER OF ROAD CRASH DEATHS

## Percentage change in road deaths in each State



† Percentage change between the 12-month periods of Feb 2003 - Jan 2004 and Feb 2004 - Jan 2005



‡ Average annual percentage change over each of the 12-month periods from Feb 1999 - Jan 2000 to Feb 2004 - Jan 2005

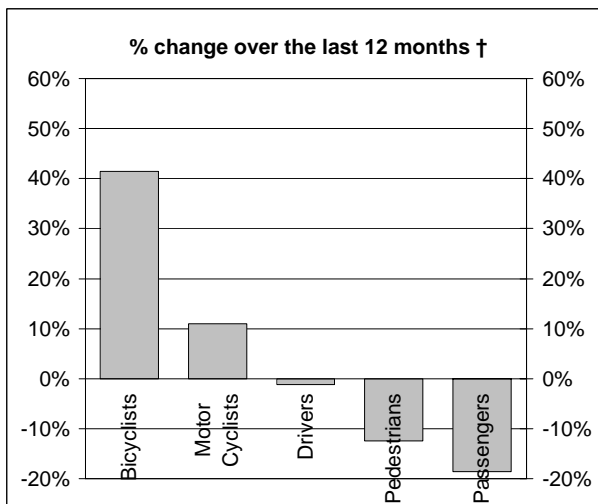
## Road deaths by State/Territory for month, year to date, and twelve months - period ended January 2005 and period ended January 2004

	NSW	Vic	Qld	SA	WA	Tas	NT	ACT	Australia
<b>Current month</b>									
Jan 2005	35	33	16	6	13	4	1	1	109
Jan 2004	55	32	26	13	17	3	2	2	150
% change	-36.4	3.1	-38.5	-53.8	-23.5	33.3	-50.0	-50.0	-27.3
<b>Year to date</b>									
Jan 2005 - Jan 2005	35	33	16	6	13	4	1	1	109
Jan 2004 - Jan 2004	55	32	26	13	17	3	2	2	150
% change	-36.4	3.1	-38.5	-53.8	-23.5	33.3	-50.0	-50.0	-27.3
<b>12-months to date</b>									
Feb 2004 - Jan 2005	504	344	301	132	174	59	34	9	1557
Feb 2003 - Jan 2004	552	341	315	159	178	37	49	13	1644
Difference	-48	3	-14	-27	-4	22	-15	-4	-87
% change	-8.7	0.9	-4.4	-17.0	-2.2	59.5	-30.6	-30.8	-5.3
<b>Ave annual % change (a)</b>									
Jan 2000 to Jan 2005	-2.6	-2.1	-1.2	-1.4	-4.5	3.0	-7.4	-12.9	-2.4

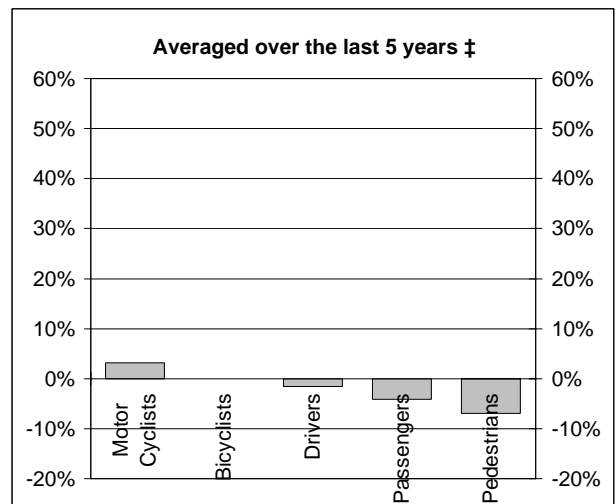
(a) This represents the average annual exponential change between the annual count of 5 years ago and the current annual count

# DEATHS IN EACH ROAD USER GROUP

## Percentage change in deaths in each road user group



† Percentage change between the 12-month periods of Feb 2003 - Jan 2004 and Feb 2004 - Jan 2005



‡ Average annual percentage change over each of the 12-month periods from Feb 1999 - Jan 2000 to Feb 2004 - Jan 2005

## Road deaths by road user group and gender for twelve months ended January 2005 and twelve months ended January 2004

	Drivers	Passengers	Pedestrians	Motor cyclists (a)	Bicyclists	All road users (b)
<b>Males</b>						
Feb 2004 - Jan 2005	589	170	136	187	36	1121
Feb 2003 - Jan 2004	577	223	160	167	25	1158
% change	2.1	-23.8	-15.0	12.0	44.0	-3.2
<b>Females</b>						
Feb 2004 - Jan 2005	167	172	73	16	5	435
Feb 2003 - Jan 2004	188	196	80	16	4	485
% change	-11.2	-12.2	-8.8	0.0	25.0	-10.3
<b>Persons (c)</b>						
Feb 2004 - Jan 2005	756	342	210	203	41	1557
Feb 2003 - Jan 2004	765	420	240	183	29	1644
% change	-1.2	-18.6	-12.5	10.9	41.4	-5.3
<b>Ave annual % change (d)</b>						
Jan 2000 to Jan 2005	-1.5	-4.2	-6.9	3.1	0.0	-2.4

(a) Includes pillion passengers

(b) Includes road users not separately specified

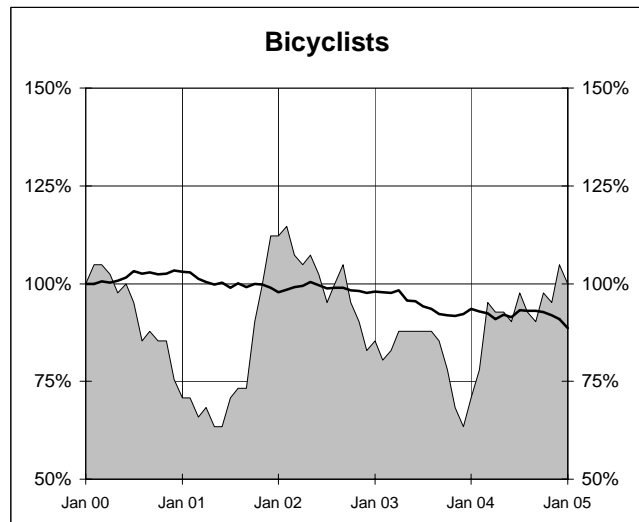
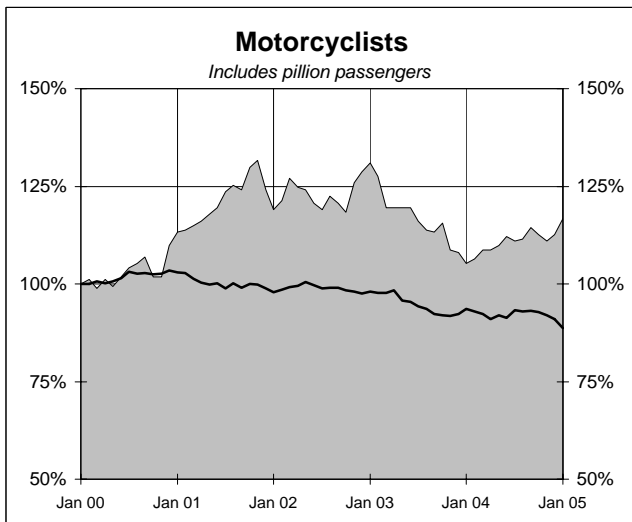
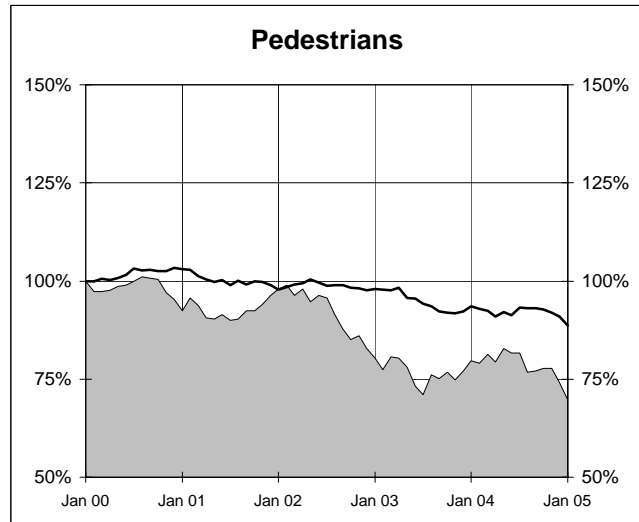
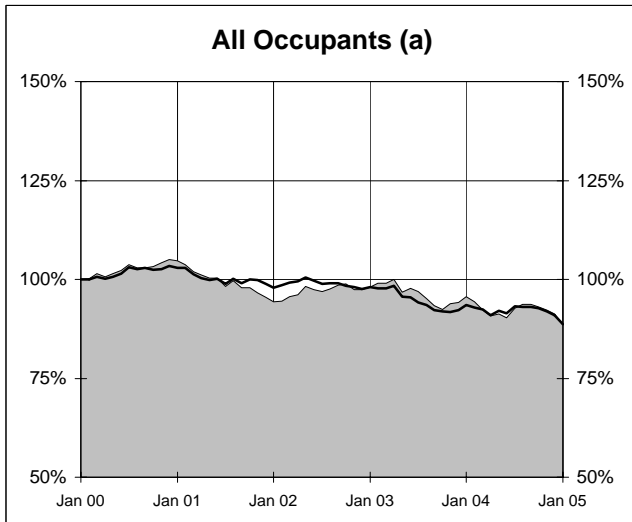
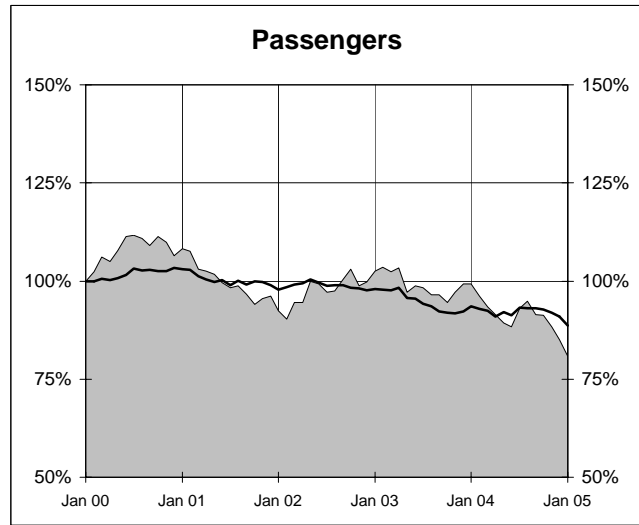
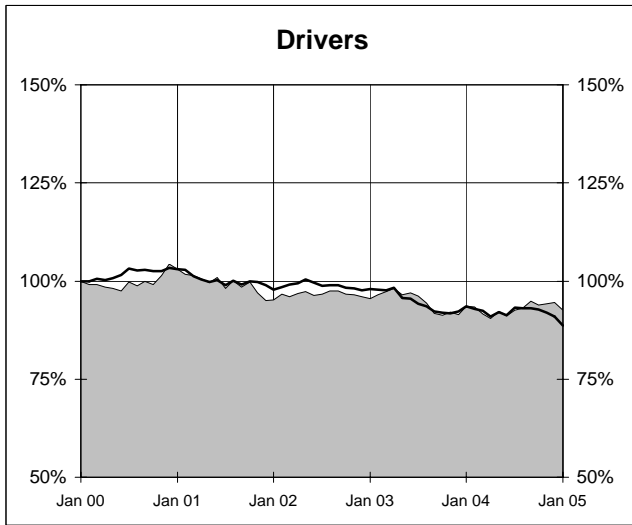
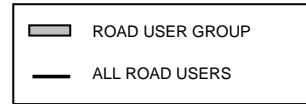
(c) Includes road users with unstated gender

(d) This represents the average annual exponential change between the annual count of 5 years ago and the current annual count

# DEATHS IN EACH ROAD USER GROUP - TRENDS

## Annual deaths in each road user group - last 5 years

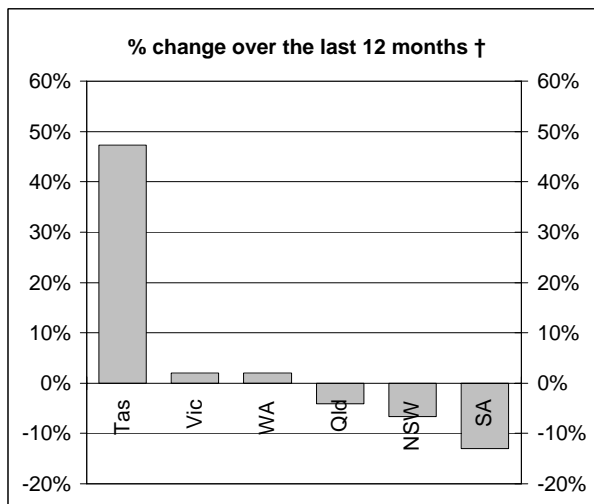
The number shown at each month represents the number of deaths in the preceding 12 months expressed as a percentage of the number of deaths in the 12 months to January 2000.



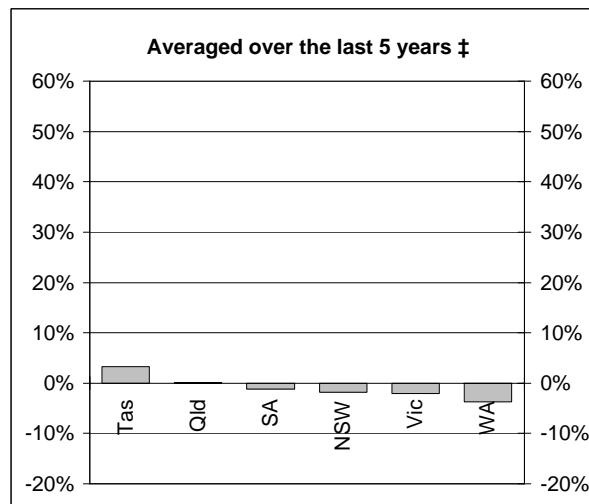
(a) Includes drivers and passengers

# NUMBER OF FATAL ROAD CRASHES

## Percentage change in fatal crashes in each State



† Percentage change between the 12-month periods of Feb 2003 - Jan 2004 and Feb 2004 - Jan 2005



‡ Average annual percentage change over each of the 12-month periods from Feb 1999 - Jan 2000 to Feb 2004 - Jan 2005

## Fatal crashes by State/Territory for month, year to date and twelve months - period ended January 2005 and period ended January 2004

	NSW	Vic	Qld	SA	WA	Tas	NT	ACT	Australia
<b>Current month</b>									
Jan 2005	33	29	15	6	11	4	1	1	100
Jan 2004	46	30	25	13	16	3	2	2	137
% change	-28.3	-3.3	-40.0	-53.8	-31.3	33.3	-50.0	-50.0	-27.0
<b>Year to date</b>									
Jan 2005 - Jan 2005	33	29	15	6	11	4	1	1	100
Jan 2004 - Jan 2004	46	30	25	13	16	3	2	2	137
% change	-28.3	-3.3	-40.0	-53.8	-31.3	33.3	-50.0	-50.0	-27.0
<b>12 months to date</b>									
Feb 2004 - Jan 2005	459	311	278	121	157	53	33	9	1421
Feb 2003 - Jan 2004	492	305	290	139	154	36	42	12	1470
% change	-6.7	2.0	-4.1	-12.9	1.9	47.2	-21.4	-25.0	-3.3
<b>Ave annual % change (a)</b>									
Jan 2000 to Jan 2005	-1.9	-2.1	0.1	-1.1	-3.7	3.3	-6.0	-10.9	-1.7

(a) This represents the average annual exponential change between the annual count of 5 years ago and the current annual count

# FATAL CRASHES INVOLVING TRUCKS AND BUSES

Fatal crashes and deaths involving articulated trucks and buses -  
twelve months ended January 2005 and twelve months ended January 2004

	NSW	Vic	Qld	SA	WA	Tas	NT	ACT	Australia
--	-----	-----	-----	----	----	-----	----	-----	-----------

## FATAL CRASHES INVOLVING ARTICULATED TRUCKS

### Number of crashes

Feb 2004 - Jan 2005	63	31	14	9	14	3	1	0	135
Feb 2003 - Jan 2004	48	33	29	10	14	2	2	1	139
									(-2.9%)

### Number of deaths

Feb 2004 - Jan 2005	70	32	15	11	15	3	1	0	147
Feb 2003 - Jan 2004	61	42	33	10	18	2	2	1	169
									(-13.0%)

Note: Data on heavy rigid trucks not currently available

## FATAL CRASHES INVOLVING BUSES

### Number of crashes

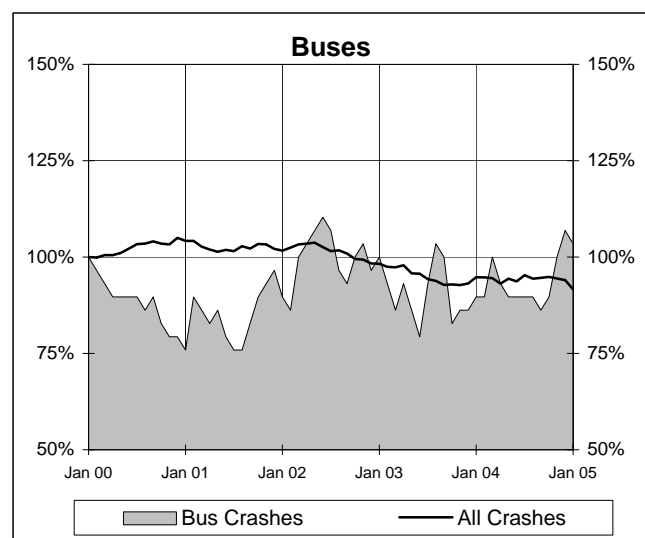
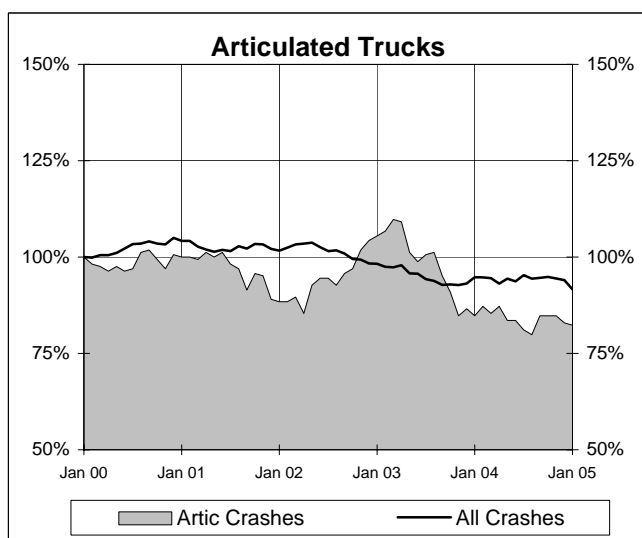
Feb 2004 - Jan 2005	15	5	6	4	0	0	0	0	30
Feb 2003 - Jan 2004	13	3	4	1	2	1	1	1	26
									(+15.4%)

### Number of deaths

Feb 2004 - Jan 2005	15	5	6	4	0	0	0	0	30
Feb 2003 - Jan 2004	15	3	4	2	2	1	1	1	29
									(+3.4%)

## Annual count of fatal crashes involving articulated trucks and buses - last 5 years

The number shown at each month represents the number of fatal crashes in the preceding 12 months expressed as a percentage of the number of fatal crashes in the 12 months to January 2000.



## CHARACTERISTICS OF FATAL CRASHES

Proportion (per cent) of fatal crashes by speed limit, crash type, time of day, and time of week - two years ended January 2005 and two years ended January 2000

	<i>Speed limit (km/h) (a)</i>			<i>Time of Day</i>	
	<i>Up to 60</i>	<i>65-95</i>	<i>100+</i>	<i>Day time</i>	<i>Night-time (b)</i>
<i>Feb 2003 - Jan 2005</i>	32.9	22.0	45.1	55.3	44.7
<i>Feb 1998 - Jan 2000</i>	33.4	21.4	45.2	55.1	44.9

	<i>Crash Type</i>			<i>Time of week</i>	
	<i>Pedestrian crash</i>	<i>Other single veh. crash</i>	<i>Other multiple veh. crash</i>	<i>Week day</i>	<i>Week- end (c)</i>
<i>Feb 2003 - Jan 2005</i>	15.3	44.3	40.4	58.8	41.2
<i>Feb 1998 - Jan 2000</i>	19.8	38.8	41.3	58.9	41.1

(a) Excludes ACT

(b) 6:00 pm to 5:59 am

(c) 6:00 pm Friday to 5:59 am Monday