

AUSTRALIA'S INTERNATIONAL ROAD SAFETY PERFORMANCE 1996

This monograph compares Australia's road safety performance to its OECD counterparts. The comparisons are drawn taking into account the level of motorisation and population of the countries reported. The results highlight the substantial gains made in road safety both in Australia and many other countries from 1975 to 1996. Full details of these comparisons are reported in *Benchmarking Road Safety – The 1996 Report*, published by the Federal Office of Road Safety.

Fatalities Per 10,000 Registered Vehicles

The number of deaths for every 10,000 registered vehicles is a method of comparing road fatalities taking into account the level of motorisation.

Road fatalities relative to vehicle ownership have declined significantly in Australia since 1975.

In 1975, there were 5.8 deaths per 10,000 registered vehicles in Australia, in 1996 this had decreased to 1.7.

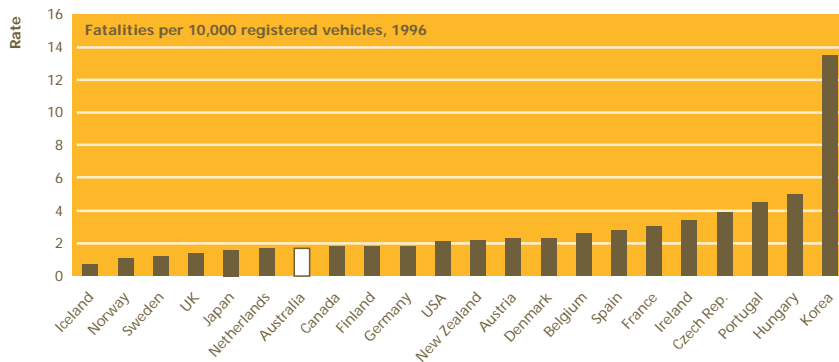
The median rate for the OECD nations reported has also declined. In 1975, the OECD median was 6.6, by 1996 it was 2.2.

For the years reported, Australia's rate of death per 10,000 registered vehicles is equal or below that reported for the OECD median.

In 1996, Australia recorded 1.7 deaths per 10,000 registered vehicles. Australia ranked seventh of the 22 OECD nations for which this information was available.

Iceland had the lowest rate recording 0.7 deaths per 10,000 registered vehicles.

Korea, with 13.5 deaths per 10,000 registered vehicles, had the highest rate of the OECD nations.



Fatalities Per 100,000 Population

The number of deaths for every 100,000 of population is a measure of the public health risk associated with road use.

Fatalities per 10,000 registered vehicles - OECD nations

| | 1975 | 1980 | 1985 | 1986 | 1987 | 1988 | 1989 | 1990 | 1991 | 1992 | 1993 | 1994 | 1995 | 1996 |
|----------------|------|------|------|------|------|------|------|------|------|------|------|------|------|------|
| Australia | 5.8 | 4.3 | 3.2 | 3.2 | 3.0 | 3.0 | 2.9 | 2.3 | 2.1 | 1.9 | 1.9 | 1.8 | 1.8 | 1.7 |
| Austria | 11.6 | 7.2 | 4.8 | 4.6 | 4.4 | 4.7 | 4.4 | 4.2 | 4.1 | 3.6 | 3.1 | 3.1 | 2.7 | 2.3 |
| Belgium | 7.5 | 6.4 | 4.5 | 4.8 | 4.6 | 4.6 | 4.5 | 4.3 | 4.0 | 3.5 | 3.4 | 3.4 | 2.8 | 2.6 |
| Canada | 5.3 | 4.0 | 3.0 | 2.7 | 2.7 | 2.6 | 2.5 | 2.3 | 2.2 | 2.0 | 2.0 | 1.8 | 1.9 | 1.8 |
| Czech Republic | - | - | - | - | - | - | - | - | - | - | - | - | 4.1 | 3.9 |
| Denmark | 5.0 | 3.7 | 4.1 | 3.7 | 3.5 | 3.5 | 3.2 | 3.1 | 2.9 | 2.8 | 2.7 | 2.6 | 2.7 | 2.3 |
| Finland | 7.2 | 4.0 | 3.2 | 3.4 | 3.1 | 3.3 | 3.5 | 2.9 | 2.8 | 2.6 | 2.1 | 2.2 | 2.0 | 1.8 |
| France | 8.1 | 6.3 | 4.6 | 4.8 | 4.3 | 4.5 | 4.4 | 4.2 | 3.9 | 3.6 | 3.4 | 3.2 | 3.1 | 3.0 |
| Germany | 7.2 | 4.9 | 2.9 | 2.9 | 2.5 | 2.6 | 2.5 | 2.6 | 2.6 | 2.4 | 2.2 | 2.1 | 2.0 | 1.8 |
| Greece | 16.5 | 10.4 | 9.6 | 7.7 | 7.6 | 7.2 | 7.6 | 7.2 | 7.1 | 7.0 | 6.6 | 6.5 | 6.5 | - |
| Hungary | 12.6 | 9.0 | 9.0 | 7.9 | 7.2 | 7.4 | 8.8 | 11.2 | 8.8 | 8.5 | 6.7 | 6.1 | 6.0 | 5.0 |
| Iceland | - | 2.8 | 2.1 | 2.1 | 1.9 | 2.2 | 2.0 | 1.7 | 2.0 | 1.5 | 1.3 | - | 1.8 | 0.7 |
| Ireland | 8.6 | 6.2 | 4.5 | 4.2 | 4.8 | 4.7 | 4.5 | 4.5 | 4.0 | 3.7 | 3.7 | 3.4 | 3.5 | 3.4 |
| Italy | 6.0 | 4.7 | 3.1 | 2.9 | 2.6 | 2.6 | 2.3 | 2.3 | 2.5 | 2.4 | 2.0 | - | 2.0 | - |
| Japan | 4.3 | 2.7 | 2.4 | 2.3 | 2.2 | 2.4 | 2.4 | 2.4 | 2.2 | 2.2 | 1.9 | 1.8 | 1.8 | 1.6 |
| Korea | - | - | - | - | - | - | - | - | - | - | - | - | - | 13.5 |
| Luxemburg | 11.7 | 6.4 | 4.0 | 4.1 | 3.4 | 4.0 | 3.2 | 3.3 | 3.6 | 3.1 | 3.1 | 2.4 | 2.2 | - |
| Netherlands | 6.1 | 4.0 | 2.6 | 2.8 | 2.6 | 2.3 | 2.4 | 2.2 | 2.0 | 2.0 | 1.9 | 1.9 | 2.0 | 1.7 |
| New Zealand | 4.3 | 3.5 | 3.9 | - | 3.9 | 3.6 | 3.6 | 3.3 | 2.9 | 2.9 | 2.7 | 2.5 | 2.5 | 2.2 |
| Norway | - | 2.4 | 2.2 | 2.3 | 1.9 | 1.7 | 1.7 | 1.5 | 1.5 | 1.5 | 1.3 | 1.3 | 1.3 | 1.1 |
| Portugal | 26.1 | 15.2 | 9.3 | 9.2 | 9.9 | 10.0 | 8.6 | 7.7 | 7.6 | 6.7 | 5.4 | - | 4.8 | 4.5 |
| Spain | 9.0 | 6.4 | 5.4 | 5.7 | 5.8 | 6.0 | 6.3 | 5.8 | 5.4 | 4.5 | 3.6 | 3.1 | 3.1 | 2.8 |
| Sweden | 3.8 | 2.5 | 2.2 | 2.2 | 2.0 | 2.0 | 2.2 | 1.8 | 1.7 | 1.7 | 1.5 | 1.4 | 1.3 | 1.2 |
| Switzerland | 5.9 | 4.5 | 2.7 | 3.0 | 2.7 | 2.7 | 2.5 | 2.5 | 2.2 | 2.1 | 1.8 | 1.7 | 1.7 | - |
| UK | 3.9 | 3.4 | 2.6 | 2.7 | 2.5 | 2.4 | 2.4 | 2.2 | 1.9 | 1.8 | 1.6 | - | 1.5 | 1.4 |
| USA | 3.2 | 3.2 | 2.7 | 2.5 | 2.5 | 2.5 | 2.5 | 2.4 | 2.2 | 2.1 | 2.1 | 2.1 | 2.1 | 2.1 |
| OECD median | 6.6 | 4.4 | 3.2 | 3.2 | 3.0 | 3.2 | 3.0 | 2.8 | 2.7 | 2.5 | 2.2 | 2.3 | 2.0 | 2.2 |

The public health risk associated with road use has declined significantly in Australia since 1975.

In 1975 there were 26.6 deaths per 100,000 population in Australia, in 1996 this had decreased to 10.8.

The median rate for the OECD nations reported has also declined. In 1975, the OECD median was 18.8, by 1996 it was 10.8.

In 1996, Australia recorded 10.8 road deaths per 100,000 population. Australia ranked 12th of the 23 OECD nations for which this information was available.

Iceland had the lowest rate, recording 3.7 deaths per 100,000 population.

Korea, with 32.3 deaths per 100,000 population, had the highest rate of the OECD nations.

Key points

Compared to other OECD nations, Australia ranked:

- 7th in terms of fatalities per 10,000 registered vehicles; and
- 12th in terms of fatalities per 100,000 population.

Iceland was the safest nation in terms of fatalities per 10,000 registered vehicles, and per 100,000 population.

Data Sources

Figures provided for all OECD nations, with the exception of Australia, were derived from the International Road Traffic and Accident Database (IRTAD).

Sources for Australian figures are provided below.

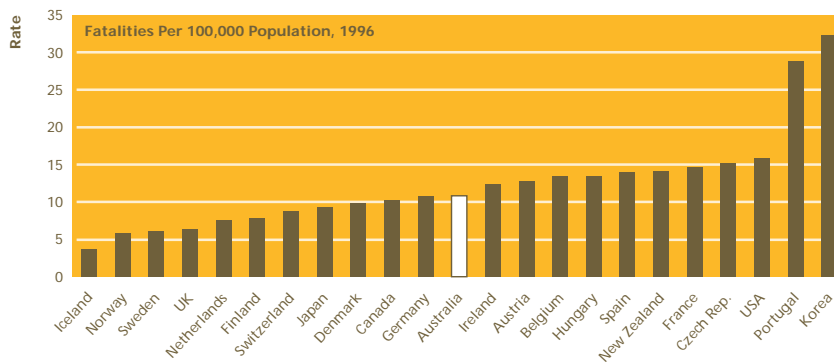
1975, 1980, 1985- 1995

Fatalities per 100,000 population and per 10,000 registered vehicles were taken from the FORS publication *Road Fatalities Australia 1996 Statistical Summary*.

1996

Fatalities per 100,000 population were calculated using the latest population and fatality figures.

Fatalities per 10,000 registered vehicles were calculated using the latest registered vehicle and fatality figures.



Fatalities per 100,000 population - OECD nations

| | 1975 | 1980 | 1985 | 1986 | 1987 | 1988 | 1989 | 1990 | 1991 | 1992 | 1993 | 1994 | 1995 | 1996 |
|--------------------|-------------|-------------|-------------|-------------|-------------|-------------|-------------|-------------|-------------|-------------|-------------|-------------|-------------|-------------|
| Australia | 26.6 | 22.3 | 18.6 | 17.9 | 17.0 | 17.4 | 16.7 | 13.7 | 12.2 | 11.3 | 11.1 | 10.8 | 11.2 | 10.8 |
| Austria | 33.4 | 26.5 | 20.1 | 19.7 | 19.3 | 21.3 | 20.6 | 20.3 | 20.0 | 17.8 | 16.1 | 16.7 | 15.0 | 12.8 |
| Belgium | 24.0 | 24.3 | 18.3 | 19.8 | 19.5 | 19.9 | 20.1 | 19.9 | 18.8 | 16.7 | 16.5 | 16.8 | 14.3 | 13.4 |
| Canada | 26.7 | 22.7 | 17.3 | 16.1 | 16.7 | 16.0 | 16.2 | 14.9 | 13.7 | 12.3 | 12.6 | 11.1 | 11.3 | 10.3 |
| Czech Republic | - | - | - | - | - | - | - | - | - | - | - | - | 15.4 | 15.2 |
| Denmark | 16.4 | 13.5 | 15.1 | 14.1 | 13.6 | 13.9 | 13.1 | 12.4 | 11.8 | 11.2 | 10.8 | 10.5 | 11.2 | 9.8 |
| Finland | 19.4 | 11.6 | 11.1 | 12.5 | 11.8 | 13.2 | 14.8 | 13.1 | 12.7 | 12.0 | 9.6 | 9.5 | 8.6 | 7.9 |
| France | 27.3 | 25.5 | 20.7 | 21.6 | 19.4 | 20.6 | 20.5 | 19.9 | 18.5 | 17.3 | 16.6 | 15.6 | 15.3 | 14.7 |
| Germany | 22.0 | 19.3 | 13.0 | 13.7 | 12.2 | 12.7 | 12.5 | 14.0 | 14.2 | 13.2 | 12.3 | 12.1 | 11.6 | 10.7 |
| Greece | 13.5 | 14.6 | 19.7 | 16.8 | 17.3 | 17.4 | 19.5 | 19.8 | 20.2 | 20.4 | 20.3 | 21.1 | 22.5 | - |
| Hungary | 16.0 | 15.2 | 16.5 | 15.3 | 14.8 | 16.1 | 20.4 | 23.4 | 20.5 | 20.3 | 16.3 | 15.2 | 15.6 | 13.4 |
| Iceland | - | 11.0 | 10.0 | 9.9 | 9.8 | 11.7 | 11.1 | 9.5 | 10.6 | 8.1 | 6.4 | - | 9.0 | 3.7 |
| Ireland | 18.5 | 16.6 | 11.6 | 10.9 | 13.0 | 13.1 | 13.1 | 13.7 | 12.6 | 11.7 | 12.1 | 11.4 | 12.1 | 12.4 |
| Italy | 18.6 | 16.4 | 13.5 | 13.4 | 12.8 | 13.1 | 12.0 | 12.4 | 14.0 | 14.2 | 12.6 | - | 12.3 | - |
| Japan | 12.5 | 9.7 | 10.0 | 10.0 | 9.9 | 11.0 | 11.7 | 11.8 | 11.6 | 12.0 | 10.6 | 10.2 | 10.1 | 9.3 |
| Korea | - | - | - | - | - | - | - | - | - | - | - | - | - | 32.3 |
| Luxemburg | - | 27.0 | 21.6 | 21.5 | 18.4 | 22.6 | 17.9 | 18.5 | 20.8 | 18.7 | 19.2 | 18.5 | 16.75 | - |
| Netherlands | 17.1 | 14.2 | 10.0 | 10.5 | 10.2 | 9.3 | 9.8 | 9.2 | 8.5 | 8.5 | 8.2 | 8.5 | 8.6 | 7.6 |
| New Zealand | 20.3 | 18.9 | 22.7 | 23.2 | 24.1 | 21.7 | 22.7 | 21.5 | 19.0 | 18.8 | 17.2 | 16.5 | 16.2 | 14.1 |
| Norway | 13.5 | 8.9 | 9.7 | 10.9 | 9.5 | 9.0 | 9.0 | 7.8 | 7.6 | 7.6 | 6.5 | 6.5 | 7.0 | 5.8 |
| Portugal | 39.5 | 31.5 | 25.2 | 26.2 | 30.6 | 33.7 | 31.5 | 32.2 | 34.4 | 32.9 | 28.7 | - | 28.8 | 28.9 |
| Spain | 16.6 | 17.7 | 16.6 | 18.3 | 19.7 | 21.3 | 24.1 | 23.2 | 22.7 | 20.1 | 16.3 | 14.4 | 14.7 | 14.0 |
| Sweden | 14.3 | 10.2 | 9.7 | 10.1 | 9.4 | 9.7 | 10.7 | 9.1 | 8.7 | 8.8 | 7.3 | 6.7 | 6.5 | 6.1 |
| Switzerland | 19.0 | 19.2 | 13.7 | 15.5 | 14.2 | 14.0 | 13.6 | 13.9 | 12.4 | 12.2 | 10.5 | 9.7 | 9.9 | 8.7 |
| UK | 11.9 | 11.1 | 9.4 | 9.9 | 9.4 | 9.2 | 9.7 | 9.4 | 8.2 | 7.6 | 6.8 | 6.5 | 6.4 | 6.4 |
| USA | 20.7 | 22.5 | 18.4 | 19.1 | 19.1 | 19.2 | 18.5 | 17.9 | 16.4 | 15.4 | 15.6 | 15.6 | 15.9 | 15.8 |
| OECD median | 18.8 | 17.1 | 15.1 | 15.5 | 14.8 | 16.0 | 15.2 | 14.0 | 14.0 | 13.2 | 12.6 | 11.4 | 11.6 | 10.8 |