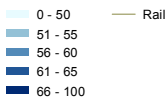
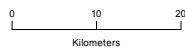


Legend



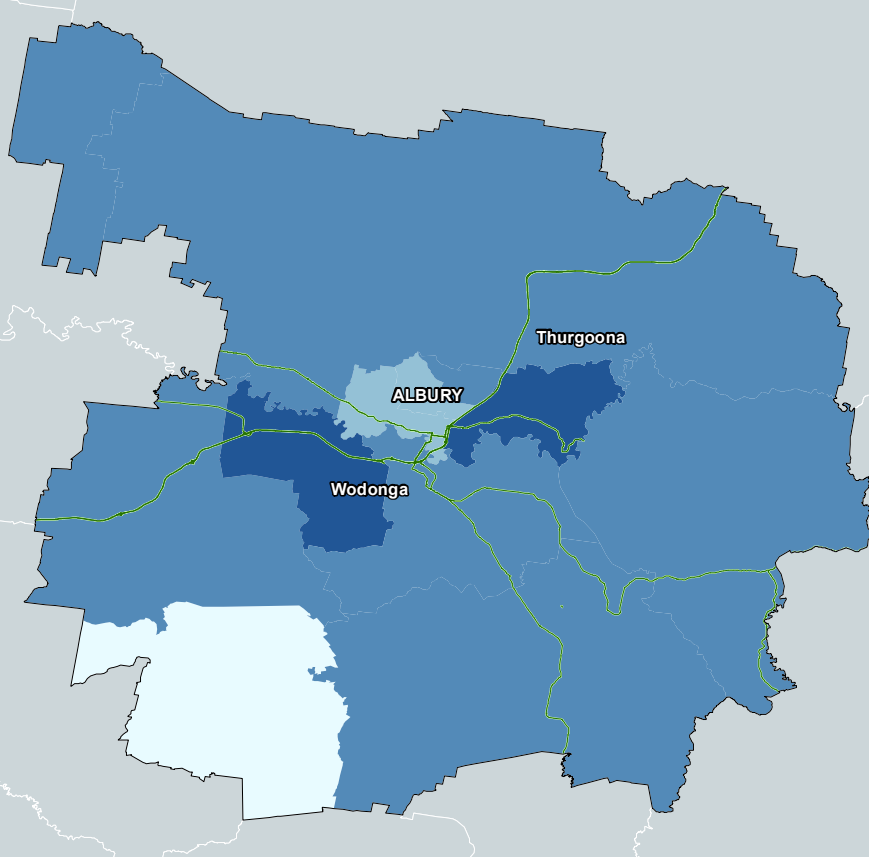
Proportion of employed males aged 15 to 64 working full-time in Adelaide 2011 (SA2)



Australian Government
Department of Infrastructure
and Transport



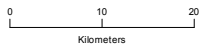
Derived From:
PSMA, ABS 2011 Census, Bureau of Meteorology 2012



Legend

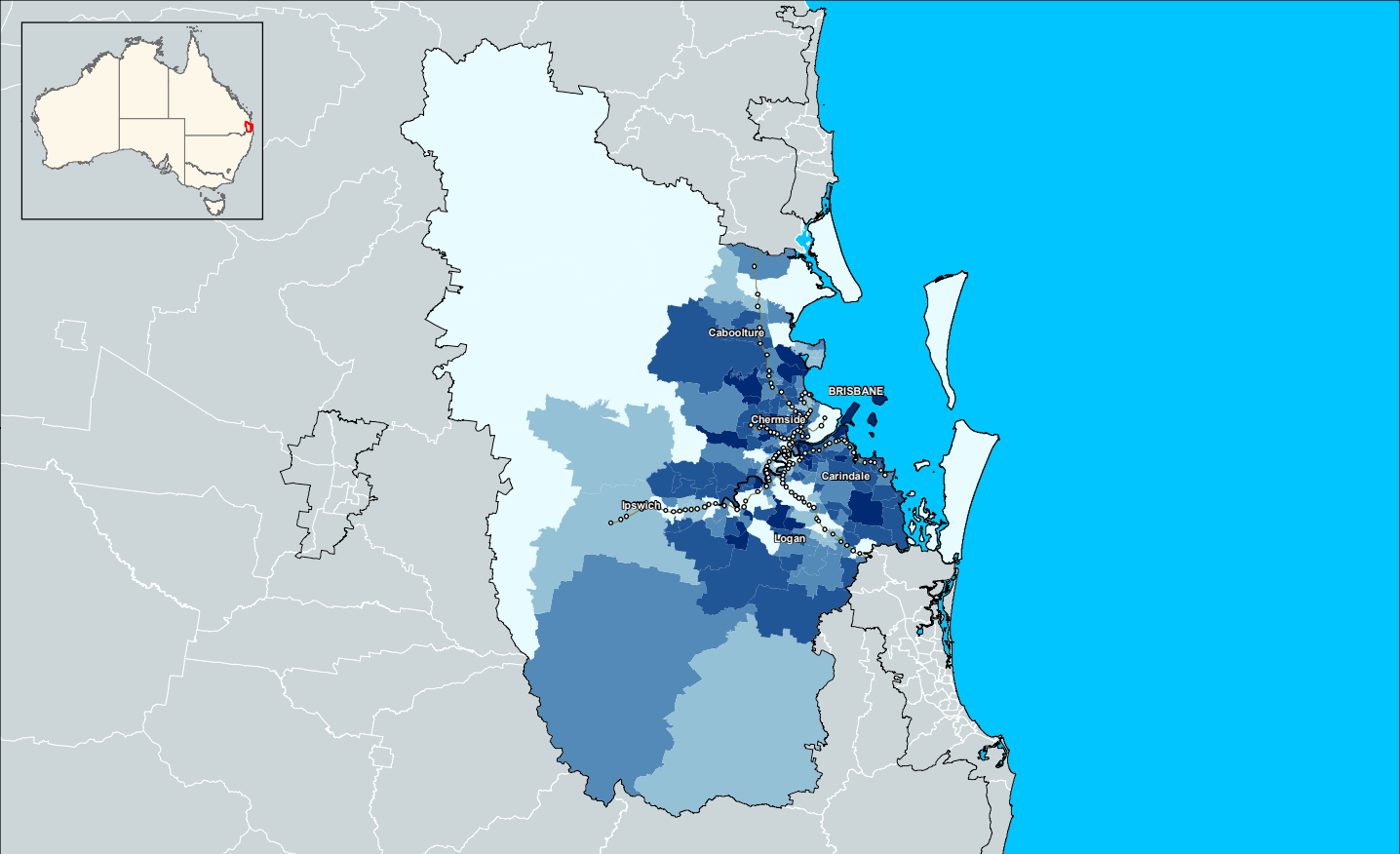
- 0 - 50
- 51 - 55
- 56 - 60
- 61 - 65
- Road

**Proportion of employed males aged 15 to 64 working full-time in Albury - Wodonga
2011 (SA2)**

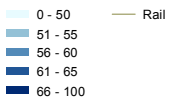


Australian Government
Department of Infrastructure
and Transport





Legend



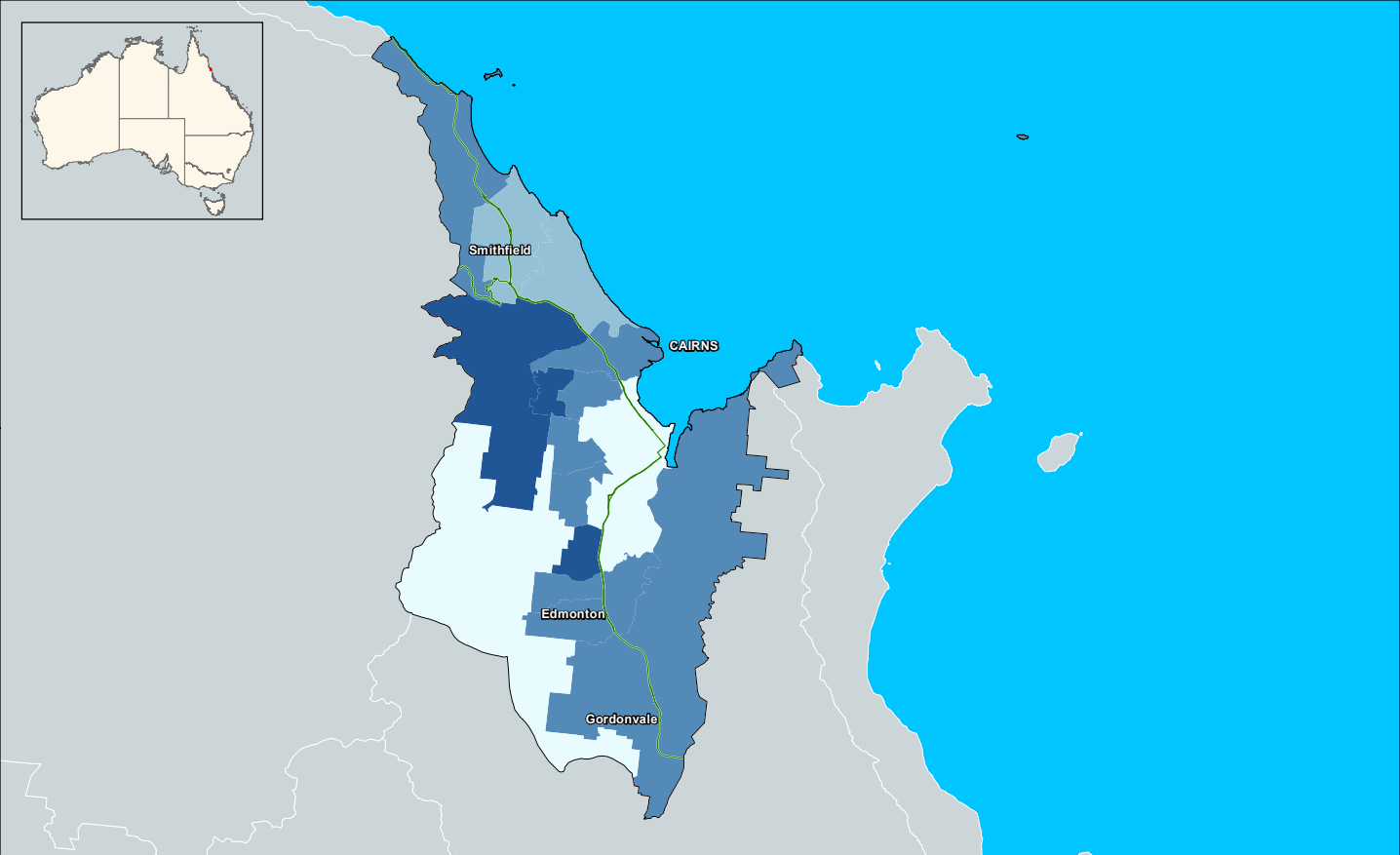
Proportion of employed males aged 15 to 64 working full-time in Brisbane 2011 (SA2)



Australian Government
Department of Infrastructure
and Transport



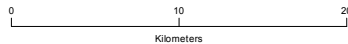
Derived From:
PSMA, ABS 2011 Census, Bureau of Meteorology 2012



Legend

- 0 - 50
- 51 - 55
- 56 - 60
- 61 - 65
- Road

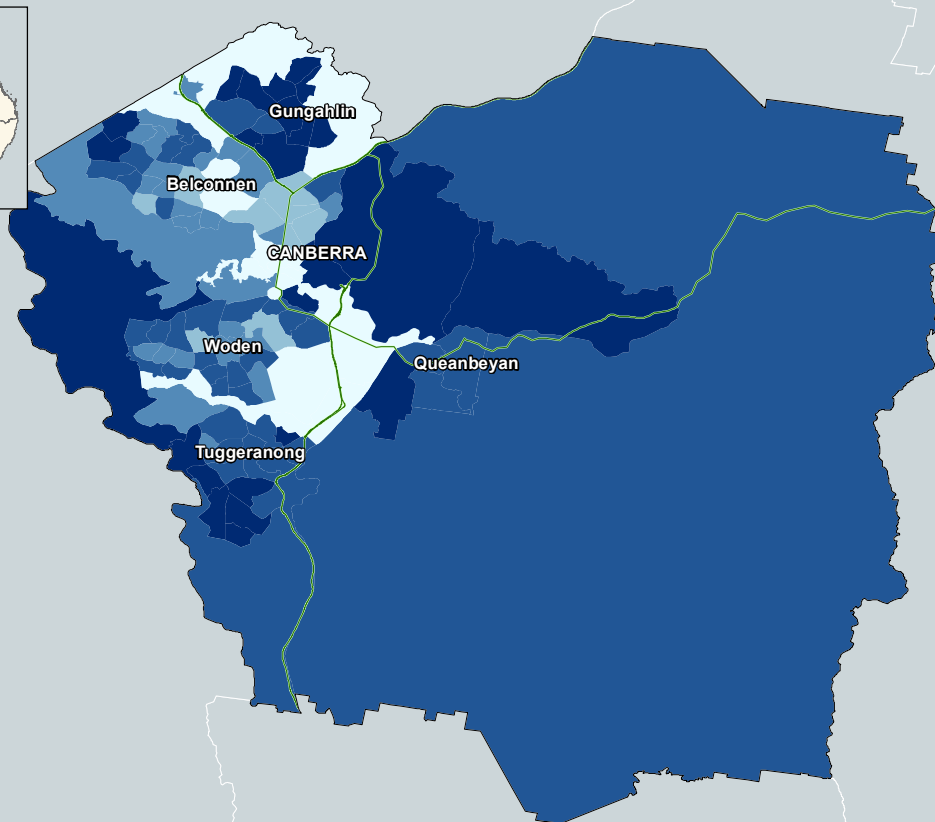
Proportion of employed males aged 15 to 64 working full-time in Cairns 2011 (SA2)



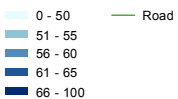
Australian Government
Department of Infrastructure
and Transport



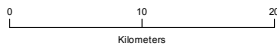
Derived From:
PSMA, ABS 2011 Census, Bureau of Meteorology 2012



Legend



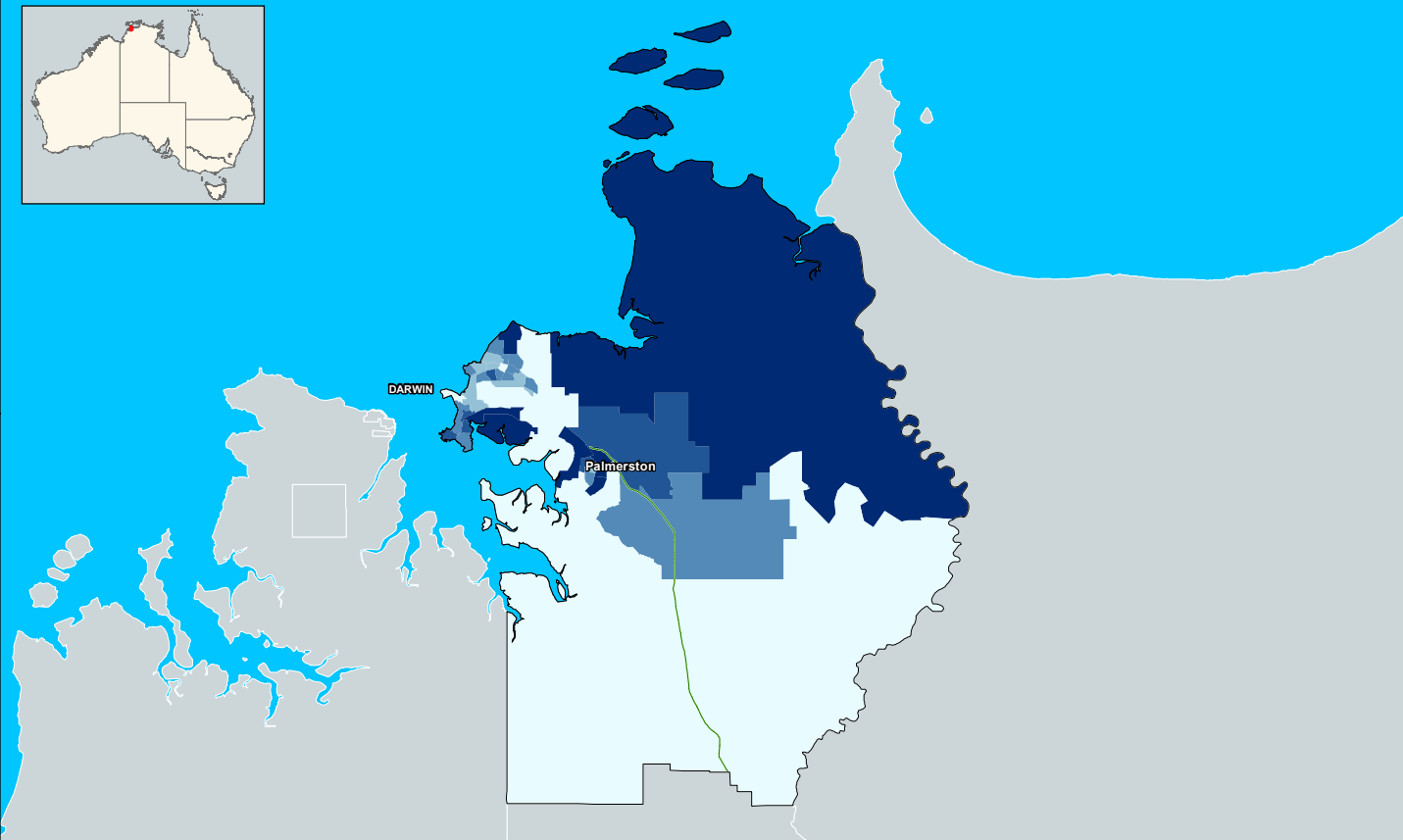
Proportion of employed males aged 15 to 64 working full-time in Canberra - Queanbeyan 2011 (SA2)



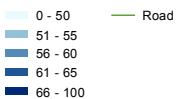
Australian Government
Department of Infrastructure
and Transport



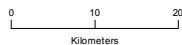
Derived From:
PSMA, ABS 2011 Census, Bureau of Meteorology 2012



Legend



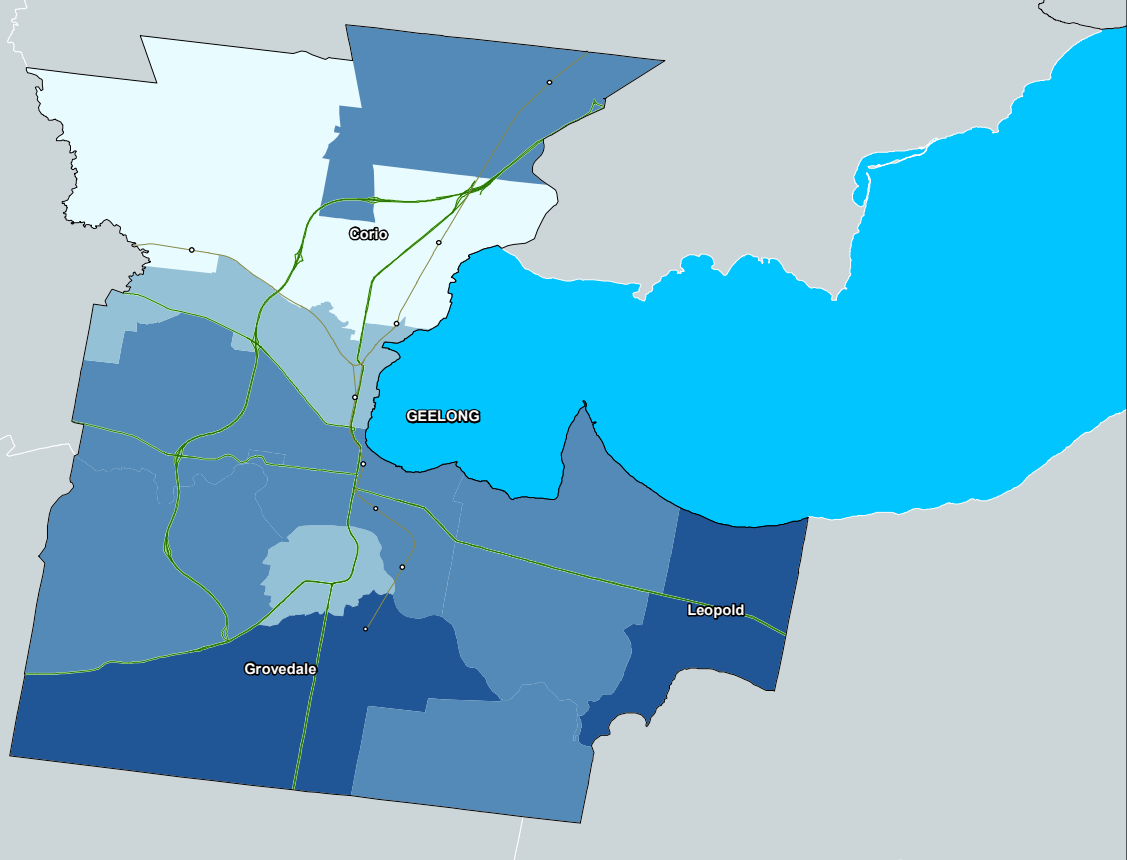
Proportion of employed males aged 15 to 64 working full-time in Darwin 2011 (SA2)



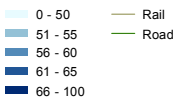
Australian Government
Department of Infrastructure
and Transport



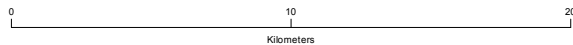
Derived From:
PSMA, ABS 2011 Census, Bureau of Meteorology 2012



Legend



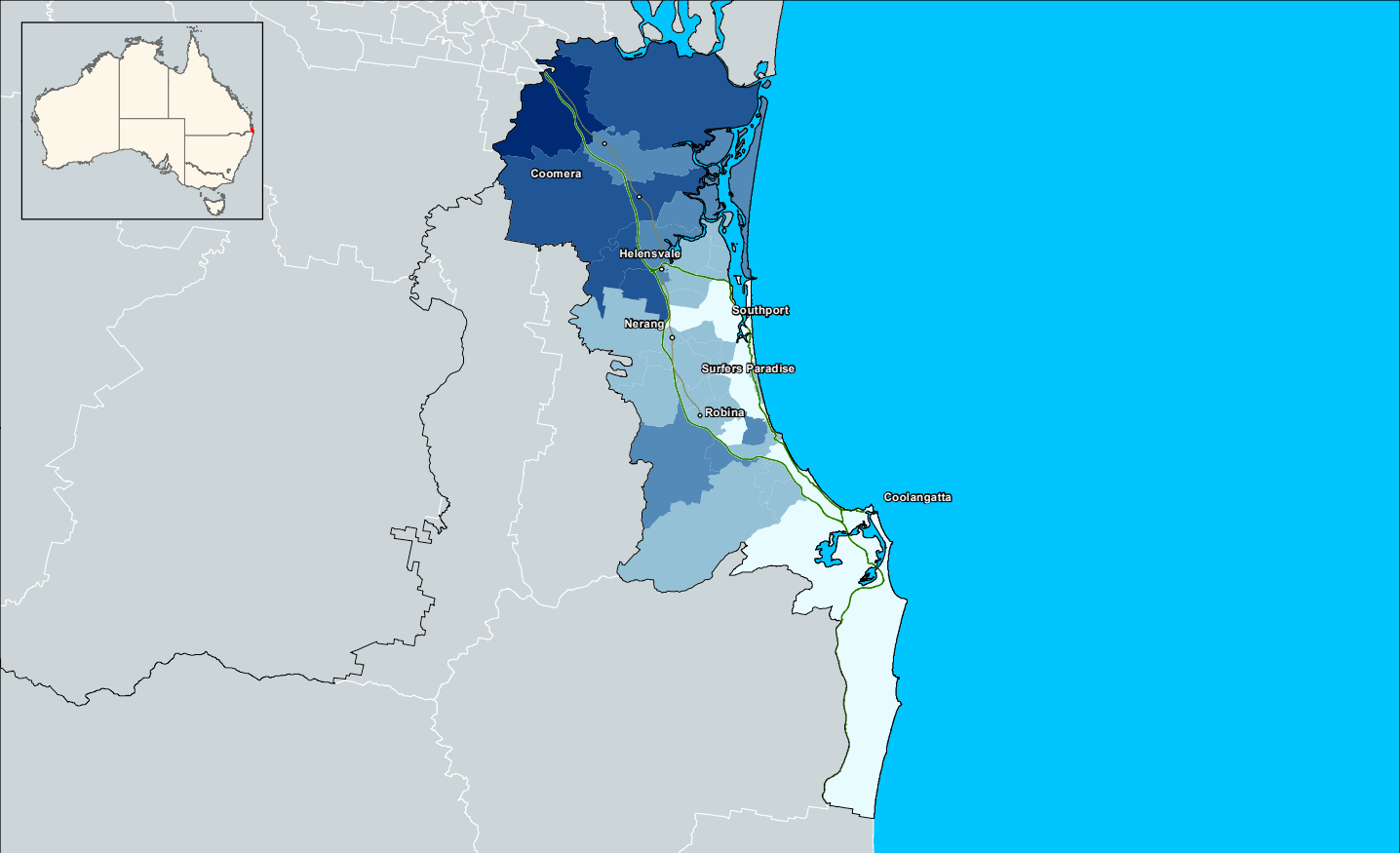
Proportion of employed males aged 15 to 64 working full-time in Geelong 2011 (SA2)



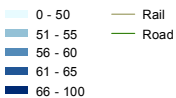
Australian Government
Department of Infrastructure
and Transport



Derived From:
PSMA, ABS 2011 Census, Bureau of Meteorology 2012



Legend

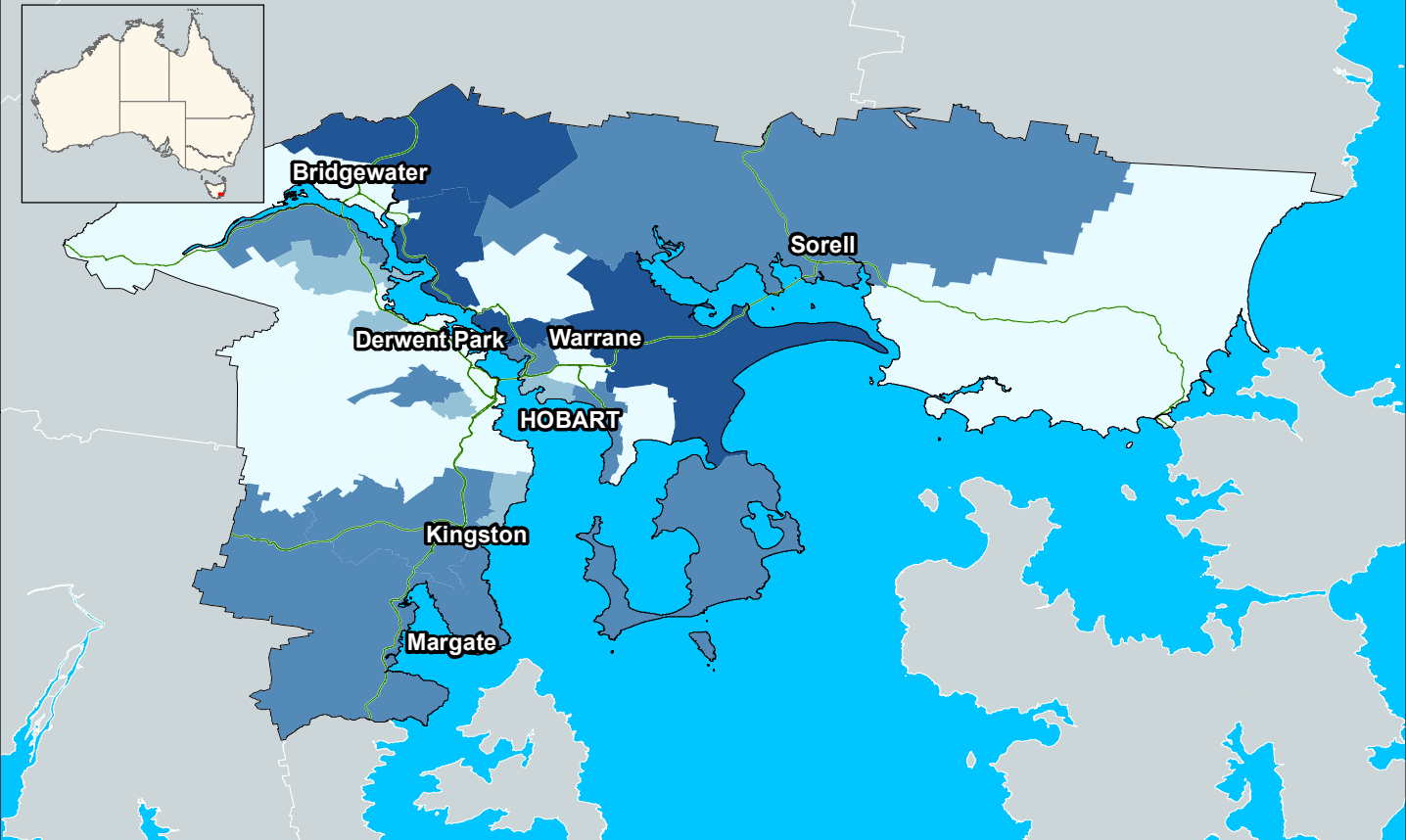


Proportion of employed males aged 15 to 64 working full-time in Gold Coast - Tweed 2011 (SA2)



Australian Government
Department of Infrastructure
and Transport

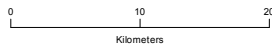




Legend

- 0 - 50
- 51 - 55
- 56 - 60
- 61 - 65
- Road

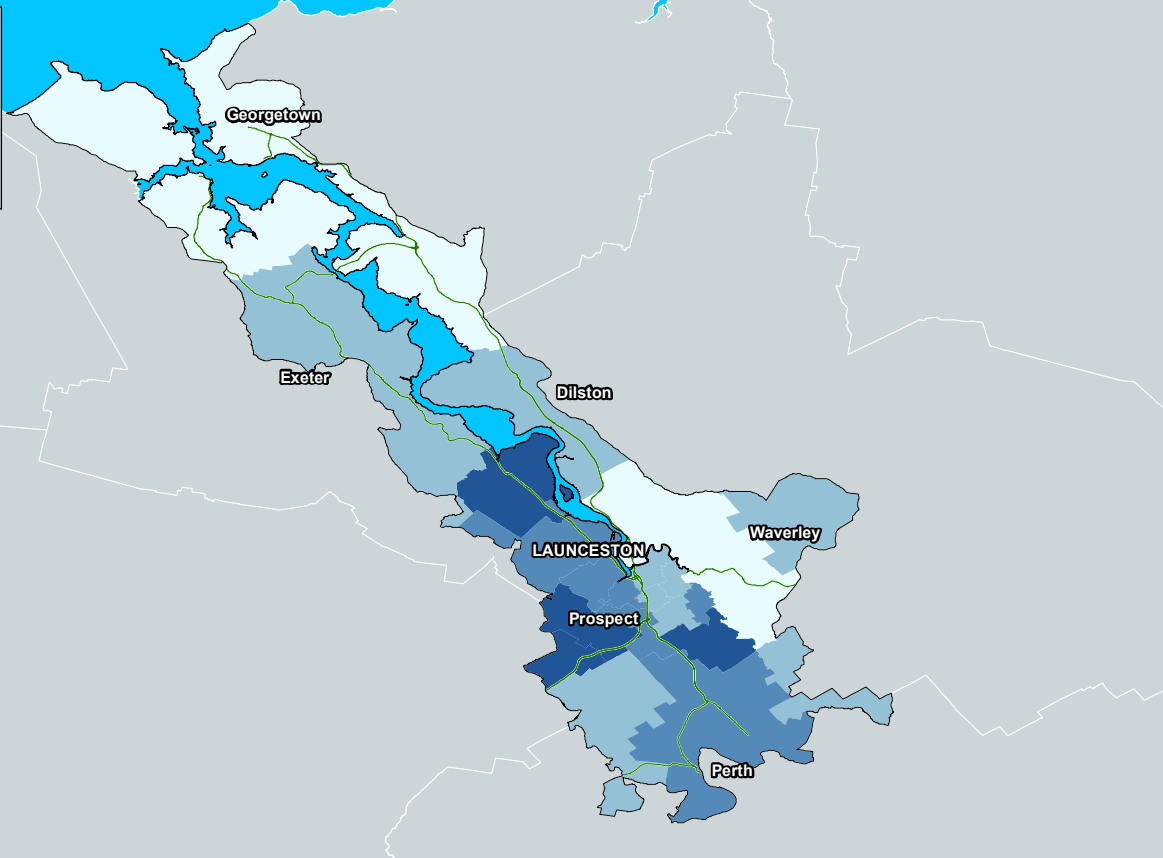
Proportion of employed males aged 15 to 64 working full-time in Hobart 2011 (SA2)



Australian Government
Department of Infrastructure
and Transport



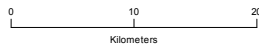
Derived From:
PSMA, ABS 2011 Census, Bureau of Meteorology 2012



Legend

- 0 - 50
- 51 - 55
- 56 - 60
- 61 - 65
- Road

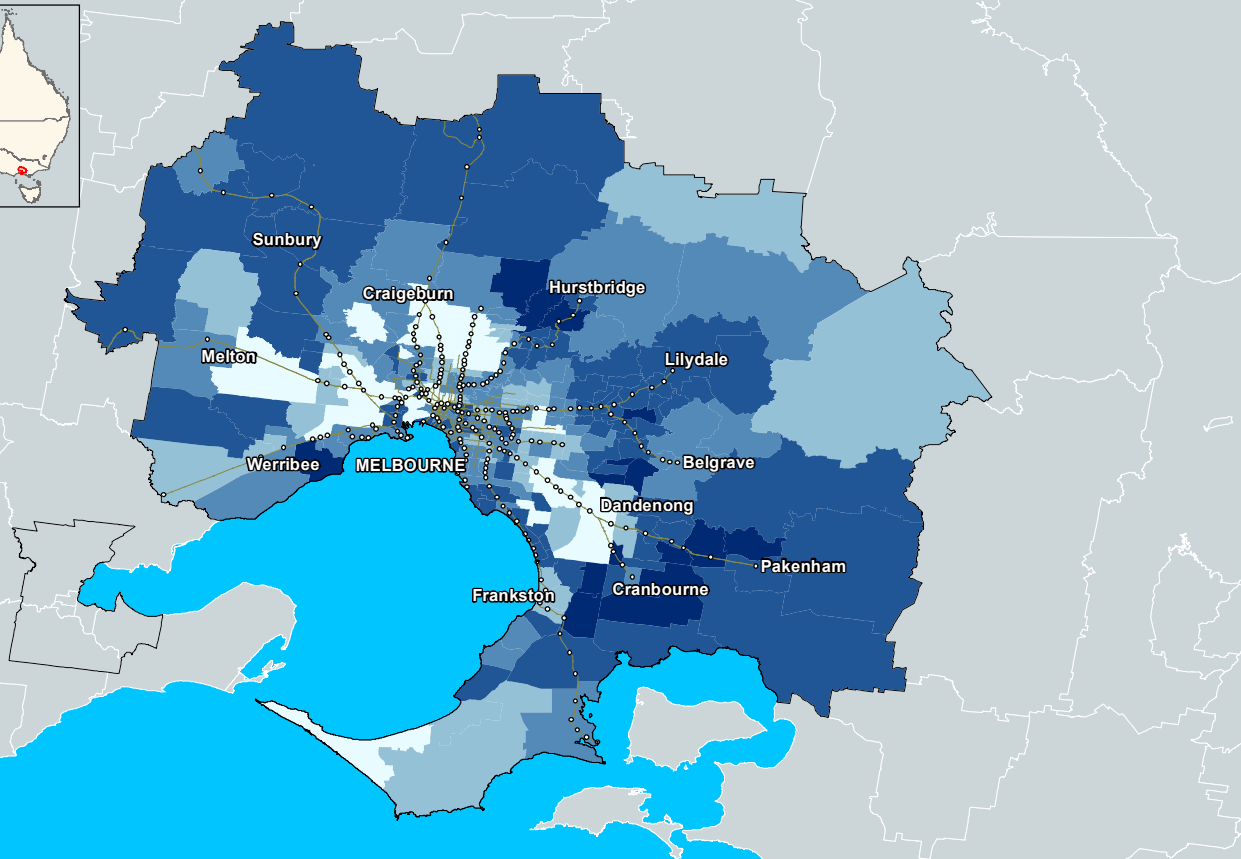
Proportion of employed males aged 15 to 64 working full-time in Launceston 2011 (SA2)



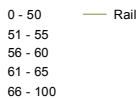
Australian Government
Department of Infrastructure
and Transport



Derived From:
PSMA, ABS 2011 Census, Bureau of Meteorology 2012

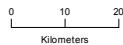


Legend



Rail

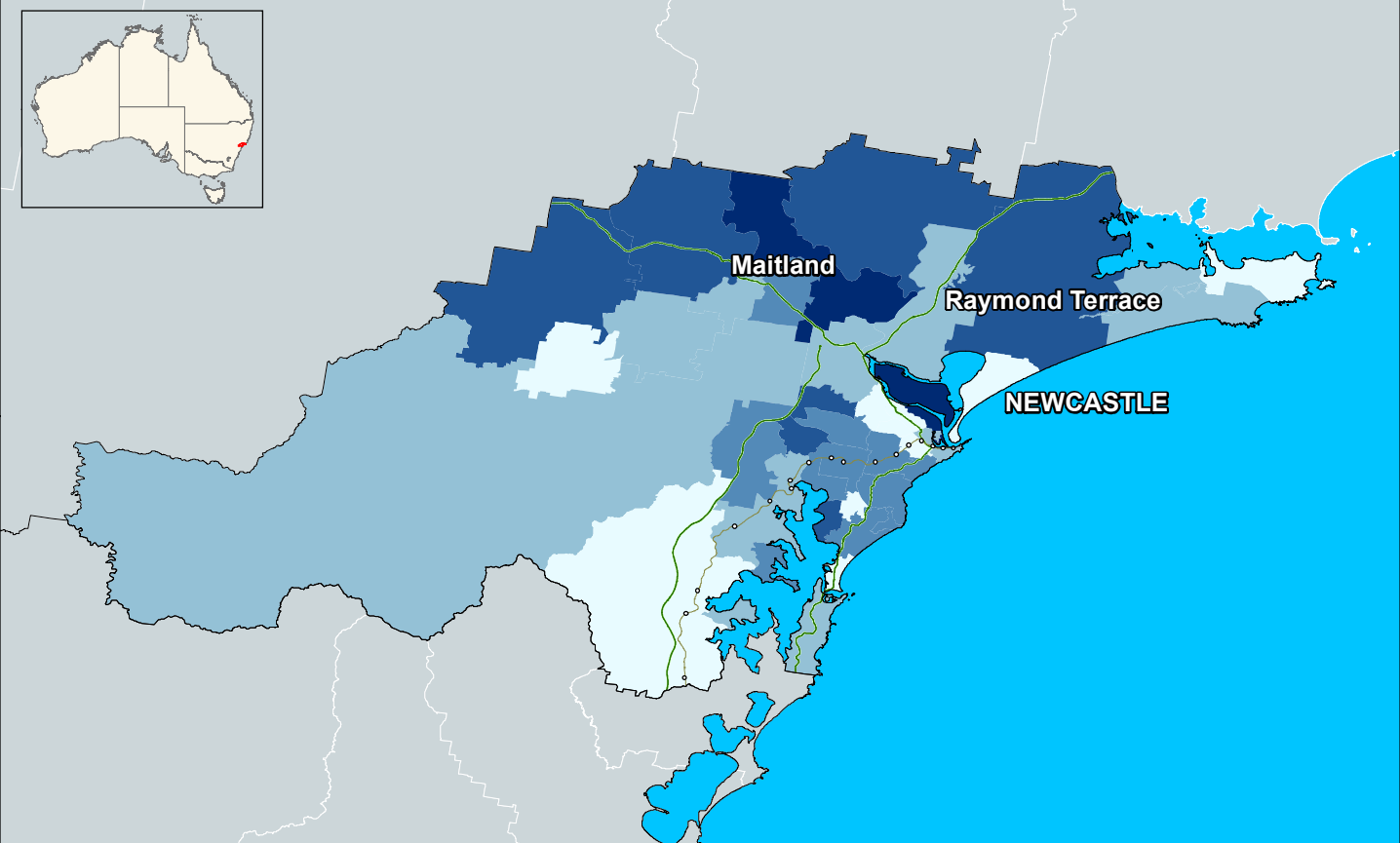
Proportion of employed males aged 15 to 64 working full-time in Melbourne 2011 (SA2)



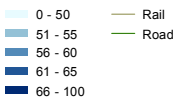
Australian Government
Department of Infrastructure
and Transport



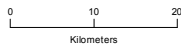
Derived From:
PSMA, ABS 2011 Census, Bureau of Meteorology 2012



Legend



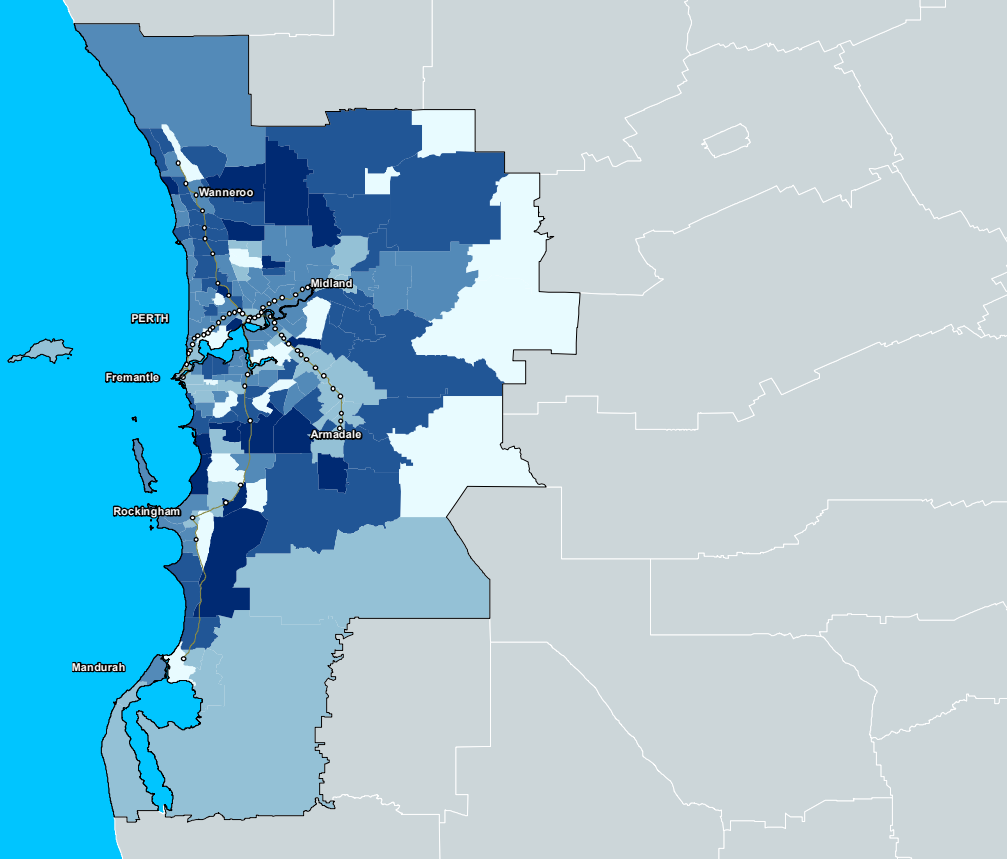
Proportion of employed males aged 15 to 64 working full-time in Newcastle 2011 (SA2)



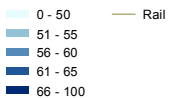
Australian Government
Department of Infrastructure
and Transport



Derived From:
PSMA, ABS 2011 Census, Bureau of Meteorology 2012

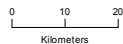


Legend



Rail

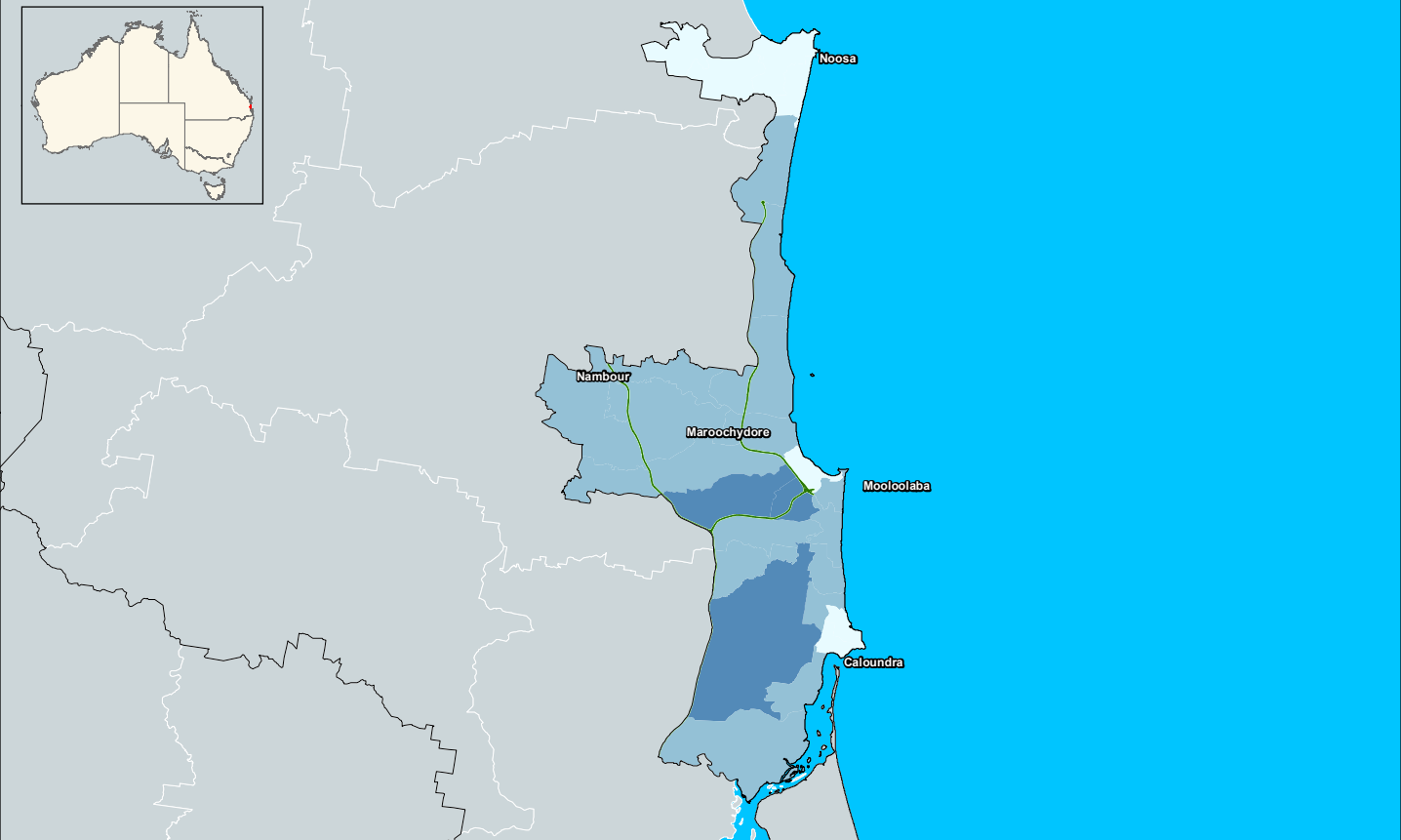
Proportion of employed males aged 15 to 64 working full-time in Perth 2011 (SA2)



Australian Government
Department of Infrastructure
and Transport



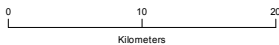
Derived From:
PSMA, ABS 2011 Census, Bureau of Meteorology 2012



Legend

- 0 - 50
- 51 - 55
- 56 - 60
- Road

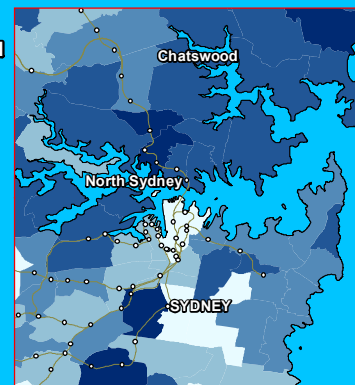
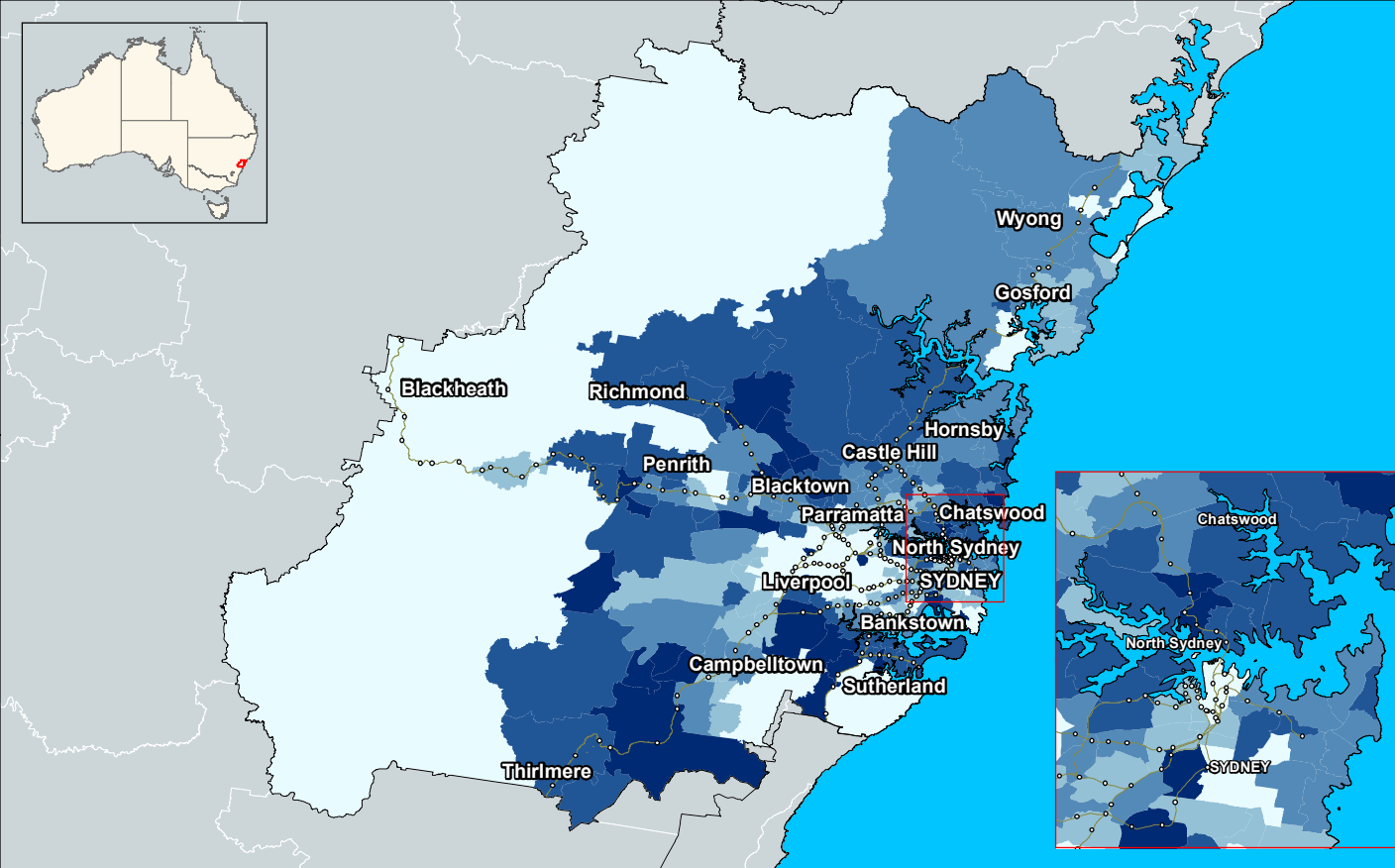
Proportion of employed males aged 15 to 64 working full-time in Sunshine Coast 2011 (SA2)



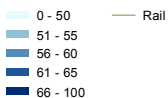
Australian Government
Department of Infrastructure
and Transport



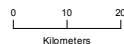
Derived From:
PSMA, ABS 2011 Census, Bureau of Meteorology 2012



Legend



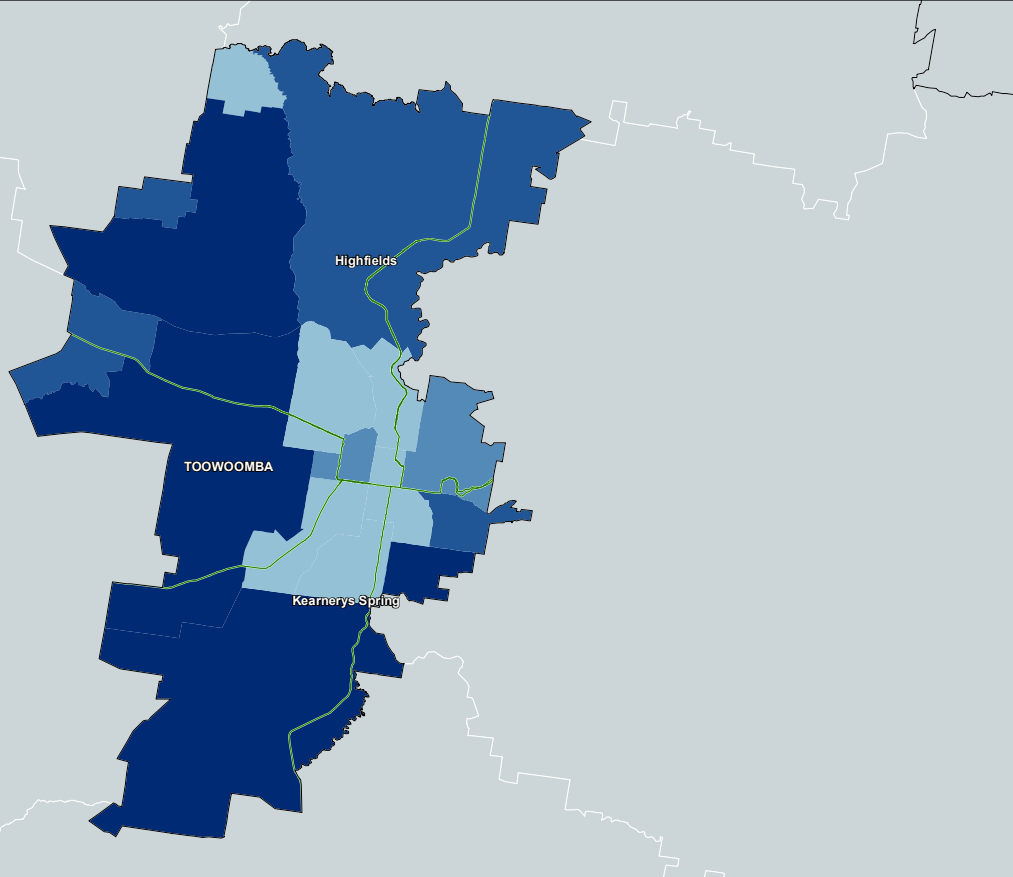
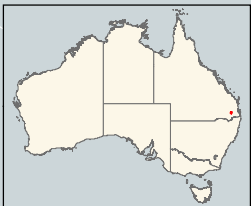
Proportion of employed males aged 15 to 64 working full-time in Sydney 2011 (SA2)



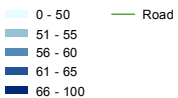
Australian Government
Department of Infrastructure
and Transport



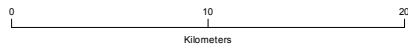
Derived From:
PSMA, ABS 2011 Census, Bureau of Meteorology 2012



Legend



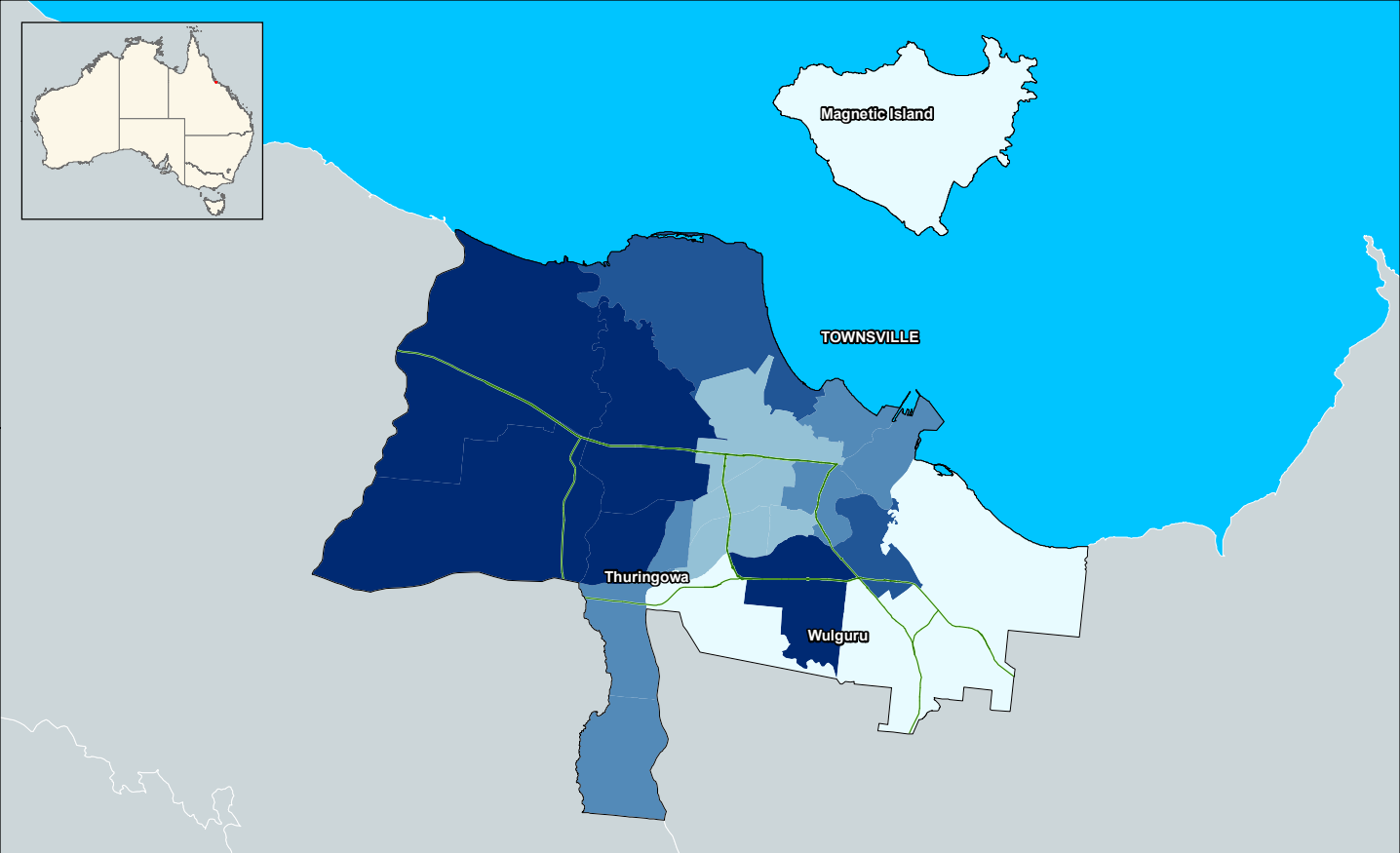
**Proportion of employed males aged 15 to 64 working full-time in Toowoomba
2011 (SA2)**



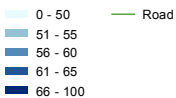
Australian Government
Department of Infrastructure
and Transport



Derived From:
PSMA, ABS 2011 Census, Bureau of Meteorology 2012



Legend



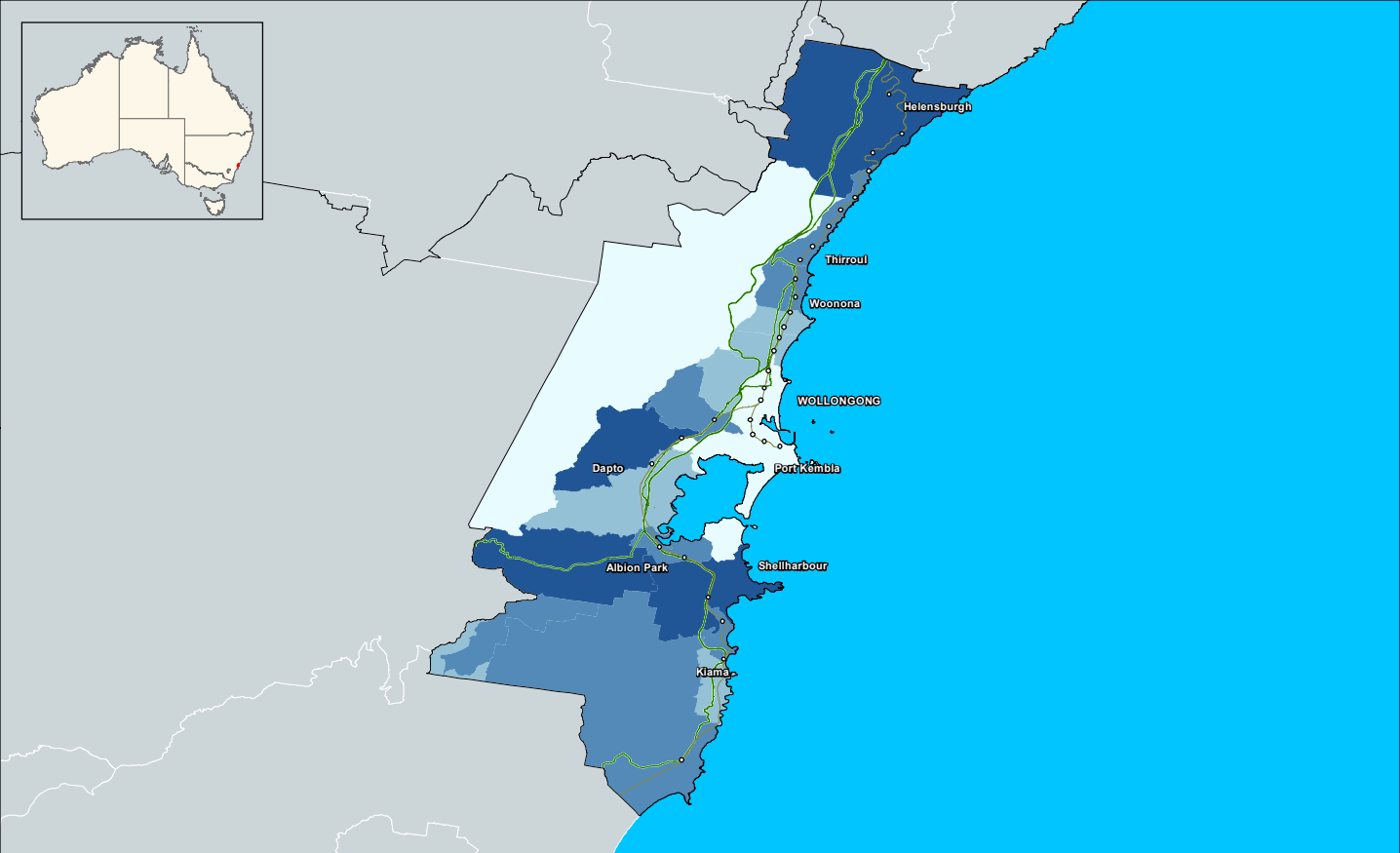
Proportion of employed males aged 15 to 64 working full-time in Townsville 2011 (SA2)



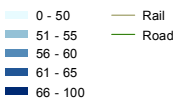
Australian Government
Department of Infrastructure
and Transport



Derived From:
PSMA, ABS 2011 Census, Bureau of Meteorology 2012



Legend



Proportion of employed males aged 15 to 64 working full-time in Wollongong 2011 (SA2)



Australian Government
Department of Infrastructure
and Transport



Derived From:
PSMA, ABS 2011 Census, Bureau of Meteorology 2012