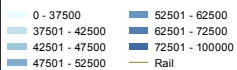
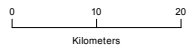


Legend



National average income from all sources in Adelaide 2010 (SA2)



Australian Government
Department of Infrastructure
and Transport



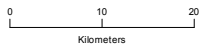
Derived From:
PSMA, ABS 2011 Census, Bureau of Meteorology 2012



Legend

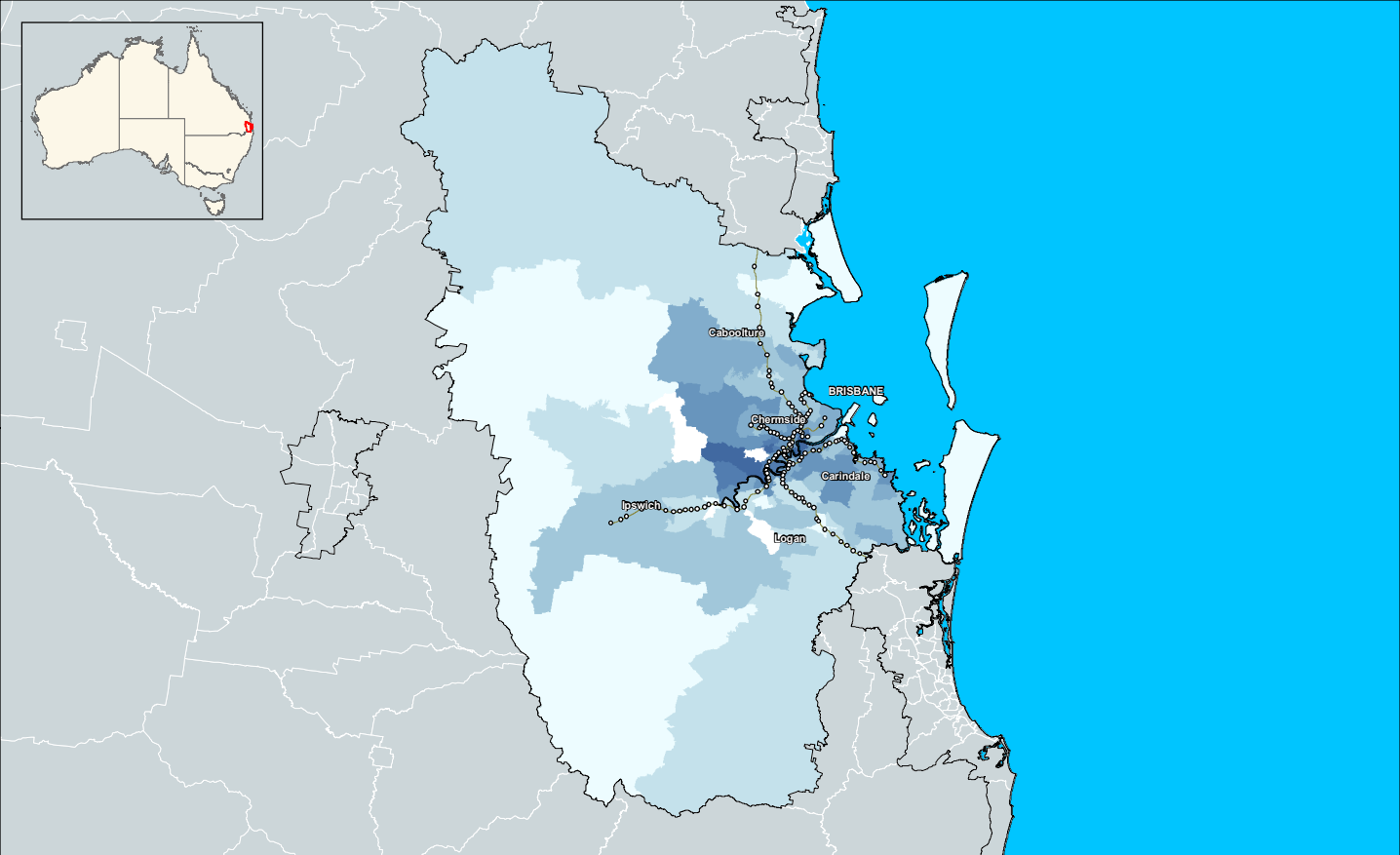
- 0 - 37500
- 37501 - 42500
- 42501 - 47500
- Road

National average income from all sources in Albury - Wodonga 2010 (SA2)

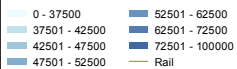


Australian Government
Department of Infrastructure
and Transport





Legend



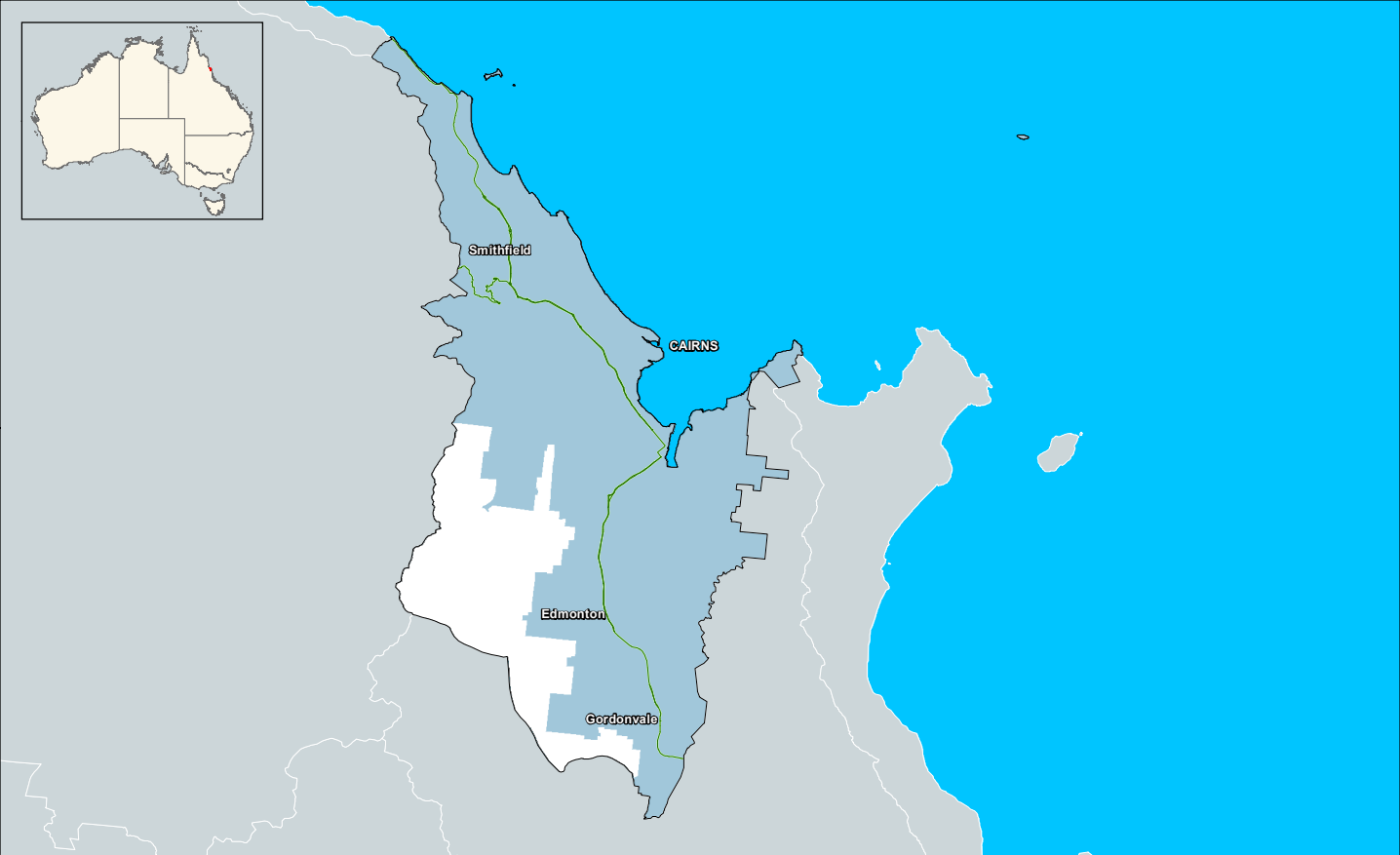
National average income from all sources in Brisbane 2010 (SA2)



Australian Government
Department of Infrastructure
and Transport



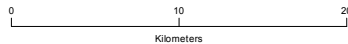
Derived From:
PSMA, ABS 2011 Census, Bureau of Meteorology 2012



Legend

- 0 - 37500
- 37501 - 42500
- 42501 - 47500
- Road

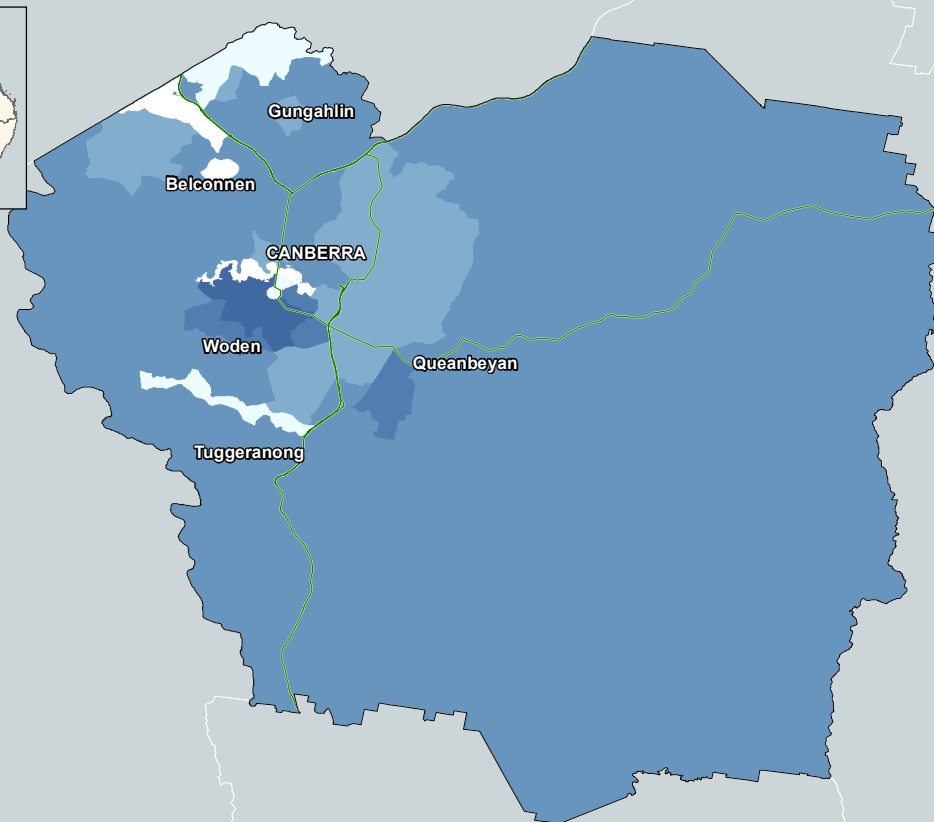
National average income from all sources in Cairns 2010 (SA2)



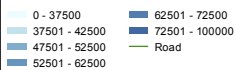
Australian Government
Department of Infrastructure
and Transport



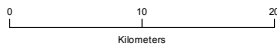
Derived From:
PSMA, ABS 2011 Census, Bureau of Meteorology 2012



Legend



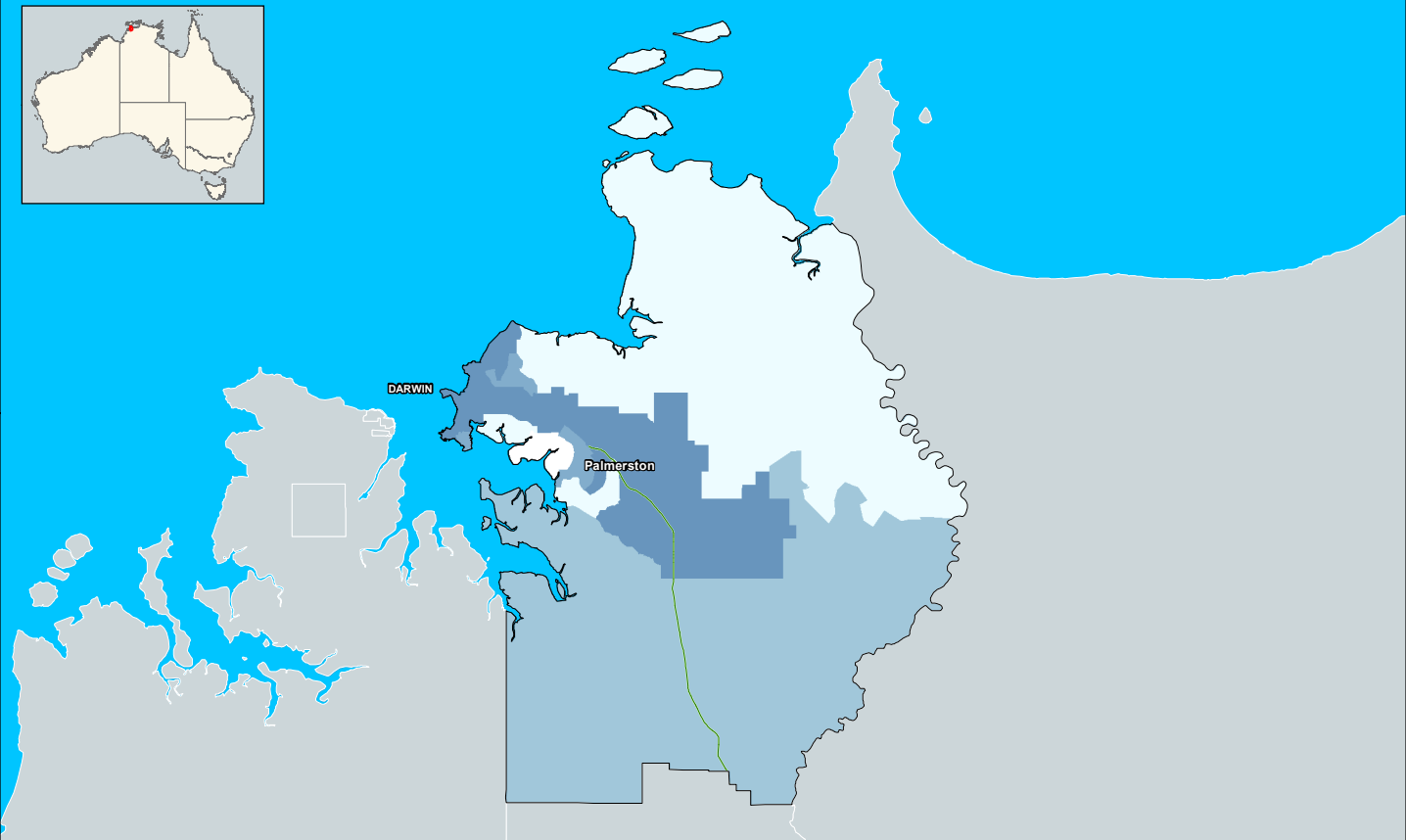
National average income from all sources in Canberra - Queanbeyan 2010 (SA2)



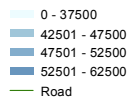
Australian Government
Department of Infrastructure
and Transport



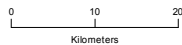
Derived From:
PSMA, ABS 2011 Census, Bureau of Meteorology 2012



Legend



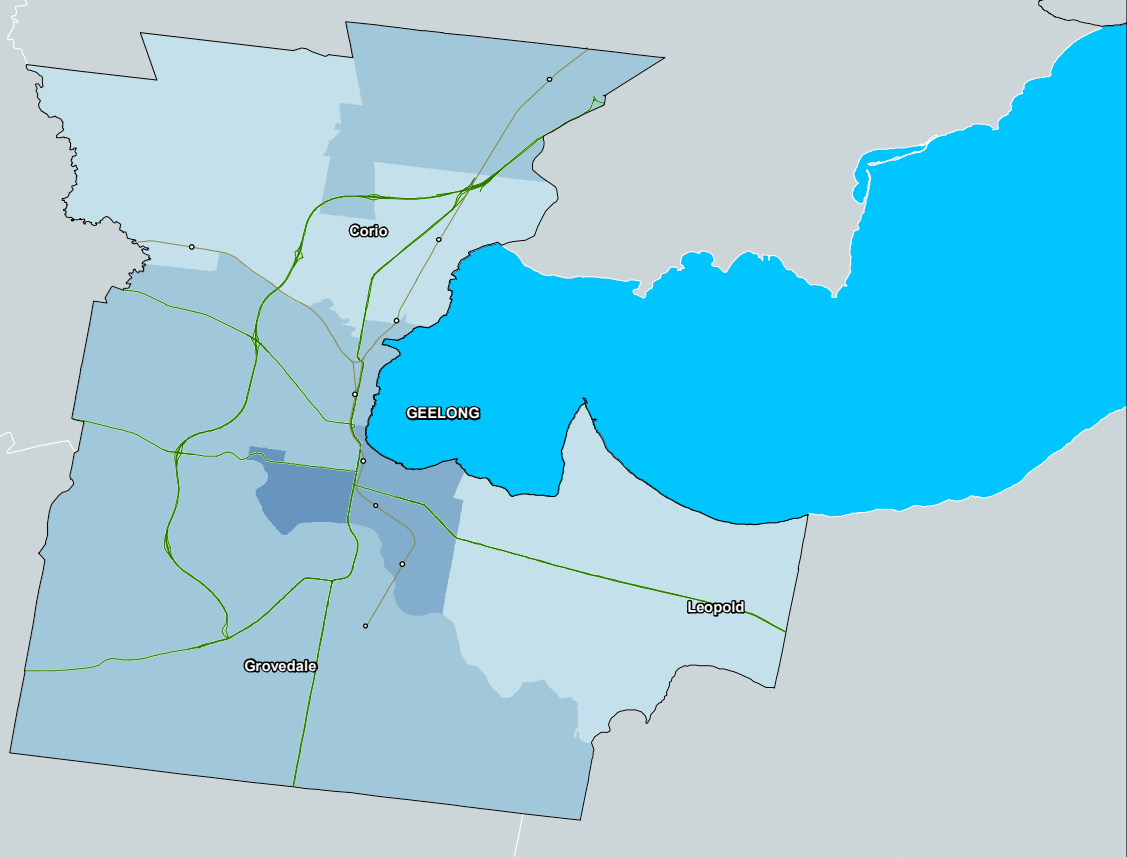
National average income from all sources in Darwin 2010 (SA2)



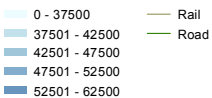
Australian Government
Department of Infrastructure
and Transport



Derived From:
PSMA, ABS 2011 Census, Bureau of Meteorology 2012



Legend



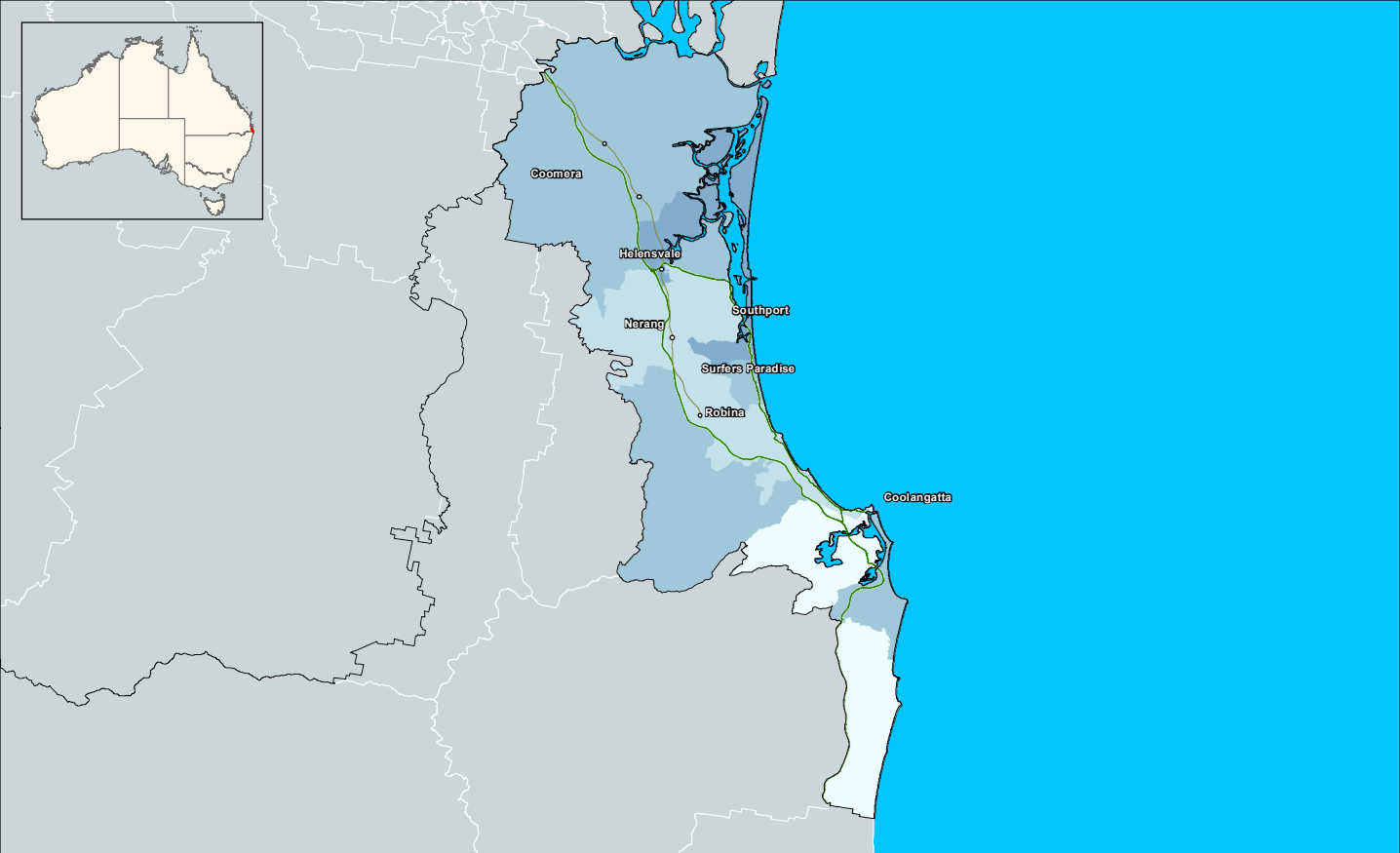
National average income from all sources in Geelong 2010 (SA2)



Australian Government
Department of Infrastructure
and Transport



Derived From:
PSMA, ABS 2011 Census, Bureau of Meteorology 2012



Legend

- 0 - 37500
- 37501 - 42500
- 42501 - 47500
- 47501 - 52500
- Road
- Rail

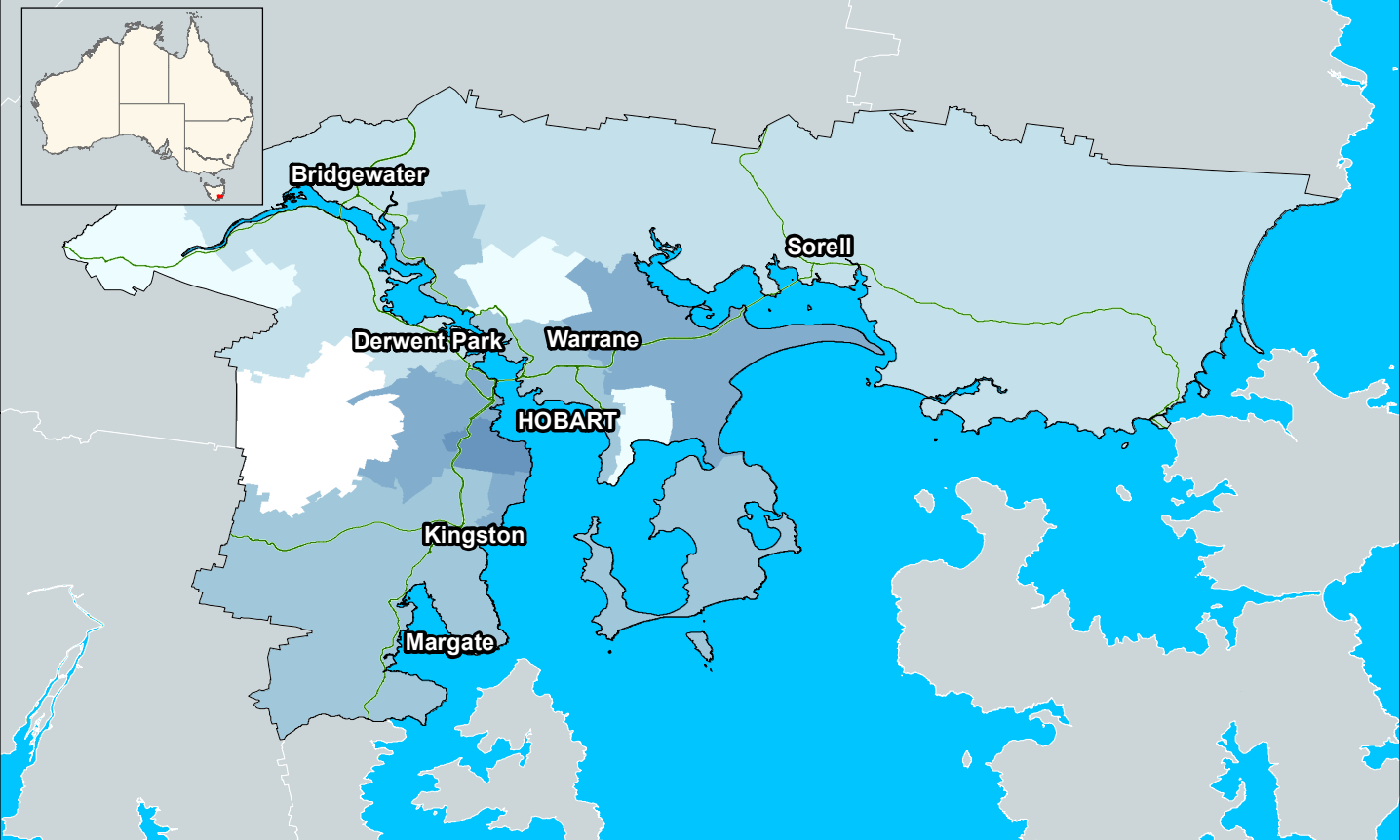
National average income from all sources in Gold Coast - Tweed 2010 (SA2)



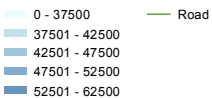
Australian Government
Department of Infrastructure
and Transport



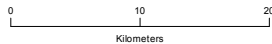
Derived From:
PSMA, ABS 2011 Census, Bureau of Meteorology 2012



Legend



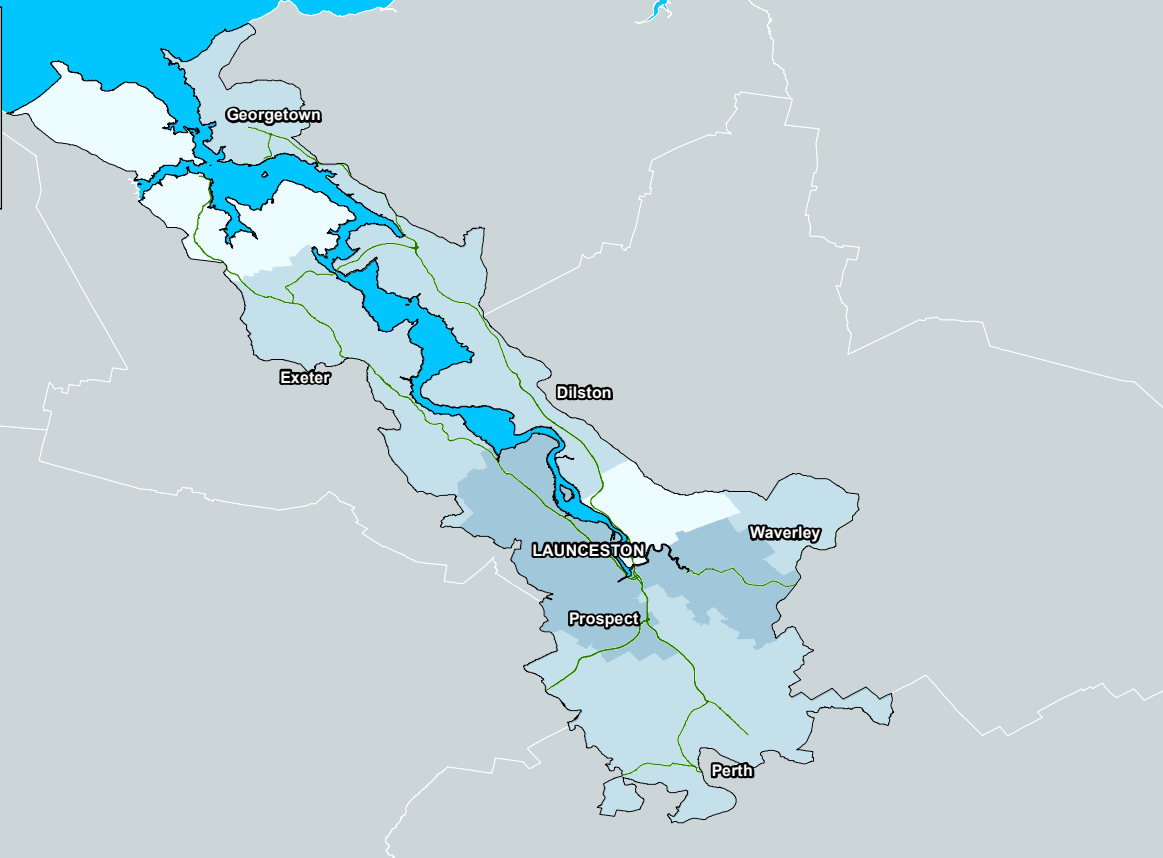
**National average income from all sources in Hobart
2010 (SA2)**



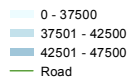
Australian Government
Department of Infrastructure
and Transport



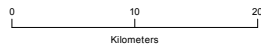
Derived From:
PSMA, ABS 2011 Census, Bureau of Meteorology 2012



Legend



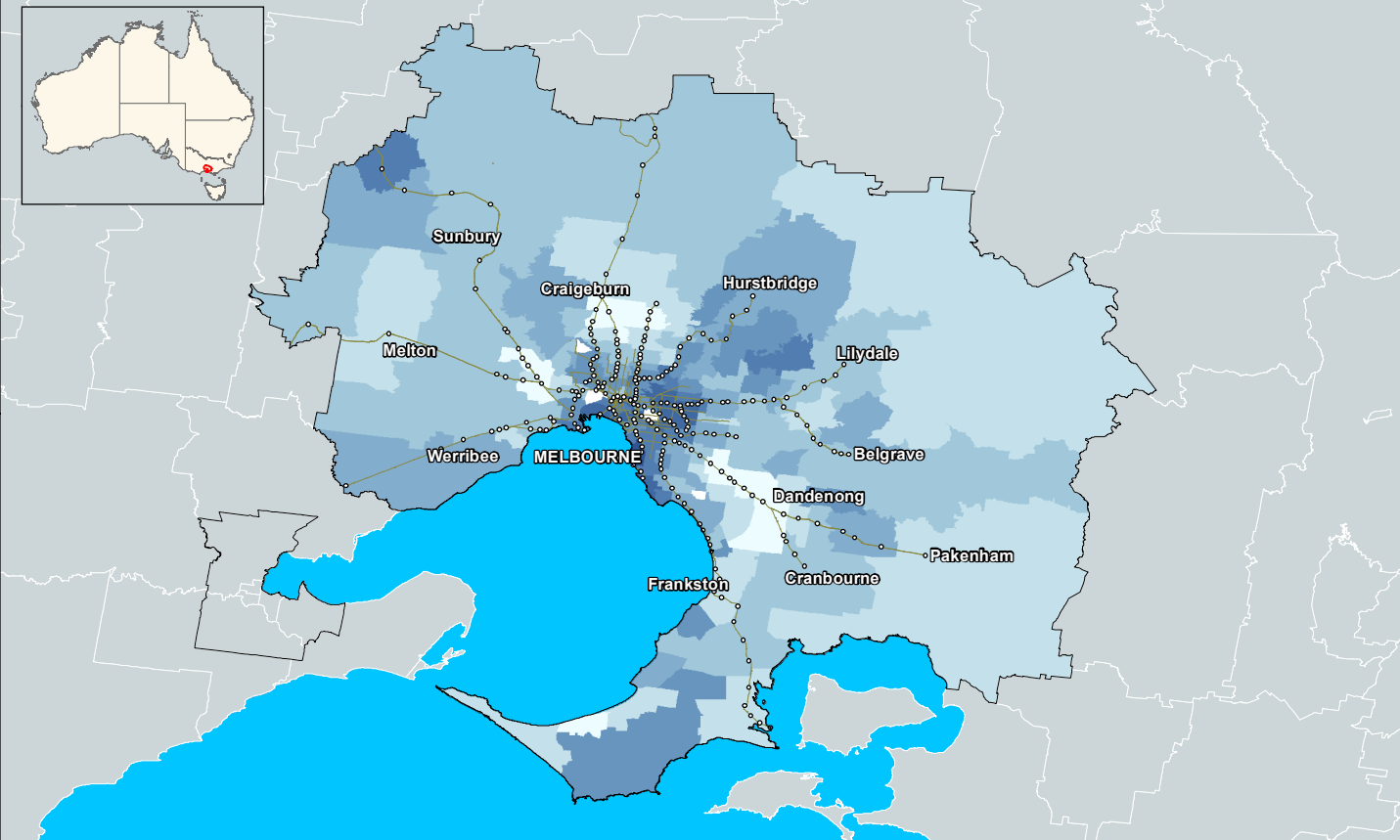
National average income from all sources in Launceston 2010 (SA2)



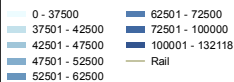
Australian Government
Department of Infrastructure
and Transport



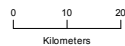
Derived From:
PSMA, ABS 2011 Census, Bureau of Meteorology 2012



Legend



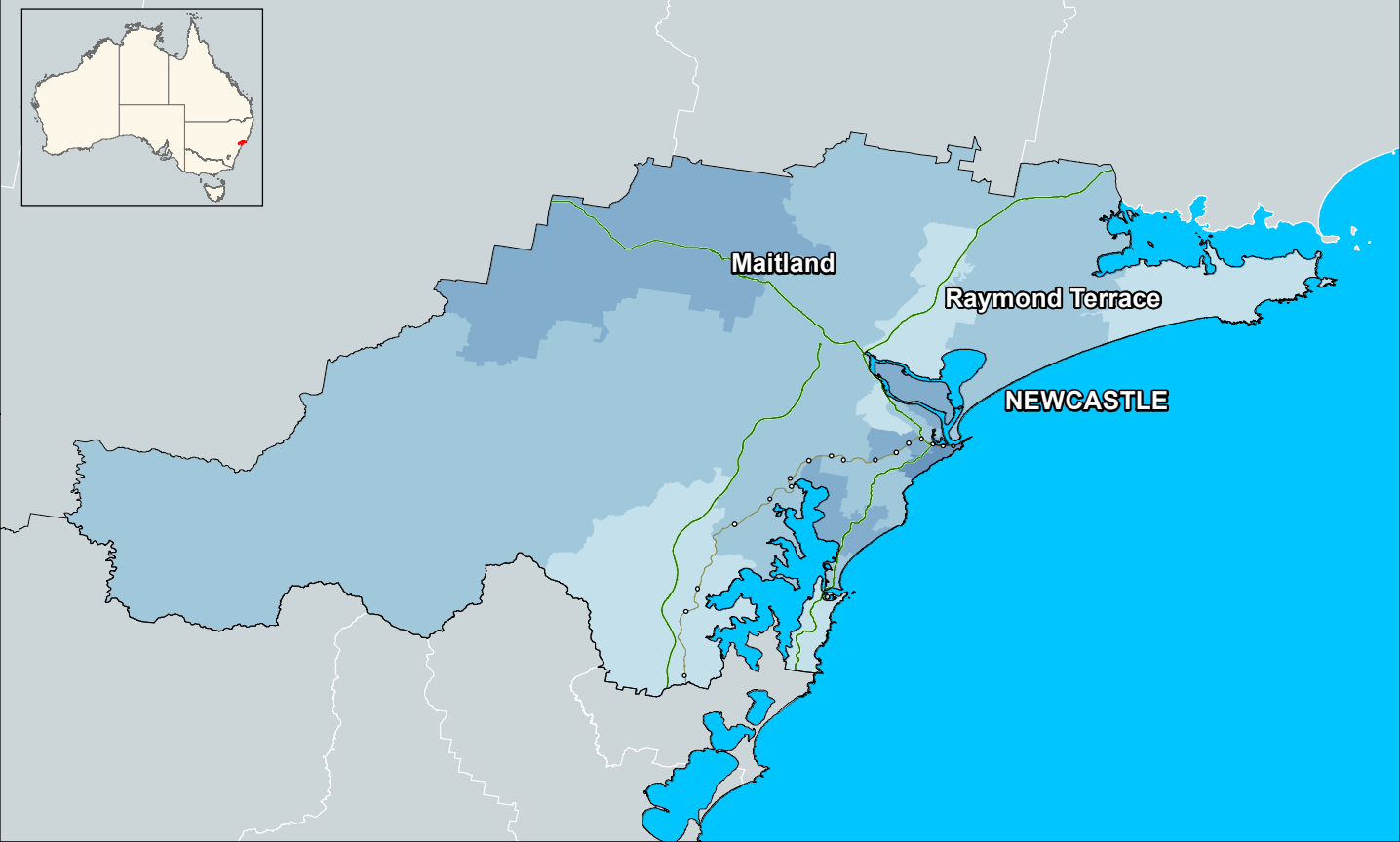
National average income from all sources in Melbourne 2010 (SA2)



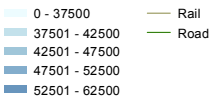
Australian Government
Department of Infrastructure
and Transport



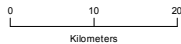
Derived From:
PSMA, ABS 2011 Census, Bureau of Meteorology 2012



Legend



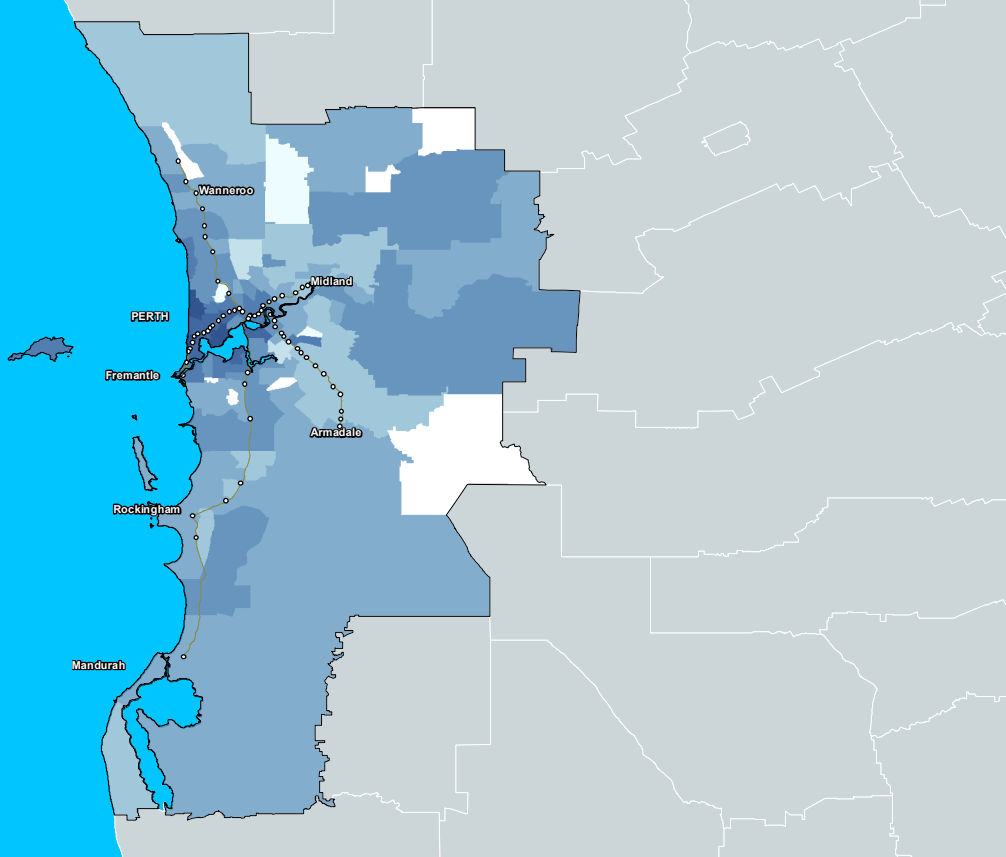
National average income from all sources in Newcastle 2010 (SA2)



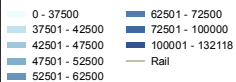
Australian Government
Department of Infrastructure
and Transport



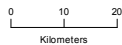
Derived From:
PSMA, ABS 2011 Census, Bureau of Meteorology 2012



Legend



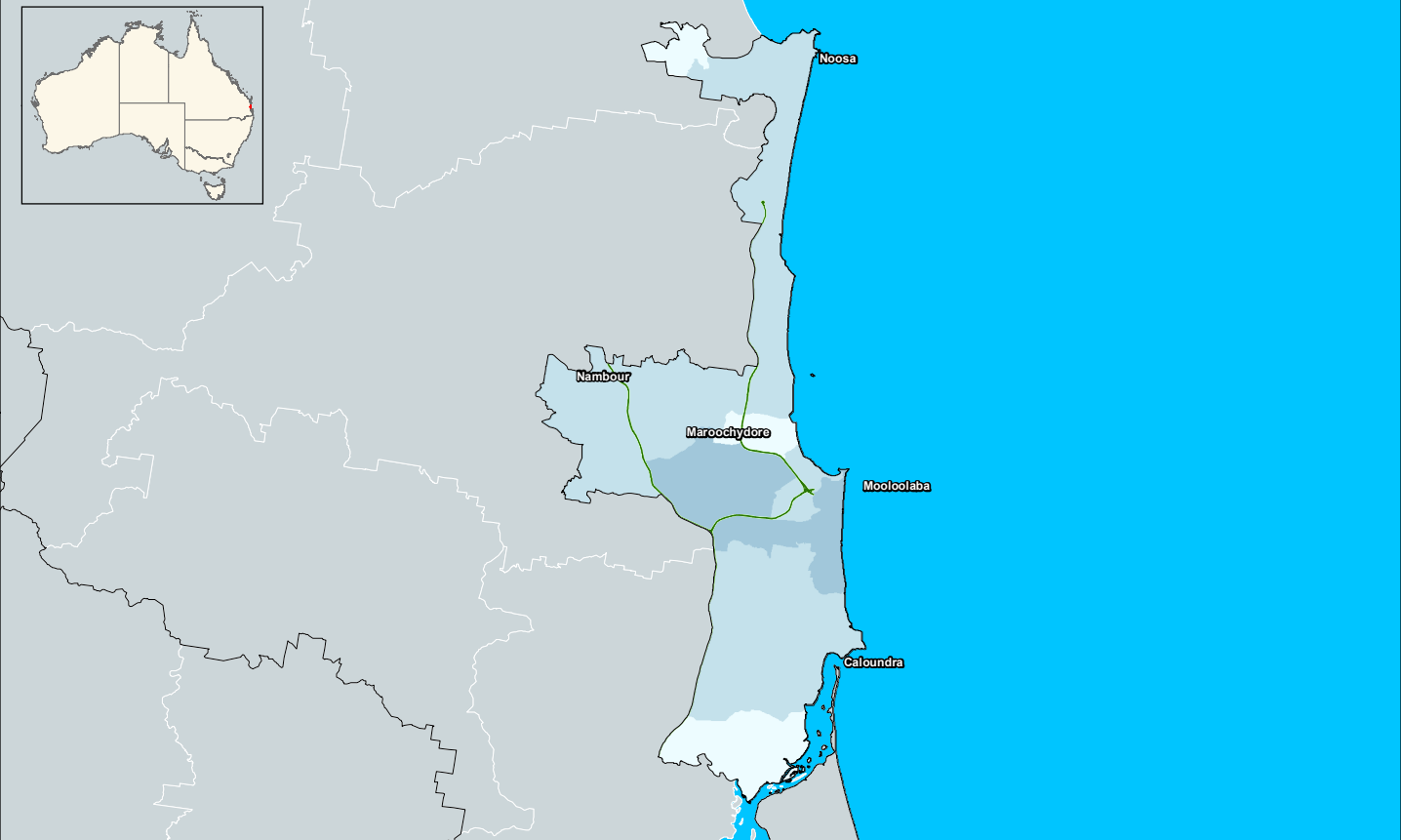
National average income from all sources in Perth 2010 (SA2)



Australian Government
Department of Infrastructure
and Transport



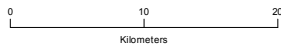
Derived From:
PSMA, ABS 2011 Census, Bureau of Meteorology 2012



Legend

- 0 - 37500
- 37501 - 42500
- 42501 - 47500
- Road

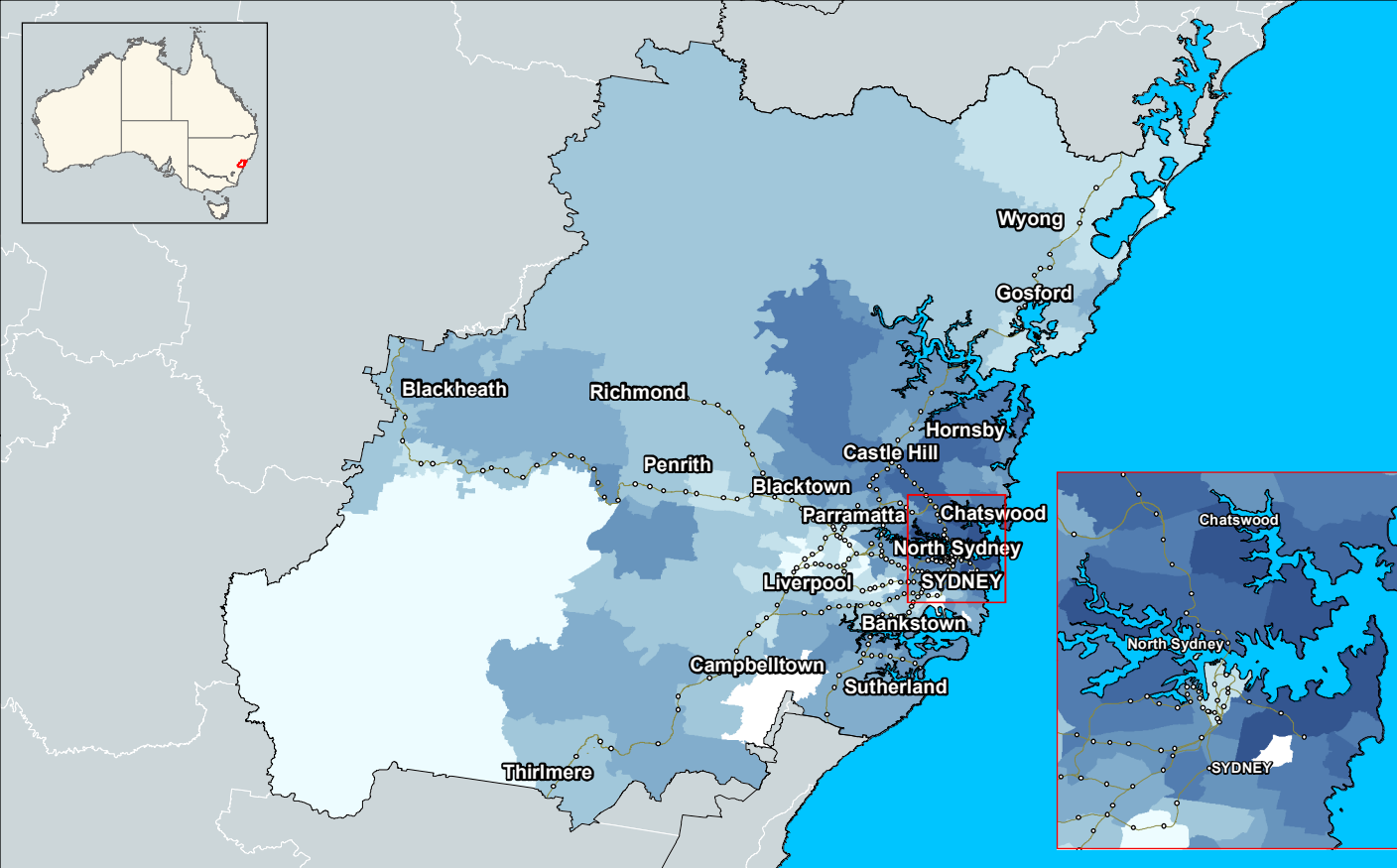
National average income from all sources in Sunshine Coast 2010 (SA2)



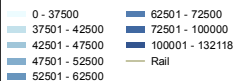
Australian Government
Department of Infrastructure
and Transport



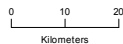
Derived From:
PSMA, ABS 2011 Census, Bureau of Meteorology 2012



Legend



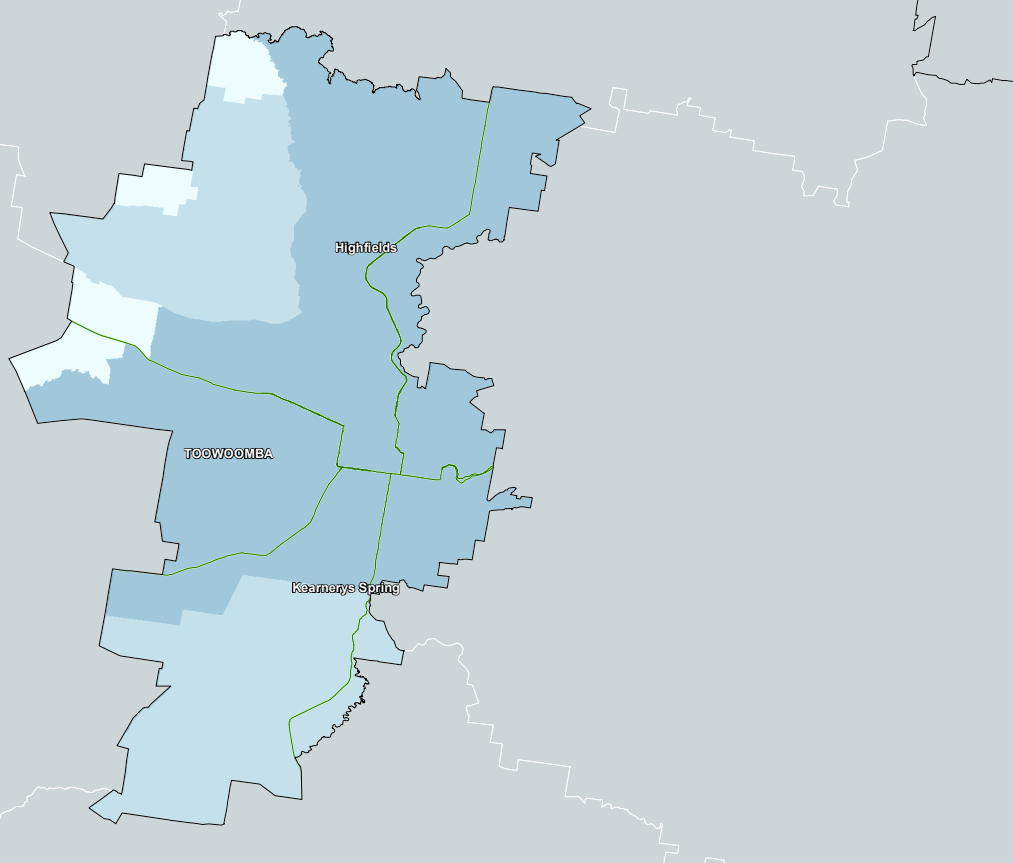
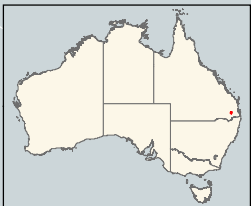
National average income from all sources in Sydney 2010 (SA2)



Australian Government
Department of Infrastructure
and Transport



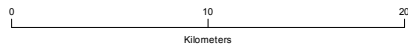
Derived From:
PSMA, ABS 2011 Census, Bureau of Meteorology 2012



Legend

- 0 - 37500
- 37501 - 42500
- 42501 - 47500
- Road

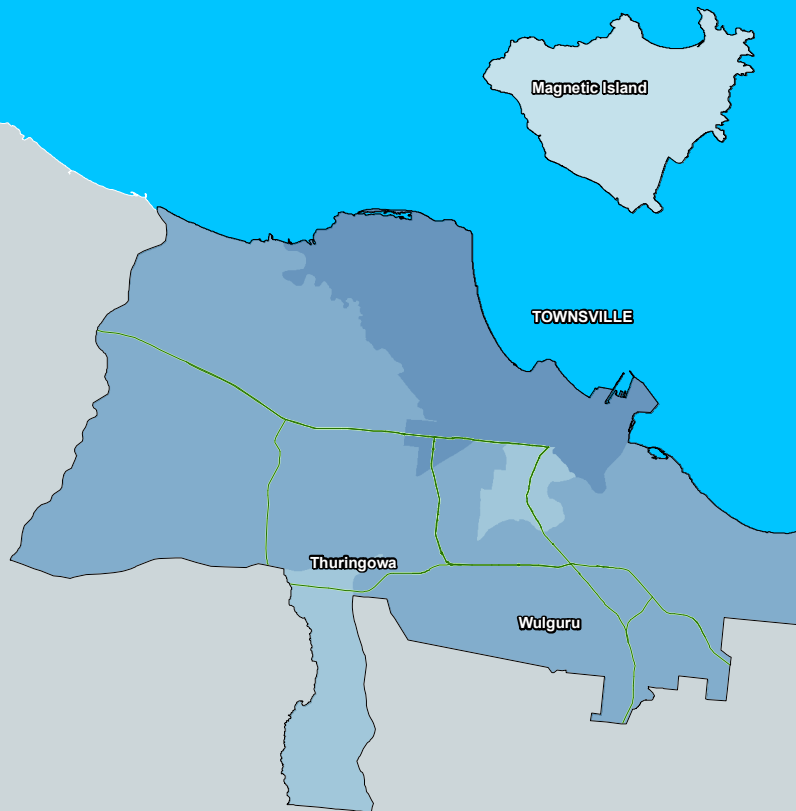
National average income from all sources in Toowoomba 2010 (SA2)



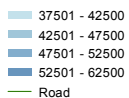
Australian Government
Department of Infrastructure
and Transport



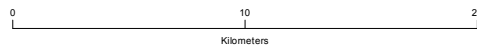
Derived From:
PSMA, ABS 2011 Census, Bureau of Meteorology 2012



Legend



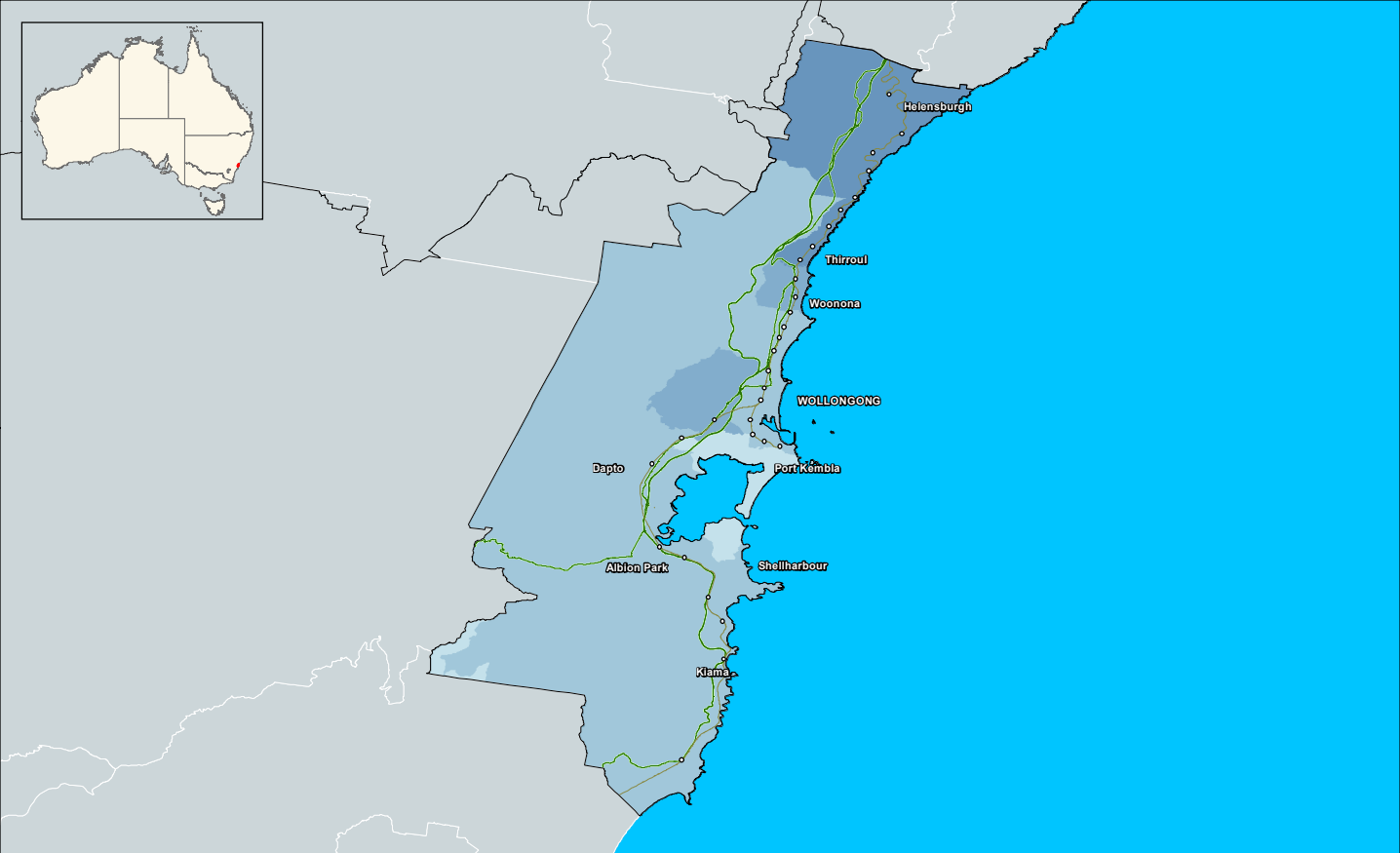
National average income from all sources in Townsville 2010 (SA2)



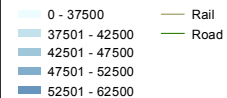
Australian Government
Department of Infrastructure
and Transport



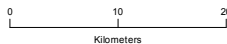
Derived From:
PSMA, ABS 2011 Census, Bureau of Meteorology 2012



Legend



National average income from all sources in Wollongong 2010 (SA2)



Australian Government
Department of Infrastructure
and Transport



Derived From:
PSMA, ABS 2011 Census, Bureau of Meteorology 2012