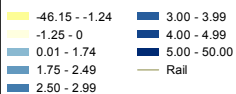
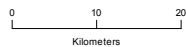


Legend



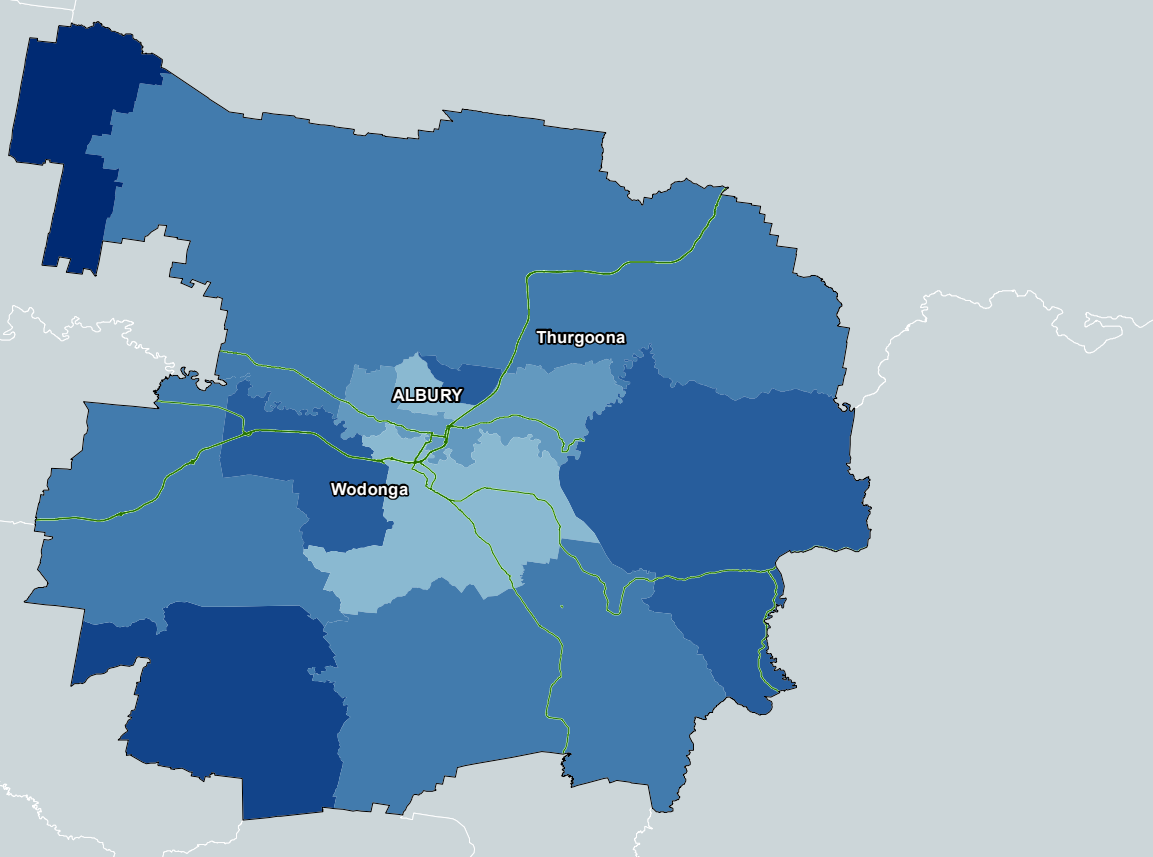
Change in the proportion of the population aged 65 years and over in Adelaide 2001-11 (SA2)



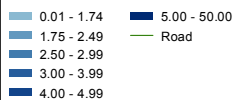
Australian Government
Department of Infrastructure
and Transport



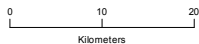
Derived From:
PSMA, ABS 2011 Census, Bureau of Meteorology 2012



Legend



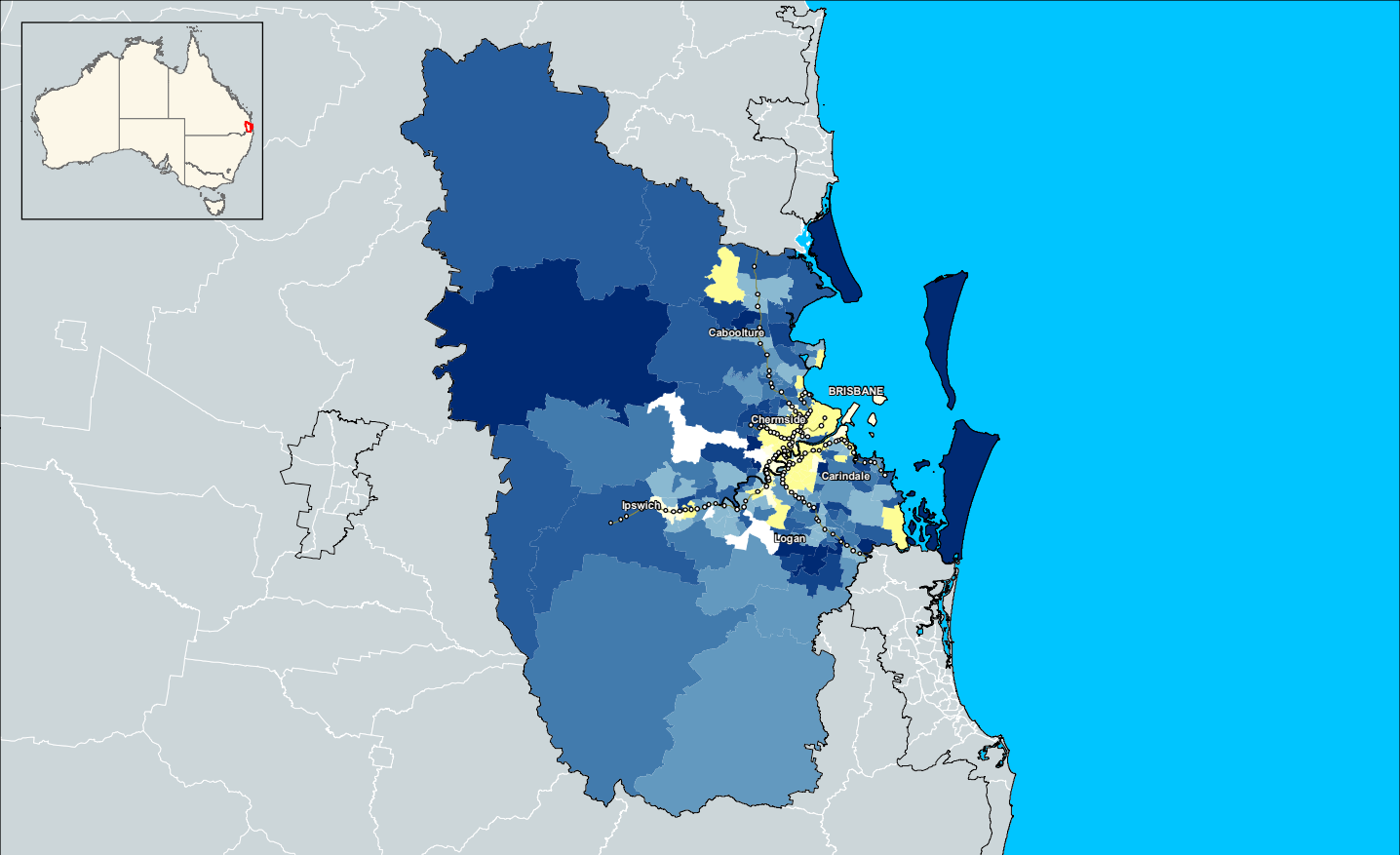
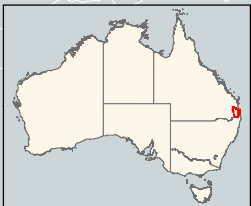
Change in the proportion of the population aged 65 years and over in Albury - Wodonga 2001-11 (SA2)



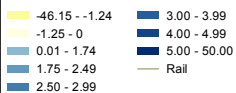
Australian Government
Department of Infrastructure
and Transport



Derived From:
PSMA, ABS 2011 Census, Bureau of Meteorology 2012



Legend



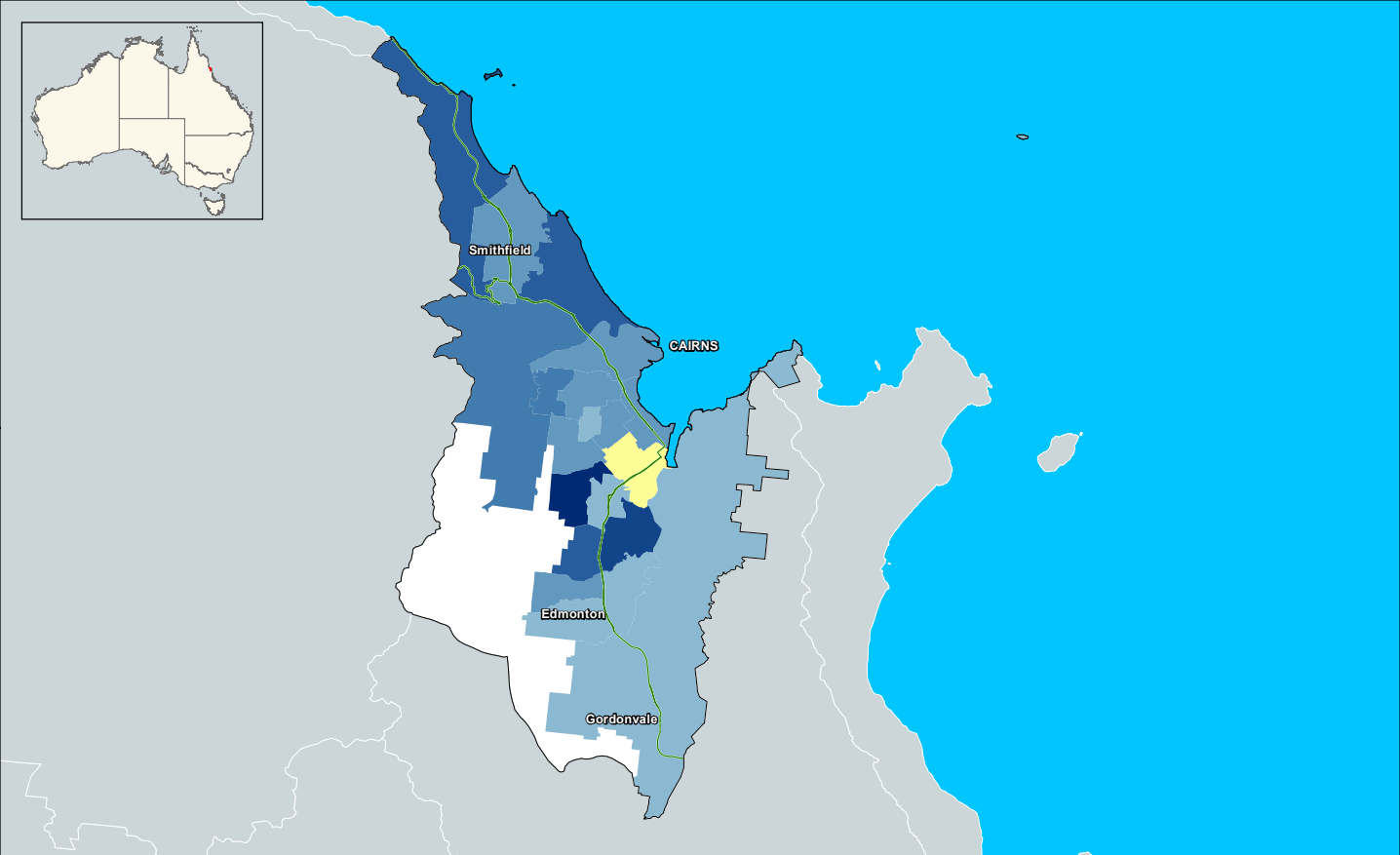
Change in the proportion of the population aged 65 years and over in Brisbane 2001-11 (SA2)



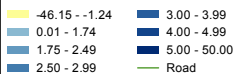
Australian Government
Department of Infrastructure
and Transport



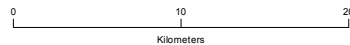
Derived From:
PSMA, ABS 2011 Census, Bureau of Meteorology 2012



Legend



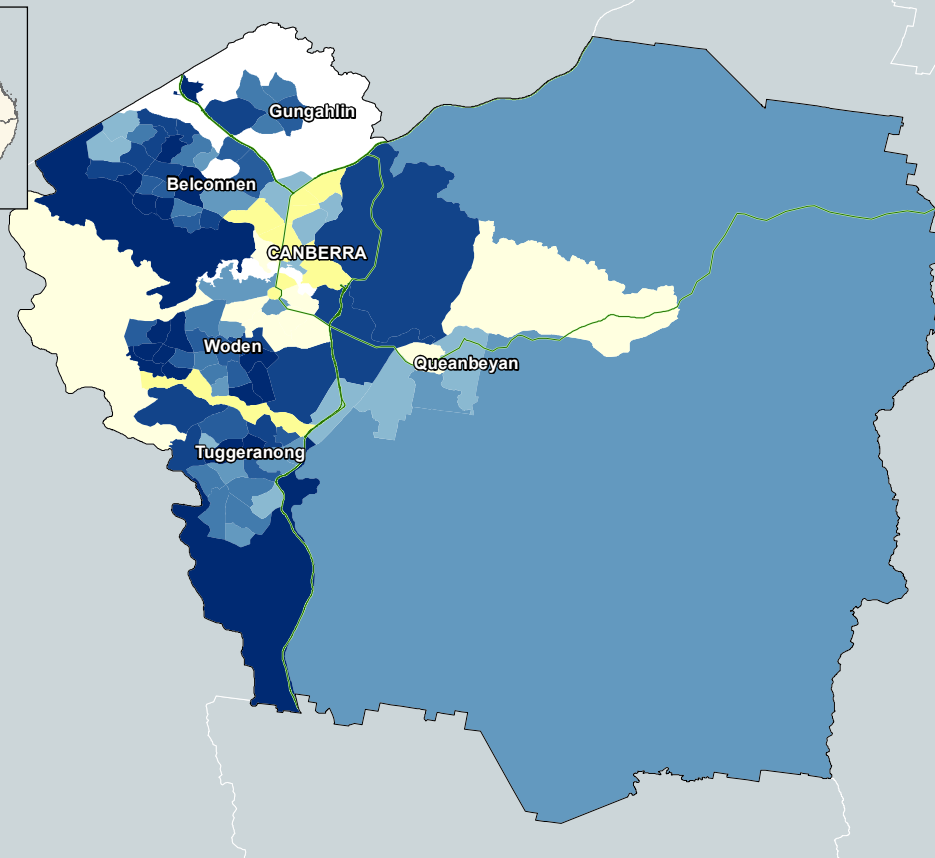
Change in the proportion of the population aged 65 years and over in Cairns 2001-11 (SA2)



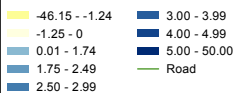
Australian Government
Department of Infrastructure
and Transport



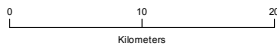
Derived From:
PSMA, ABS 2011 Census, Bureau of Meteorology 2012



Legend



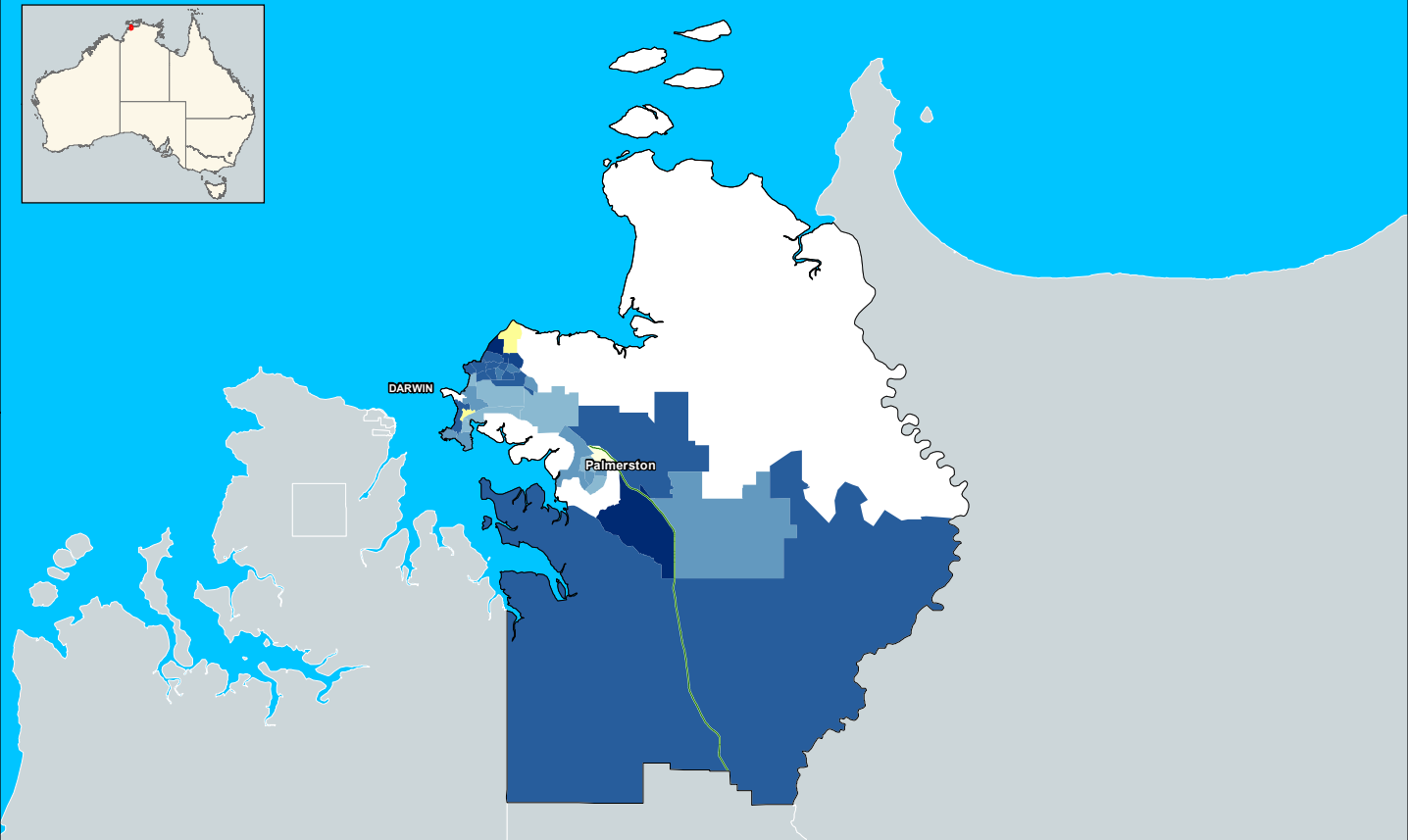
Change in the proportion of the population aged 65 years and over in Canberra - Queanbeyan 2001-11 (SA2)



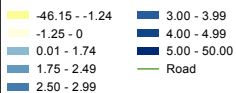
Australian Government
Department of Infrastructure
and Transport



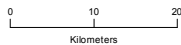
Derived From:
PSMA, ABS 2011 Census, Bureau of Meteorology 2012



Legend



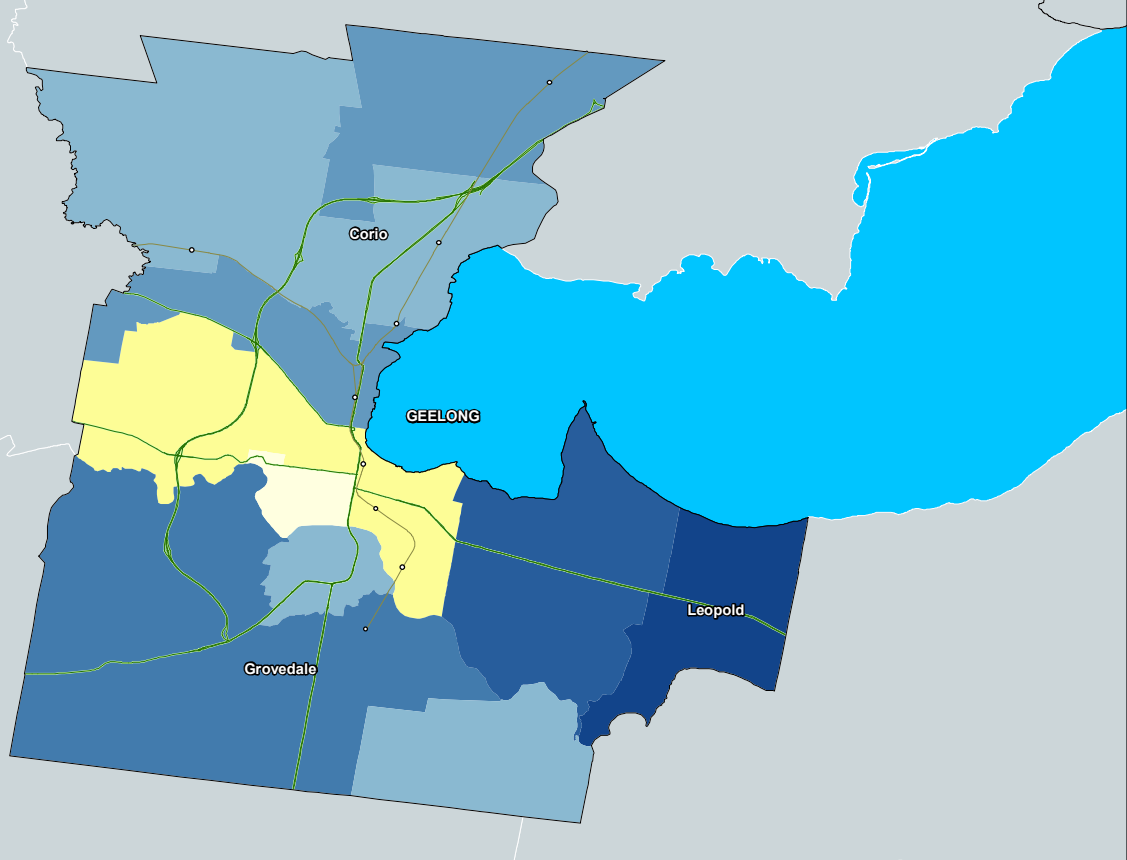
Change in the proportion of the population aged 65 years and over in Darwin 2001-11 (SA2)



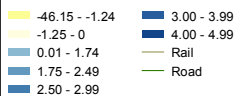
Australian Government
Department of Infrastructure
and Transport



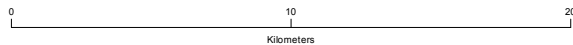
Derived From:
PSMA, ABS 2011 Census, Bureau of Meteorology 2012



Legend



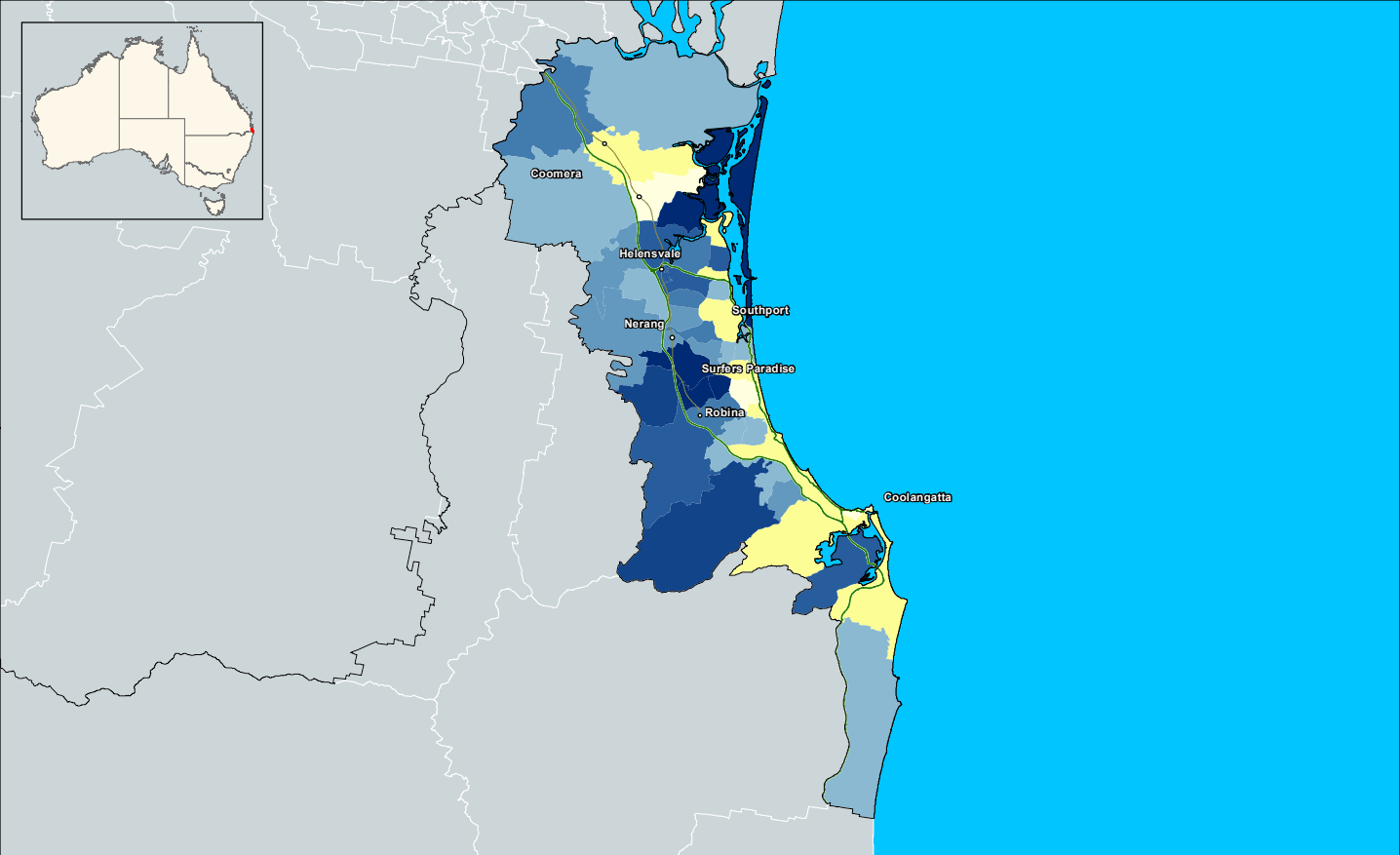
Change in the proportion of the population aged 65 years and over in Geelong 2001-11 (SA2)



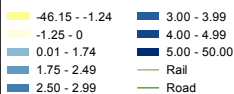
Australian Government
Department of Infrastructure
and Transport



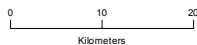
Derived From:
PSMA, ABS 2011 Census, Bureau of Meteorology 2012



Legend



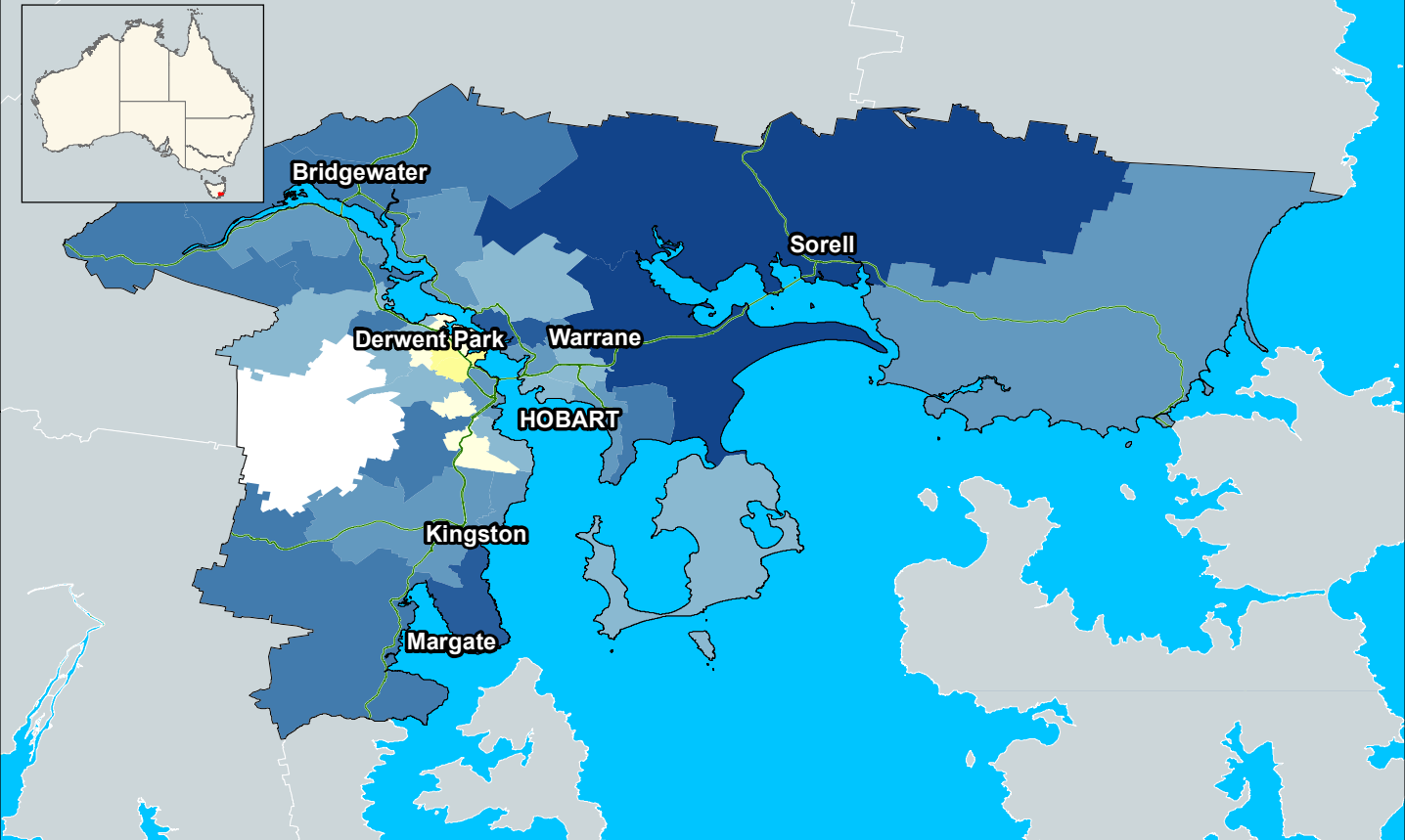
Change in the proportion of the population aged 65 years and over in Gold Coast - Tweed 2001-11 (SA2)



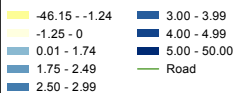
Australian Government
Department of Infrastructure
and Transport



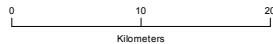
Derived From:
PSMA, ABS 2011 Census, Bureau of Meteorology 2012



Legend



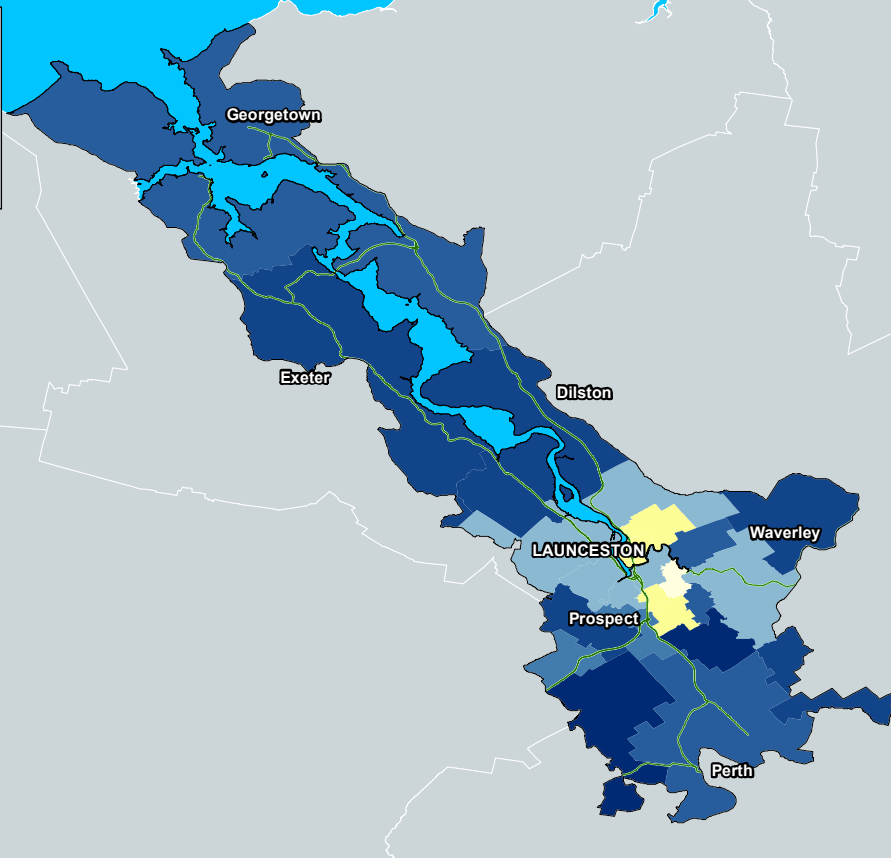
Change in the proportion of the population aged 65 years and over in Hobart 2001-11 (SA2)



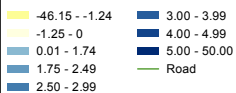
Australian Government
Department of Infrastructure
and Transport



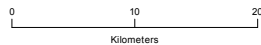
Derived From:
PSMA, ABS 2011 Census, Bureau of Meteorology 2012



Legend



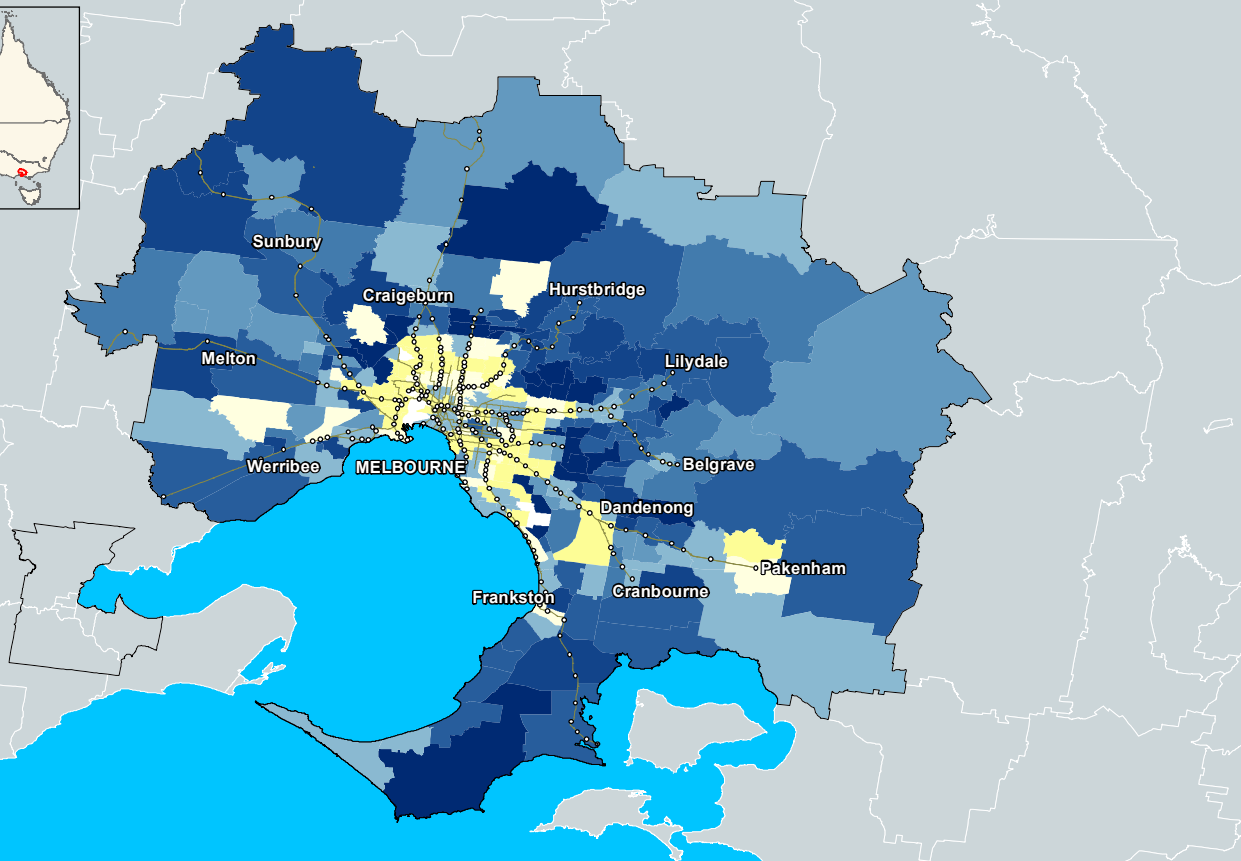
Change in the proportion of the population aged 65 years and over in Launceston 2001-11 (SA2)



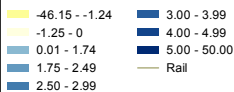
Australian Government
Department of Infrastructure
and Transport



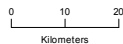
Derived From:
PSMA, ABS 2011 Census, Bureau of Meteorology 2012



Legend



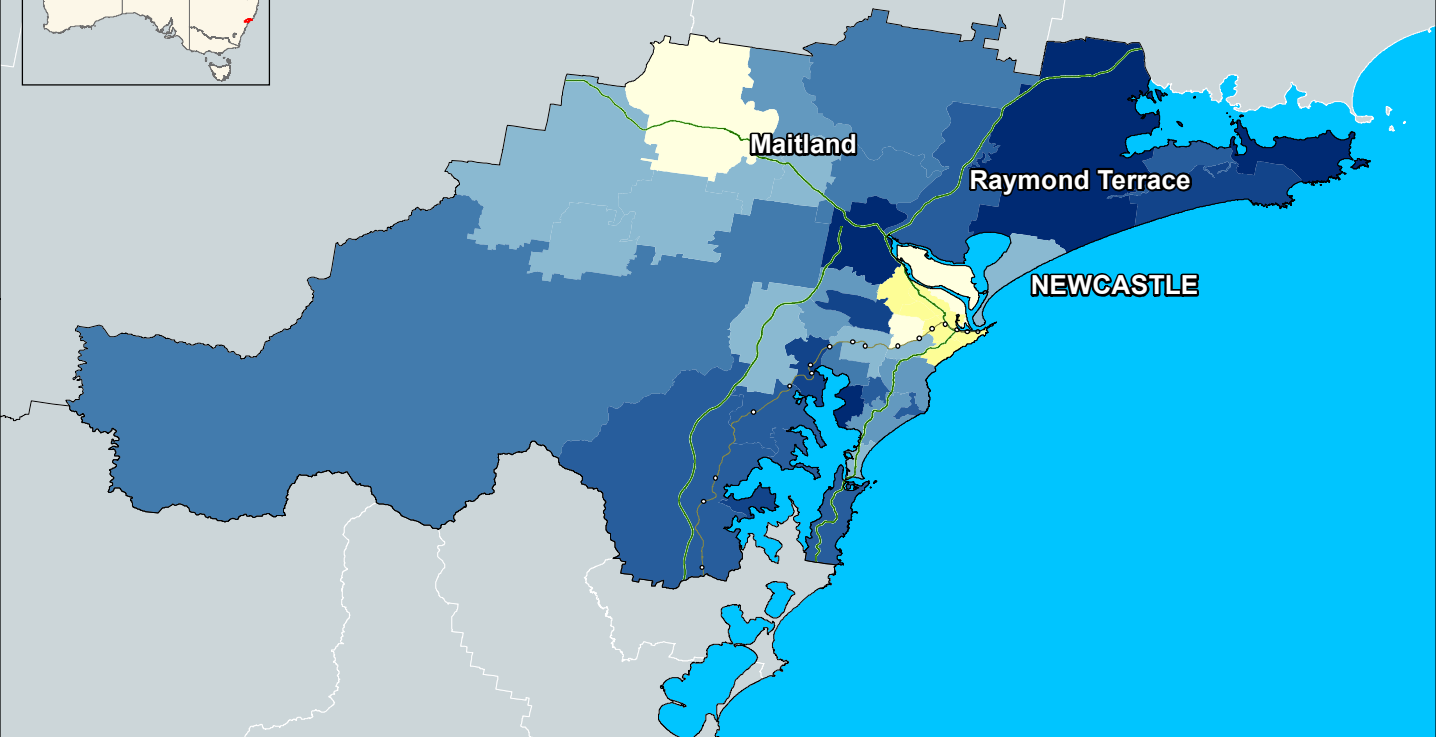
Change in the proportion of the population aged 65 years and over in Melbourne 2001-11 (SA2)



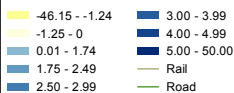
Australian Government
Department of Infrastructure
and Transport



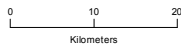
Derived From:
PSMA, ABS 2011 Census, Bureau of Meteorology 2012



Legend



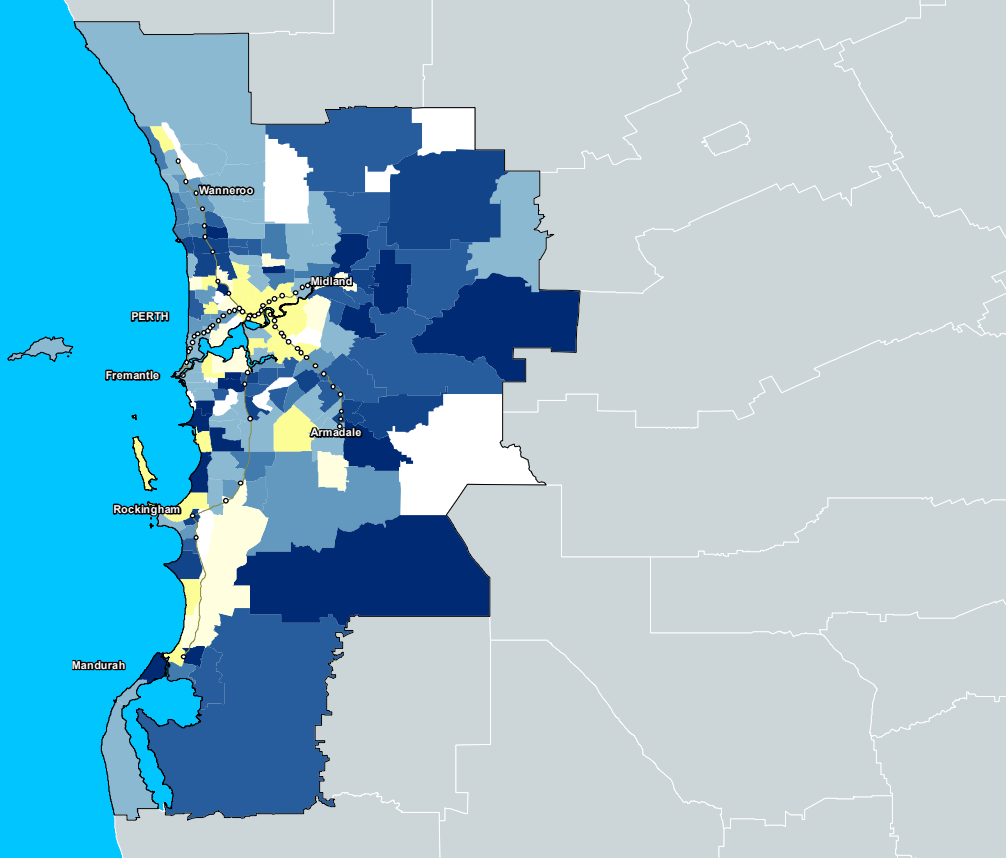
Change in the proportion of the population aged 65 years and over in Newcastle 2001-11 (SA2)



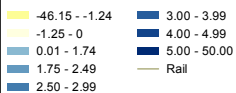
Australian Government
Department of Infrastructure
and Transport



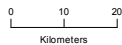
Derived From:
PSMA, ABS 2011 Census, Bureau of Meteorology 2012



Legend



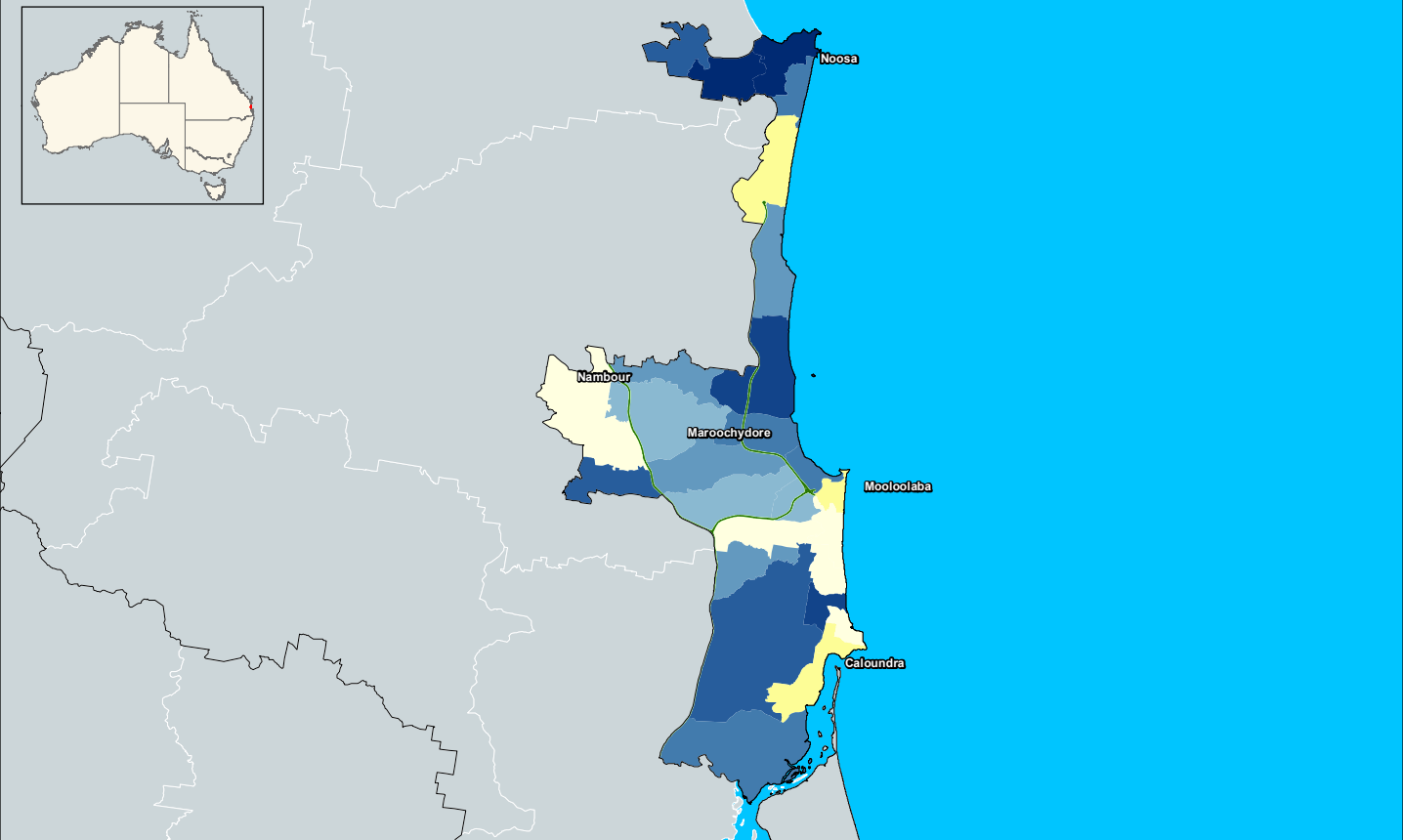
Change in the proportion of the population aged 65 years and over in Perth 2001-11 (SA2)



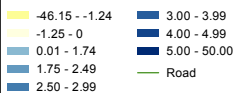
Australian Government
Department of Infrastructure
and Transport



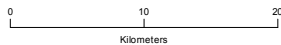
Derived From:
PSMA, ABS 2011 Census, Bureau of Meteorology 2012



Legend



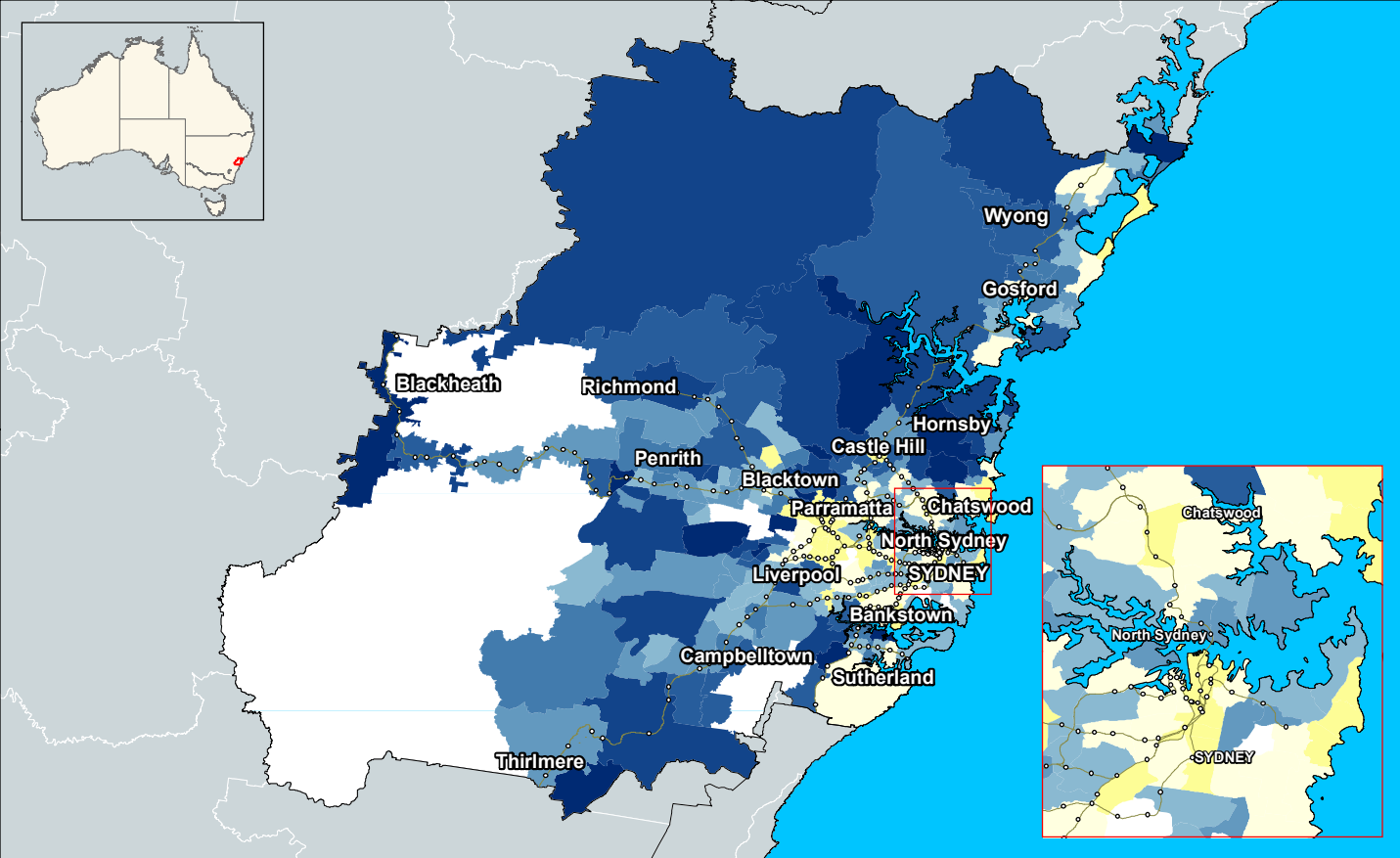
Change in the proportion of the population aged 65 years and over in Sunshine Coast 2001-11 (SA2)



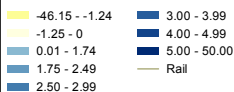
Australian Government
Department of Infrastructure
and Transport



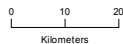
Derived From:
PSMA, ABS 2011 Census, Bureau of Meteorology 2012



Legend



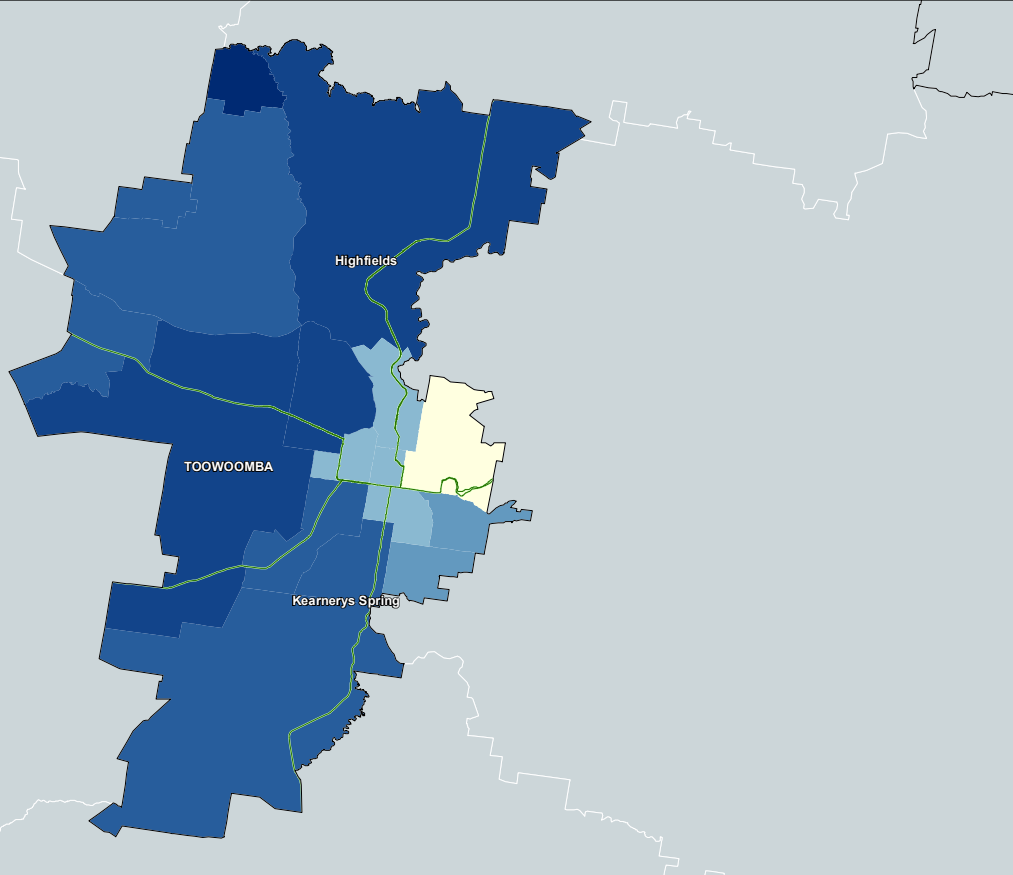
Change in the proportion of the population aged 65 years and over in Sydney 2001-11 (SA2)



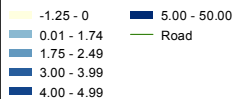
Australian Government
Department of Infrastructure
and Transport



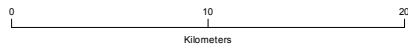
Derived From:
PSMA, ABS 2011 Census, Bureau of Meteorology 2012



Legend



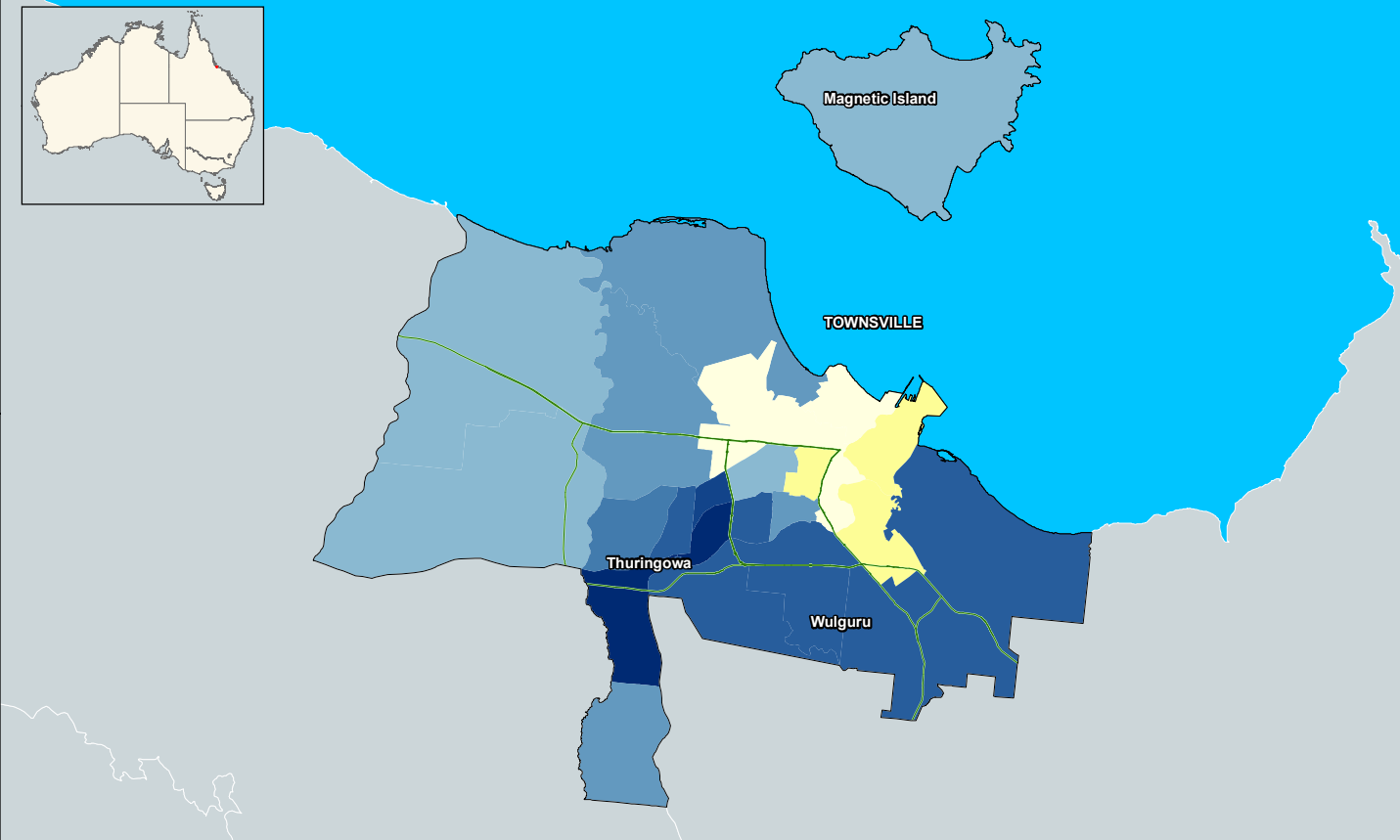
Change in the proportion of the population aged 65 years and over in Toowoomba 2001-11 (SA2)



Australian Government
Department of Infrastructure
and Transport



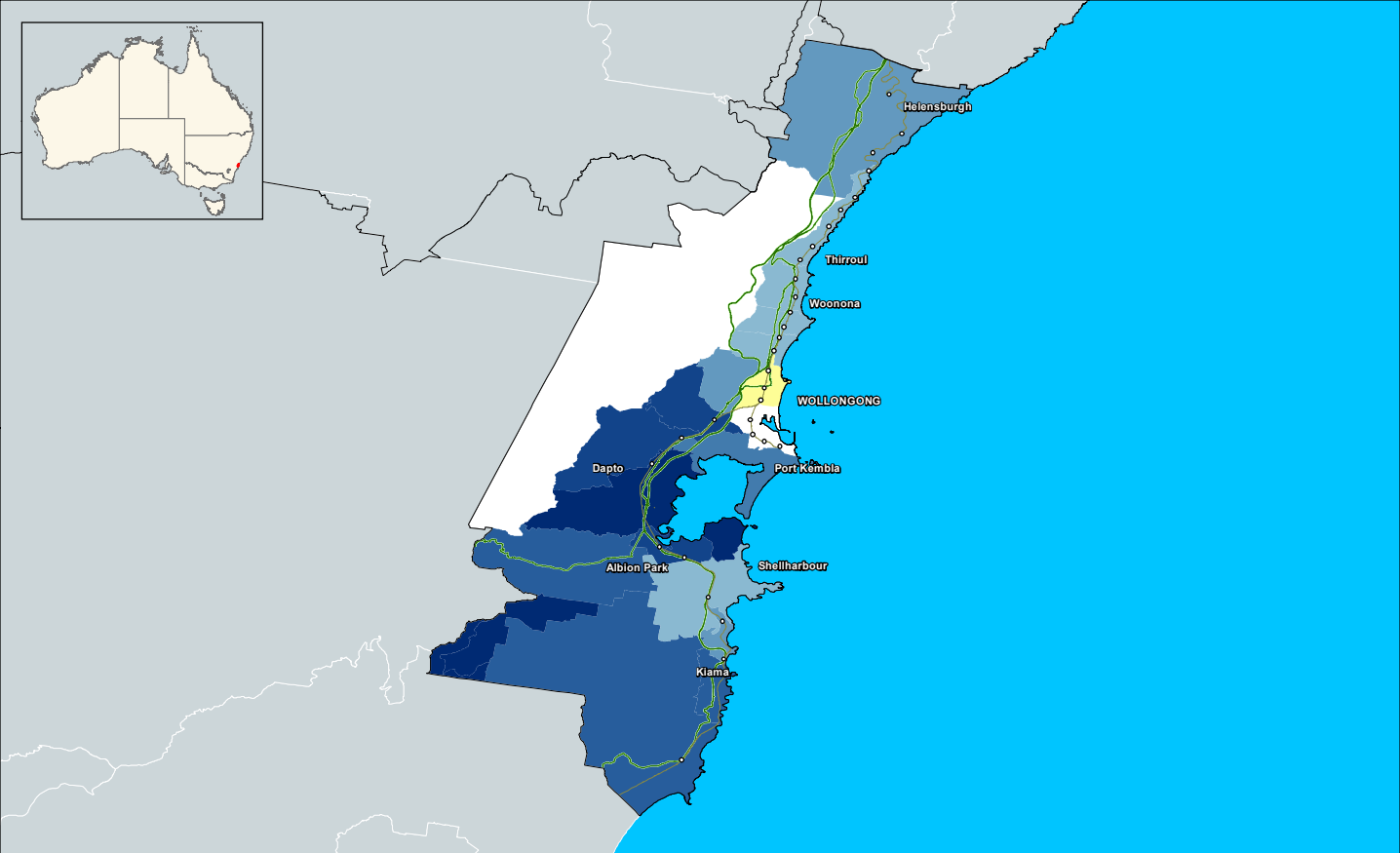
Derived From:
PSMA, ABS 2011 Census, Bureau of Meteorology 2012



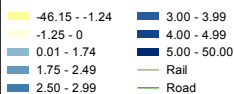
Australian Government
Department of Infrastructure
and Transport



Derived From:
PSMA, ABS 2011 Census, Bureau of Meteorology 2012



Legend



Change in the proportion of the population aged 65 years and over in Wollongong 2001-11 (SA2)



Australian Government
Department of Infrastructure
and Transport



Derived From:
PSMA, ABS 2011 Census, Bureau of Meteorology 2012