

Regional Rail Link Authority

Regional Rail Link Authority
Department of Transport
Level 12, 80 Collins Street,
Melbourne Vic 3000
Mailing address:
PO Box 2797 Melbourne, Vic 3001
Web: www.transport.vic.gov.au/rl

Ref: COR/12/111334

3 December 2012

s47F

A/General Manager
Major Infrastructure Projects Office
Nation Building – Infrastructure Investment Division
Department of Infrastructure and Transport

Dear Ms Buckley

RE: REGIONAL RAIL LINK – MILESTONE PAYMENT 8

I refer to your letter dated 12 October 2012 and in accordance with the Payment Milestone schedule agreed in October 2012, I certify that the following milestone has been achieved:

Milestone 8: Commence construction – West Footscray Station platforms

The documentation to verify that this milestone has been achieved is attached. (ATTACHMENT A)

I further advise that the Regional Rail Link project is currently progressing on program, with no delays to scheduled works on the critical path.

For Schedule B projects in National Partnership Agreement (2009–2014)

Therefore, in accordance with the agreed schedule I request payment of \$150 million from the Building Australia Fund.

Yours sincerely,

s47F

Corey Hannett
Chief Executive Officer
Encl.

Department of Infrastructure and Transport Use ONLY

To CFO

On the basis of the information provided by the Regional Rail Link Authority and our validation, I am satisfied that the milestone for this project has been achieved and payment is due.

s47F

A/ General Manager
Major Infrastructure Projects Board *Office*
Nation Building – Infrastructure Investment Division

Date: 11.12.12



Australian Government

Department of Infrastructure and Regional Development

MINUTE

Andrew Danks
General Manager
Major Infrastructure Projects Office

SUBJECT: PAYMENT MILESTONE 12 FOR REGIONAL RAIL LINK PROJECT

Purpose:

To seek your agreement of Milestone 12 (at Attachment A), based on Regional Rail Link Authority's (RRLA) formal advice that this milestone has been achieved and payment is now due.

Key Issues:

1. On 2 December 2013 a letter from Mr Corey Hannett, Chief Executive Officer of RRLA, was received advising that Milestone 12 - Opening of the rebuilt West Footscray Station at the conclusion of a major rail occupation - had been met and requested that a payment of \$225 million be made from the Building Australia Fund (BAF).
2. The Finance and Major Project Implementation Section, based on a review of RRLA's milestone payment report, considers the proposed payment milestone to be met and as such seek your approval and signature to the milestone certification at Attachment A, certifying that this milestone has been achieved.

Background:

3. Milestones for the Regional Rail Link project were last agreed by RRLA and the Department on 18 November 2013. RRLA's payment claim for Milestone 12 is in accordance with the milestone payment schedule agreed on 28 November 2013 (see Attachment B).
4. As of 2 December 2013, the Commonwealth has provided \$1,747 million to the Regional Rail Link project, out of a total Australian Government commitment of \$3,225 million to the project.

Recommendation:

1. That you **AGREE** and **SIGN** the proposed milestone payment of \$225 million from the BAF to the RRL project (at Attachment A), for the completion of Milestone 12.

<p>s47F</p> <p>[Redacted Signature]</p> <p>Section Head Financing and Major Project Implementation Section</p> <p>2 December 2013</p>	<p><u>R1 SIGNED</u> NOT SIGNED</p> <p>Andrew Danks General Manager Major Infrastructure Projects Office</p> <p>3 December 2013</p>
---	--

Attachments:

- A. Payment Milestone 12 Certification for \$225 million (and supporting documentation).
- B. 28 November 2013 Agreed Milestone Payment Schedule.

25 November 2013

Ref: COR/13/153645

Mr Andrew Jaggers
Executive Director
Major Infrastructure Projects Office
Nation Building – Infrastructure Investment Division
Department of Infrastructure and Transport

Andrew
Dear Andrew

RE: REGIONAL RAIL LINK – MILESTONE PAYMENT 12

I refer to my letter to you dated 18 November 2013 and the response to that letter from Andrew Danks A/g General Manager wherein the project milestones for payments from the Australian Government were agreed for its contribution to the Regional Rail Link project were agreed.

In accordance with that agreement I certify that the following milestone has been achieved:

Milestone 12: Opening of the rebuilt West Footscray Station at the conclusion of a major rail occupation.

The documentation to verify that this milestone has been achieved is attached. (ATTACHMENT A)

I look forward to showing you the project's works, through a site tour in the near future.

For Schedule B projects in National Partnership Agreement (2009–2014)

Therefore, in accordance with the agreed schedule, I request payment of \$225 million from the Building Australia Fund.

Yours sincerely,

s47F

Corey Hannett
Chief Executive Officer
Encl.

Department of Infrastructure and Transport Use ONLY

To CFO

On the basis of the information provided by the Regional Rail Link Authority and our validation, I am satisfied that the milestone for this project has been achieved and payment is due.

s47F

s47F
Andrew Jaggers
Executive Director
Major Infrastructure Projects Board
Nation Building – Infrastructure Investment Division

Date: 3-12-13

Regional Rail Link Authority

West Footscray Station – October Occupation Milestone 12 Payment Report October 2013



Australian Government

www.regionalraillink.vic.gov.au



1 Background Occupation Works

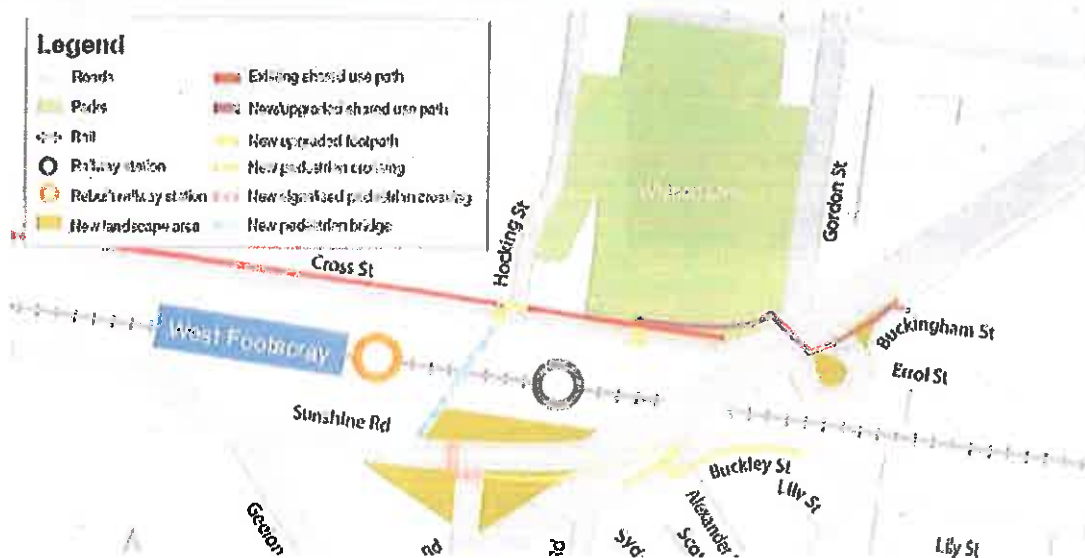
From time to time, in order to undertake works safely, operating rail tracks must be occupied by the project with the rail lines shutdown. Often the shutdown is for a relatively short period for example, overnight or over a weekend. However, on occasion, in order to undertake the works efficiently, a lengthy occupation is required.

From 3 to 13 October 2013, the Sunbury, Bendigo and Ballarat lines were shutdown so that major works on the Regional Rail Link project could be undertaken.

Construction carried out during this period included:

- major works at the rebuilt West Footscray railway station, including the opening of the new station footbridge and demolition works at the existing West Footscray railway station, leading to the operational opening of the new station on 14 October 2013;
- continued works to remove two level crossings at Anderson Road, Sunshine;
- significant bridge works at Nicholson Street, Footscray and Hopkins Street, Footscray;
- ongoing construction works to upgrade Sunshine and Footscray railway stations;
- extensive track and signalling works to connect the existing Ballarat line to the new Regional Rail Link tracks in Deer Park;
- installation of beams and a deck pour at Christies Road bridge, Ravenhall;
- signalling works at the Robinsons Road (Deer Park) and Fitzgerald Road (Ardeer) level crossings and upgrade works at pedestrian crossings between Sunshine and Deer Park;
- structural work on the freight flyover in Footscray;
- extensive retaining wall works and utility installation works; and
- remote upgrades to train control systems.

The following map illustrates the location of West Footscray station:



3.2 Aerial View of the location of the rebuilt West Footscray Station, following car parking completed.



3.3 Demolition of the old West Footscray Station



3.5 New ramps and footbridge being used



3.7 Other works during the October 2013 occupation



Installation of the final walk way spans on the North Melbourne flyover



Ballarat line at Robinsons Road

COR/13/146843

18 November 2013

Andrew Jaggers
Executive Director
Infrastructure Investment Division
Department of Infrastructure and Regional Development
GPO Box 594
Canberra ACT 2601


Dear Andrew

RE: REGIONAL RAIL LINK PROJECT COST PLAN

I am happy to report that the Regional Rail Link project continues to progress well, with all work packages achieving milestones on program. On the current target program the RRL project works will be completed by late 2014.

Please find enclosed the proposed Cost Plan for payment of the Australian Government's contribution to the Regional Rail Link project. I understand that the Cost Plan has been discussed with your staff.

If you require any further information please s47F  Director, Governance and Reporting on s47F 

Yours sincerely,

s47F 

COREY HANNETT
Chief Executive Officer
Encl.



Cost Plan - Regional Rail Link

Date of publication:

[illegible]

Students:



MINUTE

Andrew Danks
General Manager
Major Infrastructure Projects Office

SUBJECT: PAYMENT MILESTONE 13 FOR REGIONAL RAIL LINK PROJECT

Purpose:

To seek your agreement of Milestone 13 (at Attachment A), based on Regional Rail Link Authority's (RRLA) formal advice that this milestone has been achieved and payment is now due.

Key Issues:

1. On 12 March 2013 a letter from Mr Corey Hannett, Chief Executive Officer of RRLA, was received advising that Milestone 13: Completion of works during the major rail occupation December 2013 – January 2014 - had been met and requested that a payment of \$225 million be made from the Building Australia Fund (BAF).
2. The Finance and Major Project Implementation Section, based on a review of RRLA's milestone payment report, considers the proposed payment milestone to be met and as such seek your approval and signature to the milestone certification at Attachment A, certifying that this milestone has been achieved.

Background:

3. Milestones for the Regional Rail Link project were last agreed by RRLA and the Department on 18 November 2013. RRLA's payment claim for Milestone 13 is in accordance with the milestone payment schedule agreed on 28 November 2013 (see Attachment B).
4. As of 12 March 2013, the Commonwealth has provided \$1,972 million to the Regional Rail Link project, out of a total Australian Government commitment of \$3,225 million to the project.

Recommendation:

1. That you **AGREE** and **SIGN** the proposed milestone payment of \$225 million from the BAF to the RRL project (at Attachment A), for the completion of Milestone 13.

<p>s47F</p> <p>[Redacted]</p> <p>Section Head Financing and Major Project Implementation Section</p> <p>12 March 2014</p>	<p>RI SIGNED / NOT SIGNED</p> <p>s47F</p> <p>[Redacted]</p> <p>Andrew Danks General Manager Major Infrastructure Projects Office</p> <p>13 March 2014</p>
---	---

Attachments:

- A. Payment Milestone 13 Certification for \$225 million (and supporting documentation).
- B. 28 November 2013 Agreed Milestone Payment Schedule.

...and
...

Ref: COR/14/30005

11 March 2013

Mr Andrew Jaggers
Executive Director
Major Infrastructure Projects Office
Nation Building – Infrastructure Investment Division
Department of Infrastructure and Transport

Dear Andrew

RE: REGIONAL RAIL LINK – MILESTONE PAYMENT 13

I refer to the Regional Rail Link project Cost Plan as agreed between your Department and the Regional Rail Link Authority in November 2013.

I certify that the following milestone has been achieved:

Milestone 13: Completion of works during the major rail occupation December 2013 – January 2014.

The documentation to verify that this milestone has been achieved is attached. (ATTACHMENT A)

I further advise that the Regional Rail Link project is currently progressing on program, with no delays to scheduled works on the critical path.

For Schedule B projects in National Partnership Agreement (2009–2014)

Therefore, in accordance with the agreed schedule I request payment of \$225 million from the Building Australia Fund.

Yours sincerely,

s47F

Allen Garner
A/Chief Executive Officer
Encl.

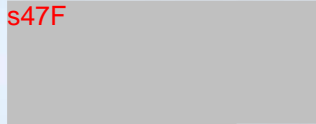


Department of Infrastructure and Transport Use ONLY

To CFO

On the basis of the information provided by the Regional Rail Link Authority and our validation, I am satisfied that the milestone for this project has been achieved and payment is due.

s47F



s47F

~~Andrew Jaggers~~ *Ag General Manager*
Executive Director
Major Infrastructure Projects Board
Nation Building – Infrastructure Investment Division

Date: *13-4-12*

Regional Rail Link Authority

December 2013/January 2014 Occupation Works Commonwealth Milestone Report – Milestone 13

March 2014



Australian Government

www.regionalraillink.vic.gov.au



Contents

Background.....	3
Scope of works	3
Progress	4
1.1 Statistics	4
1.2 Works	4
1.3 Media releases	4

Background

The delivery of the Regional Rail Link (RRL) project in the brownfields area, that is within existing rail corridors adjacent to existing operational rail infrastructure, requires the occupation or shutdown of those operational lines, in order to the RRL works to be safely and efficiently undertaken.

Whilst the majority of the occupations are overnight or on weekends, extended occupations are required from time to time to undertake concurrent major works along the corridor.

The first major occupation was undertaken prior to contract award, in July 2011 for the slew of the tracks at Tottenham (Funding Milestone 4). These longer occupations are generally scheduled during Victorian school holidays to minimize commuter disruption.

During the Victorian summer school holidays in December 2013/ January 2014 the longest occupation of the RRL project was successfully undertaken from 27 December 2013 to 19 January 2014. This occupation not only saw major infrastructure milestones completed but also required major logistics works with rail replacement buses also required to operate over the busy New Year's eve period.

Scope of works

During the occupations works were undertaken by the City to Maribyrnong River, the Footscray to Deer Park and the Rail Systems project teams. The works included the following:

These works include:

- Connection of the standard gauge mainline to the new ARTC Freight Link Track at E Gate;
- Major refurbishment of the North Melbourne flyover and works to the up and down approaches;
- Track reconfiguration between the North Melbourne flyover and La Trobe Street to facilitate the new approach into SXS 1-8;
- Works on the Anderson Road (Ballarat) grade separation;
- Bridge works over the standard gauge mainline at Footscray;
- Installation and commissioning of various ICT equipment;
- Station works at Sunshine.

Progress

1.1 Statistics

Here are some interesting facts from the occupation period:

- Almost 300 buses/coaches were used to replace the rail services;
- Over 21,000 passengers were carried each direction each weekday;
- 17 km of track was laid;
- 56,000 (approx.) brochures were handed out to commuters providing information about the works;
- over 500kg of sausages were cooked by the Rotary Club of Flemington, for commuters;
- over 5,400 pieces of fruit were provided free to commuters;
- over 1,400 people worked around the clock;
- 390 volunteer hours were worked by the Rotary Club to support the sausage sizzle;
- over 350,000 man hours of work were undertaken; and
- over \$60 million worth of infrastructure was delivered.

1.2 Works

All scheduled critical path works were completed during the two occupations. Works carried out during the three week rail closure included:

- a new pedestrian concourse at Sunshine station opened;
- new platforms 1 and 2 at Footscray station opened;
- demolition and installation of the new HV McKay footbridge in Sunshine;
- grade separation of the Ballarat line at Anderson Road was completed;
- track reconfiguration between the North Melbourne flyover and La Trobe Street;
- structural works on the North Melbourne rail flyover were completed;
- new bridge over the ARTC freight line near Footscray railway station was constructed;
- new signalling infrastructure and upgrades to train control systems between Footscray and Deer Park was installed;
- 266 tonnes of beams and trusses installed for the new Nicholson Street bridge were placed;
- 18,000 sleepers installed;
- 34,000 tonnes of ballast placed;
- 17 km new track laid; and
- 20 km signalling cable pulled.

The attached pictures illustrate the works:

1.3 Media releases

The Victorian Minister for Public Transport, Terry Mulder held a media event on 2 December 2013 to outline the works to be undertaken during the occupation and affirm the rail replacement services that would be available for commuters.

A further media event was held on 20 January to thank commuters for their patience and assistance during the occupation and the celebrate the opening of the Anderson Road grade separation with the Ballarat line.

The media releases are attached.

Major Occupation 27 December 2013 – 19 January 2014



Australian Government

www.regionalraillink.vic.gov.au





Track reconfiguration, West Melbourne



www.regionalrailink.vic.gov.au





Dudley Street bridge



Australian Government

www.regionalrailink.vic.gov.au





North Melbourne flyover



Australian Government

www.regionalraillink.vic.gov.au





New ticket office at Footscray railway station



Australian Government

www.regionalraillink.vic.gov.au





New platforms at Footscray railway station



Australian Government

www.regionalraillink.vic.gov.au





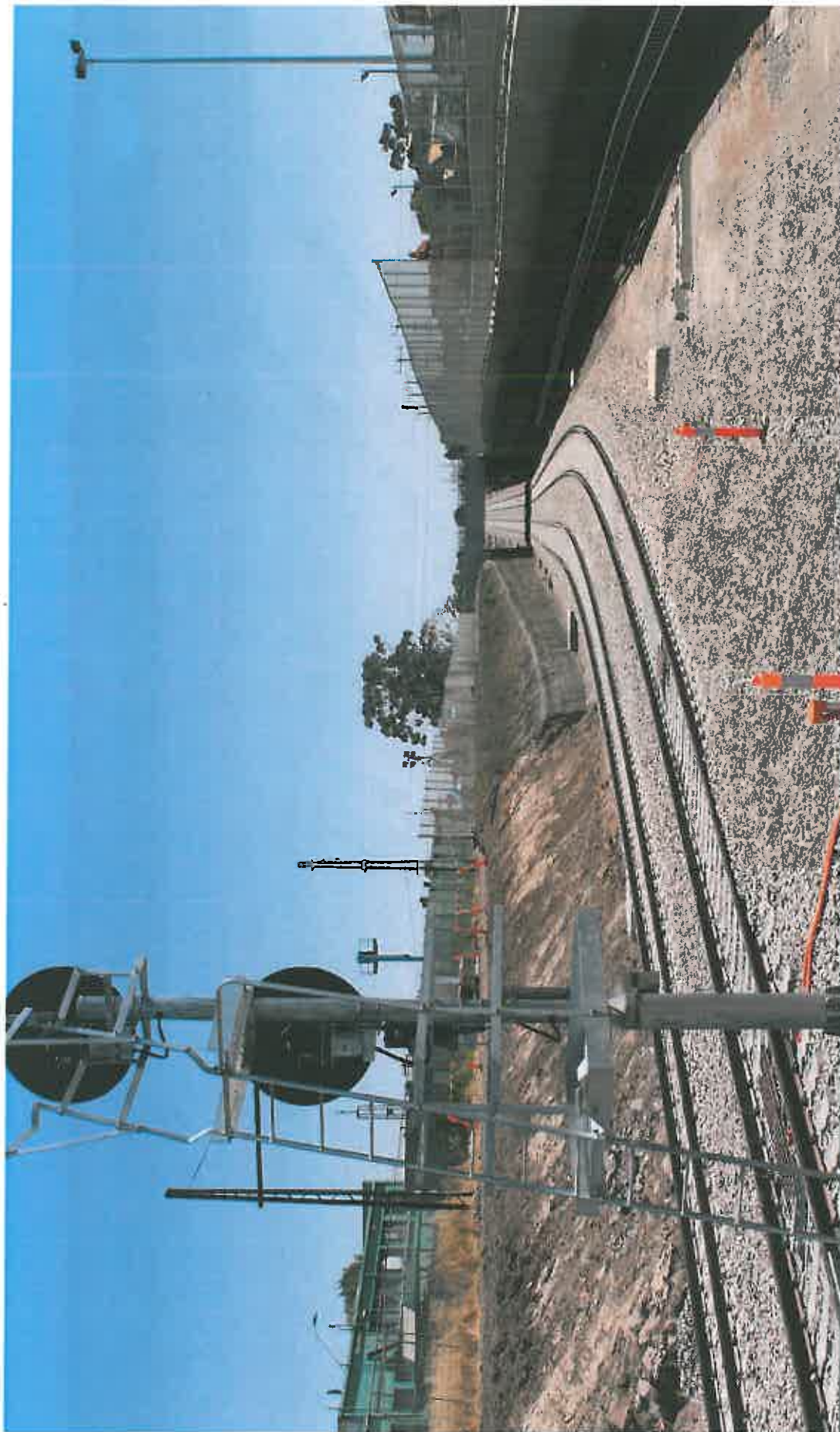
Installation of new bridge deck panels over the ARTC freight line



Australian Government

www.regionalraillink.vic.gov.au





Ballarat Line grade separation on Anderson Road, Sunshine



Australian Government

www.regionalraillink.vic.gov.au





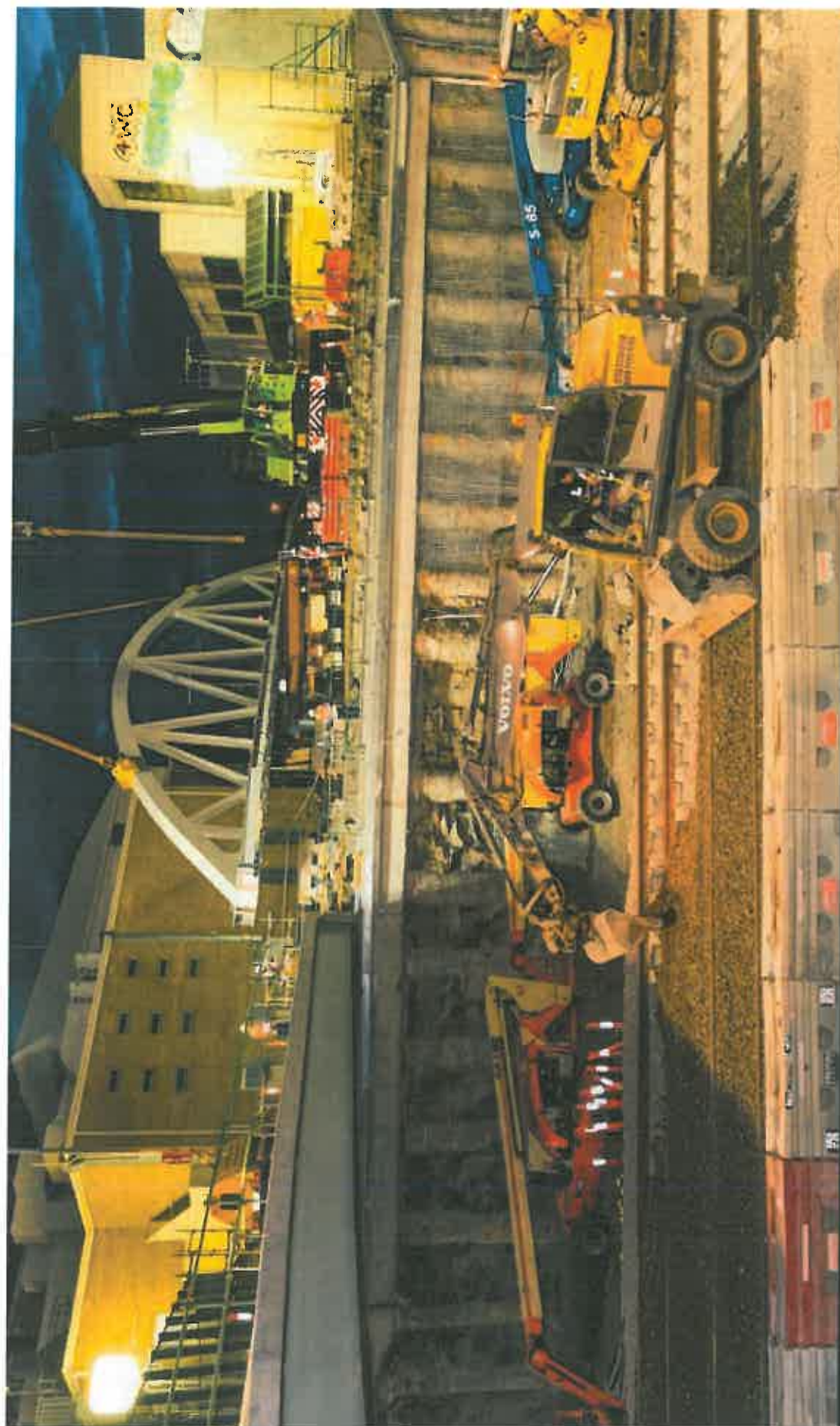
Nicholson Street bridge works



Australian Government

www.regionalraillink.vic.gov.au





Nicholson Street bridge works



Australian Government

www.regionalraillink.vic.gov.au





Artwork at West Footscray railway station



Australian Government

www.regionalraillink.vic.gov.au





New Sunshine railway station concourse



Australian Government

www.regionalraillink.vic.gov.au



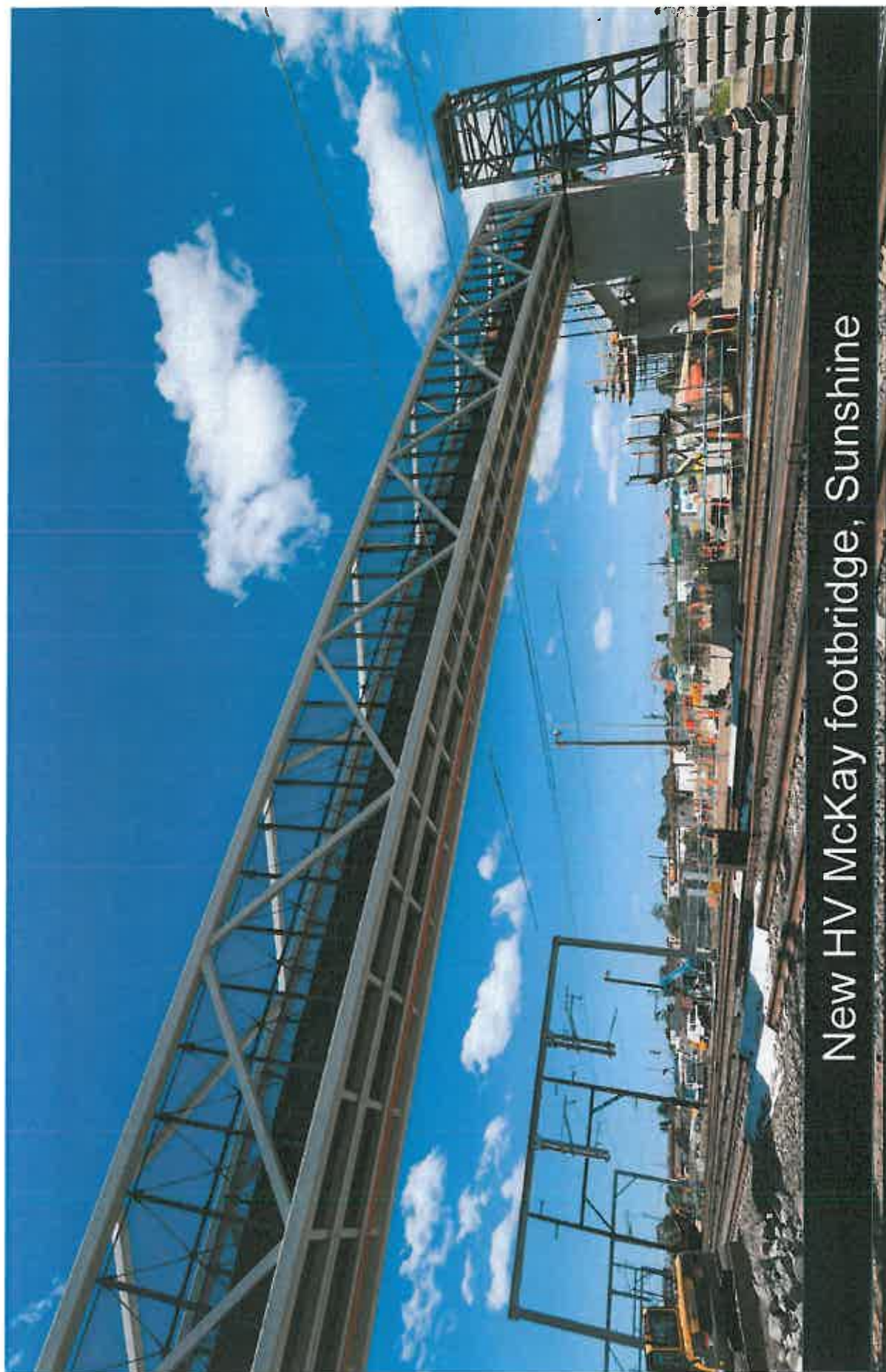


New HV McKay footbridge, Sunshine



www.regionalraillink.vic.gov.au





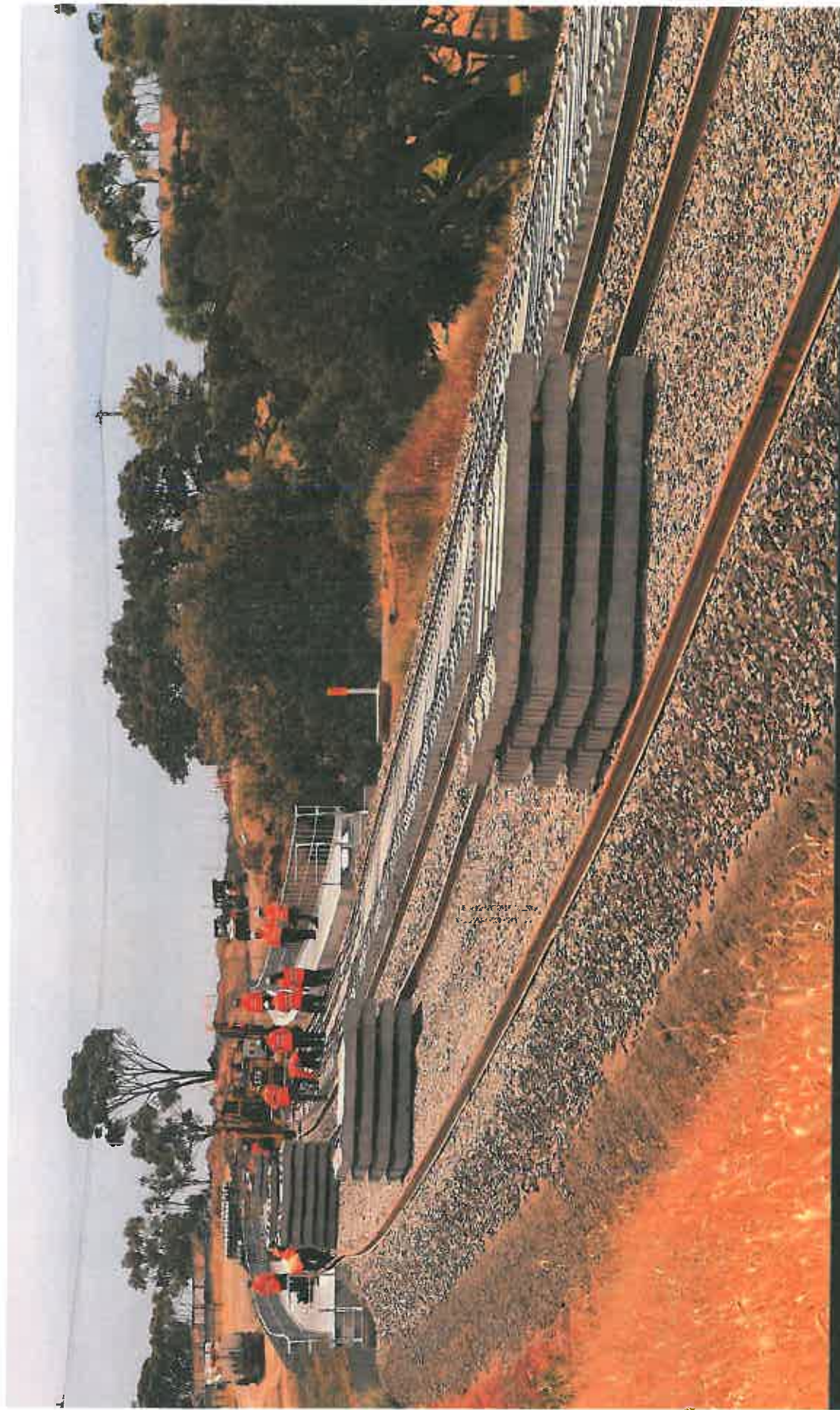
New HV McKay footbridge, Sunshine



Australian Government

www.regionalraillink.vic.gov.au





Track laying – material distribution



Australian Government

www.regionalraillink.vic.gov.au





Track laying – sleeper laying



Australian Government

www.regionalraillink.vic.gov.au





Track laying – sleeper laying



Australian Government

www.regionalrailink.vic.gov.au





Track laying – aligning sleepers



Australian Government



www.regionalrailink.vic.gov.au



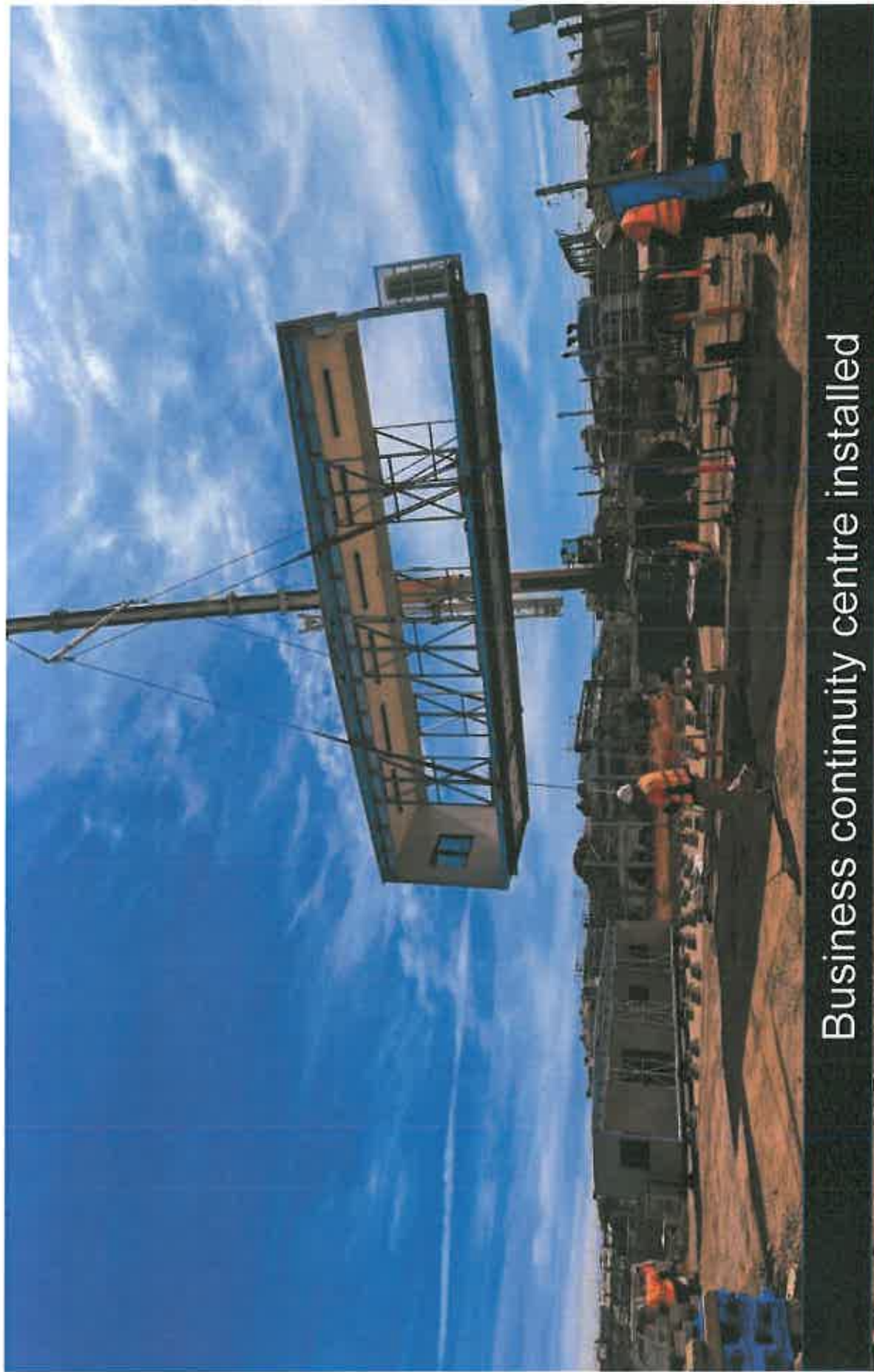
Track laying



Australian Government

www.regionalraillink.vic.gov.au





Business continuity centre installed



Australian Government

www.regionalrailink.vic.gov.au





Business continuity centre installed



Australian Government

www.regionalraillink.vic.gov.au





Power equipment room at Fraser Street



Australian Government

www.regionalraillink.vic.gov.au





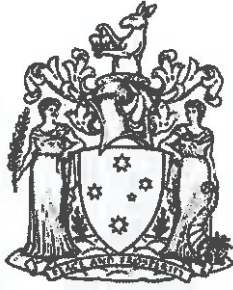
Power equipment room at Fraser Street



Australian Government

www.regionalrailink.vic.gov.au





Media release

The Hon Terry Mulder MP
Minister for Public Transport
Minister for Roads

Monday 2 December 2013

Summer works timetable announcement

- **First section of Regional Rail Link to open**
- **Construction blitzes during the quietest period on the network reducing the number of weekend closures**
- **Summer works will include the revamping of Footscray and Sunshine stations, the removal of the Anderson Road level crossing on the Ballarat line**
- **Opening of two new platforms at Southern Cross station on 22 December**
- **Geelong line trains will have a clear run into the station and won't have to wait behind metropolitan trains**

Progress on the state's biggest rail projects will take a major leap forward over summer, with the first section of Regional Rail Link to open, and construction blitzes during the quietest period on the network, Minister for Public Transport Terry Mulder announced today.

The \$4.8 billion Regional Rail Link project will reach a major milestone on 22 December with the opening of two new platforms at Southern Cross station and the project's first section of dedicated V/Line tracks.

Mr Mulder said the new tracks between South Kensington and Southern Cross removed the first of many bottlenecks that the project will fix, with Geelong passengers to be the first to see the benefits.

"Regular Geelong line passengers will no doubt have experienced frustrating delays on the approach to Southern Cross, waiting for metropolitan trains to pass before they have a clear path into the station," Mr Mulder said.

"The opening of these new tracks and platforms means that any Geelong line trains scheduled to arrive at platform 15 or 16 will have a clear run into the station and won't have to wait behind metropolitan trains."

The opening of the new track and platforms marks the completion of the project's first work package 'Southern Cross'.

"With Regional Rail Link on budget and ahead of schedule, passengers are going to progressively start seeing benefits well before the project's completion," Mr Mulder said.

"When Regional Rail Link is complete, Geelong line trains will have dedicated tracks all the way from Geelong to all platforms at Southern Cross."

.../2

Mr Mulder said that, following the opening of the new Regional Rail Link tracks between South Kensington and Southern Cross, a construction blitz from 28 December to 19 January will see the next stages of the project begin to take shape.

"Over late December and early January, public transport patronage reduces by up to a half, and doesn't return to normal levels until the end of February," Mr Mulder said.

"Completing works over this quieter period will help to minimise the effect on rail passengers while making significant progress in a short time. It reduces the number of weekend closures and ultimately means faster delivery of better rail services."

The summer works will include the revamping of Footscray and Sunshine stations, the removal of the Anderson Road level crossing on the Ballarat line, and the reconfiguration of the 'flyover' tracks leading into Southern Cross station platforms 1 to 8.

Mr Mulder said that January would also see major works on the Belgrave/Lilydale line, to continue the removal of the level crossings at Mitcham and Rooks Roads in Mitcham.

"By December, Mitcham station will be almost complete, with the finishing touches including handrails, paving work, telecommunications and signalling to be completed in January," Mr Mulder said.

From 3 to 24 January next year, the train tracks will shut down and trains will be replaced by buses between Ringwood and Blackburn. Motorists should be advised that Rooks Road will be closed for this period, however Mitcham Road will remain open to traffic.

"The level crossing will be removed from both Mitcham Road and Rooks Road during this time, and on 25 January the trains will run on the new tracks, with the new station in operation," Mr Mulder said.

The old Mitcham Station will be demolished in early February to make way for car parking.

Mr Mulder said that public transport timetable changes over December and January would accommodate the construction works and ensure Victorians can get where they need to go while work is underway.

"Although late December and January are the lowest patronage period on our rail network, we know that public transport is a key part of many people's summer, taking them to and from major events like the New Year's Eve fireworks, the tennis and the cricket."

During construction works, buses and coaches will ensure passengers can continue with their travel plans on sections of the Ballarat, Bendigo, Sunbury, Seymour, Albury, Shepparton and Belgrave/Lilydale train lines.

Metro will also run an amended timetable across most metropolitan lines from 22 December to 26 January to accommodate the construction works.

Mr Mulder said that detailed planning for the summer works timetables would ensure service levels cater for demand and that extra public transport services are provided where needed, beginning from this weekend.

"On the weekends leading up to Christmas, beginning this Friday night, when many people have parties to attend in the city, we will boost NightRider services to run every 15 minutes on the four busiest routes.

"On Christmas Day, public transport will be free across the state.

"On New Year's Eve, metropolitan trains, trams and NightRider will run all night and public transport across Victoria will be free from 6pm until the first normal scheduled service on New Year's Day. V/Line customers will also have free travel on the first V/Line service departing Melbourne on New Year's Day.

"Throughout summer, public transport will continue to be a good way to travel to major events such as the Boxing Day Test, the Australian Open, Big Bash cricket, horse racing and A League soccer, with special services designed to cater for the crowd numbers expected at each event, including frequent shuttle trams between the city and sporting precinct.

"I would like to thank those thousands of public transport employees who will work on Christmas Day, New Year's Eve, and throughout the summer, allowing Victorians to leave the car at home and enjoy celebrations with family and friends."

Mr Mulder encouraged passengers to plan ahead and check their timetable before travelling during December and January.

"Over summer there is a lot of work happening to transform the rail and road networks, but we are still open for business to get you where you need to go," Mr Mulder said.

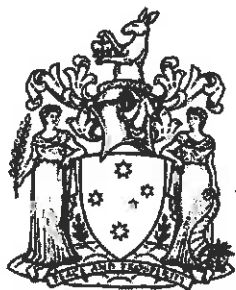
"With different timetables operating across much of the public transport network during December and January, I would encourage passengers to plan ahead and check their timetable before travelling."

Summer works timetables will be available in advance at www.ptv.vic.gov.au

Key train timetable changes during December and January include:

- Sunbury line, 28 December to 19 January: a combination of shuttle train services and replacement buses will operate.
- Ballarat / Bendigo lines, 28 December to 19 January: Coaches replacing all services.
- Shepparton line and Seymour lines: 28 December to 2 January: a mixture of coaches and trains will operate.
- Albury line, 28 December to 19 January: a mixture of coaches and trains will operate.
- Belgrave / Lilydale lines, 3 to 24 January: Buses replacing trains between Ringwood and Blackburn.
- Additional train and tram services for major events throughout December and January
 - Free travel state-wide on Christmas Day
 - All-night Metro trains, trams and NightRider on New Year's Eve
 - Free public transport on New Year's Eve, from 6pm until the first normal scheduled service on New Year's Day. V/Line customers will also have free travel on the first V/Line service departing Melbourne on New Year's Day.
- Amended Metro timetable across most lines from 22 December to 26 January.

Media contact: Larissa Garvin 0427 669 628 larissa.garvin@minstaff.vic.gov.au



Media release

The Hon Terry Mulder MP

Minister for Public Transport
Minister for Roads

Sunday 22 December 2013

Platforms 15 and 16 open at Southern Cross in Regional Rail Link milestone

A significant milestone was achieved for the Regional Rail Link project on Sunday 22 December 2014 with the opening of platforms 15 and 16 at Southern Cross for Bairnsdale, Geelong, and Traralgon line trains.

Alighting from the first Geelong train to arrive, Minister for Public Transport Terry Mulder said that the opening of the new dedicated V/Line tracks and platforms highlighted the extraordinary progress of the \$4.8 billion Regional Rail Link.

"Regional Rail Link (RRL) is on budget and ahead of schedule. Passengers will continue to gradually benefit well before RRL's completion," Mr Mulder said.

"Works at Werribee West Junction are now complete, meaning both ends of Melbourne's first lengthy new rail line, since the Altona Loop opened in 1985, are finished."

The new V/Line tracks are between Southern Cross and South Kensington. RRL will eventually provide V/Line tracks all the way to Werribee West, en route to Geelong and Warrnambool.

RRL Chief Executive Officer Corey Hannett said that RRL's first works package, 'Southern Cross' was now finished.

"The new tracks mean that V/Line's Geelong trains will no longer have to compete with Metro's suburban trains in from South Kensington," Mr Hannett said.

V/Line Chief Executive Theo Taifalos said there would be a new, altered timetable for Geelong line passengers.

"Removing the inner suburban bottleneck with dedicated tracks for country trains in and out of Southern Cross will mean increased train reliability," Mr Taifalos said.

Mr Taifalos said that Geelong line trains would no longer stop at North Melbourne, but would connect with Metro's trains at Footscray and Southern Cross.

"Most but not all Geelong trains will use platforms 15 or 16 at Southern Cross. Geelong line passengers should check their new timetable and passenger information displays before they travel," Mr Taifalos said.

Member for South Barwon Andrew Katos was delighted with the opening of the platform that will benefit Geelong passengers.

Mr Katos said that in addition to RRL, the Victorian Coalition Government had committed \$25.9 million to build a new V/Line station at Grovedale, providing easy access to the Surf Coast and Geelong's fast expanding southern suburbs.

"With Geelong set to become the headquarters of the NDIS, Geelong station will be upgraded to improve disability access," Mr Katos said.

"Safety will be boosted, with Geelong one of a number of provincial city stations to have PSOs patrolling from 6pm to the last train every night."

For timetables or to plan a journey, visit ptv.vic.gov.au or call 1800 800 007 (6am-midnight daily).

For more information about Regional Rail Link, visit www.regionalraillink.vic.gov.au or follow [@rrlproject](https://twitter.com/rrlproject) on twitter.

Media contact: Larissa Garvin 0427 669 628 larissa.garvin@minstaff.vic.gov.au



Media release

The Hon Dr Denis Naphthine MP
Premier
Minister for Regional Cities
Minister for Racing

The Hon Terry Mulder MP
Minister for Public Transport
Minister for Roads

Friday 27 December 2013

Huge Regional Rail Link works to continue over summer

An intense construction schedule is set to kick off on the Regional Rail Link project, with three weeks of around-the-clock works to take place between 28 December and 19 January.

Inspecting works at Footscray Station, Premier Denis Naphthine said Footscray was undergoing a profound transformation as a result of the \$4.8 billion project.

"Regional Rail Link is rejuvenating Footscray, bringing better infrastructure and train services to this diverse and vibrant community," Dr Naphthine said.

"Footscray is the epicentre of the summer construction program, which will see significant works undertaken throughout Melbourne's west.

"The revamp of Footscray and Sunshine stations will continue, as will work to remove two level crossings on Anderson Road in Sunshine.

"Reconfiguration of the 'flyover' tracks leading into Southern Cross station will also take place, as part of the untangling of Melbourne's rail network," Dr Naphthine said.

To enable these works to take place, coaches will replace trains from first service Saturday 28 December 2013 to last service Sunday 19 January 2014 on the Bendigo and Ballarat lines (although trains will still run between Ballarat and Ararat, and Ballarat and Maryborough). Buses will also replace the Sunbury line during this period.

V/Line services from Albury, Seymour and Shepparton and interstate services on the XPT from Sydney and the Overland from Adelaide will also be impacted for periods during this time between 28 December 2013 and 19 January 2014.

Minister for Public Transport Terry Mulder said carrying out these activities during the quieter holiday period reduced future disruption for rail passengers.

.../2

"Patronage drops around 50 per cent during the Christmas and New Year's break," Mr Mulder said.

"As a result, we're carrying out major works during the holiday period to improve Victoria's rail network, so passengers return to better rail services."

Passengers will still be able to get around on public transport using rail replacement buses, however, we recommend people allow extra time for their journey and plan their travel in advance.

For more information and to plan your journey contact Public Transport Victoria on 1800 800 007 or visit ptv.vic.gov.au.

Regional Rail Link Authority Chief Executive Officer, Corey Hannett, said the project has hit several milestones recently, and will continue to celebrate major milestones next year.

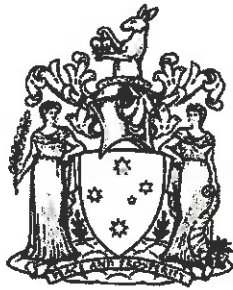
"Passengers are beginning to see the benefits of the Regional Rail Link project, with the opening of the new West Footscray station in October and the opening of platforms 15 and 16 at Southern Cross Station last weekend," Mr Hannett said.

"The works we are carrying out during these line closures lay the foundations of several more major milestones in 2014."

For more information about the project, visit www.regionalraillink.vic.gov.au.

Media contacts:

Mark Lee	0408 547 381	(Premier)
Larissa Garvin	0427 669 628	(Minister Mulder)



Media release

The Hon Dr Denis Naphthine MP
Premier
Minister for Regional Cities
Minister for Racing

The Hon David Hodgett MP
Acting Minister for Public Transport
Acting Minister for Roads
Minister for Ports
Minister for Major Projects
Minister for Manufacturing

Monday 20 January 2014

Sunshine level crossing removed during Regional Rail Link summer construction campaign

- **25,000 cars per day now have quicker and easier travel**
- **Victorian Coalition Government helping communities and planning for the future**

The biggest construction campaign on Regional Rail Link to date has culminated in the removal of a level crossing on Anderson Road in Sunshine with trains traveling through the intersection without disrupting traffic for the first time today.

Inspecting the new road-over-rail bridge today with Acting Minister for Public Transport David Hodgett, Premier Denis Naphthine said Regional Rail Link was already delivering benefits.

"Regional Rail Link is making our road and rail network safer and less congested," Dr Naphthine said.

"The more than 25,000 cars that use Anderson Road in Sunshine everyday will now have a smoother journey thanks to the project.

"Regional Rail Link is delivering real benefits now, making it quicker and easier for people to get around."

The removal of the Bendigo line level crossing a few hundred metres up Anderson Road near King Edward Avenue is due for completion in the middle of the year.

Acting Minister for Public Transport David Hodgett said the works at Anderson Road showed the incredible progress that was achieved during the rail line closures over the past three weeks.

"Temporary rail line closures such as the one just completed are critical to delivering major rail infrastructure like Regional Rail Link," Mr Hodgett said.

"While people were on replacement buses on some lines, more than 1,400 workers clocked up over 350,000 man hours installing 18,000 sleepers and over 17 kilometres of new track.

"We've also reached some critical milestones during the occupation, including the opening of two new platforms at Footscray Station, a new pedestrian concourse at Sunshine Station, the installation of an impressive new H.V. McKay footbridge and the new Nicholson St bridge in Footscray.

.../2

"We've also done extensive track reconfiguration work to make it easier for trains to get in and out of Southern Cross Station.

"This work simply can't happen while trains are running, which is why rail line closures like the one just completed are critical to improving Victoria's rail network.

"I would like to once again thank passengers for their patience, as we improve Victoria's rail network."

Member for Western Metropolitan region Andrew Elsbury said this is a major milestone, opening the Anderson Road grade separation, which shows a major vote of confidence by the Coalition Government in the people of Sunshine.

"Without these major roadworks Anderson Road would have been bogged down with congestion adding to frustrations to traffic reducing transport efficiency and the increased possibility of injury," Mr Elsbury said.

"These two level crossings have been eliminated as the Coalition Government reinstated them into the project to the benefit of the Sunshine community, after the previous Labor Government chose to scrap the grade separations."

Member for Western Metropolitan region Bernie Finn also welcomed the announcement.

"This bridge really does compliment what is an enormous project for the people of Melbourne's west who now have a safe and easy passage to the station, which when complete will be one of the best in the state," Mr Finn said.

Works carried out during the three week rail closure included:

- a new pedestrian concourse at Sunshine station (opened 2 January);
- new platforms 1 and 2 at Footscray station;
- demolition and installation of the new HV McKay footbridge in Sunshine;
- grade separation of the Ballarat line at Anderson Road;
- track reconfiguration between the North Melbourne flyover and La Trobe Street;
- structural works on the North Melbourne rail flyover;
- new bridge over the ARTC freight line near Footscray railway station;
- new signalling infrastructure and upgrades to train control systems between Footscray and Deer Park;
- 266 tonnes of beams and trusses installed for the new Nicholson Street bridge;
- 18,000 sleepers installed;
- 34,000 tonnes of ballast placed;
- 17 km new track laid; and
- 20 km signalling cable pulled.

For more information about the project, visit www.regionalraillink.vic.gov.au or follow [@rrlproject](https://twitter.com/rrlproject) on twitter.

Media contact:

Mark Lee 0408 547 381 mark.lee@minstaff.vic.gov.au

(Premier)

Steve Mann 0428 398 039 steve.mann@minstaff.vic.gov.au

(Minister Hodggett)

Cost Plan - Regional Rail Link

Side of the driver 147013

[illegible]

2014

★	Proposed payment will increase
★	Completed payment reductions

