



THE WESTERN PARKLAND CITY

A snapshot in time—2019

TRANSPORT CONNECTIVITY



397,000

Average number of jobs within 30 minutes (2016–2018)¹



16.9%

Dwellings within 400m of public transport (2018)²



13.8%

Public Transport

Average number of work trips by public and active transport (2016–2018)³

2%

Active Transport

DIGITAL CONNECTIVITY



11.5%

Workforce in knowledge intensive services (2017–2018)⁴



85.7%

Connected to broadband internet (2016)⁵

SKILLS AND EDUCATION



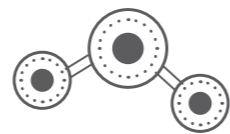
20.4%

Completed Tertiary Education, Bachelor or Higher (2016)⁶



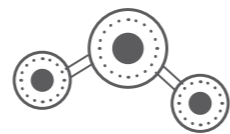
29.8%

Completed a Certificate 3, 4 or Diploma (2016)⁷



8.84%

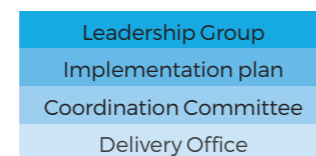
of Indigenous persons have completed Tertiary Education, Bachelor or Higher (2016)⁸



38.82%

of Indigenous persons have completed a Certificate 3, 4 or Diploma (2016)⁹

IMPLEMENTATION AND GOVERNANCE



Supported by all three levels of government



5 of 38

Commitments completed in the 12 months since the signing of the City Deal

JOBS FOR THE FUTURE



2.6%

Average employment growth rate (2018)¹



4.9%

Average unemployment rate (2018)²



515,000

Jobs in the Western Parkland City (2018)³



\$43,600

Gross Regional Product per capita (2016–2017)⁴



61.67%

Indigenous workforce participation rate (2016)⁵

565

Indigenous business owners (2016)⁶

PLANNING AND HOUSING



1.96%

Population growth rate of the Western Parkland City (2012–2017)⁷



13,134

Housing approvals for the Western Parkland City (2017–2018)⁸

LIVEABILITY AND ENVIRONMENT



48.2%

Dwellings with access to public open space within the Western Parkland City (2018)⁹



83.6 years

Life expectancy of a person in the Western Parkland City (2017)¹⁰



1,079,000

Population of the Western Parkland City (2017)¹¹



25,903

Indigenous population of the Western Parkland City (2016)¹²

1. The number of jobs in the city that can be reached by car in a commute of 30 minutes or less during the morning peak. This indicator represents a city-wide average – commute times in different parts of a city are weighted by population size for 2018 (National Cities Performance Framework (NCPF)).
2. The proportion of dwellings within 400 metres walking distance of a frequently or regularly serviced public transport stop – one with a scheduled service at least every 30 minutes from 7am to 7pm on a normal weekday in 2018 (NCPF).
3. Percentage of work trips by public and active transport in 2016 (NCPF).
4. Percentage employed in knowledge industries from August 2017 to August 2018 (NCPF).
5. The share of households in a city with an active broadband connection, defined as an access speed of 256 kilobits per second or faster in 2016 (NCPF).
6. The share of the population with a Bachelor degree or higher qualification from August 2016 (ABS Census).
7. The share of the population with a Certificate 3, 4 or Diploma from August 2016 (ABS Census).
8. The share of the population with a Bachelor degree or higher qualification from August 2016 (ABS Census).
9. The share of the Indigenous population with a Certificate 3, 4 or Diploma from August 2016 (ABS Census).

1. Average annual growth rate over previous 5 years to June 2018 (NCPF).
2. Average unemployment rate for previous 12 months to June 2018 (NCPF).
3. Current number of jobs in the region taken from June 2018 (NCPF).
4. Gross regional product measures the monetary value of all goods and services produced in the city from 2016–2017 (NCPF).
5. Percentage of Indigenous population in work or looking for work from 2016 (ABS Census).
6. Number of Indigenous persons who are the owner manager of a business from 2016 (ABS Census).
7. The average annual population growth rate of the city from June 2012 to 30 June 2018 (NCPF).
8. The number of housing approvals in the City Deal local government areas between 30 June 2017 to 30 June 2018 (Delivery Office and Local Governments).
9. The proportion of dwellings within 400 metres walking distance of public open space that is 1.5 hectares or greater within Western Sydney in 2018 (NCPF).
10. The number of years a person born today is expected to live, assuming current age-specific death rates are experienced throughout their lifetime in 2017 (NCPF).
11. Number of persons living in the Western Parkland City in 2017 (NCPF).
12. Number of Aboriginal, Torres Strait Islander persons living in the Western Parkland City in 2016 (ABS Census).