



Set up Microsoft Authenticator as an existing user

ROVER and RVCS & RAWS guide

October 2025

This guide will take you through the steps on how to set up Microsoft Authenticator as the multi-factor authentication method for your existing ROVER or RVCS & RAWS site account.

Please ensure you have downloaded the Microsoft Authenticator app on your device before you begin.

Recommended browsers: [Chrome](#), [Firefox](#) or [Microsoft Edge](#).

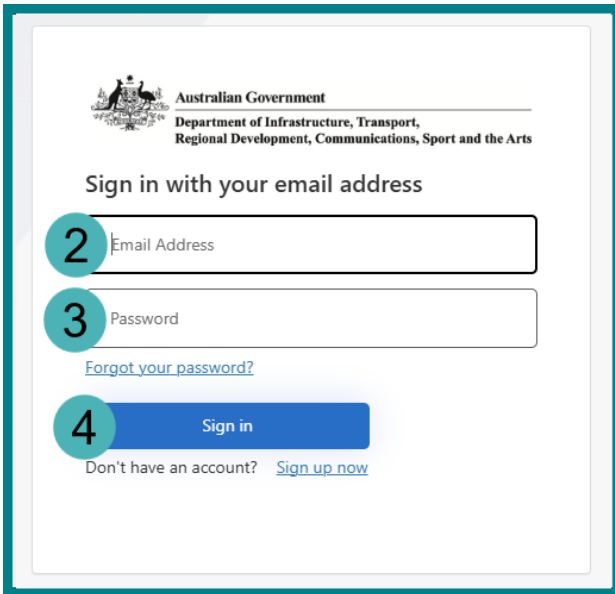
Set up Microsoft Authenticator

To **Set up Microsoft Authenticator**, complete the following steps.

1. Sign in to your existing account using one of the following methods:
 - a. Navigate to the [Welcome to ROVER](#) page and select the **Sign in** button.
 - b. Navigate to the [RVCS and RAWS Lookup](#) site, select the **Authorised participant login** and then select the **Login** button.

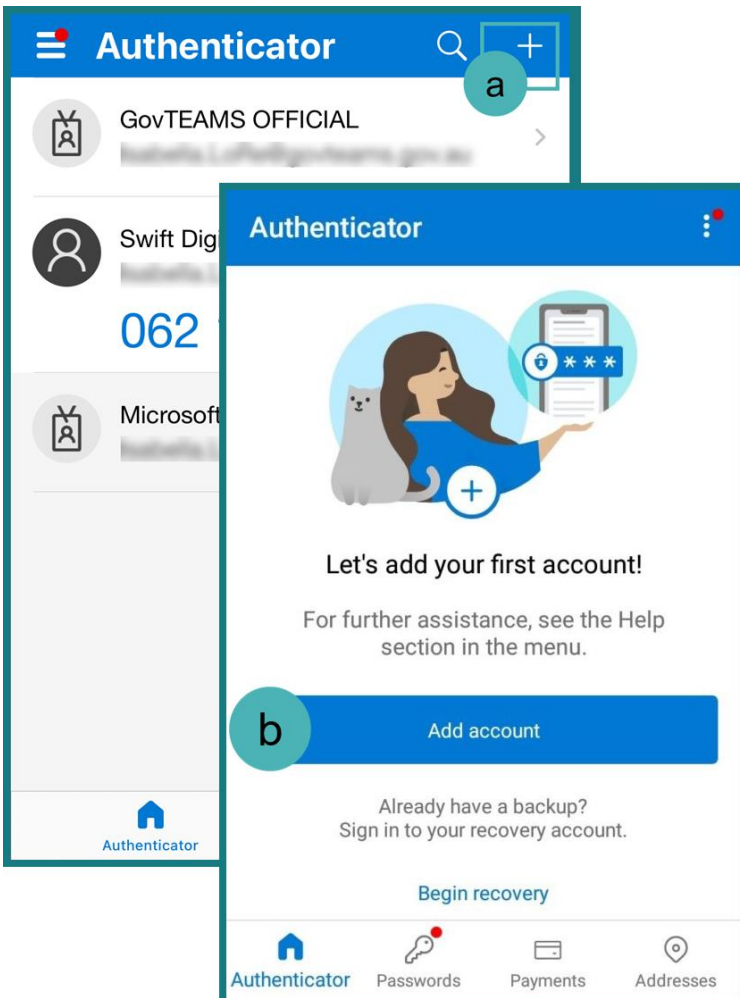
The screenshot shows two web pages side-by-side. The left page is 'Welcome to ROVER' and the right page is 'RVCS and RAWS Search'. On the ROVER page, a blue button labeled 'a' with a right-pointing arrow and the text 'Sign in' is highlighted. On the RVCS & RAWS Search page, a blue button labeled 'b' with the text 'Authorised participant login' is highlighted, and below it, another blue button with the text 'Login' is also highlighted.

2. Enter your **Email address**.
3. Enter your **Password**.
4. Select the **Sign in** button.



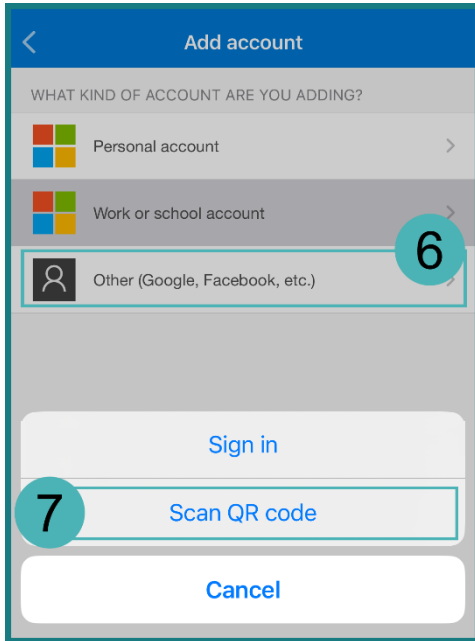
The screenshot shows the Australian Government sign-in page. At the top, it says 'Australian Government' and 'Department of Infrastructure, Transport, Regional Development, Communications, Sport and the Arts'. Below this, it says 'Sign in with your email address'. There are three numbered steps: 2. Email Address (input field), 3. Password (input field), and 4. Sign in (button). There is also a link for 'Forgot your password?' and a link for 'Don't have an account? Sign up now'.

5. Open the **Microsoft Authenticator** app on your device and add a new authentication using one of the following methods:
 - a. If you already have the app with other authentications, select the **plus** button
 - b. If not, select the **Add account** button.



6. Select **Other (Google, Facebook, etc.)**.

7. Select **Scan QR code** button.



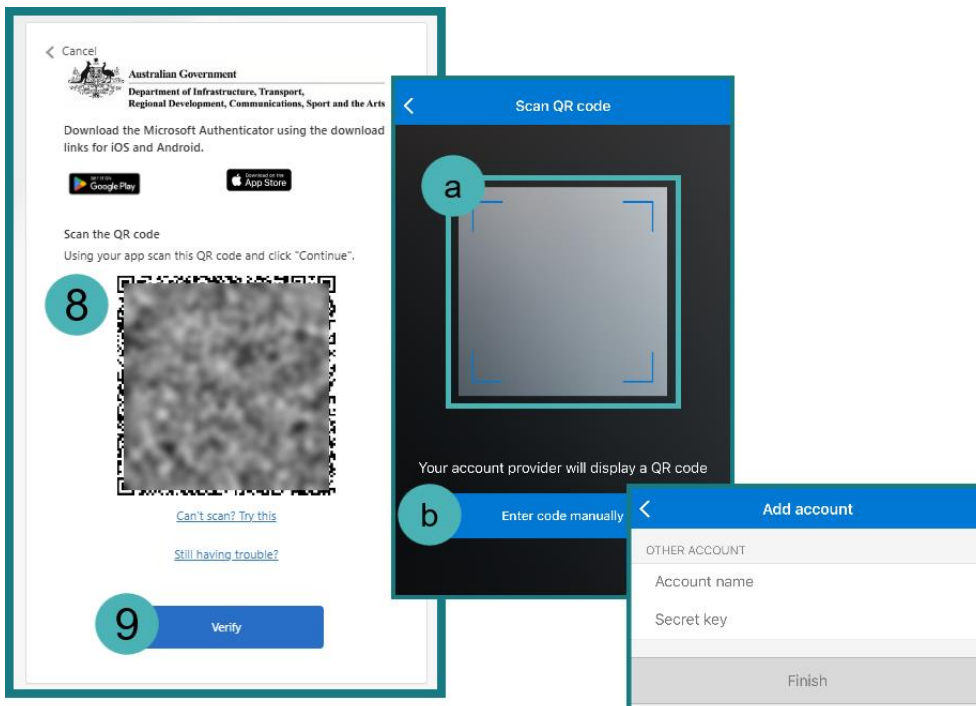
8. Add the **authentication** using one of the following methods:

- Scan the **QR code** using your device camera.
- Select the **Still having trouble?** link underneath the QR code to reveal an account name and secret key. Then, select the **Enter code manually** button in your app, enter **Account name** and **Secret Key** into the free text fields and select the **Finish** button.

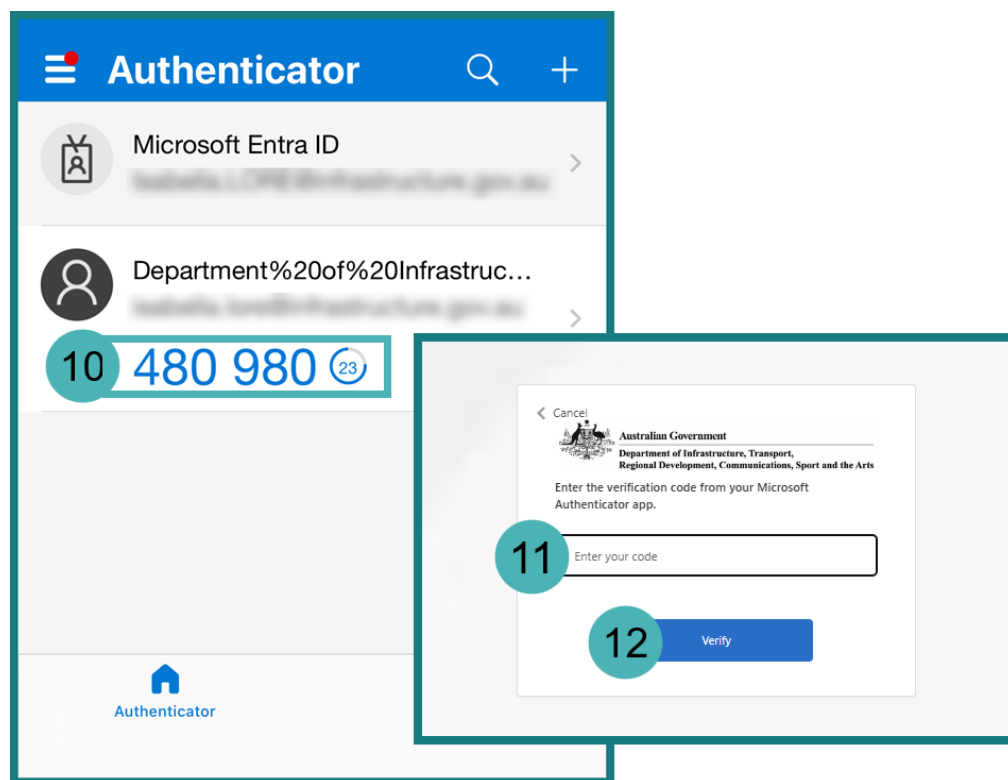


Your account will be added to the list of authenticators on the Microsoft Authenticator app homepage.

9. Select the **Verify** button in ROVER.



10. Select your **authenticator account** from the Microsoft Authenticator app on your device
11. **Enter the code** in the free text field on ROVER.
12. Select the **Verify** button.



Further information

For further information, please visit [Vehicles | Department's website](#) or submit an online enquiry via the [Contact us—RVS | Department's website](#) page.

Quick links

- [Welcome to ROVER](#)
- [RAWS RVCS Lookup](#)
- [RAV Public Search](#)
- [Road Vehicle Standards legislation | Department's website](#)
- [RVS guides and resources | Department's website](#)
- [RVS legislation glossary of terms | Department's website](#)