



## What is second stage of manufacture?

Second stage of manufacture (SSM) involves modifying or adding to a new vehicle (the base vehicle) to create an alternate vehicle. For example, adding an ambulance, motorhome or fire tender body to a new chassis cab.

SSM vehicles can be added to the [Register of Approved Vehicles](#) (RAV).

### SSM under vehicle type approval

SSM can be performed under a vehicle type approval if the criteria for obtaining a type approval are met. The [Guide to vehicle type approvals](#) provides more information about SSM type approvals.

RVSA type approval holders can modify base vehicles that are on the RAV and base vehicles fitted with a *Motor Vehicle Standards Act 1989* (MVSA) identification plate.

RVSA type approval holders are responsible for adding their vehicles to the RAV.

- Where the base vehicle is on the RAV, the RAV entry pathway sub-category will be **type approval – second stage of manufacture**.
- Where the base vehicle is not on the RAV, the RAV entry pathway sub-category will be **type approval – standard** or **type approval – non-standard**, as applicable.

Further information about adding a vehicle to the RAV using a type approval can be found in the guidance on the [RAV webpage](#) ([see Flowchart 1](#)).

### SSM by a RAW

SSM can also be performed by a [registered automotive workshop](#) (RAW). Under the RAW framework all modifications must be made in accordance with an approved [Model Report](#) and verified by an [authorised vehicle verifier](#) (AVV).

If the AVV is satisfied the vehicle's modifications were done in accordance with the Model Report they will enter it on the RAV ([see Flowchart 2](#)).

### SSM in the transitional period

SSM performed according to an approval granted under the MVSA can continue in accordance with the MVSA identification plate approval (IPA) until 30 June 2022.

**Please note:** MVSA approval holders cannot fit an identification plate to a base vehicle that has been added to the RAV.

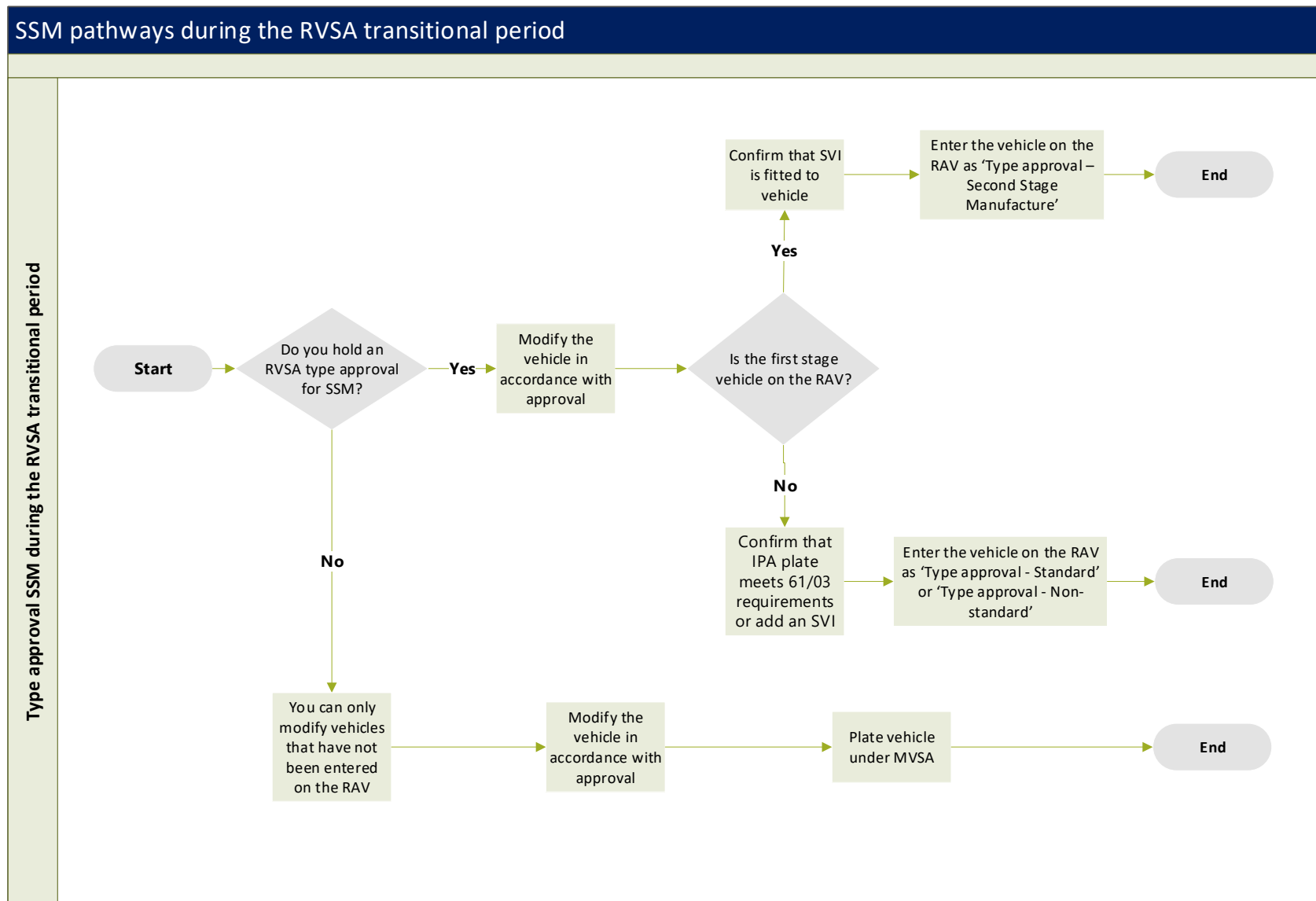
If an SSM is performed on a base vehicle that is on the RAV, the completed vehicle will also need to be added to the RAV.

To add a vehicle to the RAV the approval holder should apply through [ROVER](#) for a **concessional RAV entry approval – vehicle to be modified by a RAW**.

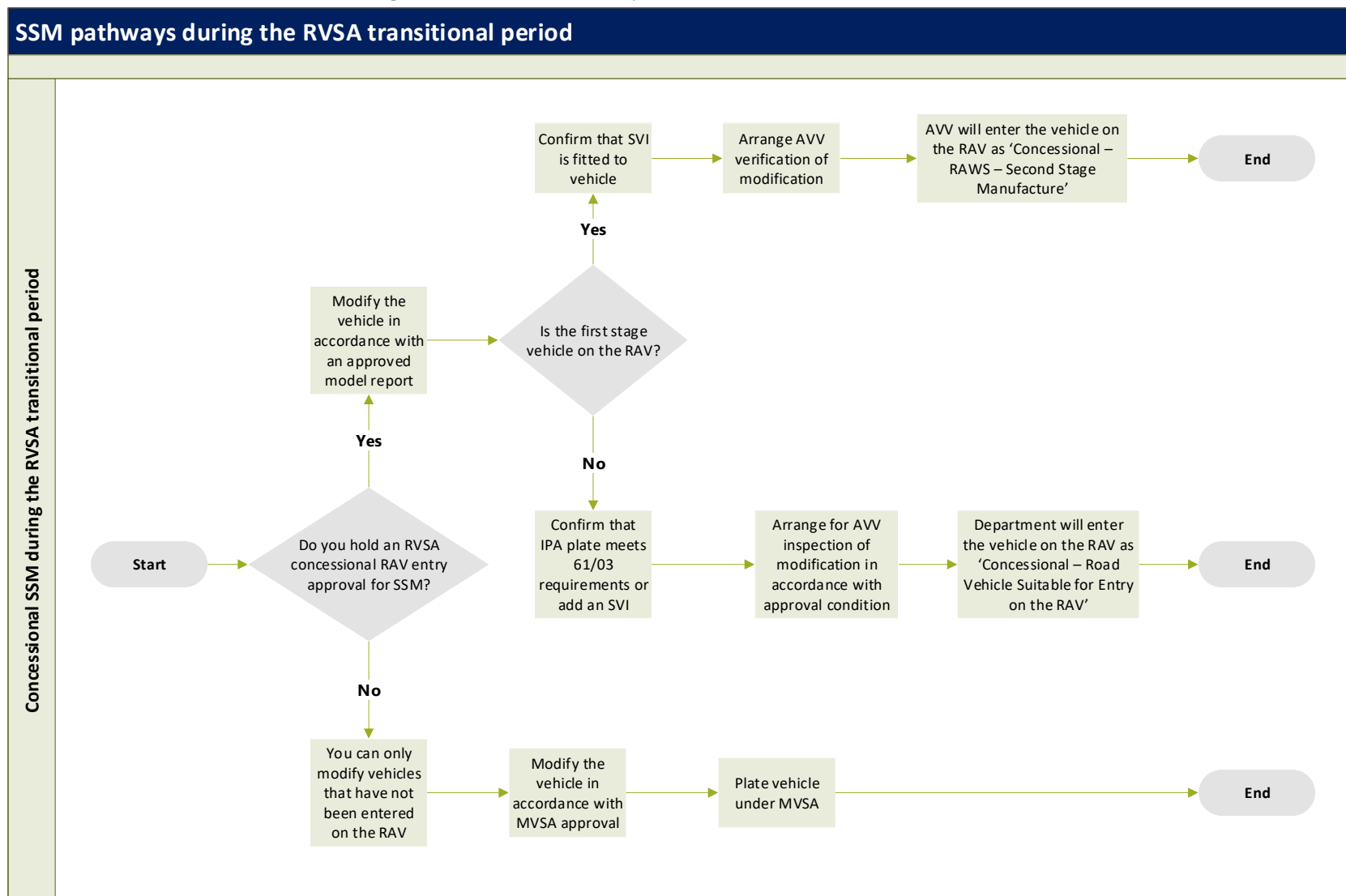
The application will be considered under section 41 of the Road Vehicle Standards Rules – **vehicle otherwise suitable for entry on the RAV** – on the basis they are being modified in accordance with an MVSA IPA ([see Flowchart 3](#)).

The flowcharts below set out what vehicles you may modify and how to make applications, depending on the approval type you hold.

Flowchart 1. Type approval SSM during the RVSA transitional period



Flowchart 2. Concessional SSM during the RVSA transitional period



Flowchart 3. MVSA identification plate approval SSM during the RVSA transitional period

