

# A guide to POTENTIAL INVASIVE MARINE SPECIES ARRIVALS AT NORFOLK ISLAND

Norfolk Marine Park is free from high priority Invasive Marine Species (IMS). To help keep it this way, one of the key parts of an effective marine bio-security management program is to have active surveillance. Members of the Norfolk Island community are often in the water, and are best placed to alert us to the presence of anything new or unusual.

PLEASE KEEP AN EYE OUT FOR THE FOLLOWING IMS WHICH HAVE THE GREATEST CHANCE OF SURVIVAL IF THEY WERE TO ARRIVE AROUND THE ISLAND



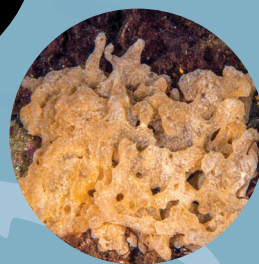
Japanese seaweed  
*Undaria pinnatifida*



New Zealand screwshell  
*Maoricolpus roseus*



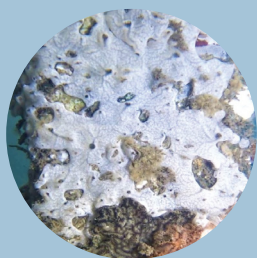
New Zealand  
Greenshell Mussel  
*Perna canaliculus*



Carpet sea squirt  
*Didemnum vexillum*



Asian paddle crab  
*Charybdis japonica*



Invasive sea squirt  
*Didemnum perlucidum*



Pacific Oyster  
*Magallana gigas*

## WHAT TO DO IF I SUSPECT I HAVE SEEN THEM?

Wherever possible, take high quality photos of the suspected species without disturbing it in its natural environment. Where safe to do so, collect the specimen/s and photograph them out of the water and note the precise location, number of individuals, and size. Place the specimens in a container with seawater and then notify [NorfolkMarinePark@dcceew.gov.au](mailto:NorfolkMarinePark@dcceew.gov.au)

## FURTHER INFORMATION OF IMS CAN BE FOUND AT:

<https://www.marinepests.gov.au/pests/identify>

<https://www.dpi.nsw.gov.au/fishing/aquatic-biosecurity/pests-diseases/marine-pests>



Australian Government



BIOFOULING  
SOLUTIONS