



Construction Expert Working Group Project Brief

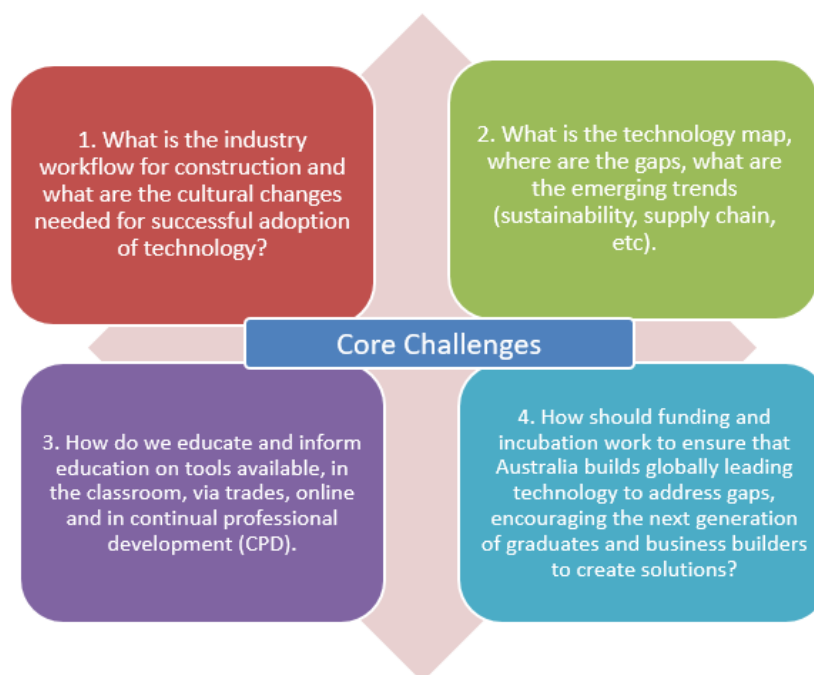
The Australian Broadband Advisory Council (the Council) is advising the Australian Government about ways in which digital and broadband communications infrastructure can be used to lift the construction sector's economic output, particularly for SMEs and regional areas.

The Construction Expert Working Group (CEWG) will support the Council in developing this advice by helping to identify barriers to further take-up of digital technologies, such as digital skills and training.

To assist with its work, EY was engaged to provide a scoping study that builds off the 2017 Digital Foundations – How Technology is Transforming Australia's Construction Sector. The EY scoping study examines the current construction landscape, examines the progress of the 2017 recommendations and puts forward some hypotheses for testing by the CEWG.

Purpose Statement

Supporting the accelerated adoption of connectivity-enabled technologies across the construction sector, with a focus on regions and SMEs, in order to drive productivity growth and other economic and social benefits. The following diagram illustrates the CEWG's early thoughts on how to frame its work:



Priority areas of focus

With companies across the sector at different stages of the digital maturity curve, a strong focus of the CEWG will be to consider how to support take up of ConstructionTech (i.e. take up and use of digital connectivity and technology) across the supply chain, including by SMEs and sub-contractors, and in regional areas, and across different segments.

The CEWG will also focus on:

- how the economic and social benefits of this connectivity can be maximised across the sector
- sector dynamics that influence the digitalisation of the Australian construction sector, including current state and territory government initiatives and strategies
- the current types and status of ConstructionTech and benefits of transitioning to digital for different industry segments
- digital skills and training and connectivity as both barriers and opportunities to drive further uptake of ConstructionTech
- key national ConstructionTech including the ConstructionTech start up sector in Australia relative to comparable countries in the OECD
- barriers and opportunities for the adoption of ConstructionTech in Australia, and how these can best be addressed/realised.

The CEWG is aiming to report to ABAC in early 2022, providing them with a number of considered strategies that will address the barriers to the adoption of construction tech at a sub-sector level.

Consultation

The CEWG intends to do a range of consultation activities including undertaking an industry survey. Further to this they will hold targeted meetings with relevant industry and government stakeholders and leverage the outreach of CEWG members.

Convener

The convener of the CEWG is Mr Craig Laslett, Managing Director at Leed Engineering and Construction Pty Ltd. Mr Laslett is a civil engineer with an extensive background in the design, construction, operation and maintenance of significant public and private infrastructure assets. He has led a number of complex and diversified businesses spanning transport infrastructure, mining and resources, building and industrial sectors, including as the Managing Director of Leighton Contractors and CEO of Lendlease Engineering.

Members

Name	Position
Matthew Browne	Managing Partner, Black Nova Group
David Murray	Chief Executive Officer, Buildxact
Jon Davies	Chief Executive Officer, Australian Constructors Association
Rebecca Halliday	Director - Indigenous Services Group, Deloitte
Gareth O'Reilly	Zone President Pacific - General Management, Schneider Electric
Duncan Bryce	Head of Builders Solutions, Bunnings
Shane Graham	Executive General Manager, Humes Australia
Luke Belfield	Associate Victorian Chief Engineer, Office of Projects Victoria
Vlatka Varagic	Manager GIS ANZ, SMEC
Peter Colacino	Chief of Policy and Research, Infrastructure Australia