



# COVID-19 Newsletter



Jervis Bay Territory Community | Issue no. 29 | 27 August 2021

## Quarantine requirements for returning JBT residents

To help protect the JBT community from the spread of COVID-19, if you go anywhere in NSW outside the Shoalhaven LGA, when you come home you must quarantine at your home (or another suitable location) for 14 days.

**Remember: quarantine is more strict than lockdown.**

While in quarantine, you cannot leave your home unless:

- There is an emergency situation
- You are seeking medical care, including receiving your COVID-19 vaccination
- You need to leave to comply with a legal obligation
- You are leaving the JBT by a direct route.

**If anyone in your house is in quarantine, you cannot have any visitors to your home, including family, unless they usually live with you.**

You should also keep an eye out for any COVID-19 symptoms such as a fever, cough, sore throat and shortness of breath. If you feel unwell with any of these symptoms please get a COVID-19 test and seek immediate medical advice.

To stay up to date with all the latest Public Health Directions you can scan the below QR code:



## Lockdown extended until 10 September

To protect residents from the ongoing COVID-19 outbreak, the Jervis Bay Territory (JBT) lockdown is being extended until 10 September, in line with the stay-at-home orders which now apply to all people who live in regional New South Wales (NSW).

The stay-at-home orders for the JBT will continue until the NSW Government lifts the lockdown on the Shoalhaven local government area (LGA).

Under the stay-at-home orders, JBT residents are reminded that they must not leave their home without a reasonable excuse, which only includes:

- Shopping for essential household items
- Medical care and caregiving, including receiving your COVID-19 vaccination
- Outdoor exercise with members of your household or one other person
- Work if working from home is not possible and the business is allowed to open.

Travel between the JBT and the Shoalhaven remains allowed, but only if you have a reasonable excuse for leaving home.

This lockdown is important to stop COVID spreading in our community. Please stay home unless you have to leave. This is the best way to keep your loved ones safe and making the lockdown as short as possible.

## Vaccine roll-out for the Jervis Bay Territory

To help keep the JBT protected from serious illness caused by COVID-19, the Pfizer vaccine will be made available for all JBT residents from the age of 12 in recognition of our small and vulnerable population in its regional location.

The Royal Flying Doctor Service will be in JBT from Monday 30 August to start delivering the COVID vaccines, with all eligible JBT residents urged to roll up their sleeves to get vaccinated against COVID-19. It's our best protection. Second dose of Pfizer will commence 20 September.

Appointments will be coordinated through George Brown at Wreck Bay Aboriginal Community Council for Wreck Bay residents and the JBTA for all other residents in the community.

Please see the following dates and times for **Stage 1 of the JBT COVID-19 Vaccination roll out:**

Monday 30 <sup>th</sup> August 2021	Wreck Bay Clinic
Tuesday 31 <sup>st</sup> August 2021	Wreck Bay Clinic
Wednesday 1 <sup>st</sup> September 2021	Wreck Bay Clinic (morning) Jervis Bay Clinic (1pm onwards)
Thursday 2 <sup>nd</sup> September 2021	Jervis Bay Clinic
Friday 3 <sup>rd</sup> September 2021	Jervis Bay Clinic



## National Park Update

Due to the evolving COVID-19 situation in NSW, Booderee National Park is postponing all camping bookings for the 2021-22 summer school holidays until further notice.

This includes the August camping ballot, which has also been postponed. The park will revise this decision as the COVID-19 situation develops and inform their newsletter subscribers when bookings become available.

During the current lockdown in regional NSW, only Jervis Bay Territory residents and essential workers will be allowed to enter Booderee National Park.

Visitors with pre-booked park passes from Sunday, 15 August 2021 can request a refund online or alternatively by emailing [Booderee.mail@awe.gov.au](mailto:Booderee.mail@awe.gov.au). For any enquiries about Booderee National Park, please contact 02 6274 2432 or [Booderee.mail@awe.gov.au](mailto:Booderee.mail@awe.gov.au).

For community bulletins and directions affecting the Jervis Bay Territory visit [https://www.regional.gov.au/territories/jervis\\_bay/community/bulletins/bulletins-2021/](https://www.regional.gov.au/territories/jervis_bay/community/bulletins/bulletins-2021/).

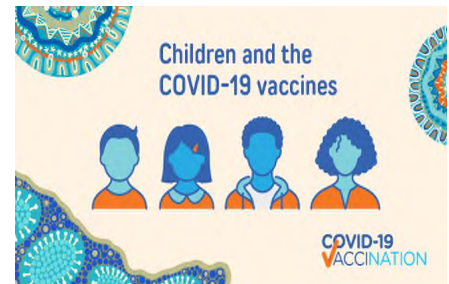


## Children 12 years and over can now also get their COVID-19 vaccine

Aboriginal and Torres Strait Island children, and all children in remote communities, aged 12-15 years can now receive a Pfizer COVID-19 vaccine.

Studies from around the world are showing that the Pfizer vaccine is very good at keeping children aged 12-15 years from getting sick from COVID-19.

Read ATAGI's statement on approving the Pfizer COVID-19 vaccine for children aged 12 – 15 years, or have a yarn with your local healthcare worker about what's right for you.



## Adam Goodes on why you should get vaccinated:

"I think it's very important that all of us here in Australia should get vaccinated to protect our family and friends. To my Aboriginal and Torres Strait Islander brothers and sisters, it's just as important for us to know the risks of COVID-19 but more importantly the benefits of being vaccinated and the benefits to our mob and all of us going out there and getting that jab."



## JBTA Office update:

The Jervis Bay Territory Administration (JBTA) Office, including Access Canberra functions, will be temporarily closed while the territory remains in lockdown, currently until 10 September 2021.

Most Access Canberra transactions can be completed online by visiting [www.accesscanberra.act.gov.au](http://www.accesscanberra.act.gov.au) or calling 13 22 81 (but please note, there may currently be long wait times for calls).

If you require any assistance, please contact the JBTA Office on (02) 4442 2200 between 9am – 1pm Monday to Friday.

We apologise for any temporary inconvenience this may cause.

Need medical help?	
<b>Wreck Bay community health clinic</b> Telehealth appointments available	Mondays and Thursdays 9:40am–3:00pm (02) 4448 0200 or 1800 215 099
<b>COVID-19 Assessment Clinic</b> Shoalhaven Hospital	8:30am-4.30pm 7 days a week 1300 002 108