



Australian Government

Department of Infrastructure, Transport,
Regional Development, Communications, Sport and the Arts



Community Bulletin

JERVIS BAY TERRITORY

Number: 2025/23

Date: 26 September 2025

Relevant: Jervis Bay Territory residents

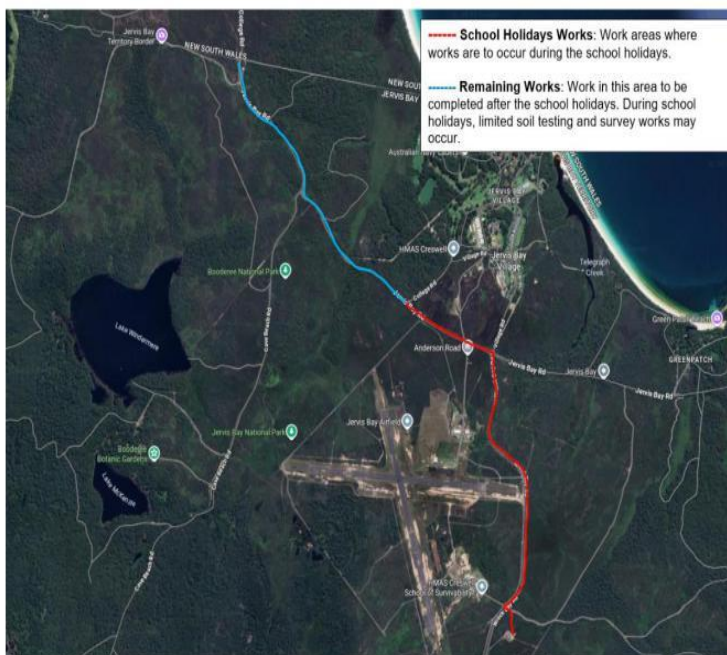
Topic: Water pipeline construction update

Water Pipeline Construction Update

Construction of the water pipeline connecting Jervis Bay Territory to Shoalhaven is progressing ahead of schedule, with construction works advancing faster than anticipated.

Quickway have advised that, to continue this critical project and avoid delays, construction will continue throughout the school holiday period.

To minimise disruptions to residents and tourists, the focus of the works during the school holiday period will be along Wreck Bay Road with some works on Jervis Bay Road between the Wreck Bay Road intersection and College Road. Along Jervis Bay Road, one lane of traffic in both directions – with minimal traffic control – will be maintained throughout the period (please refer to map for reference).



We are committed to minimising disruptions to traffic as much as possible during this time, and appreciate the community's ongoing patience and understanding during this important construction phase.

Quickway will be monitoring traffic control to ease congestion or impacts where practical.

Further updates will be shared as more information becomes available.

For more information, or questions or concerns, contact the Jervis Bay Territory Office on 6136 9000, weekdays between 9am-4.30pm.