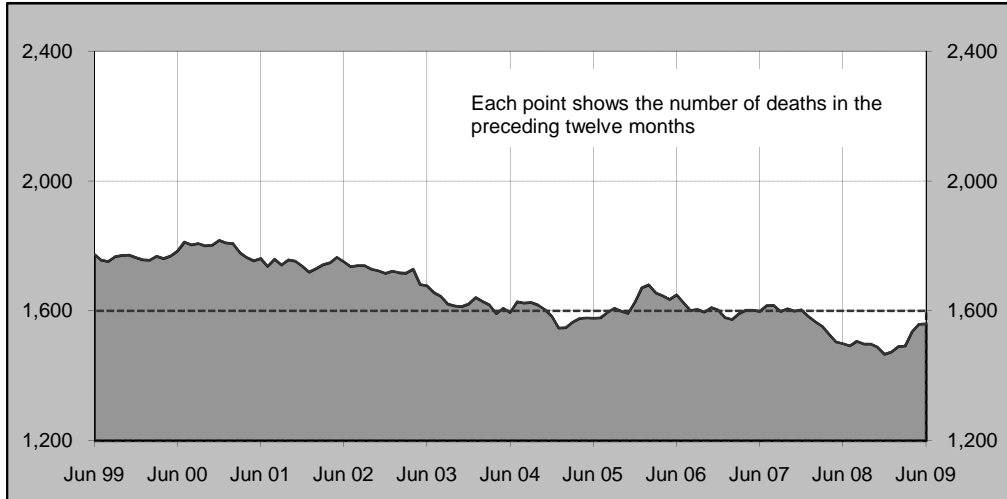




**Australian road deaths for 12 months to date — last 10 years**



**Inquiries**

For further information about data in this bulletin, contact:

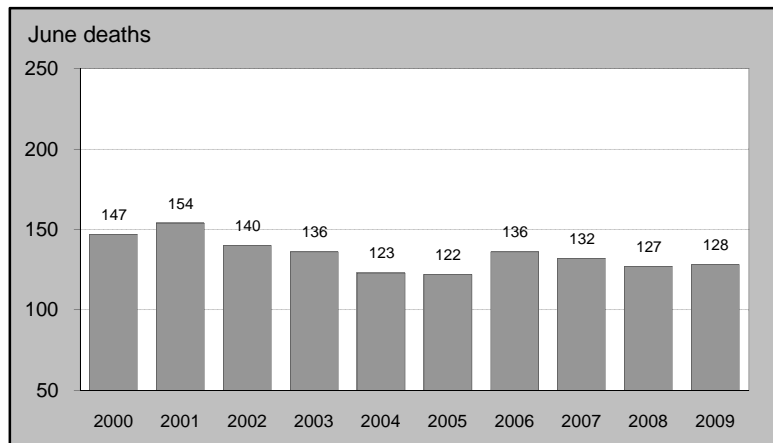
Road Safety Policy  
 Department of Infrastructure, Transport,  
 Regional Development and Local Government  
 GPO Box 594,  
 Canberra, ACT 2601  
 Email: [roadsafety@infrastructure.gov.au](mailto:roadsafety@infrastructure.gov.au)  
 Internet: [www.infrastructure.gov.au](http://www.infrastructure.gov.au)

**Data Sources**

The data presented here are obtained from the following sources:

- Roads and Traffic Authority, NSW
  - Vicroads
  - Queensland Transport
  - Department for Transport, Energy and Infrastructure, South Australia
  - Western Australia Police
  - Department of Infrastructure, Energy and Resources, Tasmania
  - Department of Planning and Infrastructure, Northern Territory
  - Territory and Municipal Services, ACT
- Road deaths from recent months are preliminary and subject to revision.

**Australian road deaths for June — last 10 years**



**This month's key figures**

There was a total of 128 road deaths in June 2009.  
 - this is a 0.8 per cent increase over the June 2008 figure.

There have been 793 road deaths in 2009 to the end of June.  
 - this is a 13.4 per cent increase over the same 6 month period in 2008.

# NUMBER OF ROAD CRASH DEATHS IN EACH STATE / TERRITORY

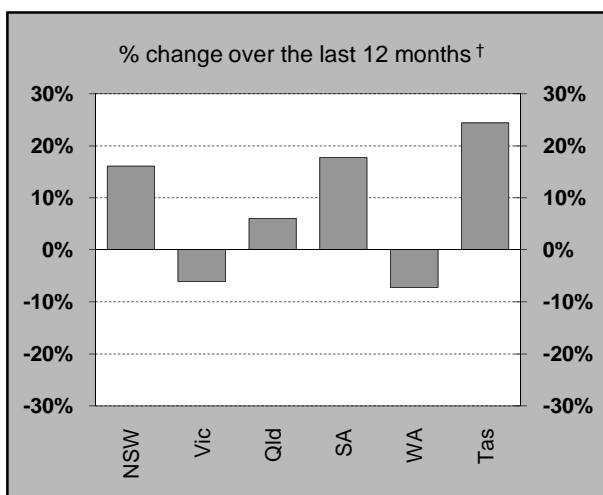
## Road deaths by State/Territory

for current month, year to date, 12 months ended June, and five year trend

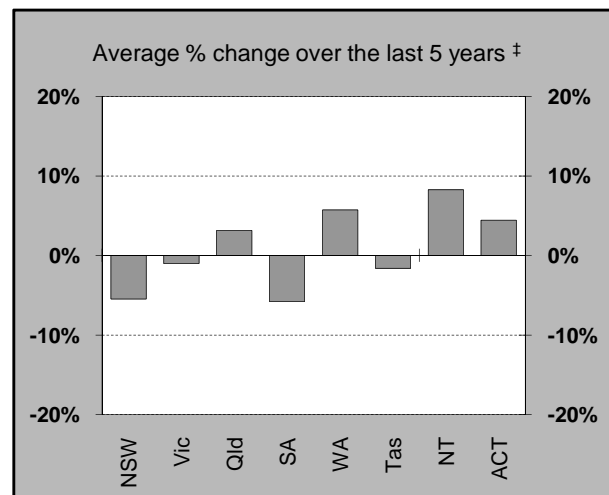
	NSW	Vic	Qld	SA	WA	Tas	NT	ACT	Australia
<b>Current month</b>									
Jun 2009	31	32	33	8	15	3	4	2	128
Jun 2008	33	20	31	6	22	5	7	3	127
% change	-6.1	60.0	6.5	33.3	-31.8	-40.0	-42.9	-33.3	0.8
<b>Year to date</b>									
Jan 2009 - Jun 2009	226	162	181	68	98	38	13	7	793
Jan 2008 - Jun 2008	176	155	158	41	102	27	32	8	699
% change	28.4	4.5	14.6	65.9	-3.9	40.7	-59.4	-12.5	13.4
<b>12-months to date</b>									
Jul 2008 - Jun 2009	448	310	351	126	205	51	56	13	1,560
Jul 2007 - Jun 2008	386	330	331	107	221	41	69	14	1,499
Difference	62	-20	20	19	-16	10	-13	-1	61
% change	16.1	-6.1	6.0	17.8	-7.2	24.4	-18.8	-7.1	4.1
<b>Average annual % change over 5 years<sup>a</sup></b>									
YE June 2004 to YE June 2009	-5.5	-1.0	3.1	-5.8	5.7	-1.6	8.2	4.4	-0.8

<sup>a</sup> Average annual percentage change based on the exponential trend for the last five 12-month periods

## Percentage change in deaths in each State



† Percentage change between the two 12-month periods ending June 2009 and June 2008. NT and ACT not shown.



‡ Average annual percentage change based on the exponential trend from the year ending June 2004 to year ending June 2009.

# NUMBER OF DEATHS IN EACH ROAD USER GROUP

## Road deaths by road user group and gender

for 12 months ended June 2009, June 2008 and five year trend

	Drivers	Passengers	Pedestrians	Motor-cyclists <sup>a</sup>	Cyclists	All road users <sup>b</sup>
<b>Males</b>						
Jul 2008 - Jun 2009	522	183	150	238	28	1,123
Jul 2007 - Jun 2008	572	165	128	212	26	1,103
% change	-8.7	10.9	17.2	12.3	7.7	1.8
<b>Females</b>						
Jul 2008 - Jun 2009	197	151	64	14	6	432
Jul 2007 - Jun 2008	162	141	67	22	2	394
% change	21.6	7.1	-4.5	-36.4	200.0	9.6
<b>Persons<sup>c</sup></b>						
Jul 2008 - Jun 2009	721	337	214	252	34	1,560
Jul 2007 - Jun 2008	735	307	195	234	28	1,499
% change	-1.9	9.8	9.7	7.7	21.4	4.1
<b>Average annual % change over 5 years<sup>d</sup></b>						
YE June 2004 to YE June 2009	-0.7	-2.9	-2.6	4.8	-3.4	-0.8

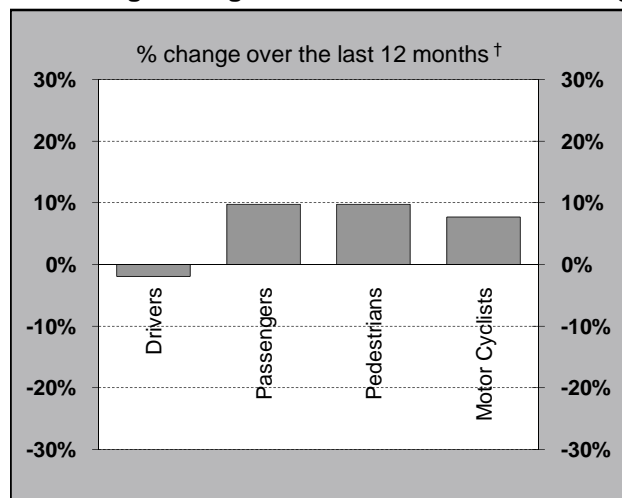
a Includes pillion passengers

b Includes road users not separately specified

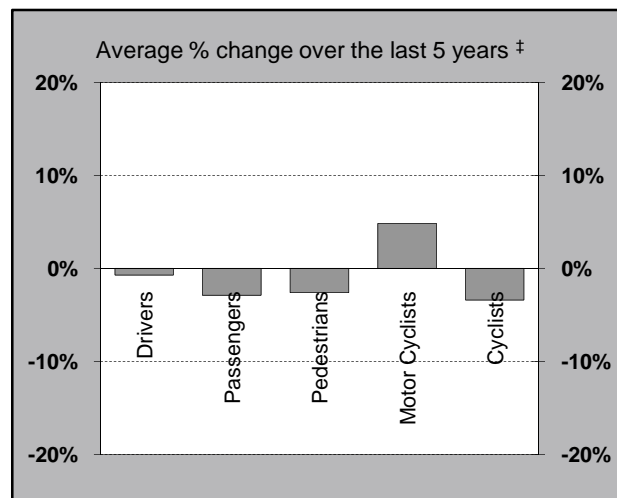
c Includes road users with unstated gender

d Average annual percentage change based on the exponential trend for the last five 12-month periods

## Percentage change in deaths in each road user group



† Percentage change between the two 12-month periods ending June 2009 and June 2008. Cyclists not shown.

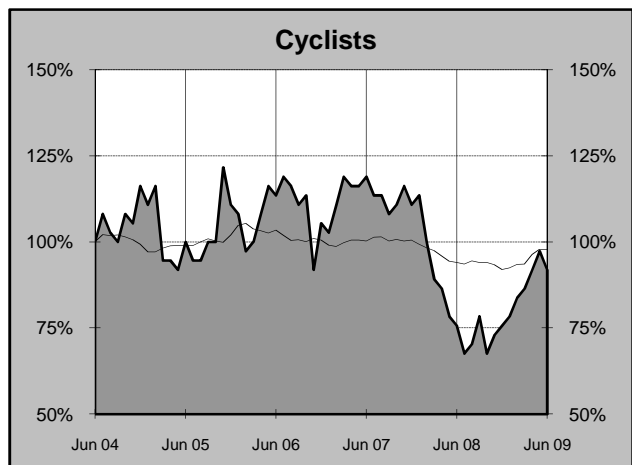
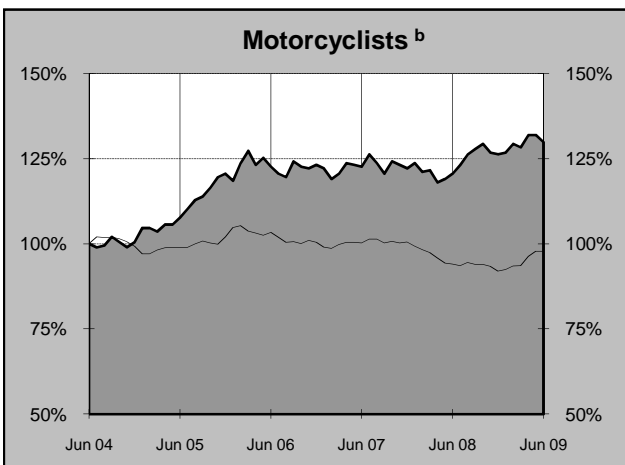
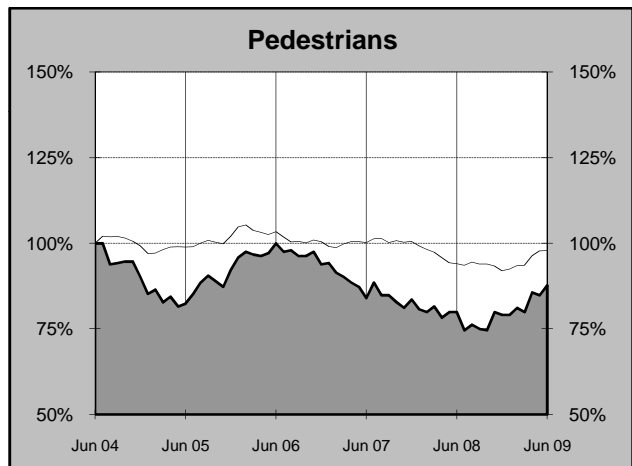
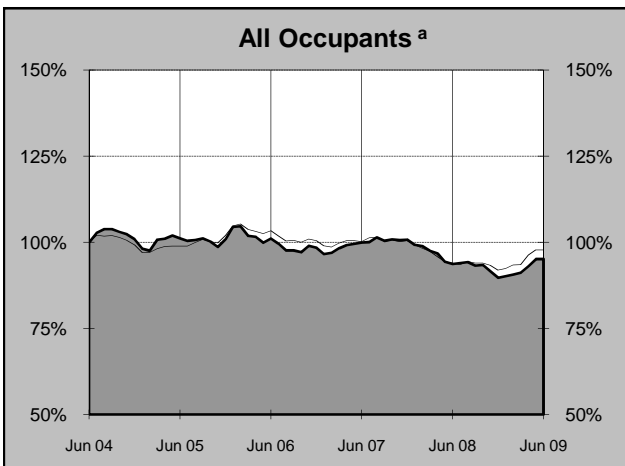
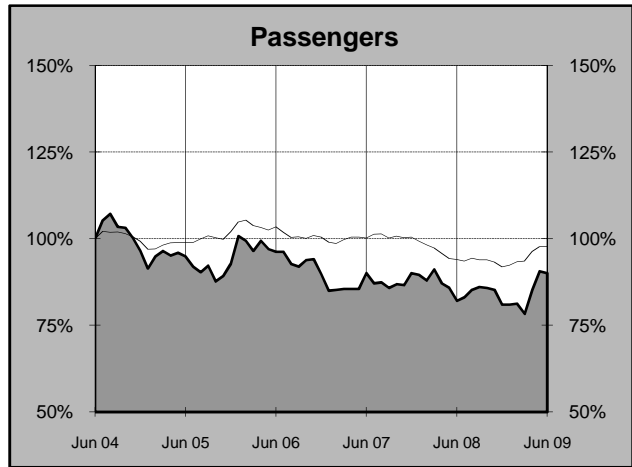
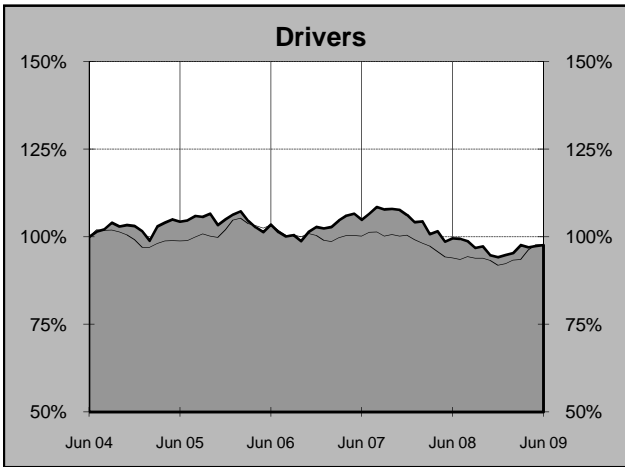
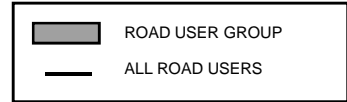


‡ Average annual percentage change based on the exponential trend from the year ending June 2004 to year ending June 2009.

# DEATHS IN EACH ROAD USER GROUP - TRENDS

## Annual deaths in each road user group - last 5 years

The number shown at each month represents the number of deaths in the preceding 12 months expressed as a percentage of the number of deaths in the 12 months to June 2004.



a Comprises drivers and passengers

b Includes pillion passengers

# NUMBER OF FATAL ROAD CRASHES IN EACH STATE / TERRITORY

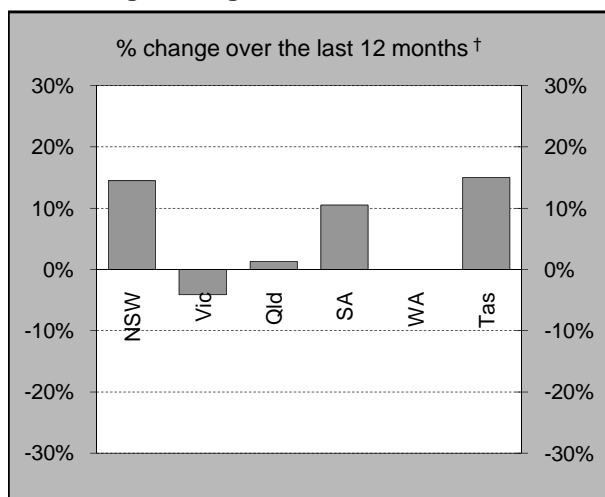
## Fatal crashes by State/Territory

for current month, year to date, 12 months ended June, and five year trend.

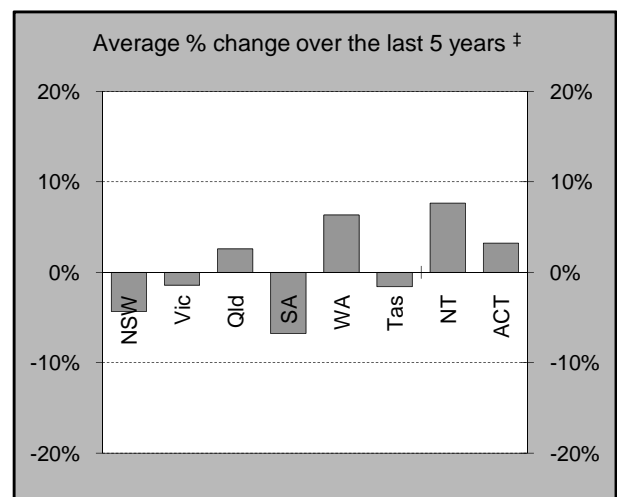
	NSW	Vic	Qld	SA	WA	Tas	NT	ACT	Australia
<b>Current month</b>									
Jun 2009	29	26	28	8	13	3	4	2	113
Jun 2008	31	18	26	6	17	5	6	3	112
% change	-6.5	44.4	7.7	33.3	-23.5	-40.0	-33.3	-33.3	0.9
<b>Year to date</b>									
Jan 2009 - Jun 2009	210	142	155	56	91	34	13	6	707
Jan 2008 - Jun 2008	168	140	139	38	88	26	31	8	638
% change	25.0	1.4	11.5	47.4	3.4	30.8	-58.1	-25.0	10.8
<b>12 months to date</b>									
Jul 2008 - Jun 2009	419	280	310	105	192	46	49	12	1,413
Jul 2007 - Jun 2008	366	292	306	95	192	40	59	14	1,364
% change	14.5	-4.1	1.3	10.5	0.0	15.0	-16.9	-14.3	3.6
<b>Average annual % change over 5 years<sup>a</sup></b>									
YE June 2004 to YE June 2009	-4.3	-1.4	2.6	-6.8	6.3	-1.6	7.6	3.2	-0.7

<sup>a</sup> Average annual percentage change based on the exponential trend for the last five 12-month periods

## Percentage change in fatal crashes in each State



† Percentage change between the two 12-month periods ending June 2009 and June 2008.  
NT and ACT not shown.



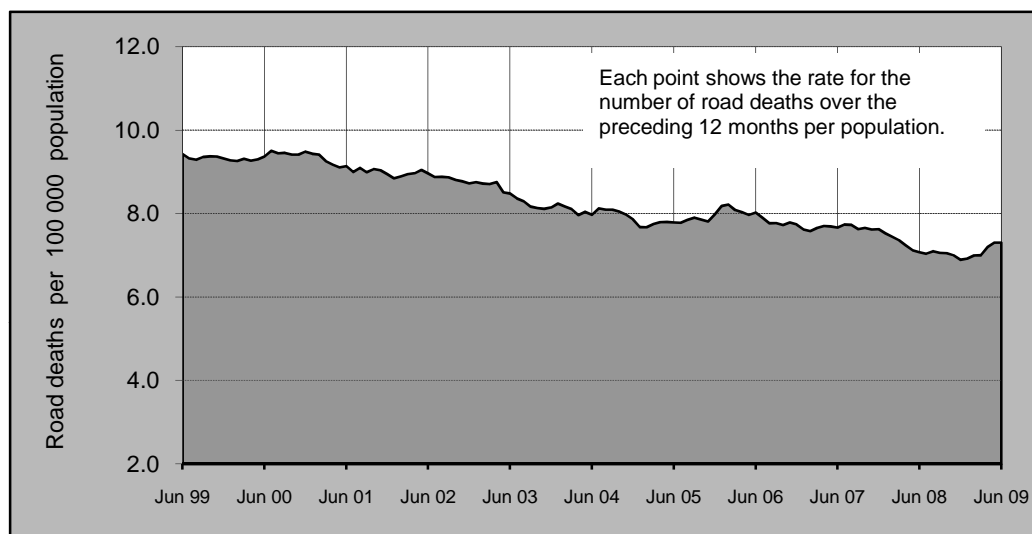
‡ Average annual percentage change based on the exponential trend from the year ending June 2004 to year ending June 2009.

## ROAD DEATH RATES

### Road deaths per 100,000 population

	NSW	Vic	Qld	SA	WA	Tas	NT	ACT	Australia
<b>12-months to date</b>									
Jul 2008 - Jun 2009	6.4	5.8	8.1	7.9	9.4	10.2	25.4	3.8	7.3
Jul 2007 - Jun 2008	5.6	6.3	7.8	6.7	10.4	8.3	31.7	4.1	7.1
<b>Calendar year</b>									
2008	5.7	5.7	7.7	6.2	9.7	8.0	34.1	4.1	6.9
2003	8.1	6.7	8.1	10.3	9.2	8.6	26.5	3.4	8.1

### Australian road deaths per year per 100 000 population - moving 12-monthly data



## CHARACTERISTICS OF FATAL CRASHES

### Proportion (per cent) of fatal crashes by speed limit, crash type, time of day, and time of week. Two years ended June 2009 and two years ended June 2004

	Speed limit (km/h) <sup>a</sup>			Time of Day	
	Up to 60	65-95	100+	Day	Night <sup>b</sup>
Jul 2007 - Jun 2009	31.9%	24.1%	44.0%	56.7%	43.3%
Jul 2002 - Jun 2004	31.2%	22.4%	46.4%	56.5%	43.5%
	Crash Type			Time of week	
	Pedestrian crash	Other single veh. Crash	Other multiple veh. crash	Week day	Week-end <sup>c</sup>
Jul 2007 - Jun 2009	14.7%	47.6%	37.8%	60.6%	39.4%
Jul 2002 - Jun 2004	15.5%	44.6%	39.9%	59.9%	40.1%

a Excludes ACT

b 6:00 pm to 5:59 am

c 6:00 pm Friday to 5:59 am Monday

# ROAD DEATHS BY AGE, GENDER AND ROAD USER GROUP

## Road deaths by age and gender for 12 months ended June 2009 and June 2008

	0-16 years	17-20 years	21-25 years	26-39 years	40-59 years	60+ years	<b>All deaths<sup>a</sup></b>
<b>Males</b>							
Jul 2008 - Jun 2009	55	145	157	299	279	180	1,123
Jul 2007 - Jun 2008	55	153	160	285	267	181	1,103
% change	<b>0.0</b>	<b>-5.2</b>	<b>-1.9</b>	<b>4.9</b>	<b>4.5</b>	<b>-0.6</b>	<b>1.8</b>
<b>Females</b>							
Jul 2008 - Jun 2009	36	70	36	74	105	110	432
Jul 2007 - Jun 2008	38	38	35	70	105	105	394
% change	<b>-5.3</b>	<b>84.2</b>	<b>2.9</b>	<b>5.7</b>	<b>0.0</b>	<b>4.8</b>	<b>9.6</b>
<b>Persons<sup>b</sup></b>							
Jul 2008 - Jun 2009	96	215	193	373	384	290	1,560
Jul 2007 - Jun 2008	94	191	195	355	372	286	1,499
% change	<b>2.1</b>	<b>12.6</b>	<b>-1.0</b>	<b>5.1</b>	<b>3.2</b>	<b>1.4</b>	<b>4.1</b>

a Includes road users with unstated age

b Includes road users with unstated gender

## Road deaths by age for each main road user group

	0-16 years	17-20 years	21-25 years	26-39 years	40-59 years	60+ years	<b>All deaths<sup>a</sup></b>
<b>Occupants<sup>b</sup></b>							
Jul 2008 - Jun 2009	75	168	142	227	242	198	1,058
Jul 2007 - Jun 2008	66	159	137	225	246	205	1,042
% change	13.6	5.7	3.6	0.9	-1.6	-3.4	1.5
<b>Motorcyclists<sup>c</sup></b>							
Jul 2008 - Jun 2009	3	22	34	94	80	18	252
Jul 2007 - Jun 2008	5	20	37	84	72	16	234
% change	-40.0	10.0	-8.1	11.9	11.1	12.5	7.7
<b>Pedestrians</b>							
Jul 2008 - Jun 2009	15	23	14	42	52	66	214
Jul 2007 - Jun 2008	19	11	20	40	42	61	195
% change	-21.1	109.1	-30.0	5.0	23.8	8.2	9.7

a Includes road users with unstated age

b Comprises drivers and passengers

c Includes pillion passengers

## TIME SERIES - QUARTERLY SUPPLEMENT

### Road deaths by road user group, 1994 to 2008

	<i>Drivers</i>	<i>Passengers</i>	<i>Pedestrians</i>	<i>Motor-cyclists<sup>a</sup></i>	<i>Cyclists</i>	<i>All road users<sup>b</sup></i>
1994	809	501	367	190	59	1,928
1995	874	491	398	204	48	2,017
1996	869	499	351	193	57	1,970
1997	776	431	328	177	52	1,767
1998	741	468	318	181	44	1,755
1999	820	428	299	176	40	1,764
2000	852	450	287	191	31	1,817
2001	776	407	290	216	46	1,737
2002	785	422	249	224	34	1,715
2003	747	420	232	188	26	1,621
2004	761	361	220	195	43	1,583
2005	775	347	225	234	41	1,627
2006	759	336	229	239	39	1,602
2007	784	337	204	237	41	1,603
2008	695	303	193	245	28	1,466

*a Includes pillion passengers*

*b Includes road users not separately specified*

### Road deaths by State/Territory, 1994 to 2008

	<i>NSW</i>	<i>Vic</i>	<i>Qld</i>	<i>SA</i>	<i>WA</i>	<i>Tas</i>	<i>NT</i>	<i>ACT</i>	<i>Australia</i>
1994	646	377	418	159	211	59	41	17	1,928
1995	620	418	456	181	209	57	61	15	2,017
1996	581	417	385	181	247	64	72	23	1,970
1997	576	377	360	148	197	32	60	17	1,767
1998	556	390	279	168	223	48	69	22	1,755
1999	577	383	314	151	218	53	49	19	1,764
2000	603	407	317	166	212	43	51	18	1,817
2001	524	444	324	153	165	61	50	16	1,737
2002	561	397	322	154	179	37	55	10	1,715
2003	539	330	310	157	180	41	53	11	1,621
2004	510	343	311	139	178	58	35	9	1,583
2005	508	346	330	148	163	51	55	26	1,627
2006	496	337	335	117	203	55	46	13	1,602
2007	435	332	360	124	235	45	58	14	1,603
2008	398	303	328	99	209	40	75	14	1,466

## DEATH RATES - QUARTERLY SUPPLEMENT

### Road death rates by State/Territory

	<i>NSW</i>	<i>Vic</i>	<i>Qld</i>	<i>SA</i>	<i>WA</i>	<i>Tas</i>	<i>NT</i>	<i>ACT</i>	<i>Australia</i>
<i>Per capita<sup>a</sup></i>									
2008	5.71	5.72	7.66	6.18	9.66	8.03	34.10	4.07	6.86
2003	8.08	6.70	8.14	10.25	9.22	8.58	26.49	3.38	8.15
<i>Per vehicle<sup>b</sup></i>									
2008	0.88	0.77	1.03	0.84	1.20	1.02	6.10	0.58	0.96
2003	1.37	0.94	1.21	1.46	1.25	1.21	5.08	0.52	1.23

*a Annual deaths per 100,000 population: 2008 at June 30 (preliminary data); 2003 at June 30 (revised data) taken from ABS catalogue 3201.0*

*b Annual deaths per 10,000 registered motor vehicles at 31 March taken from ABS catalogue 9309.0.*



# DEATHS BY AGE AND ROAD USER GROUP - QUARTERLY SUPPLEMENT

## Road deaths by road user group and age

for 12 months ended June 2009, June 2008 and five year trend

	0-16 years	17-20 years	21-25 years	26-39 years	40-59 years	60+ years	All deaths <sup>d</sup>
<b>Drivers</b>							
<i>Jul 2008 - Jun 2009</i>	8	96	90	177	204	142	721
<i>Jul 2007 - Jun 2008</i>	5	102	94	181	202	150	735
<i>% change</i>	60.0	-5.9	-4.3	-2.2	1.0	-5.3	-1.9
<i>Ave annual % change<sup>a</sup></i>							
<i>YE Jun 2004 to YE Jun 2009</i>	-1.3	-1.0	-2.2	-1.1	0.9	-1.3	-0.7
<b>Passengers</b>							
<i>Jul 2008 - Jun 2009</i>	67	72	52	50	38	56	337
<i>Jul 2007 - Jun 2008</i>	61	57	43	44	44	55	307
<i>% change</i>	9.8	26.3	20.9	13.6	-13.6	1.8	9.8
<i>Ave annual % change<sup>a</sup></i>							
<i>YE Jun 2004 to YE Jun 2009</i>	-4.3	-3.2	5.2	-0.1	-5.4	-5.8	-2.9
<b>Pedestrians</b>							
<i>Jul 2008 - Jun 2009</i>	15	23	14	42	52	66	214
<i>Jul 2007 - Jun 2008</i>	19	11	20	40	42	61	195
<i>% change</i>	-21.1	109.1	-30.0	5.0	23.8	8.2	9.7
<i>Ave annual % change<sup>a</sup></i>							
<i>YE Jun 2004 to YE Jun 2009</i>	-6.3	5.8	-0.8	-2.6	0.4	-6.4	-2.6
<b>Motorcyclists<sup>b</sup></b>							
<i>Jul 2008 - Jun 2009</i>	3	22	34	94	80	18	252
<i>Jul 2007 - Jun 2008</i>	5	20	37	84	72	16	234
<i>% change</i>	-40.0	10.0	-8.1	11.9	11.1	12.5	7.7
<i>Ave annual % change<sup>a</sup></i>							
<i>YE Jun 2004 to YE Jun 2009</i>	-13.0	3.2	-0.5	2.7	11.4	14.0	4.8
<b>Cyclists</b>							
<i>Jul 2008 - Jun 2009</i>	3	1	3	10	10	7	34
<i>Jul 2007 - Jun 2008</i>	4	1	1	6	12	4	28
<b>All road users<sup>c</sup></b>							
<i>Jul 2008 - Jun 2009</i>	96	215	193	373	384	290	1,560
<i>Jul 2007 - Jun 2008</i>	94	191	195	355	372	286	1,499
<i>% change</i>	2.1	12.6	-1.0	5.1	3.2	1.4	4.1
<i>Ave annual % change<sup>a</sup></i>							
<i>YE Jun 2004 to YE Jun 2009</i>	-6.0	-0.9	-0.1	-0.3	1.6	-3.0	-0.8

<sup>a</sup> This represents the average annual exponential change between the annual count of 5-years ago and the current annual count

<sup>b</sup> Includes pillion passengers

<sup>c</sup> Includes road users not separately classified

<sup>d</sup> Includes deaths with unstated age

# DEATHS BY STATE / TERRITORY AND ROAD USER - QUARTERLY SUPPLEMENT

## Road deaths by road user group and State/Territory for 12 months ended June 2009, June 2008 and five year trend

	NSW	Vic	Qld	SA	WA	Tas	NT	ACT	Australia
<b>Drivers</b>									
Jul 2008 - Jun 2009	224	147	145	59	99	22	21	4	721
Jul 2007 - Jun 2008	207	165	148	53	105	25	27	5	735
% change	8.2	-10.9	-2.0	11.3	-5.7	-12.0	-22.2	-	-1.9
Ave annual % change <sup>a</sup>									
Jun 2004 to Jun 2009	-1.9	-1.0	1.5	-9.0	5.2	-2.6	4.9	-3.1	-0.7
<b>Passengers</b>									
Jul 2008 - Jun 2009	87	54	80	35	40	16	20	5	337
Jul 2007 - Jun 2008	54	64	67	29	64	7	20	2	307
% change	61.1	-15.6	19.4	20.7	-37.5	128.6	0.0	-	9.8
Ave annual % change <sup>a</sup>									
Jun 2004 to Jun 2009	-12.1	-4.7	1.7	-0.2	2.2	-1.8	19.0	-	-2.9
<b>Pedestrians</b>									
Jul 2008 - Jun 2009	64	60	39	15	20	4	9	3	214
Jul 2007 - Jun 2008	60	48	37	12	17	2	17	2	195
% change	6.7	25.0	5.4	25.0	17.6	100.0	-47.1	-	9.7
Ave annual % change <sup>a</sup>									
Jun 2004 to Jun 2009	-9.7	2.4	-1.0	0.1	3.3	1.1	9.1	-0.1	-2.6
<b>Motorcyclists<sup>b</sup></b>									
Jul 2008 - Jun 2009	61	38	79	16	43	8	6	1	252
Jul 2007 - Jun 2008	54	48	71	11	33	7	5	5	234
% change	13.0	-20.8	11.3	45.5	30.3	14.3	20.0	-	7.7
Ave annual % change <sup>a</sup>									
Jun 2004 to Jun 2009	-2.7	0.5	14.1	-5.8	14.8	3.4	-	-	4.8
<b>Cyclists</b>									
Jul 2008 - Jun 2009	11	11	8	1	2	1	0	0	34
Jul 2007 - Jun 2008	11	5	8	2	2	0	0	0	28
<b>All road users<sup>c</sup></b>									
Jul 2008 - Jun 2009	448	310	351	126	205	51	56	13	1,560
Jul 2007 - Jun 2008	386	330	331	107	221	41	69	14	1,499
% change	16.1	-6.1	6.0	17.8	-7.2	24.4	-18.8	-7.1	4.1
Ave annual % change <sup>a</sup>									
Jun 2004 to Jun 2009	-5.5	-1.0	3.1	-5.8	5.7	-1.6	8.2	4.4	-0.8

<sup>a</sup> This represents the average annual exponential change between the annual count of 5-years ago and the current annual count

<sup>b</sup> Includes pillion passengers

<sup>c</sup> Includes road users not separately classified

## 1. Definition

The road safety agencies in each jurisdiction use detailed criteria to define road crashes and road deaths. Briefly, a death is classified as resulting from a road crash if the crash occurred on a public road, is unintentional and the death occurred within 30 days from injuries sustained in the crash.

Road deaths from recent months are preliminary and subject to revision.

## 2. Other sources for the tables in this bulletin

The underlying database used to produce this bulletin is available for online querying and data extraction at

[http://www.infrastructure.gov.au/roads/safety/road\\_fatality\\_statistics/fatal\\_road\\_crash\\_database.aspx](http://www.infrastructure.gov.au/roads/safety/road_fatality_statistics/fatal_road_crash_database.aspx)

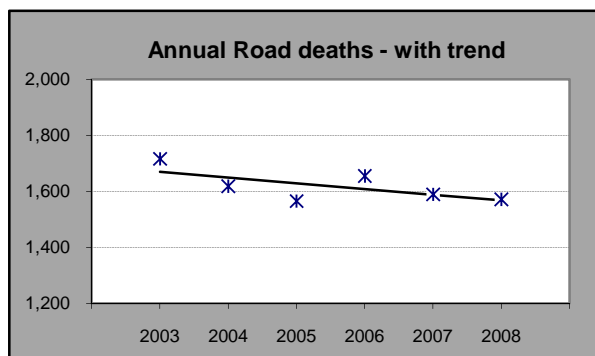
## 3. Estimation of five year trends

In this bulletin, the figures for the 'Average annual per cent change over 5 years' are calculated by fitting an exponential trend line to the last six data points (years 0 to 5).

The Excel function `—logest—` performs the fit. The resulting trend line represents a constant annual percent change over the period. An example is given below :

Example : Average Annual Change in Road Deaths

Road deaths - year ended March			
	A	B	% Change
0	2003	1,716	
1	2004	1,618	-5.7%
2	2005	1,565	-3.3%
3	2006	1,655	5.8%
4	2007	1,589	-4.0%
5	2008	1,571	-1.1%
		Average =	-1.2%



Average annual growth =  $\text{Index}(\text{Logest}(B1:B6, A1:A6), 1) - 1 = -1.2\%$