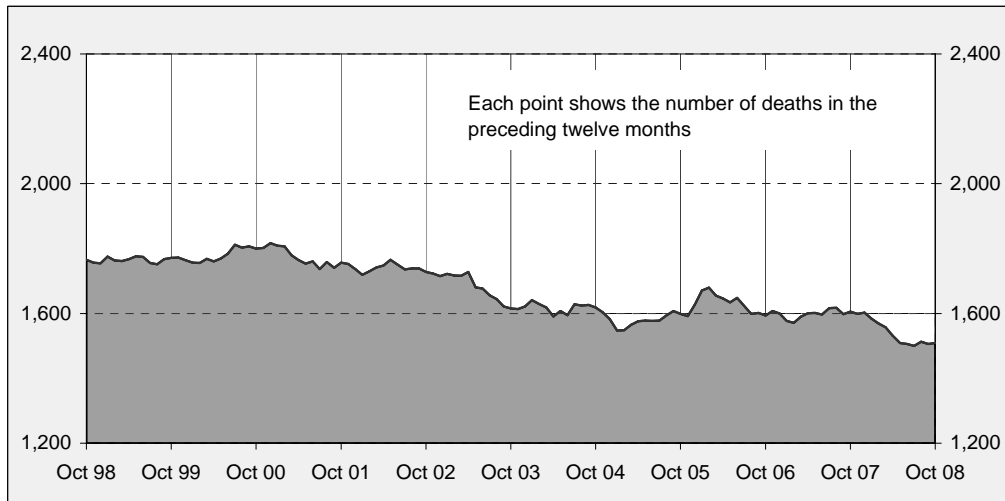




Australian road deaths for 12 months to date — last 10 years



Inquiries

For further information about data in this bulletin, contact:

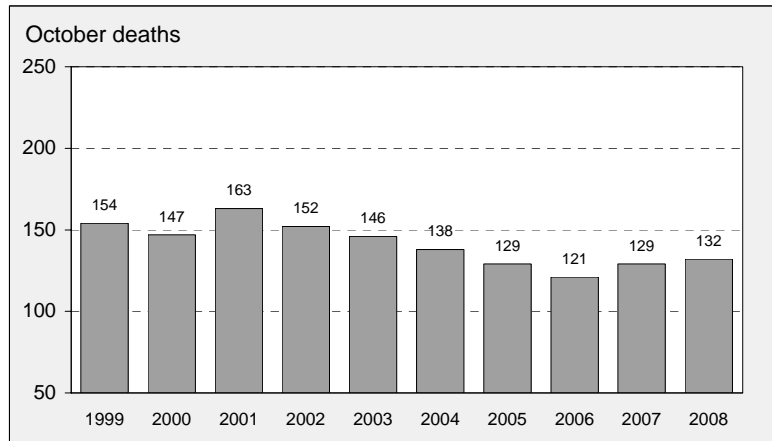
Strategy and Analysis Section
 Road Safety Branch
 GPO Box 594,
 Canberra, ACT 2601
 Email: roadsafety@infrastructure.gov.au
 Internet: www.infrastructure.gov.au

Data Sources

The data presented here are obtained from the following sources:

- Roads and Traffic Authority, NSW
 - Vicroads
 - Queensland Transport
 - Department for Transport, Energy and Infrastructure, South Australia
 - Western Australia Police
 - Department of Infrastructure, Energy and Resources, Tasmania
 - Department of Planning and Infrastructure, Northern Territory
 - Territory and Municipal Services, ACT
- Road deaths from recent months are preliminary and subject to revision.

Australian road deaths for October — last 10 years



This month's key figures

There was a total of 132 road deaths in October 2008.
 - this is a 2.3 per cent increase over the October 2007 figure.

There have been 1,220 road deaths in 2008 to the end of October.
 - this is a 7.2 per cent decrease from the same 10 month period in 2007.

NUMBER OF ROAD CRASH DEATHS IN EACH STATE / TERRITORY

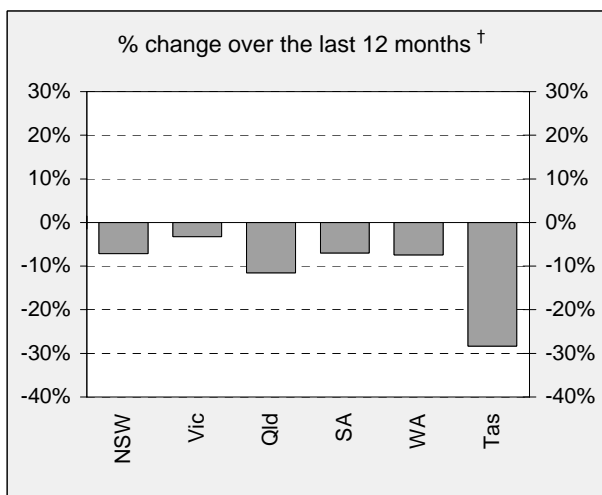
Road deaths by State/Territory

for current month, year to date, 12 months ended October, and five year trend

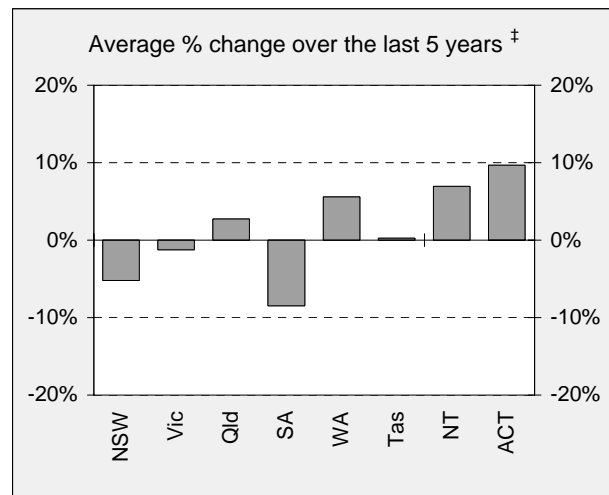
	NSW	Vic	Qld	SA	WA	Tas	NT	ACT	Australia
Current month									
Oct 2008	43	26	27	6	19	2	9	0	132
Oct 2007	33	37	23	11	16	1	7	1	129
% change	30.3	-29.7	17.4	-45.5	18.8	100.0	28.6	-100.0	2.3
Year to date									
Jan 2008 - Oct 2008	330	258	276	80	166	32	65	13	1,220
Jan 2007 - Oct 2007	361	266	307	97	189	39	43	12	1,314
% change	-8.6	-3.0	-10.1	-17.5	-12.2	-17.9	51.2	8.3	-7.2
12-months to date									
Nov 2007 - Oct 2008	404	325	329	107	212	38	79	15	1,509
Nov 2006 - Oct 2007	435	336	372	115	229	53	50	16	1,606
Difference	-31	-11	-43	-8	-17	-15	29	-1	-97
% change	-7.1	-3.3	-11.6	-7.0	-7.4	-28.3	58.0	-6.3	-6.0
Average annual % change over 5 years^a									
YE October 2003 to YE October 2008	-5.2	-1.2	2.7	-8.5	5.6	0.2	7.0	9.7	-1.0

^a Average annual percentage change based on the exponential trend for the last five 12-month periods

Percentage change in deaths in each State



† Percentage change between the two 12-month periods ending October 2008 and October 2007.
NT and ACT not shown.



‡ Average annual percentage change based on the exponential trend from the year ending October 2003 to year ending October 2008.

NUMBER OF DEATHS IN EACH ROAD USER GROUP

Road deaths by road user group and gender
for 12 months ended October 2008, October 2007 and five year trend

	Drivers	Passengers	Pedestrians	Motor-cyclists ^a	Cyclists	All road users ^b
Males						
Nov 2007 - Oct 2008	555	179	120	235	24	1,114
Nov 2006 - Oct 2007	623	173	118	225	37	1,176
% change	-10.9	3.5	1.7	4.4	-35.1	-5.3
Females						
Nov 2007 - Oct 2008	172	141	60	18	2	393
Nov 2006 - Oct 2007	173	152	84	16	4	429
% change	-0.6	-7.2	-28.6	12.5	-50.0	-8.4
Persons^c						
Nov 2007 - Oct 2008	728	321	180	253	26	1,509
Nov 2006 - Oct 2007	797	325	202	241	41	1,606
% change	-8.7	-1.2	-10.9	5.0	-36.6	-6.0
Average annual % change over 5 years^d						
YE October 2003 to YE October 2008	-0.2	-4.3	-4.4	5.4	-2.4	-1.0

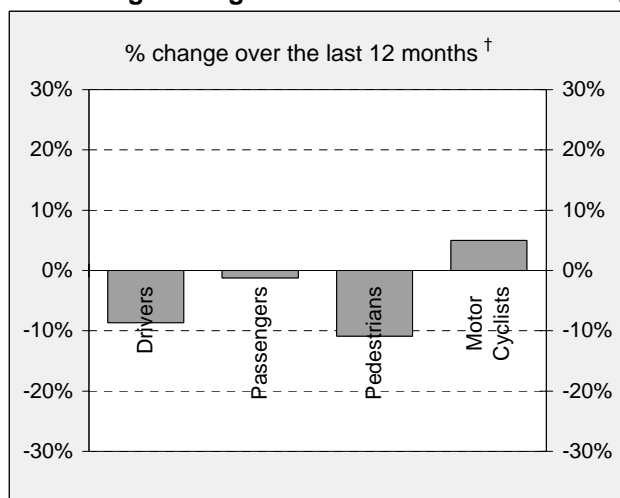
a Includes pillion passengers

b Includes road users not separately specified

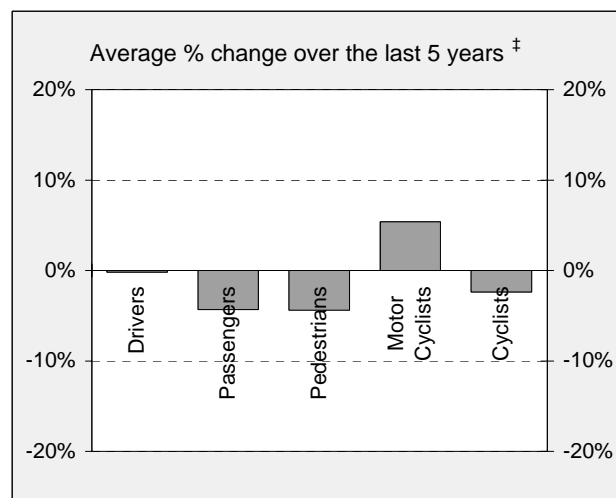
c Includes road users with unstated gender

d Average annual percentage change based on the exponential trend for the last five 12-month period:

Percentage change in deaths in each road user group



† Percentage change between the two 12-month periods ending October 2008 and October 2007.
Cyclists not shown.

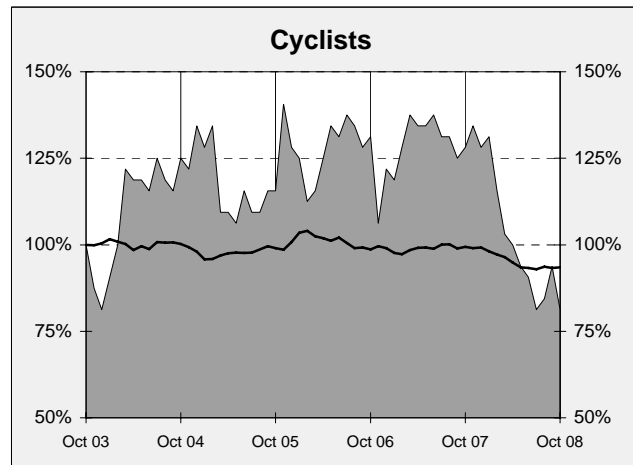
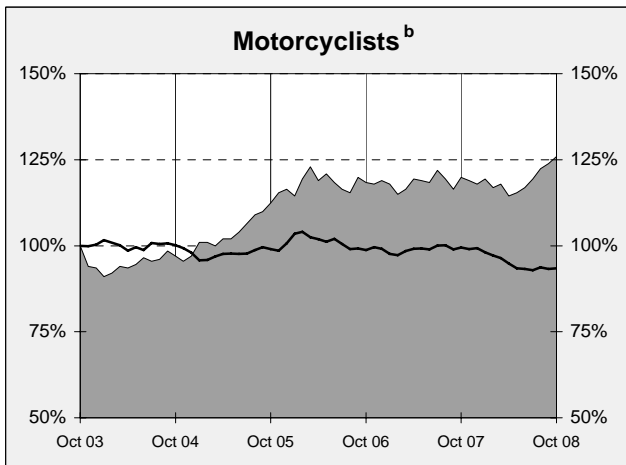
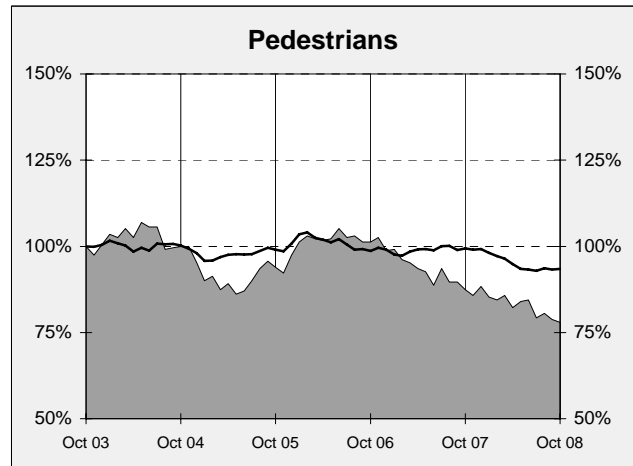
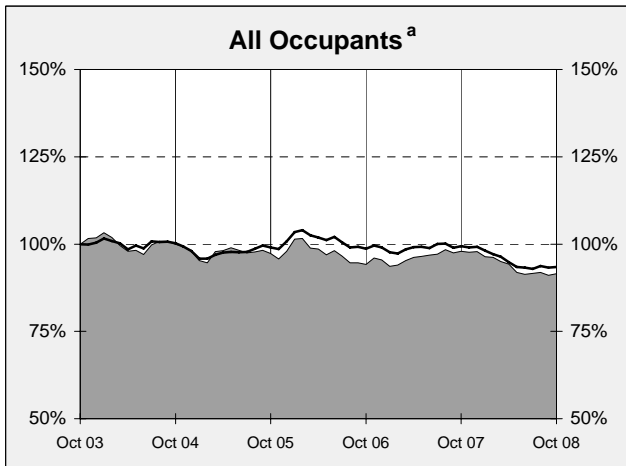
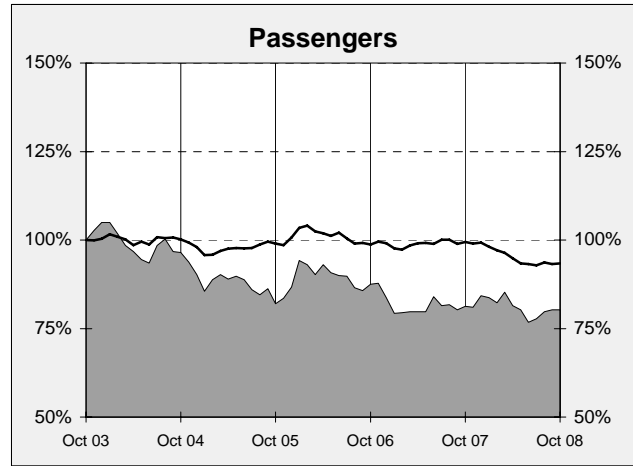
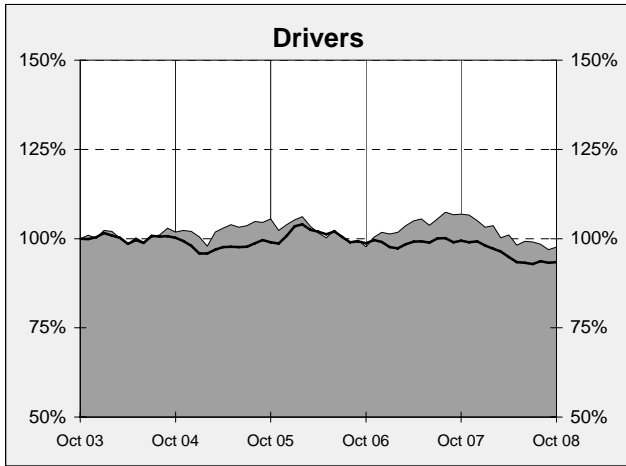


‡ Average annual percentage change based on the exponential trend from the year ending October 2003 to year ending October 2008.

DEATHS IN EACH ROAD USER GROUP - TRENDS

Annual deaths in each road user group - last 5 years

The number shown at each month represents the number of deaths in the preceding 12 months expressed as a percentage of the number of deaths in the 12 months to October 2003.



a Comprises drivers and passengers

b Includes pillion passengers

NUMBER OF FATAL ROAD CRASHES IN EACH STATE / TERRITORY

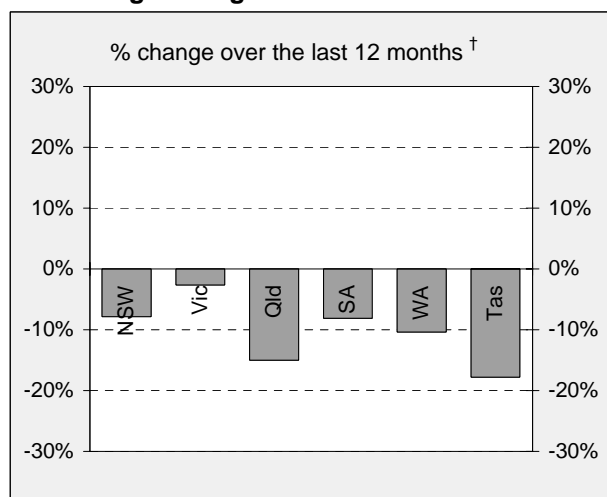
Fatal crashes by State/Territory

for current month, year to date, 12 months ended October, and five year trend.

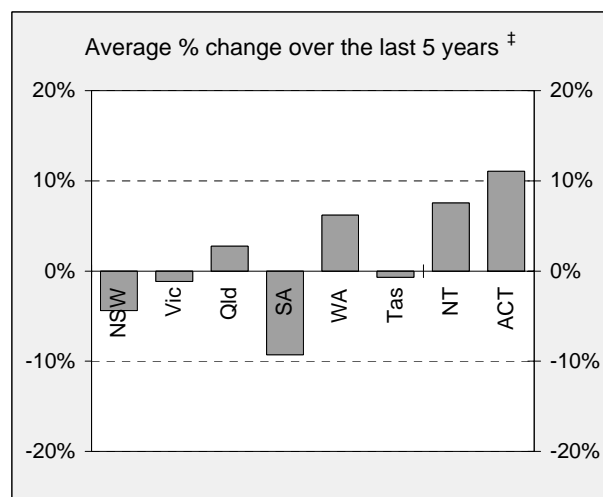
	NSW	Vic	Qld	SA	WA	Tas	NT	ACT	Australia
Current month									
Oct 2008	39	25	24	5	18	2	6	0	119
Oct 2007	32	30	22	9	15	1	7	1	117
% change	21.9	-16.7	9.1	-44.4	20.0	100.0	-14.3	-100.0	1.7
Year to date									
Jan 2008 - Oct 2008	311	236	244	69	149	31	58	13	1,111
Jan 2007 - Oct 2007	339	233	287	85	173	33	39	12	1,201
% change	-8.3	1.3	-15.0	-18.8	-13.9	-6.1	48.7	8.3	-7.5
12 months to date									
Nov 2007 - Oct 2008	377	293	295	91	190	37	66	15	1,364
Nov 2006 - Oct 2007	409	301	347	99	212	45	46	15	1,474
% change	-7.8	-2.7	-15.0	-8.1	-10.4	-17.8	43.5	0.0	-7.5
Average annual % change over 5 years^a									
YE October 2003 to YE October 2008	-4.4	-1.1	2.8	-9.3	6.2	-0.7	7.5	11.0	-0.8

^a Average annual percentage change based on the exponential trend for the last five 12-month periods

Percentage change in fatal crashes in each State



† Percentage change between the two 12-month periods ending October 2008 and October 2007. NT and ACT not shown.



‡ Average annual percentage change based on the exponential trend from the year ending October 2003 to year ending October 2008.

FATAL CRASHES INVOLVING TRUCKS OR BUSES

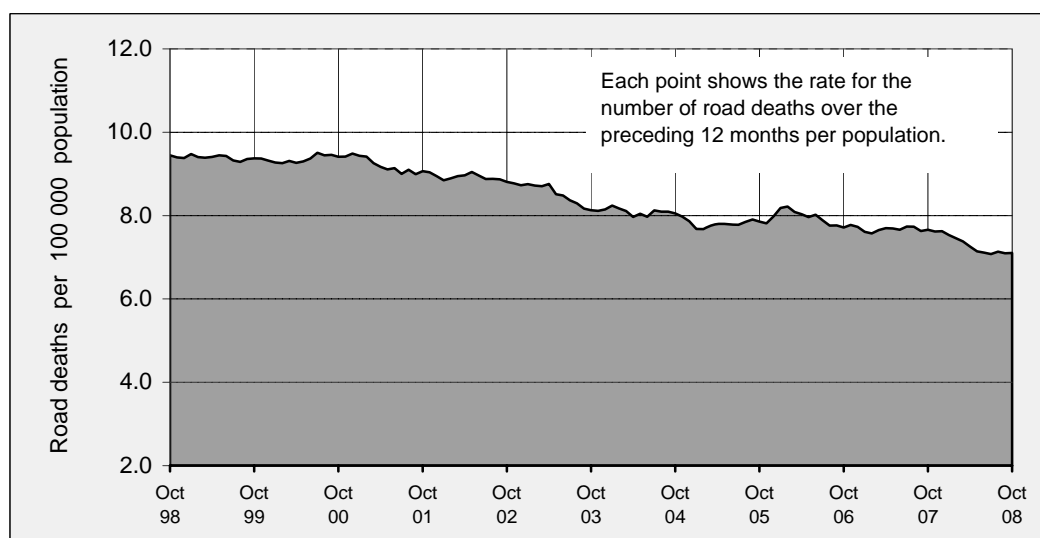
Analysis of fatal crashes involving heavy vehicles is now published in a separate quarterly bulletin.

ROAD DEATH RATES

Road deaths per 100 000 population

	NSW	Vic	Qld	SA	WA	Tas	NT	ACT	Australia
12-months to date									
Nov 2007 - Oct 2008	5.8	6.2	7.7	6.7	9.9	7.7	36.2	4.4	7.1
Nov 2006 - Oct 2007	6.3	6.5	8.9	7.3	10.9	10.8	23.3	4.7	7.7
Calendar year									
2007	6.3	6.4	8.6	7.8	11.2	9.1	26.5	4.1	7.6
2002	8.5	8.2	8.7	10.1	9.3	7.8	27.6	3.1	8.7

Australian road deaths per year per 100 000 population - moving 12-monthly data



CHARACTERISTICS OF FATAL CRASHES

Proportion (per cent) of fatal crashes by speed limit, crash type, time of day, and time of week. Two years ended October 2008 and two years ended October 2003

	Speed limit (km/h) ^a			Time of Day	
	Up to 60	65-95	100+	Day	Night ^b
Nov 2006 - Oct 2008	31.5%	22.2%	46.3%	56.5%	43.5%
Nov 2001 - Oct 2003	31.5%	22.4%	46.2%	56.4%	43.6%
	Crash Type			Time of week	
	Pedestrian crash	Other single veh. Crash	Other multiple veh. crash	Week day	Week-end ^c
Nov 2006 - Oct 2008	13.4%	48.0%	38.6%	58.9%	41.1%
Nov 2001 - Oct 2003	16.1%	44.3%	39.6%	60.7%	39.3%

a Excludes ACT

b 6:00 pm to 5:59 am

c 6:00 pm Friday to 5:59 am Monday

ROAD DEATHS BY AGE, GENDER AND ROAD USER GROUP

Road deaths by age and gender for 12 months ended October 2008 and October 2007

	0-16 years	17-20 years	21-25 years	26-39 years	40-59 years	60+ years	All deaths ^a
Males							
Nov 2007 - Oct 2008	51	148	163	284	278	181	1,114
Nov 2006 - Oct 2007	59	152	148	331	289	194	1,176
% change	-13.6	-2.6	10.1	-14.2	-3.8	-6.7	-5.3
Females							
Nov 2007 - Oct 2008	32	43	34	68	100	110	393
Nov 2006 - Oct 2007	45	49	43	73	97	118	429
% change	-28.9	-12.2	-20.9	-6.8	3.1	-6.8	-8.4
Persons^b							
Nov 2007 - Oct 2008	85	191	197	352	378	291	1,509
Nov 2006 - Oct 2007	104	201	191	404	386	312	1,606
% change	-18.3	-5.0	3.1	-12.9	-2.1	-6.7	-6.0

a Includes road users with unstated age

b Includes road users with unstated gender

Road deaths by age for each main road user group

	0-16 years	17-20 years	21-25 years	26-39 years	40-59 years	60+ years	All deaths ^a
Occupants^b							
Nov 2007 - Oct 2008	70	151	142	221	249	203	1,049
Nov 2006 - Oct 2007	65	165	134	268	254	230	1,122
% change	7.7	-8.5	6.0	-17.5	-2.0	-11.7	-6.5
Motorcyclists^c							
Nov 2007 - Oct 2008	1	23	36	91	78	24	253
Nov 2006 - Oct 2007	9	21	40	91	67	13	241
% change	-88.9	9.5	-10.0	0.0	16.4	84.6	5.0
Pedestrians							
Nov 2007 - Oct 2008	12	15	16	35	40	60	180
Nov 2006 - Oct 2007	21	13	16	35	49	66	202
% change	-42.9	15.4	0.0	0.0	-18.4	-9.1	-10.9

a Includes road users with unstated age

b Comprises drivers and passengers

c Includes pillion passengers

1. Definition

The road safety agencies in each jurisdiction use detailed criteria to define road crashes and road deaths. Briefly, a death is classified as resulting from a road crash if the crash occurred on a public road, and the death occurred within 30 days from injuries sustained in the crash. If it is determined that a crash was deliberate (for example suicide), the crash and deaths are excluded from this bulletin.

Road deaths from recent months are preliminary and subject to revision.

2. Other sources for the tables in this bulletin

The underlying database used to produce this bulletin is available for online querying and data extraction at

http://www.infrastructure.gov.au/roads/safety/road_fatality_statistics/fatal_road_crash_database.aspx

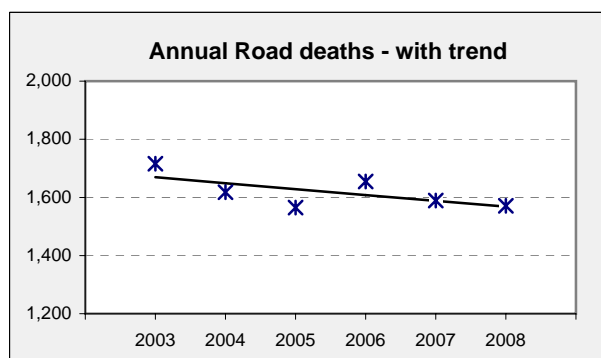
3. Estimation of five year trends

In this bulletin, the figures for the 'Average annual per cent change over 5 years' are calculated by fitting an exponential trend line to the last six data points (years 0 to 5).

The Excel function `=logest` performs the fit. The resulting trend line represents a constant annual percent change over the period. An example is given below :

Example : Average Annual Change in Road Deaths

Road deaths - year ended March			% Change
	A	B	
0	2003	1,716	
1	2004	1,618	-5.7%
2	2005	1,565	-3.3%
3	2006	1,655	5.8%
4	2007	1,589	-4.0%
5	2008	1,571	-1.1%
Average =			-1.2%



Average annual growth = $\text{Index}(\text{Logest}(B1:B6, A1:A6), 1) - 1 = -1.2\%$