



Australian Government

Department of Infrastructure,
Transport, Regional Development
and Local Government

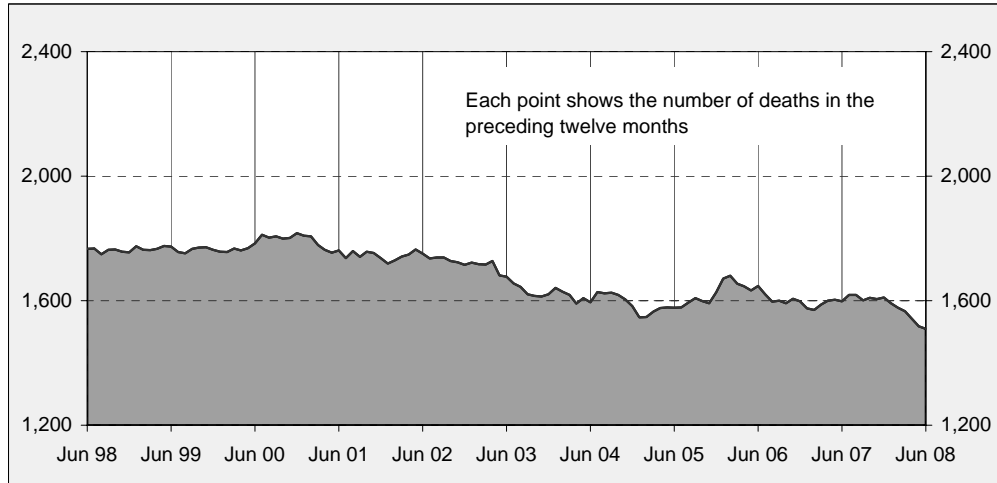
Road Deaths Australia

Monthly Bulletin

ISSN 1449-1168

June 2008

Australian road deaths for 12 months to date — last 10 years



Inquiries

For further information about data in this bulletin, contact:

Road Safety Research and Statistics
Road Safety Branch
GPO Box 594,
Canberra, ACT 2601
Email: roadsafety@infrastructure.gov.au
Internet: www.atsb.gov.au

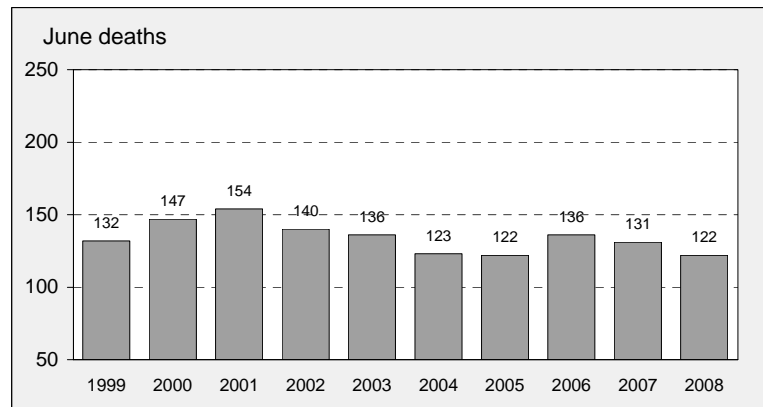
Data Sources

The data presented here are obtained from the following sources:

- Roads and Traffic Authority, NSW
- Vicroads
- Queensland Transport
- Department for Transport, Energy and Infrastructure, South Australia
- Western Australia Police
- Department of Infrastructure, Energy and Resources, Tasmania
- Department of Planning and Infrastructure, Northern Territory
- Territory and Municipal Services, ACT

• Road deaths from recent months are preliminary and subject to revision.

Australian road deaths for June — last 10 years



This month's key figures

There was a total of 122 road deaths in June 2008.

- this is an 6.9 per cent decrease from the June 2007 figure.

There have been 704 road deaths in 2008 to the end of June.

- this is a 12.5 per cent decrease from the same 6 month period in 2007.

Notice :

Due to an organisational restructure, Road Safety (and publication of *Road Deaths Australia*) is now part of the Infrastructure and Surface Transport Policy Division. Redirection links will be provided on the ATSB website.

NUMBER OF ROAD CRASH DEATHS IN EACH STATE / TERRITORY

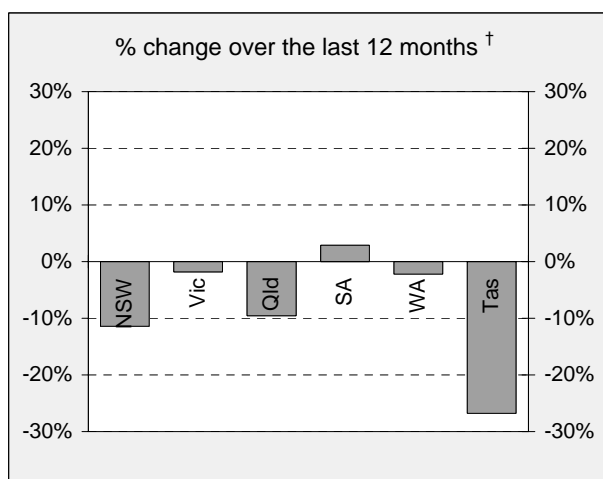
Road deaths by State/Territory

for current month, year to date, 12 months ended June, and five year trend

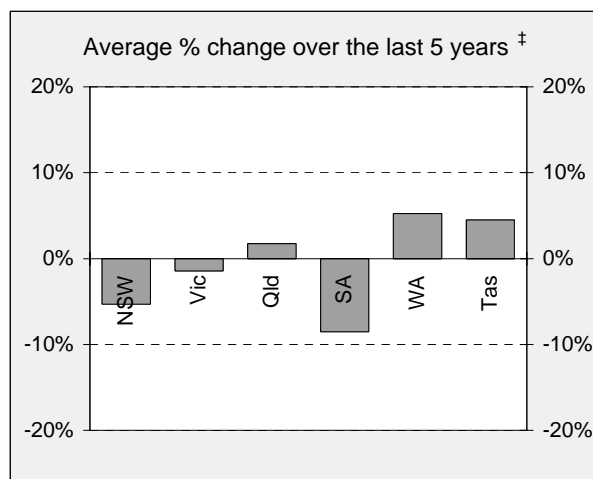
	NSW	Vic	Qld	SA	WA	Tas	NT	ACT	Australia
Current month									
Jun 2008	31	19	31	6	21	4	7	3	122
Jun 2007	42	28	34	5	11	4	5	2	131
% change	-26.2	-32.1	-8.8	20.0	90.9	0.0	40.0	50.0	-6.9
Year to date									
Jan 2008 - Jun 2008	180	156	158	41	101	27	32	9	704
Jan 2007 - Jun 2007	229	157	187	58	116	31	19	8	805
% change	-21.4	-0.6	-15.5	-29.3	-12.9	-12.9	68.4	12.5	-12.5
12-months to date									
Jul 2007 - Jun 2008	395	331	331	107	220	41	69	15	1,509
Jul 2006 - Jun 2007	446	337	366	104	225	56	47	17	1,598
Difference	-51	-6	-35	3	-5	-15	22	-2	-89
% change	-11.4	-1.8	-9.6	2.9	-2.2	-26.8	46.8	-11.8	-5.6
Average annual % change over 5 years^a									
YE June 2003 to YE June 2008	-5.3	-1.4	1.7	-8.5	5.3	4.5	2.6	8.5	-1.4

^a This represents the average annual exponential change between the annual count of 5 years ago and the current annual count

Percentage change in deaths in each State



† Percentage change between the 12-month periods



‡ Average annual percentage change based on the exponential trend from the year ending June 2003 to the year ending June 2008.

NUMBER OF DEATHS IN EACH ROAD USER GROUP

Road deaths by road user group and gender
for 12 months ended June 2008, June 2007 and five year trend

	Drivers	Passengers	Pedestrians	Motor-cyclists ^a	Cyclists	All road users ^b
Males						
Jul 2007 - Jun 2008	582	165	127	211	27	1,112
Jul 2006 - Jun 2007	601	191	130	225	40	1,187
% change	-3.2	-13.6	-2.3	-6.2	-32.5	-6.3
	-3.2	-13.6	-2.3	-6.2	-32.5	-6.3
Females						
Jul 2007 - Jun 2008	162	141	67	22	2	394
Jul 2006 - Jun 2007	174	144	73	14	4	409
% change	-6.9	-2.1	-8.2	57.1	-50.0	-3.7
Persons^c						
Jul 2007 - Jun 2008	746	307	194	233	29	1,509
Jul 2006 - Jun 2007	776	336	203	239	44	1,598
% change	-3.9	-8.6	-4.4	-2.5	-34.1	-5.6
Average annual % change over 5 years^d						
YE June 2003 to YE June 2008	-0.5	-5.2	-2.8	3.9	-1.2	-1.4

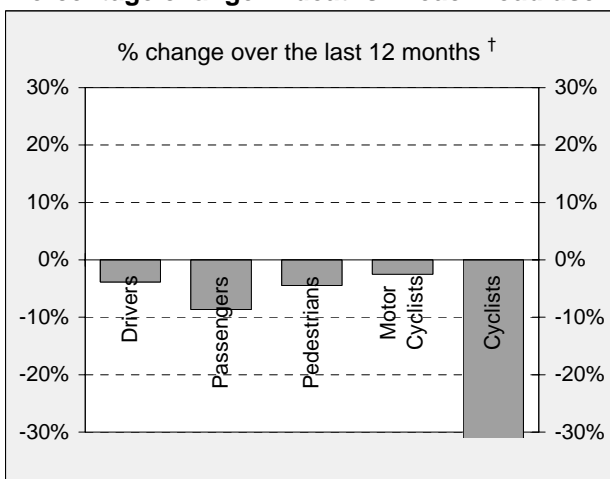
a Includes pillion passengers

b Includes road users not separately specified

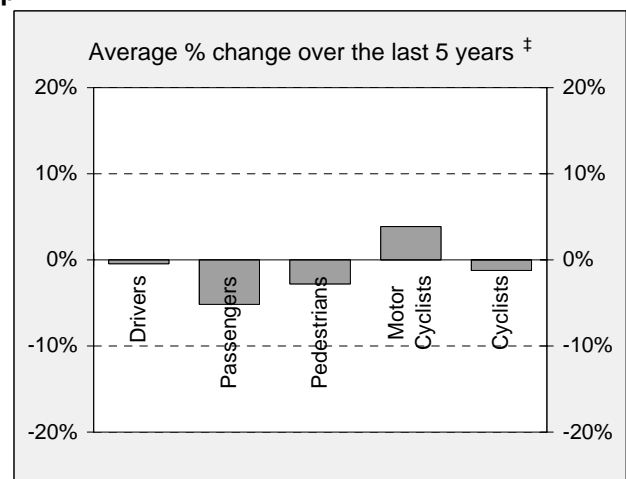
c Includes road users with unstated gender

d Average annual percentage change based on the exponential trend for the last five 12-month period.

Percentage change in deaths in each road user group



† Percentage change between the 12-month periods of Jul 2006 - Jun 2007 and Jul 2007 - Jun 2008

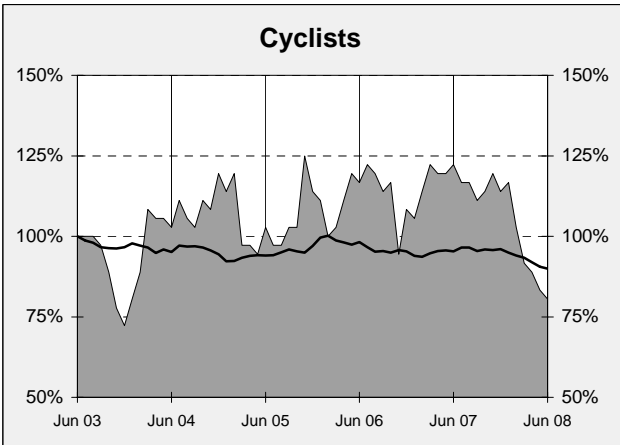
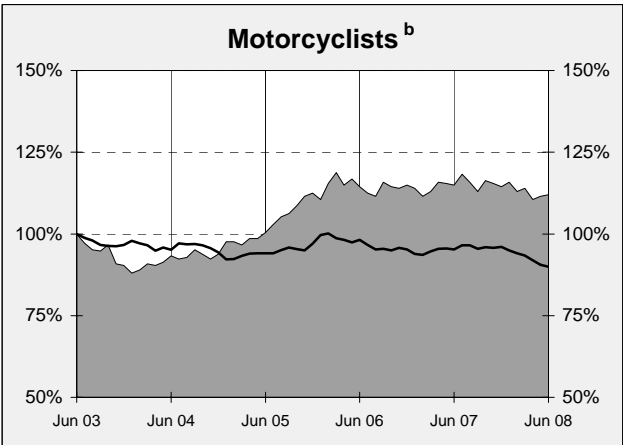
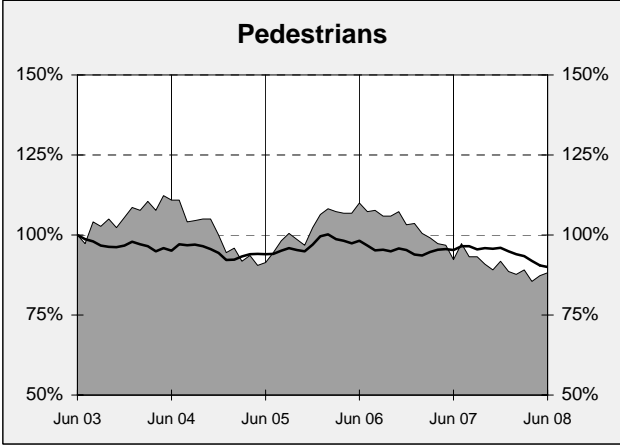
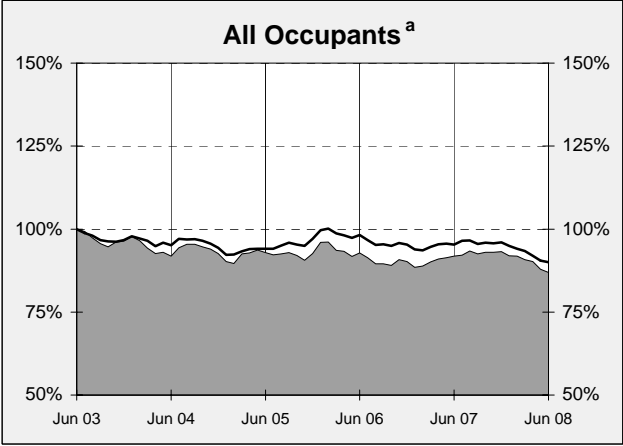
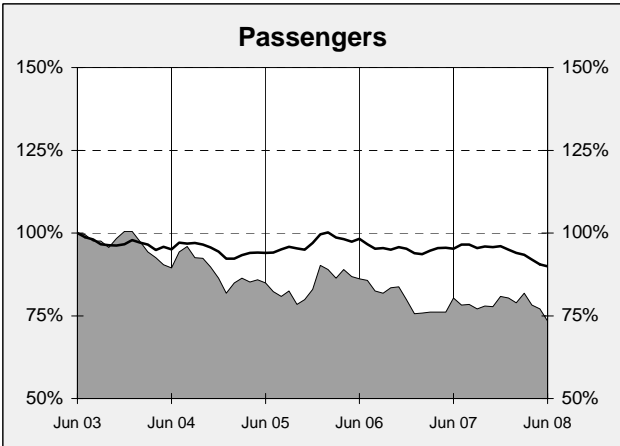
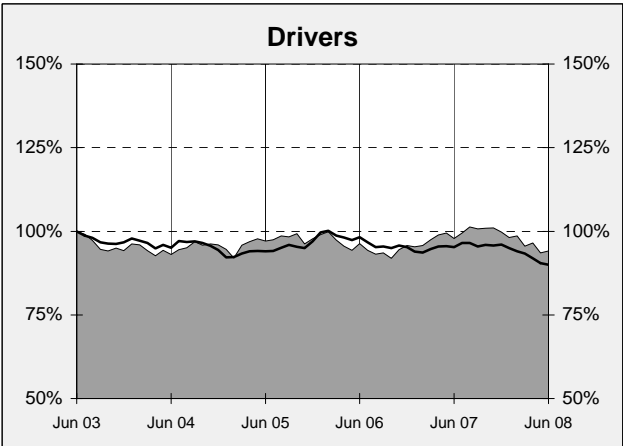
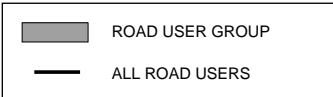


‡ Average annual percentage change based on the exponential trend over the period beginning with the 12 months to Jun 03 and ending with the 12 months to Jun 08.

DEATHS IN EACH ROAD USER GROUP - TRENDS

Annual deaths in each road user group - last 5 years

The number shown at each month represents the number of deaths in the preceding 12 months expressed as a percentage of the number of deaths in the 12 months to June 2003.



a Comprises drivers and passengers

b Includes pillion passengers

NUMBER OF FATAL ROAD CRASHES IN EACH STATE / TERRITORY

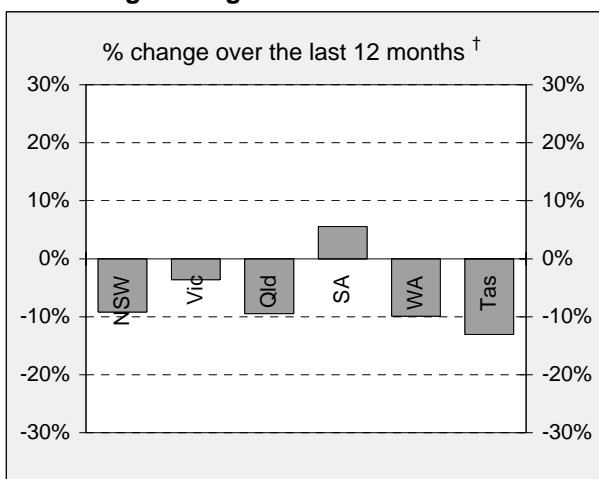
Fatal crashes by State/Territory

for current month, year to date, 12 months ended June, and five year trend.

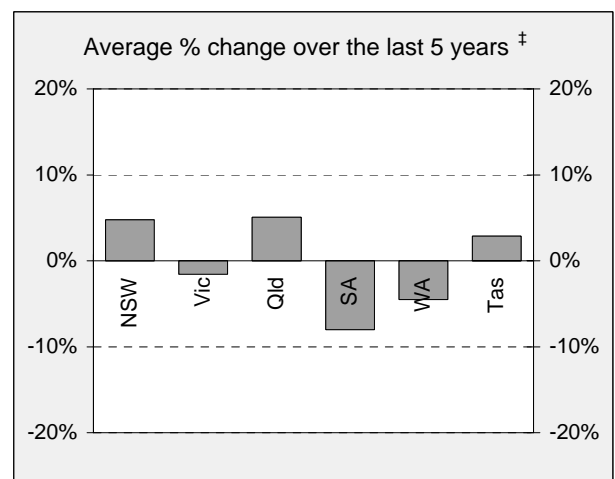
	NSW	Vic	Qld	SA	WA	Tas	NT	ACT	Australia
Current month									
Jun 2008	29	17	26	6	16	4	6	3	107
Jun 2007	37	18	29	5	11	3	5	2	110
% change	-21.6	-5.6	-10.3	20.0	45.5	33.3	20.0	50.0	-2.7
Year to date									
Jan 2008 - Jun 2008	172	141	139	38	87	26	31	9	643
Jan 2007 - Jun 2007	211	137	171	50	110	25	18	8	730
% change	-18.5	2.9	-18.7	-24.0	-20.9	4.0	72.2	12.5	-11.9
12 months to date									
Jul 2007 - Jun 2008	375	293	306	95	191	40	59	15	1,374
Jul 2006 - Jun 2007	413	304	338	90	212	46	43	16	1,462
% change	-9.2	-3.6	-9.5	5.6	-9.9	-13.0	37.2	-6.3	-6.0
Average annual % change over 5 years^a									
YE June 2003 to YE June 2008	-4.5	-1.5	2.4	-8.5	5.6	3.2	5.6	11.9	-0.9

^a Average annual percentage change based on the exponential trend for the last five 12-month periods

Percentage change in fatal crashes in each State



† Percentage change between the 12-month periods



‡ Average annual percentage change based on the exponential trend from the year ending June 2003 to the year ending June 2008.

FATAL CRASHES INVOLVING TRUCKS OR BUSES

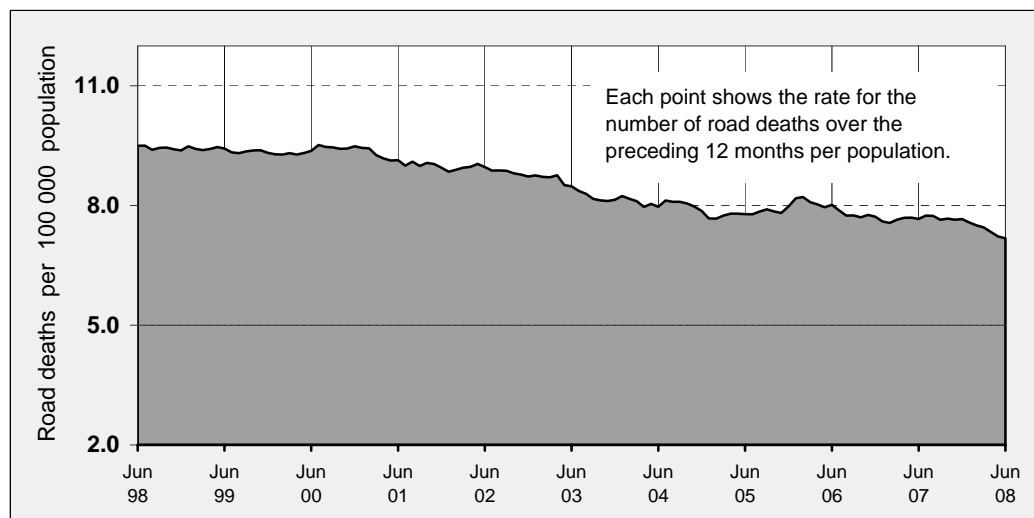
Analysis of fatal crashes involving heavy vehicles is now published in a separate quarterly bulletin

ROAD DEATH RATES

Road deaths per 100 000 population

	NSW	Vic	Qld	SA	WA	Tas	NT	ACT	Australia
12-months to date									
Jul 2007 - Jun 2008	5.7	6.3	7.9	6.8	10.4	8.3	32.0	4.4	7.2
Jul 2006 - Jun 2007	6.5	6.5	8.9	6.6	10.8	11.4	22.1	5.1	7.7
Calendar year									
2007	6.4	6.4	8.6	7.8	11.2	9.1	26.0	4.1	7.7
2002	8.5	8.2	8.7	10.1	9.3	7.8	27.6	3.1	8.7

Australian road deaths per year per 100 000 population - moving 12-monthly data



CHARACTERISTICS OF FATAL CRASHES

Proportion (per cent) of fatal crashes by speed limit, crash type, time of day, and time of week. Two years ended June 2008 and two years ended June 2003

	Speed limit (km/h) ^a			Time of Day	
	Up to 60	65-95	100+	Day	Night ^b
Jul 2006 - Jun 2008	31.3%	22.1%	46.6%	56.3%	43.7%
Jul 2001 - Jun 2003	31.4%	22.0%	46.6%	56.1%	43.9%
	Crash Type			Time of week	
	Pedestrian crash	Other single veh. Crash	Other multiple veh. crash	Week day	Week-end ^c
Jul 2006 - Jun 2008	14.0%	47.5%	38.6%	58.2%	41.8%
Jul 2001 - Jun 2003	16.4%	43.8%	39.7%	59.7%	40.3%

^a Excludes ACT

^b 6:00 pm to 5:59 am

^c 6:00 pm Friday to 5:59 am Monday

ROAD DEATHS BY AGE, GENDER AND ROAD USER GROUP

Road deaths by age and gender

for 12 months ended June 2008 and June 2007

	0-16 years	17-20 years	21-25 years	26-39 years	40-59 years	60+ years	All deaths ^a
Males							
Jul 2007 - Jun 2008	55	153	160	284	271	186	1,112
Jul 2006 - Jun 2007	64	159	147	336	288	190	1,187
% change	-14.1	-3.8	8.8	-15.5	-5.9	-2.1	-6.3
Females							
Jul 2007 - Jun 2008	38	38	35	70	106	103	394
Jul 2006 - Jun 2007	47	49	48	68	90	106	409
% change	-19.1	-22.4	-27.1	2.9	17.8	-2.8	-3.7
Persons^b							
Jul 2007 - Jun 2008	95	191	195	354	377	289	1,509
Jul 2006 - Jun 2007	113	208	195	404	378	296	1,598
% change	-15.9	-8.2	0.0	-12.4	-0.3	-2.4	-5.6

a Includes road users with unstated age

b Includes road users with unstated gender

Road deaths by age for each main road user group

	0-16 years	17-20 years	21-25 years	26-39 years	40-59 years	60+ years	All deaths ^a
Occupants^b							
Jul 2007 - Jun 2008	67	159	137	225	250	209	1,053
Jul 2006 - Jun 2007	76	172	140	271	241	209	1,112
% change	-11.8	-7.6	-2.1	-17.0	3.7	0.0	-5.3
Motorcyclists^c							
Jul 2007 - Jun 2008	5	20	37	84	72	15	233
Jul 2006 - Jun 2007	7	17	40	90	73	12	239
% change	-28.6	17.6	-7.5	-6.7	-1.4	25.0	-2.5
Pedestrians							
Jul 2007 - Jun 2008	19	11	20	39	42	61	194
Jul 2006 - Jun 2007	21	17	12	35	47	70	203
% change	-9.5	-35.3	66.7	11.4	-10.6	-12.9	-4.4

a Includes road users with unstated age

b Comprises drivers and passengers

c Includes pillion passengers

TIME SERIES - QUARTERLY SUPPLEMENT

Road deaths by road user group, 1993 to 2007

	<i>Drivers</i>	<i>Passengers</i>	<i>Pedestrians</i>	<i>Motor-cyclists^a</i>	<i>Cyclists</i>	<i>All road users^b</i>
1993	859	513	331	203	45	1,953
1994	809	501	367	190	59	1,928
1995	874	491	398	204	48	2,017
1996	869	499	351	193	57	1,970
1997	776	431	328	177	52	1,767
1998	741	468	318	181	44	1,755
1999	820	428	299	176	40	1,764
2000	852	450	287	191	31	1,817
2001	776	407	290	216	46	1,737
2002	785	422	249	224	34	1,715
2003	747	420	232	188	26	1,621
2004	761	361	220	195	43	1,583
2005	775	347	225	234	41	1,627
2006	759	334	227	239	39	1,598
2007	791	338	202	238	41	1,610

a Includes pillion passengers

b Includes road users not separately specified

Road deaths by State/Territory, 1993 to 2007

	<i>NSW</i>	<i>Vic</i>	<i>Qld</i>	<i>SA</i>	<i>WA</i>	<i>Tas</i>	<i>NT</i>	<i>ACT</i>	<i>Australia</i>
1993	581	435	396	218	209	58	44	12	1,953
1994	646	377	418	159	211	59	41	17	1,928
1995	620	418	456	181	209	57	61	15	2,017
1996	581	417	385	181	247	64	72	23	1,970
1997	576	377	360	148	197	32	60	17	1,767
1998	556	390	279	168	223	48	69	22	1,755
1999	577	383	314	151	218	53	49	19	1,764
2000	603	407	317	166	212	43	51	18	1,817
2001	524	444	324	153	165	61	50	16	1,737
2002	561	397	322	154	179	37	55	10	1,715
2003	539	330	310	157	180	41	53	11	1,621
2004	510	343	311	139	178	58	35	9	1,583
2005	508	346	330	148	163	51	55	26	1,627
2006	496	337	335	117	203	55	42	13	1,598
2007	444	332	360	124	235	45	56	14	1,610

DEATH RATES - QUARTERLY SUPPLEMENT

Road death rates by State/Territory

	<i>NSW</i>	<i>Vic</i>	<i>Qld</i>	<i>SA</i>	<i>WA</i>	<i>Tas</i>	<i>NT</i>	<i>ACT</i>	<i>Australia</i>
<i>Per capita^a</i>									
2007	6.44	6.38	8.61	7.83	11.16	9.12	26.05	4.12	7.66
2002	8.46	8.16	8.67	10.12	9.30	7.83	27.58	3.10	8.73
<i>Per vehicle^b</i>									
2007	1.03	0.87	1.19	1.07	1.40	1.23	4.74	0.61	1.09
2002	1.46	1.16	1.32	1.45	1.27	1.10	5.30	0.48	1.34

a Annual deaths per 100,000 population: 2007 at June 30 (preliminary data); 2002 at June 30 (revised data) taken from ABS catalogue 3201.0

b Annual deaths per 10,000 registered motor vehicles: 2007 at Mar 31; 2002 at Oct 31 taken from ABS catalogue 9309.0.

DEATHS BY AGE AND ROAD USER GROUP - QUARTERLY SUPPLEMENT

Road deaths by road user group and age
for 12 months ended June 2008, June 2007 and five year trend

	0-16 years	17-20 years	21-25 years	26-39 years	40-59 years	60+ years	All deaths ^d
Drivers							
Jul 2007 - Jun 2008	6	102	94	181	206	154	746
Jul 2006 - Jun 2007	6	106	102	212	196	152	776
% change	0.0	-3.8	-7.8	-14.6	5.1	1.3	-3.9
Ave annual % change ^a							
YE Jun 2003 to YE Jun 2008	-0.6	-1.9	-0.9	1.1	-1.3	-0.4	-0.5
Passengers							
Jul 2007 - Jun 2008	61	57	43	44	44	55	307
Jul 2006 - Jun 2007	70	66	38	59	45	57	336
% change	-12.9	-13.6	13.2	-25.4	-2.2	-3.5	-8.6
Ave annual % change ^a							
YE Jun 2003 to YE Jun 2008	-6.5	-7.3	-1.0	-6.4	-2.6	-4.5	-5.2
Pedestrians							
Jul 2007 - Jun 2008	19	11	20	39	42	61	194
Jul 2006 - Jun 2007	21	17	12	35	47	70	203
% change	-9.5	-35.3	66.7	11.4	-10.6	-12.9	-4.4
Ave annual % change ^a							
YE Jun 2003 to YE Jun 2008	-3.5	-3.6	3.4	-0.6	-4.1	-4.8	-2.8
Motorcyclists^b							
Jul 2007 - Jun 2008	5	20	37	84	72	15	233
Jul 2006 - Jun 2007	7	17	40	90	73	12	239
% change	-28.6	17.6	-7.5	-6.7	-1.4	25.0	-2.5
Ave annual % change ^a							
YE Jun 2003 to YE Jun 2008	11.4	-0.1	5.1	0.0	8.0	16.8	3.9
Cyclists							
Jul 2007 - Jun 2008	4	1	1	6	13	4	29
Jul 2006 - Jun 2007	9	2	3	8	17	5	44
All road users^c							
Jul 2007 - Jun 2008	95	191	195	354	377	289	1,509
Jul 2006 - Jun 2007	113	208	195	404	378	296	1,598
% change	-15.9	-8.2	0.0	-12.4	-0.3	-2.4	-5.6
Ave annual % change ^a							
YE Jun 2003 to YE Jun 2008	-5.4	-3.8	0.4	-0.7	0.0	-1.9	-1.4

a This represents the average annual exponential change between the annual count of 5-years ago and the current annual count

b Includes pillion passengers

c Includes road users not separately classified

d Includes deaths with unstated age

DEATHS BY STATE / TERRITORY AND ROAD USER - QUARTERLY SUPPLEMENT

Road deaths by road user group and State/Territory for 12 months ended June 2008, June 2007 and five year trend

	NSW	Vic	Qld	SA	WA	Tas	NT	ACT	Australia
Drivers									
Jul 2007 - Jun 2008	214	166	149	53	105	25	27	7	746
Jul 2006 - Jun 2007	222	166	180	44	112	23	20	9	776
% change	-3.6	0.0	-17.2	20.5	-6.3	8.7	35.0	-	-3.9
Ave annual % change ^a									
Jun 2003 to Jun 2008	-3.1	-1.6	2.7	-9.5	5.4	8.0	5.9	14.0	-0.5
Passengers									
Jul 2007 - Jun 2008	54	64	67	29	64	7	20	2	307
Jul 2006 - Jun 2007	92	74	68	24	48	18	10	2	336
% change	-41.3	-13.5	-1.5	20.8	33.3	-61.1	100.0	-	-8.6
Ave annual % change ^a									
Jun 2003 to Jun 2008	-11.6	-5.3	-3.1	-8.4	5.0	9.4	-5.7	-	-5.2
Pedestrians									
Jul 2007 - Jun 2008	60	48	36	12	17	2	17	2	194
Jul 2006 - Jun 2007	63	43	40	13	24	5	13	2	203
% change	-4.8	11.6	-10.0	-7.7	-29.2	-60.0	30.8	-	-4.4
Ave annual % change ^a									
Jun 2003 to Jun 2008	-8.3	2.4	-3.1	-5.5	-0.4	-10.5	20.3	8.2	-2.8
Motorcyclists ^b									
Jul 2007 - Jun 2008	55	48	71	11	32	7	5	4	233
Jul 2006 - Jun 2007	59	45	67	17	36	8	4	3	239
% change	-6.8	6.7	6.0	-35.3	-11.1	-12.5	25.0	-	-2.5
Ave annual % change ^a									
Jun 2003 to Jun 2008	-0.9	3.0	9.4	-7.4	9.8	-3.0	-	-	3.9
Cyclists									
Jul 2007 - Jun 2008	12	5	8	2	2	0	0	0	29
Jul 2006 - Jun 2007	10	9	11	6	5	2	0	1	44
All road users ^c									
Jul 2007 - Jun 2008	395	331	331	107	220	41	69	15	1,509
Jul 2006 - Jun 2007	446	337	366	104	225	56	47	17	1,598
% change	-11.4	-1.8	-9.6	2.9	-2.2	-26.8	46.8	-11.8	-5.6
Ave annual % change ^a									
Jun 2003 to Jun 2008	-5.3	-1.4	1.7	-8.5	5.3	4.5	2.6	8.5	-1.4

^a This represents the average annual exponential change between the annual count of 5-years ago and the current annual count

^b Includes pillion passengers

^c Includes road users not separately classified