



Australian Government

Department of Infrastructure,
Transport, Regional Development
and Local Government

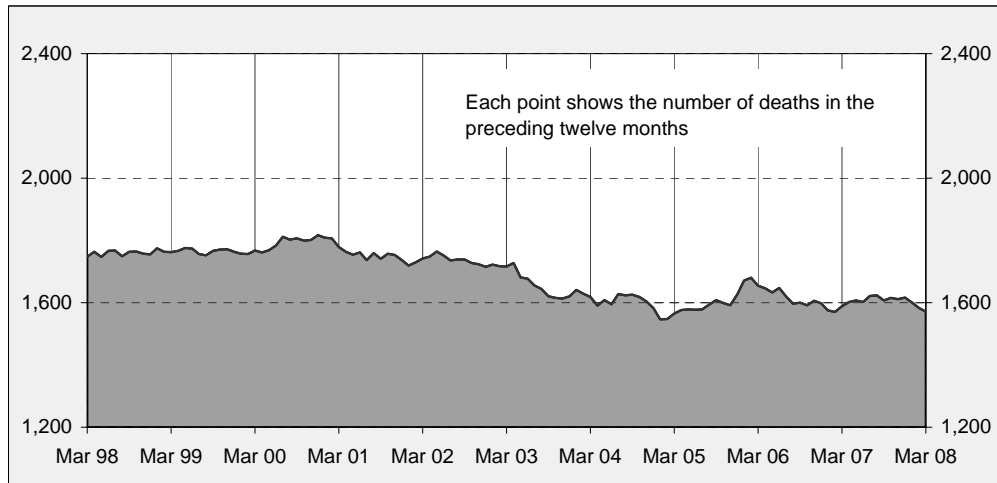
Road Deaths Australia

Monthly Bulletin

ISSN 1449-1168

March 2008

Australian road deaths for 12 months to date — last 10 years



Inquiries

For further information about data in this bulletin, contact:

Road Safety Research and Statistics
Road Safety Branch
GPO Box 594,
Canberra, ACT 2601
Email: roadsafety@infrastructure.gov.au
Internet: www.atsb.gov.au

Data Sources

The data presented here are obtained from the following sources:

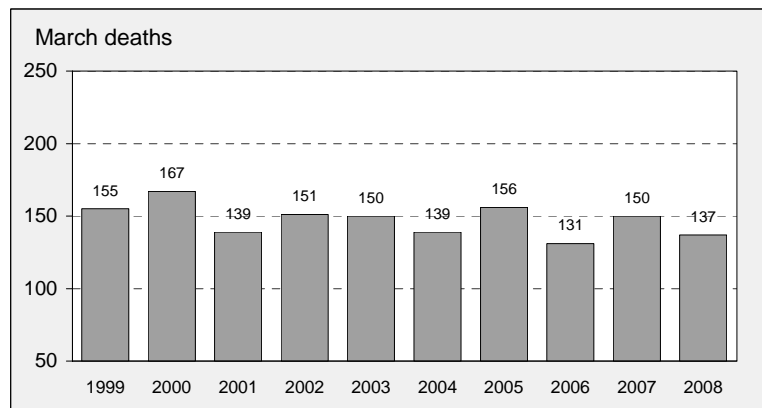
- Roads and Traffic Authority, NSW
- Vicroads
- Queensland Transport
- Department for Transport, Energy and Infrastructure, South Australia
- Western Australia Police
- Department of Infrastructure, Energy and Resources, Tasmania
- Department of Planning and Infrastructure, Northern Territory
- Territory and Municipal Services, ACT

Note

Road death statistics for recent months are preliminary and subject to revision. They include any deaths occurring within 30 days of a crash stemming from injuries received in the crash.

© Copyright. Commonwealth of Australia
April 2008 / INFRASTRUCTURE 08107

Australian road deaths for March — last 10 years



This month's key figures

There was a total of 137 road deaths in March 2008.
- this is an 8.7 per cent decrease from the March 2007 figure.

There have been 359 road deaths in 2008 to the end of March.
- this is an 11.1 per cent decrease from the same 3 month period in 2007.

Notice :

Due to an organisational restructure, Road Safety (and publication of *Road Deaths Australia*) is now part of the Infrastructure and Surface Transport Policy Division. Redirection links will be provided on the ATSB website.

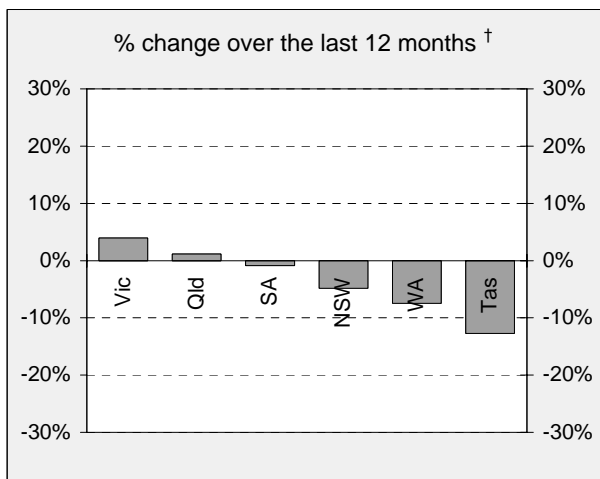
NUMBER OF ROAD CRASH DEATHS IN EACH STATE / TERRITORY

Road deaths by State/Territory for month, year to date, and twelve months - period ended March 2008 and period ended March 2007

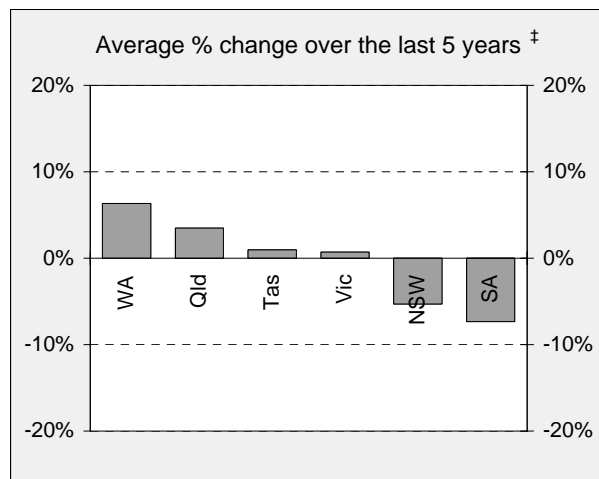
	NSW	Vic	Qld	SA	WA	Tas	NT	ACT	Australia
Current month									
Mar 2008	31	40	27	7	22	7	3	0	137
Mar 2007	42	32	30	10	27	6	2	1	150
% change	-26.2	25.0	-10.0	-30.0	-18.5	16.7	50.0	-100.0	-8.7
Year to date									
Jan 2008 - Mar 2008	90	90	79	21	49	16	10	4	359
Jan 2007 - Mar 2007	107	78	87	31	74	15	10	2	404
% change	-15.9	15.4	-9.2	-32.3	-33.8	6.7	0.0	100.0	-11.1
12-months to date									
Apr 2007 - Mar 2008	431	344	352	114	210	48	56	16	1,571
Apr 2006 - Mar 2007	453	331	348	115	227	55	47	13	1,589
Difference	-22	13	4	-1	-17	-7	9	3	-18
% change	-4.9	3.9	1.1	-0.9	-7.5	-12.7	19.1	23.1	-1.1
Average annual % change over 5 years^a									
Apr 2003 to Mar 2008	-5.3	0.7	3.5	-7.3	6.3	1.0	4.9	10.6	-0.4

^a Average annual percentage change based on the exponential trend for the last five 12-month periods

Percentage change in deaths in each State



[†] Percentage change between the 12-month periods of Apr 2006 - Mar 2007 and Apr 2007 - Mar 2008



[‡] Average annual percentage change based on the exponential trend for the last five 12-month periods

NUMBER OF DEATHS IN EACH ROAD USER GROUP

Road deaths by road user group and gender for twelve months ended March 2008 and twelve months ended March 2007

	Drivers	Passengers	Pedestrians	Motor-cyclists ^a	Cyclists	All road users ^b
Males						
Apr 2007 - Mar 2008	594	173	119	217	31	1,134
Apr 2006 - Mar 2007	603	193	146	225	38	1,205
% change	-1.5	-10.4	-18.5	-3.6	-18.4	-5.9
Females						
Apr 2007 - Mar 2008	165	166	77	21	2	431
Apr 2006 - Mar 2007	170	124	72	10	6	382
% change	-2.9	33.9	6.9	110.0	-66.7	12.8
Persons^c						
Apr 2007 - Mar 2008	762	342	196	238	33	1,571
Apr 2006 - Mar 2007	774	318	218	235	44	1,589
% change	-1.6	7.5	-10.1	1.3	-25.0	-1.1
Average annual % change over 5 years^d						
Apr 2003 to Mar 2008	0.6	-4.0	-3.5	6.4	-1.0	-0.4

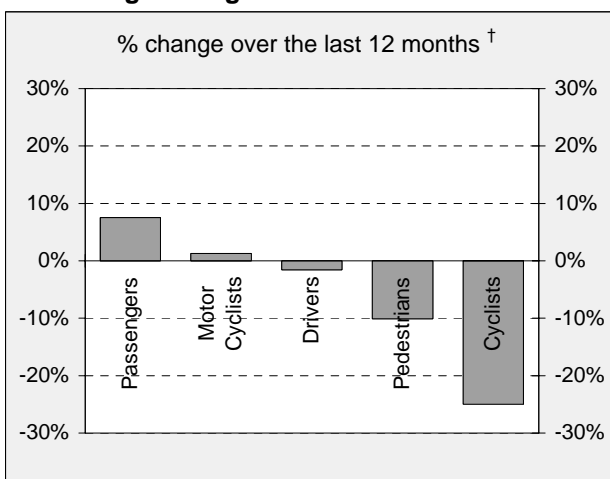
a Includes pillion passengers

b Includes road users not separately specified

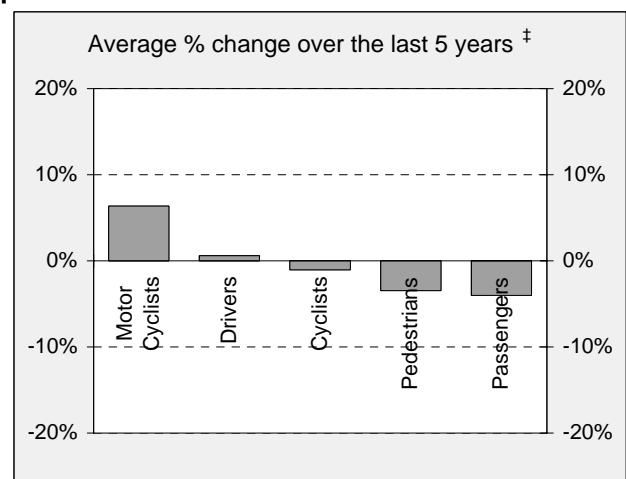
c Includes road users with unstated gender

d Average annual percentage change based on the exponential trend for the last five 12-month period.

Percentage change in deaths in each road user group



† Percentage change between the 12-month periods of Apr 2006 - Mar 2007 and Apr 2007 - Mar 2008

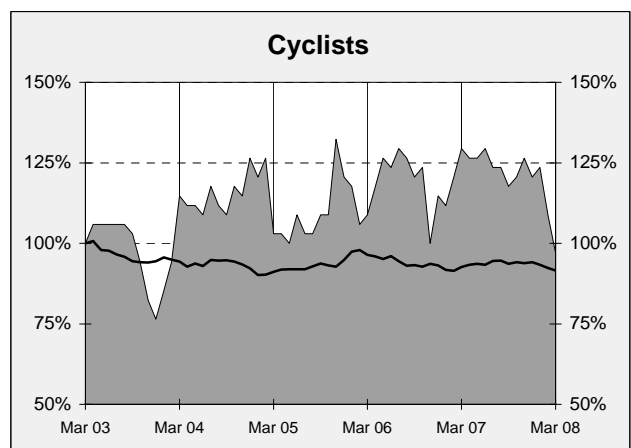
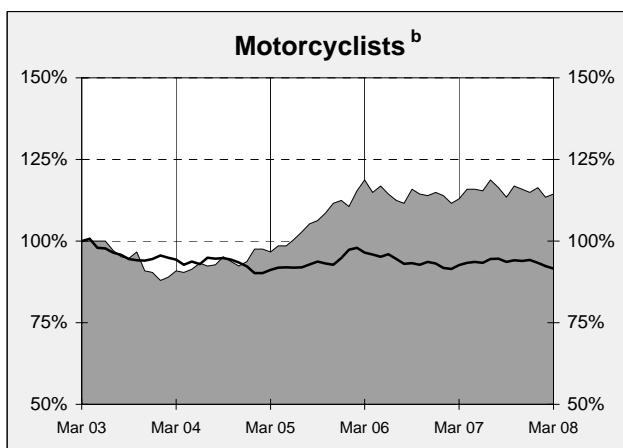
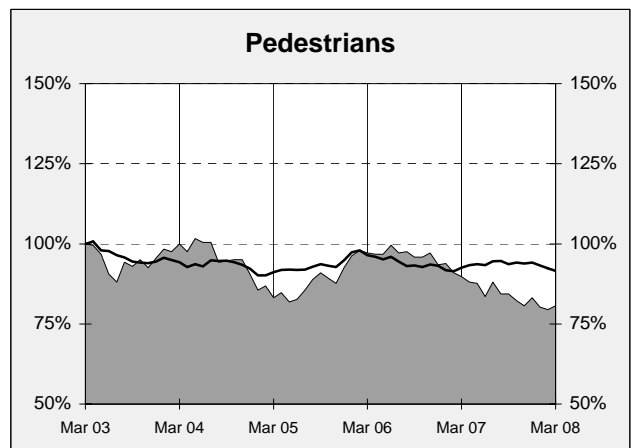
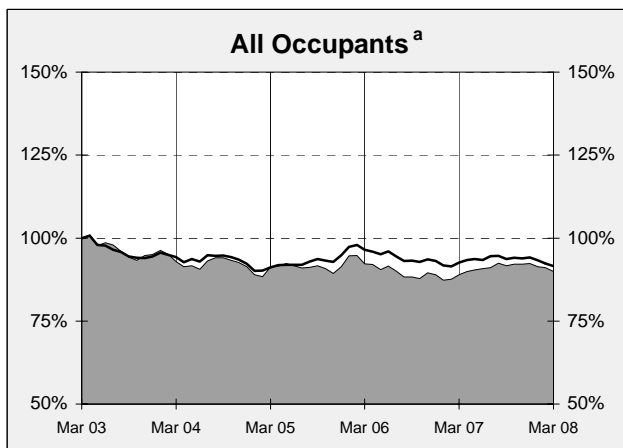
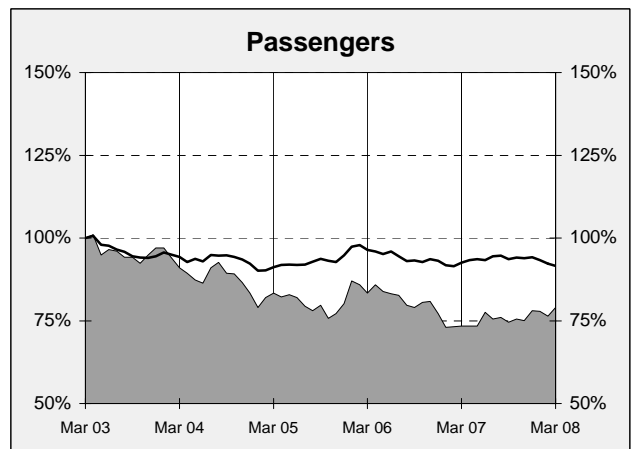
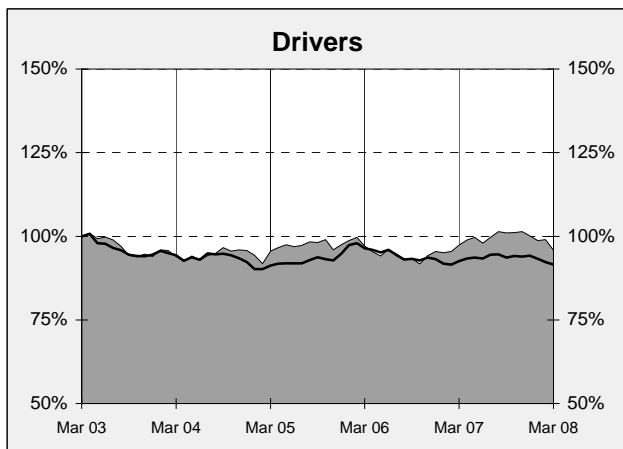
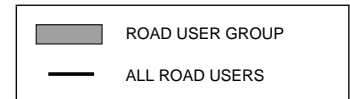


‡ Average annual percentage change based on the exponential trend for the last five 12-month periods

DEATHS IN EACH ROAD USER GROUP - TRENDS

Annual deaths in each road user group - last 5 years

The number shown at each month represents the number of deaths in the preceding 12 months expressed as a percentage of the number of deaths in the 12 months to March 2003.



a Comprises drivers and passengers

b Includes pillion passengers

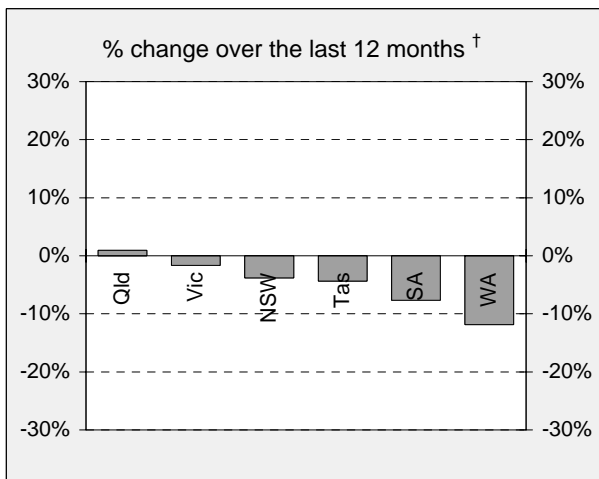
NUMBER OF FATAL ROAD CRASHES IN EACH STATE / TERRITORY

Fatal crashes by State/Territory for month, year to date and twelve month-period ended March 2008 and period ended March 2007

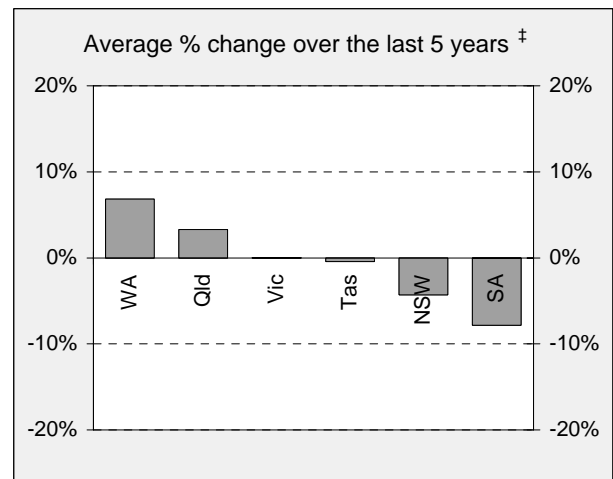
	NSW	Vic	Qld	SA	WA	Tas	NT	ACT	Australia
Current month									
Mar 2008	31	36	23	7	17	7	3	0	124
Mar 2007	41	29	29	10	26	5	2	1	143
% change	-24.4	24.1	-20.7	-30.0	-34.6	40.0	50.0	-100.0	-13.3
Year to date									
Jan 2008 - Mar 2008	86	82	66	18	42	16	10	4	324
Jan 2007 - Mar 2007	102	71	80	29	70	13	9	2	376
% change	-15.7	15.5	-17.5	-37.9	-40.0	23.1	11.1	100.0	-13.8
12 months to date									
Apr 2007 - Mar 2008	402	300	324	96	186	44	47	16	1,415
Apr 2006 - Mar 2007	418	305	321	104	211	46	43	12	1,460
% change	-3.8	-1.6	0.9	-7.7	-11.8	-4.3	9.3	33.3	-3.1
Average annual % change over 5 years^a									
Apr 2003 to Mar 2008	-4.3	0.0	3.3	-7.8	6.8	-0.4	4.4	9.8	-0.3

a Average annual percentage change based on the exponential trend for the last five 12-month periods

Percentage change in fatal crashes in each State



† Percentage change between the 12-month periods of Apr 2006 - Mar 2007 and Apr 2007 - Mar 2008



‡ Average annual percentage change based on the exponential trend for the last five 12-month periods

FATAL CRASHES INVOLVING TRUCKS OR BUSES

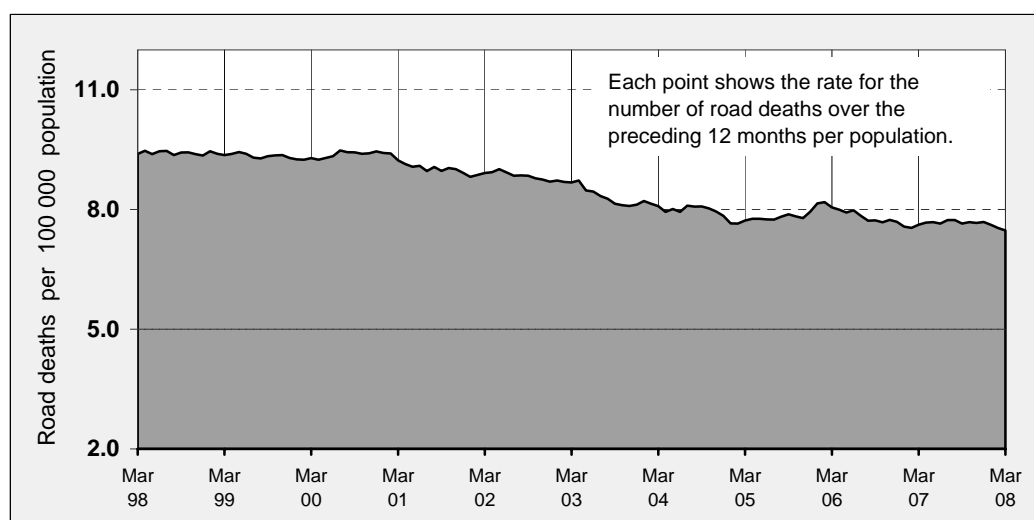
Analysis of fatal crashes involving heavy vehicles is now published in a separate quarterly bulletin

ROAD DEATH RATES

Road deaths per 100 000 population

	NSW	Vic	Qld	SA	WA	Tas	NT	ACT	Australia
12-months to date									
Apr 2007 - Mar 2008	6.2	6.6	8.4	7.2	9.9	9.7	26.0	4.7	7.5
Apr 2006 - Mar 2007	6.6	6.4	8.5	7.3	11.0	11.2	22.2	3.9	7.6
Calendar year									
2007	6.5	6.4	8.6	7.8	11.2	9.5	26.0	4.1	7.7
2002	8.5	8.2	8.7	10.1	9.3	7.8	27.6	3.1	8.7

Australian road deaths per year per 100 000 population - moving 12-monthly data



CHARACTERISTICS OF FATAL CRASHES

Proportion (per cent) of fatal crashes by speed limit, crash type, time of day, and time of week. Two years ended March 2008 and two years ended March 2003

	Speed limit (km/h) ^a			Time of Day	
	Up to 60	65-95	100+	Day	Night ^b
Apr 2006 - Mar 2008	31.5%	22.4%	46.1%	56.7%	43.3%
Apr 2001 - Mar 2003	31.6%	21.7%	46.7%	55.7%	44.3%
	Crash Type			Time of week	
	Pedestrian crash	Other single veh. Crash	Other multiple veh. crash	Week day	Week-end ^c
Apr 2006 - Mar 2008	14.3%	46.7%	38.9%	58.7%	41.3%
Apr 2001 - Mar 2003	17.0%	43.1%	39.8%	59.9%	40.1%

^a Excludes ACT

^b 6:00 pm to 5:59 am

^c 6:00 pm Friday to 5:59 am Monday

ROAD DEATHS BY AGE, GENDER AND ROAD USER GROUP

Road deaths by age and gender

	0-16 years	17-20 years	21-25 years	26-39 years	40-59 years	60+ years	All deaths^a
Males							
Apr 2007 - Mar 2008	50	144	147	312	286	190	1,134
Apr 2006 - Mar 2007	67	175	155	334	274	197	1,205
% change	-25.4	-17.7	-5.2	-6.6	4.4	-3.6	-5.9
Females							
Apr 2007 - Mar 2008	48	36	42	79	104	119	431
Apr 2006 - Mar 2007	36	57	47	59	86	96	382
% change	33.3	-36.8	-10.6	33.9	20.9	24.0	12.8
Persons^b							
Apr 2007 - Mar 2008	103	180	189	391	390	309	1,571
Apr 2006 - Mar 2007	105	232	202	393	360	293	1,589
% change	-1.9	-22.4	-6.4	-0.5	8.3	5.5	-1.1

a Includes road users with unstated age

b Includes road users with unstated gender

Road deaths by age for each main road user group

	0-16 years	17-20 years	21-25 years	26-39 years	40-59 years	60+ years	All deaths^a
Occupants^b							
Apr 2007 - Mar 2008	73	147	137	260	253	229	1,104
Apr 2006 - Mar 2007	70	197	143	255	229	195	1,092
% change	4.3	-25.4	-4.2	2.0	10.5	17.4	1.1
Motorcyclists^c							
Apr 2007 - Mar 2008	7	23	32	86	74	15	238
Apr 2006 - Mar 2007	6	17	44	92	68	8	235
% change	16.7	35.3	-27.3	-6.5	8.8	87.5	1.3
Pedestrians							
Apr 2007 - Mar 2008	16	9	18	40	48	63	196
Apr 2006 - Mar 2007	22	16	13	36	48	82	218
% change	-27.3	-43.8	38.5	11.1	0.0	-23.2	-10.1

a Includes road users with unstated age

b Comprises drivers and passengers

c Includes pillion passengers

TIME SERIES - QUARTERLY SUPPLEMENT

Road deaths by road user group, 1993 to 2007

	<i>Drivers</i>	<i>Passengers</i>	<i>Pedestrians</i>	<i>Motor-cyclists^a</i>	<i>Cyclists</i>	<i>All road users^b</i>
1993	859	513	331	203	45	1,953
1994	809	501	367	190	59	1,928
1995	874	491	398	204	48	2,017
1996	869	499	351	193	57	1,970
1997	776	431	328	177	52	1,767
1998	741	468	318	181	44	1,755
1999	820	428	299	176	40	1,764
2000	852	450	287	191	31	1,817
2001	776	407	290	216	46	1,737
2002	785	422	249	224	34	1,715
2003	747	420	232	188	26	1,621
2004	761	361	220	195	43	1,583
2005	775	347	225	234	41	1,627
2006	759	334	227	239	39	1,598
2007	796	338	202	239	41	1,616

a Includes pillion passengers

b Includes road users not separately specified

Road deaths by State/Territory, 1993 to 2007

	<i>NSW</i>	<i>Vic</i>	<i>Qld</i>	<i>SA</i>	<i>WA</i>	<i>Tas</i>	<i>NT</i>	<i>ACT</i>	<i>Australia</i>
1993	581	435	396	218	209	58	44	12	1,953
1994	646	377	418	159	211	59	41	17	1,928
1995	620	418	456	181	209	57	61	15	2,017
1996	581	417	385	181	247	64	72	23	1,970
1997	576	377	360	148	197	32	60	17	1,767
1998	556	390	279	168	223	48	69	22	1,755
1999	577	383	314	151	218	53	49	19	1,764
2000	603	407	317	166	212	43	51	18	1,817
2001	524	444	324	153	165	61	50	16	1,737
2002	561	397	322	154	179	37	55	10	1,715
2003	539	330	310	157	180	41	53	11	1,621
2004	510	343	311	139	178	58	35	9	1,583
2005	508	346	330	148	163	51	55	26	1,627
2006	496	337	335	117	203	55	42	13	1,598
2007	448	332	360	124	235	47	56	14	1,616

DEATH RATES - QUARTERLY REPORT

Road death rates by State/Territory

	<i>NSW</i>	<i>Vic</i>	<i>Qld</i>	<i>SA</i>	<i>WA</i>	<i>Tas</i>	<i>NT</i>	<i>ACT</i>	<i>Australia</i>
<i>Per capita^a</i>									
2007	6.50	6.38	8.61	7.83	11.16	9.53	26.05	4.12	7.69
2002	8.46	8.16	8.67	10.12	9.30	7.83	27.58	3.10	8.73
<i>Per vehicle^b</i>									
2007	1.03	0.87	1.19	1.07	1.40	1.23	4.74	0.61	1.09
2002	1.46	1.16	1.32	1.45	1.27	1.10	5.30	0.48	1.34

a Annual deaths per 100,000 population: 2007 at June 30 (preliminary data); 2002 at June 30 (revised data) taken from ABS catalogue 3201.0

b Annual deaths per 10,000 registered motor vehicles: 2007 at Mar 31; 2002 at Oct 31 taken from ABS catalogue 9309.0.

DEATHS BY AGE AND ROAD USER GROUP - QUARTERLY SUPPLEMENT

Road deaths by road user group and age for twelve months ended
March 2008 and twelve months ended March 2007

	0-16 years	17-20 years	21-25 years	26-39 years	40-59 years	60+ years	All deaths ^d
Drivers							
<i>Apr 2007 - Mar 2008</i>	6	92	91	203	207	161	762
<i>Apr 2006 - Mar 2007</i>	6	124	106	200	188	148	774
<i>% change</i>	0.0	-25.8	-14.2	1.5	10.1	8.8	-1.6
<i>Ave annual % change^a</i>							
<i>Mar 2003 to Mar 2008</i>	14.9	-5.5	-0.4	-0.3	0.0	-0.4	-0.8
Passengers							
<i>Apr 2007 - Mar 2008</i>	67	55	46	57	46	68	342
<i>Apr 2006 - Mar 2007</i>	64	73	37	55	41	47	318
<i>% change</i>	4.7	-24.7	24.3	3.6	12.2	44.7	7.5
<i>Ave annual % change^a</i>							
<i>Mar 2003 to Mar 2008</i>	-6.5	-8.3	-4.2	-5.3	-5.5	2.2	-4.6
Pedestrians							
<i>Apr 2007 - Mar 2008</i>	16	9	18	40	48	63	196
<i>Apr 2006 - Mar 2007</i>	22	16	13	36	48	82	218
<i>% change</i>	-27.3	-43.8	38.5	11.1	0.0	-23.2	-10.1
<i>Ave annual % change^a</i>							
<i>Mar 2003 to Mar 2008</i>	-10.6	-10.9	1.1	0.5	-6.2	-3.9	-4.2
Motorcyclists^b							
<i>Apr 2007 - Mar 2008</i>	7	23	32	86	74	15	238
<i>Apr 2006 - Mar 2007</i>	6	17	44	92	68	8	235
<i>% change</i>	16.7	35.3	-27.3	-6.5	8.8	87.5	1.3
<i>Ave annual % change^a</i>							
<i>Mar 2003 to Mar 2008</i>	3.1	7.5	2.0	-3.0	6.9	30.3	2.7
Cyclists							
<i>Apr 2007 - Mar 2008</i>	7	1	2	5	15	2	33
<i>Apr 2006 - Mar 2007</i>	7	2	2	10	15	8	44
All road users^c							
<i>Apr 2007 - Mar 2008</i>	103	180	189	391	390	309	1,571
<i>Apr 2006 - Mar 2007</i>	105	232	202	393	360	293	1,589
<i>% change</i>	-1.9	-22.4	-6.4	-0.5	8.3	5.5	-1.1
<i>Ave annual % change^a</i>							
<i>Mar 2003 to Mar 2008</i>	-5.8	-5.7	-0.9	-1.7	-0.4	-0.3	-1.8

^a This represents the average annual exponential change between the annual count of 5-years ago and the current annual count

^b Includes pillion passengers

^c Includes road users not separately classified

^d Includes deaths with unstated age

DEATHS BY STATE / TERRITORY AND ROAD USER - QUARTERLY SUPPLEMENT

Road deaths by road user group and State/Territory for twelve months ended March 2008 and twelve months ended March 2007

	NSW	Vic	Qld	SA	WA	Tas	NT	ACT	Australia
Drivers									
Apr 2007 - Mar 2008	225	160	166	52	104	24	21	10	762
Apr 2006 - Mar 2007	228	170	163	54	107	26	20	6	774
% change	-1.3	-5.9	1.8	-3.7	-2.8	-7.7	5.0	-	-1.6
Ave annual % change ^a									
Mar 2003 to Mar 2008	-3.9	-2.9	3.2	-7.8	5.7	8.4	7.0	-	-0.8
Passengers									
Apr 2007 - Mar 2008	69	75	68	37	58	14	19	2	342
Apr 2006 - Mar 2007	95	60	66	20	53	15	8	1	318
% change	-27.4	25.0	3.0	85.0	9.4	-6.7	137.5	-	7.5
Ave annual % change ^a									
Mar 2003 to Mar 2008	-10.6	-5.4	-2.7	-4.7	4.3	14.9	-8.1	-	-4.6
Pedestrians									
Apr 2007 - Mar 2008	61	52	41	11	14	3	13	1	196
Apr 2006 - Mar 2007	66	49	43	16	25	4	13	2	218
% change	-7.6	6.1	-4.7	-31.3	-44.0	-25.0	0.0	-	-10.1
Ave annual % change ^a									
Mar 2003 to Mar 2008	-7.9	1.2	0.5	-11.3	-12.3	0.0	3.4	-	-4.2
Motorcyclists ^b									
Apr 2007 - Mar 2008	61	53	68	12	31	7	3	3	238
Apr 2006 - Mar 2007	56	39	66	19	39	7	6	3	235
% change	8.9	35.9	3.0	-36.8	-20.5	0.0	-50.0	-	1.3
Ave annual % change ^a									
Mar 2003 to Mar 2008	1.0	3.3	5.9	-7.8	5.3	0.0	-5.6	-	2.7
Cyclists									
Apr 2007 - Mar 2008	15	4	9	2	3	0	0	0	33
Apr 2006 - Mar 2007	8	13	10	6	3	3	0	1	44
All road users ^c									
Apr 2007 - Mar 2008	431	344	352	114	210	48	56	16	1,571
Apr 2006 - Mar 2007	453	331	348	115	227	55	47	13	1,589
% change	-4.9	3.9	1.1	-0.9	-7.5	-12.7	19.1	23.1	-1.1
Ave annual % change ^a									
Mar 2003 to Mar 2008	-5.0	-2.3	2.2	-7.4	2.8	7.8	-1.4	4.2	-1.8

^a This represents the average annual exponential change between the annual count of 5-years ago and the current annual count

^b Includes pillion passengers

^c Includes road users not separately classified