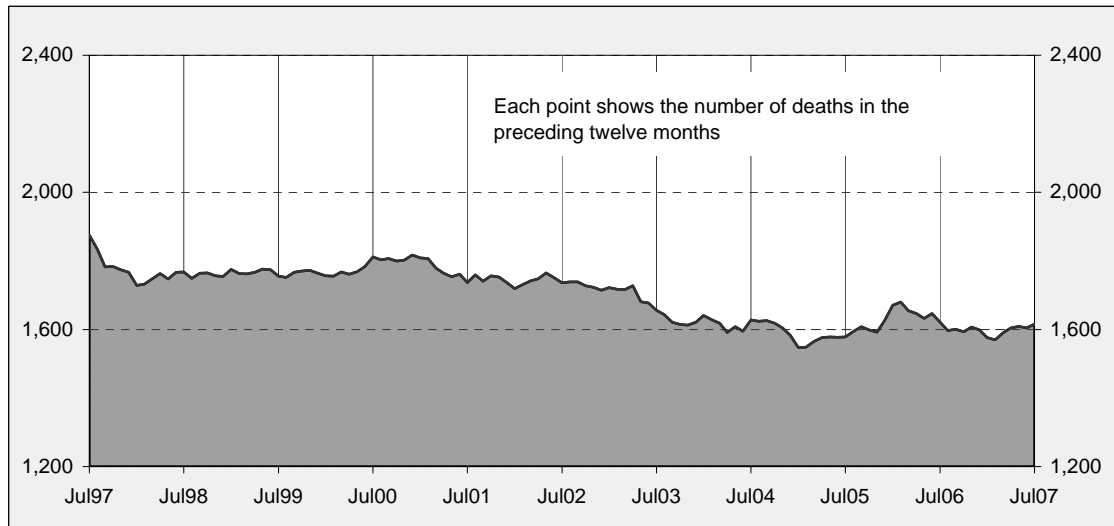




Australian road deaths for 12 months to date - last 10 years



Inquiries

For further information about data in this bulletin, contact:

Road Safety Research and Statistics
Australian Transport Safety Bureau
PO Box 967,
Civic Square, ACT 2608
Email: research@atsb.gov.au
Internet: www.atsb.gov.au

Data Sources

The data presented here are obtained from the following sources:

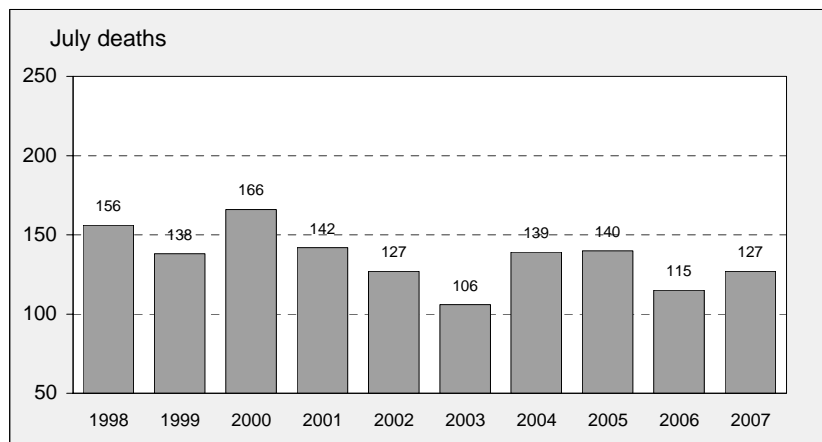
- Roads and Traffic Authority, NSW
- Vicroads
- Queensland Transport
- Department for Transport, Energy and Infrastructure, South Australia
- Western Australia Police
- Department of Infrastructure, Energy and Resources, Tasmania
- Department of Planning and Infrastructure, Northern Territory
- Territory and Municipal Services, ACT

Note

Road death statistics for recent months are preliminary and subject to revision. They include any deaths occurring within 30 days of a crash stemming from injuries received in the crash.

The Australian Transport Safety Bureau is an operationally independent body within the Australian Government Department of Transport and Regional Services.

Australian road deaths for July - last 10 years



This month's key figures

There were a total of 127 road deaths in July 2007.
- this is a 10.4% increase over the July 2006 figure.

There have been 936 road deaths in 2007 to the end of July.
- this is a 1.8% increase over the same 7 month period in 2006.

NUMBER OF ROAD CRASH DEATHS IN EACH STATE / TERRITORY

Road deaths by State/Territory for month, year to date, and twelve months - period ended July 2007 and period ended July 2006

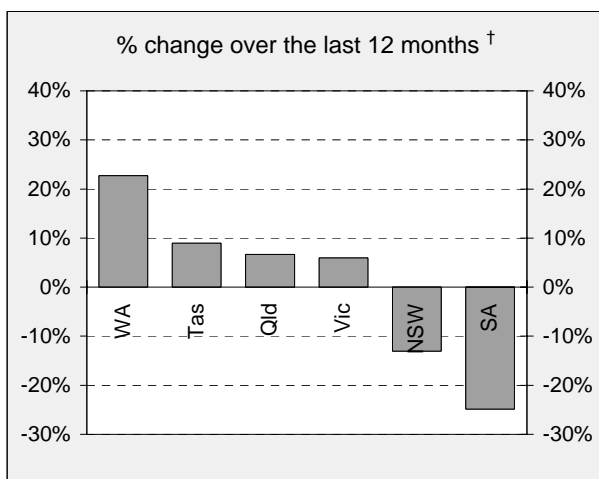
	NSW	Vic	Qld	SA	WA	Tas	NT	ACT	Australia
Current month									
Jul 2007	37	26	28	7	18	4	6	1	127
Jul 2006	35	25	25	8	17	1	4	0	115
% change	5.7	4.0	12.0	-12.5	5.9	300.0	50.0	-	10.4
Year to date									
Jan 2007 - Jul 2007	269	182	214	65	135	37	25	9	936
Jan 2006 - Jul 2006	314	182	181	79	111	30	18	4	919
% change	-14.3	0.0	18.2	-17.7	21.6	23.3	38.9	125.0	1.8
12-months to date									
Aug 2006 - Jul 2007	453	337	368	103	227	61	49	18	1,616
Aug 2005 - Jul 2006	521	318	345	137	185	56	46	13	1,621
Difference	-68	19	23	-34	42	5	3	5	-5
% change	-13.1	6.0	6.7	-24.8	22.7	8.9	6.5	38.5	-0.3

Average annual % change over 5 years^a

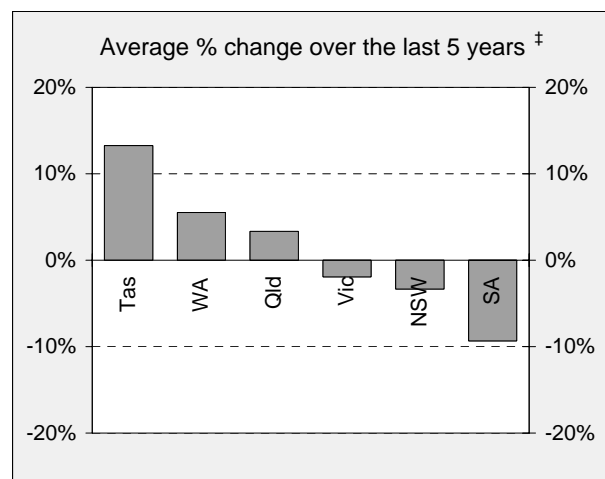
Aug 2002 to Jul 2007	-3.3	-1.9	3.3	-9.3	5.5	13.3	-3.3	11.3	-0.5
----------------------	------	------	-----	------	-----	------	------	------	------

^a Average annual percentage change based on the exponential trend for the last five 12 -month periods

Percentage change in deaths in each State



[†] Percentage change between the 12-month periods of Aug 2005 - Jul 2006 and Aug 2006 - Jul 2007



[‡] Average annual percentage change based on the exponential trend for the last five 12-month periods

NUMBER OF DEATHS IN EACH ROAD USER GROUP

Road deaths by road user group and gender for twelve months ended July 2007 and twelve months ended July 2006

	Drivers	Passengers	Pedestrians	Motor-cyclists ^a	Cyclists	All road users ^b
Males						
Aug 2006 - Jul 2007	609	178	131	231	39	1,188
Aug 2005 - Jul 2006	572	196	151	224	36	1,180
% change	6.5	-9.2	-13.2	3.1	8.3	0.7
Females						
Aug 2006 - Jul 2007	179	145	78	15	4	421
Aug 2005 - Jul 2006	176	160	85	9	8	438
% change	1.7	-9.4	-8.2	66.7	-50.0	-3.9
Persons^c						
Aug 2006 - Jul 2007	791	324	209	246	43	1,616
Aug 2005 - Jul 2006	748	359	236	233	44	1,621
% change	5.7	-9.7	-11.4	5.6	-2.3	-0.3
Average annual % change over 5 years^d						
Aug 2002 to Jul 2007	0.1	-5.8	-0.8	6.1	4.6	-0.5

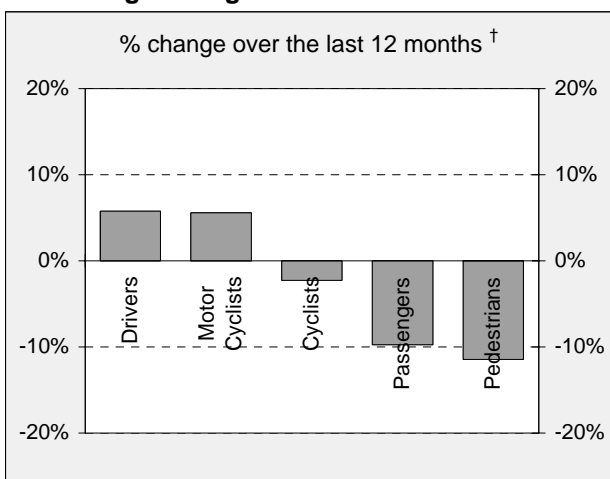
a Includes pillion passengers

b Includes road users not separately specified

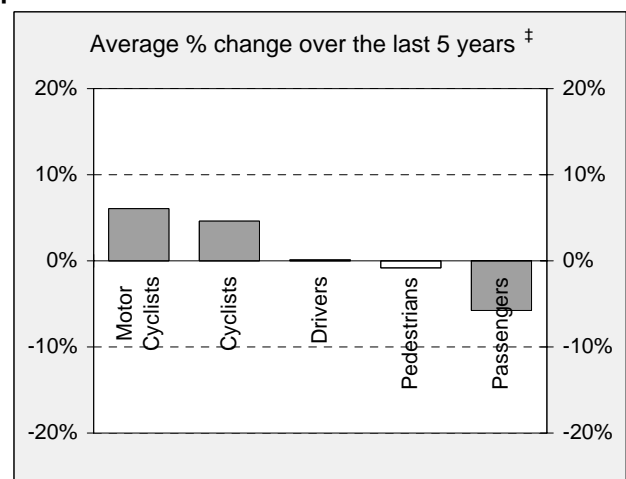
c Includes road users with unstated gender

d Average annual percentage change based on the exponential trend for the last five 12-month period.

Percentage change in deaths in each road user group



† Percentage change between the 12-month periods of Aug 2005 - Jul 2006 and Aug 2006 - Jul 2007

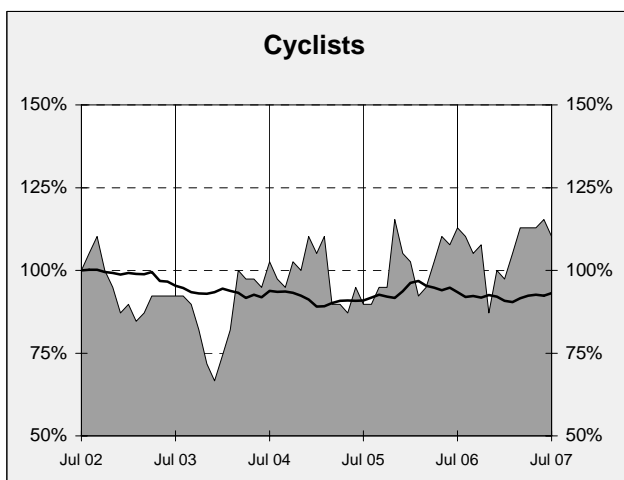
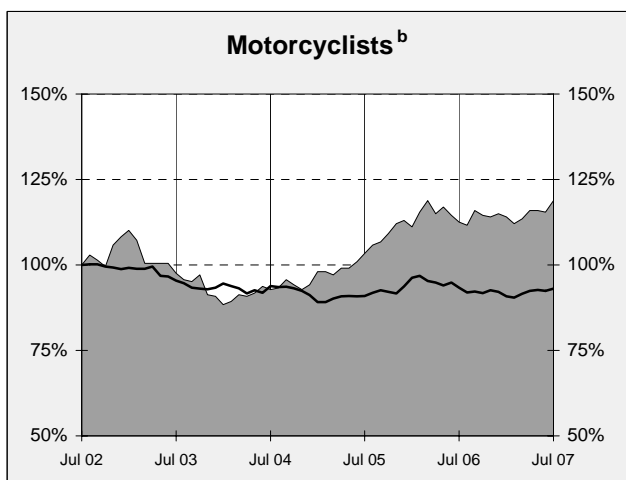
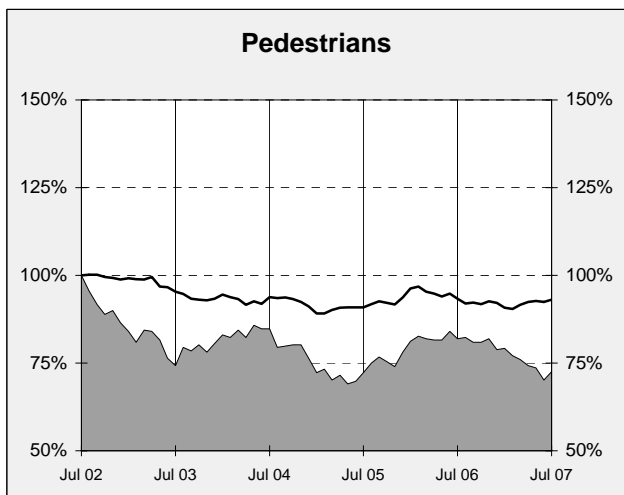
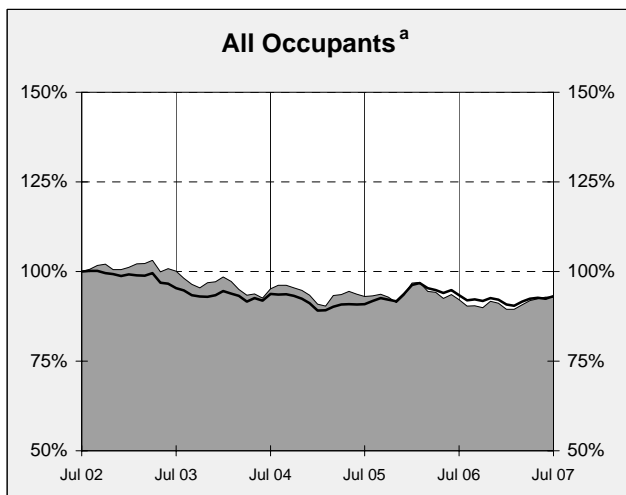
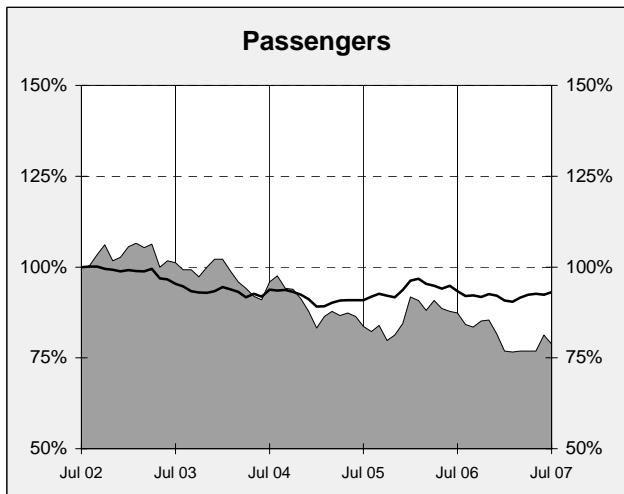
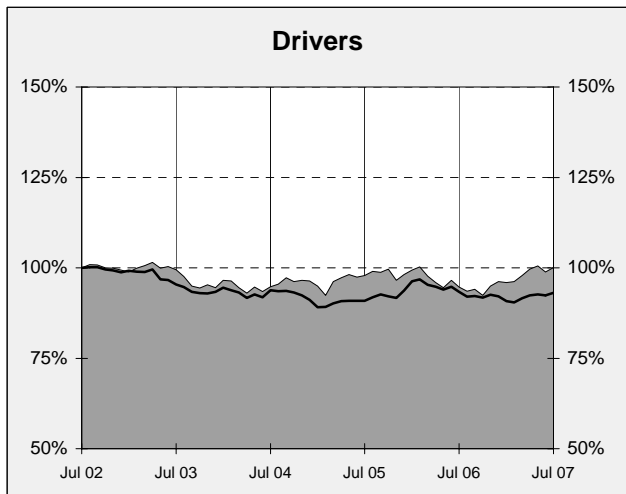
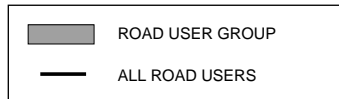


‡ Average annual percentage change based on the exponential trend for the last five 12-month periods

DEATHS IN EACH ROAD USER GROUP - TRENDS

Annual deaths in each road user group - last 6 years

The number shown at each month represents the number of deaths in the preceding 12 months expressed as a percentage of the number of deaths in the 12 months to July 2002.



a Comprises drivers and passengers

b Includes pillion passengers

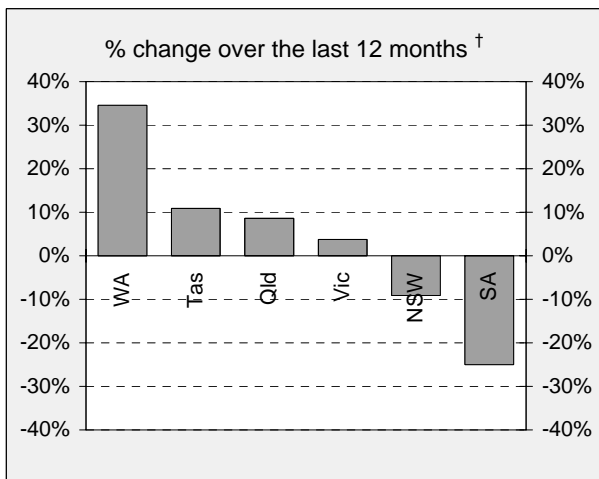
NUMBER OF FATAL ROAD CRASHES IN EACH STATE / TERRITORY

Fatal crashes by State/Territory for month, year to date and twelve month-period ended July 2007 and period ended July 2006

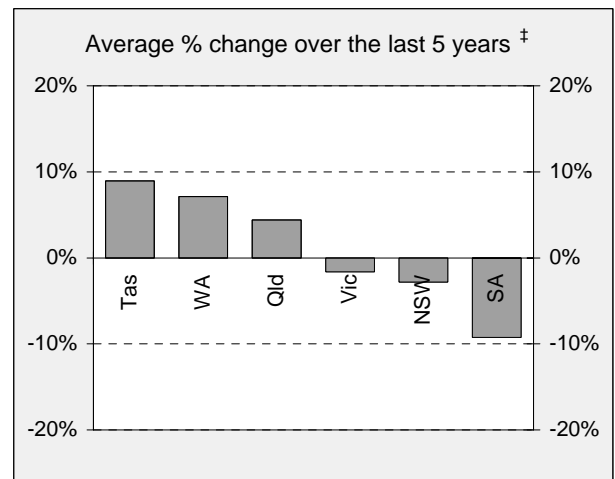
	NSW	Vic	Qld	SA	WA	Tas	NT	ACT	Australia
Current month									
Jul 2007	35	23	28	7	17	4	5	1	120
Jul 2006	33	23	23	7	12	1	4	0	103
% change	6.1	0.0	21.7	0.0	41.7	300.0	25.0	-	16.5
Year to date									
Jan 2007 - Jul 2007	249	159	198	57	128	31	23	9	854
Jan 2006 - Jul 2006	280	165	169	71	94	22	18	4	823
% change	-11.1	-3.6	17.2	-19.7	36.2	40.9	27.8	125.0	3.8
12 months to date									
Aug 2006 - Jul 2007	420	303	342	90	218	51	44	17	1,485
Aug 2005 - Jul 2006	462	292	315	120	162	46	45	13	1,455
% change	-9.1	3.8	8.6	-25.0	34.6	10.9	-2.2	30.8	2.1
Average annual % change over 5 years^a									
Aug 2002 to Jul 2007	-2.8	-1.6	4.4	-9.3	7.1	8.9	1.2	16.6	0.2

^a Average annual percentage change based on the exponential trend for the last five 12-month periods

Percentage change in fatal crashes in each State



† Percentage change between the 12-month periods of Aug 2005 - Jul 2006 and Aug 2006 - Jul 2007



‡ Average annual percentage change based on the exponential trend for the last five 12-month periods

FATAL CRASHES INVOLVING TRUCKS OR BUSES

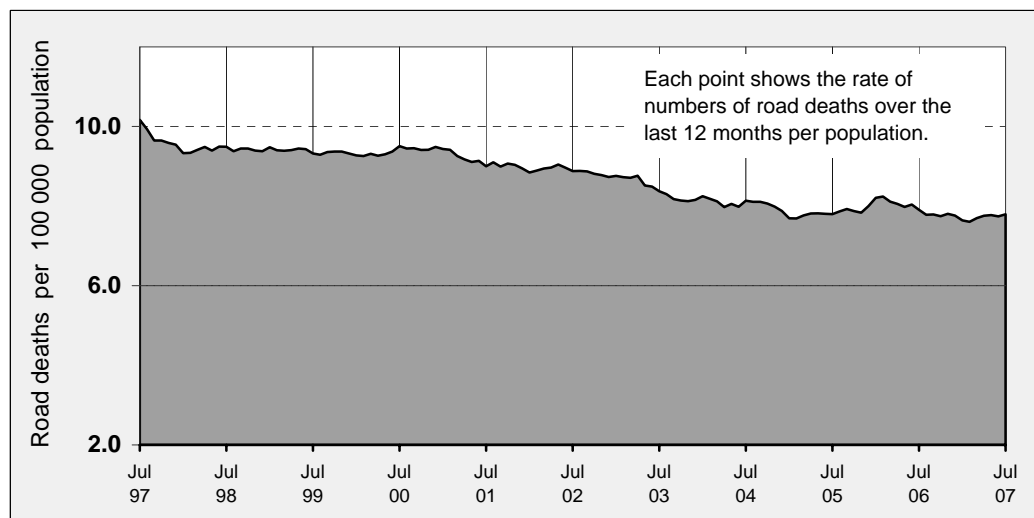
Analysis of fatal crashes involving heavy vehicles is now published in a separate quarterly bulletin on the ATSB website at www.atsb.gov.au.

ROAD DEATH RATES

Road deaths per 100 000 population

	NSW	Vic	Qld	SA	WA	Tas	NT	ACT	Australia
12-months to date									
Aug 2006 - Jul 2007	6.6	6.6	9.0	6.6	11.0	12.5	23.5	5.5	7.8
Aug 2005 - Jul 2006	7.7	6.3	8.6	8.8	9.1	11.5	22.4	4.0	7.9
Calendar year									
2006	7.3	6.6	8.3	7.5	9.9	11.0	20.3	4.0	7.8
2001	8.0	9.2	8.9	10.1	8.7	12.9	25.3	5.0	8.9

Australian road deaths per year per 100 000 population - moving 12-monthly data



CHARACTERISTICS OF FATAL CRASHES

Proportion (per cent) of fatal crashes by speed limit, crash type, time of day, and time of week. Two years ended July 2007 and two years ended July 2002

	Speed limit (km/h) ^a			Time of Day	
	Up to 60	65-95	100+	Day	Night ^b
Aug 2005 - Jul 2007	33.1%	21.4%	45.5%	55.8%	44.2%
Aug 2000 - Jul 2002	33.1%	20.8%	46.1%	56.4%	43.6%
	Crash Type			Time of week	
	Pedestrian crash	Other single veh. Crash	Other multiple veh. crash	Week day	Week-end ^c
Aug 2005 - Jul 2007	14.9%	46.2%	38.9%	58.1%	41.9%
Aug 2000 - Jul 2002	17.7%	42.5%	39.8%	60.6%	39.4%

^a Excludes ACT

^b 6:00 pm to 5:59 am

^c 6:00 pm Friday to 5:59 am Monday

ROAD DEATHS BY AGE, GENDER AND ROAD USER GROUP

Road deaths by age and gender

	0-16 years	17-20 years	21-25 years	26-39 years	40-59 years	60+ years	All deaths^a
Males							
Aug 2006 - Jul 2007	67	152	147	335	280	192	1,188
Aug 2005 - Jul 2006	75	171	182	330	249	170	1,180
% change	-10.7	-11.1	-19.2	1.5	12.4	12.9	0.7
Females							
Aug 2006 - Jul 2007	48	49	43	72	95	108	421
Aug 2005 - Jul 2006	55	49	47	79	100	107	438
% change	-12.7	0.0	-8.5	-8.9	-5.0	0.9	-3.9
Persons^b							
Aug 2006 - Jul 2007	120	201	190	407	375	300	1,616
Aug 2005 - Jul 2006	133	220	229	409	349	277	1,621
% change	-9.8	-8.6	-17.0	-0.5	7.4	8.3	-0.3

a Includes road users with unstated age

b Includes road users with unstated gender

Road deaths by age for each main road user group

	0-16 years	17-20 years	21-25 years	26-39 years	40-59 years	60+ years	All deaths^a
Occupants^b							
Aug 2006 - Jul 2007	78	167	133	271	236	215	1,115
Aug 2005 - Jul 2006	88	178	160	268	234	177	1,107
% change	-11.4	-6.2	-16.9	1.1	0.9	21.5	0.7
Motorcyclists^c							
Aug 2006 - Jul 2007	10	15	41	89	72	14	246
Aug 2005 - Jul 2006	2	26	51	86	58	10	233
% change	400.0	-42.3	-19.6	3.5	24.1	40.0	5.6
Pedestrians							
Aug 2006 - Jul 2007	22	17	13	37	50	67	209
Aug 2005 - Jul 2006	35	13	18	46	43	79	236
% change	-37.1	30.8	-27.8	-19.6	16.3	-15.2	-11.4

a Includes road users with unstated age

b Comprises drivers and passengers

c Includes pillion passengers