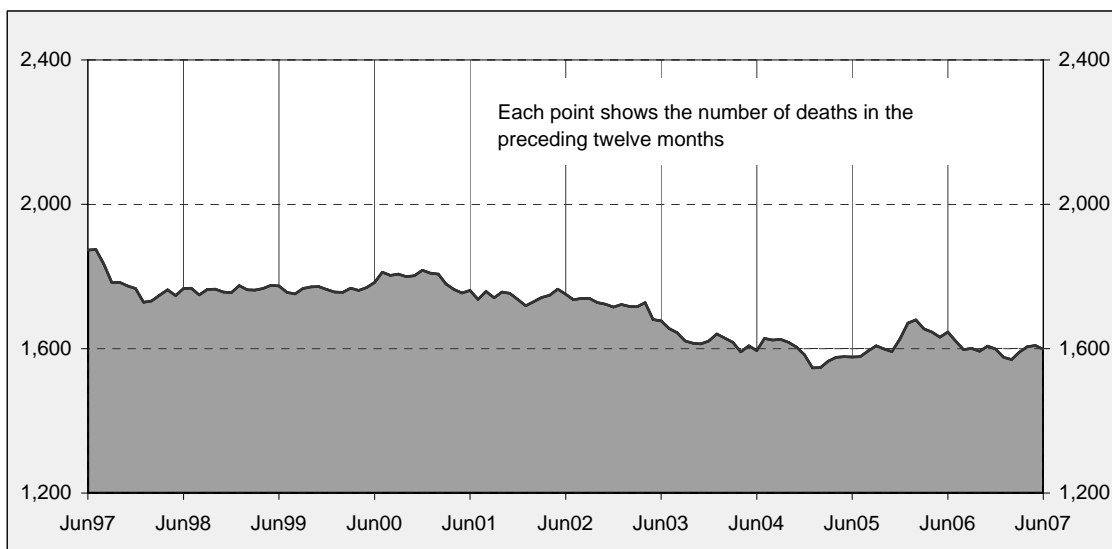




Australian road deaths for 12 months to date - last 10 years



Inquiries

For further information about data in this bulletin, contact:

Road Safety Research and Statistics
Australian Transport Safety Bureau
PO Box 967,
Civic Square, ACT 2608
Email: research@atsb.gov.au
Internet: www.atsb.gov.au

Data Sources

The data presented here are obtained from the following sources:

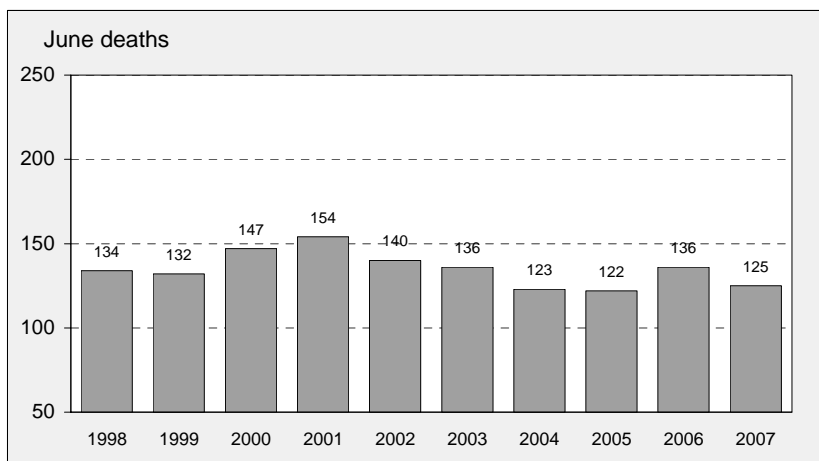
- Roads and Traffic Authority, NSW
- Vicroads
- Queensland Transport
- Department for Transport, Energy and Infrastructure, South Australia
- Western Australia Police
- Department of Infrastructure, Energy and Resources, Tasmania
- Department of Planning and Infrastructure, Northern Territory
- Territory and Municipal Services, ACT

Note

Road death statistics for recent months are preliminary and subject to revision. They include any deaths occurring within 30 days of a crash stemming from injuries received in the crash.

The Australian Transport Safety Bureau is an operationally independent body within the Australian Government Department of Transport and Regional Services.

Australian road deaths for June - last 10 years



This month's key figures

There were a total of 125 road deaths in June 2007.
- this is a 8.1% decrease from the June 2006 figure.

There have been 803 road deaths in 2007 to the end of June.
- this is a 0.1% decrease from the same 6 month period in 2006.

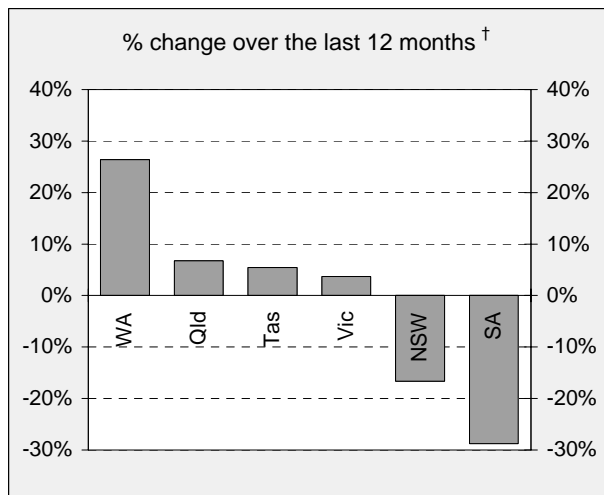
NUMBER OF ROAD CRASH DEATHS IN EACH STATE / TERRITORY

Road deaths by State/Territory for month, year to date, and twelve months - period ended June 2007 and period ended June 2006

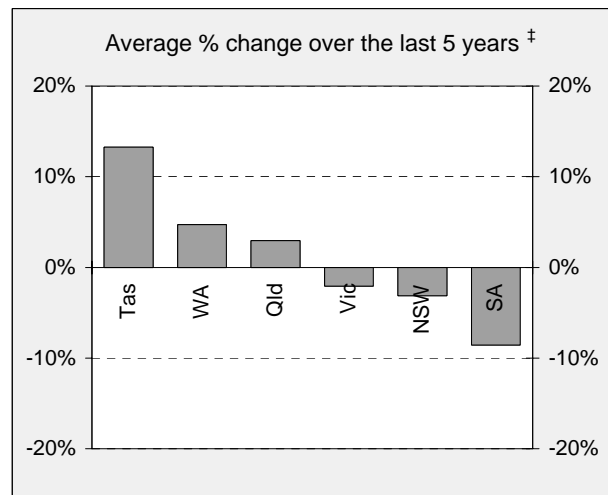
	NSW	Vic	Qld	SA	WA	Tas	NT	ACT	Australia
Current month									
Jun 2007	39	27	33	5	10	4	5	2	125
Jun 2006	43	23	27	16	17	6	3	1	136
% change	-9.3	17.4	22.2	-68.8	-41.2	-33.3	66.7	100.0	-8.1
Year to date									
Jan 2007 - Jun 2007	228	155	186	58	116	33	19	8	803
Jan 2006 - Jun 2006	279	157	156	71	94	29	14	4	804
% change	-18.3	-1.3	19.2	-18.3	23.4	13.8	35.7	100.0	-0.1
12-months to date									
Jul 2006 - Jun 2007	447	335	365	104	225	58	47	17	1,598
Jul 2005 - Jun 2006	536	323	342	146	178	55	47	19	1,646
Difference	-89	12	23	-42	47	3	0	-2	-48
% change	-16.6	3.7	6.7	-28.8	26.4	5.5	0.0	-10.5	-2.9
Average annual % change over 5 years^a									
Jul 2002 to Jun 2007	-3.1	-2.1	2.9	-8.6	4.7	13.2	-4.7	13.7	-0.6

^a Average annual percentage change based on the exponential trend for the last five 12-month periods

Percentage change in deaths in each State



† Percentage change between the 12-month periods of Jul 2005 - Jun 2006 and Jul 2006 - Jun 2007



‡ Average annual percentage change based on the exponential trend for the last five 12-month periods

NUMBER OF DEATHS IN EACH ROAD USER GROUP

Road deaths by road user group and gender for twelve months ended June 2007 and twelve months ended June 2006

	Drivers	Passengers	Pedestrians	Motor-cyclists ^a	Cyclists	All road users ^b
Males						
Jul 2006 - Jun 2007	605	185	130	225	41	1,186
Jul 2005 - Jun 2006	580	198	151	227	34	1,191
% change	4.3	-6.6	-13.9	-0.9	20.6	-0.4
Females						
Jul 2006 - Jun 2007	172	145	70	14	4	405
Jul 2005 - Jun 2006	183	161	91	10	8	453
% change	-6.0	-9.9	-23.1	40.0	-50.0	-10.6
Persons^c						
Jul 2006 - Jun 2007	779	331	201	239	45	1,598
Jul 2005 - Jun 2006	763	361	242	237	42	1,646
% change	2.1	-8.3	-16.9	0.8	7.1	-2.9
Average annual % change over 5 years^d						
Jul 2002 to Jun 2007	0.0	-4.9	-1.9	4.9	5.9	-0.6

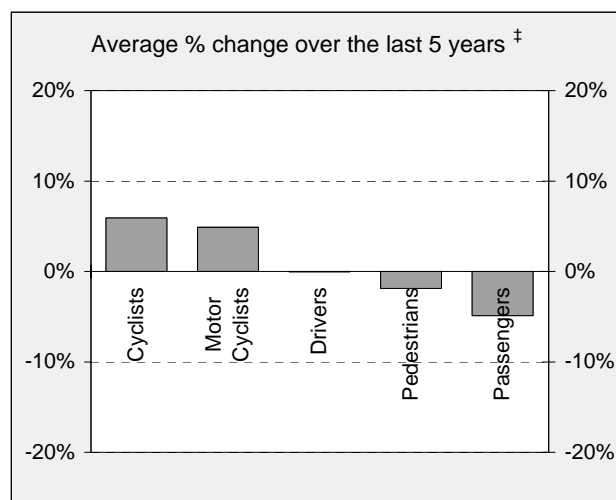
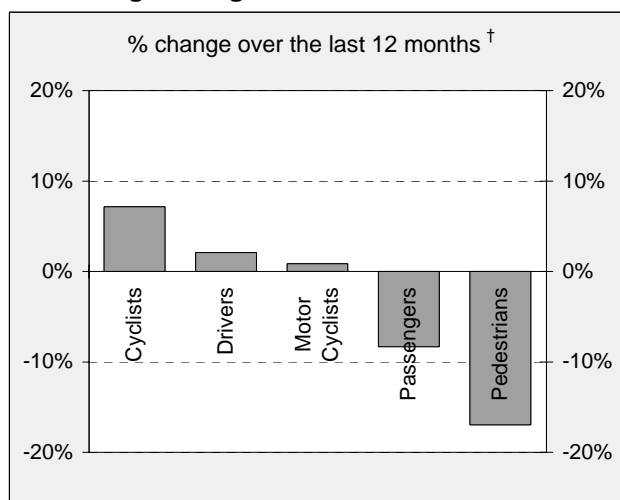
a Includes pillion passengers

b Includes road users not separately specified

c Includes road users with unstated gender

d Average annual percentage change based on the exponential trend for the last five 12-month period.

Percentage change in deaths in each road user group



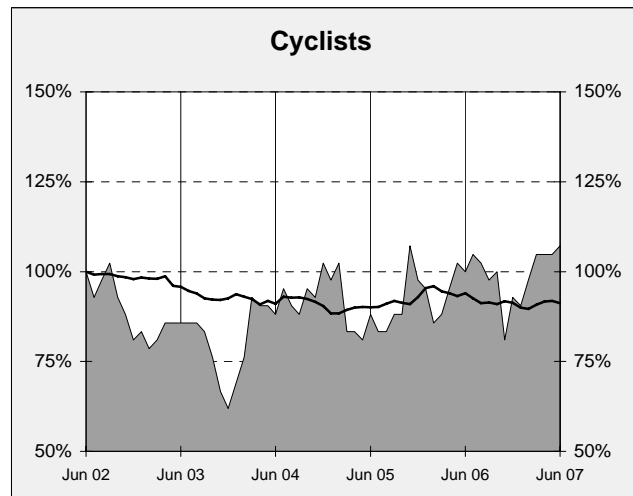
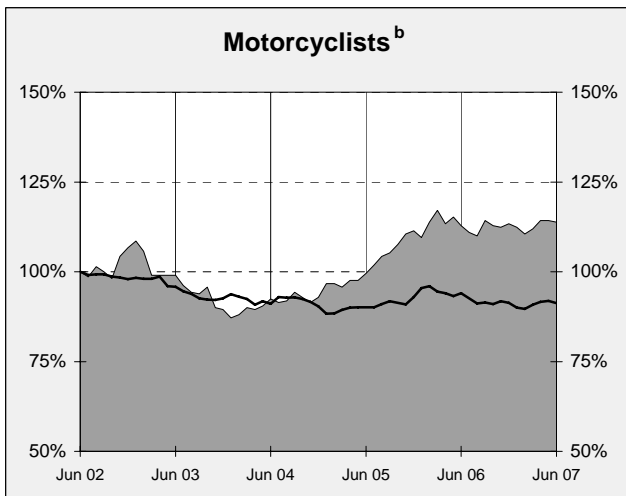
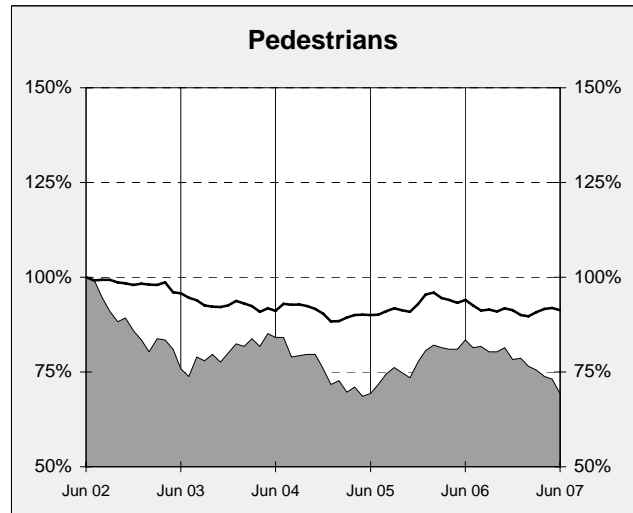
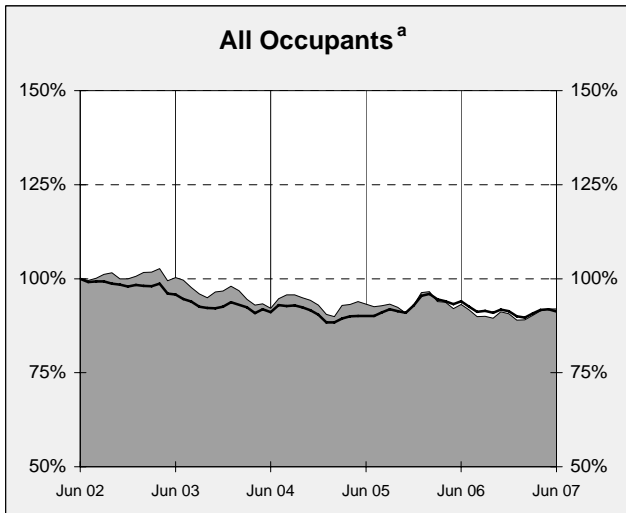
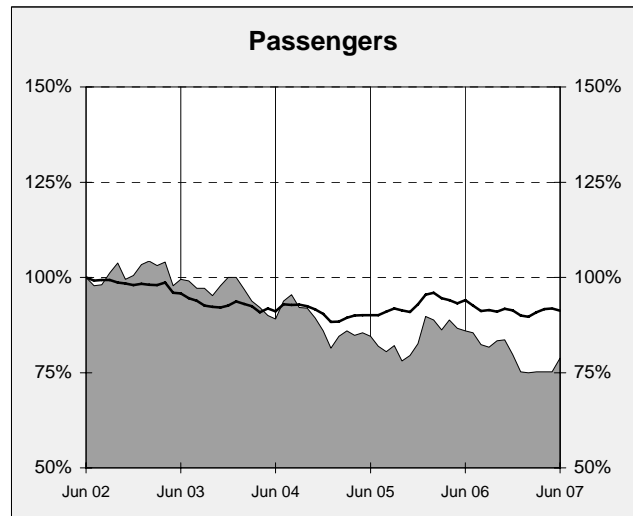
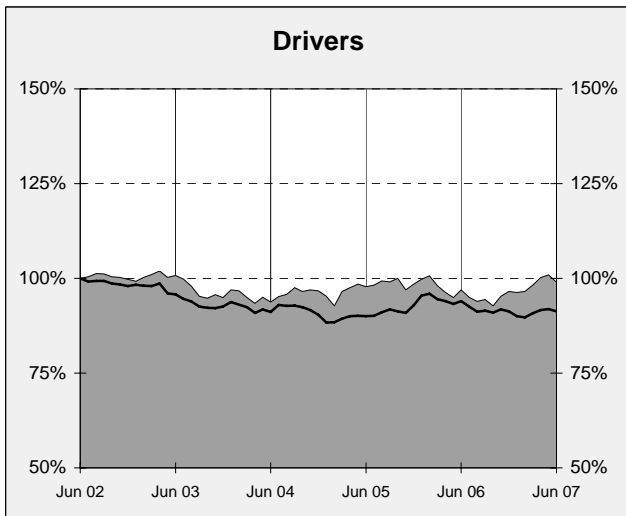
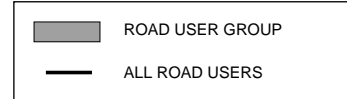
† Percentage change between the 12-month periods of Jul 2005 - Jun 2006 and Jul 2006 - Jun 2007

‡ Average annual percentage change based on the exponential trend for the last five 12-month periods

DEATHS IN EACH ROAD USER GROUP - TRENDS

Annual deaths in each road user group - last 6 years

The number shown at each month represents the number of deaths in the preceding 12 months expressed as a percentage of the number of deaths in the 12 months to June 2002.



a Comprises drivers and passengers

b Includes pillion passengers

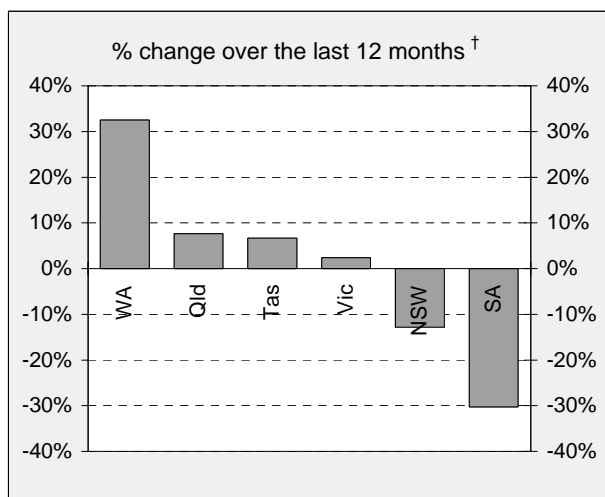
NUMBER OF FATAL ROAD CRASHES IN EACH STATE / TERRITORY

Fatal crashes by State/Territory for month, year to date and twelve month-period ended June 2007 and period ended June 2006

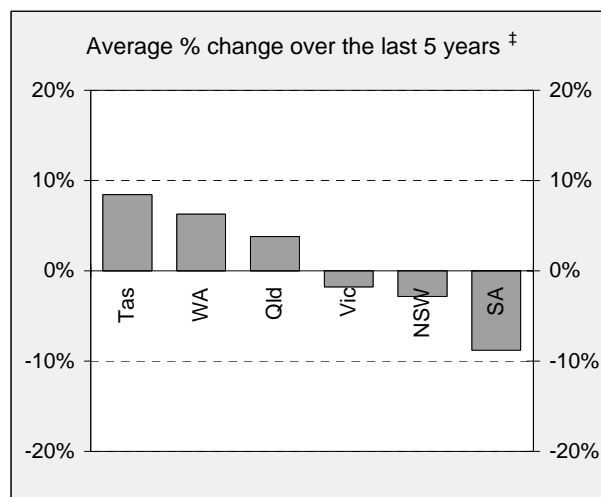
	NSW	Vic	Qld	SA	WA	Tas	NT	ACT	Australia
Current month									
Jun 2007	34	17	28	5	10	3	5	2	104
Jun 2006	39	22	26	13	15	6	3	1	125
% change	-12.8	-22.7	7.7	-61.5	-33.3	-50.0	66.7	100.0	-16.8
Year to date									
Jan 2007 - Jun 2007	210	135	170	50	110	27	18	8	728
Jan 2006 - Jun 2006	247	142	146	64	82	21	14	4	720
% change	-15.0	-4.9	16.4	-21.9	34.1	28.6	28.6	100.0	1.1
12 months to date									
Jul 2006 - Jun 2007	414	302	337	90	212	48	43	16	1,462
Jul 2005 - Jun 2006	475	295	313	129	160	45	46	18	1,481
% change	-12.8	2.4	7.7	-30.2	32.5	6.7	-6.5	-11.1	-1.3
Average annual % change over 5 years^a									
Jul 2002 to Jun 2007	-2.9	-1.8	3.8	-8.8	6.3	8.4	0.7	17.7	0.0

^a Average annual percentage change based on the exponential trend for the last five 12-month periods

Percentage change in fatal crashes in each State



† Percentage change between the 12-month periods of Jul 2005 - Jun 2006 and Jul 2006 - Jun 2007



‡ Average annual percentage change based on the exponential trend for the last five 12-month periods

FATAL CRASHES INVOLVING TRUCKS OR BUSES

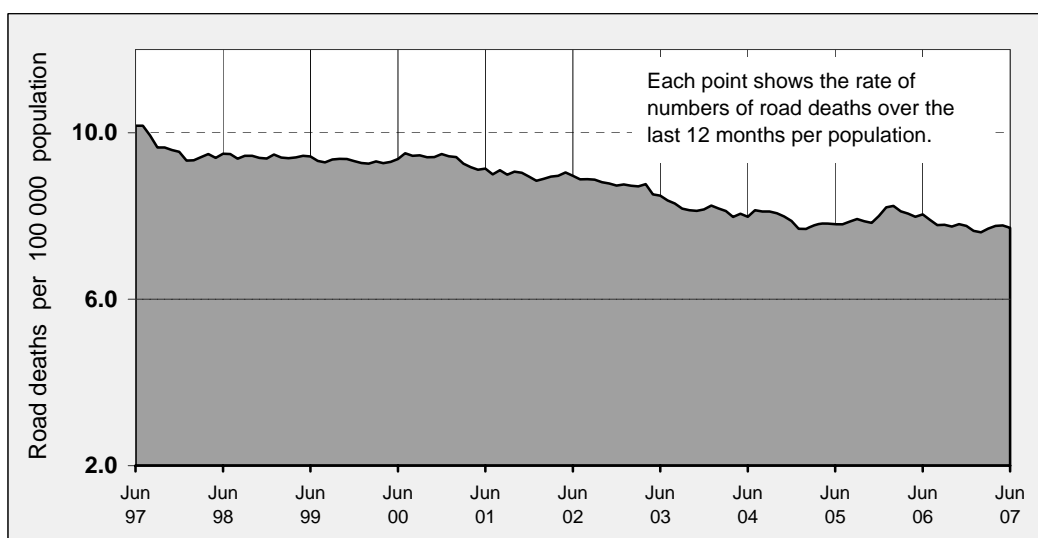
Analysis of fatal crashes involving heavy vehicles is now published in a separate quarterly bulletin on the ATSB website at www.atsb.gov.au.

ROAD DEATH RATES

Road deaths per 100 000 population

	NSW	Vic	Qld	SA	WA	Tas	NT	ACT	Australia
12-months to date									
Jul 2006 - Jun 2007	6.5	6.6	8.9	6.7	10.9	11.8	22.6	5.2	7.7
Jul 2005 - Jun 2006	7.9	6.4	8.5	9.4	8.8	11.3	22.9	5.8	8.0
Calendar year									
2006	7.3	6.6	8.3	7.5	9.9	11.0	20.3	4.0	7.8
2001	8.0	9.2	8.9	10.1	8.7	12.9	25.3	5.0	8.9

Australian road deaths per year per 100 000 population - moving 12-monthly data



CHARACTERISTICS OF FATAL CRASHES

Proportion (per cent) of fatal crashes by speed limit, crash type, time of day, and time of week.
Two years ended June 2007 and two years ended June 2002

	Speed limit (km/h) ^a			Time of Day	
	Up to 60	65-95	100+	Day	Night ^b
Jul 2005 - Jun 2007	32.6%	21.3%	46.0%	55.4%	44.6%
Jul 2000 - Jun 2002	33.1%	20.7%	46.2%	55.9%	44.1%
	Crash Type			Time of week	
	Pedestrian crash	Other single veh. Crash	Other multiple veh. crash	Week day	Week- end ^c
Jul 2005 - Jun 2007	14.8%	46.7%	38.5%	57.5%	42.5%
Jul 2000 - Jun 2002	17.8%	42.4%	39.8%	60.0%	40.0%

a Excludes ACT

b 6:00 pm to 5:59 am

c 6:00 pm Friday to 5:59 am Monday

ROAD DEATHS BY AGE, GENDER AND ROAD USER GROUP

Road deaths by age and gender

	0-16 years	17-20 years	21-25 years	26-39 years	40-59 years	60+ years	All deaths ^a
Males							
Jul 2006 - Jun 2007	62	158	143	332	285	189	1,186
Jul 2005 - Jun 2006	78	166	190	333	241	181	1,191
% change	-20.5	-4.8	-24.7	-0.3	18.3	4.4	-0.4
Females							
Jul 2006 - Jun 2007	46	48	45	68	90	102	405
Jul 2005 - Jun 2006	51	47	53	84	98	119	453
% change	-9.8	2.1	-15.1	-19.0	-8.2	-14.3	-10.6
Persons^b							
Jul 2006 - Jun 2007	113	206	188	400	375	291	1,598
Jul 2005 - Jun 2006	131	213	243	417	339	300	1,646
% change	-13.7	-3.3	-22.6	-4.1	10.6	-3.0	-2.9

a Includes road users with unstated age

b Includes road users with unstated gender

Road deaths by age for each main road user group

	0-16 years	17-20 years	21-25 years	26-39 years	40-59 years	60+ years	All deaths ^a
Occupants^b							
Jul 2006 - Jun 2007	74	171	135	268	240	206	1,110
Jul 2005 - Jun 2006	89	173	169	273	229	189	1,124
% change	-16.9	-1.2	-20.1	-1.8	4.8	9.0	-1.2
Motorcyclists^c							
Jul 2006 - Jun 2007	8	16	39	88	72	12	239
Jul 2005 - Jun 2006	3	25	54	87	57	11	237
% change	166.7	-36.0	-27.8	1.1	26.3	9.1	0.8
Pedestrians							
Jul 2006 - Jun 2007	19	17	11	36	45	69	201
Jul 2005 - Jun 2006	33	12	19	48	40	89	242
% change	-42.4	41.7	-42.1	-25.0	12.5	-22.5	-16.9

a Includes road users with unstated age

b Comprises drivers and passengers

c Includes pillion passengers

TIME SERIES - QUARTERLY SUPPLEMENT

Road deaths by road user group, 1992 to 2006

	<i>Drivers</i>	<i>Passengers</i>	<i>Pedestrians</i>	<i>Motor-cyclists^a</i>	<i>Cyclists</i>	<i>All road users^b</i>
1992	815	570	350	197	41	1,974
1993	859	513	331	203	45	1,953
1994	809	501	367	190	59	1,928
1995	874	491	398	204	48	2,017
1996	869	499	351	193	57	1,970
1997	776	431	328	177	52	1,767
1998	741	468	318	181	44	1,755
1999	820	428	299	176	40	1,764
2000	852	450	287	191	31	1,817
2001	776	407	290	216	46	1,737
2002	785	422	249	224	34	1,715
2003	747	420	232	188	26	1,621
2004	761	361	220	195	43	1,583
2005	775	347	225	234	41	1,627
2006	760	335	227	238	39	1,599

a Includes pillion passengers

b Includes road users not separately specified

Road deaths by State/Territory, 1992 to 2006

	<i>NSW</i>	<i>Vic</i>	<i>Qld</i>	<i>SA</i>	<i>WA</i>	<i>Tas</i>	<i>NT</i>	<i>ACT</i>	<i>Australia</i>
1992	649	396	416	165	200	74	54	20	1,974
1993	581	435	396	218	209	58	44	12	1,953
1994	646	377	418	159	211	59	41	17	1,928
1995	620	418	456	181	209	57	61	15	2,017
1996	581	417	385	181	247	64	72	23	1,970
1997	576	377	360	148	197	32	60	17	1,767
1998	556	390	279	168	223	48	69	22	1,755
1999	577	383	314	151	218	53	49	19	1,764
2000	603	407	317	166	212	43	51	18	1,817
2001	524	444	324	153	165	61	50	16	1,737
2002	561	397	322	154	179	37	55	10	1,715
2003	539	330	310	157	180	41	53	11	1,621
2004	510	343	311	139	178	58	35	9	1,583
2005	508	346	330	148	163	51	55	26	1,627
2006	498	337	335	117	203	54	42	13	1,599

DEATH RATES - QUARTERLY REPORT

Road death rates by State/Territory

	<i>NSW</i>	<i>Vic</i>	<i>Qld</i>	<i>SA</i>	<i>WA</i>	<i>Tas</i>	<i>NT</i>	<i>ACT</i>	<i>Australia</i>
<i>Per capita^a</i>									
2006	7.29	6.62	8.26	7.53	9.90	11.04	20.32	3.95	7.76
2001	7.97	9.24	8.93	10.12	8.68	12.93	25.28	5.01	8.95
<i>Per vehicle^b</i>									
2006	1.17	0.90	1.16	1.03	1.27	1.44	3.68	0.58	1.11
2001	1.40	1.34	1.38	1.46	1.20	1.84	4.86	0.79	1.39

a Annual deaths per 100,000 population: 2006 at June 30 (preliminary data); 2001 at June 30 (revised data) taken from ABS catalogue 3201.0

b Annual deaths per 10,000 registered motor vehicles: 2006 at Mar 31; 2001 at Oct 31 taken from ABS catalogue 9309.0.

DEATHS BY AGE AND ROAD USER GROUP - QUARTERLY SUPPLEMENT

Road deaths by road user group and age for twelve months ended
June 2007 and twelve months ended June 2006

	0-16 years	17-20 years	21-25 years	26-39 years	40-59 years	60+ years	All deaths ^a
Drivers							
Jul 2006 - Jun 2007	6	107	99	210	195	152	779
Jul 2005 - Jun 2006	7	102	124	221	170	139	763
% change	-14.3	4.9	-20.2	-5.0	14.7	9.4	2.1
Ave annual % change ^a Jun 2002 to Jun 2007	-9.7	-1.6	0.6	-0.6	0.6	-1.0	-0.2
Passengers							
Jul 2006 - Jun 2007	68	64	36	58	45	54	331
Jul 2005 - Jun 2006	82	71	45	52	59	50	361
% change	-17.1	-9.9	-20.0	11.5	-23.7	8.0	-8.3
Ave annual % change ^a Jun 2002 to Jun 2007	-0.6	-5.1	-6.0	-2.6	-5.6	-10.1	-4.7
Pedestrians							
Jul 2006 - Jun 2007	19	17	11	36	45	69	201
Jul 2005 - Jun 2006	33	12	19	48	40	89	242
% change	-42.4	41.7	-42.1	-25.0	12.5	-22.5	-16.9
Ave annual % change ^a Jun 2002 to Jun 2007	-11.0	2.5	-16.4	-8.8	-6.2	-6.2	-7.1
Motorcyclists^b							
Jul 2006 - Jun 2007	8	16	39	88	72	12	239
Jul 2005 - Jun 2006	3	25	54	87	57	11	237
% change	166.7	-36.0	-27.8	1.1	26.3	9.1	0.8
Ave annual % change ^a Jun 2002 to Jun 2007	2.7	-1.2	5.4	-0.9	5.9	3.7	2.6
Cyclists							
Jul 2006 - Jun 2007	9	2	3	8	18	4	45
Jul 2005 - Jun 2006	6	3	1	8	13	11	42
All road users^c							
Jul 2006 - Jun 2007	113	206	188	400	375	291	1,598
Jul 2005 - Jun 2006	131	213	243	417	339	300	1,646
% change	-13.7	-3.3	-22.6	-4.1	10.6	-3.0	-2.9
Ave annual % change ^a Jun 2002 to Jun 2007	-3.4	-2.4	-1.6	-1.9	0.1	-4.5	-1.8

^a This represents the average annual exponential change between the annual count of 5-years ago and the current annual count

^b Includes pillion passengers

^c Includes road users not separately classified

^d Includes deaths with unstated age

DEATHS BY STATE / TERRITORY AND ROAD USER - QUARTERLY SUPPLEMENT

Road deaths by road user group and State/Territory for twelve months ended June 2007 and twelve months ended June 2006

	NSW	Vic	Qld	SA	WA	Tas	NT	ACT	Australia
Drivers									
Jul 2006 - Jun 2007	225	163	180	44	113	25	20	9	779
Jul 2005 - Jun 2006	248	146	158	75	84	27	18	7	763
% change	-9.3	11.6	13.9	-41.3	34.5	-7.4	11.1	-	2.1
Ave annual % change ^a									
Jun 2002 to Jun 2007	-2.1	-4.7	5.0	-9.1	8.5	2.6	10.8	-	-0.2
Passengers									
Jul 2006 - Jun 2007	90	73	67	24	47	18	10	2	331
Jul 2005 - Jun 2006	118	64	72	32	43	18	10	4	361
% change	-23.7	14.1	-6.9	-25.0	9.3	0.0	0.0	-	-8.3
Ave annual % change ^a									
Jun 2002 to Jun 2007	-9.0	-4.3	-5.1	-6.2	1.3	35.1	-7.8	-	-4.7
Pedestrians									
Jul 2006 - Jun 2007	62	42	40	13	24	5	13	2	201
Jul 2005 - Jun 2006	93	58	44	12	21	1	11	2	242
% change	-33.3	-27.6	-9.1	8.3	14.3	400.0	18.2	-	-16.9
Ave annual % change ^a									
Jun 2002 to Jun 2007	-7.8	-12.9	-2.8	-8.3	1.8	-11.1	-1.5	-	-7.1
Motorcyclists^b									
Jul 2006 - Jun 2007	60	44	67	17	36	8	4	3	239
Jul 2005 - Jun 2006	64	46	61	21	26	7	6	6	237
% change	-6.3	-4.3	9.8	-19.0	38.5	14.3	-33.3	-	0.8
Ave annual % change ^a									
Jun 2002 to Jun 2007	-1.0	-7.2	15.2	1.2	10.4	-2.3	5.9	-	2.6
Cyclists									
Jul 2006 - Jun 2007	10	10	11	6	5	2	0	1	45
Jul 2005 - Jun 2006	13	9	7	5	4	2	2	0	42
All road users^c									
Jul 2006 - Jun 2007	447	335	365	104	225	58	47	17	1,598
Jul 2005 - Jun 2006	536	323	342	146	178	55	47	19	1,646
% change	-16.6	3.7	6.7	-28.8	26.4	5.5	0.0	-10.5	-2.9
Ave annual % change ^a									
Jun 2002 to Jun 2007	-4.6	-5.8	2.7	-6.3	5.6	5.7	1.3	5.5	-1.8

^a This represents the average annual exponential change between the annual count of 5-years ago and the current annual count

^b Includes pillion passengers

^c Includes road users not separately classified